

The Rolling Hills Club and Minong Trails Club, Advertisers, and Printer are not responsible for trail conditions or the accuracy of this map.

Road routes, designated as gold dotted lines, are included as a general guide only. Neither Washburn County nor the snowmobile / ATV clubs warrant or guarantee that routes are adopted or signed in a legal manner. It is the rider's responsibility to assure that they are operating in a legal manner. It is recommended that you contact the local unit of government for more information on legal road routes.

TRAIL SIGN GUIDE

- BLAZER** - To make sure that you are on the designated trail, watch for the blazer. Where trail exits and entrances are minimal, they will be kept to a minimum.
- DIRECTIONAL ARROW** - This arrow will advise trail users of a change in trail direction where your speed should be reduced to negotiate a curve or corner.
- CAUTION** - Look for caution signs to warn you of a change in trail condition. Prepare to reduce your speed.
- STOP** - Stop signs are used to halt users on a snowmobile trail at road crossings, highway bridge crossings, public railroad grade crossings or trail intersections.
- BRIDGE, CULVERT & HAZARD MAKER** - Snowmobile bridge and culvert crossings are signed with reflective black and yellow hazard markers. Used in pairs, they mark the opening through which you must pass.
- CORRIDOR SIGNS** - A sign like this one designates major thoroughfares out of metropolitan areas and major north-south and east-west corridors. It has a blue background with a white badge symbol.
- SNOWMOBILE ROUTE SIGNS** - The main use of this sign and route arrow is to inform snowmobilers that it is permissible to use the traveled portion of the road or highway. It also alerts traffic that snowmobilers are using the road for travel. The arrows inform trail users which way to proceed on a road or highway. Where the trail begins again, a blazer will indicate the direction that the trail takes.

MAP LEGEND

- Snowmobile Trail
- Year Round ATV Trail
- Snowmobile Road/Lake Route
- ATV Route
- ATV Winter Only
- Sponsors
- Trail Number
- Intersection
- Parking
- Gas
- Shelter

1 Inch = 1.5 Miles

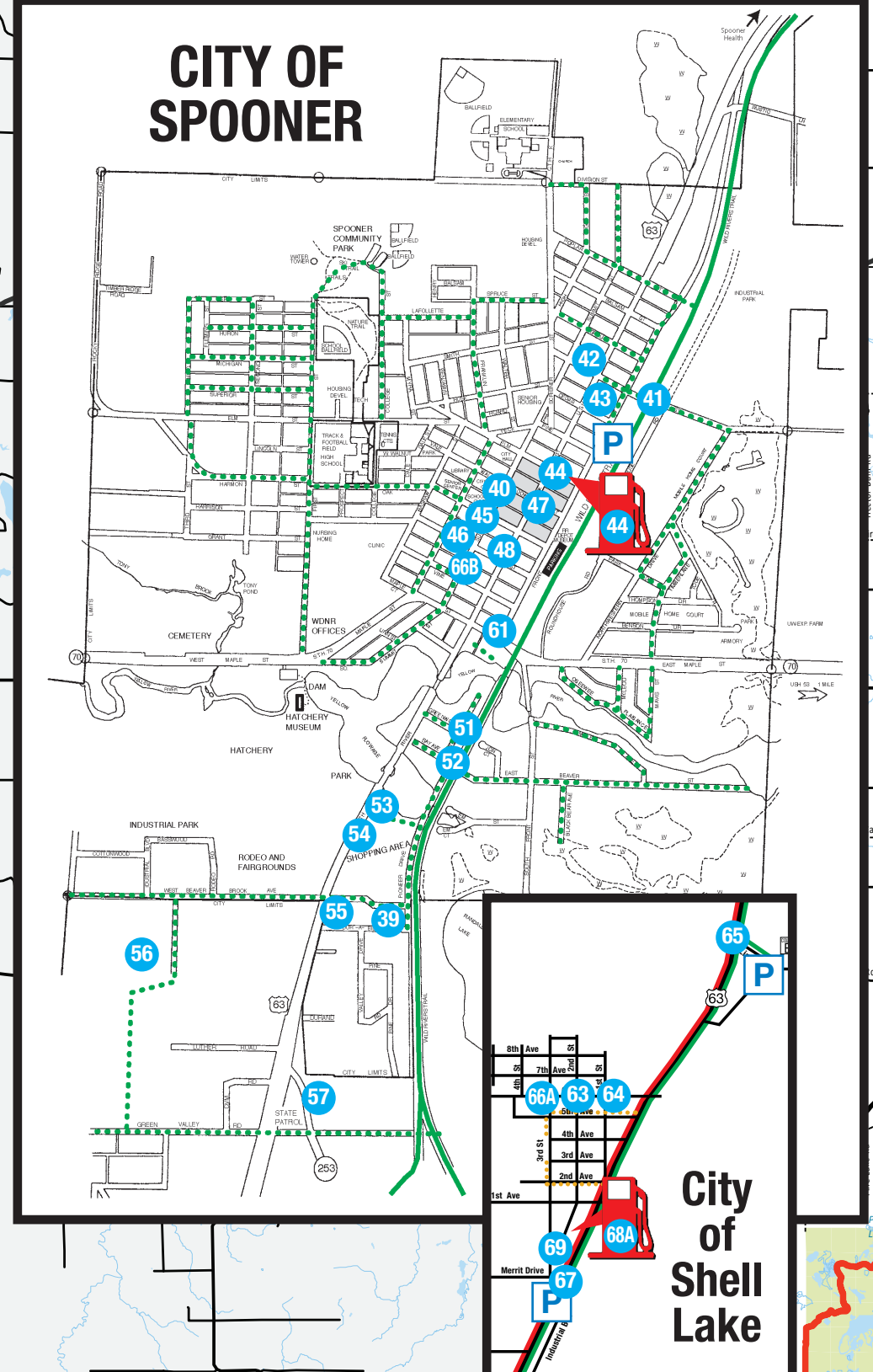
MAP ASSOCIATES

- Crystal Lake Bar
- Circle Pines Grill
- Schatzi's Chipmunk
- View Point Lodge
- Seaman's Resort
- Gruzy's
- Sportsman's Headquarters
- Wendy Place
- Victory Lane
- Wild River Trail Inn
- Longbranch
- Wild River Campground
- Outback Bar & Pizza
- Petit's
- Nelson Lake Landing
- Adventure RV
- Hayward Power Sports
- Runamuk
- Oak Ridge Inn
- Webb Lake Tavern
- Heartwood
- Pappy's
- Mac Lake Tavern
- Cabaret
- Glider's
- NextGen Powersports
- Silver Lake Saloon
- Wolf Point
- The Shop
- What the Heck
- The Still
- Northwinds Resort & Bar
- Lipsie Pines
- Trego Travel Center
- Hub's Riverbend
- Prime Bar
- Flatwater's Saloon
- Wild River Sport & Marine
- Spooner Window & Door
- Round Man Brewing Co.
- Norton Excavating
- Alley Cats Coffee
- GTC Auto Parts
- Holiday
- Jersey's
- Sacco Group Edina Realty
- Red Cross Pharmacy
- Hardware Hank's
- Tracks Bar & Family Dining
- Lakes & Trails
- Indianhead Credit Union
- Best Western Spooner River Place
- Tony's Riverside
- Econmart
- Ignite Dispensary
- Jock's Auto & Truck Repair
- Northwest Lodging
- Rummel's Tap
- Anchor Woods Campground
- Long Lake Bait and Tackle
- Saw This
- Perlick Distillery
- Klopp's
- Lakeview Bar & Grill
- Shell Lake Campground
- Shell Lake State Bank
- The 715
- Synergy
- AmeriVue Inn
- Wagon Wheel
- The Pioneer
- Rockford House
- The Landing on Long Lake
- Lincolnwood Resort
- Ed's Pit Stop
- Bear Tracks
- Mary's Bluegill Bar
- Whitetail Ridge
- Barronett Bar & Grill
- Red Brick Cafe
- The Roost
- Getaway
- Full Throttle
- Hauck Power Sports
- Airtec Rental
- Airtec Sports

NO TWO WHEEL MOTORIZED VEHICLES ALLOWED ON TRAILS AT ANYTIME

For Emergency Purposes Indicate Your 911 Marker Numbers

PLEASE NOTE
ALL SNOWMOBILE TRAILS ON COUNTY FOREST LAND ARE OPEN TO ATV USE FROM DECEMBER 1 TO MARCH 31
Only ATV connecting routes are shown. It is the operators responsibility to check with individual townships to see if additional roads are open.
ATV'S MUST ADHERE TO THE VEHICLE SPEED LIMIT UNLESS POSTED OTHERWISE



WASHBURN COUNTY 911 MARKER
TRL 915
TRAIL 25A