

Welcome to Rhyddings Park

Rhyddings Park was originally the grounds of a private house belonging to a local mill owning family.

The first house at Rhyddings was demolished in 1853 and re-built in the style of an early Victorian country house for Mr Robert Watson, who owned nearby Rhyddings Mill, and was also connected with Stonebridge Mill in Oswaldtwistle.

Rhyddings Hall, as the house was known, ceased to be a private residence in 1909 when it was acquired by Oswaldtwistle

Urban District Council along with its grounds, to provide a recreational facility for the people of Oswaldtwistle.

Today the layout of the park owes much to Mr Watson's house, which was situated behind the ornamental balustrade, until it was demolished in the 1930's.

Friends of Rhyddings Park is a community group that works with the Council and with other bodies to raise funding and to organise events in the park. If you are interested in getting involved with the park please visit www.rhyddingspark.org.uk for details.

Rhyddings Routes is a project funded by Big Lottery Awards For All and managed by the Civic Arts Centre on behalf of Friends of Rhyddings Park.

The idea behind the project is to get people walking around Oswaldtwistle a little more and exploring some of the great outdoor areas that we are lucky enough to have. There are four walks in the series that vary in difficulty and access. Some walks are suitable for wheelchairs and buggies, others involve crossing fields and stiles.

Each route is circular so you can join at any point and return to the same place to finish.

There are also activity sheets for young people which can be used in conjunction with the walks. Pick them up from various locations around around Oswaldtwistle or download from www.civicartscentre.co.uk along with all four of the maps.

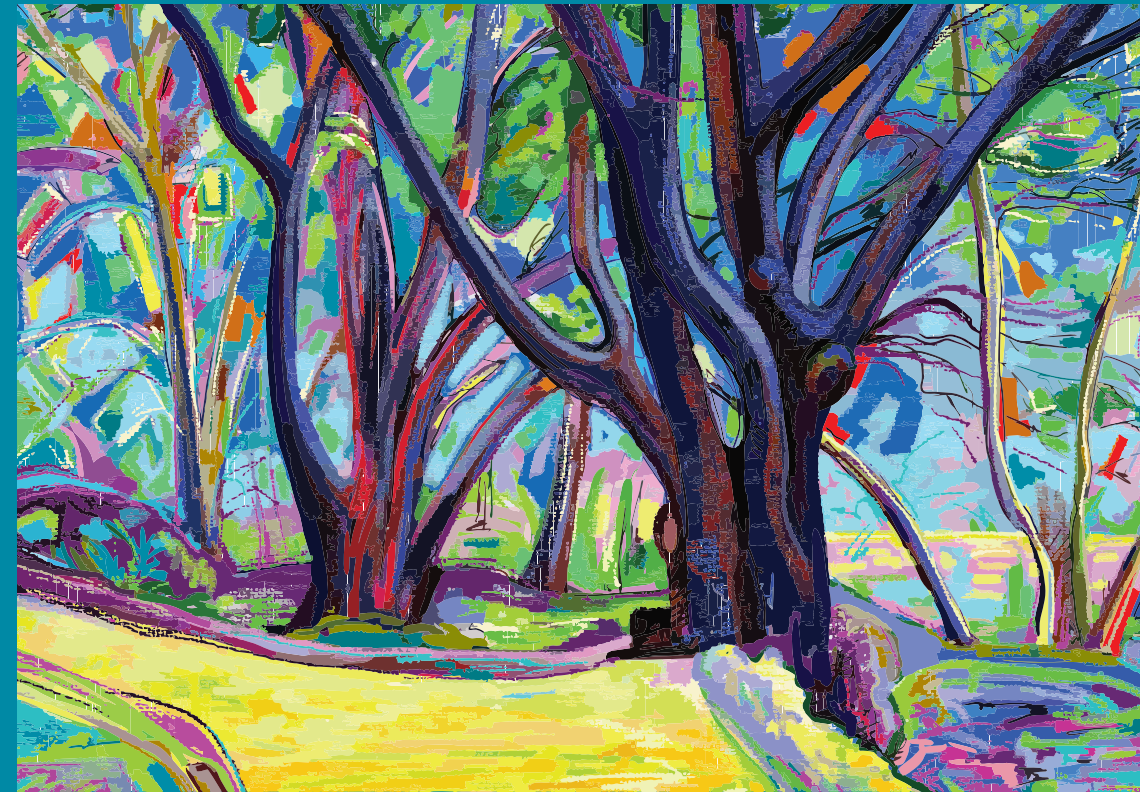
Thanks to Lucy Hamlin for devising the walks.

Notice:

Rhyddings Routes

Rhyddings Park to Civic Centre

Walk 1: Flat & Easy



Distance: 1 mile

Time: 20 minutes

Suitable for Wheelchairs: Yes

Suitable for Pushchairs: Yes

Start and End: All walks are circular, start wherever you want.



Friends of
Rhyddings Park



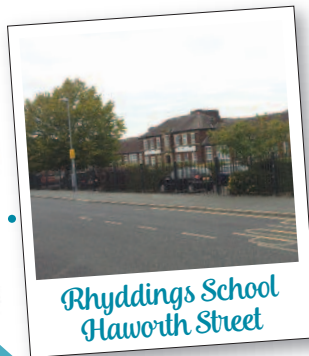
LOTTERY FUNDED

Rhyddings Routes

Walk 1



Civic Arts Centre



Rhyddings School
Haworth Street



St. Mary's RC Church
Cattow Hall Street



War Memorial



Rhyddings Park
Park Lane



Rhyddings Park



Stone Cross
Rhyddings Park



1. Enter from the Park Lane entrance and turn right, following the path around the park in an anti clockwise direction.
2. Just past the play area on the right hand side, you come to a fork in the path. Continue forward.
3. Follow the path turning left at the end, passing a monument in the park on your left. At the end of the path turn right and continue until you exit the park, turn right.
4. Continue along Park Lane and walk to the end, turning left down Hawthorn Avenue with St. Mary's RC Church on the left.
5. At the bottom of Hawthorn Avenue, turn left onto Catlow Hall Street and walk to the entrance of St. Mary's RC Church.
6. Cross the road and walk down Haworth Street, you will pass Rhyddings Business & Enterprise School on the right hand side.
7. Turn left onto Sun Street, the Civic Arts Centre will be ahead.
8. Turn right so that the Civic is on your left hand side and follow the building around to Union Road, turn left.
9. Continue along Union Road until you come to the War Memorial on the corner of Rhyddings Street and Union Road.
10. Turn left up Rhyddings Street and continue until you reach the start/end point at Rhyddings Park.