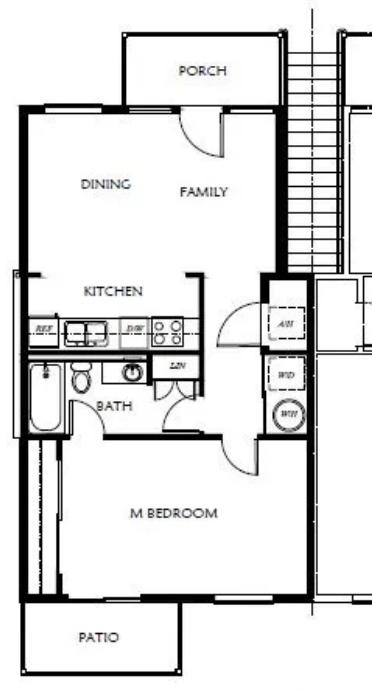




## Designed for YOUR Life

Access to businesses such as restaurants, gyms, health providers, shopping, groceries, animal clinic, banks, hair salons, and pet grooming are all within walking distance.

Interstate 8 and the Area Service Highway are close by and allow you to access all areas of Yuma County and beyond quickly and safely. YCAT bus stops are within walking distance.



-ADA COMPLIANT UNITS HAVE VARIATIONS OF DOORS AND APPLIANCES TO MEET REGULATIONS THAT COVER THESE APARTMENTS  
-FLOOR PLANS ARE FOR ILLUSTRATIVE PURPOSES ONLY. FEATURES ARE SUBJECT TO CHANGE AND/OR COULD VARY BY UNIT

**642 SQ. FT.**  
TYP. 1 BEDROOM END UNIT (1ST FLOOR)

1 Bedroom, 1 Bathroom, Kitchen & Living Room Sample Floorplan  
\$1300/month

3370 S Avenue 8E, Yuma, AZ 85365  
2 blocks South of 32nd Street

### CONTACT US

928-726-9248  
propertymanager@gmail.com

ADA Accessible Units available



# CIELO VERDE APARTMENTS

Designed for YOUR Life

The Cielo Verde Apartment Community will be a mixture of 148 modern, beautiful and efficient 1-, 2- and 3- bedrooms apartments in 15 separate two-story buildings.

We are partially open with seven buildings and the remaining buildings will be available by October 1, 2023.

You may apply to lease at our website below or contact us for more information.

[www.cieloverdeapartments.com](http://www.cieloverdeapartments.com)

Building Opening Schedules subject to change based on construction and supply issues. Please follow all signs and do not access construction areas for your safety and ours.

## Other Monthly Fees/unit

- RUBS (sewer, water & trash)
  - 1 Bedroom - \$75
  - 2 Bedroom - \$95
  - 3 Bedroom - \$105
- Property Liability Insurance - \$15
- Sales Tax - City of Yuma 1.7% on Rent payment only

## Move In Fees

Refundable Security Deposit

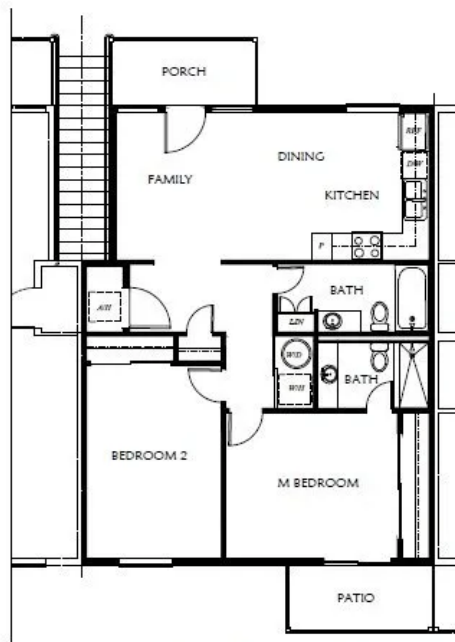
**\$600**

Pet Fee per pet up to 2 max

**\$300/each**

## Tenant Paid Utilities

Electricity paid directly to APS

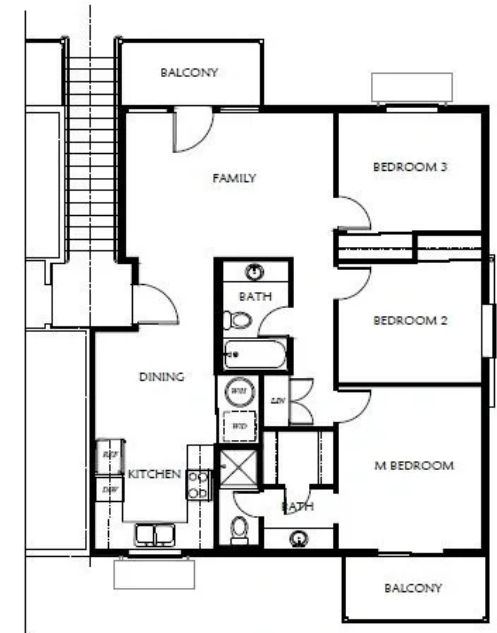


--ADA COMPLIANT UNITS HAVE VARIATIONS OF DOORS AND APPLIANCES TO MEET REGULATIONS THAT COVER THESE APARTMENTS  
 --FLOOR PLANS ARE FOR ILLUSTRATIVE PURPOSES ONLY, FEATURES ARE SUBJECT TO CHANGE AND/OR COULD VARY BY UNIT

**844 SQ. FT.**

TYP. 2 BEDROOM / 2 BATH UNIT (1ST FLOOR)

2 Bedroom, 2 Bathroom, Kitchen & Living Room Sample Floorplan  
 \$1500/month



--ADA COMPLIANT UNITS HAVE VARIATIONS OF DOORS AND APPLIANCES TO MEET REGULATIONS THAT COVER THESE APARTMENTS  
 --FLOOR PLANS ARE FOR ILLUSTRATIVE PURPOSES ONLY, FEATURES ARE SUBJECT TO CHANGE AND/OR COULD VARY BY UNIT

**984 SQ. FT.**

TYP. 3 BEDROOM / 2 BATH END UNIT (2ND FLOOR)

3 Bedroom, 2 Bathroom, Kitchen & Living Room Sample Floorplan  
 \$1750/month



In-Unit Washer/Dryer Combo



Stainless Steel appliances



Abundance of Natural Light via Doors/Windows



Deep Storage Cabinets in baths and kitchen



Tenant On-line portal to pay fees and rent



Pet Friendly

## Apartment Facilities



Swimming Pool & Hot Tub



Clubhouse and Ramada



Assigned Parking Space



Dog Stations



Onsite Property Manager



Multiple Vendors to choose from for Internet and Phone access



Playground Area

## About Cielo Verde Apartments

Cielo Verde Apartments community is the next step in the Cielo Verde Story that began more than 20 years ago. The area was designed to give more flexibility in life-style choices to make it more livable, while increasing access to pedestrian activities close to home. We've designed them for YOUR life.