

SIF Kuwait - Sastra Prathibha Contest 2020 – 2021**Junior – FINAL****Question:1**

Pure gold is _____?

- A. 17 Carat
- B. 20 Carat
- C. 22 Carat
- D. 24 Carat

Question:2

The powdery ash left behind on burning the strip of magnesium ribbon is

- A. Magnesium oxide
- B. Magnesium Hydroxide
- C. Ash of Mg
- D. Magnesium Peroxide

Question:3

Rhododendrons, heathers, pineapple, cotton and tea plants grow well in _____

- A. alkaline soil
- B. acidic soil
- C. rough soil
- D. neutral

Question:4

What is the average of 0.35 kg, 740g and 2060g?

- A. 1015
- B. 1050
- C. 1500
- D. 1005

Question:5

Which set of letters will come next in the series
BDZ, DGX, FJV, HMT, JPR, _____

- A. LTP
- B. MSP
- C. LSP
- D. LSO

Question:6

Which one of the following shows the correct sequence in the life cycle of silk moth?

- A. Larva , Pupa, Silk moth, Egg
- B. Egg, Larva, Pupa, Silk moth
- C. Egg, Pupa, Larva, Silk moth
- D. Silk moth, Egg, Pupa, Larva

Question:7

Goladhyaya deals with the mathematics of ?

- A. Spheres
- B. Arithmetic
- C. Algebra
- D. Trigonometry

Question:8

A freely suspended magnet always aligns itself in

- A. North-East
- B. North-West
- C. South-East
- D. North-South

Question:9

Paleobotany is the scientific study of _____?

- A. Plant nomenclature
- B. Plant species
- C. Plant fossils
- D. Grafting

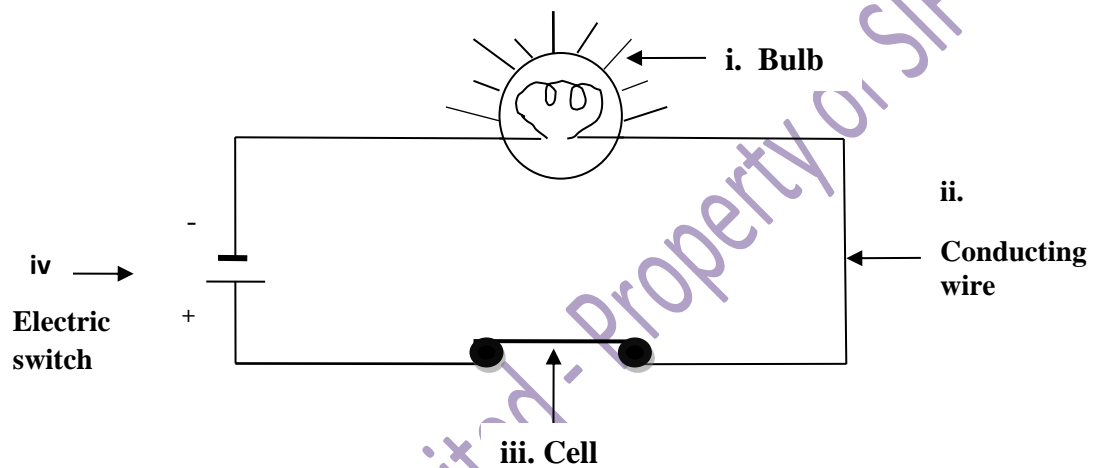
Question:10

Select the non-luminous object from the given following objects

- A. Stars
- B. Moon
- C. Fire flies
- D. Sun

Question:11

Sameera labelled the components of the electric circuit as shown in the figure. Identify the wrongly labelled components.



- A. i , ii and iii
- B. ii and iv
- C. iv and i
- D. iii and iv

Question:12

Who wrote the book 'Planned Economy of India'?

- A. P. C. Mahalanobis
- B. Thanu Padmanabhan
- C. M. Vishweshvarayya
- D. Rajendra Singh

Question:13

The fastest Missile in the world

- A. BrahMos
- B. Harpoon
- C. Shaheen
- D. Hellfire

Question:14

The bouncing of light by any smooth shiny surface is called _____ of light.

- A. Refraction
- B. Transmission
- C. Reflection
- D. Diffraction

Question:15

Number of times a particular observation occurs is called _____

- A. Average
- B. Frequency
- C. Mode
- D. Median

Question:16

What comes next RIVER, BROOK, STREAM, _____

1. POND
2. WATERFALL
3. LAKE
4. SEA

Question:17

Nandankanan Zoological Park is located in which state of India?

- A. West Bengal
- B. Rajasthan
- C. Odisha
- D. Jharkhand

Question:18

Raju takes 30 min to reach the school from home. If the speed of the bus is 40km/h, calculate the distance between his school and home?

- A. 35 km
- B. 20 km
- C. 325 km
- D. 50 km

Question:19

What is the name of world's longest highway tunnel opened in Himachal Pradesh recently?

- A. Parvat Tunnel
- B. Atal Tunnel
- C. Him Tunnel
- D. HP Tunnel

Question:20

Which of the following example show multiple motions?

- i. Ball rolling down through inclined surface.
- ii. Motion of pendulum of a pendulum clock.
- iii. The motion of a falling stone.
- iv. Rotation of the blades of a ceiling fan.

- A. i and ii
- B. iii and iv
- C. ii and iii
- D. only i

Question:21

Which ancient physician described 76 signs of various eye diseases?

- A. Sushruta
- B. Charaka
- C. Vagbhata
- D. Varahamihira

Question:22

Match the following and choose the correct option.

	Column - I		Column - II
i	Conduction	a.	Mode of heat transfer in liquids and gases.
ii	Convection	b.	Heat transfer that does not necessarily need a medium.
iii	Radiation	c.	Mode of heat transfer in solids.

- A. i-c, ii-a, iii-b
 B. i-a, ii-c, iii-b
 C. i-b, ii-a, iii-c
 D. i-a, ii-b, iii-c

Question:23

Replace the question mark (?) with correct option

AZ	DW	GT
BY	EV	?
CX	FU	IR

- A. JI
 B. KT
 C. HS
 D. AD

Question:24

Which of the following is correct with respect to the above statement?

Statement 1: Mercury is not used in digital thermometer

Statement 2: Mercury is a toxic substance, difficult to dispose off if the thermometer breaks.

- A. Statement 1 is correct.
 B. Both the statements are correct.
 C. Statement 2 is correct.
 D. Neither 1 nor 2 is correct.

Question:25

Name of the Border-Line between India and China.

- A. Curzon Line
- B. McMahon Line
- C. Radcliffe Line
- D. Durand Line

Question:26

Cotton plants are well cultivated at places having _____ soil and _____ climate respectively.

- A. Sandy, Humid
- B. Loam, Cold
- C. Black, Warm
- D. Silt, Humid

Question:27

First Indian elected as the President of International Astronomical Union(IAU)?

- A. Vainu Bappu
- B. P. C. Ray
- C. Meghanad Saha
- D. Homi J Bhabha

Question:28

Ram drives 10 KM straight and then 10 KM to the right. Then every time turning to his left, he drives 5, 15, and 15 KM respectively. How far is he from the starting point?

- A. 20 KM
- B. 10 KM
- C. 15 KM
- D. 5 KM

Question:29

Complete the following chemical reaction



- A. P1- Iron sulphate, C1 - Greenish + P2- Copper, C2 -Reddish brown

- B. P1- Iron sulphate, C1 - Orange + P2- Copper, C2 – Black
- C. P1- Ferrous sulphate, C1 - Blue + P2- Copper, C2 – Brown
- D. P1- Iron sulphate, C1 - Yellow + P2- Copper, C2 - Reddish brown

Question:30

Vikram Sarabhai Space Centre (VSSC) is located at?

- A. Bangalore
- B. Mumbai
- C. Jaipur
- D. Thiruvananthapuram

Question:31

The fabric made out of home spun yarn is called _____.

- A. Jharna
- B. Khadi
- C. Khes
- D. Mull

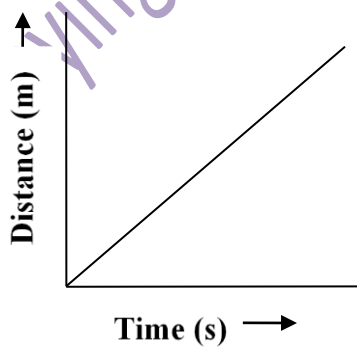
Question:32

Tsunami is taken from which language?

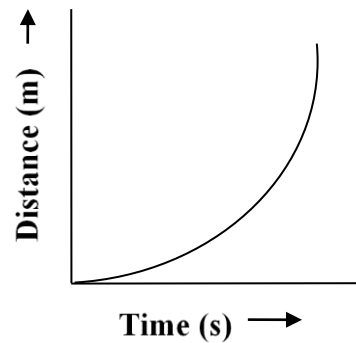
- A. Chinese
- B. Latin
- C. Korean
- D. Japanese

Question:33

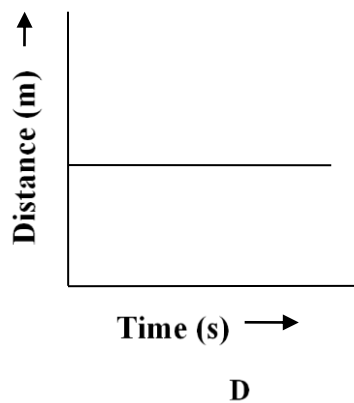
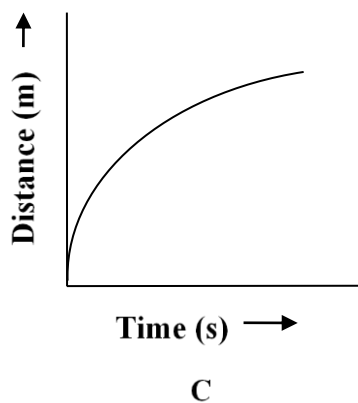
Which of the following figure represents a car moving with constant speed?



A



B

**Question:34**

What does the 3 'R' means

- A. rain, reuse and recycle
- B. rotting, reduce and reuse
- C. reduce, reuse and recycle
- D. recycle, rain and rotting

Question:35

A very popular medicinal plant known for sustaining youth?

- A. Brahmi
- B. Tulsi
- C. Neem
- D. Aloe Vera

Question:36

Phenolphthalein indicator was used to find the nature of the samples X and Y.

	Sample	Colour change	Nature of sample
i.	X	Colourless to Pink	Basic solution
ii.	Y	Pink to colourless	Acidic solution
iii.	X	Colourless to Pink	Acidic solution
iv.	Y	Pink to colourless	Basic solution

Choose the correct option, showing the nature of samples based on the colour change.

- A. ii and iii
- B. iii and iv

- C. i and iv
- D. i and ii

Question:37

What precautions must be taken if a storm is accompanied by lightning?

- i. We should take shelter under an isolated tree.
- ii. A car or bus is a safe place to take shelter.
- iii. Do not sit near a window.
- iv. We should lie on the ground.

- A. i and iii
- B. ii and iv
- C. ii and iii
- D. iii and iv

Question:38

Who discovered Mercurous Nitrate in 1896?

- A. Acharya P. C. Ray
- B. Dr. B. P. Pal
- C. Panchanan Maheswari
- D. Bhaskaracharya

Question:39

Mountaineers carry oxygen cylinder while climbing high mountains because

- i. Oxygen is used as fuel for making fire.
- ii. Oxygen keeps them warm at low temperature.
- iii. Oxygen level in the air decreases at higher altitude.
- iv. Oxygen gas is absent in the air.

- A. i and iv
- B. ii and iii
- C. Only iii
- D. both i and ii

Question:40

Who is the founder of Wipro Ltd?

- A. Azim Premji
- B. Narayana Murthy

- C. Shiv Nadar
- D. Anand Mahindra

Question:41

Blue Revolution in India was aimed for the increased production of _____?

- A. Honey
- B. Fish
- C. Milk
- D. Chicken

Question:42

Water is made safe for drinking and cooking by using which of the following disinfectants?

- A. Chlorine
- B. Ozone
- C. Only chlorine
- D. Both 1 and 2

Question:43

Central Institute of Medicinal and Aromatic Plants is located at?

- A. Lucknow
- B. Bangalore
- C. Mysore
- D. Wayanad

Question:44

The commonly used natural indicator litmus is extracted from

- A. Rose
- B. Purple cabbage
- C. Lichens
- D. Beet

Question:45

Complete the series 18, 10, 6, 4,

- A. 1
- B. 3
- C. 0
- D. 2

Question:46

Who wrote Ganitakaumudi?

- A. Panini
- B. Madhava
- C. Narayan Pandit
- D. Aryabhatta

Question:47

The process of decantation cannot be used to separate which of the following mixtures?

- A. Saw dust and water
- B. Mixture of oil and water
- C. Deposits from muddy water
- D. Mixture of kerosene and water

Question:48

Choose the plants that have two or more edible parts.

- A. Sugarcane, Onion, Radish
- B. Banana, Spinach, Sugarcane
- C. Banana, Onion, Radish
- D. Onion, Radish, Sugarcane

Question:49

Which of the following is not an example of magnetic substance?

- A. Iron
- B. Nickel
- C. Silver
- D. Cobalt

Question:50

Which of the following is a type of Covid -19 detection test?

- A. Polymerase Chain Reaction
- B. Antigen Test
- C. Antibody Test
- D. All of the above

Question:51

National Sport Day in India is celebrated in remembrance of which sports personality

- A. Olympian Suresh Babu
- B. Sachin Tendulkar
- C. Major Dhyan Chand
- D. Milkha Singh

Question:52

Which one is different from the other three?

- E. Lion
- F. Wolf
- G. Panther
- A. Tiger

Question:53

Who was the First Indian to be elected as a Fellow of Trinity College?

- A. Srinivasa Ramanujan
- B. C. V. Raman
- C. Vainu Bappu
- D. Dr. R. A. Mashelkar

Question:54

Choose the things from the list given that cannot be recycled

Paper, Glass, Plastic, Old clothes, Metal, Syringes.

- A. Paper and glass
- B. Plastic and metal
- C. Old clothes
- D. Syringes

Question:55

There are five rivers I, II, III, IV, V. River I is shorter than II, but longer than V. River III is the longest. IV is a bit shorter than II and a bit longer than I. which of the following is the shortest river?

- A. III

- B. V
- C. IV
- D. I

Question:56

Carbohydrates can be tested by using _____

- A. iodine solution
- B. caustic soda
- C. copper sulphate
- D. Fehling solution

Question:57

Engineer's Day is celebrated in India on?

- A. September 15
- B. June 5
- C. February 28
- D. December 2

Question:58

Which chemicals are used to test the presence of proteins in the food sample of "Gram flour paste"?

- A. Caustic soda solution
- B. Copper sulphate solution
- C. Iodine solution
- D. Both 1 and 2

Question:59

Identify the part of the plant which carries out the following functions?

- i. It conducts water and minerals to leaves and other parts of the plant.
- ii. It transports the food prepared by photosynthesis from leaves to rest of the plant.

- A. Root
- B. Fruit
- C. Stem
- D. Flower

Question:60

Solve $32 \div 8 + 2 = \underline{\hspace{2cm}}$?

- A. 5
- B. 6
- C. 8
- D. 3.2

Question:61

First Director General of CSIR?

- A. Shanti Swaroop Bhatnagar
- B. Vijay Bhatkar
- C. Homi J Bhaba
- D. Vikram Sarabhai

Question:62

Choose the plants which shows the following characteristics

- i. Leaf venation is reticulate. ii. They possess tap root system.

- A. Coconut
- B. Corn
- C. Apple
- D. Date Palm

Question:63

The food prepared by green leaves is stored as

- A. Proteins
- B. Sugar
- C. Fats
- D. Starch

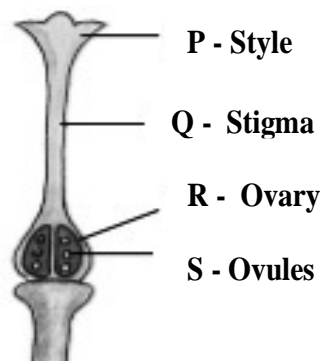
Question:64

Ancient scholar who founded the Trigonometric formulas?

- A. Brahmagupta
- B. Varahamihira
- C. Nagarjuna
- D. Sangamithra

Question:65

Observe the below given structure carefully and correct the wrongly labeled parts of pistil by choosing the correct option.



- A. P- Stigma, Q- Style, R- Ovary, S - Ovules
- B. P- Stigma, Q- Ovary, R- Style, S - Ovules
- C. P- Ovules, Q- Style, R- Stigma, S - Ovary
- D. P- Stigma, Q- Ovules, R- Ovary, S - Style

Question:66

Deficiency of which nutrients over long period shows the following disorders in a person

- i. Stunted growth. ii. Discoloration of hair. iii. Swelling of face. iv. Skin diseases.

- A. Vitamins
- B. Proteins
- C. Carbohydrates
- D. Minerals

Question:67

Who is known as 'The Man of Miracle Drugs'?

- A. Dr. R. A. Mashelkar
- B. P. C. Ray
- C. Bhava Mishra

D. Yellapragada SubbaRow

Question:68

Which of the following adaptive features helps the deer to survive from its predators?

- A. Long ears to hear movements
- B. Eyes are present on the sides of its head
- C. Speed of the deer
- D. All of these

Question:69

Decide which of the conclusions definitely follows from given statements.

Statement: Some lions are tigers. Some tigers are clever.

Conclusion: (I) Some lions are clever; (II) all tigers are lions

- A. Only I is true
- B. Only II is true
- C. Neither I nor II is true
- D. Both I and II is true

Question:70

Maithri Missile Project is a joint venture between India and which country?

- A. Russia
- B. USA
- C. France
- D. Israel

Question:71

'Ishihara Test' is used to determine?

- A. Night blindness
- B. Scurvy
- C. Thyroid
- D. Diabetics

Question:72

The volume of a cuboid with length, breadth and height as $5x$, $3x^3$ and $7x^4$ respectively is:

- A. $105x^4$
- B. $105x^2$
- C. $105x^8$
- D. $105x$

Question:73

Headquarters of Uranium Corporation of India is located at?

- A. Jaipur
- B. Trombay
- C. Thumba
- D. Singhbhum

Question:74

When is Parakram Divas celebrated in India?

- A. January 19
- B. January 23
- C. January 12
- D. January 31

Question:75

Find the value of Y if $106.7 + 3.6 = Y \div 10$

- A. 1.103
- B. 1103
- C. 110.3
- D. 10.13

Question:76

If we add, $3xy + 5yz - 3zx$, $4yz + 9zx - 4y$ and $-3xz + 5x - 2xy$, then the answer is:

- A. $xy + 9yz + 3zx + 5x - 4y$

- B. $5xy - 9yz + 3zx - 5x - 4y$
- C. $5xy + 10yz + 3zx + 15x - 4y$
- D. $xy + 10yz + 3zx + 5x - 6y$

Question:77

In which field did Dr. C. V. Raman start his research work?

- A. Optics
- B. Electronics
- C. Acoustics
- D. Kinetics

Question:78

Which of the following is same as STROKE

- A. STROKS
- B. ROKETS
- C. EKORTS
- D. STROKE

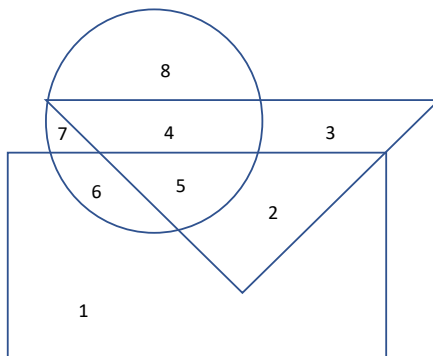
Question:79

RSTPO : IHGKL :: RJIAK : _____?

- A. IQRZP
- B. AZBKL
- C. RPIJO
- D. KHOAP

Question:80

In the following figure, the triangle represents doctors, the circle represents players and the rectangle represents artists. Study the figure carefully and find the number of doctors who are players, but not artists.



- A. 5
- B. 3
- C. 4
- D. 2

Copying Strictly Prohibited - Property of SIF Kuwait