

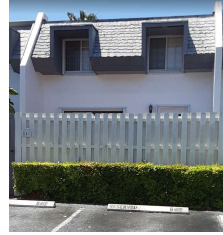
Appendix C

Roof Tiles and Shingles:

Call Management Company to obtain application for approval if the entire roof needs to be replaced.

Homes built around 1974: Mariner Homes:

- flat asphalt roofs
- cedar wood shingle (shingle surface is smooth)
- installed staggered (“staggered style” has each individual shingle at a different height – see photo)
- Roof shingle must remain as the original style.



Homes built around 1990: the majority of homes with white walls and burgundy trim:

At this time, please choose one of two approved tiles below:

- **Roof Tile – Cement “S” Tile Profile**
- **Manufacturer:** Boral
- **Profile:** Barcelona 900
- **Color:** Burnt Mission
- (red/gray color, glossy top finish, gray-cement back)



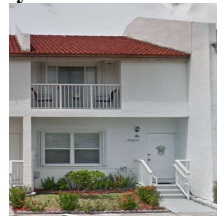
OR

- **Roof Tile – Cement “S” Tile Profile**
- **Manufacturer:** Boral
- **Profile:** Barcelona 900
- **Color:** Gold Dust
- (solid red color, matte top finish, colored red throughout)



Homes on 82nd Ave built around 2002 with white walls with burgundy trim

- **Roof Tile – Curved Tile Profile**
- **Manufacturer:** Boral
- **Profile:** Villa 900
- **Color:** Gold Dust
- (solid red color, matte top finish, colored red throughout)



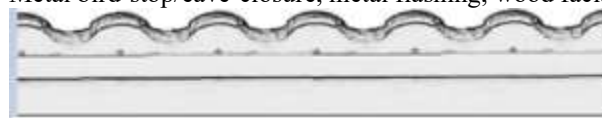
Alton Homes built around 2003: yellow walls, located at SW 80th CT. & SW 79th PL.

- **Roof Tile – Curved Tile Profile**
- **Manufacturer:** Boral
- **Profile:** Villa 900
- **Color:** Gold Dust
- (solid red color, matte top finish, colored red throughout)



Metal eave-closure:

Metal bird-stop/eave-closure, metal flashing, wood fascia board, and soffit must be painted using the approved color.



<- Metal Bird Stop/Eave Closure
<- Metal Flashing
<- Wood Fascia Board

} Painted the same color