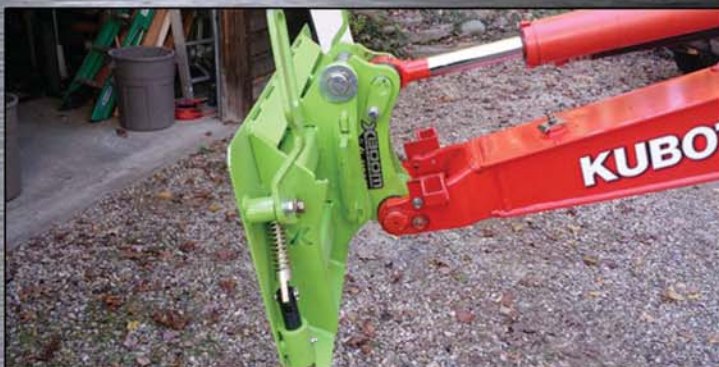




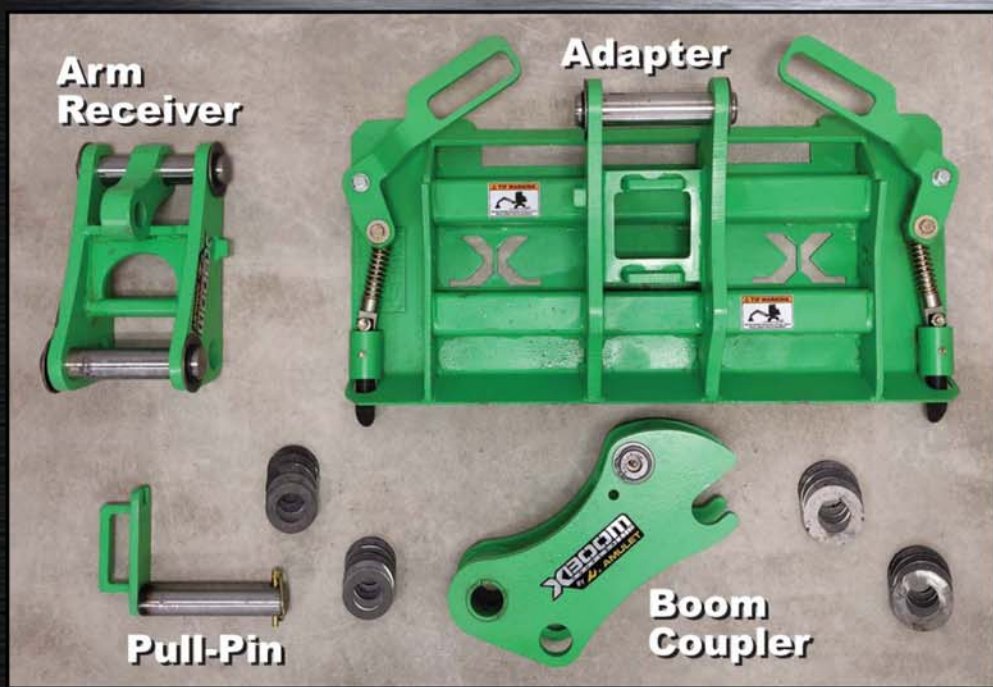
**A Mini-X as a Legit Tool Carrier?... You Bet!**



# Dig like always, then Easily Change to a Tool Carrier!



## The X-Boom Coupler® “Kit” Includes:



## X-Boom Coupler® Model Sizes:

XB Model	Fits Mchn. Wt. (LB)	Fits Mchn. Wt. (Metric Ton)	Adapter Choice <sup>(A)</sup>
15	4,000	1.5 - 1.7	MI (Mini-Walk Behind)
25	6,000	1.8 - 2.6	MI -or- MU (Mini-Universal)
30	7,000	2.7 - 3.2	MI -or- MU
35	8,000	3.3 - 3.8	MU -or- SU (Std. Universal)
45	10,000	3.9 - 4.6	SU
50	11,000	4.7 - 5.3	SU
60	13,000	5.4 - 6.0	SU

### (A) Three (3) Adapter Choices - You Pick!

- (MI) Mini-Walk Behind Adapter: Compatible attachments: Dingo, Boxer, Ditch-Witch, Vermeer, etc. Bucket Range: 32-in.-48-in
- (MU) Mini-Universal Adapter: Compatible attachments: 463, S70, MT50, MT52, MT55 & MT85. Bucket Range: 36-in.-54-in.
- (SU) Standard Universal Adapter: Compatible with all standard full-size universal skid steer attachments. Bucket Range: 54-in.-84-in.



**X-Boom Coupler, LLC**  
Sales, Support & Demos  
Paul, your “X-Boom eXpert”  
Tel/Txt: **440-823-1562**  
pbelliveau@xboomcoupler.com  
www.xboomcoupler.com



**AMULET Manufacturing**  
Manufacture, Sales & Support  
Tel: **(800) 526-8538**  
www.amulet.com