

# FAT QUARTERLY

Publication of the Eastern Long Island Quilters' Guild

May 2022

## Future ELIQG Activities

**Saturday, June 11<sup>th</sup>** (doors open at 9:30; meeting starts 10) at the Old Steeple Church, we will have Binding Demonstrations (you may have thought there was only one way to bind a quilt - not so!). Bring your UFO challenge 1 & 2 (since the March meeting was a snow day, bring up to two UFO's completed in 2022, for a total of four UFO's by the end of the year). There will be a tracking sign-up sheet for end of the year prizes! Quilt Retreat at Camp DeWolfe deposit of \$150 to be collected.

**Wednesday July 6<sup>th</sup>** (doors open 6:30; meeting starts 7) at the Old Steeple Church, will feature the Ice Cream Social (bring a favorite topping to share; we'll provide the ice cream).

**July** (date, time & place to be determined) Jo Anne Powell Workshop: Techniques for using a brush & acrylic paint to write on & illustrate your unlaundered quilt fabric (see photo on p. 6).

**Saturday September 10<sup>th</sup>** (doors open at 9:30; meeting starts 10) at the Old Steeple Church, Paula Nadelstern's Lecture & Workshop Opulent Ornament.

**Wednesday, October 12<sup>th</sup>** TBD - President's Challenge (details on page 2). Prizes!

**Saturday November 5<sup>th</sup>** (doors open at 9:30; meeting starts 10) at the Old Steeple Church – Mystery Quilt Reveal. Prizes!

**December Christmas Party** (date/time/place TBD)

**February 10<sup>th</sup> - 12<sup>th</sup>, 2023** Quilt Retreat at Camp DeWolfe in Wading River on the Sound. Room & food: \$280/person. Deposit of \$150 will be accepted at the June quilt meeting.

## CONTENTS

<b>ELIQG Activities.....</b>	<b>1</b>
<b>ELIQG Board.....</b>	<b>1</b>
<b>President's Challenge .....</b>	<b>2</b>
<b>Hallockville Quilt Show .....</b>	<b>2</b>
<b>Mystery Quilt.....</b>	<b>3</b>
<b>Northern Star Portraits.....</b>	<b>4-5</b>
<b>Eastern Star Exhibit .....</b>	<b>6</b>
<b>Guild Scraps.....</b>	<b>7</b>

## ELIQG Board

President .....	Karen Nicholson
1st VP/Programs.....	Kathy Lake
2nd VP/Emails .....	Yvette Acevedo
Recording Secretary.....	Bettina Tripp
Corresponding Secretary.....	TBA
Treasurer .....	Nancy Raynor
Membership Chair.....	Sharon McKenna
Newsletter Editor .....	Jo Anne Powell
Website Chair.....	Colleen Shea
Mystery Quilt .....	Kathy Lake

# President's Challenge



Pick a magazine from the President's Mystery Bag.  
Pick a number from the President's Number Bag.  
Find the page number in the magazine.

Find something on that page to inspire your quilt.

It could be from a picture on the page.

Or a part of a picture on the page.

A word or words on the page.

Certain colors.

Be creative and have fun!

Quilt can be any size/ shape.

**The President's Challenge is due October 12th.**

Save your magazine to share at the October meeting. The label on back of quilt should have magazine used, your name and the name of your quilt. Don't forget a sleeve to hang quilt.

---

## Hallockville Quilt Show

Are you as starved for a quilt show as I am? Well, if you head out to the North Fork on August 20<sup>th</sup> or 21<sup>st</sup>, your urge will be satisfied! ELIQG will be hosting a quilt show of 50 of their members' quilts in the barn at the Hallockville Museum Farm, located at 6038 Sound Avenue, Riverhead, on the north side of the road. Enter the property at the driveway next to the main sign at the brown shingled house. Parking is immediately behind the building. The event is free!

Walking around Hallockville Museum Farm may be like taking a step back in time! Hallockville is listed on the National Register of Historic Places and is a Riverhead Town Landmark, comprised of 28 acres along with 19 historic houses, barns and outbuildings ranging from the mid-18th century Hallock Homestead to the Depression-era Cichanowicz Farmhouse. Besides seeing 50 sensational quilts (some of which will be available for purchase) and the President's Challenge quilts, you're sure to see familiar smiling faces!



The guild will be selling bags of scraps, jelly rolls, fat eighths, fat quarters, and yards & yards of lovely fabric for next-to-nothing! The guild will be also selling raffle tickets for three handsome handcrafted prizes: a queen size quilt in bright modern colors made by guild members

and quilted by Karen Nicholson, a smaller version quilted by Brigitte Mazzaferro, and woven rug made by JoAnne Madalena. Look for the basket raffle of new non-quilt-related goods which will interest the family member or friend coerced to attend the quilt show with you.

The North Fork is beautiful any time of year, but late summer is spectacular! I hope that you will come out for the day and support ELIQG's effort to promote interest in quilts arts. (You may want to visit Briarmere Farms at 4414 Sound Ave, Riverhead on the way home for fresh vegetables or a delicious pie to further satisfy that hunger....)

– Brigitte Mazzaferro

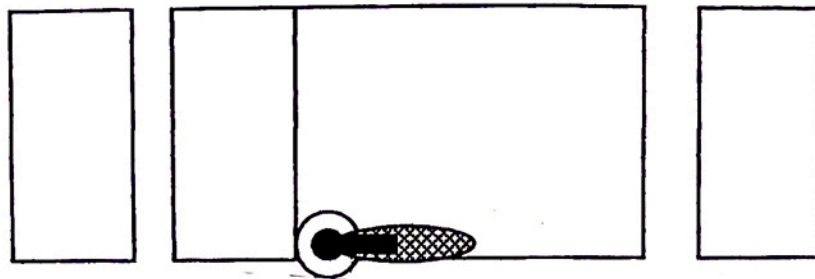
# ELIQG 2022 Mystery Quilt

Please refer to the April newsletter, located on the ELIQG website, for fabric requirements and instructions for Months #1 & 2.

## Mystery Quilt Month # 3

Remove background fabric from baggie #3

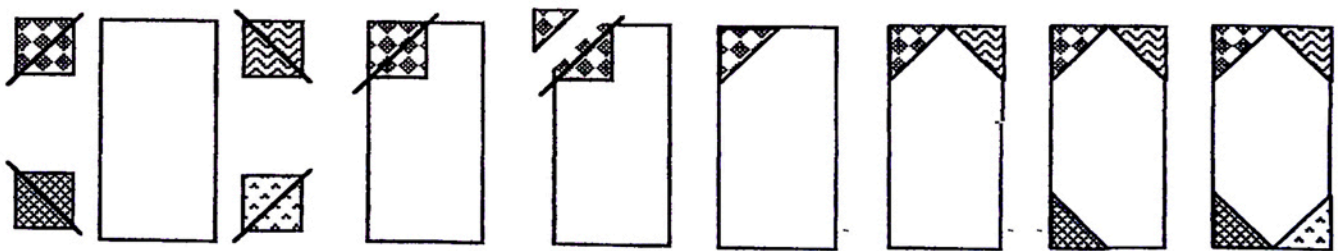
1. A. Background fabric: Do not use SELVAGES and cut strips apart every 4 1/2". Need 20 units. Part 1.



- B. Assorted fabrics: Do not use Selvages and cut 2 1/2" squares. Need need 80 units. Part 2.

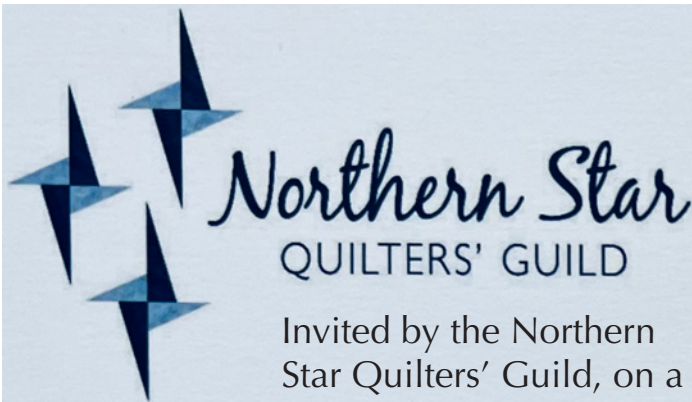


2. Draw diagonal lines on squares. Use 4 different squares per rectangle. Stitch on diagonal lines. After you stitch each square trim excess and press away from rectangle. Need 20 units.



Return to baggie #3

Stay tuned to the newsletter for the next installment!



Invited by the Northern Star Quilters' Guild, on a bus arranged by the Smithtown Stitchers, a large group of Eastern Long Island Quilters traveled to Purchase, NY to view Northern Star's "World of Quilts." Smaller than their previous shows, there were hundreds of wonderful quilts, lectures, books for sale, and two aisles of vendors. Special exhibits, as well as member quilts, featured fabulous portraits - of particular interest to art quilters.

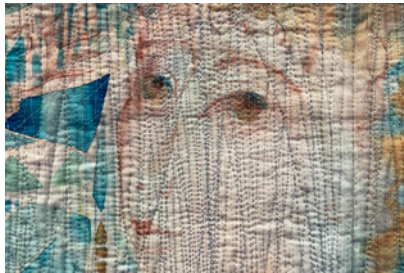


Portraits of her lovely daughters were designed & quilted by Jennifer Kramer.

Detail of Barbara LaBrake's 2017 Cherrywood submission.



A hand-painted portrait detail from Tatiana Ivina.



These stunning details of original portraits, designed by Donna Chambers, were raw-edge appliquéed and machine quilted.



Leni Levenson Wiener created these eight cropped quilts from the portraits of the 20th century anthropological photographer, Edward Curtis - plus Harriet Tubman's portrait.

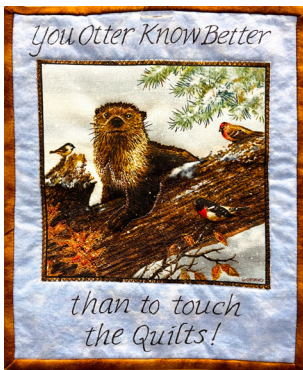
# Recent Long Island Quilt Exhibit

The Evening Star Quilters from Mineola exhibited their work at the Hillside Public Library in New Hyde Park April 30<sup>th</sup> to May 6<sup>th</sup>. The event also featured member demonstrations, quilt raffle ticket sales, complimentary magazines, and free invitations to the next meeting.

**Kathleen Dehler effectively assembled a collection of sashiko pieces within star blocks. The combination of colors and textures added to the eye appeal.**



Betty Belford & Kim Young created this colorful woods.



Examples of the ESQ clever "do not touch" signs.

Peggy Cahill paper-pieced American Beauty.

The Evening Star Quilters are pleased to announce that their **Harvest of Quilts XVIII Quilt Show** will be held November 5<sup>th</sup> and 6<sup>th</sup>, 2022 at the Mineola Community Center.

# Guild Scraps

The Fat Quarterly provides important guild news - information such as meeting schedules and topics, updates from the board (the directory, our quilt show info, President's Challenge details, Mystery Quilt instructions...), and special features (like workshop reviews, neighboring quilt shows).

The intent of this column is an opportunity for all members of the guild to contribute something to the newsletter:

- Have you learned any new tips or tricks that you want to share with the guild?
- Any quilt-related events or shows in the tri-state area you think would interest guild members?

- Any workshops you recently attended outside of the guild that you enjoyed, or that are upcoming?
- Are there any quilts you have recently made that you would like to share with your fellow guild members and are not able to attend the monthly meetings?
- For our snowbird friends, have you entered any quilts in shows down south where you received a ribbon?

Let's make this an interactive way to keep each other updated as we all cannot get together face-to-face every month at the normal guild meeting. Send an email to [eliqnews@gmail.com](mailto:eliqnews@gmail.com) by the first of the month to be added to Guild Scraps!

---

*Continued from page 1:*

The **Jo Anne Powell Workshop** to be held in July (date, time & place to be determined) will provide techniques for using a brush & acrylic paint to write on & illustrate your unlaundered quilt fabric – for individual pieces or a whole cloth quilt.

One morning, about 25 years ago (!), while Jo Anne was writing with calligraphy on a quilt, her mother-in-law telephoned. After a long conversation, Jo Anne went back to work, but the distraction caused a spacing problem. She resolved it by painting a kitty on her cat quilt! See many other examples during her trunk show this summer!

