

FAT QUARTERLY

Publication of the Eastern Long Island Quilters' Guild September 2022

Please Join Us at These ELIQG Activities:

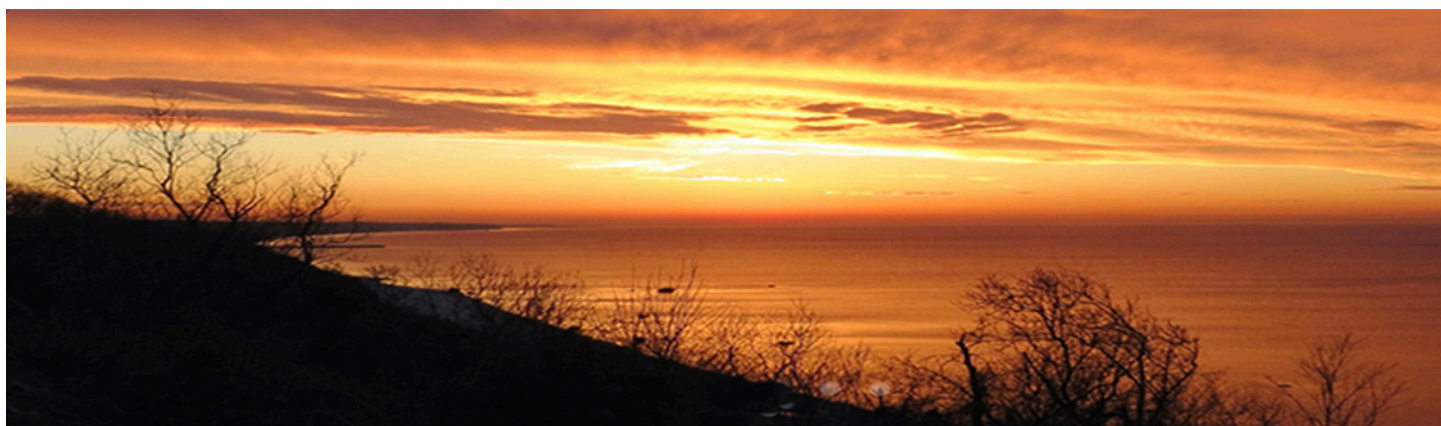
Saturday, September 10th (open at 9:30; starts 10 AM at the Old Steeple Church)
Paula Nadelstern's Lecture & Workshop Opulent Ornament. If signed up for Paula's workshop, please mail your check to ELIQG, Box 332, Riverhead, NY 11901.

Wednesday, October 12th TBD - President's Challenge – details on page 2). Prizes!

Saturday, November 5th (open at 9:30; starts 10 AM at the Old Steeple Church)
Mystery Quilt Reveal – Prizes!

December Christmas Party (date/time/place TBD)

February 10th - 12th, 2023 Camp DeWolfe Quilt Retreat (Wading River on the Sound)
Room & food: \$280/person. Payment will be accepted at the Sept. 10th quilt meeting.



CONTENTS

ELIQG Activities.....	1
ELIQG Board.....	1
“Opulent Ornament” Workshop.....	2,3
Hallockville Quilt Show	4
Sunshine & Shadows	4
President’s Challenge	4
ELIQG Mystery Quilt	5,6,7
Guild Scraps.....	8

ELIQG Board

President	Karen Nicholson
1st VP/Programs.....	Kathy Lake
2nd VP/Emails	Yvette Acevedo
Recording Secretary.....	Bettina Tripp
Corresponding Secretary.....	TBA
Treasurer	Nancy Raynor
Membership Chair.....	Sharon McKenna
Newsletter Editor.....	Jo Anne Powell
Website Chair.....	Colleen Shea
Mystery Quilt	Kathy Lake

On Saturday, September 10th, be sure to arrive by 9:45 at the Old Steeple Church for one of our ELIQG highlights of the year! Paula Nadelstern will present her fabulous Opulent Ornament kit!

SUPPLIES

NOTE: The following list is for a 6" ornament. Please adjust for different sizes accordingly. Also, since the goal of this embellishing technique is to create a one-of-a-kind bedazzled object, the following amounts are approximate and the embellishments are suggestions.

- One 6" Styrofoam ball
- Assorted sequins of varied sizes so one can be layered on another:
 - Layer a shimmery iridescent sequin on a larger, flat-colored sequin
 - Use novelty sequins shaped like half-moons, stars and flowers
- Assorted beads:
 - Because of its size, the head of a standard pin covers up the color of a standard seed bead (11°). Slightly larger beads (6°) are more effective but their holes are too big for a standard pin. Use a small seed bead to prevent the pin from slipping through: insert a pin through a seed bead through a larger bead. The seed bead color can be the same or contrast with the larger bead.
- Pins:
 - 1/2 lb of #17 plain steel pins sometimes called Dressmaker pins
 - Also: Glass colored pins, colored map tacks, decorative upholstery tacks
- Fabric scissors
- Thread
- One Dollmaker's Needle (about 5" long)
- Plastic loop or ring for hanging
- Bead tray or small dishes
- Consider method for bead salvage at end of project (EX: small baggies)

FABRIC

One ball needs 6 motifs in all: two large medallions and four small ones positioned along the selvege. Sometimes you might need a fifth small motif to hide the raw seams along the equator.

See back cover for other collection/color choices and links to other fabric sources, or visit www.paulanadelstern.com or www.benartex.com.



THE OPULENT ORNAMENT

BY PAULA NADELSTERN

Alternate fabrics you can use for *The Opulent Ornament*

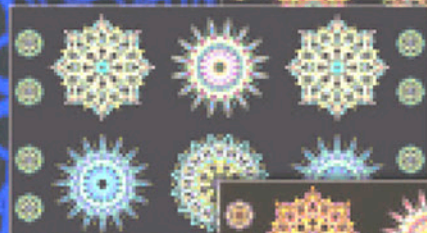


4560-24
Olive/Pink

**The
Patternista
Panels**
(Used for instructions)



4560-38
Orange/Turquoise



4560-45
Blue/Green



4560-62
Purple/Red

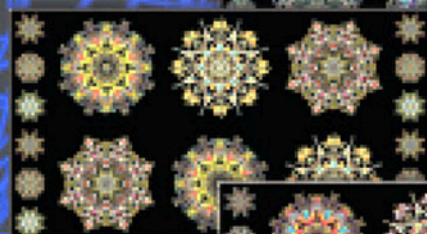


4560-24
Olive/Pink

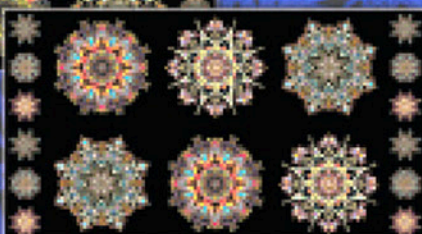
**The
Chromazone
Panels**
(Available Feb/Mar
2016)



4560-38
Orange/Turquoise



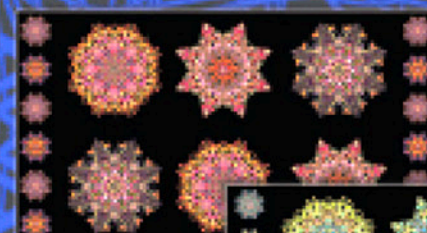
4560-45
Blue/Green



4560-62
Purple/Red

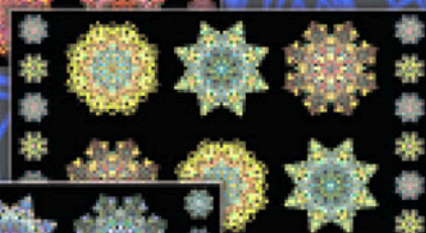
You can also go to these sites to see the types of fabrics you want:
<http://paulanadelstern.com/fabric-details.php?pat=51>
<http://paulanadelstern.com/fabric-details.php?pat=37>
<http://paulanadelstern.com/fabric-details.php?pat=33>
<http://paulanadelstern.com/fabric-details.php?pat=18>
<http://paulanadelstern.com/fabric-details.php?ID=7>

You might even find you already have some in your stash.

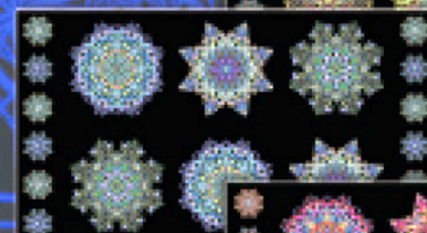


4306-28
Pink/Orange

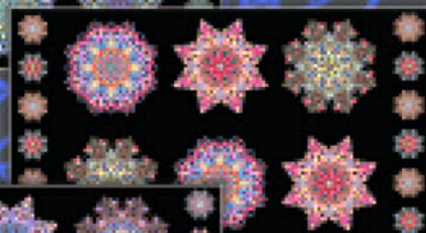
**The
Fabricadabra
Panels**



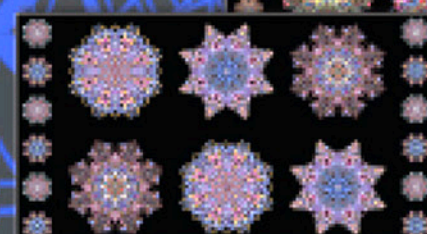
4306-44
Lime



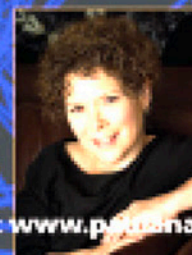
4306-50
Blue



4306-99
Multi



4306-66
Purple



Visit Paula at www.paulanadelstern.com

Benartex

Fabric for quilters. By quilters.

Benartex, LLC • 132 West 36th Street • 4th Floor • New York, NY 10018 • 212.840.3250 • www.benartex.com

Our August Hallockville Quilt Show a Success!

Carloads of ELIQG members and Hallockville Museum Farm visitors ventured out to the North Fork on August 20th & 21st to see the ELIQG show of 50 of our members' quilts. The guild sold bags jelly rolls, fat eighths, fat quarters, and yards of lovely fabric for bargain

basement prices! The guild also sold raffle tickets (*below, right*) for a queen size quilt, won by Chris Smith, and three additional prizes. As a National Register of Historic Places and Riverhead Town Landmark, the 28 acres with its 19 historic houses, barns and outbuildings are always a popular location.

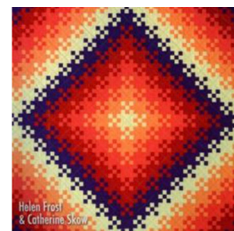


– Brigitte Mazzaferro & Karen Nicholson

September Sorrow

Longtime member Tippy Case's husband Gerard passed away on Sunday. Please send Tippy a card at 1870 Jacobs Lane, Southold, NY 11971. Your thoughts can be so meaningful during her time of loss.

Alice Summerville has been fighting pancreatic cancer and is receiving hospice care at home. Your cards and well wishes really brighten her day. Address cards to Alice at 106 Linda Ave, Riverhead 11901.



October President's Challenge Due on the 12th!

Have you started your President's Challenge yet? The parameters leave a lot of room for creativity and the rules are simple:

Pick a magazine from the President's Mystery Bag. Select a number from the President's Number Bag. Find the page number in the magazine. Find something on that page to inspire your quilt.

It could be from a picture on the page.

Or a part of a picture on the page.

A word or words on the page.

Certain colors.

Be creative and have fun!

The quilt can be any size or shape.

The President's Challenge is due October 12th.

Save your magazine to share at the October meeting. The label on back of quilt should have magazine used, your name and the name of your quilt. Your quilt should have a sleeve on the back. Prizes will be given at the October meeting!

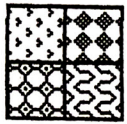


November Mystery Quilt Reveal!

Just joining? Check the website for recent **Fat Quarterlies** to catch up.

Take:

Baggie#1



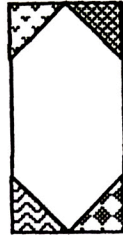
&

Baggie#2



&

Baggie#3



&

Baggie#4



&

Baggie#8

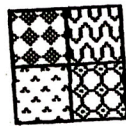


Baggie#2



&

Baggie#1



&

Baggie#2



=24 units



Baggie#4



&

Baggie#3

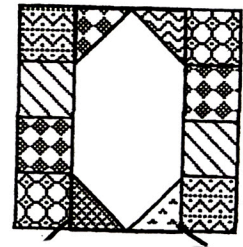


&

Baggie#4



=20 units



Baggie#8



&

Baggie#2

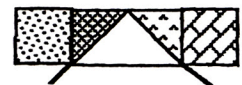


&

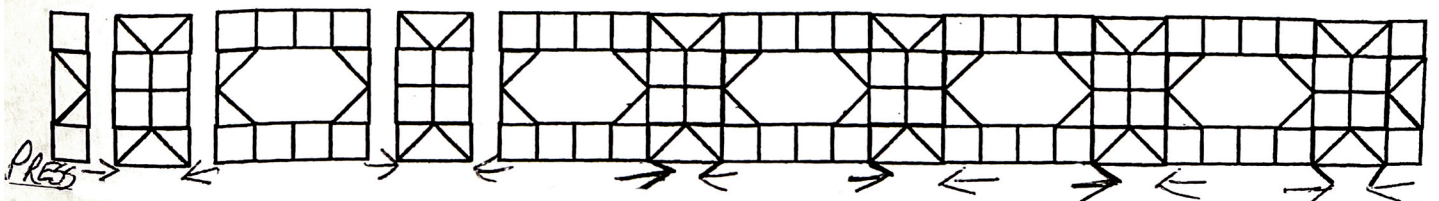
Baggie#8



=8 units

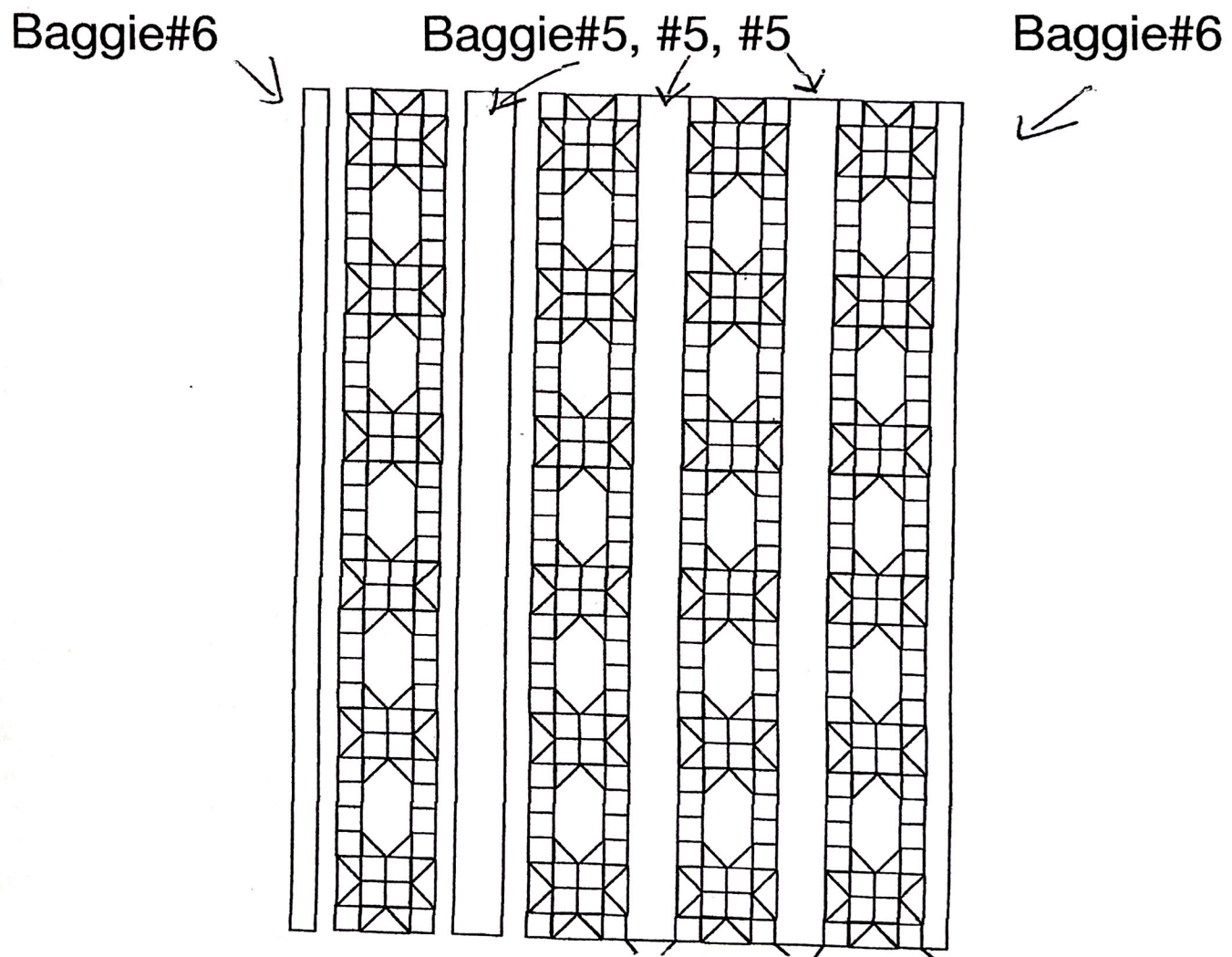


Make 4 columns:



Mystery Quilt Solutions #2

1. Take baggie #5. Measure length of columns (68 1/2") and cut 3 strips this measurement. Sew between columns. Press away from columns.
2. Take baggie #6. Measure length of columns (68 1/2") and cut 2 strips this measurement. Sew on both sides of top. Press away from columns.



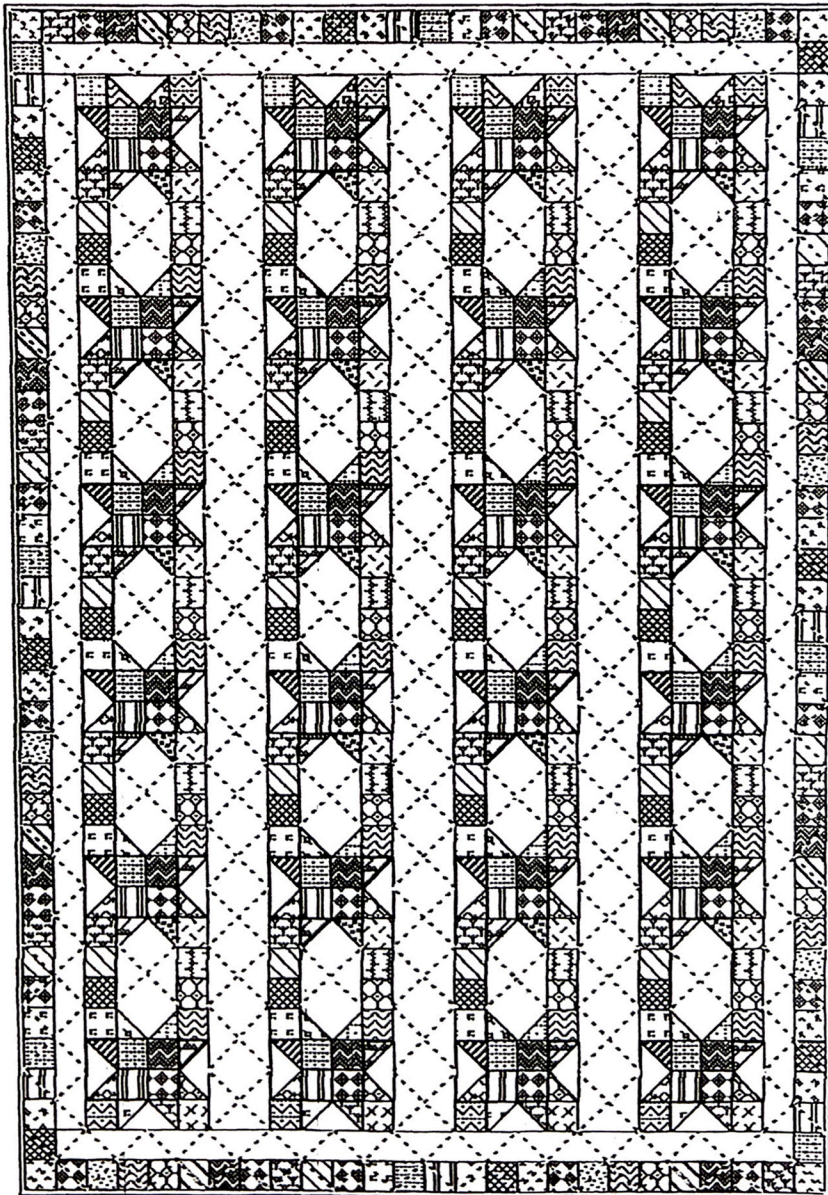
Take baggie #9. Measure width across top & bottom (48 1/2"). Cut 2 this measurement and stitch to top & bottom of top. Press toward top & bottom.

Mystery Quilt Solution #3

Take baggie #7. Stitch units into 2 columns of 36 squares and 2 columns of 26 squares. Sew to sides of quilt top first. Press away from units. Sew to top and bottom of top. Press away from units.

CONGRATULATIONS!

YOUR TWISTED CABLES TOP IS COMPLETE.



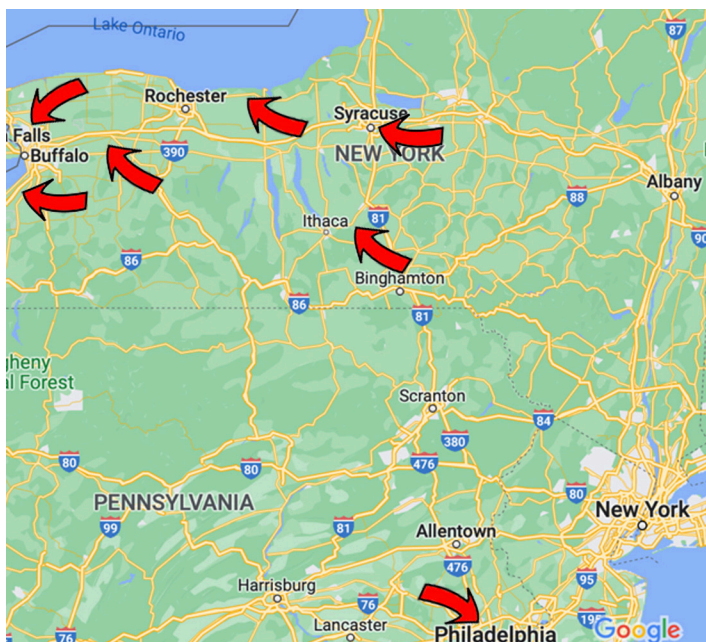
On Saturday November 5th, the doors of the Old Steeple Church open at 9:30 and our ELIQG meeting will start at 10 when the Mystery Quilt Reveal will occur!

Get busy ladies, for there will be *wonderful* prizes - you really won't want to miss this event!

Guild Scraps

This column is an opportunity for members to contribute a tip, a show in the tri-state area, a workshop you think would be great for our guild, or a quilt you recently made. Let's keep each other updated by sending an email to eliqgnews@gmail.com by the first of the month!

SHOWS:



Road trip! Combine a quilt show with a visit to Lancaster quilt shops, a "B'way" show in Buffalo or Rochester, or a comfortable stay at a quaint Finger Lakes B&B....

Until September 4 (open daily 11-4, Sundays 1-4, closed Wednesday): Water Mill Museum's 36th Annual Quilt Show & Sale – you are invited to show and sell your quilts; find registration form at watermillmuseum.org or contact Eileen, at ecnoonan@aol.com

September 15-18: PA National Quilt Extravaganza, 100 Station Ave, Oakes, PA
September 16-17, 9-4: Thumbstall Quilt Guild Show, 5083 Onondaga Road, Syracuse, NY

September 23-24, 10-4: Morningstar Quilt Guild Show, 5600 McKinley Parkway, Hamburg, NY

October 1-2, 10-5: Tompkins County Quilters Guild Show, 170 North Street, Dryden, NY

October 7-8, 9-4: Kenmore Quilters Show, 2368 Eggert Road, Tonawanda, NY

October 14-15, 10-5: Museum Quilt Guild Show, 10708 Alexander Rd, Alexander, NY

November 5, 9-3:30: Reverse Curves Guild Show, 4146 East Main St., Williamson, NY

LET'S CONSIDER:

...an Ice-Dying workshop to create fabulous fabric for quilting this winter....

–from Brigitte Mazzaferro

AN OPPORTUNITY:

Those members who participated in the workshop(s) *Calligraphy for Quilters* may want to attend the Huntington Quilters' October 4th meeting when Jo Anne will present a trunk show of *Family Tree Quilts*. The meeting location is 189 Burr Rd., East Northport at 7:30.

HELPING OTHERS:

CAST, the Center for Advocacy, Support and Transformation (*formally known as Community Action of Southold Town*) has been helping struggling community members meet basic needs of nutrition, clothing, energy, employment, and education since 1965. As part of the November fundraiser, CAST would like collect by Veteran's Day knitted hats and scarves donated by local crafters/artists to showcase & sell. I can talk more about it at the September meeting and collect the items at the fall meetings.

– Diane Peterson, dpeterson@castnorthfork.org