

CLIPBOARD

YOUR GUIDE TO LIVING IN ORANGE COUNTY

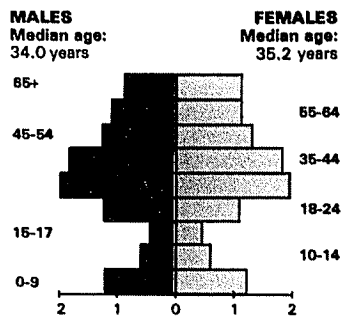
NEIGHBORHOOD PROFILE: WESTMINSTER/LITTLE SAIGON

Population

Population: (1988 est.) 21,325
 1980-88 change: +3%
 Median Age: 34.6

Racial/ethnic mix:
 White, 78%; Latino, 12%; Black, 1%;
 Other, 9%

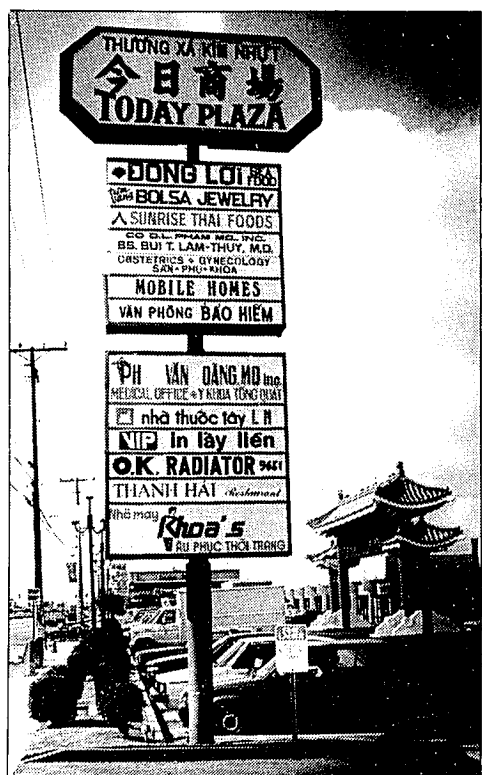
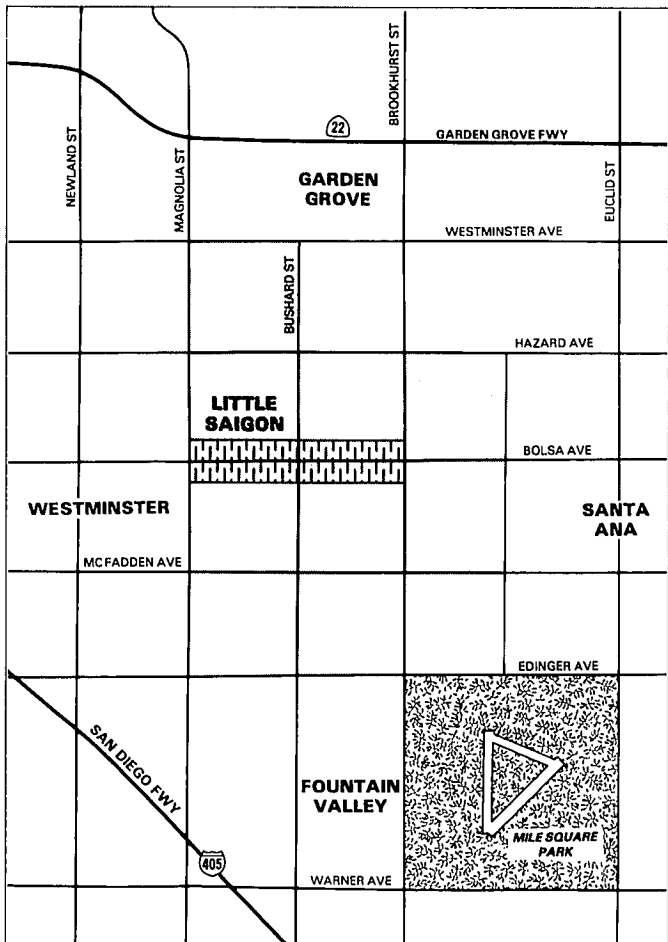
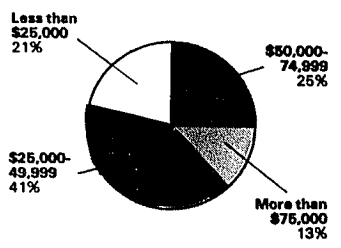
By sex and age:
 In thousands



Income

Per capita: \$15,683
 Median Household: \$43,527
 Average Household: \$43,630

Household Distribution:



CLIFF OTTO / Los Angeles Times

Vietnamese signs and ornate gates lined along Bolsa Avenue's Little Saigon show the area's Asian roots.

FOCUS

LITTLE SAIGON: CITY WITHIN A CITY

Bolsa Avenue, Little Saigon's "main drag," is deceptively ordinary. Rows of strip shopping centers face each other across the busy avenue. They house the usual bakeries, markets, fabric shops and dentists' offices. Take a closer look though, and you will soon see that this is no run-of-the-mill Main Street.

In 1975, when Tony Lam, his wife and six children fled the chaos of Saigon and arrived in Westminister, the area that would become Little Saigon was not much more than a series of vacant lots and dilapidated buildings. In the intervening years, Lam and his family have been a part of the area's astonishing growth, reaping benefits far beyond their workaday dreams.

The Lams own the Vien Dong Restaurant, located just outside the perimeter of Little Saigon, where specialties such as barbecue pork noodles have kept the place popular and created a tidy source of income for a large family. In addition to his

duties as restaurateur, Lam is the first vice president of the Vietnamese Chamber of Commerce, an organization that promotes Vietnamese industry in places such as Little Saigon. Efforts by the chamber and others have paid off over the years, putting Little Saigon, if not on the map, at least on freeway markers.

In a ceremony attended by Gov. George Deukmejian last summer, it was announced that signs would be installed on the San Diego and Garden Grove freeways marking the exit ramps for the Little Saigon area. Rarely is this honor accorded a community and usually only in areas designated as of special cultural interest.

Lured by the new signs, intrigued motorists may be struck not only by the concentration of more than 800 Vietnamese-owned businesses but also by a realization the community has not forsaken its Asian heritage for trendy Southern California glitz.

Pop into the Lien Hung Supermarket and you won't find a large selection of fat-free, boil-in-a-pouch dinners. What you will find, though, is a seafood section that probably dwarfs in size and variety any other purveyor of fresh fish you have ever seen.

Looking for mudfish, sheephead, milkfish or mullet? How about baby octopus or freshly severed catfish head for that midwinter chowder? Sure, chicken thighs and Bud Lite can be found here. But the impression is inescapable that the duck feet, pork tail, black chicken and soybean juice move a lot faster.

For those interested in sampling the cuisine and culture of Vietnam without leaving Orange County, the Tet Festival, an Asian celebration of the Lunar New Year, may be the perfect opportunity. Cultural ceremonies, food and entertainment will be offered Friday, Saturday and Sunday in Little Saigon.

WINGING AWAY FOR PRESIDENTS' DAY WEEKEND

Those of you who plan to fly away for Presidents' Day weekend would do well to shop for airlines and airports. The thrifty traveler can save, depending on the destination, airport and whether the flight carries any restrictions.

The following chart shows round trip air fares to Denver, Jackson Hole, Lake Tahoe, Salt Lake City and San Francisco from John Wayne, Los Angeles International, Long Beach, San Diego and Ontario airports. The fares are for departure on Saturday, Feb. 18, and returning Monday, Feb. 20.

Two quotes are listed for each destination. The first quote is unrestricted coach. The second quote is the lowest fare with various restrictions. See notes below.

DENVER					
Airline	Orange County	Los Angeles	Long Beach	San Diego	Ontario
America West	N/A	N/A	\$562	\$640	N/A
	N/A	\$278	278	N/A	\$278
Continental	\$640	\$640	N/A	\$640	\$640
	278	278	N/A	278	278
Delta	N/A	N/A	N/A	\$640	N/A
	N/A	N/A	N/A	278	N/A
United	N/A	\$640	\$660	\$640	\$640
	N/A	278	258	278	278

JACKSON HOLE, WYO.					
Airline	Orange County	Los Angeles	Long Beach	San Diego	Ontario
Delta	\$840	\$840	\$1,136	\$840	\$840
	258	258	382	358	258
US Air	N/A	N/A	\$1,136	N/A	N/A
	N/A	N/A	382	N/A	N/A

LAKE TAHOE					
Airline	Orange County	Los Angeles	Long Beach	San Diego	Ontario
American	\$318	\$258	\$346	\$334	\$258
	144	168	218	168	128

SALT LAKE CITY					
Airline	Orange County	Los Angeles	Long Beach	San Diego	Ontario
American West	\$640	N/A	\$640	\$610	N/A
	238	N/A	238	238	N/A
Delta	\$640	\$590	N/A	\$610	\$620
	238	238	N/A	238	238
United	N/A	\$590	\$640	N/A	N/A
	N/A	218	218	N/A	N/A

SAN FRANCISCO					
Airline	Orange County	Los Angeles	Long Beach	San Diego	Ontario
Alaska	N/A	N/A	\$296	N/A	N/A
	N/A	N/A	124	N/A	N/A
American	\$296	\$296	\$296	\$308	\$296
	124	124	124	114	124
Continental	N/A	N/A	N/A	N/A	N/A
	N/A	\$88	N/A	N/A	N/A
Delta	N/A	\$238	N/A	N/A	N/A
	N/A	N/A	N/A	N/A	N/A
United	\$296	N/A	\$296	N/A	N/A
	N/A	N/A	124	N/A	N/A
US Air	\$296	N/A	\$296	\$268	N/A
	124	N/A	124	68	N/A

N/A Route not available. Fares do not include the local fuel surcharge collected by some airports. Fares are provided for information only and are subject to availability and change daily. Some restrictions may apply. All fares subject to change and price quotes subject to availability at time of purchase.

Source: American Express Travel Agency and Official Airline Guide Electronic Edition

VIETNAMESE COMMUNITY

The most recent population information on Orange County's Vietnamese community, the 1980 Census, shows the Vietnamese concentrated in the cities of Santa Ana, Garden Grove and Westminister. They account for slightly more than 2% of the total population in those three cities and 1% of the total county population. Here is a city-by-city breakdown, listed in order of total Vietnamese population:

City	Vietnamese Population	% of Total Population	City	Vietnamese Population	% of Total Population
Santa Ana	4,622	2	Cypress	89	*
Garden Grove	2,711	2	La Habra	68	*
Westminister	2,007	3	San Clemente	60	*
Huntington Beach	1,785	1	Los Alamitos	44	*
Costa Mesa	1,403	2	San Juan Capistrano	33	*
Anaheim	1,291	1	Yorba Linda	32	*
Orange	855	1	La Palma	23	*
Fullerton	789	1	Brea	21	*
Stanton	517	2	Newport Beach	20	*
Fountain Valley	430	1	Laguna Beach	7	*
Irvine	417	1	Seal Beach	6	*
Buena Park	322	1	UNINCORPORATED AREAS †	1,285	*
Tustin	269	1	COUNTY TOTALS	19,333	1
Placentia	227	1			

* Less than 1%

† Figures include Dana Point, Mission Viejo, and Villa Park, which have become cities since the 1980 census was taken.

Source: The 1980 U.S. Census.

Because of an error in information provided to The Times, one of the entries in the 55-Alive Mature Driving class schedule (Clipboard, Jan. 26) was in error. The Feb. 9 and 10 and Feb. 20 and 21 classes will be given in Mission Viejo, not Laguna Niguel. The correct location is Casta del Sol (Recreation Room No. 1), 27651 Casta del Sol. The Feb. 9 and 10 classes will take place from 1 to 5 p.m. and the Feb. 20 and 21 classes from 9 a.m. to 1 p.m. The number for more information is (714) 837-6921.