

# May 2018 Spring Rhododendron Show and Banquet 5th

Another fabulous flower show with great food, fabulous flowers, new plants, and, most importantly, the camaraderie of your friends!

## Schedule

**3:00 - 4:45 p.m. \*Enter\*** Entries will be accepted from 3:30 p.m. through 4:45 p.m. Sorry, but if you come late, you will be able to display your flowers, but they will not be judged. Volunteers will help place your entry & Entry Form in the correct location.

**5:00 - 5:30 p.m. \*Vote\*** Each attendee may cast a ballot. All ballots must be turned in by the **5:30 deadline**. This will allow a reasonable amount of time to tally votes.

**5:30 - 6:00 p.m. \*Socialize\***

**6:00 - 7:00 p.m. \*Buffet Dinner\***

**7:00 - 7:30 p.m. \*Plant Auction\*** (Six awesome plants to compete for!)

**7:30 - 8:20 p.m. \*Awards' Program\* & \*Socializing\***

(We will be looking at the trusses that won and discussing what they are and what makes them the best of that group.) Show Experts explain what made these entries winners in their opinion.

**8:30 p.m. \*Raffle Drawing\* & \*Announcement of Silent Auction Winners\***

**9:00 p.m. Thank you for participating in our 2018 Show & Banquet**

**WIN!! Raffle Prize**

\$1 each or \$5 for six tickets

**WIN! Silent Auction—Bring money and prepare to bid!**

**May 5th** 1:00 p.m. Hendricks Park Tour offered by member Emily Aune  
*Rhododendrons, Park History and Trees*  
Hendricks Park Shelter  
2200 Summit Ave  
Eugene, OR 97403

## Banquet Menu

### Salad

- \* Green vegetable salad with no cheese

### Entree

- \* Roasted beef tenderloin with shallot and wine sauce
- \* Mediterranean chicken
- \* Parmesan Crusted Halibut

### Side Dishes

- \* Mashed potatoes
- \* Roasted Stir fry veggies with no cheese
- \* Rolls with both margarine and butter options

### Desserts

- \* Assorted cookies for dessert

### Drinks

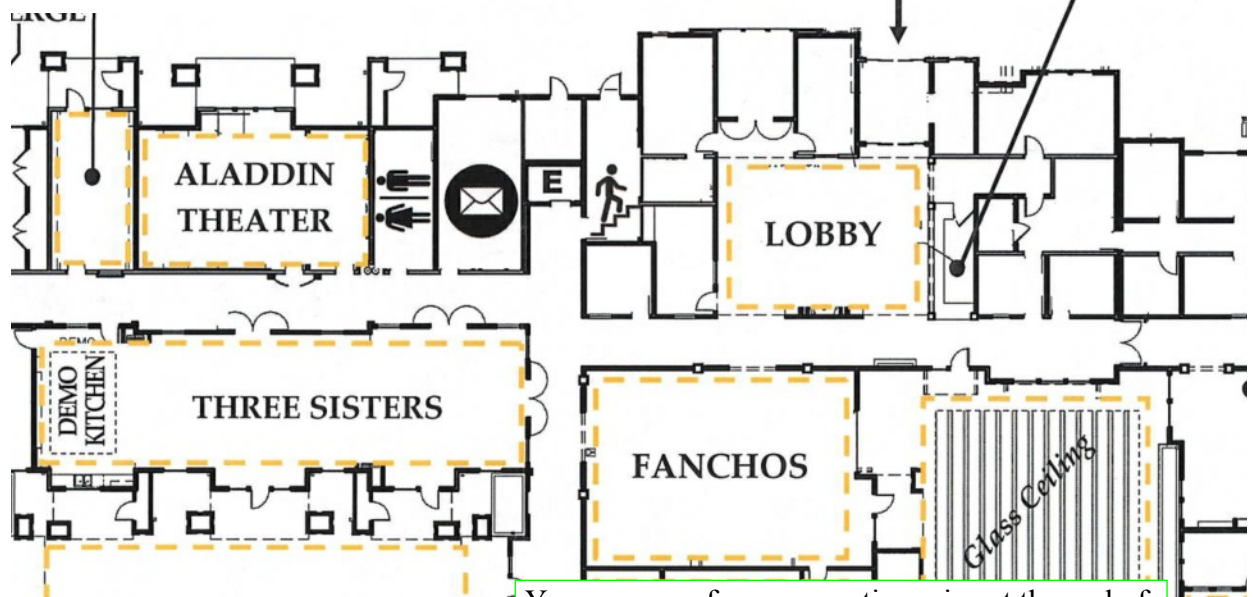
- \* Freshly brewed coffee, decaffeinated coffee, water and hot teas.
- Fanchos - a no-host bar will be available for beer, wine or mixed drinks. (See map below.)

Dinner is \$30 per person, including gratuity. We need an accurate seat count to give the restaurant, so please RSVP Harold by May 3rd.

The **Main Entrance** is under the portico. There is a cash register at the reception desk. **Please pay the Receptionist for dinner when you arrive.** You may use a credit card, cash or check to pay for your dinner. Make checks out to The Springs.



RECEPTION



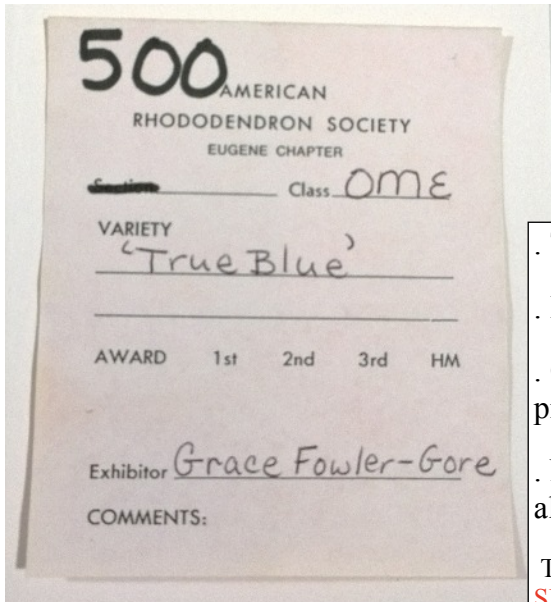
Show & Banquet located in Three Sisters  
 >>>>

Spirited auction for unusual beauties, a silent auction for unique gems, and a raffle for an extraordinary specimen.

You may pay for your auction wins at the end of the evening with cash or a check. Treasurer Nancy Burns will handle the finances. (Make checks payable to ARS Eugene Chapter; sorry, no credit cards).

## 2018 Spring Rhododendron Show and Banquet

Simplified Entry Forms –Entry Number Already Filled In.



1. Using CAPITALS, write Class of entry.
2. PRINT entry name.
3. Write your name.

- . Trusses and sprays should be properly groomed for top consideration.
- . Damaged or dead branches, leaves, and buds should be removed.
- . Cleaning and washing the leaves with water makes for a better presentation.
- . No artificial shining of the leaves or trimming of the leaves is allowed.

Taken from <http://www.siuslawars.org/resources/FlowerShows/2014-FLOWER-SHOW-RULES041014.pdf>

Sample Entry Form

### 10 Chances to win – nine classes & People’s Choice Any Class

- |   |  |
|---|--|
| <b>DA</b> - Deciduous Azaleas           | <b>OME</b> - Other-Colored or Multi-colored Elepidotes |
| <b>EA</b> - Evergreen Azaleas           | <b>L</b> - Lepidotes                                   |
| <b>PE</b> - Pink Elepidotes             | <b>SE</b> - Species Elepidote                          |
| <b>RE</b> - Red Elepidotes              | <b>SL</b> - Species Lepidotes                          |
| <b>WYE</b> - White or Yellow Elepidotes |  |

#### Awards

First, Second and Third Place in each class will be listed in the June Newsletter.

Hints for members judging trusses during our flower show - taken from <http://www.siuslawars.org/resources/FlowerShows/2014-FLOWER-SHOW-RULES041014.pdf>

1. **Flower Truss.** According to variety. Refers to the diameter of individual corollas, number of flowers per, and overall size of truss. The color should be true to the variety and a good representation of the group in which it is classified. 50 points
2. **Foliage.** All leaves should be well shaped, of good color and size and of good condition without mars or blemishes and not trimmed. 30 points
3. **Cleanliness and Presentation.** Entries should be clean and in an upright position if at all possible. 20 points

We are not assigning points, but we can use these qualities and weigh our judgements accordingly.

## News from Hendricks Park by Emily Aune

It has been a busy planting season for Hendricks Park. With enormous help from the volunteers who worked through the winter this year, we have gotten close to fifty new rhododendrons planted. We replaced plants that were lost from age, storm damage, disease, or plants that were just too heavily infested with Azalea lacebug.

The plants I am most excited to get in the ground are from two cuttings we propagated here at the park. In 2012, a snowstorm dropped an oak branch that completely smashed our *Rhododendron augustinii* 'Barto Blue'. I knew any plant with the Barto name was special. James Barto was one of the first rhododendron growers and hybridizers in the Pacific Northwest. After his death, his family donated many plants from his property in Junction City, which helped to fill the first bed ever planted in Hendricks Park. I am pleased that five years after losing the original plant, we have now replanted two of its progeny back into Barto's Bed! They have yet to flower, but when they do, their clear blue flowers will illuminate the hillside once again.

In addition, the Friends of Hendricks Park purchased many plants from Log Cabin Nursery. My favorites include the pink flowering 'Chemainus' with tan indumentum and dark green leaves, and the dwarf Warren Berg hybrid 'Patty Bee' displaying its trumpet shaped yellow flowers. We added to our species collection with *Rhododendron wiltonii* and *Rhododendron spinuliferum* with its unusual cylindrical firecracker-like orange red flowers. We also planted a 'Crater Lake' in the main garden, where there was only a sign without a plant. We are helping our history live on by replacing this Carl Phetteplace hybrid, a cross between 'Barto Blue' and 'Bluebird'. We planted almost all of Jack Olson's donations including this white flowering beauty 'Noyo Maiden' pictured below.

We went a little Rhododendron crazy this year, so we balanced it out with ten trees. Several Oregon White Oaks, a sweet-smelling *Styrex obassia* and a Japanese Maple 'Hogyoko' that will add a nice orange glow to the fall landscape.

Next time you find yourself ready for a walk outside, make your way up to Hendricks Park and see if you can spot any of the new plantings.



R. 'Noyo Maiden'



R. 'Patty Bee'



R. *augustinii* 'Barto Blue'

Photos by Emily Aune



Siuslaw Flower Show and Sale  
April 14<sup>th</sup>, 2018



**Siuslaw's Big Show is May 19 & 20**



*R. niveum* - Jack Olson

Above Emily, holding 'Loderi King George', & Brad with new rhododendrons for their garden at home.



*R. 'Candy Korn'* - Jack Olson

Photos by Grace Fowler-Gore  
Page 5-7

Message from the President:

Summer is slow in coming but rest assured it will arrive. As I get older I like working in the rain less and less, come to think of it, I like working less and less.

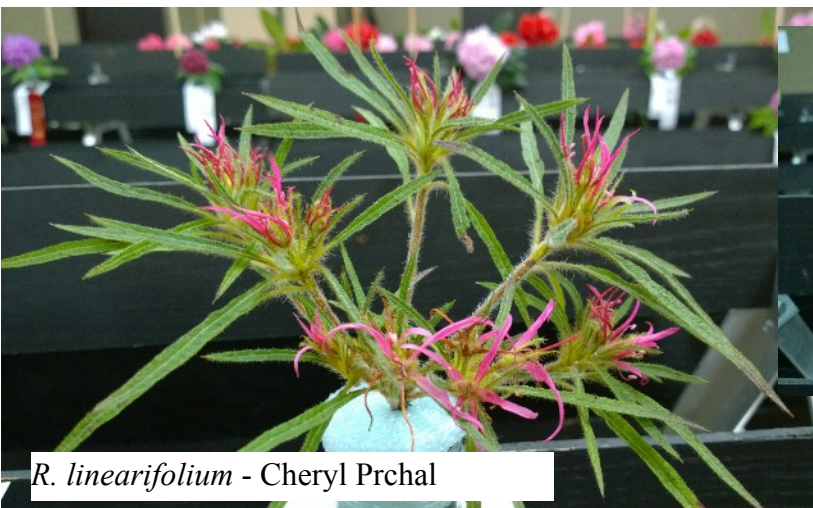
As most of you know working with plants is very therapeutic. There is something rewarding about keeping them alive and then enjoying what they provide, from eating to smoking to just enjoying the flowers.

I feel very fortunate that I somehow landed in a job that is so rewarding. As the saying goes, “find a job you like and you never have to work a day of your life”. When asked when I’m going to retire I tell them I’ve been retired for 20 years, I’m doing what I want to do.

We are now transplanting the cuttings we took this fall so that means I’m committed to at least 3 more years. The nursery has provided me with a lot of very enjoyable personal contacts. I enjoy the company of other plant people. They seem to have a more positive view of life. If it weren’t for all the contacts from the ARS and retailers, my social life would suck.

Many of you have been to the nursery and you are always welcome. Come visit and give me an excuse not to work.

Terry Henderson jentersruger@aol.com



*R. linearifolium* - Cheryl Prchal



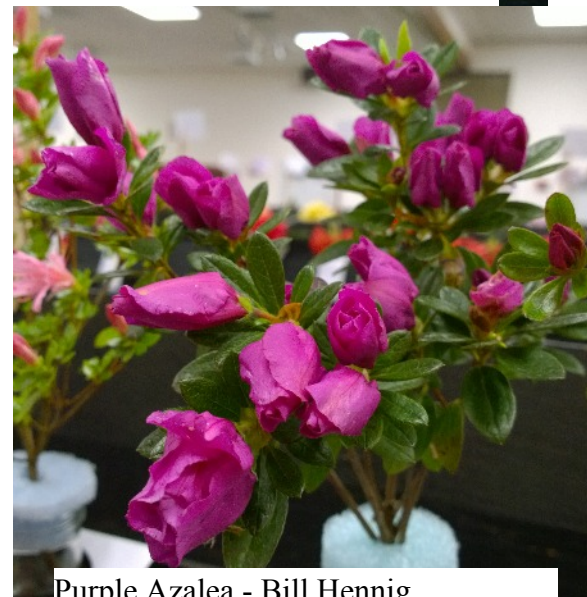
*R. x 'Obtusum'* - Gene Cockeram



*R. 'Star Trek'* - Jack Olson

Ed & I thoroughly enjoyed leisurely walking around and admiring all the wonderful diversity of rhododendrons. These are only a few of the wonderful entries we had the pleasure of seeing.

**We are looking forward to our May 5<sup>th</sup> show!!!**



Purple Azalea - Bill Hennig

### Hinsdale Garden Visit April 14<sup>th</sup>, 2018



R. 'Loderi Fairyland'

Hinsdale Garden Friend, Steve Samuels, wants everyone to know that Saturday, April 28<sup>th</sup> & May 12<sup>th</sup>, from 10 a.m. to 2 p.m. the garden will be open to the public with a shuttle bus running from the Elk Viewing Area Kiosk.  
[www.hinsdalegarden.com](http://www.hinsdalegarden.com)



Webmaster Ed Gore beside an arboreum hybrid.  
Close up of one of the trusses above.



Photos by Grace Fowler-Gore

Look closely and you can see Emily and Brad standing in the middle of this photo. Steve Samuels said that the garden will be mowed and cleaned up for the official openings. April 14<sup>th</sup> was a “soft” opening for locals.

American Rhododendron Society  
Eugene Chapter  
PO Box 7704  
Springfield, OR 97475

## Event Calendar 2017 – 2018

- May 3**    **RSVP for Banquet Dinner**  
to Harold Greer (541) 554-2342 hgreer@greergardens.com
- May 5**    **1 p.m. Hendricks Park Tour**  
Meet @ Hendricks Park Shelter, 2200 Summit Ave, Eugene OR 97403
- May 5**    **3 p.m. Flower Show and Banquet @**  
The Springs at Greer Gardens, 1282 Goodpasture Island Rd, Eugene, OR
- May 12    Willamette Valley Hardy Plant Sale @ Eugene Fairgrounds
- May 12    Hinsdale Garden Open from 10 a.m. to 2 p.m.
- May 19&20 Siuslaw Flower Show and & Sale
- June 3    Spring Picnic at Hendricks Park  
@ Hendricks Park Shelter, 2200 Summit Ave, Eugene OR 97403