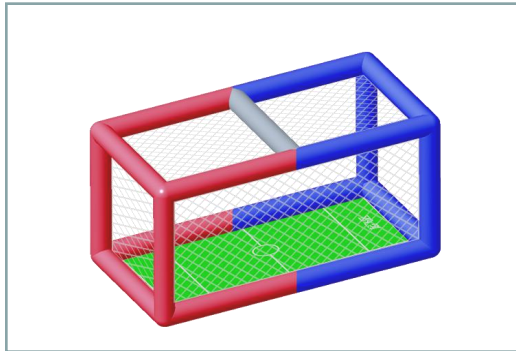


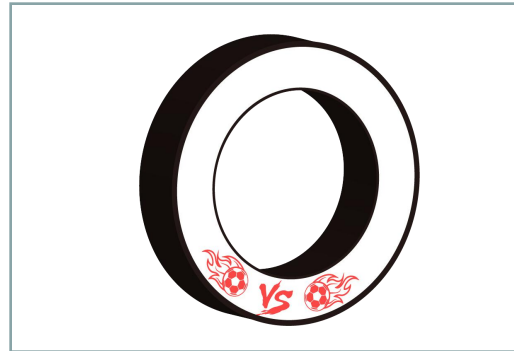


LDARC

Solution:



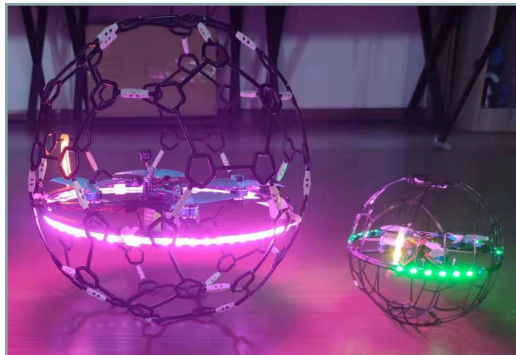
Matching field



Matching gate



Scoring system



Matching equipment



Tutorial



After sales

FB200 Brief introduction

FB200 is a soccer drone developed by Dongguan LDA UAV Technology Co., Ltd., which conforms to the FAI F9A-B rules technical parameters, FB200 soccer drone can conduct air confrontation and combat competition, it has altitude holding function, full surrounded design, a variety of lighting effects and color mode, can achieve one-key switch, suitable for FPV entry experience training, visual flight training; light show performance.

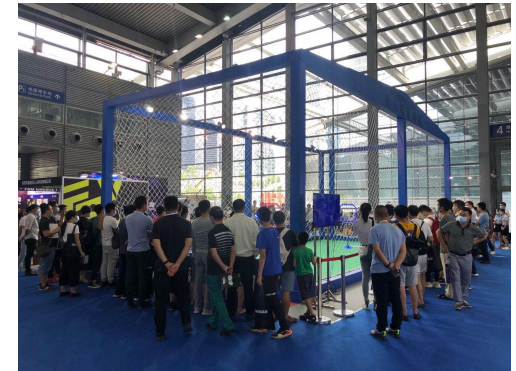
Background:

In May 2019, soccer drone was included in the FAI program and held its first international competition in South Korea in November before it quickly spread to Japan, the Netherlands and China.



Domestic Background:

In November 2019, the Chinese Aviation Association held the fourth national organization In the youth UAV competition, the "Soccer drone competition" program was added. Soccer drone is booming in China and is seen in China In various large-scale events, the National Youth UAV Competition, the National Aviation Space Model Championship, the National Youth UAV Innovation Education Competition.



Version

- 01 Racer ver.
- 02 FPV ver.
- 03 RTF Racer ver.
- 04 RTF FPV ver.



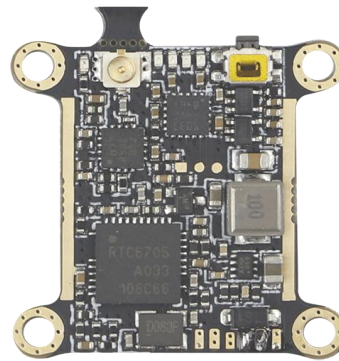
Racer ver.

Battery, radio or receiver need to be bought by separately



FPV ver.

Battery, radio or receiver need to be bought by separately



MINI ROCKET
350mW 32CH



Nano2

Nano2, MINI ROCKET had installation

RTF Racer ver.



EX8



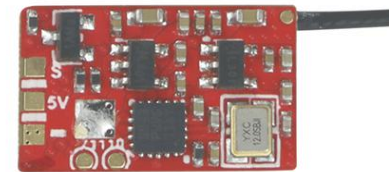
A400 charger



FB2 handbag



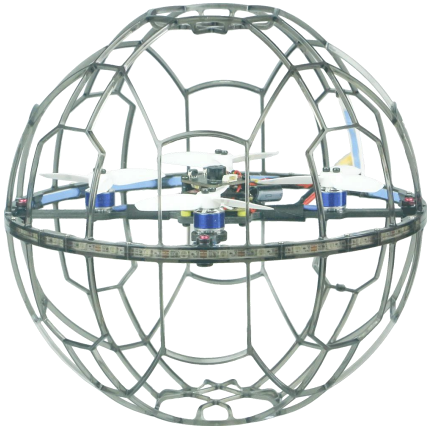
11.4V 1150mAh 20C



AC900

AC900 receiver had installation

RTF FPV ver.



EX8



A400 charger



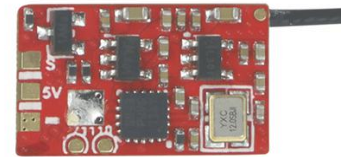
Nano2



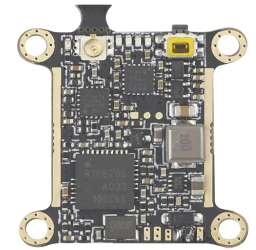
FB2 handbag



11.4V 1150mAh 20C



AC900



MINI ROCKET
350mW 32CH

AC900 receiver, Nano2, MINI ROCKET had installation

Parameter:

Wheelbase: 110mm

Outer diameter: 200mm

Input voltage: 3S

Racer ver.-188g, FPV ver.-200g, RTF Racer ver.-188g, RTF FPV ver.-200g

Remark: Weight is take-off weight, equipped battery is 11.4V-1150mAh-20C

Configuration:

FC+ESC: MR26-AIO-F411E35A

Motor: XT1105L-4250KV

Propeller: 2840-3 blades

Light controller+LED: 2CH-RGB-SYSTEM; 38 LED lights, color and special effects are adjustable

Racer ver. and FPV ver. can choose RX with:RX2A, AC900

FPV ver.: Racer ver.+MINI ROCKET VTX+Nano2 CAM

RTF ver.: Racer ver.+EX8 TX+11.4V 1150mAh 20C battery+AC900 RX+FB2 handbag+A400 charger

RTF FPV ver.: Racer ver.+EX8 TX+11.4V 1150mAh 20C battery+AC900 RX+FB2handbag+A400 charger+MINI ROCKET VTX+Nano2 CAM

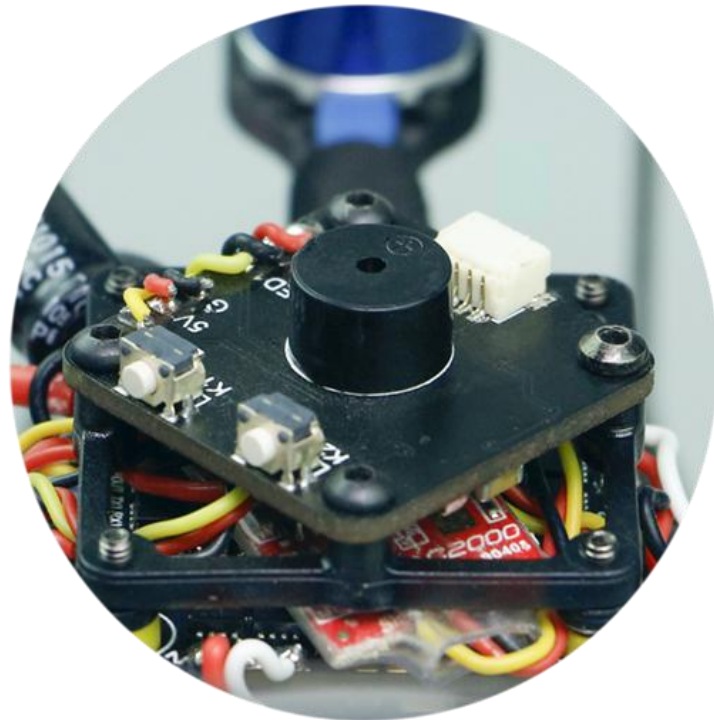
Warning: Input voltage is 3S, over-voltage is prohibited, battery weight <70g, over-voltage or over-weight will damage the electronics equipments

Characteristics:

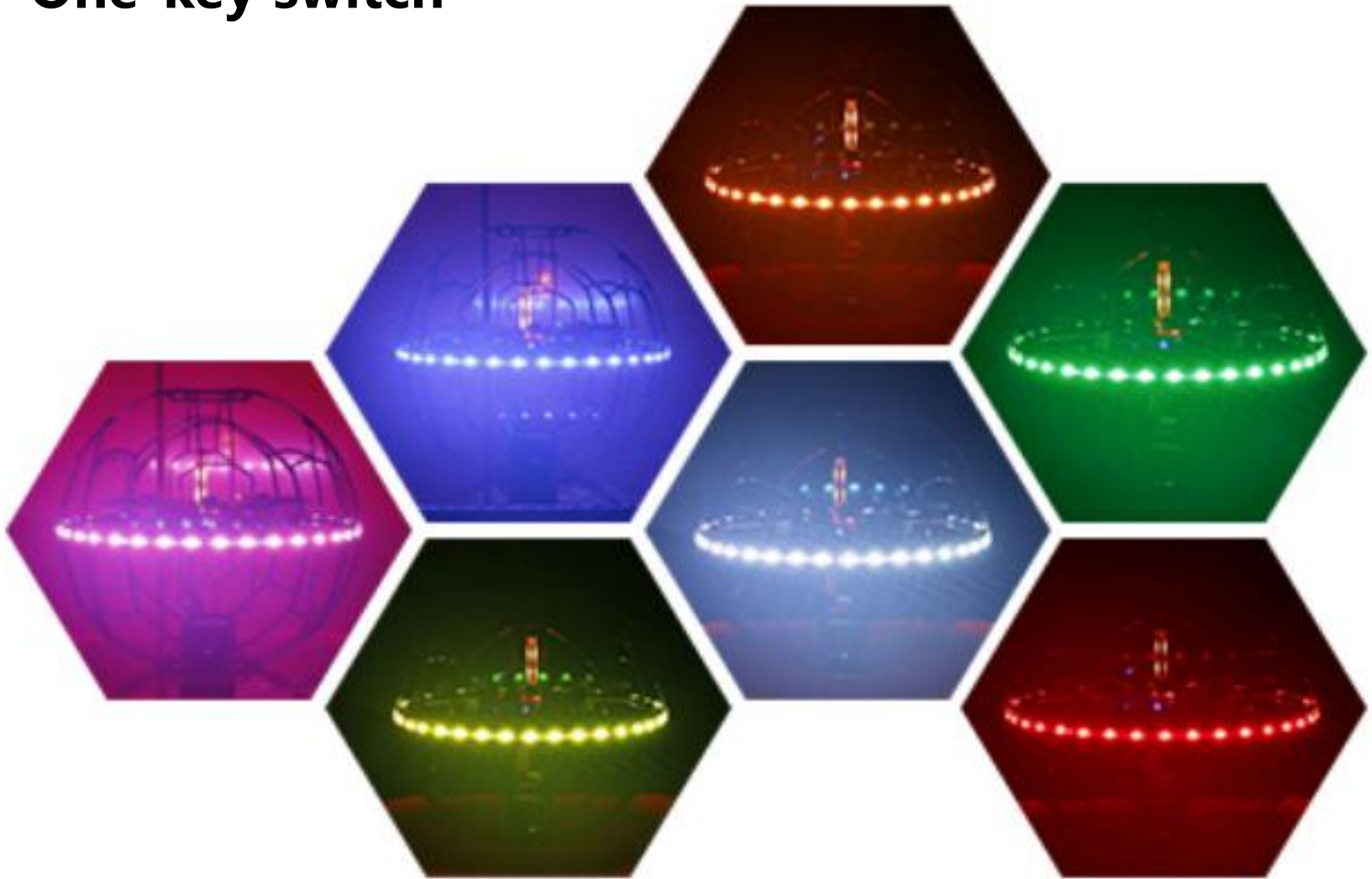
1. Hemispherical injection molding outer frame with simple structure
2. T700 material, 3mm thick integrated carbon fiber
3. 8 LED colors and multiple special effects modes
4. Switch between colors and special effects with one click
5. Optimize the structure, reduce the noise and improve the efficiency
6. Altitude holding, Self-stable flight mode
7. FAI 9A-B rules technical parameters
8. High efficient power combination, flight time 10 minutes
9. Open source FC, feel and parameters are adjustable
10. High current resistance 35A ESC

LED controlling system:

1. Circle light (white, green, yellow, orange, red, blue, pink, cyan, extinguished)
2. Rear light (white, green, yellow, orange, red, blue, pink, cyan, extinguished)
3. Circle and rear light effects mode:
 - 3.1 Normally on
 - 3.2 Breathing
 - 3.3 Flow
 - 3.4 Flash fast
 - 3.5 Interval blinks
 - 3.6 Blink at alternate intervals
4. Rear light effects mode:
 - 4.1 Normally on
 - 4.2 Breathing
 - 4.3 Flow
 - 4.4 Flash fast



One-key switch

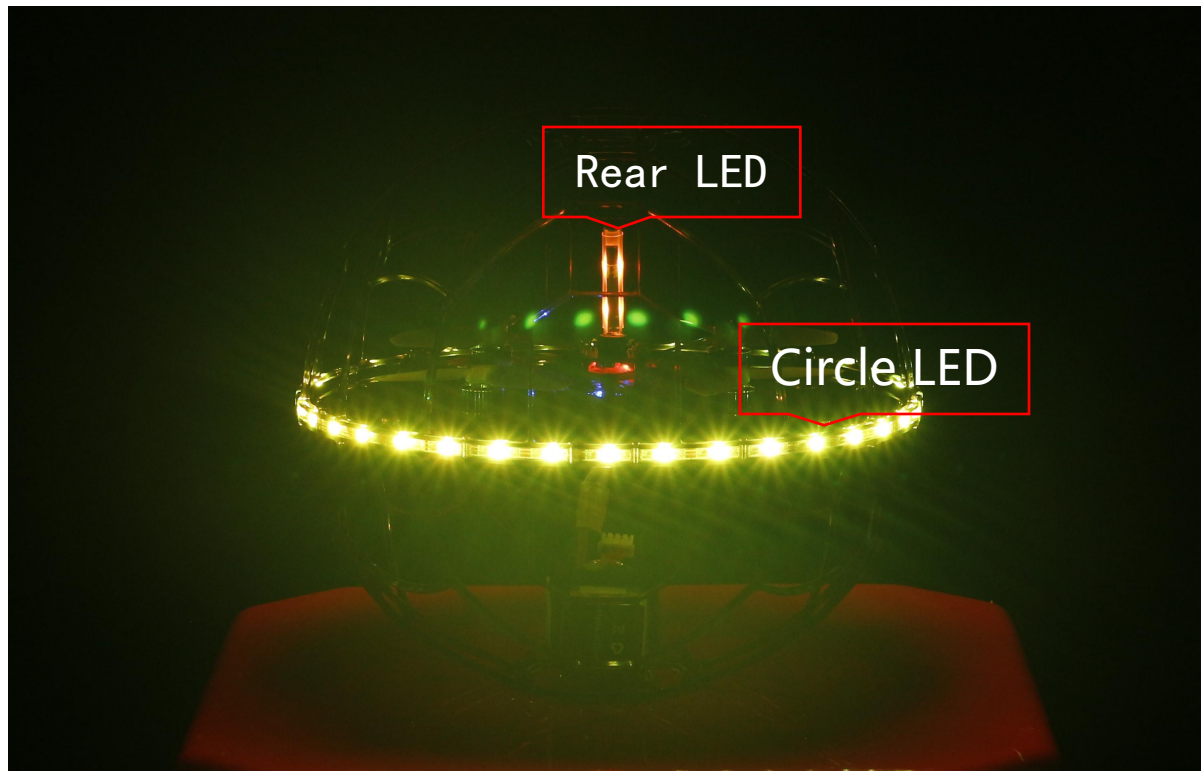


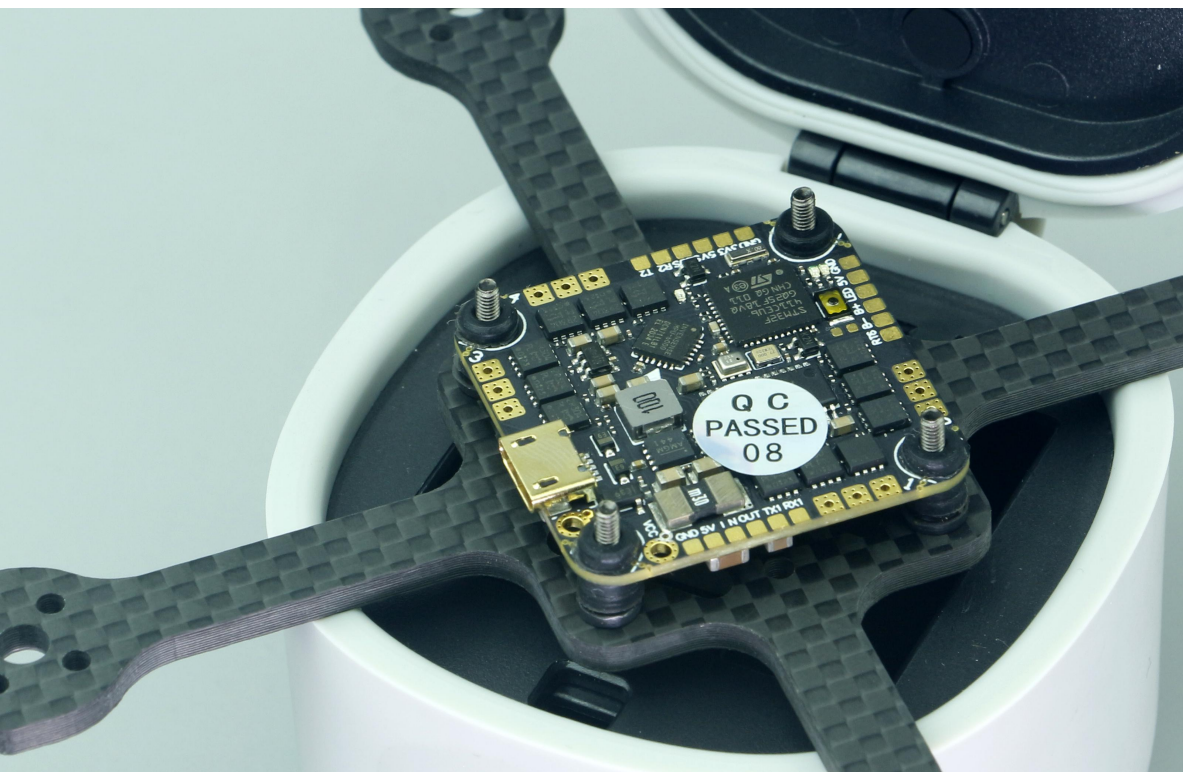
Circle LED:

Team identification

Rear LED:

Member identification






FC+ ESC

F411 open source flight controller +4IN1 high current resistance 35A electrical adjustment, hand feel and parameters can be adjusted, the factory has adjusted the parameters, if you need advanced functions, you can go to the INAV software to adjust.


Default parameter setting software



CONFIGURATOR 3.0.0
FC FIRMWARE Not connected

2021-07-19 @ 09:41:02 — New version available!

DFU Wireless mode

Connect 


Show Log

Welcome


Documentation & Support


Mission Control


Firmware Flasher



Welcome to **INAV - Configurator**, a utility designed to simplify updating, configuring and tuning of your flight controller.

 Telegram Channel

 Facebook Group

 RC Groups Support

Hardware
The application supports all hardware that can run INAV ([Matek F405-WING](#), [Matek F722-SE](#) and many other). The full list of recommended hardware is available [here](#).





The firmware source code can be downloaded from [here](#)
The newest binary firmware image is available [here](#).

Latest **STM USB VCP Drivers** can be downloaded from [here](#)
Latest **Zadig** for Windows DFU flashing can be downloaded from [here](#)

Contributing
If you would like to help make INAV even better you can help in many ways, including:

- Answering other users questions on the forums and IRC.
- Contributing code to the firmware and configurator - new features, fixes, improvements
- Testing **new features/fixes** and providing feedback.
- Helping out with **issues and commenting on feature requests**.

SPONSORS

MATEKSYS AIRBOT CarbonBird™ Robotics ADPM drones
Lightweight efficiency

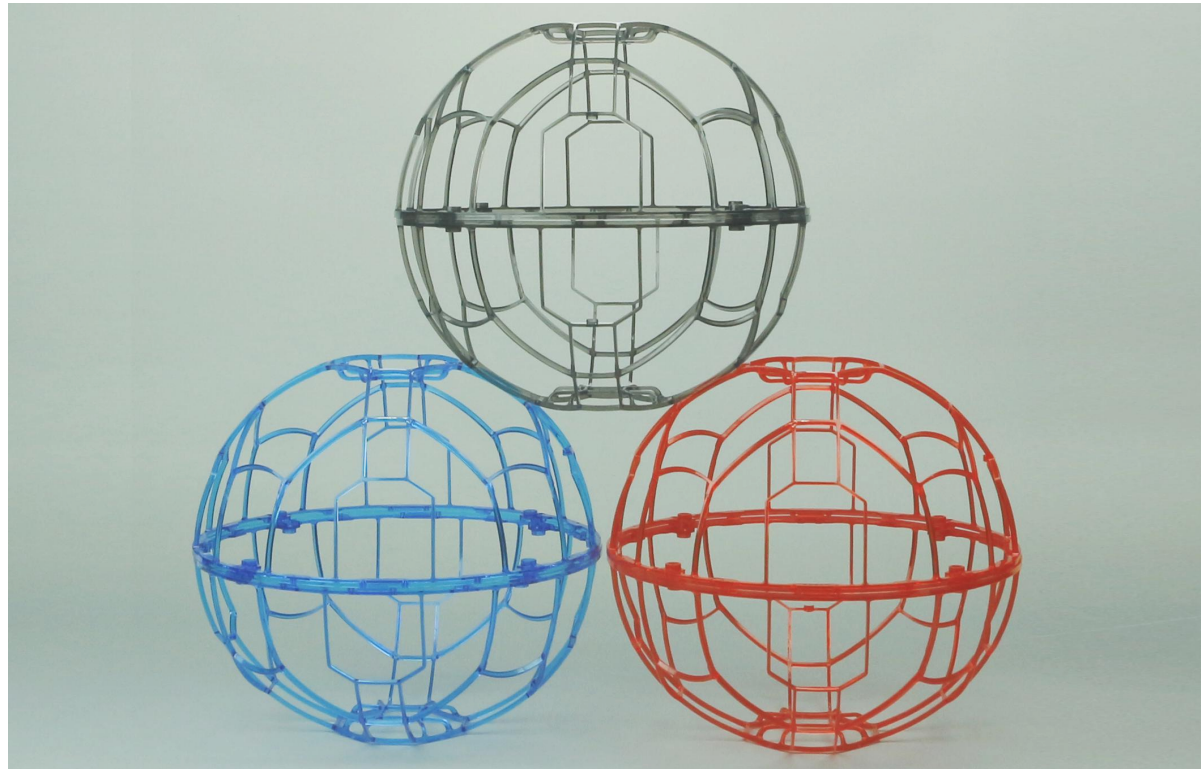
截图(Alt + A)

Packet error: 0 | I2C error: 0 | Cycle Time: 0

3.0.0

Material properties

1. The material is polycarbonate PC
2. Impact resistant, tough and fall resistant
3. Transparent black is the default color
4. Transparent red and transparent blue can be customized



Batteries can be selected according to competition requirements



11.4V 1150mAh 20C

Flight time 8-10 minutes



11.1V 600mAh 50C

Flight time 4-5 minutes

Altitude holding, Self-stable flight mode





FB2 handbag
Easy to carry

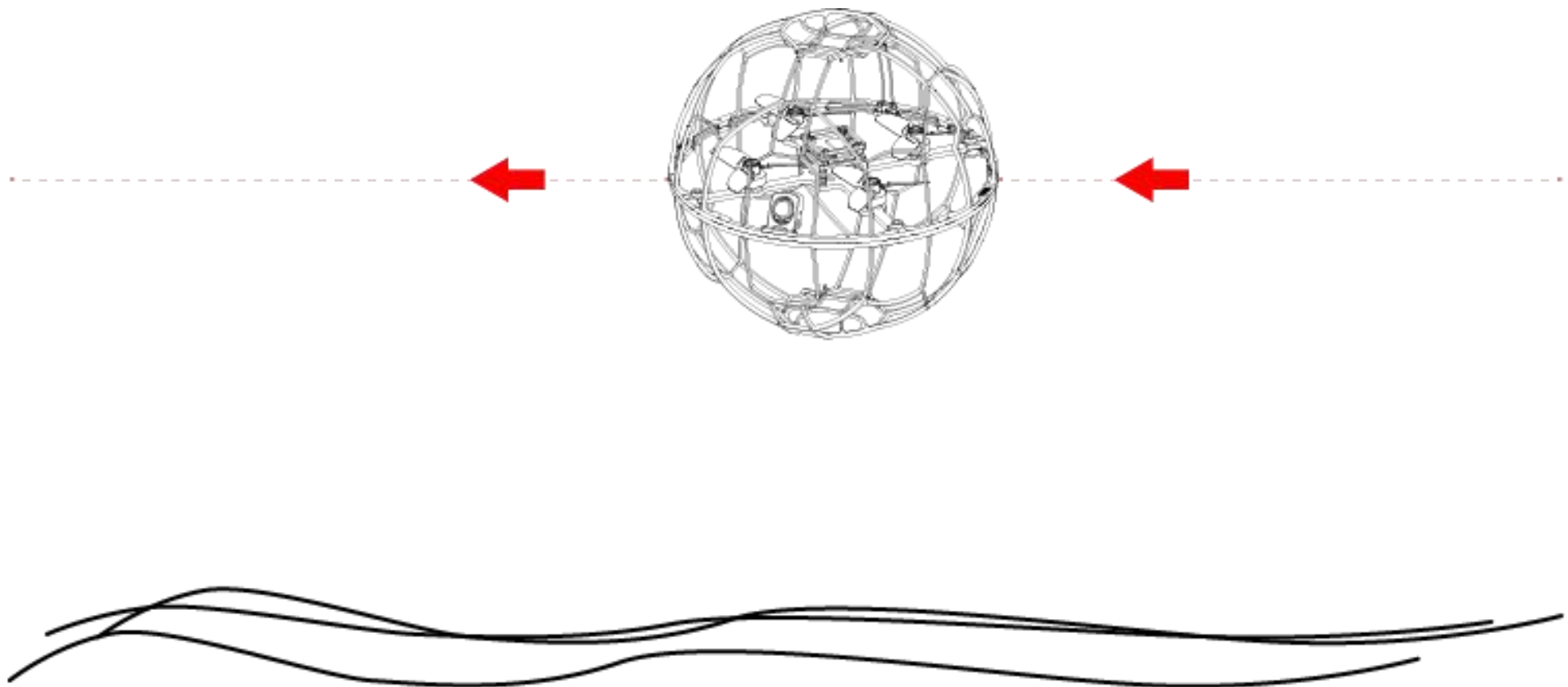
**Red mark
printing acceptable**



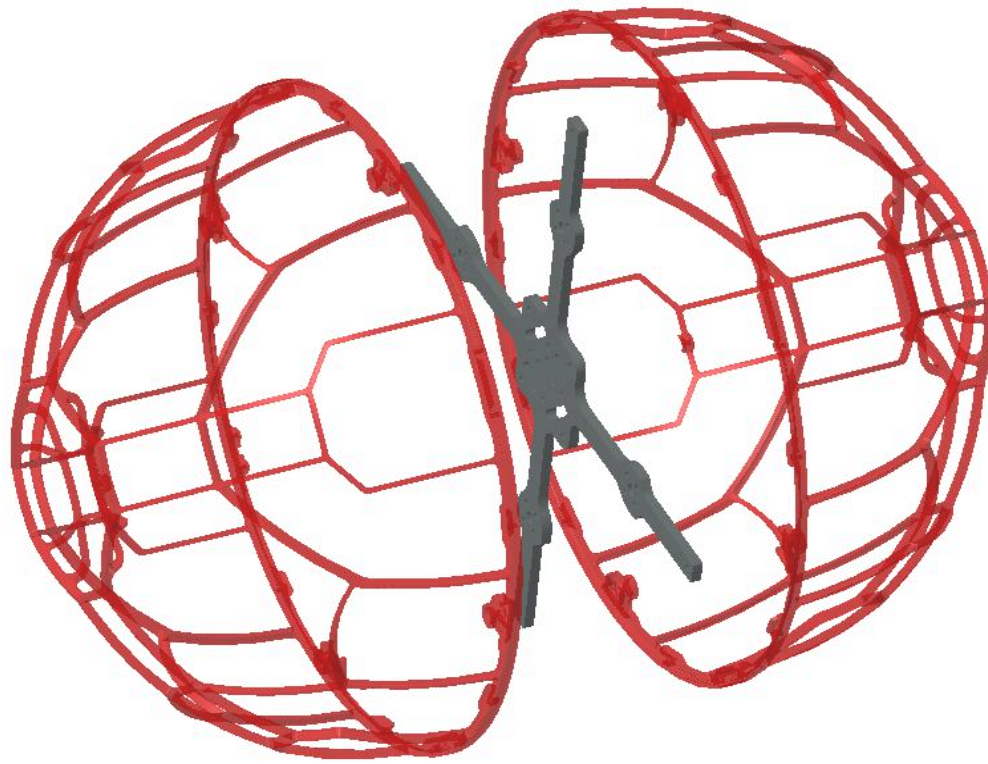
Competition



Altitude holding flight



Frame + Carbon plate: Half sphere molded frame, T700 material and 3mm thick integrated carbon plate



FB200 飞行足球说明书



本司将不对此物品异动负责,也无法主动通知消费者任何更新或异动,本说明内记载的材质,规格或零件包装之内容物品如有异动,请以 LDARC 官网为主.此产品适合 14 岁及以上的人.

快速入门

包装明细:

- 竞技版:PNP*1
- FPV 版:PNP(含图传和摄像头)*1
- RTF 竞技版:PNP*1+EX8*1+电池*1+AC900 接收机*1+手提包*1+A400 充电器*1
- RTF FPV 版:PNP(含图传和摄像头)*1+EX8*1+电池*1+AC900 接收机*1+手提包*1+A400 充电器*1

版本确定:

- 竞技版:目视飞行,自备充电器,电池,遥控器,NORX 需自备接收机.
- FPV 版:第一视角飞行,自备充电器,电池,遥控器,显示屏,NORX 需自备接收机.
- RTF 竞技版:到手飞竞技套装,使用前先将电池充满电.
- RTFFPV 版:到手飞 FPV 套装,可以实现第一视角飞行,需要自备显示屏,使用前先将电池充满电.

竞技版和 FPV 版:

- NO RX:需先焊接收机;然后在 INVA 中对接收机进行设置,并且检查遥控器中立位和开关通道.
- RX2A:出厂已默认设置好,只需检查遥控器中立位和开关通道.
- AC900:出厂已默认设置好,只需检查遥控器中立位和开关通道.

RTF:到手飞竞技套装,使用前先将电池充满电,然后解锁飞行.

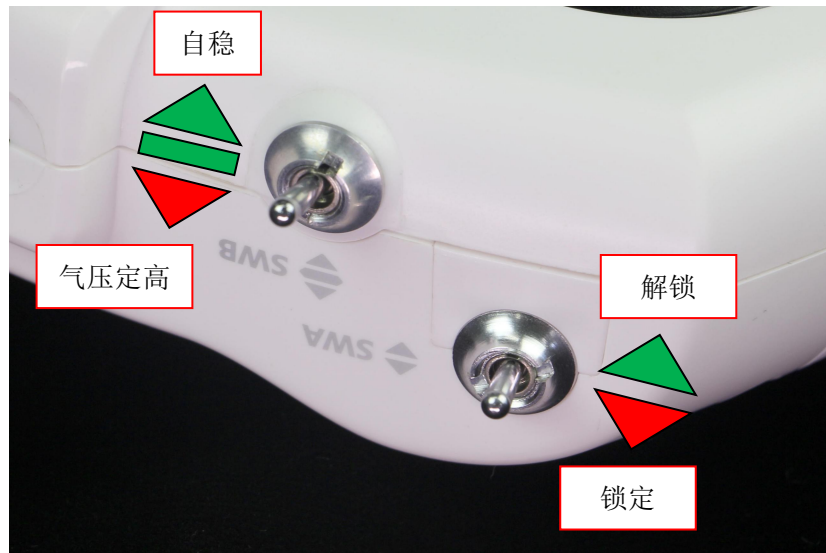
LED 灯控系统:短按切换圈灯和尾灯颜色,长按 3 秒可以切换圈灯和尾灯特效.检查电机和螺旋桨的旋转方向.

备注:

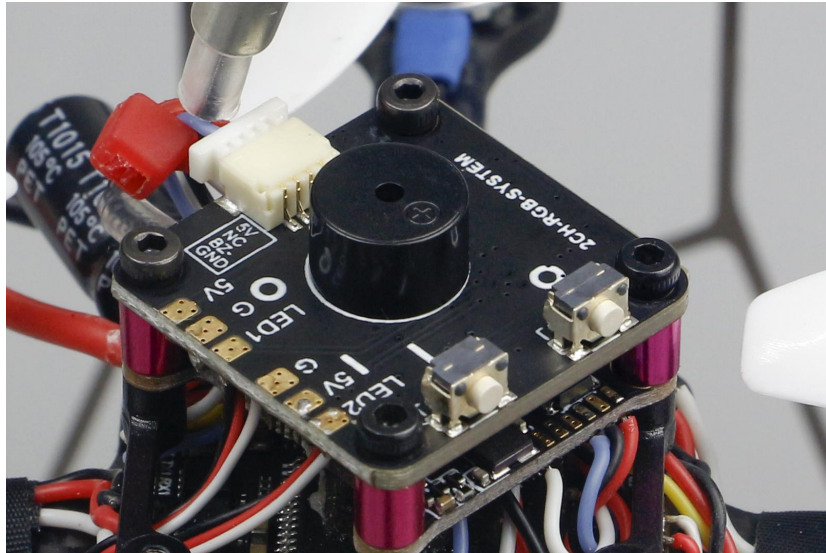
- AC900 接收机有 S-FHSS 和 D16 两种协议模式,根据遥控器制式切换至可用协议模式,接收机上电,LED 第一次闪烁为红灯表示 S-FHSS,LED 第一次闪烁为绿灯表示 D16; 切换方法,接收机上电后红色或绿色指示灯常亮,按住接收机上按钮不放指示灯将熄灭,持续 3 秒后指示灯点亮,此时松开按钮将切换到另外一种接收模式,然后接收机自动重启.
- RX2A 采用 AFHDS2A 协议的遥控器(富斯 FS-I6,X6 等).
- AC900 支持 FUTABAS-FHSS 和 FRSKYD16.

遥控器:

拨动 SWA 开关解锁/锁定,解锁,可以飞行; 锁定,禁止飞行; 拨动 SWB 开关开启或关闭气压定高.

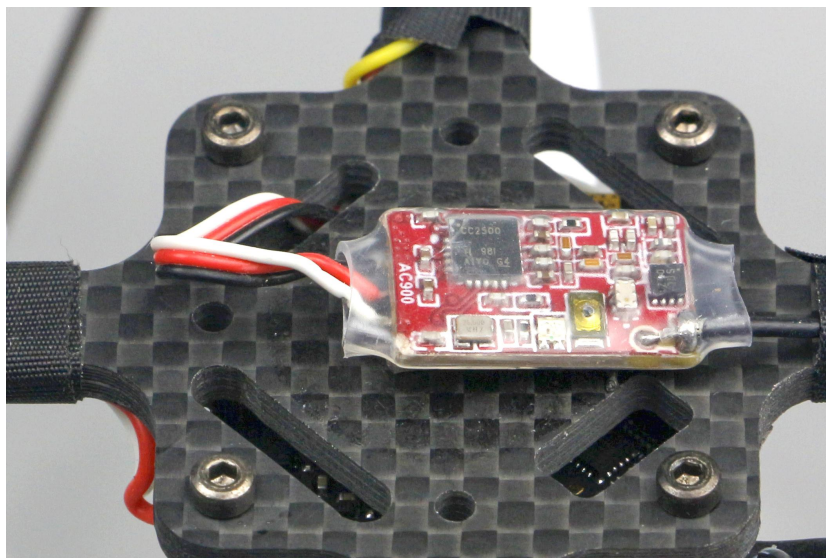
**LED 灯控系统:**

- 圈灯单击 K1 按钮切换颜色(白,绿,黄,橙,红,蓝,粉,青,熄灭)
- 圈灯长按 K1 按钮 3 秒切换特效:①常亮,②呼吸,③流水,④快速闪烁,⑤间隔闪烁,⑥交替间隔闪烁
- 尾灯单击 K2 按钮切换颜色(白,绿,黄,橙,红,蓝,粉,青,熄灭)
- 尾灯长按 K2 按钮 3 秒切换特效:①常亮,②呼吸,③流水,④快速闪烁
- 符号“O”表示圈灯 LED1,符号“l”表示尾灯 LED2.



接收机:

自备接收机需要动手焊接,白色为 S.BUS 信号线,红色为 5V,黑色为 GND;并在 INAV 中正确设置.



接收器模式

串接式接收器 (SPEKSAT, SBUS, SUMD)

串接接收器厂牌

注意: 使用 RX_SERIAL 功能时记得配置串接口(透过端口页签)并且选择厂牌

SBUS

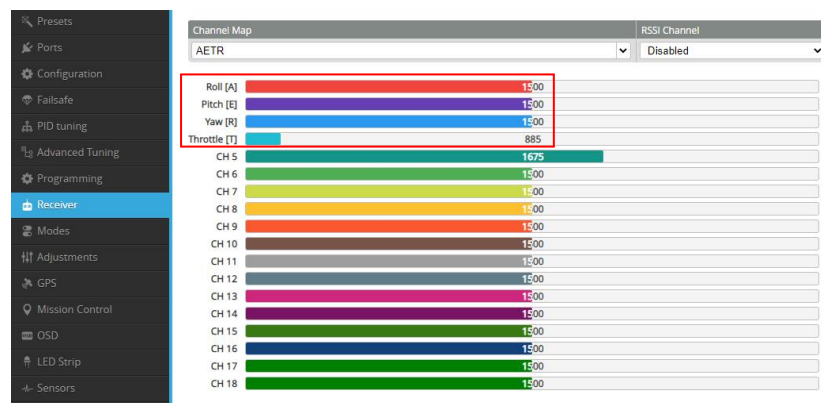
传输设备	传输协议	传输速率	传输模式	传输设备	传输速率	传输模式
USB VCP	<input checked="" type="checkbox"/> MSP 115200	类型	AUTO	<input type="checkbox"/> Serial RX	类型	115200
UART1	<input type="checkbox"/> MSP 115200	类型	AUTO	<input type="checkbox"/> Serial RX	类型	115200
UART2	<input type="checkbox"/> MSP 115200	类型	AUTO	<input checked="" type="checkbox"/> Serial RX	类型	115200
SOFTSERIAL1	<input type="checkbox"/> MSP 115200	类型	AUTO	<input type="checkbox"/> Serial RX	类型	115200

对频:

- AC900(S-FHSS):开控并且设置遥控器制式为 S-FHSS,然后按住接收机上对频按钮上电,接收机指示灯变成绿色常亮,表示对频成功.
- AC900(D16):开控并且激发遥控器进入对频模式,然后按住接收机上对频按钮上电,接收机指示灯变成绿色常亮,表示对频成功.
- RX2A:开控,激发遥控器进入对频模式,然后按住接收机上对频按钮上电,接收机指示灯变成绿色常亮,表示对频成功.

遥控器中立位检查:

连接 INAV 软件,进入接收机选项,检查摇杆中立位 1500 和开关通道,调节请参照遥控器说明进行调节.

**参数配置**

- 轴距:110mm
- 外径:200mm
- 输入电压:3S
- 起飞重量:竞技版 - 188g,FPV 版 - 200g,RTF 竞技版 - 188g,RTF FPV 版 - 200g

备注:起飞重量=PNP 重量+模拟电池 68g,电池重量<70g

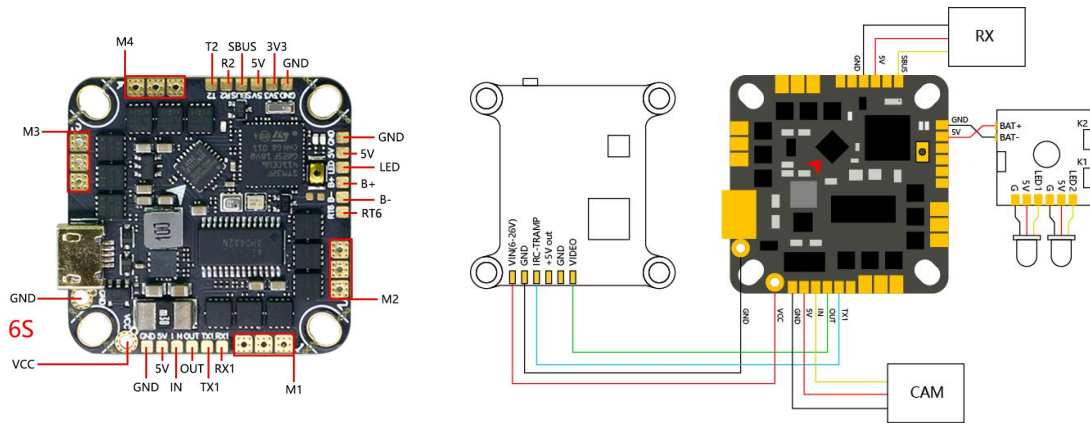
配置

- 飞控+电调:MR26-AIO-F411E35A
- 电机:XT1105L-4250KV
- 螺旋桨:2840-3 叶桨
- 灯控+LED:2CH-RGB-SYSTEM; 38 颗 LED,颜色和特效可调

- 竞技版和 FPV 版可选配接收机:RX2A,AC900
- RX2A 采用 AFHDS2A 协议的遥控器(富斯 FS-16,X6 等)
- AC900 支持 FUTABAS-FHSS 和 FRSKYD16

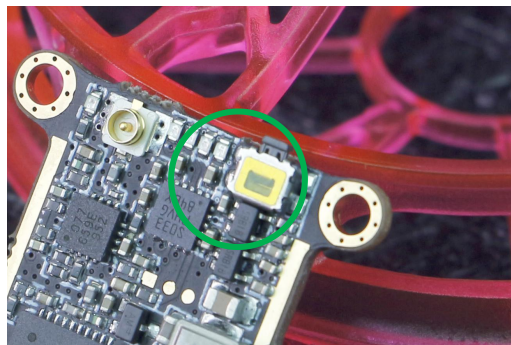
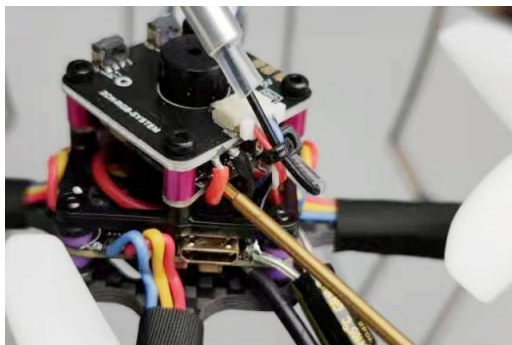
飞控

- 电调目标:g_H_30
- 电流计:100/0



图传:

- 点击图传按钮进行频点切换,使用按钮控制图传需关闭飞控上的 IRC-trump 功能,否则按钮操作无效.
- 点击按钮操作(CH1-CH8).
- 长按按钮 2 秒然后点击操作(BAND_A~AND_R),30 秒无按钮操作后图传将自动存储设置值.
- 长按按钮 6 秒然后点击操作功率等级(25mW~400mW),30 秒无按钮操作后图传将自动存储设置值.



POWER		1	2	3	4	5	6	7	8
● x1 25mW	A	○ ○ ○ ● x1 A 1 : 5865	○ ○ ○ ● x1 A 2 : 5845	○ ○ ○ ● x1 A 3 : 5825	○ ○ ○ ● x1 A 4 : 5805	○ ○ ○ ● x1 A 5 : 5785	○ ○ ○ ● x1 A 6 : 5765	○ ○ ○ ● x1 A 7 : 5745	○ ○ ○ ● x1 A 8 : 5725
● x2 50mW	B	○ ○ ○ ● x2 B 1 : 5733	○ ○ ○ ● x2 B 2 : 5752	○ ○ ○ ● x2 B 3 : 5771	○ ○ ○ ● x2 B 4 : 5790	○ ○ ○ ● x2 B 5 : 5809	○ ○ ○ ● x2 B 6 : 5828	○ ○ ○ ● x2 B 7 : 5847	○ ○ ○ ● x2 B 8 : 5866
● x3 100mW	E	○ ○ ○ ● x3 E 1 : 5705	○ ○ ○ ● x3 E 2 : 5685	○ ○ ○ ● x3 E 3 : 5665	○ ○ ○ ● x3 E 4 : 5645	○ ○ ○ ● x3 E 5 : 5885	○ ○ ○ ● x3 E 6 : 5905	○ ○ ○ ● x3 E 7 : 5925	○ ○ ○ ● x3 E 8 : 5945
● x4 200mW	F	○ ○ ○ ● x4 F 1 : 5740	○ ○ ○ ● x4 F 2 : 5760	○ ○ ○ ● x4 F 3 : 5780	○ ○ ○ ● x4 F 4 : 5800	○ ○ ○ ● x4 F 5 : 5820	○ ○ ○ ● x4 F 6 : 5840	○ ○ ○ ● x4 F 7 : 5860	○ ○ ○ ● x4 F 8 : 5880
● x5 400mW(MAX)	R	○ ○ ○ ● x5 R 1 : 5658	○ ○ ○ ● x5 R 2 : 5695	○ ○ ○ ● x5 R 3 : 5732	○ ○ ○ ● x5 R 4 : 5769	○ ○ ○ ● x5 R 5 : 5806	○ ○ ○ ● x5 R 6 : 5843	○ ○ ○ ● x5 R 7 : 5880	○ ○ ○ ● x5 R 8 : 5917

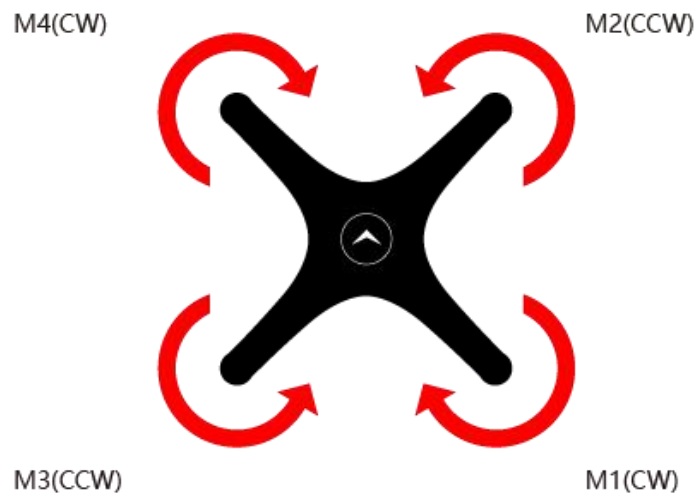
OSD 调参界面:

油门摇杆中立位向左打杆,同时俯仰摇杆向上,进入 OSD 调参界面; 俯仰摇杆上下选择菜单,横滚摇杆向中进入子菜单.

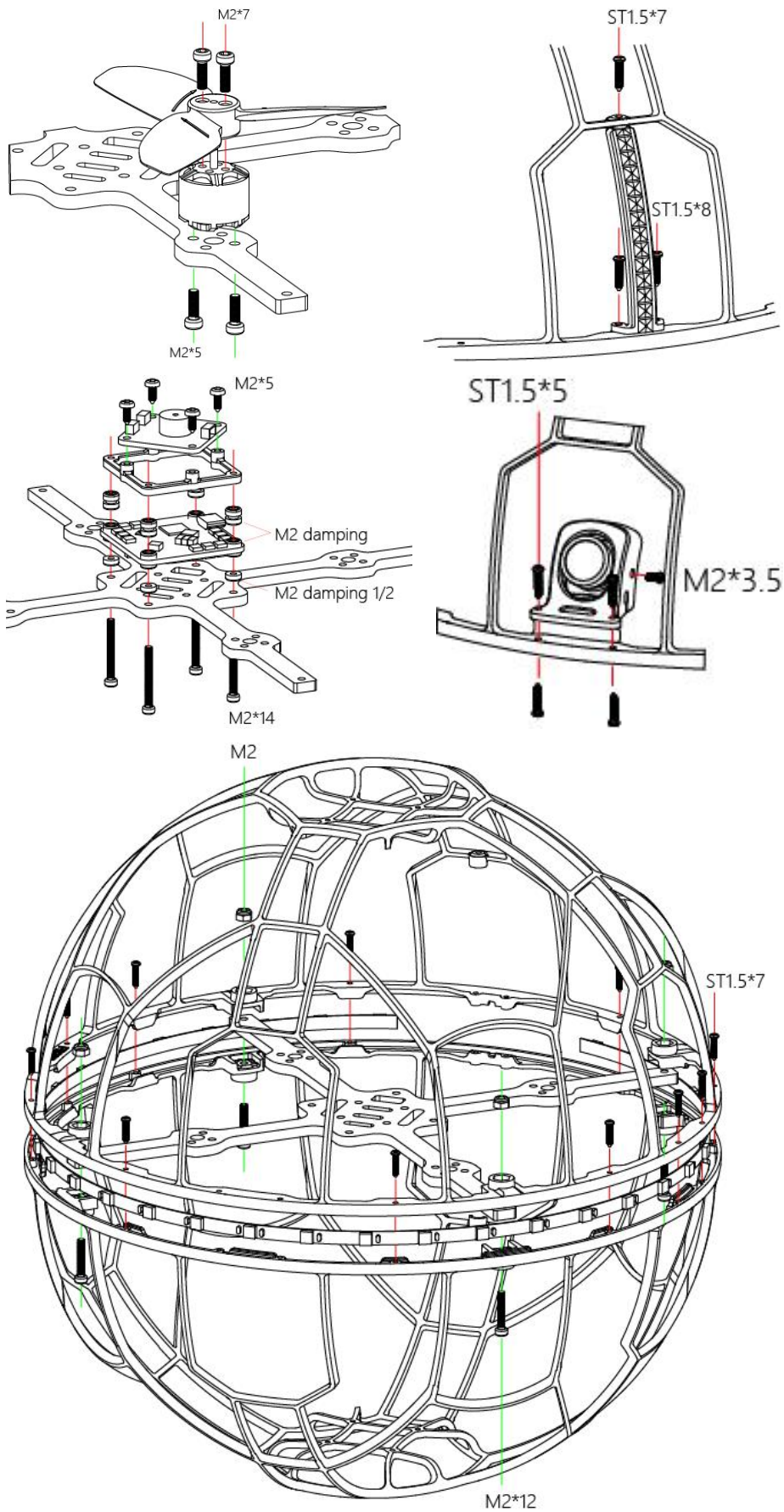


电机方向:

注意电机的旋转方向,正确安装桨叶



安装



产品和编码:

名称	编码
FB200 RACER	L010020
FB200 FPV	L010021
FB200 RTF RACER(MODE2)左手	L01-0022
FB200 RTF FPV(MODE2)左手	L01-0023
FB200 KIT	L02-0006
MR26-AIO-F411E35A	03-0005
MINI ROCKET VTX	03-0003
NANO2 CAM	L03-0010
XT1105L-4250KV MOTOR	L04-0001
FB200 OUTER FRAME(3COLORS)	L05-0011
FB SCORING SYSTEM	L03-0009
FB2 HANDBAG	L05-0013
FB GATE 1200	L05-0014
FB200 LED+CONTROLLER	L05-0015
11.4V 1150MAH 20C BATTERY	L06-0002
EX8 TRANSMITTER(MODE1)右手	L07-0001
EX8 TRANSMITTER(MODE1)右手	L07-0002
EX8 TRANSMITTER COMBO(TX+RX+SIM)	L07-0003
2840-3BLADES PROP(10PAIRS)	L08-0004

PNP/RTF 套机出厂检测报告

飞行测试:

- 遥控器功能正常
- 测试飞行状态良好
- 摄像头清晰度良好
- 图像传输质量良好

装箱报告

- PNP

- RTF
- 遥控器
- 机体与遥控器 ID 相符
- 机体部件安装到们无缺失
- 热缩管封装到位
- 说明文件齐全
- 配件包齐全,共_____包
- 装箱员_____

售后服务

客户收到货以后,发现产品不能正常使用,返厂检验为质量问题的,无偿提供维修服务.对不正当操作造成的产品损坏,检验可以维修的情况下,提供有偿维修服务.国内客户请与售后服务人员联系,海外客户请与经销商联系.