

RNR EQUIPMENT OPTIONS



**BATCH
SYSTEMS
SYSTEMS**
MANUAL, SEMI-AUTO, AND AUTO OPTIONS
125, 200, 400, 800 GAL

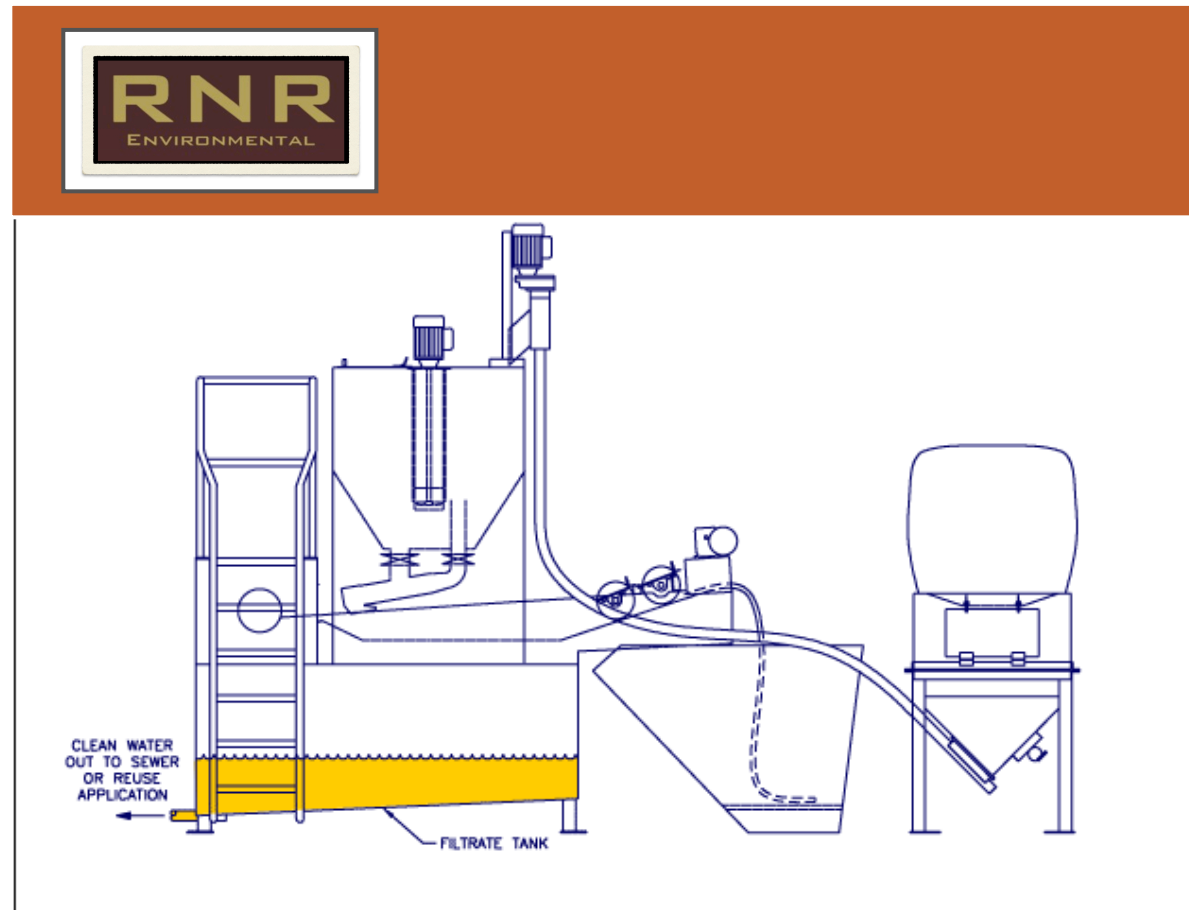
**CONTINUOUS
SYSTEMS**
MANUAL, SEMI-AUTO AND AUTO OPTIONS
2 GPM – 50 GPM

**I&E
BATCH & CONTINUOUS
SYSTEMS**
MANUAL, SEMI-AUTO AND AUTO OPTIONS
REMOTE ACCESS AND MONITORING
200 GAL – 2,000 GAL BATCHES
5 GPM – 300 GPM

TODAY'S FOCUS

RNR EQUIPMENT for BATCH-TREATING

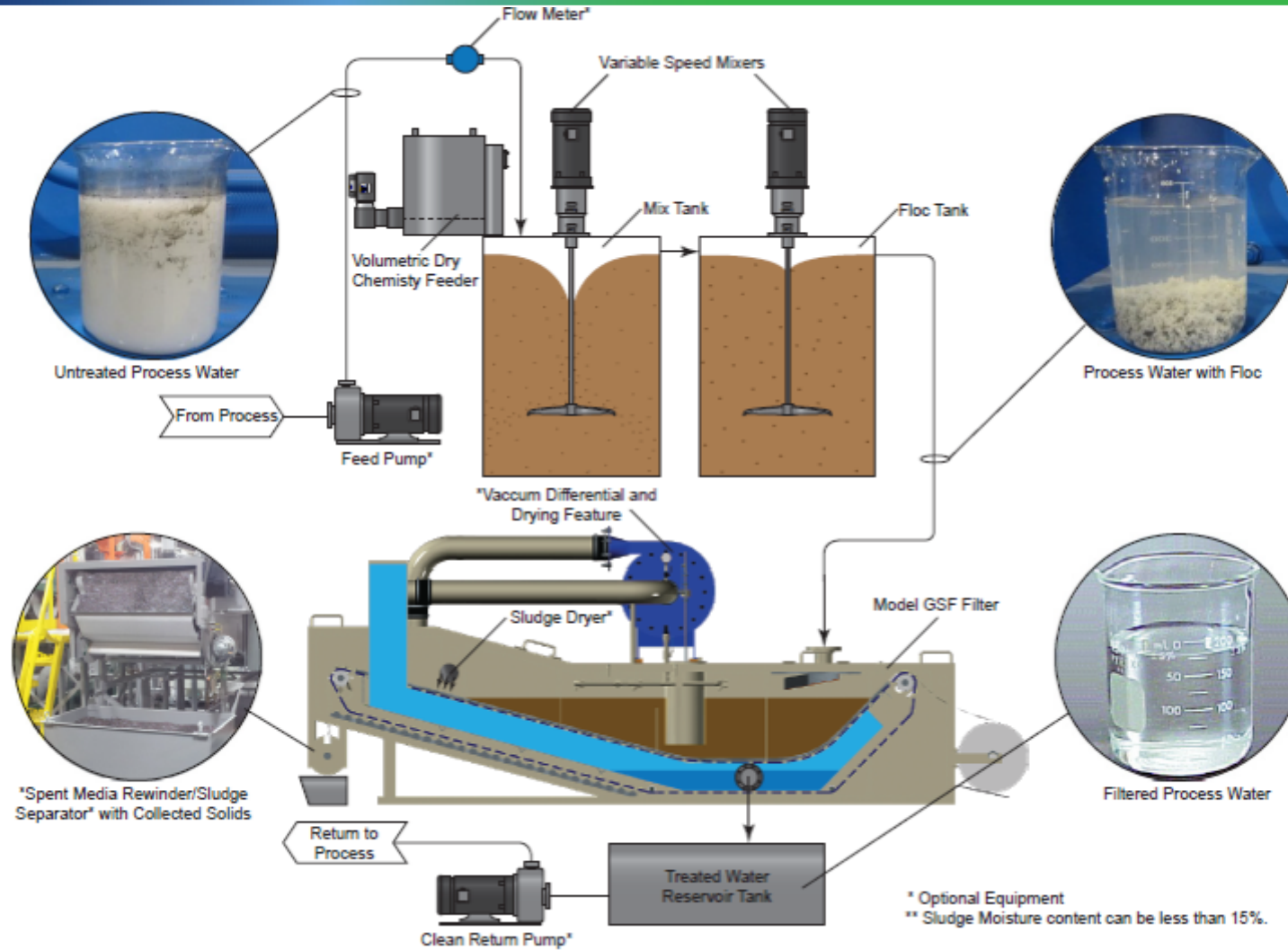
Equipment BATCH



RNR Equipment for Continuous Flow Treating

Equipment

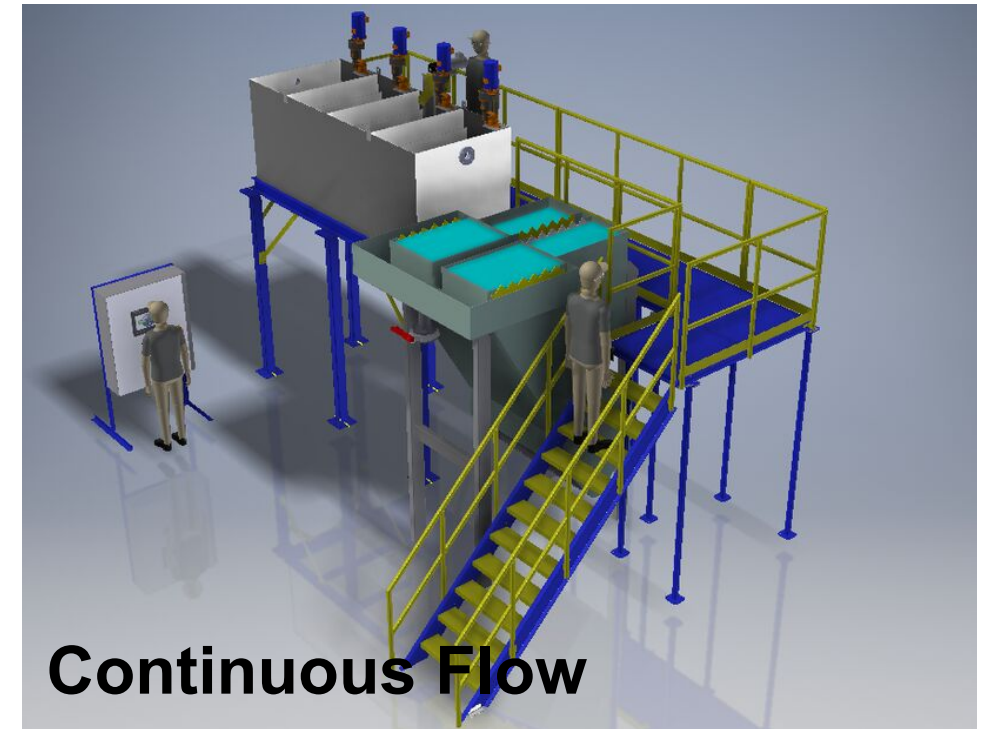
CONTINUOUS FLOW

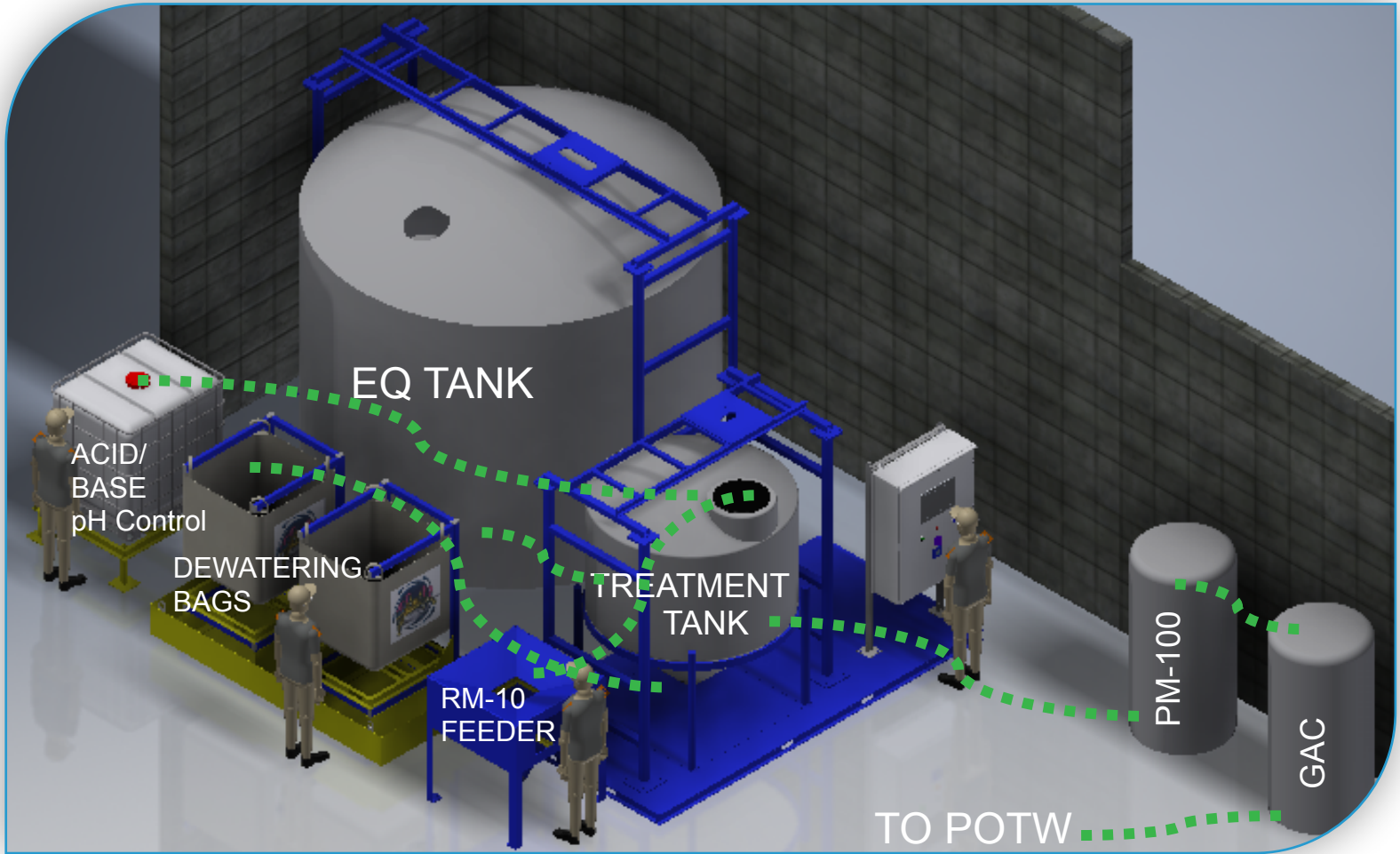


More RNR Equipment options

Equipment Options

Industrial & Environmental: Batch or Continuous

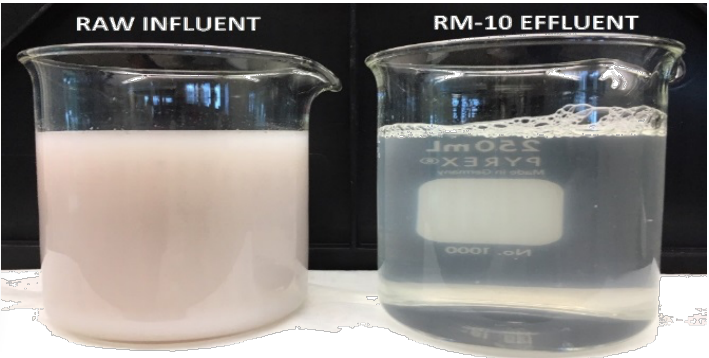


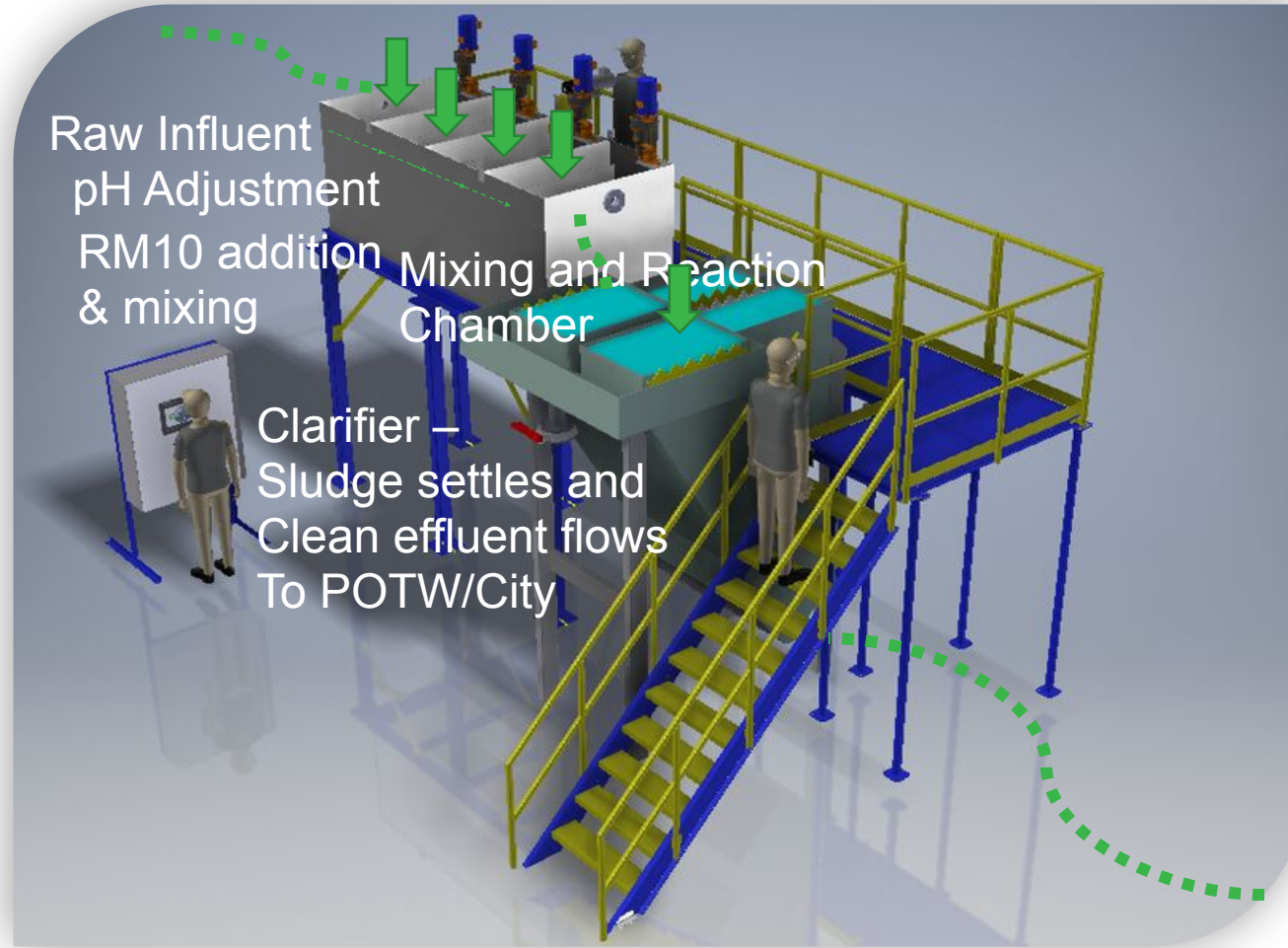


SAMPLE INSTALLATION

I&E Automated Ecotreat Batch System

6,000 – 8,000 gpd





SAMPLE INSTALLATION

I&E Automated Ecotreat
Batch System

6,000 – 8,000 gpd

