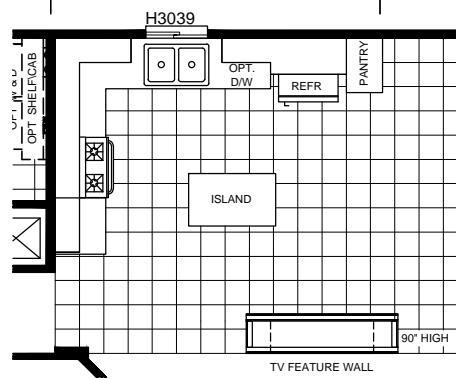
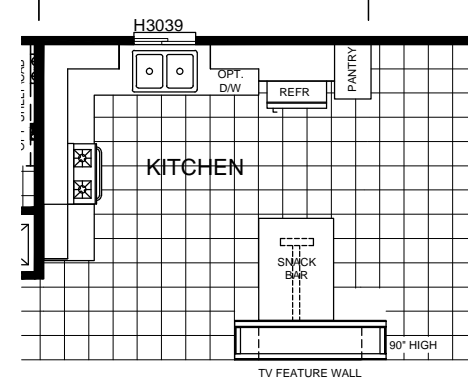


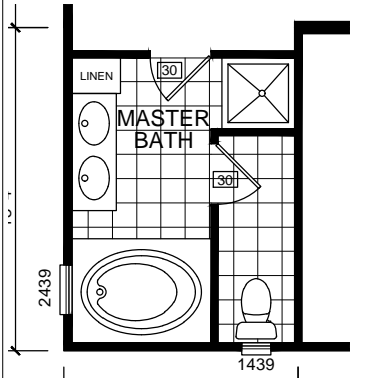
OPTIONAL DEN



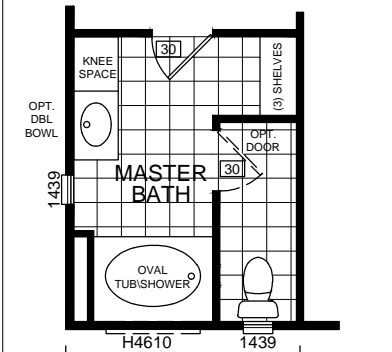
OPTIONAL KITCHEN-A



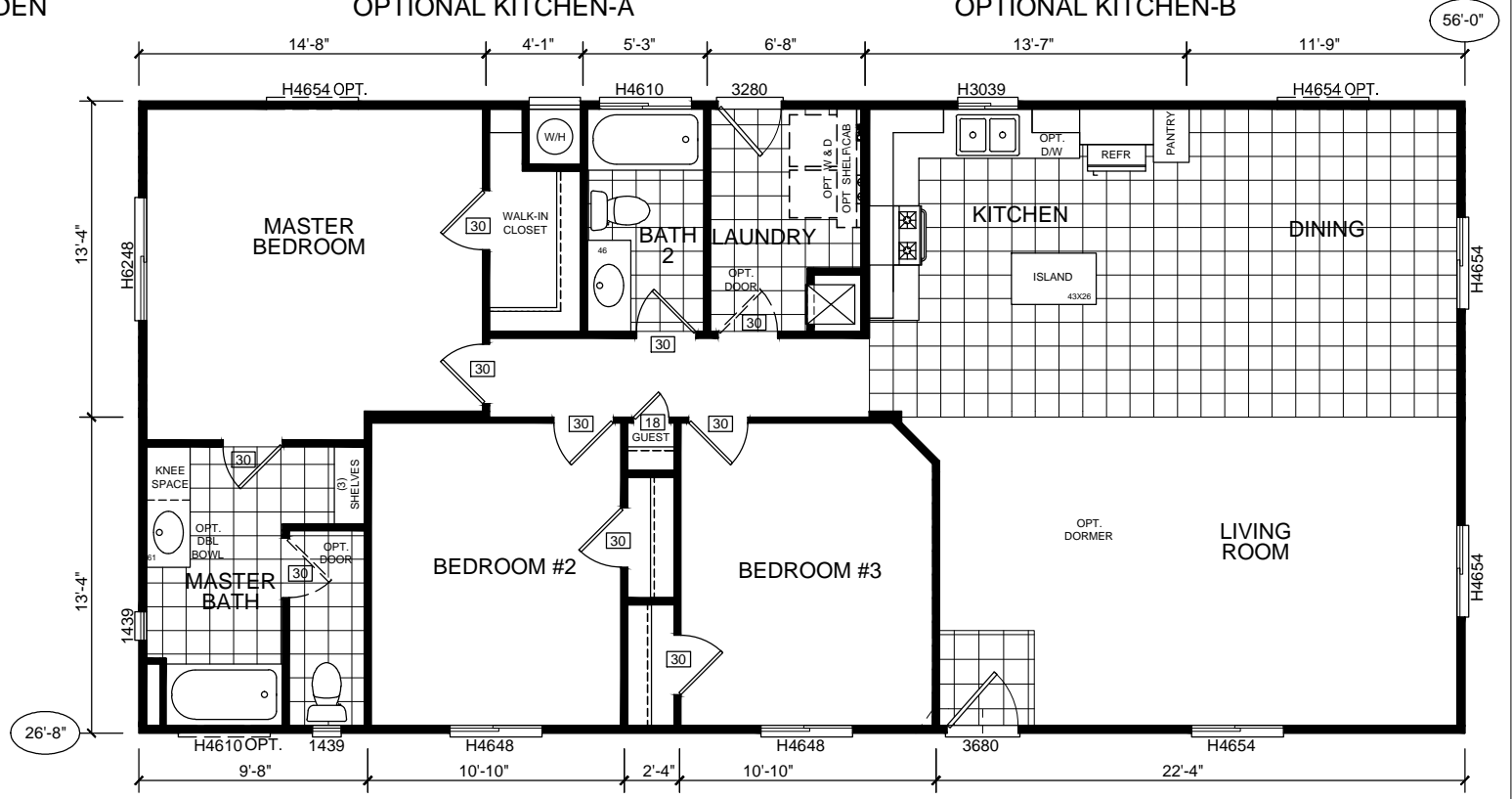
OPTIONAL KITCHEN-B



OPTIONAL MASTER BATH - B



OPTIONAL MASTER BATH - A



BD-07-5627 1493 SQ. FT. 56'-0" x 26'-8"

*WINDOW SIZES SUBJECT TO CHANGE-8/3/15

Silvercrest CHAMPION
 MANUFACTURED BEAUTIFULLY™
 299 N. Smith Ave., Corona CA 92880

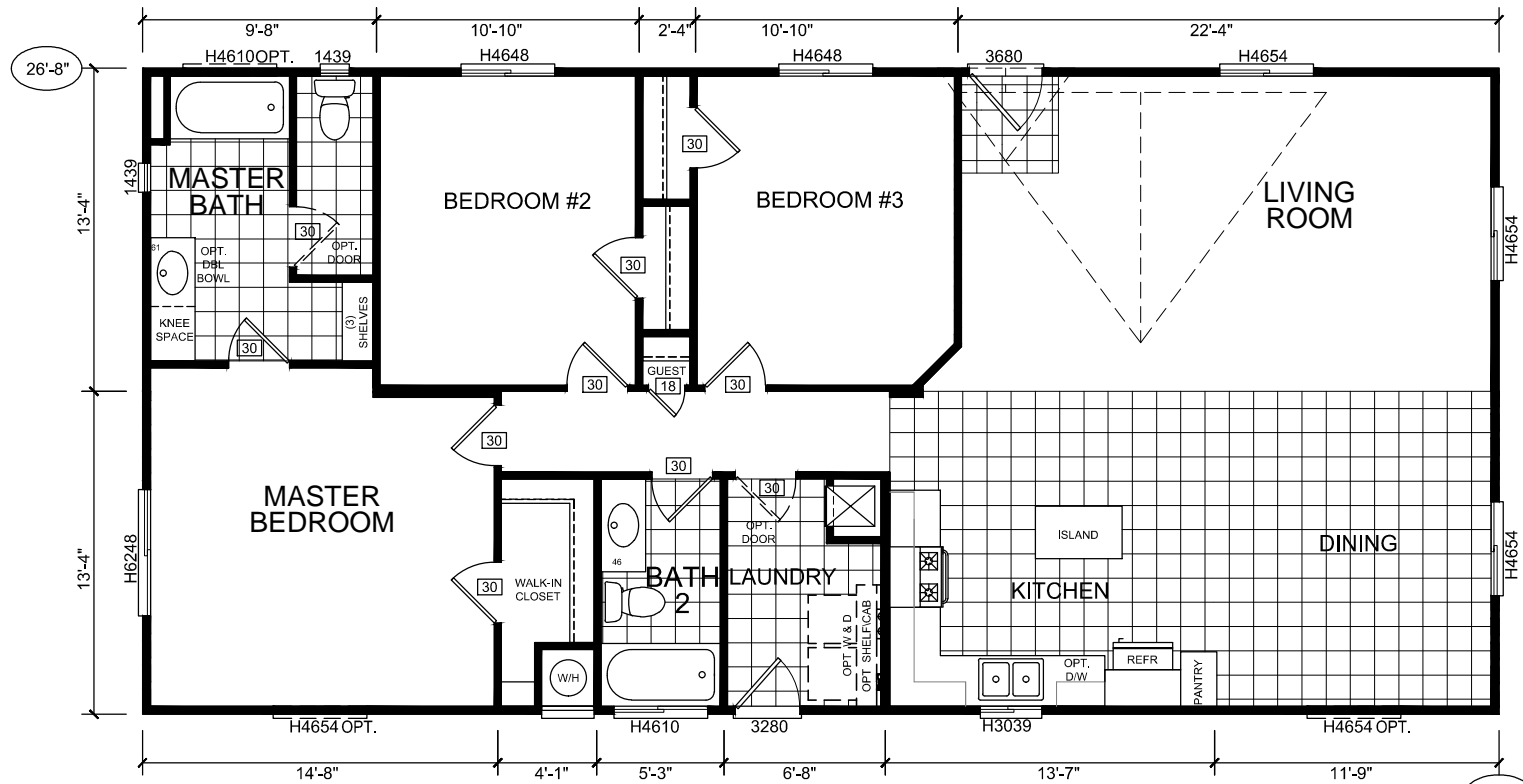
PROPRIETARY AND CONFIDENTIAL
 THESE DRAWINGS AND SPECIFICATIONS ARE ORIGINAL.
 PROPRIETARY AND CONFIDENTIAL MATERIALS OF
 CHAMPION HOME BUILDERS INC.
 COPYRIGHT © 1976-2015 BY CHAMPION

APPROVER'S SEAL

MODIFICATIONS	
1A SEE REV PAGE	DJM 10-18-11
2-GAS W/H	BMS 2-18-12
7-SEE REV LOG	AMG 06-17-15

MODEL:	BD-07-5627	
	56/27-3BR	
TITLE:	LITERATURE PLAN	
DATE: 8-12-11	SCALE: 1/8" = 1'-0"	FILENAME:
DRAWN BY: BMS	CHECKED BY:	BD-07-5627-LT101

SHEET NO.:	LT-101
PAGE:	1 OF 1



BD-07-5627 1493 SQ. FT. 56'-0" x 26'-8"

Silvercrest CHAMPION
 MANUFACTURED BEAUTIFULLY™
 299 N. Smith Ave., Corona CA 92880

PROPRIETARY AND CONFIDENTIAL
 THESE DRAWINGS AND SPECIFICATIONS ARE ORIGINAL,
 PROPRIETARY AND CONFIDENTIAL MATERIALS OF
 CHAMPION HOME BUILDERS INC.
 COPYRIGHT © 1976-2015 BY CHAMPION

APPROVER'S SEAL

MODIFICATIONS

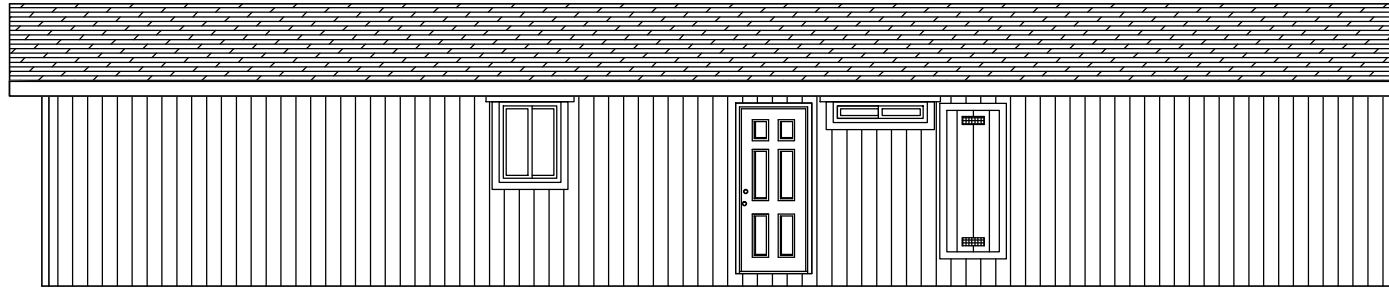
MODEL: **BD-07-5627**
 56/27-3BR

TITLE: **OPT. LITERATURE PLAN**

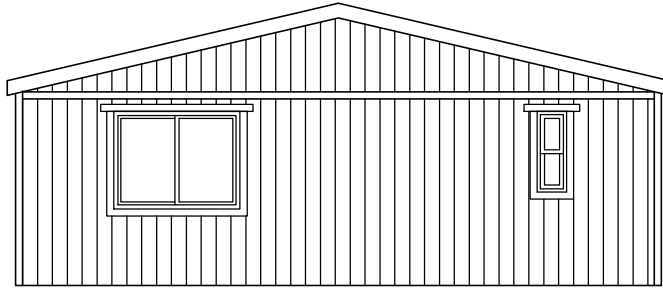
DATE: 8-12-11 SCALE: 1/8" = 1'-0"
 DRAWN BY: BMS CHECKED BY:

SHEET NO.: **LT-103**

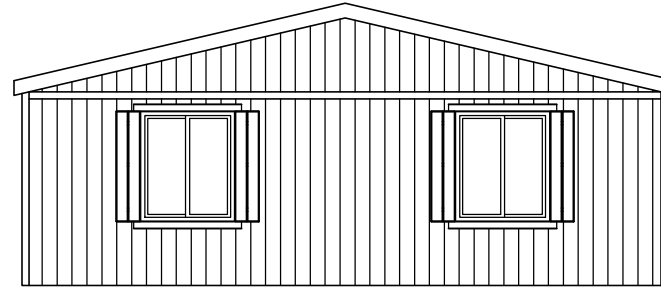
PAGE: **1 OF 1**



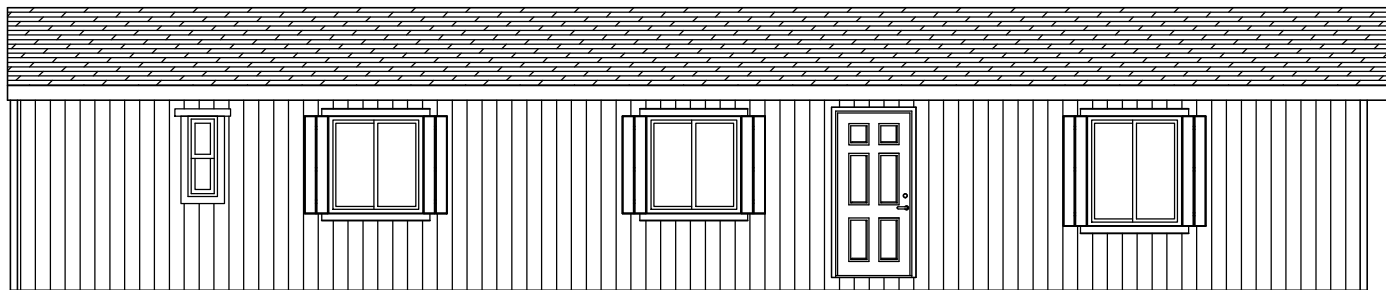
RIGHT



REAR



FRONT



LEFT



299 N. Smith Ave., Corona CA 92880

PROPRIETARY AND CONFIDENTIAL
 THESE DRAWINGS AND SPECIFICATIONS ARE ORIGINAL,
 PROPRIETARY AND CONFIDENTIAL MATERIALS OF
 CHAMPION HOME BUILDERS INC.
 COPYRIGHT © 1976-2015 BY CHAMPION

APPROVER'S SEAL

MODIFICATIONS

2-GAS W/H
 4-SEE REV LOG
 5-SEE REV LOG

BMS 2-18-12
 BMS 02-17-14
 BMS 04-09-14

MODEL:

BD-07-5627

56/27-3BR

TITLE:

ELEVATIONS

DATE: 8-12-11

SCALE: 1/8" = 1'-0"

FILENAME:

BD-07-5627-LT101

DRAWN BY: BMS

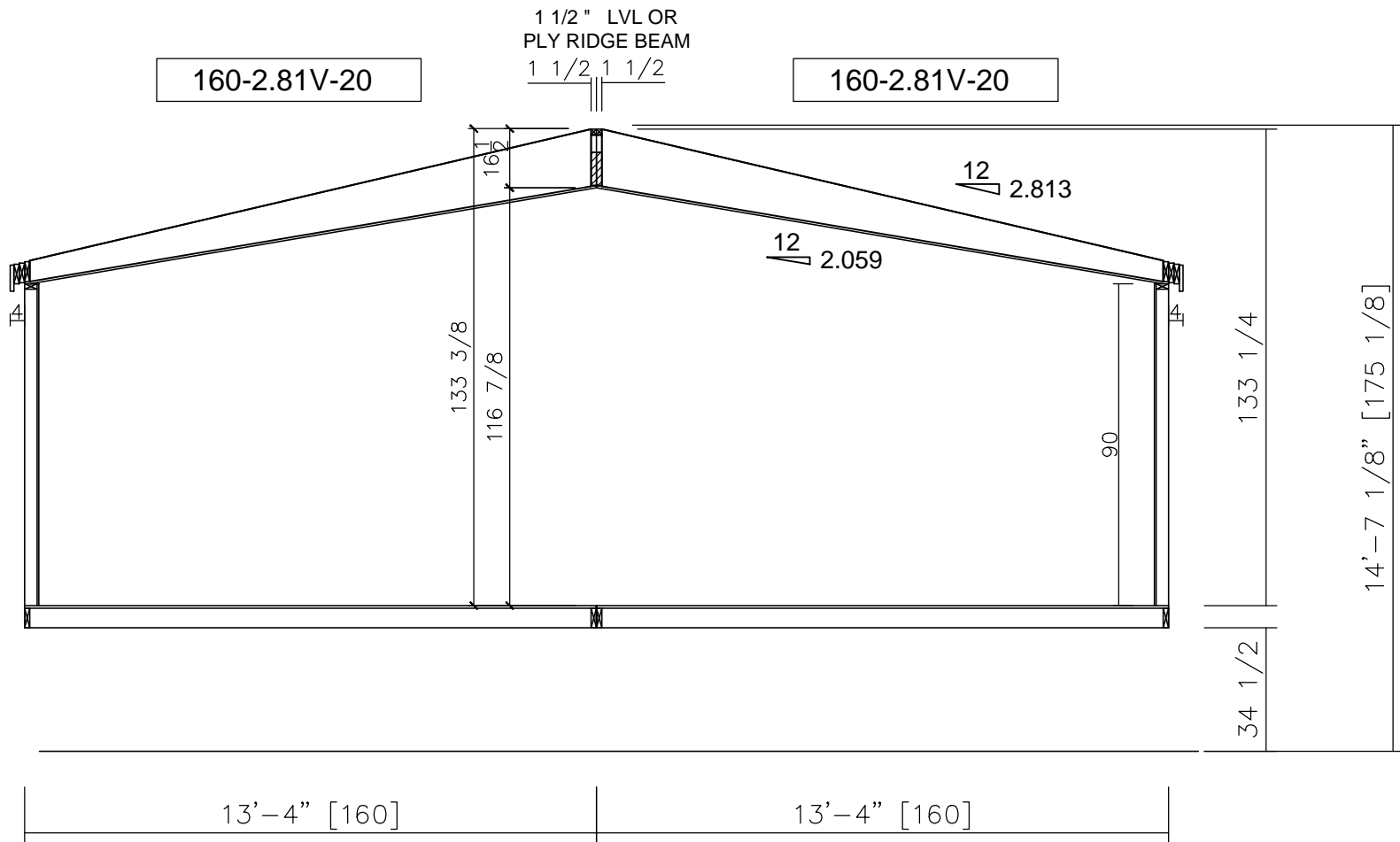
CHECKED BY:

SHEET NO.:

AE-101

PAGE:

1 OF 1



Silvercrest CHAMPION
 MANUFACTURED BEAUTIFULLY™
 299 N. Smith Ave., Corona CA 92880

PROPRIETARY AND CONFIDENTIAL
 THESE DRAWINGS AND SPECIFICATIONS ARE ORIGINAL,
 PROPRIETARY AND CONFIDENTIAL MATERIALS OF
 CHAMPION HOME BUILDERS INC.
 COPYRIGHT © 1976-2015 BY CHAMPION

APPROVER'S SEAL

MODIFICATIONS
 6-SEE REV LOG DJM 9-26-14

MODEL: **BD-07-5627**
 56/27-3BR

TITLE: **CROSS SECTION**

DATE: 8-12-11 SCALE: 1/4" = 1'-0" FILENAME:
 DRAWN BY: BMS CHECKED BY: BD-07-5627-LT101

SHEET NO.: **AS-101**

PAGE: **1 OF 1**