

WC-20-6130 (1712 SQ. FT.) 61'-0" x 30'-0" NO PORCH
 (1842 SQ. FT.) 61'-0" x 30'-0" WITH PORCH

Silvercrest CHAMPION
 MANUFACTURED BEAUTIFULLY™
 299 N. Smith Ave., Corona CA 92880

PROPRIETARY AND CONFIDENTIAL
 THESE DRAWINGS AND SPECIFICATIONS ARE ORIGINAL.
 PROPRIETARY AND CONFIDENTIAL MATERIALS OF
 CHAMPION HOME BUILDERS INC.
 COPYRIGHT © 1976-2016 BY CHAMPION

APPROVER'S SEAL

MODIFICATIONS

MODEL: WC-20
 61/30-0-3BR

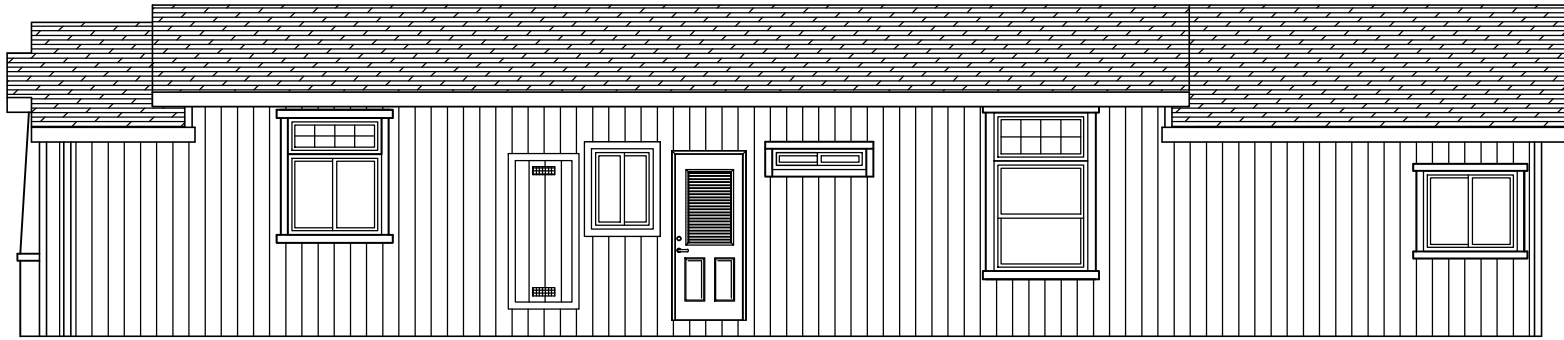
TITLE: LITERATURE PLAN

DATE: 10-29-13 SCALE: 1/8" = 1'-0" FILENAME: WC-20-LT101

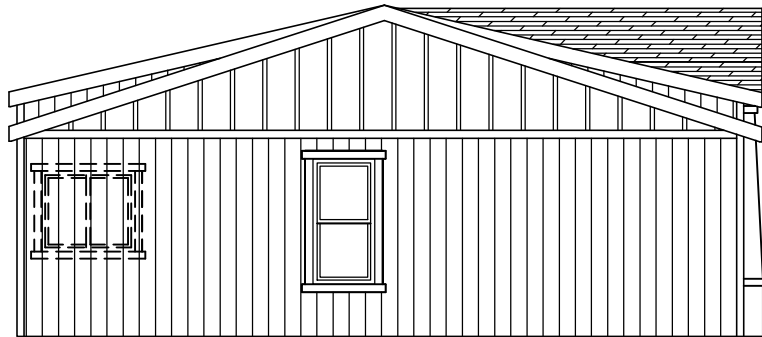
DRAWN BY: BMS CHECKED BY:

SHEET NO.: LT-101

PAGE: 1 OF 1



RIGHT



REAR



FRONT



LEFT



299 N. Smith Ave., Corona CA 92880

PROPRIETARY AND CONFIDENTIAL
 THESE DRAWINGS AND SPECIFICATIONS ARE ORIGINAL.
 PROPRIETARY AND CONFIDENTIAL MATERIALS OF
 CHAMPION HOME BUILDERS INC.
 COPYRIGHT © 1976-2016 BY CHAMPION

APPROVER'S SEAL

MODIFICATIONS

MODEL:

WC-20
 61/30-0-3BR

SHEET NO.:

TITLE:

ELEVATIONS

AE-101

DATE: 10-29-13

SCALE: 1/8" = 1'-0"

FILENAME:

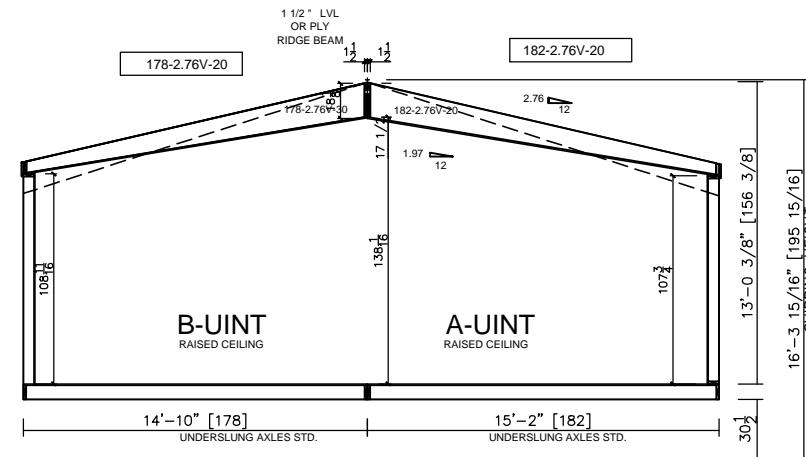
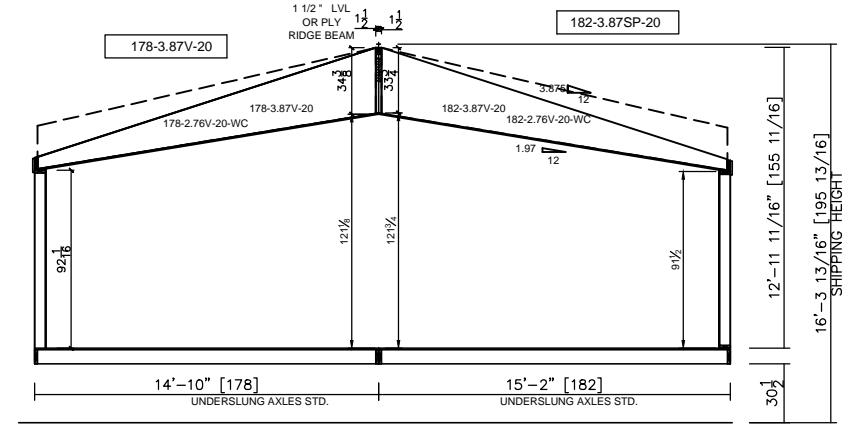
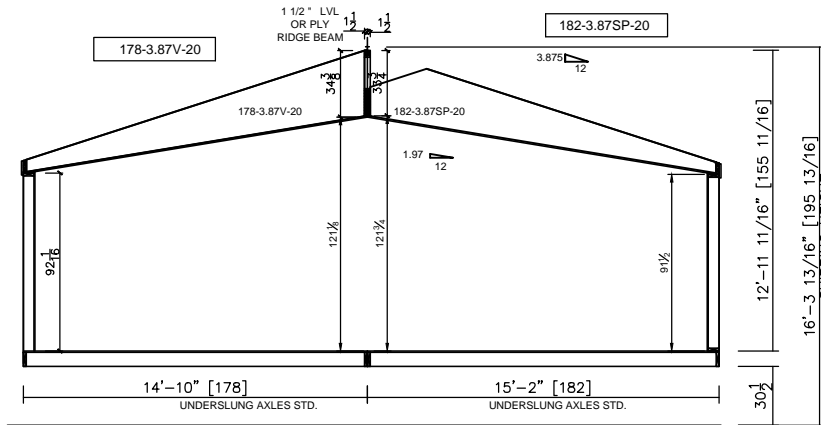
PAGE:

DRAWN BY: BMS

CHECKED BY:

WC-20-LT101

1 OF 1



299 N. Smith Ave., Corona CA 92880

PROPRIETARY AND CONFIDENTIAL
 THESE DRAWINGS AND SPECIFICATIONS ARE ORIGINAL,
 PROPRIETARY AND CONFIDENTIAL MATERIALS OF
 CHAMPION HOME BUILDERS INC.
 COPYRIGHT © 1976-2016 BY CHAMPION

APPROVER'S SEAL

MODIFICATIONS

MODEL:

WC-20
 61/30-0-3BR

SHEET NO.:

AS-101

TITLE:

CROSS SECTION

DATE: 10-29-13

SCALE: N.T.S.

FILENAME:

PAGE:

DRAWN BY: BMS

CHECKED BY:

WC-20-LT101

1 OF 1