

READ ALL INSTRUCTIONS

OPERATION AND LIGHTING:

1. Use only high quality MAPP, Map/Pro, Propane gas cylinder.
2. Before installing the torch to the gas cylinder, make sure the valve is OFF by turning the gas adjustment knob in clockwise direction until hand tight only. DO NOT FORCE.
3. Hold the torch and the gas cylinder upright. Turn the gas cylinder(Fig.1) counter-clockwise into the torch valve body until hand tight and attached securely to the torch connector. Check connection for leaks.
4. Turn the gas adjustment knob counter-clockwise about 1/2 to 1 turn, and then push the safety lock(Fig.2) lever to OFF.
5. To engage the ignition button lock for a continuous work, press the ignition button(Fig.3) and push the flame locking lever(Fig.4) down. Then release the ignition button(Fig.5).

COLD WEATHER OPERATION:

In cold weather, the size of the flame can be smaller due to lower gas pressure. To produce a larger flame, pre-warm the gas cylinder to room temperature prior to use. Shaking the gas cylinder a few times to warm the fuel up will help. There is a possibility that the flame will extinguish when the torch is turned upside down in cold weather.

GENERAL SAFETY RULES:

1. Do not use this torch until you have read and understood all of the operation instructions and cautions and familiarize yourself with the torch before you use it. Review instructions and cautions. Deviating from these procedures may result in fire, explosion, property damage and/or operator injury. Do not try to operate before reading instructions.
2. Use any fuel other than MAPP, Map/Pro, or Propane with this torch may cause a fire or explosion.
3. Wait for the torch to cool down before tightening or removing torch head and before installing or removing accessories.
4. Do not point torch towards face, other persons or flammable objects. Never attempt to use torch as a cigarette lighter.
5. Disconnect gas cylinder when not in use. Never store with torch attached to the gas cylinder.
6. Do not attach or detach the torch from the cylinder at where accidentally released gas might be ignited by open flames.
7. Never attempt to modify the torch construction and never use unapproved fuel.
8. Treat the torch as any fine tool or instrument. The use of improperly operated, maintained, repaired, or modified torches is dangerous and can cause damages to the product and/or property, and even body injury or death.
9. Do not use a leaking, damaged or malfunctioning torch.
10. Work only in well-ventilated areas.
11. Always place your work on firebrick. Ordinary brick and concrete can explode when subject to a high temperature. Do not work on wood or metal surfaces. Always shield your work.
12. Always wear protective glasses and gloves. Use proper tools to handle hot work.
13. Be aware that the tip of the torch can get extremely hot during use. Be especially careful around motor vehicles or any gasoline powered careful products and beware of hidden fuel lines and tanks.
14. Always make sure that the torch is placed on a level surface when connected to the gas cylinder to reduce the risk of accidental tip over. Be sure torch is not pointed in a direction which could cause nearby objects to be burned when torch is set down.
15. When thawing pipes, be very careful not to overheat surrounding materials.
16. Always have a fire extinguisher and a bucket of water near the torch and work area. Do not place them in the flame path or location where you could not reach them should a fire break out.

DANGER

EXTREMELY FLAMMABLE. CONTENTS UNDER PRESSURE. Keep out of the reach of children. Keep away from heat or flame. It is illegal and dangerous to refill the cylinder. Obtain new gas cylinder from your dealer. Avoid prolonged exposure to sunlight. Do not store near heat or in a room used for habitation. Always close torch valve and wait until cool before removing torch from gas cylinder. Always detach gas cylinder from torch when not in use. Do not breath gas, fumes, vapor or spray. If inhaled, remove affected person to fresh air. Avoid contact with skin and eyes. For skin contact, flush with large amount of water. In case of contact with eyes, rinse immediately with plenty of water and seek medical advice. When gas cylinder is empty, discard in a safe place. Do not throw in fire. Do not puncture or incinerate container.

SHUTDOWN AND STORAGE:

1. Press the ignition button(Fig.3) again to release the ignition. Note: The flame may continue to burn for a short period of time if the torch has been operated in an inverted (upside down) position.
2. When torch is cool, turn the gas cylinder(Fig.1) clockwise to disconnect it. Slightly pull the ignition button to vent the remaining gas inside the torch.
3. Store the torch and gas cylinder separately. Read other cautions on gas cylinder label.

FLAME ADJUSTMENT:

1. Turn the adjustment knob to control the gas output according to different applications.
2. The maximum heat zone is very concentrated. It's located between 1/2" to 1" from the end of the tip. Holding the torch too close or too far away from the target can reduce the heating effect.

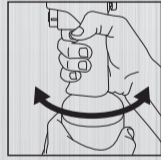


Fig. 1

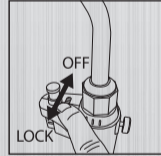


Fig. 2

Safety Lock

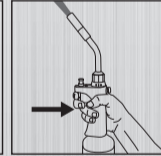


Fig. 3

Press Ignition button

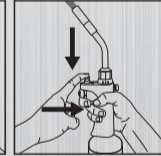


Fig. 4

Press Ignition button & push the flame lock for continuous work

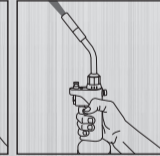


Fig. 5

Press Ignition button again to shutdown

WARNING: This product contains chemicals, including lead and lead compounds in brass fittings. It also produces combustion by-products when used. These substances are known to the State of California to cause cancer, birth defects or other reproductive harm.

Wash your hands after using this product. Contains lead. May be harmful if eaten or chewed. Complies with Federal standards.

WARNING: Keep out of children's reach. For more information, go to www.P65Warnings.ca.gov

SAVE THESE INSTRUCTIONS

Compatible with MAPP, MAP-PRO and Propane.
For best performance, we recommend using together with BLUEFIRE MAPP gas.

BLUEFIRE®

Trigger-Start Metal Handle Torch

BTS-8090

Flame Type



2462°F
1350°C

Brazing Fuel

Feature:

- Ergonomic Metal handle
- Suggest to use high standard MAPP, MAP-PRO or Propane gas
- Trigger Start ignition
- Safety lock to prevent accidental ignition
- Ignition Button lock for continuous use
- Swirl flame

Ideal for:

- Heat treating
- Braze Copper Pipe
- Harden Steel
- Thawing Pipes
- Loosen Rusty Bolts



www.aerogas.com



WEAR YOUR SAFETY GLASSES

BTS-8090 NEW

4 713431 004528

Distributed by
Aerogal Gas Company, Inc

Design in USA

KEEP OUT OF REACH OF CHILDREN
GAS CYLINDERS NOT INCLUDED

www.bluefireusa.com

Specifications:
Torch Size: 285 x 100 x 40 mm
Torch weight: 421 g
Heat temp.: Max. 1350°C / 2462°F
Consumption Rate: 222 g/hr (3.08 KW)
BTU: 8800 BTU/hr
Thread: fits CGA600 US standard cylinder

95x40x295mm