

Rocky Point Fire & EMS Community Emergency Evacuation Plan

541-356-2100

Plan last updated on: 11/2020, 2/2/2021 4/21, 9/21/10/21

If you are in immediate danger, call 911

Plan distribution list

Name	Role	Phone number/email address	Issued on
Brandon Fowler	Klamath County Emergency Coordinator	541-539-1600 bfowler@klamathcounty.org	2/23/2021
Mike Cook	Chiloquin Fire Chief	541-891-2203 Chief@chiloquinfire.com	3/19/21
Larry Woodruff	KCFD #4	541-891-9765 lwoodruff@firedistrict4.com	3/19/2021
Randy Bailey	ODF	541-891-7861	3/19/2021
Eric Krueger	Klamath Ranger Dist	541-891-1101	3/19/2021
Jon Ketchum	Keno Fire Chief	541-891-3601	

Plan amendment list

Date of amendment	Date for next revision	Details of changes made	Changed by
2/2/2021		updates	Chief
9/21		Corrections	Chief
10/21		Additions	
11/16/2021		Corrections	

Contents

Local Risk Assessment.....	4
Local Skills and Resources.....	5
Key Locations for services in an emergency.....	6
Telephone Tree.....	7
First Steps in an Emergency.....	8
Emergency items in a disaster.....	9
Actions agreed with emergency responders in the event of an evacuation	
Alternative arrangements for staying in contact if usual communications have been disrupted	
Maps.....	11
Evacuation Routes/Levels.....	16
Items to take/ Where to Go.....	17
If We can't reach you, We can't alert you.....	18

Local risk assessment

Risks	Impact on community	What can the Community Emergency Group do to prepare?
Wildfire	<ul style="list-style-type: none"> • Blocked access to homes • Damage to property and homes • Injuries • Trapped residents • Unknown residents 	<ul style="list-style-type: none"> • Encourage residents to improve home fire defenses. • Work with local emergency responders to see if they can help with distribution of fire warnings and any evacuation and rest center establishment required • Find out what fire defenses exist or are planned in the area
Winter Weather/Flooding	<ul style="list-style-type: none"> • Creating home bound • Blocking Driveways • Injuries 	Stock up on winter supplies and keep driveways clear
Windstorms/electrical outages	<ul style="list-style-type: none"> • No electricity • Blocked roads • Injuries 	<ul style="list-style-type: none"> • Keep dead trees cut. • Keep candles or other types of lighting items •
Traffic Accidents /Hazmat	<ul style="list-style-type: none"> • Lack of access to areas 	<ul style="list-style-type: none"> • Shelter in place plans
Volcanoes/Earthquakes	<ul style="list-style-type: none"> • Destruction of Property • Blocked roads • Medical Emergencies • Power outages 	<ul style="list-style-type: none"> • Evacuation routes • Shelters outside area. • Food supplies • Medical treatment

Local skills and resources

Skill/Resource	Who?	Contact details	Location	When might be unavailable?
Water/food/supplies	Odessa Market Scott Pantuso	714-247-9992	Hwy 140	
Backhoe	Tim Patterson Chris Anderson	541-301-4056 541-249-3434		
Grader/Water Truck	George Gregory Rob on elm street	541-821-2407		
Bulldozer	Chris Anderson	541-249-3434		
D4 Cat	Cam Curtis	541-892-3990		
Trailers/Stock trailers	Odie Wright Danforths (2) Cam Curtis Derek Kane Al Van Hulzen	541-891-1451 541-891-0669 541-892-3990 541-941-8504 541-810-2112	26 ft	
Siren	Sheila Hunt	541-892-8115		
Dozer/Excavator	Danforths	541-891-0669		
Trailer	Larry Dugger	541-951-7657		
Heavy Equipment Excavator ,trucks	Jeff& Diane Hurd	541-261-2000		
Project Spirit	Laura-541-539-7879 Nadine Hoy 541-891-4151	To move animals		

Key locations identified with emergency services for use as places of safety.

Building	Location	Potential use in an emergency	Contact details of key holder
Harriman Resort	Rocky Point Rd	John Pratt	541-356-0900
Lake of The Woods	950 Harriman	George Gregory Dan McGee Joel Gorman	541-821-2407 734-255-4961 541-301-6915
Rocky point Resort	Rocky Point Rd	Ester	541-356-2287
Social Club	Harriet Drive	Dean Greib	541-892-7641

Pelican Guard Station may be used as a Medical and Triage Facility

telephone tree

CONTACT LIST

<i>NAME</i>	<i>HOME</i>	<i>CELL</i>
<i>Chad Partington</i>	<i>541-356-2315</i>	<i>541-281-9405</i>
<i>Loren Head</i>	<i>541-356-2260</i>	<i>541-892-7987</i>
<i>George Gregory</i>	<i>541-949-8920</i>	<i>541-821-2407</i>
<i>Mike Black</i>	<i>541-356-2550</i>	<i>541-810-1638</i>
<i>Jerry Higgins</i>	<i>541-891-7804</i>	
<i>Tony Bixler</i>	<i>916-541-3760</i>	
<i>Fire Com Dispatch</i>	<i>541-884-4876 ext. 4</i>	
<i>OSP Klamath</i>	<i>541-883-5713</i>	
<i>S.O. Klamath</i>	<i>541-883-5130</i>	
<i>ODF</i>	<i>541-883-5681</i>	<i>Zone 541-884-0516</i>
<i>Sky Lakes ER</i>	<i>541-274-6174</i>	<i>Fax#541-274-6739</i>
<i>RVMC</i>	<i>541- 789-7199</i>	<i>Fax#541-789-7111</i>

If you would like to be added to this list help out ...please email us at chief@rpfire.com

First steps in an emergency

	Instructions	Tick
1	Call 911 (unless already alerted)	
2	Ensure you are in no immediate danger	
3	Contact the Emergency Management Office and meet to discuss the situation	
4	Gather your items needed and prepare to leave.	
5	Shut off gas to your house.	
6	Lock your doors.	
7	Post a sign end of your drive of a red X meaning you have left	
8	Take your cell phone charger.	
9	Medications for you and Pet	
10		

Emergency Items in a Disaster

Date:

Time:

Location:

Attendees:

1. What is the current situation?

Location of the emergency. Is it near:

- A vulnerable area?
- A main access route?
- Type of emergency:
- Is there a threat to life?
- Has electricity, gas or water been affected?

Are there any vulnerable people involved?

- Elderly
- Families with children What **resources do we need?**
- Food?
- Off-road vehicles?
- Blankets?
- Shelter?

2. Establishing contact with the emergency services

3. How can we support the emergency services?

4. What actions can safely be taken?

5. Who is going to take the lead for the agreed actions?

6. Any other issues?

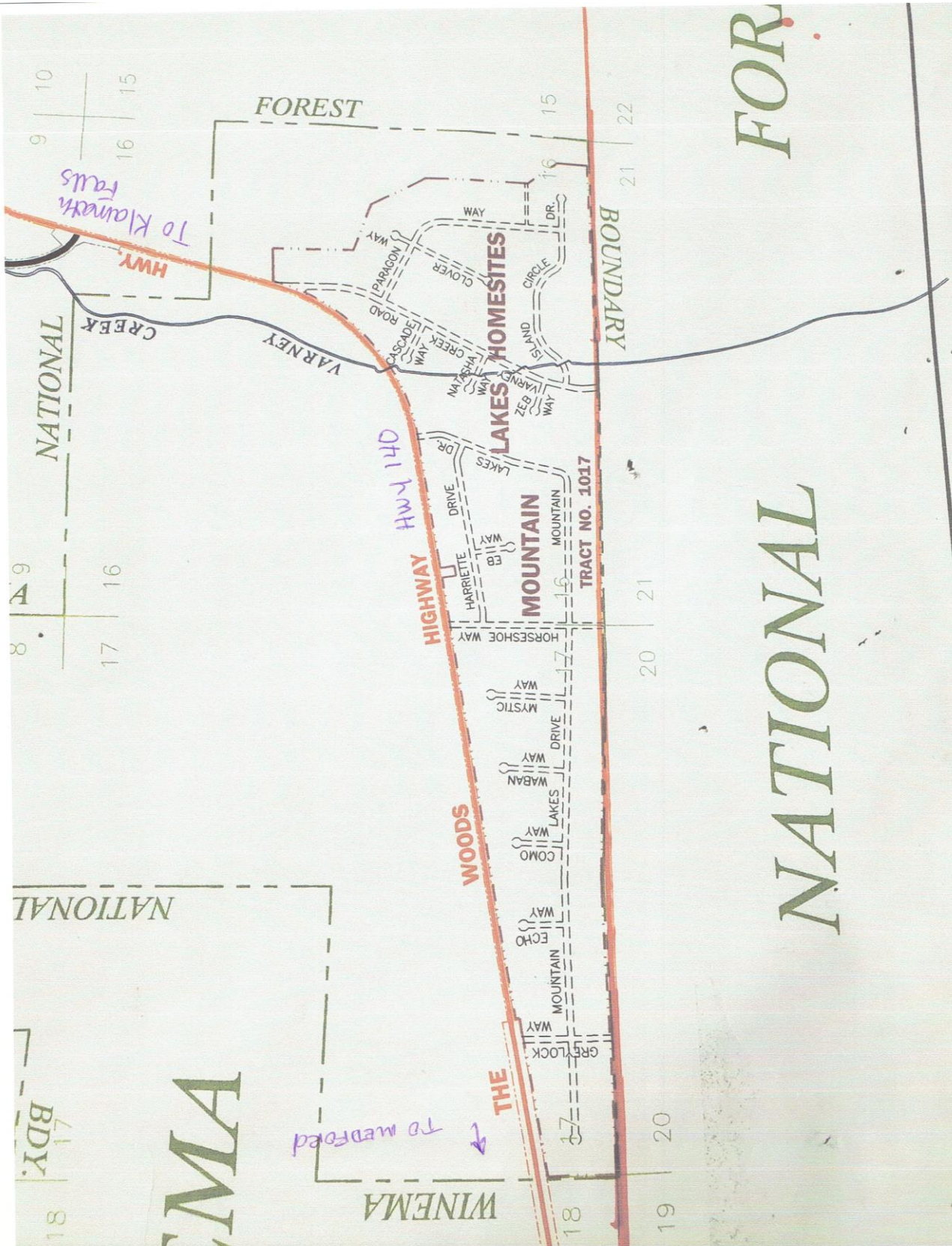
Actions agreed with emergency responders in the event of an evacuation.

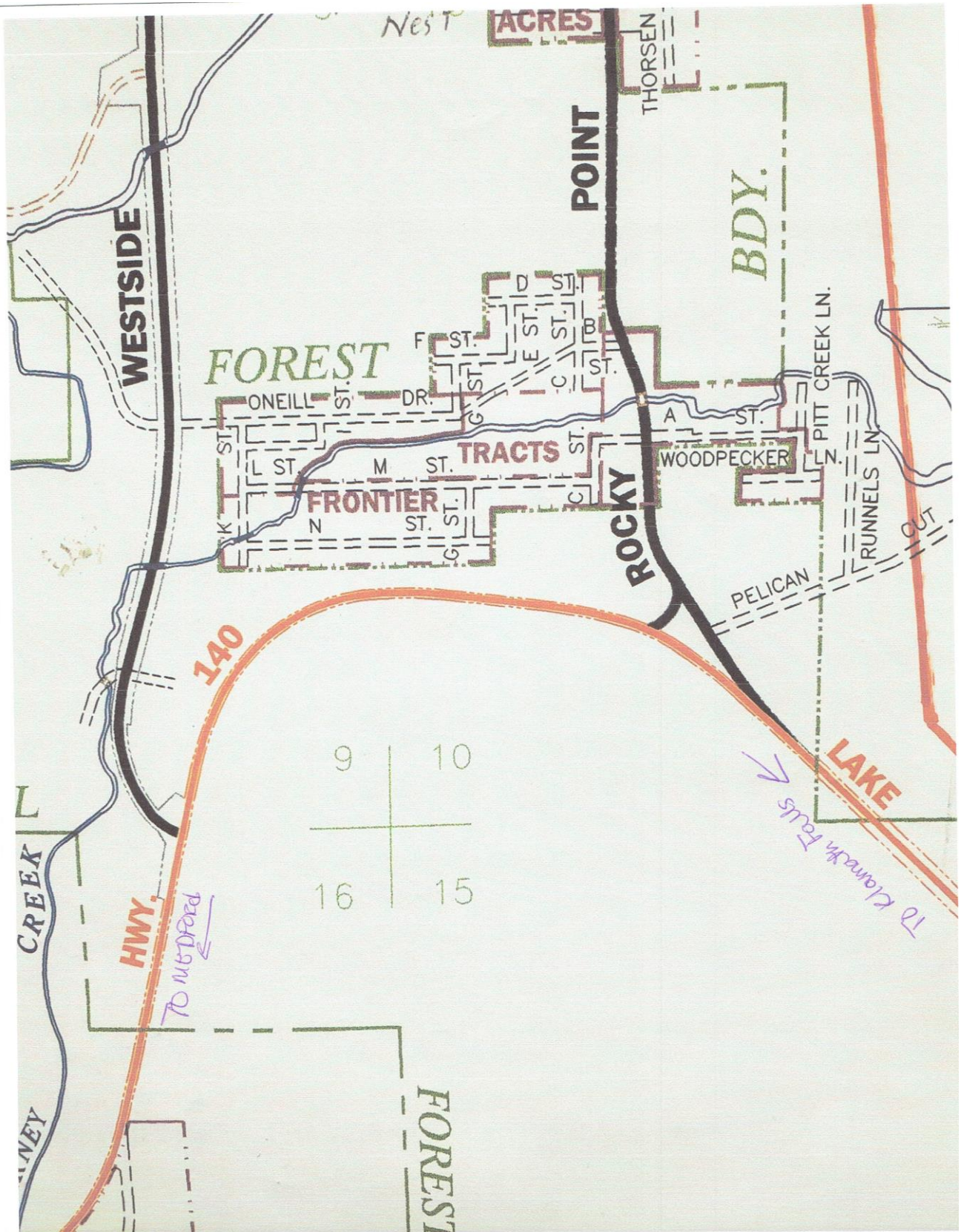
1. Help police/local authority with door knocking
2. Tell emergency services who might need extra help to leave their home

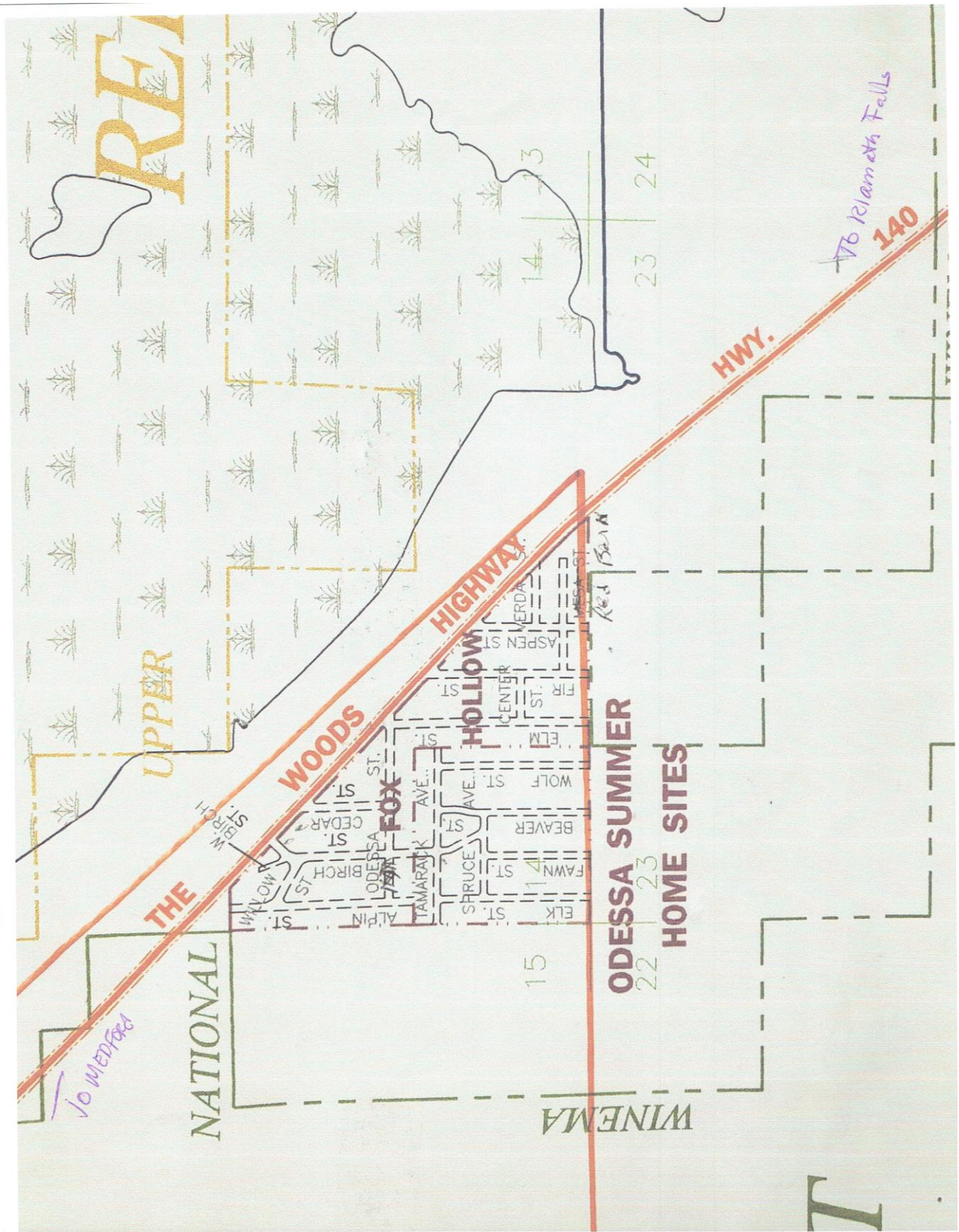
Alternative arrangements for staying in contact if usual communications have been disrupted

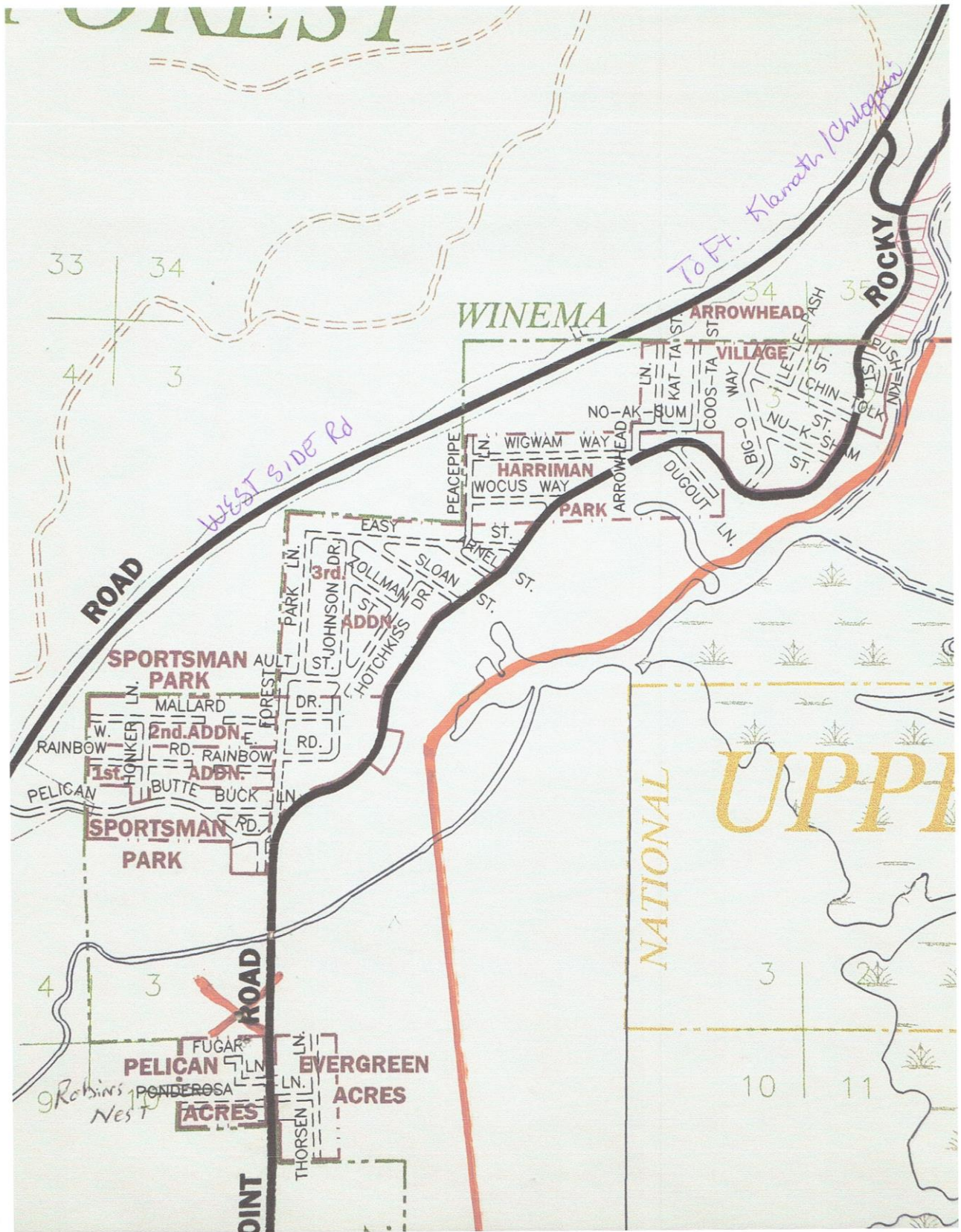
Communication Type	Name of contact	Location
Radio	Day Wireless...Mike Clark	541-884-4315
Ham Radio Group	David Reed	530-362-0201

Maps of Local Area









Evacuation Routes...

Evacuation will be headed up by the Emergency Management and Sheriff's Department and if we have the volunteers, we will assist them. If you need help evacuating, please send us an email at RPfire.com with your name phone number and address and reason you need help. We will start a list of those that need help and provide it to any group that wants to assist the Sheriff's office and Emergency Management.

Predesignated routes are:

Evacuation to the North:

On westside Road to Fort Klamath

Evacuation to West.

Take Hwy 140 West to Medford or Dead Indian Memorial Highway to Hwy 66
Ashland/Medford

Evacuation to East:

Take Hwy 140 to Klamath Falls or West to Dead Indian Memorial Highway and Clover
Creek to Keno

Evacuation to South

West to Dead Indian Memorial Highway and Clover Creek to Keno or Ashland/Medford

Do not take back roads especially in a Wildfire or Winter Conditions. (You may Not Survive)

Remember to Follow Directions Given out by Local Authorities

EVACUATION LEVELS

Level 1 (Be Ready) means- Check on your neighbors. Have then call number on website or sheriff's office help to evacuate

Level 2- (Get Set) Pack your items and prepare to leave

Level 3- (GO) GET OUT NOW

ITEMS TO TAKE WHEN YOU EVACUATE

- 1. Your Medications and Pets medications/Carriers**
- 2. Food and Water for you and your pets**
- 3. All important Documents**
- 4. Daily Care items**
- 5. Cash**
- 6. Clothes**
- 7. Heavy shoes**
- 8. Fuel in car**
- 9. Important contact info**
- 10. First aid kit**
- 11. Cell phone and charger**
- 12. Jacket**
- 13. Blanket**
- 14. Pillow**
- 15. Camping gear**

Areas to evacuate to for pre instructions depending on circumstances

Wampler's field on Hwy 140 East MP 46

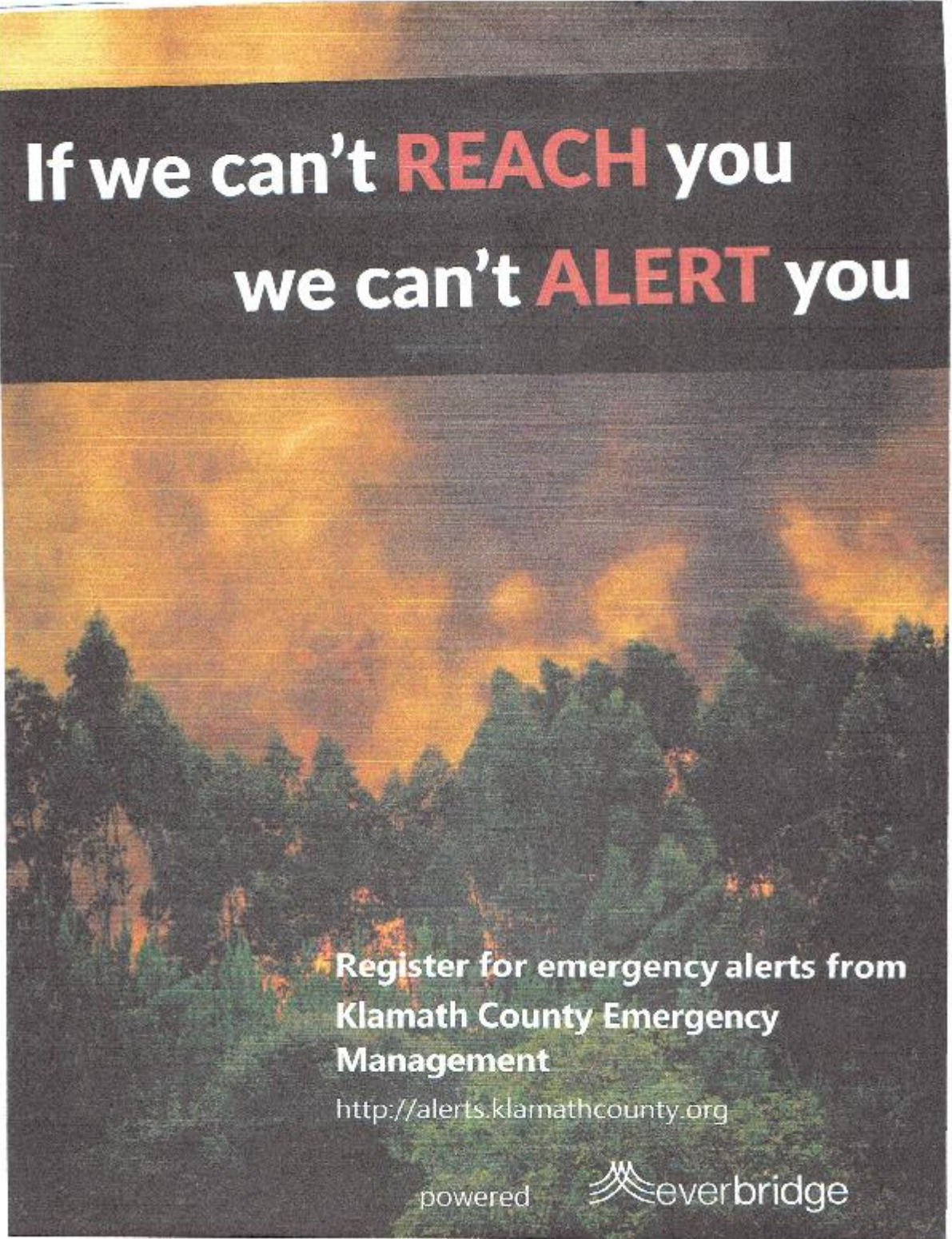
Al Vanhulzan's on Westside Road

Cam Curtis Fields at Bottom of Doak Mountain MP 51

Great Meadows...May be staging area for First Responders.

Bible Camp Varney Creek Rd

Crystal Springs Lodge area...still need permission slip



If we can't **REACH** you
we can't **ALERT** you

Register for emergency alerts from
Klamath County Emergency
Management

<http://alerts.klamathcounty.org>

powered

 everbridge