



# Radio Frequency Infrastructure Sentry

Until now, there has been no way of ensuring that wireless sites are continuously safe and compliant



## DELIVERING CUTTING EDGE INNOVATION

Waterford's patented RFIS device combines frequency spectrum analysis with Waterford's industry-leading RoofMaster™ software to assess and monitor the radio frequency emissions, regulatory compliance, and mitigation control status associated with a wireless telecommunications site.



### Versatility

Suitable for every wireless site type (e.g. rooftops, small cells, in-building/DAS, towers, water tanks, etc.)



### Speed to Market

Aids in zoning and permitting approval by local jurisdictions in *difficult to develop* areas



### Cost Savings

Remote monitoring replaces the need for traditional compliance methods



### Peace of Mind

Addresses municipal, neighborhood, environmental, and personal safety concerns related to RF emissions



### Reduces Risk

Eliminates risk of fines due to non-compliance by facilitating real-time remediation



### Compliance Visibility

Easy-to-use dashboard allows visibility and *on-demand* compliance reporting





## Technical Features

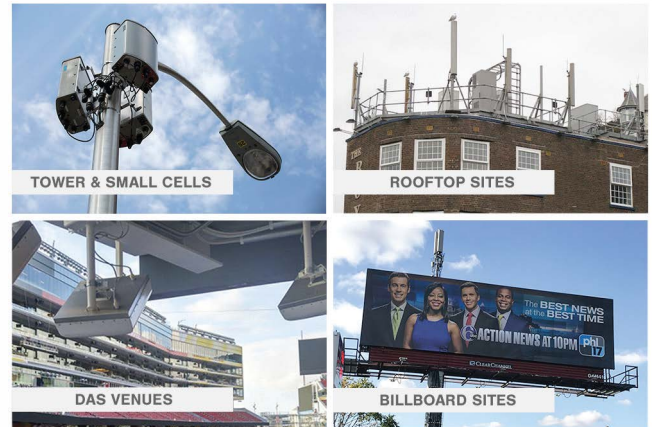
- ✓ Patented technology developed by Waterford; manufactured in U.S.
- ✓ 24/7 RF compliance monitoring delivers round-the-clock protection
- ✓ Delivers immediate alert notification if changes in compliance or RF environment detected
- ✓ Versatile mounting hardware permits quick and easy installation



## Technical Data

Operating Range:	430 MHz to +70 GHz
RF Detection Threshold:	-90 dBm
Power Requirements:	110 - 220V AC, -48V DC
Power Consumption:	18 - 25 W
Operating Temperature:	-40°F to 140°F (-40°C to +60°C)
Network Compatibility:	LTE or CAT5
Dimensions:	Depth 4.1 in (104 mm) Height 10.25 in (260 mm) Width 10.25 in (260 mm)
Weight:	2.5 lbs (1.14 kg)

## Typical Applications



## Monitoring Features

The RFIS dashboard provides clients with access to important alerts in real-time, as well as pertinent site related data including:

- ✓ 24/7 EME compliance reporting
- ✓ Compliance status
- ✓ RF sensor monitoring
- ✓ Mitigation controls status
- ✓ On-demand photos

