

VARIETY:



Maple-Green Mtn. Sugar



SIZE:

H 70' x W 45'

BOTANICAL NAME:

Acer saccharum

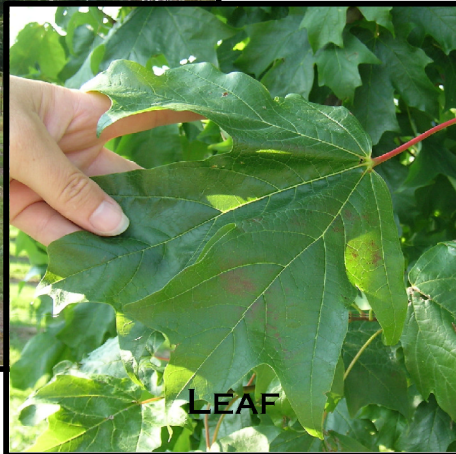
COMMON NAME:

Sugar Maple. Rock maple

ITEM#
ac sa gm



BUD



LEAF



FLOWER SPRING



LEAF COLOR: Thick dark green waxy foliage with good scorch resistance, Excellent orange and red fall color.

HABIT: Upright Oval crown.

GROWTH RATE: Medium, Average 1' per year. Needs acid soil with good drainage.

FRUIT: Samara "Wings"



SEED

CULTURE: Prefers moist well drained oil - sandy loams. Poor resistance to salt. Roots may lift sidewalks. It offers a dense canopy of dark green leaves, producing dark shade. The tree is strong, and if trained properly will not succumb to wind or ice. This is also the same tree that maple syrup is collected from. So long as the soil and full sun conditions are met, this will be a solid performer.



LEAF - FALL

BALDWIN TREE FARM

2232 BALDWIN RD. | FENTON, MI 48430

PH: 248-640-4510

email: info@baldwintreefarm.com

WEB SITE www.baldwintreefarm.com

Photo's By: Kim Frid

OCT., 2013