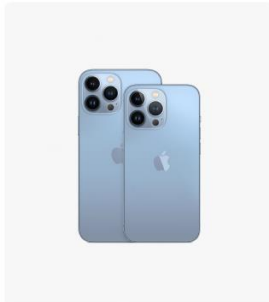


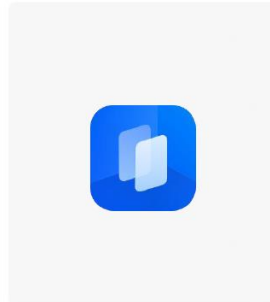
Pre-collection preparation

1. Equipment preparation

Four things you need: mobile phone, Realsee app, tripod, and Galois – an award-winning 3D scanner with LiDAR sensor



Mobile Phone/iPad



APP



Tripod



Realsee Galois

Notes:

1) Galois and mobile phones are recommended to be fully charged. The battery of Galois usually takes about 6 hours to be fully charged, and it can last for 8 hours or so.

(2) Each captured point takes up 40 Megabyte of space to store before 3D tour processing. We recommend you check the available space on your phone before capturing.

You may tap the Settings icon on your phone for this purpose.

2. Mobile phone requirements

At present, all mainstream mobile phones on the market are compatible with Realsee app, which can be downloaded on the Apple App Store or Google Play Store.

iOS 13.0 or later, iPhone 8 or later, and Android 8.0 or later, with memory 4G or above, all work seamlessly with Realsee app.

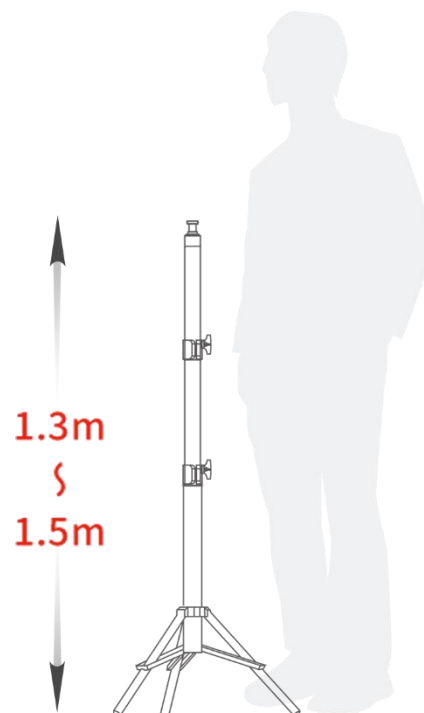
Please note that the configuration on your phone affects the efficiency and user experience of VR capturing.

3. Tripod use and height settings

It is recommended to adjust the height of the tripod to 4.3 - 4.9 feet (or 1.3m - 1.5m) for the best capturing results.

The official kit includes a tripod. It can reach 4.6 feet (or 1.4m) in height when its 3 legs and the center post are fully extended.

Please note that the height of the tripod will affect the height of the view when exploring a 3D tour.



4.App download and Installation

Apple users can download the Realsee app from the App Store.

Android users can do the same from the Google Play Store.

Apple and Android users can also download the Realsee app by scanning the QR code below.



Android



Iphone

Capture

1. Equipment setup and connection

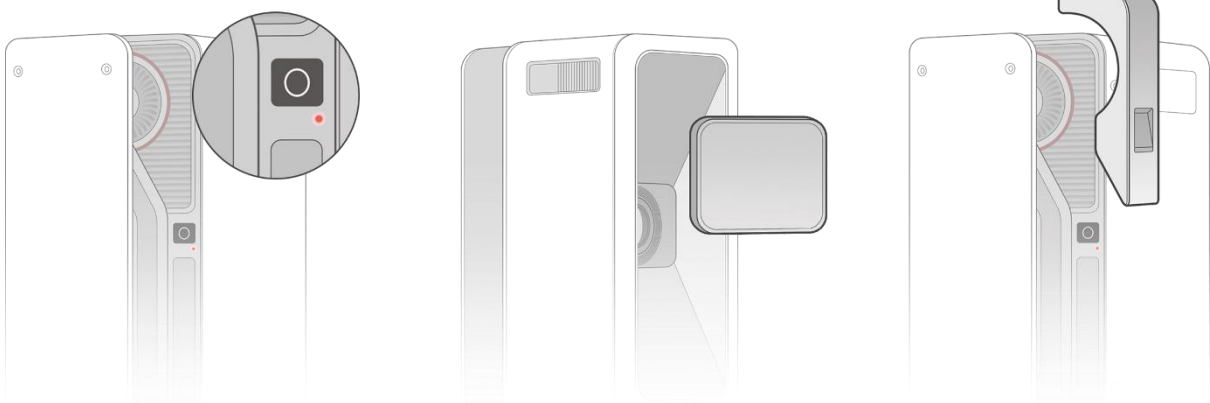
(Long press 3S to turn on the device Galois, and remove the fisheye head cover and LiDAR cover.)

Go to Settings on your phone and select Wi-Fi.

Look for Wi-Fi starting with Realsee-Camera-*****

Connect the phone to Galois through WiFi.

Realsee's WiFi password is 0000000000 (10 zeros)



2.Space organization

Before capturing, tidy up the space.

Ensure the space is as neat as possible to avoid an unpleasant 3D tour presentation. [Click to view the example.](#)

- 1) Organise the space and put away or cover up any private items.
- 2) Ensure the space is well-lit and curtains or blinds are open. A dark environment can make the 3D model less effective.
- 3) Open the doors in the space. (Note: entry doors need to be closed)

3.Planning the capturing path

When capturing, the reasonableness and logic of a point scanned directly affect the stitching of the 3D model and the user experience with the VR tour.

The appropriate placement of a scanned point has everything to do with the flow of exploring a 3D tour. [Click to view the example.](#)

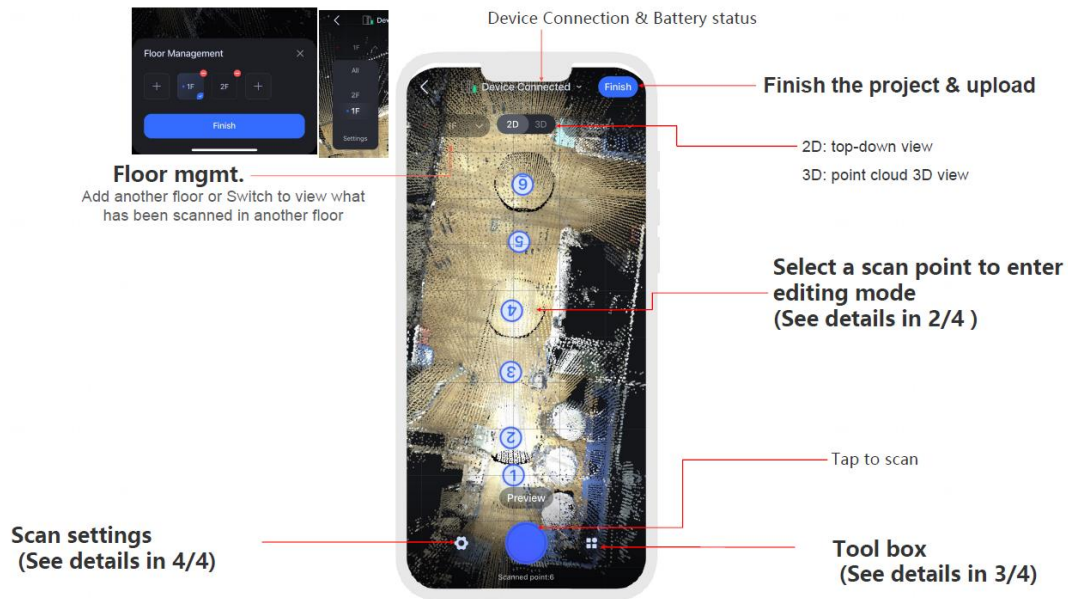
When planning the capturing route, we recommend following a clockwise or counter-clockwise direction to simulate how a 3D-tour user will move around the space.

Note:

The captured points correspond directly to the spots a user navigates in the 3D tour.

1. The first point is recommended to be placed at the space's entrance.
2. When capturing, keep a minimum of 20 cm between Galois and the wall
3. Place a point every 4.9 - 6.6 feet (or 1.5~2m) apart
4. The connection of two spaces must have a point (such as a doorway, passage, or corner)

4.Explanation of operation icons



5.Starting to collect

- 1) Tripod placed on the planned path (how to prepare the acquisition path)
- 2) Galois rotates 360 degrees when scanning

We recommend that the photographer and the people around take cover during the scanning.

(Note: avoid reflections of people in mirrors, same as other reflective objects)

- 3) Click on the "capture key"; the capture will begin.

After finishing the scanning, you can hear the beep from the APP. Please move the tripod to the next point afterward.

Note: It can work in your favor if you adjust the mobile phone's volume to the maximum.

- 4) Repeat the above operations until the space acquisition is complete.

6.Finish scanning and upload

When you finish the scanning, click "Finish" at the top right corner of the app screen.

Enter the project name, upload the file and generate the VR automatically.

The length of time spent on a VR uploading and processing is related to two key factors.

First is the number of captured points, and second, the number of projects currently being processed in the system.

When the VR processing is completed, your phone will receive a notification.

(It is recommended to open the notification in the phone settings for Realsee VR app)

7.Sharing

Once your VR project is published online, you can copy and paste its link and share it on any social media such as Facebook, Instagram, and Twitter.

For more information, please click [this](#).