

NASTON ENGINEERING
NIGERIA LIMITED



Naston Engineering

Who we are:



- Naston Engineering Nigeria Ltd. is a Nigerian engineering and contracting company.

Over the Last 20 years we have consistently delivered top quality solutions and services to meet our clients needs viz: in the **Water , Wastewater and construction Industry .**

Incorporated : 19th June 1998

Registration number :336753

HEAD OFFICE

FUNCTIONALITIES

- ❖ Administration
- ❖ Finance
- ❖ Human Resource
- ❖ Lead Project Management
- ❖ Contract management
- ❖ Engineering
- ❖ Procurement & Expediting
- ❖ Quality Management
- ❖ Health Safety and Environment
- ❖ External Interface Management
- ❖ Nigerian Content Development
- ❖ Project Controls Management
- ❖ Interface Management (External & Internal)
- ❖ Logistics
- ❖ Security



WHAT WE DO

CONSTRUCTION OF UTILITIES

INFRASTRUCTURE PROJECTS

WATER

SEWAGE AND WASTEWATER EFFLUENT SYSTEMS

ENERGY

METERING AND REVENUE MANAGEMENT



Naston Engineering



SERVICES

OPERATIONS AND MANAGEMENT OF WATER SYSTEMS

OPERATIONS AND MANAGEMENT OF SEWAGE AND WASTEWATER EFFLUENT SYSTEMS

SOLID WASTE MANAGEMENT

OUR
CLIENTS-
SELECTED



Nigerian Bottling Company Ltd RC 902
(A member of Coca-Cola Hellenic Group)



QUICK REFERENCES



TESTIMONIALS

- <http://lagoswater.org/lwcweb-lauch.php?p=1021>
- <http://thenationonlineng.net/awara-dam-provide-6-7million-litres-water-ondo/>
- http://www.worldbank.org/projects/procurement/procurementsearch?lang=en&qterm=&supp_id=159910&supp_name=NASTON%20ENGINEERING%20LIMITED&source=contracts

- *NEW PROJECTS
/RECENTLY AWARDED
PROJECTS*

List of New Projects

1. ENGAGEMENT AS THE TECHNICAL CONTRACTOR FOR THE REHABILITATION AND EXPANSION OF ISASHI WATER SUPPLY SCHEME – PHASE 1

- Client : Lagos State Government
- Awarded: December 2021
- Completion Period : 9 Months
- Amount :#2.3 Billion Nigerian Naira (USD 5.84 Million)

2. Contract for Construction of Ota Water Supply Scheme In Ogun state,

- Client : Federal Government of Nigeria
- Awarded: November 2020
- Completion Period : 24 Months
- Amount :#3.9bn (USD 960 Million)

2. Contract for Rehabilitation of Water Treatment Plant At Abraham Adesanya Estate In Lagos state,

- Client : Lagos State Government –Ministry Of Housing
- Awarded: October 2020
- Completion Period : 6 Months
- Amount :#240m

3. Contract for Expansion of Sewage Treatment Plant at MTN Head office Falomo, Lagos state,

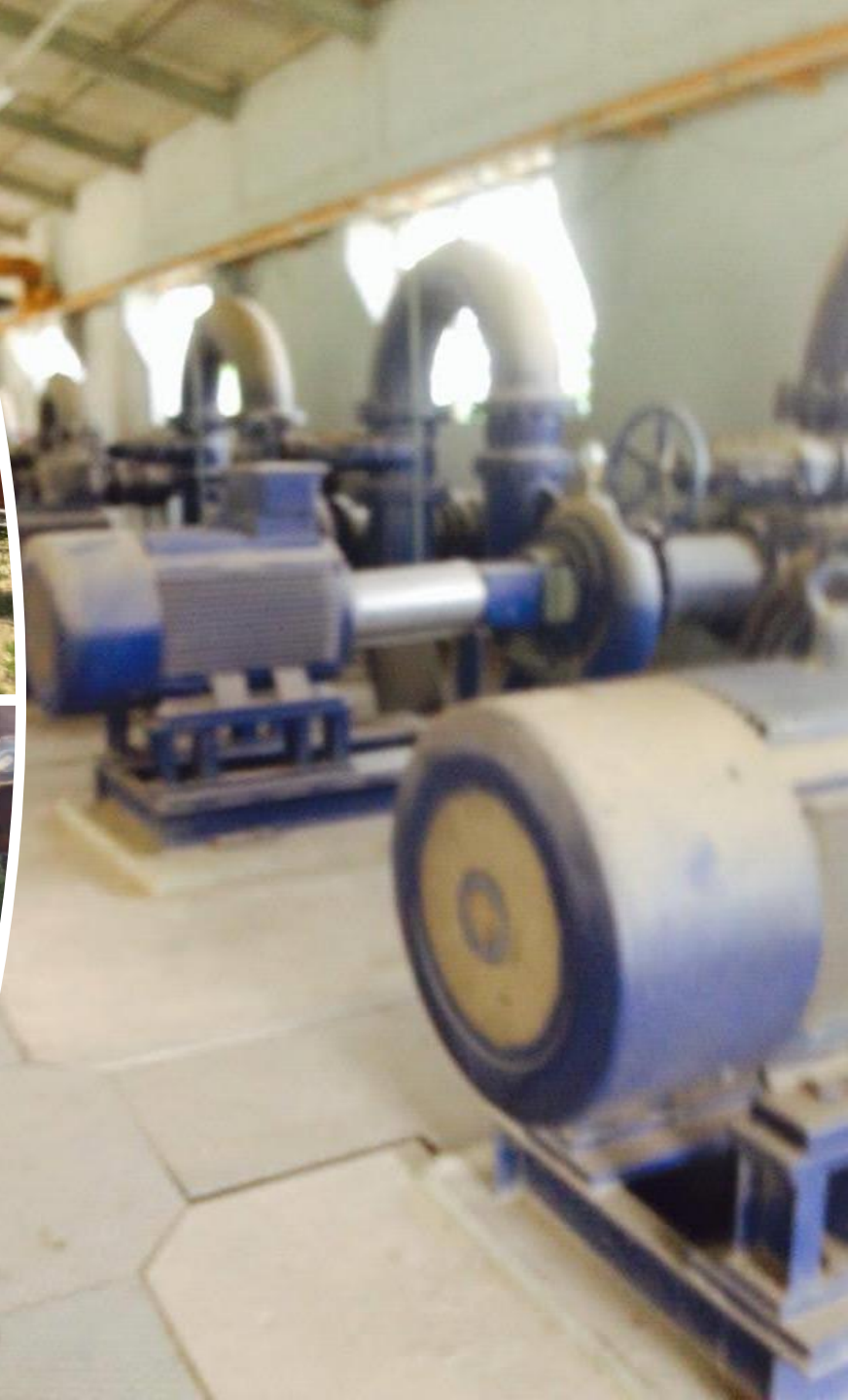
- Client : MTN Communications Ltd
- Awarded: June 2020
- Completion Period : 9 Months
- Amount :#49m

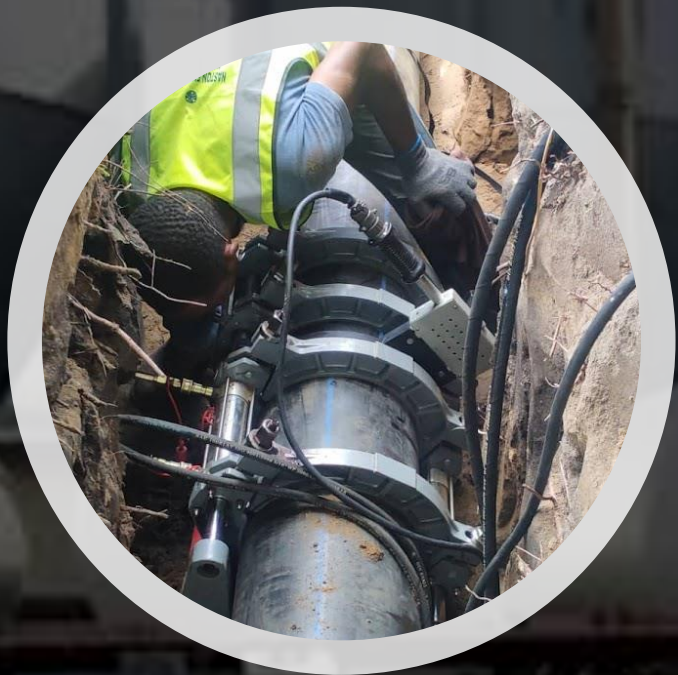
ENGAGEMENT AS THE
TECHNICAL CONTRACTOR
FOR THE REHABILITATION
AND EXPANSION OF ISASHI
WATER SUPPLY SCHEME –
PHASE 1

- Project Scope

-Phase 1 - Rehabilitation of
Water Treatment and
Restoration of production
capacity to 18 Million Litres
Per day .

- EPC Engineering and
Design for Expansion of the
scheme to 54 Million Litres
per day





Phase 1 - Rehabilitation of Water Treatment and Restoration of production capacity to 18 Million Litres Per day .

- Rehabilitation Of the Electrotechnical works at the Treatment Plant
- Rehabilitation and construction of new Transmission and distribution mains .



Proposed Ota Water Treatment –Typical

- The Proposed Ota Water Expansion Project shall have an installed capacity of 15,000m³/day -
- Access to Potable water – 250,000 persons based on 60 Liter per capita

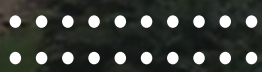


On-Going
Construction
works of
Transmission and
secondary
Pipeline

- **OTA WATER SUPPLY PROJECT**



- *CONSTRUCTION OF
WATER TREATMENT
WORKS*



Construction of Otta-Ikosi 4MGD Regional Water Supply Scheme and pipeline Reticulation.

- **Client:** Lagos State Govt.
- **Status:** completed,2016
- **Capacity :** 18 million Litres Per Day Water works
- **Population** > 300,000 person
- **Catchment :** 15 communities
- **STEEL ERECTION :** > 2000 METRIC TONNES
- **PIPE INSTLLATION :** > 100KM





Naston Engineering

PROJECT LOGISTICS-
Over 200 X 40FT
Containers



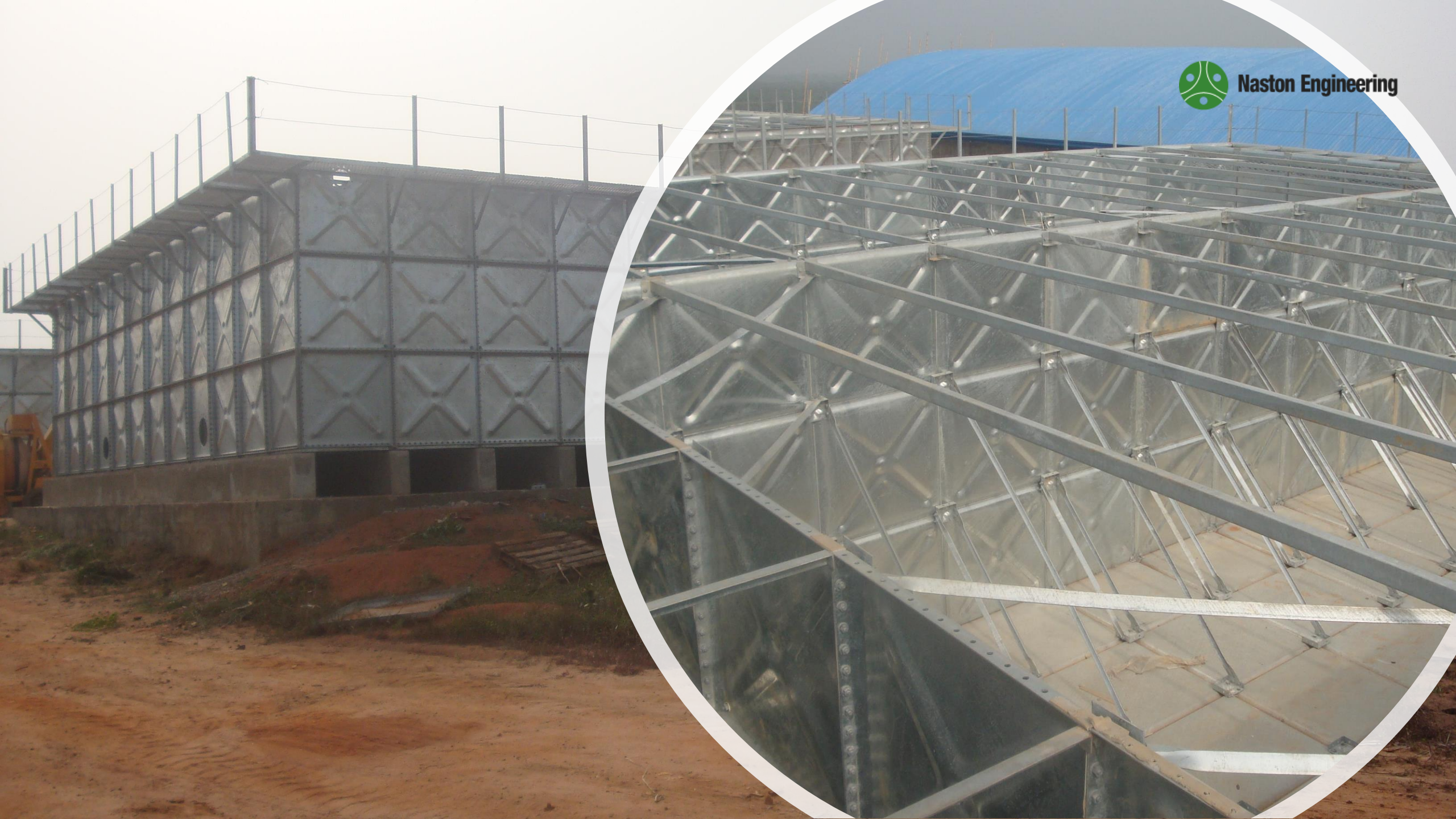
Construction of
450m walkway
bridge on the flood
Plain

03/26/2011 11:57 AM



ERECTION AND ASSEMBLY OF PRE- FABRICATED STORAGE TANKS






Naston Engineering



Tank Assembly and Erection



ERECTION & ASSEMBLY OF PREFABRICATED ELEVATED STORAGE TANKS AND STANCHIONS

Construction of 18
Million Litres Per
day Water
Treatment Plant



ISLAMIC BANK FUNDED PROJECT

Completed 2019

- ZARIA BOOSTER STATION PROJECT
- CONSTRUCTION OF BOOSTER STATION AT SAMARU, PALLADAN AND TUNDUN WADA



Kaduna State Government.

ISLAMIC BANK FUNDED PROJECT
ZARIA WATER SUPPLY PROJECT
CONSTRUCTION OF BOOSTER
STATION



EPC – CONTRACT

Construction of 4Nos 2Million Gallon Per Day Mini Waterworks

@ Magodo, Epe, Ajangbadi
, Isehri-Oshun

- Client: Lagos State Govt.
- **Scope of Works of Each of the 4 Sites:**
 - Drilling of 4Nos Deep Boreholes,
 - Booster Pumping System Installed,
 - Aeration/Sedimentation Tank Fabricated and Installed,
 - Filtration System- 4 pressure filters of $\varnothing 3m$ and 3m height,
 - Clear Water Tank (1,000m³) Fabricated and Installed,
 - Elevated Tank (225m³) Fabricated and Installed,
 - Power Generation System,
 - Operations Building,
 - 5km of Distribution Pipeline of different sizes ($\varnothing 110mm$ to $\varnothing 315mm$).
 - Installation of MCC Control Panel
 - Etc.





FCT ABUJA



Naston Engineering

- **Works executed within this period are viz:**
- Rehabilitation of the Lower Usman Dam Intake .
- Rehabilitation of the Lower Usman Dam Phase 1 (5000m³/hr)Water Treatment Plant.
- Rehabilitation of the booster pumping stations and storage reservoirs .
- Extension - Densification of the Pipe line Distribution Networks for Karu satelite Township.
- Supply and installation of Prepayment Water Meters for Karu and Gwarinpa



Overhauling/Upgrading of the FCT Water Board's Pumping Stations.

Client: FCT, Abuja

Status: Completed



- The Scope of the Project Includes:
- Pump and Power Upgrade of the booster Stations
- Rehabilitation and Complete overhauling of the Electromechanical Equipment of the Booster Pumping Station,
- Supply and Installation of Pumps Ranging from 11Kw to 30Kw,
- Supply and Installation of Electricity Generating Set,
- Installation of Bulk Flow Meter



Extension densification of karu Satellite Town
Client: FCT, Abuja
Financier: World Bank

- The Scope of the Project Includes:
- Laying of over 40Km of PVC and Ductile Iron for Transmission and Distribution Pipeline Network



Extension densification of karu Satellite Town

Client:FCT, Abuja

Financier:World Bank

- The Scope of the Project Includes:
- Laying of over 40Km of PVC and Ductile Iron for Transmission and Distribution Pipeline Network



DELTA STATE GOVERNMENT
GREATER WARRI – EFFUNRUN
WATER SUPPLY PROJECT



- Phase 1: Installation works of outstanding distribution system and house connection (46.88km DI Pipes)
- Phase 2: Installation of 56.48km balance distribution pipeline (DI)



OGUN STATE CONTRACT FOR THE PROCUREMENT OF PUMPSETS



- PROJECT: Procurement Of Pump sets
- COUNTRY: Nigeria
- CLIENT: Ogun State Water Corporation
- DESCRIPTION: Procurement Of Pumpsets
- STATUS: In Progress.



OGUN STATE GOVERNMENT Replacement of Papaplanto - Ifo Transmission Mains – Lot1 (World Bank Project)



Naston Engineering

- **COUNTRY:** Nigeria
- **CLIENT:** Ogun State Water Corporation.
- **DESCRIPTION:**
 - Replacement of Transmission Mains such as Supply and installation of 10,000m 250mm D.I Pipe 25bar with fittings.
 - Supply and installation of 700m D.I Pipe 16bar with fittings.
 - Supply and installation of various size of electro-magnetic flow meters
 - Supply and installation of 3500m DN 110mm, Class 12bar uPVC with all the fittings and Pressure testing, Flushing and Chlorination of all pipelines.
- **STATUS:** 80% completed



ONDO STATE GOVERNMENT
Construction of Re-designed Intake/ Rehabilitation of Existing intake structure at Oke-Igbo Water Scheme.

- The Scope of the Project Include:
- Construction intake weir across
- Oni river to impound raw water.
- Refurbishment of the intake building.
- Replacement of the Raw water
- Intake pipe works .
- Installation of New intake pumps .



ENUGU STATE GOVERNMENT

Supply of Vertical Driven Pumps for Ajalli-Owa Head works.

Financier: World Bank



- The Scope of the Project Include:
- Procurement of 4Nos Vertical Line Driven Pumps for Raw Water (580m³/hr @178mH)
- Procurement of 4Nos Vertical Line Driven Pumps for Clear Water (1070m³/hr @150mH)



ENUGU STATE GOVERNMENT

Replacement of the Electrical Panels for the
New Ajalli-Owa Intake and High lift pumps
Financier: World Bank



- The Scope of the Project Include:
- Supply and Installation of Motor Control Panel (MCC) with Soft Starters for Intake Station,
- Supply and Installation of Motor Control Panel (MCC) with Soft Starters for High Lift Station
- Supply of Spare Parts.



ENUGU STATE GOVERNMENT
Rehabilitation of Enugu Metropolis Water
Distribution Network.

(Lot 1, & Lot 2)

Financier: World Bank

- The Scope of the Project Include:
- Procurement of $\text{Ø}300\text{mm}$ and $\text{Ø}450\text{mm}$ Ductile Iron Pipes
- Procurement of $\text{Ø}100\text{mm}$ and $\text{Ø}200\text{mm}$ UPVC Pipes
- Laying of Pipes in a densely Built up Area
- Reclamation of Right of Ways by Relocating Utilities such as Underground Electrical Cables, Telecoms Cable, Transformer etc.,
- Reconnection of New Pipe Network With Supply Mains, Testing, Flushing and Chlorination of New Pipeline,



ONDO STATE GOVERNMENT
Rehabilitation of Awara Water Supply
scheme
Construction HDPE rising mains

- INSTALLATION OF HDPE PIPES
315mm HDPE pipes
Installation in Awara Ondo State



-
-

CONSTRUCTION OF FLOATING PONTOON BARGE

- *OIL AND GAS
CONSTRUCTION AND
FABRICATION
WORKS*



FABRICATION OF SPOOLS



Welding of 48" pipes

- DANGOTE REFINERY PROJECT



HOLIDAY DETECTION — SWEEPING OF JOINTS AND REPAIR PATCHES



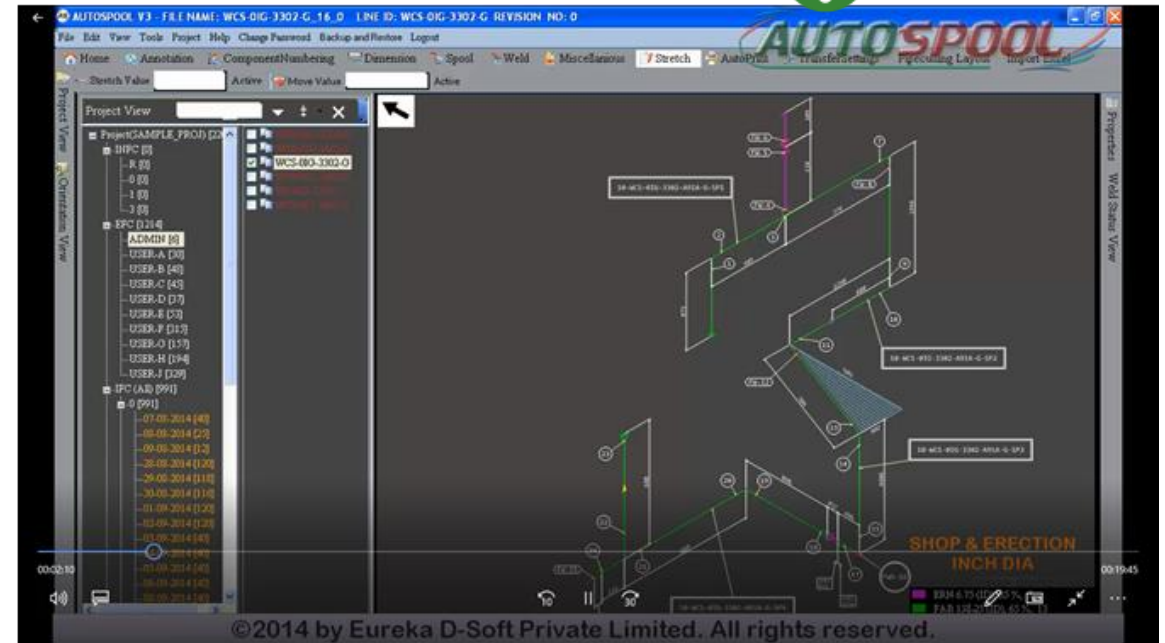
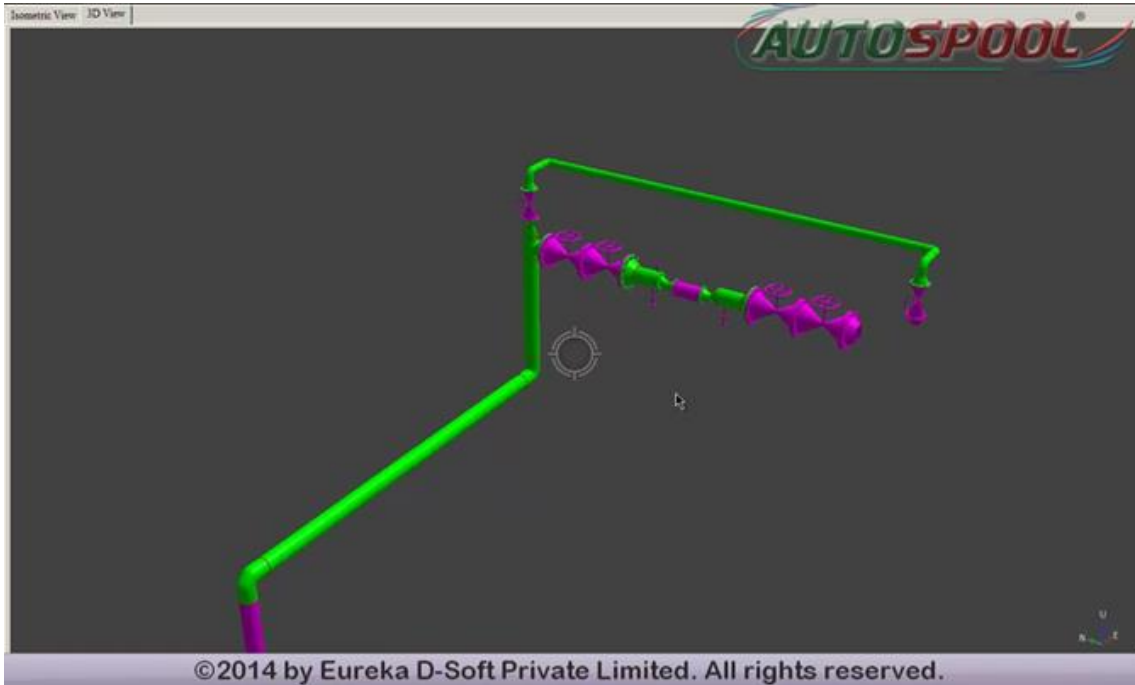
PIPELINE COATING

PIPING AND PIPELINES CONSTRUCTION

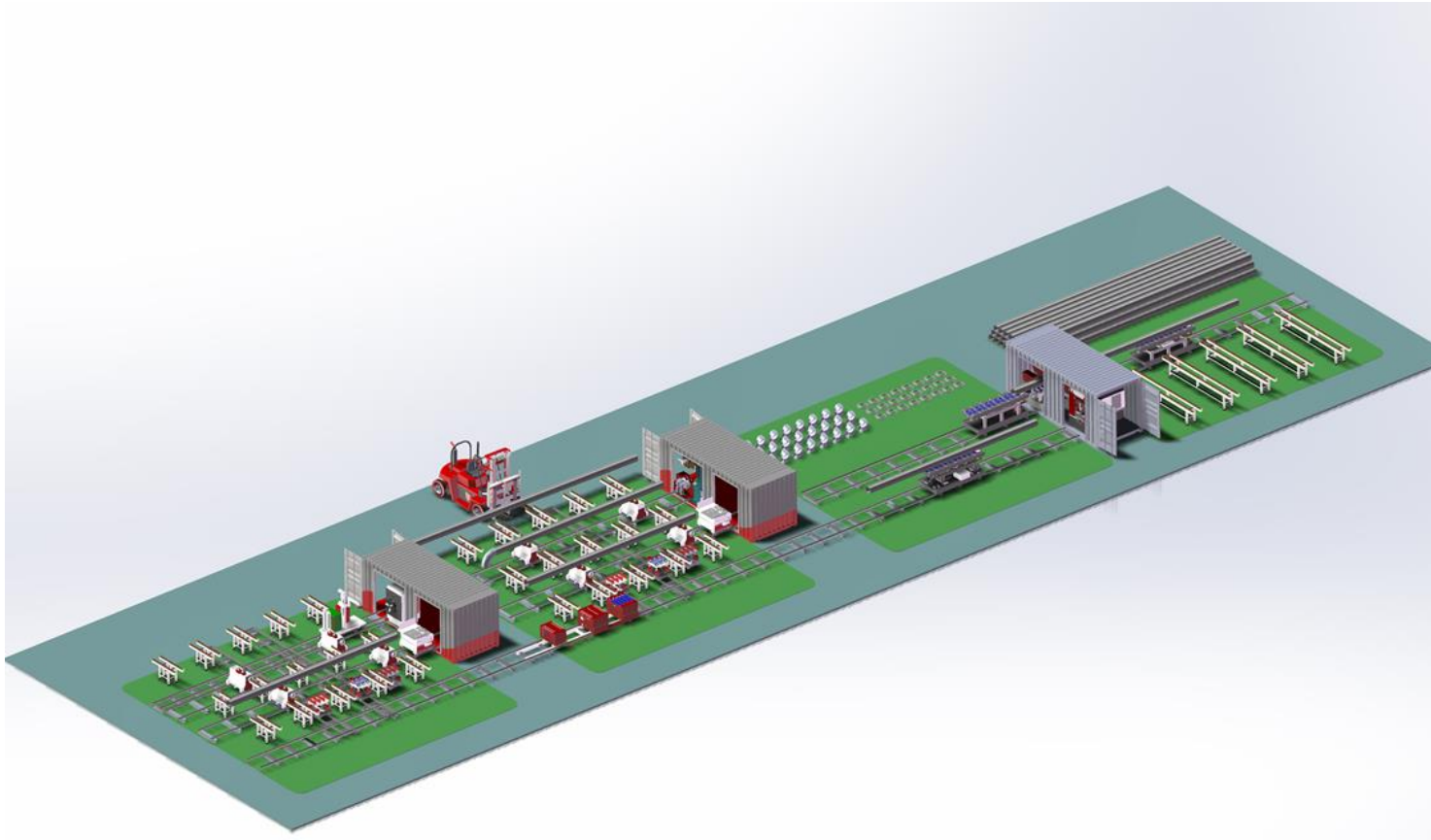




PIPE LIFTING OPERATIONS

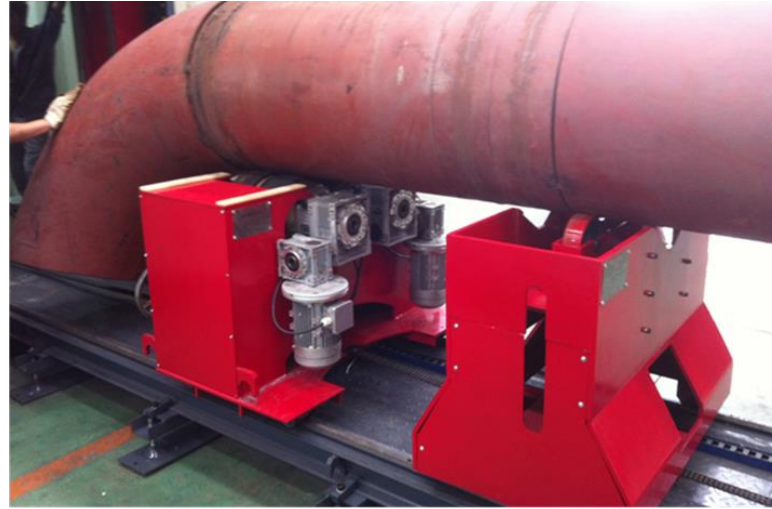


AUTOSPOOL –PROPRIETARY SOFTWARE SUITE FOR ENGINEERING , SPOOLING ,MEASUREMENT AND MONITORING OF PIPING AND PIPELINE FABRICATIONS.



MOBILE FABRICATION WORKSHOP

- 600-INCH-DIA PER DAY
MODULAR FABRICATION
WORKSHOP
PURPOSE BUILT FOR EASE
OF FABRICATING SPOOLS
RANGING FROM 2" TO 32"



MOBILE FABRICATION EQUIPMENT :
CAPABILITY FOR SPOOL FABRICATION – CS/SS
WELDING PROCESSES- GTAW,SAW AND FCAW.

SPOOL FABRICATION



Naston Engineering



FABRICATION OF
96" x 84"
ECCENTRIC
REDUCER



TIE-IN OF 96" ECCENTRIC REDUCER
TO 84" PIPE LINE

FABRICATION AND INSTALLATION OF
REINFORCEMENT PAD



- CONSTRUCTION OF 96" SCH .80 PIPELINE FOR COOLING WATER SERVICE



FIELD JOINT COATING

Meeting client's expectations



FABRICATION OF MITRES



Naston Engineering



PICTURE
SHOWING –
FIELD
FABRICATION
FABRICATION OF
90° Mitre Bends



Naston Engineering

PIPELINE INSTALLATION

- Installation of 96" pipes



PIPE LINE INSTALLATION

INSTALLATION OF COOLING WATER
PIPELINES





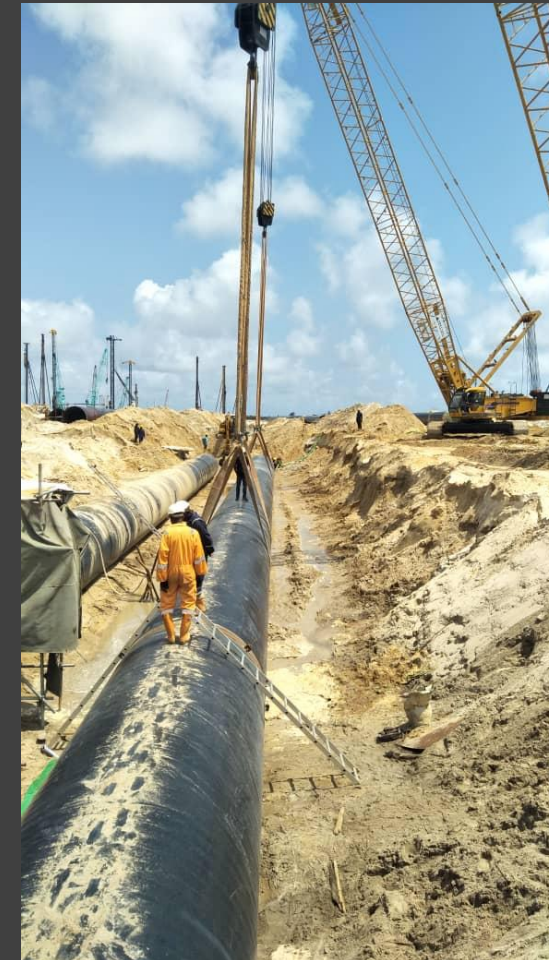
84" Pipeline Installation



PIPELINE
INSTALLATION 84"



Naston Engineering





PIPELINE LOWERING AND TIE-IN OPERATION



Naston Engineering



- ***ELECTRICAL
CONTROLS AND
INSTRUMENTATION
SERVICES***

NICON TOWN PROJECT

SCOPE:

- 1. Connection to the Chevron /Lekki 33Kv Line
- 2. Construction and Installation of 1no 7.5MVA 33/11kv transformer and overhead protection accessories incl gang isolator, J & P fuses, lightning arrester, effective earthing for the new Sub-Station.
- 3. Testing and commissioning



OTTA IKOSI PROJECT

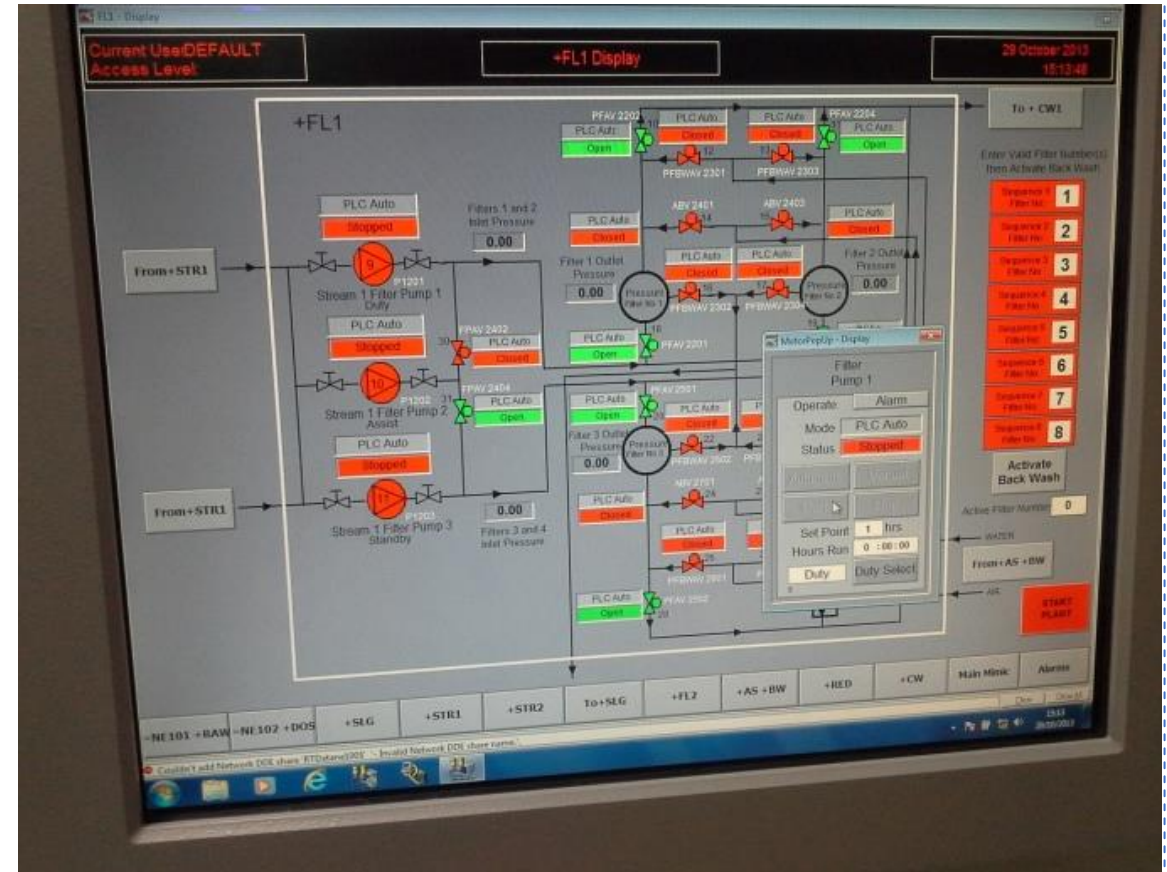
SCOPE

- Connection to 33kv PHCN Power Supply.
- 2. Supply, Installation and Commission of 1.5MVA, 33KV/415V transformer Sub Station complete with the installation of 33kV Schneider indoor breaker for protection and switching.
- 3. Design, Construction and Installation of Motor Control Panel with integrated 4nos 110kw Altistart soft Starters. The MCC is integrated with a HMI -SCADA/PLC for the Plant Automation .
- 4. Supply and installation of 3nos 500kVA/415V Perkins diesel generator complete with
-



PROJECT : OTTA IKOSI PLC SCADA SYSTEM

- The project consists of an headwork that takes water from an intake river 1.5km away.
- The treated water is to be pumped to nine remote villages. The commnication is through optic fiber to the intake, but radio frequency to the remote stations.
- The SCADA system was design to monitor water quality in the production trains as well as water levels at the remote locations and via the SCADA .
- The operation at the headworks and the remote stations are fully automatic with manual override .



Naston Engineering

OTTA IKOSI PROJECT

PROJECT SCOPE

- Installation and Commissioning of Power Sub Station at Agbowo
- 1500KVA – 33/0.415KV TRANSFORMER
-



Naston Engineering



PRESSURE REGULATING SYSTEMS

Installation and commissioning of pressure regulating systems .



Naston Engineering

PROJECT :UPGRADE OF SCADA PLC SYSTEM @ ISASHI LAGOS

Scope

- Develop/write and upgrade to New PLC programmes (Water Treatment Plant & Raw Water Intake)
- PLC Hardware
- PLC Software
- All PLC Accessories
- SCADA Hardware and Software
- Sensors and Actuators
- Transmitters



PROJECT ISASHI POWER



PROJECT SCOPE :

Installation and commissioning of 1.6MVA DG Power Generating System.

- 2 X 800KVA DG Generators with synchronization system and Balance of Plant.



Naston Engineering

PROJECT :OVERHAULING & UPGRADE OF BOOSTER PUMPING STATION AT MAITAMA & ASOKORO.



Scope

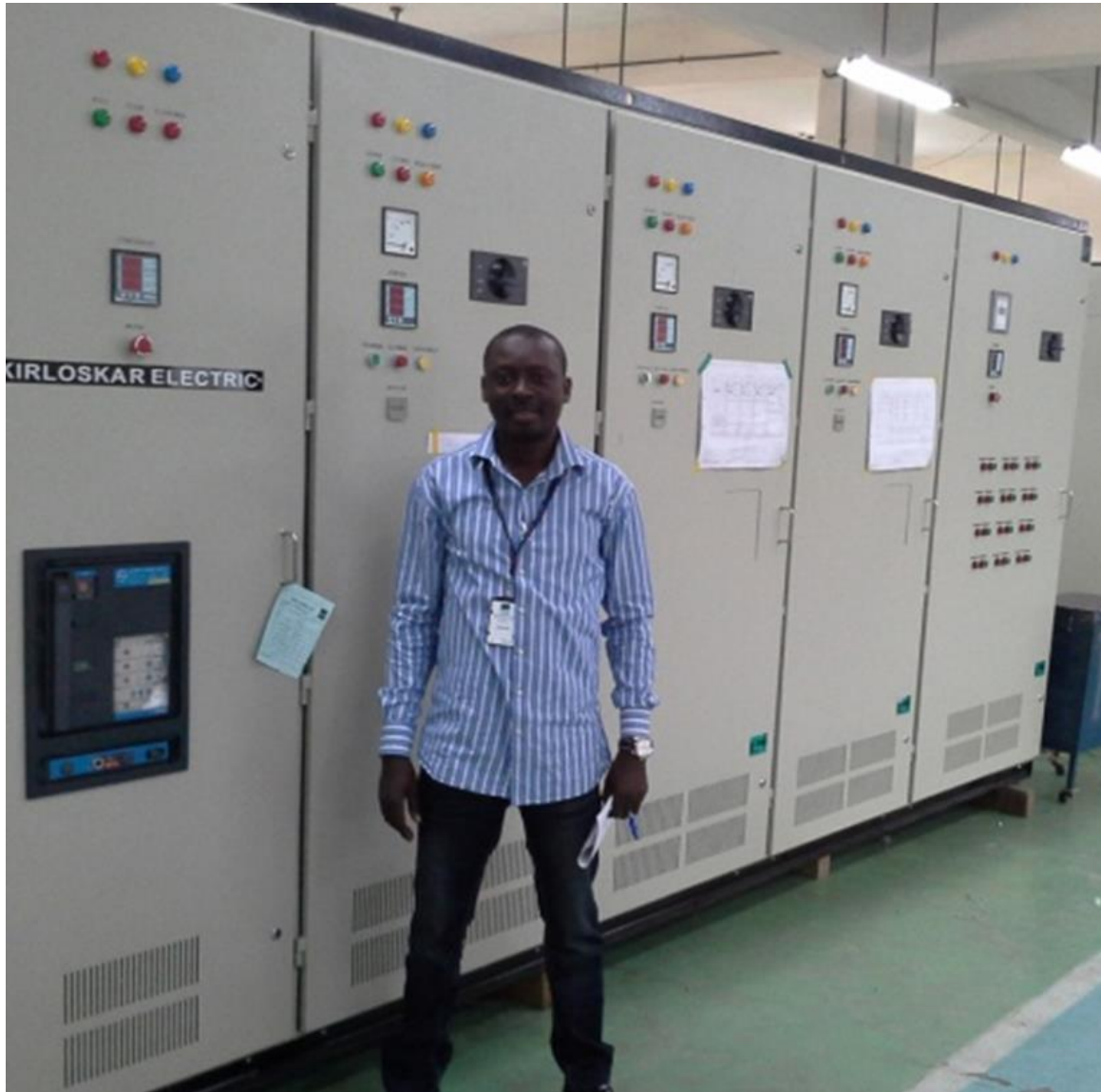
- 1. Rehabilitation of the 33kv overhead transmission Line.
- 2. Rehabilitation of the 500kVA, 33/0.415kV transformer Sub-Stations including Testing and replacement of faulty about 850mtrs low tension pvc/swa/pvc cables within the water works.
- 3. Supply and installation of 1no 800kVA/415V and 500kVA/415V Perkins diesel generators as standby operation of the plant.
- 4. Supply and Installation Of MCC Panel for the treatment plant including installation of 4nos 110kw softstarters for the clear water pumps



Naston Engineering

EPC DESIGN AND CONSTRUCTION OF
3.3KV MEDIUM VOLTAGE MCC
PANELS FOR AJALI WATERWORKS

AJALAI OWA MCC PANEL



AWARA PROJECT

- Repair and Restoration of Ikare – Awara 33kva Transmission Lines
- Repair of Awara Water Works 33/415 V SUB STATION.
-



Naston Engineering



CONSTRUCTION
OF 4 NOS
MINI WATER
SCHMES IN LAGOS



- EXTENSION OF GRID POWER SUPPLY AND CONSTRUCTION OF 11/415 V SUB STATION.



Naston Engineering

PROJECT : LAGOS STATE UNIVERSITY,OJO



- EXTENSION OF GRID POWER SUPPLY AND CONSTRUCTION OF 11/415 V SUB STATION.
-

- *OPERATIONS AND
MANAGEMENT OF
WATER TREATMENT
SYSTEMS*

OPERATIONS AND MAINTANANCE TRACK RECORD

NICON TOWN ESTATE ,LEKKI

ROYAL GARDENS ESTATE ,AJAH

SOUTHERN SUN ,HOTEL IKOYI

LAGOS STATE UNIVERSITY , OJO

LAGOS STATE UNIVERSITY ,EPE

NIGERIAN BOTTLING COMPANY

- IKEJA
- ASEJIRE
- KANO
- ABUJA
- PORT HARCOURT
- OWERRI
- MAIDUGURI
- BENIN

NICON TOWN ESTATE

- Process – Potable Water Treatment
- Plant Capacity – 50m³/DaY
- Scope Of Service – Design Build, Operations and Management
- Status – Closed handed over 2017
- Location - Lekki Pennisula, Lagos State





NICON TOWN ESTATE.



NICON TOWN - QUALITY ASSURANCE WATER ANALYSIS

1004 –ESTATE REDEVELOPMENT

- Process – Potable Water Treatment
- Plant Capacity – 75m³/DaY
- Scope Of Service – Refurbishment, Operations and Management
- Status – Closed handed over 2016
- Location - Victoria -Island,Lagos State





1004 Water Treatment Plant.



1004 Estate- Pumping systems.

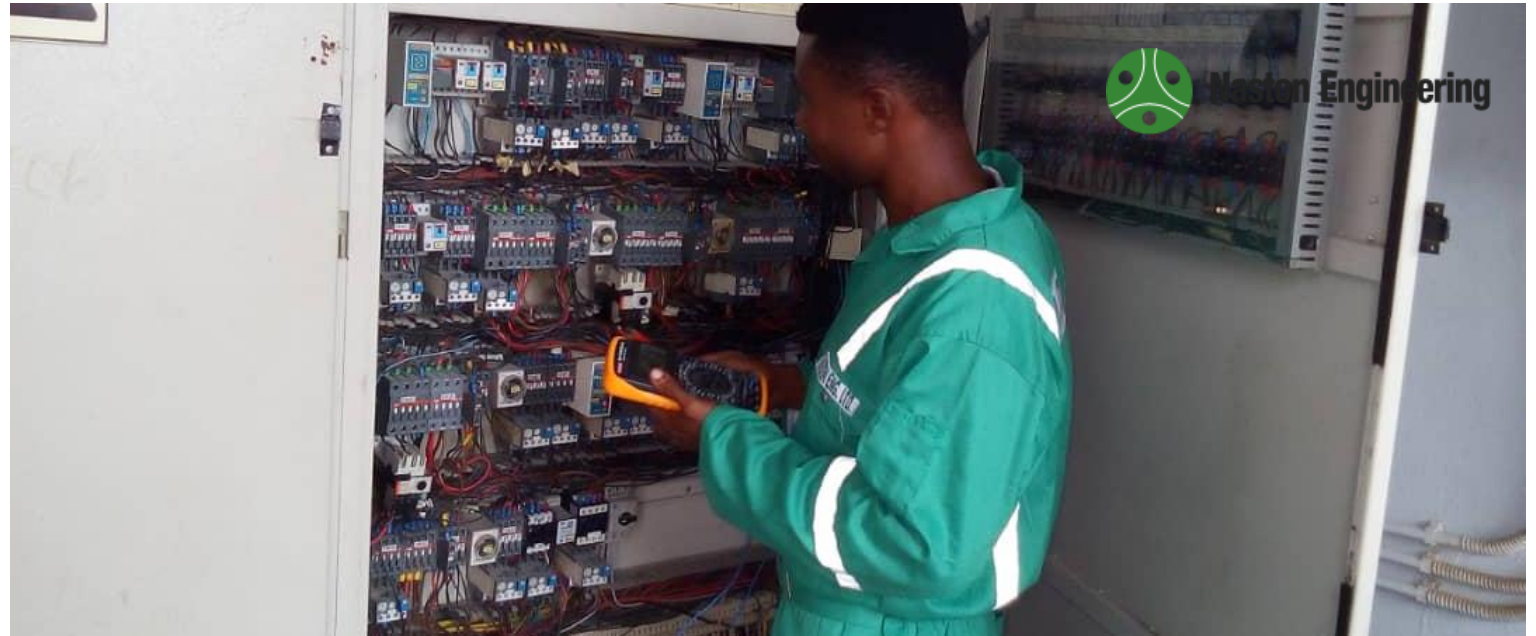


Coca-Cola Bottler in Nigeria
NIGERIA BOTTLING COMPANY
– CHALLAWA PLANT ,KANO

- Process – Effluent Treatment
- Plant Capacity – 1800m³/DaY
- Scope Of Service – Operations and Management
- Status – Active Commenced 2017
- Location - Challawa,Kano State

NIGERIA BOTTLING COMPANY – KANO PLANT





NIGERIA BOTTLING
COMPANY – CHALLAWA
PLANT ,KANO.

Coca-Cola Bottler in Nigeria

NIGERIA
BOTTLING
COMPANY –
IKEJA
PLANT, LAGOS



- Process – Effluent Treatment
- Plant Capacity – 2200m³/Day
- Scope Of Service – Operations and Management
- Status – Active Commenced 2017
- Location - Ikeja ,Lagos State



Coca-Cola Bottler in Nigeria NIGERIAN BOTTLING COMPANY –IKEJA PLANT

- Plant Operations

NIGERIAN BOTTLING COMPANY –IKEJA PLANT

- PLANT OPERATION
- WATER ANALYSIS
- EQUIPMENT MAINTENANCE





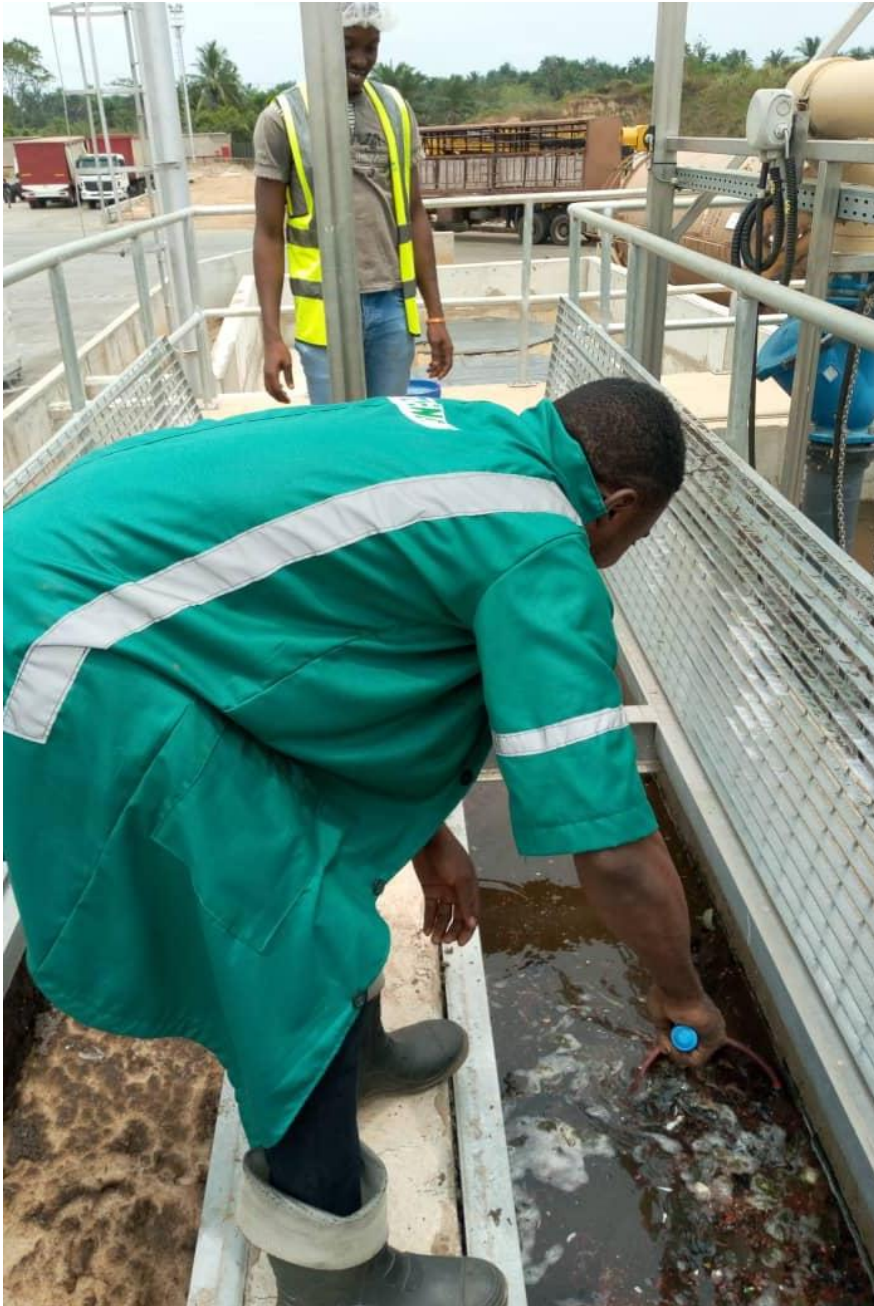
NIGERIA –BOTTLING COMPANY –IKEJA

HOUSE KEEPING ACTIVITY



Coca-Cola Bottler in Nigeria
NIGERIA BOTTLING COMPANY
– ASEJIRE PLANT

- Process – Effluent Treatment
- Plant Capacity – 1800m³/DaY
- Scope Of Service – Operations and Management
- Status – Active Commenced 2017
- Location - Asijere ,Oyo State



NIGERIA BOTTLING COMPANY ASEJIRE PLANT

- HOUSE KEEPING ROUTINE



NIGERIAN BOTTLING COMPANY – ASEJIRE PLANT

- EQUIPMENT MAINTENANCE



Coca-Cola Bottler in Nigeria
NIGERIA BOTTLING COMPANY
– ABUJA ,PLANT

- Process – Effluent Treatment
- Plant Capacity – 1800m³/Day
- Scope Of Service – Operations and Management
- Status – Active Commenced 2016
- Location - Abuja ,FCT



NIGERIA BOTTLING COMPANY – ABUJA
PLANT
- PLANT OPERATION'
- EQUIPMENT MAINTENACE



Coca-Cola Bottler in Nigeria

NIGERIA BOTTLING COMPANY –PORT HARCOURT
,RIVERS STATE

LAGOS STATE UNIVERSITY – OJO CAMPUS

- Process – Drinking Water Treatment
- Plant Capacity – 190m³/hr
- Scope Of Service – Design Build Operations and Management
- Status – Closed (5years)
- Location - Ojo ,Lagos State



LAGOS STATE UNIVERSITY – EPE CAMPUS

- Process – Drinking Water Treatment
- Plant Capacity – 190m³/hr
- Scope Of Service – Design Build Operations and Management
- Status – Closed (5years)
- Location - Epe ,Lagos State



CONTACT DETAILS



ADDRESS :

WATER HOUSE –IPONRI ,
1 Afric Road, Off Funsho
Williams Avenue –Iponri
Lagos,Nigeria.



Tel: +234-803-303-4927



Naston Engineering



Email: info@nastonnigeria.com