



Anglia Ruskin
University

London



Prospectus

2019/20

lca.anglia.ac.uk

Welcome

Thank you for your interest in Anglia Ruskin University London. I very much hope our University will suit your needs and requirements, and will exceed your expectations of what a University can offer.

Anglia Ruskin University is a progressive university, breaking into the top 350 educational institutions in the World in 2017*. Our fantastic academics will link theory with practice in a friendly and supportive environment; just one of the reasons that our students have recorded some of the highest satisfaction rates across the University.

With a Campus in the very heart of the City of London offering you unprecedented access to a host of potential employers and careers, ARU London is the perfect place for you to build the skills and gain the knowledge which will propel you to a successful career.

At ARU London we offer a range of Undergraduate and Postgraduate degrees specialising in Business, Law and Healthcare related courses, all delivered alongside our Employability Scheme to ensure that you graduate with an excellent degree and the employability skills to achieve your full potential.

Choosing the right university is one of the most important decisions you will make and we invite you to find out more about us through this prospectus and attending one of our Open Days, this is where you will really discover first-hand the passion and enthusiasm that is embedded throughout ARU London.

This is a perfect time to study at ARU London, and I look forward to welcoming you.



David Sexton
Principal

*The Times World University Rankings 2017

Contents

Anglia Ruskin University

London, Your City	6
London, Your Campus	8
Open Days	10
Student support	12
About us	14
What makes us different?	16
Your future	18
What to expect	20
Accommodation	22

Undergraduate courses

Undergraduate courses	24
Business and Events Management BSc (Hons)	26
Business and Hospitality Management BSc (Hons)	28
Business and Tourism Management BSc (Hons).....	30
Finance and Accounting BSc (Hons)....	32
International Business Management BSc (Hons)	34
Business and Human Resource Management BSc (Hons).....	36
Business and Law BSc (Hons)	38
Business & Marketing BSc (Hons)	40
Law LLB (Hons).....	42
Law and Accounting BSc (Hons).....	44
Business and Healthcare Management BSc (Hons).....	46
Health and Social Care BSc (Hons)	48
Extended Undergraduate Degree Course	50

Postgraduate courses

Postgraduate courses	52
Master of Business Administration (MBA) - International	54
Master of Business Administration (MBA) - Health and Social Care	56
Master of Business Administration (MBA) - Hospitality Management	58
MSc International Project Management	60
MSc International Marketing	62

How can we help?

Entry requirements	64
Applying to ARU London	66
Student finance and fees / scholarships	68
International Students	70

We have made all reasonable efforts to ensure that the information in this prospectus is correct at the time of print in May 2019. Considerable care has been taken in the preparation of this prospectus to ensure its accuracy at the time of going to press. If, however, you feel that any of it is inaccurate or misleading, you should write, stating the detail of your complaint, to: Head of Marketing, ARU London, 19 Charterhouse Street, London, EC1N 6RA. For the latest and most up-to-date information please visit our website at - www.lca.anglia.ac.uk





Anglia Ruskin University London

The British Museum

The Royal Court of Justice

Central Criminal Court (The Old Bailey)

The Bank of England

30 St Mary Axe (The Gherkin)

St Paul's Cathedral

20 Fenchurch Street (The Walkie-Talkie)

The Tate Modern

The Shard

Tower of London

Tower Bridge

London Eye

House of Parliament

Anglia Ruskin University in London

London, Your City

Studying at our campus in the capital allows you to immerse yourself into the busy and diverse life London has to offer.

Anglia Ruskin University London

Based in a modern building in the heart of the city, ARU London focuses on delivering a range of Undergraduate and Postgraduate courses of the highest calibre. Our central location, convenient transport links and established relationships across the city all come together to help you take advantage of studying in one of the world's best student cities*. Choosing to study in a truly international capital that is famed for its history, business, and culture will not disappoint.

*QS Best Student Cities 2015

Life in London

Location

London is rightly said to be the most diverse city in the world with its endless variety of art, fashion, culture, sports, restaurants and nightlife. It's a city steeped in history where you'll struggle to find a dull moment when you are away from your studies. With a total student population of around 380,000 from over 100 countries, London offers an unrivalled multicultural experience and is one of the most popular student destinations in the world.

With the campus situated in the heart of the capital in EC1, you will find everything at your doorstep. London is home to many worldwide renowned museums, has an abundance of world-class art galleries and has infamous music and theatre venues - again boasting worldwide reputations.

Culture

Being one of the culinary capitals of the world whatever your taste buds desire, London can cater for it all. Whether you're visiting Borough Market or checking in at China Town no cuisine is left unexplored. The same is true for the nightlife. London's thriving nightlife scene can range from stand-up comedy to sell out concerts, if dance music and late nights are more your thing there are many clubs throughout the capital will not disappoint.

On top of all this London is truly the home of sport in the UK. The home of football can be found to the west at Wembley stadium. To the east, the Olympic Village in Stratford and the legacy of the 2012 London Olympics can be found. The home of cricket, Lords can be found just off Marylebone and a short tube journey from here to the south-west will lead you to Twickenham, the home of English Rugby. Not only can you watch just about any sport in London but we encourage you to take part with opportunities to play all throughout the capital.

Transport

Everything is easily accessible through excellent transport links. We are minutes from numerous London Underground stations including: Farringdon, Chancery Lane and Blackfriars.

London, Your Campus

Well Connected

The proximity of both Chancery Lane (Central line) and Farringdon stations (Hammersmith & City, Circle, Metropolitan Underground lines + First Capital Connect, Thameslink, and Southeastern rail services) make ARU London very easy to get to from all areas of London and outside the capital. In 2020 Farringdon will also become one of the central hubs for Crossrail, when the Elizabeth line (Crossrail) at Farringdon station opens it will be one of the busiest in the UK, connecting with Thameslink and the London Underground to provide links with outer London, the home counties, the City, Canary Wharf and three of London's five airports.

Location

ARU London's campus is located at 19 Charterhouse Street, EC1, in the heart of central London. The campus is within a minutes' walk of the city and the square mile (London's business and financial district). Spread over a total area of some 65,000sq.ft, our London campus is a truly world class facility. World famous tourist attractions such as Covent Garden, Oxford Street, Leicester Square, The Shard, and St Pauls Cathedral are just a few minutes bus or tube ride away.



Facilities

A modern, well-equipped campus, spread over a total area of some 65,000 square feet, the ARU London campus comprises:



Five floors of state-of-the-art lecture theatres, seminar rooms, PC-equipped study areas and space for you to work, relax and socialise.



We have over 30 seminar rooms and theatres ranging in size from those that can accommodate up to 200 students in a theatre style seating arrangement to others that are perfect for highly interactive seminars.



Multiple computer labs.



A library housing copies of all the core textbooks, a range of relevant publications and online archives for each course. There are also dedicated areas suitable for study groups, quiet study or simply catching up on your emails.



If you need to refuel there is a wide range of supermarkets and food markets within minutes of the campus. We have dedicated areas for our students to eat and drink between classes.



Two student common rooms, one equipped with computers and printing for those who want to continue their studies on campus. The other furnished with sofas and chairs for a more relaxed environment.



Wifi is available throughout the campus.

Open Days

Come and visit us

Our Open Days are easily the best way to decide if ARU London's for you.

You can explore the campus, take a closer look at our facilities and above all, meet the fantastic people who study and work here. Throughout the day you will be able to discover our university and get a real feel for what university life would be like.

Information online and in print only ever provides part of the picture, seeing everything first-hand is always recommended!

You can find out more and book a place on our Open Days online at www.lca.anglia.ac.uk/events or by calling us on 020 7400 6784.

What do we have planned?

Here are some of the things you can expect at an Open Day.



Welcome Talk

We'll give you a brief overview of ARU London and tell you more about the things you can see and do.



Meet our course leaders

Find out about the courses that interest you and meet the people who teach them to get a real sense of what we can offer.



Advice sessions

Want to know more about finance, submitting an application, or career opportunities? We will cover all of these and other topics as well.



Students' Union

The Students' Union is at the heart of student life. Find out about its many clubs, societies, events and support services.



Campus tours

Explore the campus and soak up the atmosphere.



Talk to our staff

A variety of our teams will be present to say hello and answer your questions.



Location

Explore the local area and see first hand our fantastic location in central London. Get familiar with transport links and city life.

Student support



Director for Academic Quality and Student Experience, Charles O'Dean, believes studying at ARU London is not all about being in the classroom and burning the midnight oil. That is part of it, but there is a need for enjoyment and relaxation along the way. We aim to provide the opportunity for students to network and have fun throughout their study.

Your iCentre

At ARU London we have a team of Student Advisers in our Information Centre that are here to support the non-academic side to your studies. They are trained to advise and provide information on all areas of student life and can give guidance on how to access all of your learning platforms. The Information Centre is the central hub that you will go to for any enquiry; a Student Advisor will then help to direct you towards the right department if you need further assistance. Whatever your query they are always happy to help.

Student Welfare

At ARU London, your well-being is important to us. Our aim is to ensure all our students are fully supported throughout their studies. We have a Welfare Team to provide support if you are in need of someone to talk to about any personal circumstances affecting your studies.

The Student Welfare team offers information, advice and support to students with disabilities, mental health difficulties, on-going medical conditions and specific learning difficulties. In accordance with our duties under the Equality Act, we provide reasonable adjustments that meet the needs of disabled students, we try to remove or minimise disadvantages otherwise resulting from the disability and encourage students to participate in University life and succeed in their studies. Contact studentwelfare@lca.anglia.ac.uk to find out more.



What is a Students' Union?

We're a charity that supports students through university and exists to make your experience the best it can be. We're independent from ARU which means you get to decide how we're run and what we do. From your first day to your graduation, ARU Students' Union will be by your side, making sure your voice is heard and you can get the most out of your time with us.

Representation

You are an important part of the community at ARU so we are here to make sure your voice is heard. We facilitate the Course Rep election process and provide Course Rep training and also accompany Course Reps to Student Staff Liaison Committees. Become a Course Rep or submit an idea for change, tell us the good, the bad and the in-between!

Advice

You now have access to our free, independent and confidential Advice Service to help you decide the best options available to you. Worried about something on your course or not sure what your options are? Make an appointment or come for a drop in.

Officer Elections

This year saw our first ever Vice President (ARU London) Election, where you get to decide which student represents you for the year. This student works part-time with the Students' Union to represent the voice of all ARU London students for one year starting in July. This election runs annually in March.



About us

Anglia Ruskin University is an innovative university that was recently named in Times Higher Education as the only university in the UK to be a 'rising star' and one of the institutions predicted to be challenging the global elite by 2030*.

Our Academics

Studying at Anglia Ruskin University ensures that academic standards and the quality of learning opportunities built into your degree course are at the highest level.

We ensure that not only are our lecturers academically highly qualified, but they also boast significant real-world business experience. That's why all our lecturers are currently working or have worked within the sector they teach. Ensuring students don't just receive theoretical knowledge from their textbooks but also valuable practical examples. Perhaps most important of all, they are all great lecturers - adept at communicating their expertise in a lively, informative way that encourages students.

Our students rate ARU London highly for teaching, personal development and assessment & feedback. **92%** of students agree that lecturers are articulate and succinct as well as **91%** of students say that lecturers are enthusiastic**.

Entrepreneurship at ARUL

Anglia Ruskin University has long been renowned for its success in nurturing Entrepreneurial talent and we continued our run of awards for entrepreneurship at the Lloyds Bank National Business Awards 2016 otherwise known as "the Oscars of Great British business."

We saw off a packed field of competition to win the Duke of York Award for University Entrepreneurship. The judges said that ARU had "injected enterprise and innovation throughout the curriculum". Winning the Duke of York Award for University Entrepreneurship underlines the emphasis Anglia Ruskin places on ensuring an entrepreneurial culture runs through the fabric of our university.

The Duke of York Award for University Entrepreneurship - Recognising the work of universities to encourage, prepare and enable entrepreneurial opportunities.

**Firetail Report "Class of 2030: Which universities will rise - and how will they do it?"*

***National Student Survey 2016*

ARU London's Student Satisfaction

In a recent analysis of student satisfaction, Anglia Ruskin University London (ARUL) students rated their satisfaction as higher than any other Faculty, with an overall satisfaction rate of **8.3** out of a possible **10**.

At the end of each semester, all students are provided with the opportunity to grade their satisfaction with each module they have studied. ARUL received the highest satisfaction rating across all eleven questions surveyed, with "Module Lecturers Enthusiasm" receiving a huge **93.8%** and "Module Lecturers are good at explaining things" agreed upon **93.1%** of respondents.

Providing an education which satisfies our students whilst allowing them to reach their full potential is one of our key aims and it is wonderful to see the progress we are making. The excellent feedback on modules is a testament to the fantastic lecturers we have at ARUL, who work exceptionally hard every day to aid their students' learning. However, there is still much to do and after analysing the feedback, we have instigated initiatives to improve the VLE and student facilities which we hope will help to raise student satisfaction even higher over the next year.

David Sexton, ARUL Principal

What makes us different?

At ARU London we're committed to supporting our students to succeed in their studies; we're determined to help you realise your full potential.

Books4u

Throughout a student's life they often collect a small library worth of academic text books, these not so little things will help you get a good degree but can also be a financial burden. ARU London knows that the price tag of your reading materials can be very expensive and that is why we support our students by supplying the core textbook for each of your modules for free. For all new students starting in 2019/20 we will be providing E-books instead of a hard copy. E-books can be delivered to you instantly, they are portable through a mobile device, they accommodate various learning styles and have an interactive search which beats scrolling through hundreds of pages. During your orientation you will learn how to access your E-books and how best to use them.

Timetable

We've structured our degrees to be taught across a unique two to three day timetable. Our timetable won't only cut down on your travel costs making your Travel Bursary go further but will also allow you to find meaningful part-time work throughout your studies. Therefore, ARU London students can begin saving towards their tuition fee or living costs immediately and have the opportunity to graduate with little to no outstanding loan.

We also offer an evening and weekend study mode for selected undergraduate degrees. These full-time degrees can be an ideal solution if you are looking to start a degree but a standard daytime timetable doesn't work for you.



Travel Bursary

If you're new to the London commute you'll soon realise that over the course of your study it really adds up.

All of our students are eligible for a Travel Bursary.

To be eligible for the bursary you will require:

- Achieved a minimum **90%** attendance across all modules
- All assessment submissions deadlines to have been met

If the above requirements are met at the end of Semester 1, **£250** will be paid into your bank account to support travel. If the above requirements are met at the end of Semester 2, **£250** will be paid into your bank account to support travel.



Transport Bursary
every year worth **£500**

Scholarships

Scholarships of **£2000** are available for the overall top achievers in Year 0, Year 1 and Year 2.

Students with the highest scores in their Year 1 can achieve the Year 2 scholarships and similarly the top achievers from Year 2 can qualify for the Year 3 scholarship. If you are on a foundation degree you can also achieve a scholarship if you are a top achiever in Year 0 for a scholarship for Year 1.

ARUL provides a number of scholarships each year across our three Postgraduate intakes. All applicants are offered the chance to receive a scholarship of up to **50%** off their Master's Degree worth **£4,250**. Find more information on our website - www.lca.anglia.ac.uk/scholarships

Achievement Scholarships
every year worth **£2,000**

Your future

Here at ARU London we focus on a business-oriented education to ensure our students are equipped with the necessary knowledge, understanding and the all-important transferable skills for the world of work.

Employability Skills

Our degrees and Employability Scheme give you the opportunity to graduate with the required work ethic, finely tuned analytical skills, problem-solving abilities and the ambition to overcome challenges.

Research suggests that employers find that many UK graduates are not fit for the working world. With this in mind, all our undergraduate degree courses include a module Professional Skills to help build upon vital attributes, all of which go towards ensuring a successful future career.

We have worked closely with key employers to design courses to meet the future needs of their industries.

Embedded Employability

On all of our Undergraduate and Postgraduate courses, every student gets a high-quality educational experience together with the opportunity to gain industry exposure to give them the perfect mix of practical and academic skills.

At ARU London we encourage our students to work closely with our key employers in order to maximise their chances of finding meaningful work during and after their degree. We host guest speaking events and recruitment presentation which gives our students valuable insight into the expectations and employers in a variety of industries.



Employability Scheme

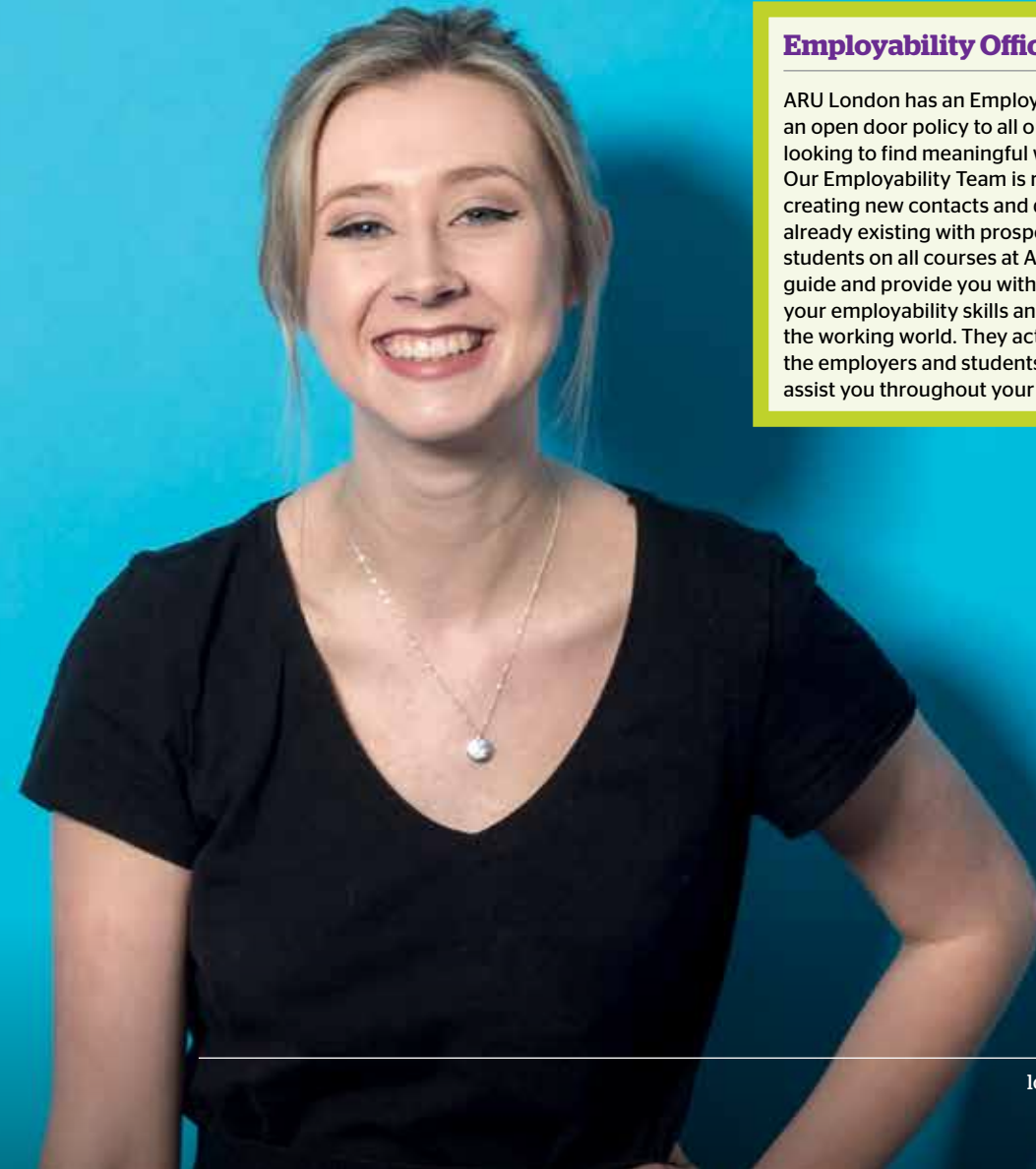
Ensuring that students enjoy their time at ARU London and graduate with a first class degree is paramount, but just as important is ensuring they go on to have a successful future. Employability is key at ARU London and is delivered through our Employability Scheme. The scheme gives students the chance to be exposed to employers, build their personal capabilities and so maximise their employment potential.

The Employability Passport which is part of the Employability Scheme is designed to prepare students for the graduate jobs market through employability sessions and industry exposure. Students take part in professional CV sign off and mock interview sessions to fully prepare them for employment.



Employability Office

ARU London has an Employability Office with an open door policy to all our students who are looking to find meaningful work whilst they study. Our Employability Team is responsible for creating new contacts and developing those already existing with prospective employers for students on all courses at ARU London. They will guide and provide you with the tools to improve your employability skills and prepare you for the working world. They act as a link between the employers and students and are available to assist you throughout your study at university.



What to expect

Here at ARU London we have a unique approach to the teaching timetable.

A timetable that suits you

Not only do we ensure you receive an above average 12 hours of teaching each week but we deliver these across only 2 or 3 days. This structure gives our students the flexibility to secure a successful future whilst receiving a first class education.

We believe our timetable gives you the best chance of securing meaningful part-time work and thus the chance of simultaneously enhancing your employability and easing any money worries you may have.

Your learning

Each module is delivered through a combination of group lectures and tutorials. In lectures the main ideas and concepts are presented and in tutorials students form smaller groups for an interactive discussion and analysis of the lecture content.

Teaching support at ARUL

If you think you need it, we run English and IT support classes which are open for students to participate in to improve their skills in these areas. Our IT workshops cover a variety of different topics throughout the year and are accessible for novices all the way up to IT wizards. Students are free to pick and choose the sessions they would like to attend.

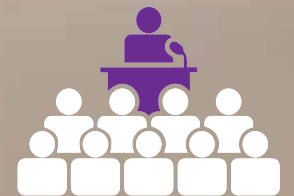
We also hold a weekly series of "How to..." workshops throughout the semester that focus on topics requested by students to address the common challenges they are facing during university life. The "How to Present Successfully" and "How to get a Promotion" are just a couple of the events in our "How to..." series.

Resources at ARUL

As an ARU student you will have access to ARUL's Learning Resource Centre, Computer Labs and support classes in numerous subject areas. You will also be able to utilise the extensive online library resources of Anglia Ruskin University to support you throughout your degree. Our online Virtual Learning Environment "VLE" provides you with a wealth of additional information including: lecture notes, further study materials and the ARU e-Library.

Personal tutors

You'll be allocated a personal tutor at the start of your course - they are your first point of contact for questions about your studies. Regular sessions mean your tutor will be up-to-date on your progress and able to offer insightful guidance to help reach your full potential.



90.3% of students think their modules are intellectually stimulating

Accommodation



Top Tips

Shop around

Don't simply go for the first place you see. Make sure you look around before you decide and do your research.

Know what you want

Know what type of place you want to live in and what area. Check out how easy it is to commute to the campus and back home.

Set a budget

Create a figure of the amount you are willing to pay for rent and bills. Stick to this figure and don't allow yourself to be driven up in cost.

Speak to us

We can give you meaningful advice and put you in touch with other students who are also seeking accommodation.

Have a look on - www.housingguideonline.co.uk/HousingGuide

Whilst we do not have any halls of residence on campus, we are able to direct you to our preferred partners who can offer various types of accommodation within easy travelling distance of ARU London.

In London there are many different types of Student Accommodation to suit every budget, style and preference. The main types of student accommodation consist of private student halls, house or flat shares, bedsits/studios and lodgings.

For more information please visit our website www.lca.anglia.ac.uk/accommodation.

Things to start thinking about

Living with other ARU London Student's

It can be easier to find a whole house to rent than a single room, so if you're looking for potential housemates, please contact one of our Student Advisors (lcentre@lca.anglia.ac.uk) and we can start to look for your potential flat mates with other ARUL students.



Who do you want to live with?

Sharing a house with friends can be brilliant; just take care. Don't rush into sharing a house with people you don't know really well. Choose the right people to live with and you'll have a great time together. Before signing anything, spend time discussing what you all want out of your year as housemates. It's important to make sure that your lifestyle doesn't give your housemates cause for complaint.



Which geographical area do you want to live in?

Remember that rent levels vary depending on different factors, such as distance from the city centre and public transport links. Do you want a convenient location for pubs, shops and the campus? Are there good public transport links? Can you get home safely?

Undergraduate courses

At ARU London we are extremely passionate about developing and sharing knowledge, we hope to advance the knowledge of our students and are immensely passionate in the education we deliver.

Study Options

All undergraduate degree courses are offered for full-time study for 3 years as standard or 4 years as an extended study option.

Across all of our courses and the modules within them we aim to provide a relevant and comprehensive education. In addition to providing students with a thorough grounding in theory, there is a great deal of emphasis on the practical side of teaching. Many of our academic staff remain actively involved in business practice which enables them to keep their modules relevant and stimulating.

Alternative Study Mode

If the standard daytime study mode doesn't suit your needs we also offer an evening and weekend study mode. This comprises of two evening sessions and a full day session at the weekend, the degrees offered on this alternative study mode are full-time and have the same number of classroom hours as the standard daytime delivery.

Quick Facts

Campus: London

Duration: 3 Year or 4 years (extended study)

Mode: Full-time

Available Starts: September, January



ARU London students rated their satisfaction amongst the highest throughout the university



Our students rate our "Module Lectures Enthusiasm" at

93.8%



2 day a week timetable



Overall student satisfaction rate of

8.3 out of 10

For more information

and to see what courses are available on the alternative study mode please see more information on our website - www.lca.anglia.ac.uk/undergraduate

Business and Events Management

BSc (Hons)

Quick Facts

Campus: London

Duration: 3 Years

Available Starts: September, January

UCAS Code: NN81

Tariff Points: 104 UCAS tariff points

Institution code: L63

The events industry is experiencing momentous global growth.

They dominate the media, fill transport systems, hotels and venues, along with delivering objectives, motivating communities and creating positive impacts.

The events industry is experiencing momentous global growth. The UK events sector currently contributes over £39.1 bn to the economy, thus driving continual demand for specialist graduates, who not only understand both the theories of business and events management but are also equipped with practical experience. Hosting events matters, but not simply because of the money spent in the local economy whilst the event is taking place. Major events focus the world's attention on one location - increasing people's interest in visiting, studying or investing there.

This degree has been designed to prepare graduates for the Business and Events sector. It blends both academic practice with the study of core business skills and management concepts along with a live project. This synthesis allows students to develop and apply their knowledge, understanding and expertise. In completing this course, students will be able to understand the career specialism that reflects their interests and abilities, identify career pathways and the professional expectation to achieve them.

Associated careers

In today's tough jobs market, graduates need to stand out from the crowd to successfully secure that all important first full-time job after university. A BSc Business and Events Management from ARU London will definitely enhance your employability:

- In your third year you will undertake the Events Live Project which will enable you to integrate your academic knowledge with experiences beyond the classroom and combine your developing knowledge, skills and personal ideas in order to develop transferable skills which can be applied in the workplace. Prodigious for your CV.
- Your ARU London lecturers all have first-hand experience of business and event management. You are therefore assured that the content of your degree will be directly relevant to the demanding, constantly evolving world.

Module Guide

Year 1

- Hospitality, Tourism and Events Environment
- Business Finance
- Academic and Professional Skills
- Managing Quality in Hospitality, Tourism and Events

Year 2

- Principles and Practices of Marketing
- Managing Human Resources
- Event Planning and Project Management
- Event Themes and Designs

Year 3

- Business Strategy
- International Event Management (15 credits)
- Hospitality and Venue Management (15 credits)
- Tourism and Events Management Live Project
- Undergraduate Major Project (Integrated Case Study)



Skills & development

This degree course offers the chance to combine academic study of the business and events management sector.

In-depth understanding of the event industry and the operation of organisations within it, with specific reference to the concepts and characteristics of event management, globalisation, cultural concepts, marketing, event design, creativity and strategy.

Knowledge of contemporary issues in events management that can influence the different phases of events and an organisation's performance designing, planning and running live events.

You will benefit from

As one of the most important financial and business centres in the world, London is a hub for hosting events, offering some of the very best examples in terms of venues.

Interactive discussions, presentations, group work and guest lectures.

During your studies there will be the opportunity to participate in the Employability Scheme with the specific objective of enhancing your future employment prospects. This includes CV workshops, interview techniques, career counselling and visits from prospective employers.

Business and Hospitality Management

BSc (Hons)

Quick Facts

Campus: London

Duration: 3 Years or 4 years with foundation year

Available Starts: September, January

UCAS Code: 1N22 - 3 years, NN11 - 4 years with foundation year

Tariff Points: 104 UCAS tariff points

Institution code: L63

Hospitality is experiencing exponential global growth.

Driving continual demand for specialist graduates, who both understand the theories of business and have practical experience of this fast paced workplace. Employment in the UK hospitality industry continues to experience significant growth and currently accounts for over 9% of the UK's total employment, as well as contributing 10% of the UK's total GDP.

The structure of this degree enables an understanding and evaluation of business concepts of management, whilst preparing graduates for the hospitality sector through the extensive use of case studies, guest speakers and off-site visits. This synthesis allows students to develop their knowledge whilst gaining commercial awareness and expertise within the industry.

The campus is located in the heart of London's thriving hospitality industry which facilitates the university's employability team in forging strong relationships and consequent employment opportunities for students.

The hospitality industry continues to develop at a rapid rate which means there continues to be huge demand for graduates who can demonstrate an in-depth understanding of business theory as it applies to the sector, together with relevant employability skills.

Associated careers

In today's competitive jobs market, graduates need to stand out from the crowd to successfully secure that all important first full-time job after university. A BSc (Business and Hospitality Management) from ARU London will definitely enhance your employability:

- Your ARU London lecturers all have first-hand experience of business and many continue to work in the hospitality sector. You are therefore assured that the content of your degree will be directly relevant to the demanding, constantly evolving world of contemporary business. Furthermore, you will study business from a practical as well as an academic perspective.
- ARU London lecturers have a wealth of contacts too and you will study alongside students from all over the world. All great for networking!

Module Guide

Year 1

- Hospitality, Tourism and Events Environment
- Business Finance
- Academic and Professional Skills
- Managing Quality in Hospitality, Tourism and Events

Year 2

- Principles and Practices of Marketing
- Managing Human Resources
- Hospitality Management
- Customer Service Management for Tourism, Hospitality and Events

Year 3

- Global Hospitality and Tourism Issues
- Hospitality and Venue Management
- Business Strategy
- Leadership and Change Management
- Undergraduate Major Project (Integrated Case Study)



Skills & development

This degree offers the chance to combine academic study of the business and hospitality sector plus opportunities to gain employment within the sector.

Develop management skills required to lead a team. This includes skills in anticipating and responding to a fast-paced industry, adapting quickly whilst identifying new opportunities, generating solutions, implementing improvements and thinking creatively.

Develop a deep understanding of key global factors that impact the hospitality industry.

You will benefit from

Our employability team will assist you should you wish to secure a part-time hospitality job.

As one of the most important financial and business centres in the world, London is a world-class hospitality hub, offering some of the very best examples in terms of service and luxury accommodation.

ARU London is also a proud member of the British Hospitality Association.

During your studies there will be the opportunity to participate in the Employability Scheme with the specific objective of enhancing your future employment prospects. This includes CV workshops, interview techniques, career counselling and visits from prospective employers.

Business and Tourism Management

BSc (Hons)

Quick Facts

Campus: London

Duration: 3 Years or 4 years with foundation year

Available Starts: September, January

UCAS Code: NN18 - 3 years, NN14 - 4 years with foundation year

Tariff Points: 104 UCAS tariff points

Institution code: L63

Tourism is one of the world's fastest growing industries.

Offering a wide range of potential career opportunities around the globe – in the UK alone, it is the largest industry, the 3rd largest export earner and worth approximately £115 billion a year.

This degree has been developed to give students the key business skills needed for a successful career in this sector. There is a particular focus on the current challenges facing the tourism industry; these include sustainability, global issues, ethical tourism, diverse competition and crisis management. Designed to unlock your potential by enhancing both your commercial awareness and specialist subject knowledge. This degree is a perfect entrance into this exciting important industry.

Associated careers

In today's tough jobs market, graduates need to stand out from the crowd to successfully secure that all important first full-time job after university. We believe your degree from ARU London will definitely enhance your employability:

- Your ARU London lecturers all have first-hand experience of business and some continue to work in business. You are therefore assured that the content of your degree will be directly relevant to the demanding, constantly evolving world of contemporary business. Furthermore, you will study business from a practical as well as from an academic perspective.
- We work with a number of employers to be able to offer part-time work in conjunction with our degrees.
- Throughout your course there will be additional seminars with the specific objective of enhancing your future employment prospects. These will include CV workshops, interview techniques, career counselling and visits from prospective employers.
- On successful completion of this degree, you might choose to move onto our postgraduate studies, such as our Master of Business Administration (MBA) - International.

Module Guide

Year 1

- Hospitality, Tourism and Events Environment
- Academic and Professional Skills
- Business Finance
- Managing Quality for Hospitality, Tourism and Events

Year 2

- Tourism Management
- Customer Service for Tourism and Hospitality
- Managing Human Resources
- Principles and Practices of Marketing

Year 3

- Business Strategy
- Global Hospitality and Tourism Issues (15 credits)
- Sustainable and Ethical Tourism (15 credits)
- Tourism and Events Management Live Project
- Undergraduate Major Project (Integrated Case Study)



Skills & development

The key business skills needed for a successful career in tourism sector.

Particular focus on challenges facing the tourism industry.

This degree offers the chance to combine academic study of the business and hospitality sector plus opportunities to gain employment within the sector.

Develop practical management skills from the 'Live Project', where you will be required to become part of a team, anticipating and responding to the challenges and test hypothetical work on a real project.

You will benefit from

Specialist subject knowledge.

Commercial awareness gained through off-site visits and job Opportunities.

Interactive discussions, presented study materials, student presentations, group works, guest lectures.

During your studies there will be the opportunity to participate in the Employability Scheme with the specific objective of enhancing your future employment prospects. This includes CV workshops, interview techniques, career counselling and visits from prospective employers.

Finance and Accounting

BSc (Hons)

Quick Facts

Campus: London

Duration: 3 Years or 4 years with foundation year

Available Starts: September, January

UCAS Code: NM43 - 3 years, NN17 - 4 years with foundation year

Tariff Points: 104 UCAS tariff points

Institution code: L63

A degree in accounting and finance has long been viewed as an excellent grounding for a career in business, regardless of whether you intend to become a professionally qualified accountant or not.

For students that are already considering undertaking a professional accounting qualification, the degree has been structured to provide the maximum possible number of exemptions (9 foundations papers in total) from the professional examinations of the Association of Chartered Certified Accountants (ACCA), the global body for professional accountants.

Whether you want to move into auditing, financial reporting, management accounting or financial services, this could be the course for you. You'll develop subject-specific skills alongside important transferable skills like communication, enterprise, problem solving and quantitative analysis.

The degree syllabus has also been carefully designed to combine both theoretical and practical aspects of finance and accountancy. This enables students to gain an excellent grounding in accounting and finance tools and techniques together with the wider understanding and real-world insights required by all finance professionals.

Associated careers

This degree is specifically tailored for those already considering moving on to professional accounting qualifications and a career in accounting and finance. You could go on to become a practising accountant, or opt for a wide range of careers in industry, business and the public sector. You may find yourself working in a global corporation, a small to medium-sized enterprise (SME) or even for yourself - it's not unusual for company CEOs to come from an accounting and finance background. Our graduates have moved directly into careers with Big Four auditors, such as PricewaterhouseCoopers (PwC).

ACCA Exemptions

Students who achieved first time passes in the relevant Finance and Accounting modules will receive exemptions from the Foundation Level exams of the ACCA (subject to payment of exemption fees and final approval from the ACCA).

Module Guide

Year 1

- Business Environment
- Academic and Professional Skills
- Business Planning
- Introduction to Financial Accounting

Year 2

- Legal Aspects of Business
- Managing Business Performance
- Financial Reporting for Business
- Taxation for Business

Year 3

- Financial Management in Organisations
- Business Strategy
- Financial Auditing
- Undergraduate Major Project (Integrated Case Study)

Skills & development

The course has been structured to provide the maximum possible number of exemptions - 9 papers in total - from the professional examinations of the Association of Chartered Certified Accountants, the global body for professional accountants.

You will learn theoretical and practical aspects of finance and accountancy in a business context.

Enable you to apply your accounting and finance knowledge and skills into practical real-life business environments.

You will explore the concepts of business culture and business ethics and the key management functions across the whole spectrum of business activity.

You will benefit from

A lecturing team including professionally qualified accountants with a host of real-world business experience.

You will be equipped with an array of transferable business skills, as well as technical knowledge of finance and accountancy practice. Both will prove essential if you decide to pursue professional accounting qualifications or move directly into a more general role in business.

During your studies there will be the opportunity to participate in the Employability Scheme with the specific objective of enhancing your future employment prospects. This includes CV workshops, interview techniques, career counselling and visits from prospective employers.

International Business Management

BSc (Hons)

Quick Facts

Campus: London

Duration: 3 Years or 4 years with foundation year

Available Starts: September, January

UCAS Code: N102 - 3 years, N101 - 4 years with foundation year

Tariff Points: 104 UCAS tariff points

Institution code: L63

In today's international market, businesses need employees who understand globalisation.

In an increasingly interconnected world, studying business from an international perspective makes sense for all those that seek a management career within business; whether it is a start-up microenterprise or a within a global multinational company.

In today's international market, businesses need employees who understand globalisation, sustainability and intercultural communication. Learn more about these complex issues and its management through real-world case studies, market researched pedagogy, and a strong theoretical backbone at ARU London.

The taught modules cover all the major functional areas of business from; finance and marketing to human resources and information systems. Building on this essential core knowledge, the degree examines and develops an understanding of the cultural, ethical and interpersonal challenges that arise within today's multicultural global business environment, from SMEs and how they compete on a global level; ethics and social responsibility; to technology and how organisations use information to support global operations and deliver competitive advantage.

The final year "Major Project" encourages you to utilise both the skills and knowledge learnt during the degree programme and combine them with current academic research that will further develop your professional expertise and career prospects.

Associated careers

In today's tough jobs market, graduates need to stand out from the crowd to successfully secure that all important first full-time job after university. We believe your degree from ARU London will definitely enhance your employability. On successful completion of this degree, you might choose to move onto our postgraduate studies, such as our MBA - International or our MSc - International Project Management.

Assessment

We'll assess your progress through a variety of methods from coursework, group assignments, activity-based assignments and exams. You can expect to partake in on-going problem-solving activities, projects and presentations. You'll also be able to access support material through our ARU Virtual Learning Environment (VLE).

All assignments are designed with your career progression in mind and give you opportunities to develop and improve transferable skills employers look for.

Module Guide

Year 1

- Business Environment
- Academic and Professional Skills
- Economics for Business
- Business Finance

Year 2

- Legal Aspects of Business
- Managing Human Resources
- Principles and Practice of Marketing
- Business Information

Year 3

- Operational and Project Management
- Business Strategy
- Managing International Business
- Undergraduate Major Project (Integrated Case Study)



Skills & development

This allows you to gain a broad understanding of the key areas of business which will enable you to appreciate the importance of the different functions.

Managing International Business.

Develop your knowledge on contemporary global trends; globalisation, intercultural awareness, sustainability, and ethics.

You will benefit from

You will study business from a practical as well as from an academic perspective.

The third-year major project allows students to utilise all the skills and knowledge gained throughout the course and combine them in a piece of original real-world research that will help to further develop their professional skills and future career prospects.

During your studies there will be the opportunity to participate in the Employability Scheme with the specific objective of enhancing your future employment prospects. This includes CV workshops, interview techniques, career counselling and visits from prospective employers.

Business and Human Resource Management

BSc (Hons)

Quick Facts

Campus: London

Duration: 3 Years or 4 years with foundation year

Available Starts: September, January

UCAS Code: NN16 - 3 years, NN12 - 4 years with foundation year

Tariff Points: 104 UCAS tariff points

Institution code: L63

This course is a business skills degree with a focus on Human Resource Management.

The ability to recruit, motivate and manage employees effectively is considered one of the keys to success in business. Furthermore, ensuring that employees develop professionally is essential for achieving competitive advantage, given that people are one of the key resources in any business.

This degree focuses on the key role of people in a successful business. You will learn to understand the importance of the people behind the business and how they help the business prosper.

Designed to give you a thorough grounding in core business skills and concepts, the degree provides you with an in-depth knowledge and understanding of the key aspects of Human Resource Management, including how to source, develop, reward, and utilise employees to deliver strategic effect for organisations of all sizes and types.

Associated careers

In today's tough jobs market, graduates need to stand out from the crowd to successfully secure that all important first full-time job after university. We believe your degree from ARU London will enhance your employment prospects significantly. The degree is ideal for students who are interested in a career in managing corporate human resources, management and skills training, management recruitment or HRM consultancy. The course is also suitable for those looking for a rounded business qualification, with an emphasis on people management.

Assessment

We'll assess your progress through a variety of methods from coursework, group assignments, activity-based assignments and exams. You can expect to partake in on-going problem-solving activities, projects and presentations. You'll also be able to access support material through our ARU Virtual Learning Environment (VLE).

All assignments are designed with your career progression in mind and give you opportunities to develop and improve transferable skills employers look for.

Module Guide

Year 1

- Business Environment
- Academic and Professional Skills
- Economics for Business
- Business Finance

Year 2

- Legal Aspects of Business
- Managing Human Resources
- Principles and Practice of Marketing
- Resourcing the Organisation

Year 3

- Developing Human Resources
- Business Strategy
- Managing the Employment Relationship
- Undergraduate Major Project (Integrated Case Study)



Skills & development

Effective and contemporary approaches to People Management.

How to maximise employee engagement and commitment.

How to resource, develop, reward and motivate employees.

Management skills for diverse, cross-cultural workforces.

How to deploy Human Capital to deliver strategic business goals.

You will benefit from

Interactive discussions, presentations, group work and subject matter experts.

Comprehensive tutor support and academic skill development.

During your studies there will be the opportunity to participate in the Employability Scheme with the specific objective of enhancing your future employment prospects. This includes CV workshops, interview techniques, career counselling and visits from prospective employers.

Business and Law

BSc (Hons)

Quick Facts

Campus: London

Duration: 3 Years or 4 years with foundation year

Available Starts: September, January

UCAS Code: NM11 - 3 years, NM12 - 4 years with foundation year

Tariff Points: 104 UCAS tariff points

Institution code: L63

When you graduate you will have a sound appreciation of management practice.

This intellectually stimulating degree course addresses broader aspects of the business organisation and management culture, while also providing an insight into: corporate and consumer legislation, corporate regulation and other legal aspects of business enterprise. You will be equipped with a real understanding of how legal considerations impact virtually every aspect of management activity.

Employers look for business graduates with knowledge and awareness of current issues. This course will teach you about globalisation, sustainability and social change - allowing you to fully understand the factors affecting business. When you graduate you will have a sound appreciation of management practice, this will include: human resources, marketing, business law and information management. You will also learn the skills to analyse strategic consumer behaviour.

Associated careers

In today's tough jobs market, graduates need to stand out from the crowd in order to secure that all important first full-time job after university. The degree from ARU London will prepare you for a range of careers in the complex corporate environment. You may choose to work in business, law, HR, administration or the public sector. ARU London lecturers have a wealth of contacts too and you will study alongside students from all over the world. All great for networking!

Assessment

We'll assess your progress through a variety of methods from coursework, group assignments, presentations, activity-based assignments and exams. You can expect to take part in on-going problem-solving activities and projects. You'll also be able to access support material through our ARU Virtual Learning Environment (VLE).

All assignments are designed with your career progression in mind and give you opportunities to develop and improve transferable skills employers look for.

Module Guide

Year 1

- Business Environment
- Academic and Professional Skills
- Economics for Business
- Business Finance

Year 2

- Legal Aspects of Business
- Managing Human Resources
- Law of Contract
- Law of Business Organisations

Year 3

- Commercial Law
- Business Strategy
- Law of International Trade
- Undergraduate Major Project (Integrated Case Study)



Skills & development

Knowledge and understanding of complexities of corporate environment.

Ability to identify ethical issues in business.

Problem-solving through application of legal regulations of corporate governance.

Research, analysis of complex data and communication.

You will benefit from

Lecturers who have first-hand experience of business, some of whom continue to work in the business sector.

You are therefore assured that the content of your degree will be directly relevant to the demanding, constantly evolving world of contemporary business. Furthermore, you will study Business and Law from a practical as well as from an academic perspective.

Lecturers with experience of working in legal practice.

Interactive discussions, presentations, group work, projects and guest lectures.

During your studies there will be the opportunity to participate in the Employability Scheme with the specific objective of enhancing your future employment prospects. This includes CV workshops, interview techniques, career counselling and visits from prospective employers.

Business & Marketing

BSc (Hons)

Quick Facts

Campus: London

Duration: 3 Years or 4 years with foundation year

Available Starts: September, January

UCAS Code: NN15 - 3 years, NN13 - 4 years with foundation year

Tariff Points: 104 UCAS tariff points

Institution code: L63

People with marketing know-how are vital to just about every business or organisation.

There is always a high demand for skilled marketing graduates. Study for our honours degree and you'll gain the skills and knowledge businesses really need, opening up your career options.

At ARUL we realise that the marketing function of an organisation is a dynamic, creative and fast moving process. The syllabus evaluates the key marketing skills of forward thinking, communication, and originality, whilst building core knowledge in the areas of branding, brand management, market research methods, consumer behaviour and digital marketing. Our lecturers are experts in their fields and all have industry experience.

With the growing importance of the online campaign, you will also consider the role of digital marketing in marketing strategy and the key metrics for measuring effectiveness. With marketing knowledge and skills grounded in key business concepts, this degree lays the balanced foundations for a successful career.

Associated careers

In today's tough jobs market, graduates need to stand out from the crowd to successfully secure that all important first full-time job after university. We believe your degree from ARU London will definitely enhance your employability. The course will prepare you for a career in marketing management in sectors such as FMCG, financial services, telecoms and tourism. You might choose to focus on a specialist area such as advertising and sponsorship, brand and product management or digital marketing. On the other hand, some roles involve the whole marketing mix, job titles to look for include Marketing Executive, Marketing Officer, Marketing Assistant and Brand Manager.

Assessment

We'll assess your progress through a variety of methods from coursework, group assignments, activity-based assignments and exams. You can expect to partake in on-going problem-solving activities, projects and presentations. You'll also be able to access support material through our ARU Virtual Learning

Module Guide

Year 1

- Business Environment
- Academic and Professional Skills
- Economics for Business
- Business Finance

Year 2

- Legal Aspects of Business
- Managing Human Resources
- Principles and Practice of Marketing
- Marketing Communications

Year 3

- Consumer Behaviour
- Business Strategy
- Digital Marketing
- Undergraduate Major Project (Integrated Case Study)

Environment (VLE). All assignments are designed with your career progression in mind and give you opportunities to develop and improve transferable skills employers look for.



Skills & development

Key marketing skills of forward thinking, communication and originality.

Core knowledge in the areas of brand management, digital marketing and market research methods.

Growing importance of online campaign and social media marketing.

The key metrics for measuring effectiveness.

Marketing knowledge and skills grounded in key business concepts.

You will benefit from

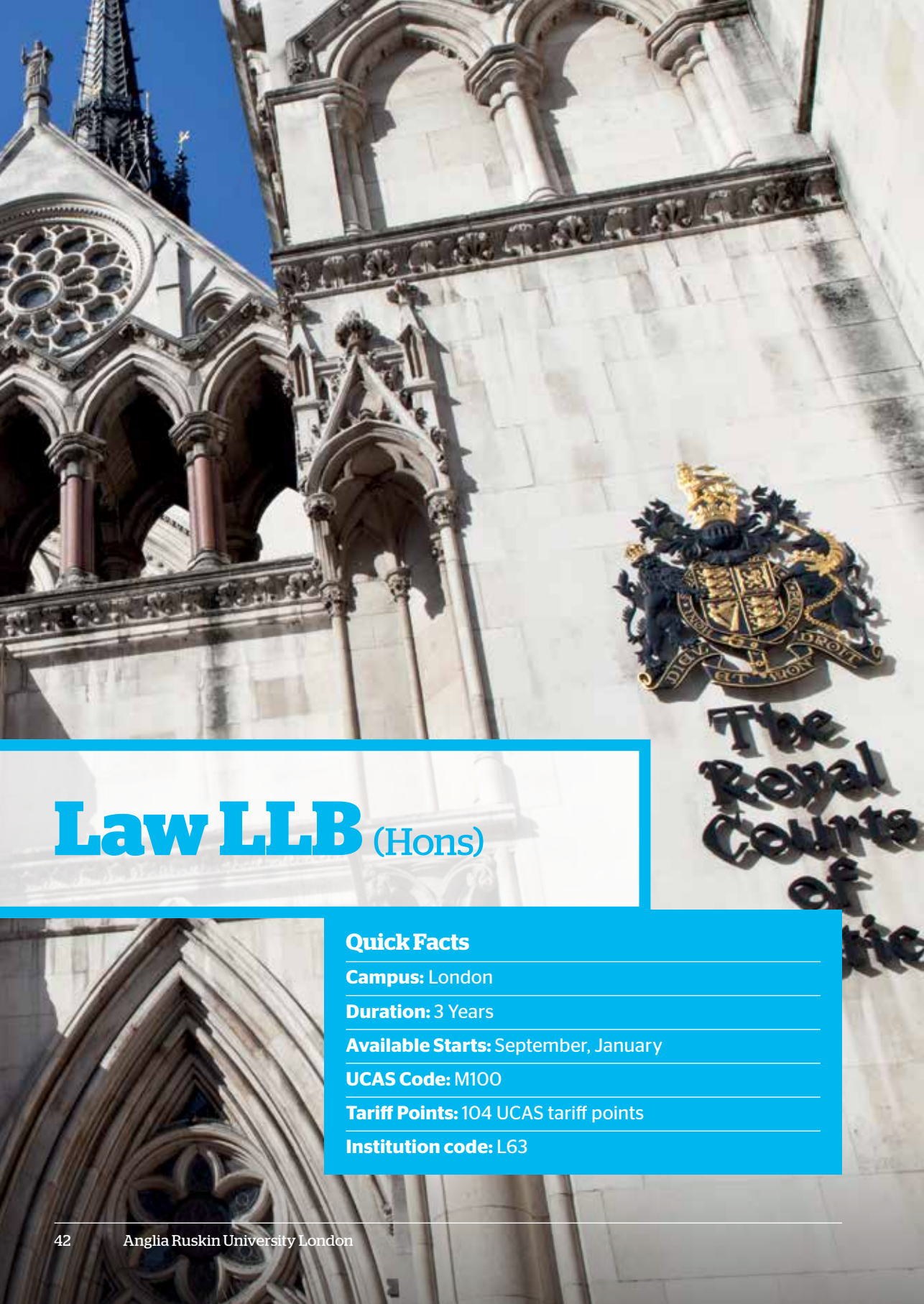
Balanced foundations of skills and knowledge for a successful career.

Understanding of current marketing trends and campaigns.

Ability to think outside the box.

To be creative, innovative and at the same time strategic.

During your studies there will be the opportunity to participate in the Employability Scheme with the specific objective of enhancing your future employment prospects. This includes CV workshops, interview techniques, career counselling and visits from prospective employers.



Law LLB (Hons)

Quick Facts

Campus: London

Duration: 3 Years

Available Starts: September, January

UCAS Code: M100

Tariff Points: 104 UCAS tariff points

Institution code: L63

Take your first step to becoming a solicitor or barrister at ARU London.

Our course will qualify you for the next stage of your legal training. On the way, you'll learn skills that will give you a step-up in other careers, and you could be awarded a Higher Diploma in Paralegal Practice in addition to your degree.

This qualifying law degree, accredited by the Solicitors Regulation Authority (SRA) and the Bar Standards Board (BSB), will allow you to progress to the vocational stage of training as a solicitor or barrister.

You'll study both academic and practical aspects of the law, which, as well as preparing you for a legal career, will give you many skills that are highly valued in other occupations. We encourage you to focus on your areas of interest and develop specialisms, such as family law, criminal law and procedure and/or civil law and litigation. In addition you will be supervised for your major undergraduate project on a legal subject of your choosing.

Associated careers

If you want to proceed to the vocational stage of training as a barrister or solicitor (Bar Professional Training Course or Legal Practice Course), this LLB is your first step. You might also choose to work in private practice as a paralegal, carrying out many of the tasks and roles of a qualified solicitor.

The skills you gain from this course will also open up opportunities for you in many other professions, including

banking, commerce, local and central government and teaching.

Assessment

We'll assess your progress through a variety of methods from coursework, group assignments, activity-based assignments, and exams. You can expect to partake in on-going problem-solving activities, projects, and presentations. You'll also be able to access support material through our ARU Virtual Learning Environment (VLE).

Module Guide

Year 1

- Legal Method & Skills
- Constitutional & Administrative Law
- Contract Law
- Foundations of Criminal Law

Year 2

- European Union Law
- Law of Tort
- Equity & the Law of Trusts
- Legal Research: Theory and Practice
- + 2 optional modules

Year 3

- Civil Litigation
- Land Law
- Undergraduate Major Project in Law
- + 3 optional modules

Optional Modules

- Company Law in Context (Year 2)
- Law of Succession (Year 2)
- International Human Rights Law (Year 2)
- Family Law (Year 2)
- Law of Information, Intellectual Property and Social Media (Year 3)
- Issues in Medical Law (Year 3)
- Child Law (Year 3)
- Criminal Litigation with Evidence (Year 3)
- Employment Law (Year 3)
- Public International Law (Year 3)



Skills & development

A solid grounding in legal principles.

Knowledge of the fundamental features of the UK and the EU legal systems and the context in which the law operates.

Ability to engage in critical analysis, solve legal problems and undertake independent research.

Advocacy.

The ability to construct complex legal argument.

You will benefit from

Option to graduate with two awards: the LLB (Hons) and Higher Diploma in Paralegal Practice from the National Association of Licensed Paralegals. The Higher Diploma can help you to secure a job as a paralegal. It can also give you a head start with the Legal Practice Course (LPC) or Bar Professional Training Course (BPTC), by introducing you to some of the skills you'll develop in these courses.

Participation in lectures, tutorials, workshops, seminar presentations, mootings (debating points of law before a judge), group work and projects.

During your studies there will be the opportunity to participate in the Employability Scheme with the specific objective of enhancing your future employment prospects. This includes CV workshops, interview techniques, career counselling and visits from prospective employers.

Law and Accounting

BSc (Hons)

Quick Facts

Campus: London

Duration: 3 Years or 4 years with foundation year

Available Starts: September, January

UCAS Code: NM41 - 3 years, MN11 - 4 years with foundation year

Tariff Points: 104 UCAS tariff points

Institution code: L63

A degree qualification in law and accounting has long been viewed as an excellent grounding for a variety of professional careers.

This intellectually stimulating degree addresses the broader aspects of the business organisation and management culture, while also providing an insight into corporate and consumer legislation, corporate regulation and external financial reporting obligations of business and enterprise.

The course will equip you with a real understanding of how legal considerations have an impact on virtually every aspect of business activity. You'll study both academic and practical aspects of the law, which as well as preparing you for a possible legal career, will give you many skills that are highly valued in other occupations outside of the law. You will also explore the financial accounting information required in organisations together with the impact of international accounting standards and the relevant auditing implications. Alongside the law and accounting modules, you'll develop subject-specific skills alongside important transferable skills like communication, enterprise, problem solving and quantitative analysis.

Associated careers

In today's tough jobs market, graduates need to stand out from the crowd to successfully secure that all important first full-time job after university. This academically rigorous degree is a sound foundation for a career both in the legal and financial sectors but can also lead into many other careers from banking to politics.

Assessment

We'll assess your progress through a variety of methods from coursework, group assignments, activity-based assignments, and exams. You can expect to partake in on-going problem-solving activities, projects, and presentations. You'll also be able to access support material through our ARUL Virtual Learning Environment (VLE).

All assignments are designed with your career progression in mind and give you opportunities to develop and improve transferable skills employers look for.

Module Guide

Year 1

- Business Environment
- Academic and Professional Skills
- Economics for Business
- Introduction to Financial Accounting

Year 2

- Legal Aspects of Business
- Law of Contract
- Financial Reporting for Business
- Law of Business Organisations

Year 3

- Commercial Law
- Business Strategy
- Financial Auditing
- Undergraduate Major Project (Integrated Case Study)



Skills & development

Insight of legal and accounting aspects of business enterprise.

Understanding of how legal and financial reporting considerations have an impact on virtually every aspect of management activity.

Enable you to apply your legal and accounting knowledge and skills into practical real-life business environments.

Problem-solving through the application of regulations of corporate governance.

You will benefit from

Interactive discussion and analysis of lecture content.

The content of your degree will be directly relevant to the demanding, constantly evolving world of contemporary business.

Employer visits, guest speakers and business events.

During your studies there will be the opportunity to participate in the Employability Scheme with the specific objective of enhancing your future employment prospects. This includes CV workshops, interview techniques, career counselling and visits from prospective employers.

Business and Healthcare Management

BSc (Hons)

Quick Facts

Campus: London

Duration: 3 Years or 4 years with foundation year

Available Starts: September, January

UCAS Code: 1N11 - 3 years, N100 - 4 years with foundation year

Tariff Points: 104 UCAS tariff points

Institution code: L63

The healthcare sector is the largest sector in the UK, employing over 4 million people.

The industry plays a crucial role in supporting the economy by maintaining the physical and mental health of the wider workforce. It is anticipated that around 2 million people will need to be trained and recruited before 2022 as a result of the sector's growth.

This degree course will provide you with a range of opportunities to develop the attitudes, abilities and competences needed to work in a health and social care environment, both home and international. The course will also encourage entrepreneurship as you will have opportunities to develop skills required to analyse complex contemporary business and healthcare organisations. Business analysis is a critical factor in determining organisational options as it forms the basis for negotiating, planning and execution to deliver on organisational goals.

Employers from the healthcare sector have been directly involved in the design and development of this course. Collaborations with these sector partners are used to explore those skill sets that employers are most interested in and to constantly ensure they are embedded within the delivery of the course. You will also benefit from lecturers who have significant industry experience.

Associated careers

In today's tough jobs market, graduates need to stand out from the crowd to successfully secure that all important first full-time job after university. On successful completion of this degree, you might choose to move onto our postgraduate studies, such as our MBA - Healthcare or pursue a career in business and/or healthcare.

Assessment

We'll assess your progress through a variety of methods from coursework, group assignments, activity-based assignments and exams. You can expect to partake in on-going problem-solving activities, projects and presentations

Module Guide

Year 1

- Healthcare Environment
- Academic and Professional Skills
- Business Finance
- Service Operations Management

Year 2

- Business Information Systems
- Innovation and Entrepreneurship in Healthcare
- Managing Human Resources
- Principles and Practice of Marketing

Year 3

- Business Strategy
- Contemporary Themes in Healthcare Policy and Practice
- Leadership & Change Management
- Undergraduate Major Project (Integrated Case Study)



Skills & development

This degree offers the chance to combine academic study of the business and healthcare sector plus opportunities to gain employment within the sector.

Knowledge and understanding of complexities within the healthcare industry.

Management skills for diverse, cross-cultural workforces.

You will benefit from

The healthcare sector currently employs over 4 million people and with 12% growth projected, graduates who can demonstrate an in-depth knowledge of the relevant business concepts as well as first-hand experience in the sector will be in great demand.

During your studies there will be the opportunity to participate in the Employability Scheme with the specific objective of enhancing your future employment prospects. This includes CV workshops, interview techniques, career counselling and visits from prospective employers.

Health and Social Care

BSc (Hons)

Quick Facts

Campus: London

Duration: 3 Years or 4 years with foundation year

Available Starts: September, January

UCAS Code: L500 - 3 years, L501 - 4 years

Tariff Points: 104 UCAS tariff points

Institution code: L63

It is anticipated that around 2 million people will need to be trained and recruited before 2022 as a result of the sector's growth.

The health and social care sector is the largest sector in the UK, employing over 4 million people. The industry plays a crucial role in supporting the economy by maintaining the physical and mental health of the wider workforce.

This degree course will provide you with a range of opportunities to develop the attitudes, abilities and competences needed to work in a health and social care environment, both home and international. Today's health and social care organisations are exciting, complex and varied, therefore, successful practitioners require innovation and resilience. This course will offer you opportunities to use real-life case studies which draw on skills such as prioritisation, negotiation and care planning.

Employers from the health and social care sector have been directly involved in the design and development of this course. Collaborations with these sector partners are used to explore those skill sets that employers are most interested in and to constantly ensure they are embedded within the delivery of the course. You will also benefit from lecturers who have significant industry experience.

Associated careers

In today's tough jobs market, graduates need to stand out from the crowd to successfully secure that all important first full-time job after university. A Health and Social Care honours degree from ARU London

will enhance your employability prospects and if you wanted to carry on in Higher Education you might choose to move onto postgraduate studies, such as our MBA - Healthcare.

Module Guide

Year 0 (Only for 4-year extended degree)

- Foundations of Computer Based Technology (CBT) and Management Information Systems
- Introduction to Health and Social Care
- Build a Business
- Academic Research and Writing
- Communication Skills
- Ethics & Values in Health and Social Care
- Quantitative Methods (Foundation Mathematics)

Year 1

- Healthcare Environment

- Academic and Professional Skills
- The Healthcare Professional
- Health and Safety in Care Settings

Year 2

- Lifecycle Development
- Vulnerable Persons
- Significant Life Events and Coping
- Promoting Health and Wellbeing

Year 3

- Leadership & Change Management
- Comparative Healthcare Systems
- Contemporary Themes in Healthcare Policy and Practice
- Undergraduate Major Project (Integrated Case Study)



You will benefit from

The University campus provides a fully staffed employability and careers management service to support learners to get part-time work in the health and social care sector. This will allow you to both experience the reality of working in the sector and test your academic learning through application. You will build key employability skills sought after by employers in this sector.

The health and social care sector currently employs over 4 million people and with 12% growth projected, graduates who can demonstrate an in-depth knowledge of relevant concepts as well as first-hand experience in the sector will be in great demand.

During your studies there will be the opportunity to participate in the Employability Scheme with the specific objective of enhancing your future employment prospects. This includes CV workshops, interview techniques, career counselling and visits from prospective employers.

Extended Undergraduate Degree Course

Quick Facts

Campus: London

Duration: 4 years

Available Starts: September, January

Institution code: L63

The extended degree course has been specifically designed to ensure that candidates gain the skills needed to succeed at degree level.

For students who do not meet our standard entry requirements for admission to one of our undergraduate degree courses, ARU London offers the option of an extended four year degree course.

Modules help to develop skills in writing assignments, mathematics, computing, public speaking and presenting, whilst developing an understanding of the modern business world. Prospective students should expect to undertake significant amounts of reading and independent study outside of the classroom (approximately 12 hours per week during term time).

This course has particular appeal for candidates who want a change in career and candidates wanting to return to education. Our innovative courses ensure that what you learn can be practically applied to the business world as well as preparing you to tackle the academic workload of a full degree course.

Assessment

Assessments are varied and take the form of written essays, reports, and business correspondence, as well as tests in mathematics and presentations. The Build a Business module is worth double credits and is assessed by a semester-long group project ending in delivering a business pitch in front of a panel. The best performing groups also then present their ideas to senior management. Students should expect to work on written assignments of 1000-3000 words for most modules, due in at the end of the semester.

Module Guide

Semester - 1

- Introduction to Business
- Academic Research and Writing
- Quantitative Methods
- Business Communications

Semester - 2

- Understanding Business
- Building a Business
- Introduction to Computer-Based Technologies

*The extended degree modules for BSc Health and Social Care is available on its course profile page on p49.

Skills and development

Development of your academic skill set.

Improvement of Maths, English and computer skills.

Academic learning that has practical application in business and professional settings.

You will benefit from

Direct admission onto a range of 3-year degrees.

Extensive support and assistance.

Developing a broad general knowledge on which to base a specialist area of study at degree level.



Pathway

This course offers automatic enrolment onto a degree programme on successful completion. The degrees offered upon completion:

BSc (Hons) Business and Human Resource Management (UCAS code NN12).

BSc (Hons) Business and Law (UCAS code NN12).

BSc (Hons) Business and Marketing (UCAS code NN13).

BSc (Hons) Business and Tourism (UCAS code NN14).

BSc (Hons) Law and Accounting (UCAS code MN11).

BSc (Hons) Finance and Accounting (UCAS code NN17).

BSc (Hons) International Business Management (UCAS code N101).

BSc (Hons) Business and Hospitality Management (UCAS code NN11).

BSc (Hons) Business and Healthcare Management (UCAS code N100).

Postgraduate courses



Quick Facts

Campus: London

Duration: 1 Year (Full-time) or 2 years (Part Time)

Available Starts: September, January, May

When you choose to study a postgraduate course at ARU London you'll be taught by inspiring tutors and lecturers, many of whom are active researchers and industry contributors.

Studying a postgraduate degree at ARU London

All of our degrees have been developed by academics, together with senior industry executives and professional associations, to encapsulate the requirements of today's international business.

The programmes will be delivered through a world-class faculty and feature an interactive blended learning approach with teaching delivered through creatively designed lectures, workshops and seminars. There will be opportunities to hear guest lectures from entrepreneurs, senior executives and leading commentators. Visits will be arranged to Multinational enterprises (MNE) and Small or Medium Sized Enterprises (SME), not-for-profit organisations and government agencies. A postgraduate degree provides today's business leaders with an opportunity to enhance and update their technical skills and knowledge, differentiate themselves in the job market, provide a bridge to a new and/or different career and increase their remuneration.

The MBA and MSc degrees can be undertaken full-time and part-time. The programme can be completed in just 12 months by attending full-time which is two evenings a week over three trimesters together with thirty four Saturdays. The part-time version will take 24 months spread over six trimesters.

Postgraduate open days

Come and see for yourself. Tour the campus, meet us and find out how our courses could make all the difference to your career.

Please check our website for details of all open day dates www.lca.anglia.ac.uk/events

The timetable

ARU London's postgraduate courses are delivered on both full-time and part-time basis.

Full-time postgraduate* timetable - 2 Evenings and 1 Day



The Part-time postgraduate timetable may vary depending on which modules you are studying but will be at 50% intensity compared to the full-time timetable. Please contact us for more details on the part-time postgraduate timetable.

*please note this is the current timetable for 2019/20 and is subject to change.

Master of Business Administration

(MBA) - International

Quick Facts

Campus: London

Duration: 1 Year (Full-time) or 2 years (Part-time)

Available Starts: September, January, May

The programme will develop an understanding of successful business strategy and effective executive leadership management.

The MBA (International) programme is designed for professionals who are seeking to improve their management and leadership skills and broaden their theoretical knowledge of business and management. Over the duration of 12 or 24 months, students will acquire a deep knowledge of all the key business functions. Participants will gain a greater appreciation of the significance of the interrelationship of functional areas to the overall success of a business, in international, national and local markets. The course offers students the opportunity to study at a postgraduate level while maintaining and enhancing their contribution to their employer.

ARU London recognises that today business is conducted across international boundaries and that globalisation is a phenomenon that impacts all organisations. Therefore the focus of the course is on the specific challenges facing organisations that have global operations, or that transact business internationally. The course will also support the development of a range of transferable executive skills including: leadership; strategic decision making; problem-solving; change management, creativity, innovation and entrepreneurship; finance; operations management; information systems; marketing and human resource management.

Career Development

This programme has been developed by academics, together with senior industry professionals, to encapsulate the exact requirements which are required by global businesses. The course is designed for professionals who are in management, or executive management positions, and who are seeking to broaden both their knowledge and expertise. The course has also been designed to fulfil employer's requirements and to progress an applicant's career.

Moreover, an MBA will provide the opportunity to progress to a DBA or PhD.

During your studies there will be the opportunity to participate in the Employability Scheme with the specific objective of enhancing your future employment prospects. This includes CV workshops, interview techniques, career counselling and visits from prospective employers.

Assessment

Assessment is by module assignments based on the six taught modules together with a 15,000-word dissertation.

Modules

All of the modules you will study will examine three common and integrated themes:

- Internationalisation
- Sustainability
- Business ethics

The modules have been written and coordinated to take a holistic perspective and include the latest thinking and development in business. Preparation for an executive role is implicit throughout the degree with all students required to apply their skills and knowledge to their workplace as an integral part of the assessment of the course.



What to expect

The programme focuses on an interactive blended learning approach with the teaching delivered through creatively designed classroom activities and on-line videos, lectures and exercises. The teaching methods are designed to encourage students to apply their theoretical learning to their business as they progress through the course. The course will offer the chance for students to meet senior business and public sector leaders, academics, guest lecturers as well as participate in course related industry visits.

Module Guide

The programme has been built around the requirements of international employers and the practical knowledge required by their employees to progress their career.

- International Marketing, Innovation and E-Commerce
- International Leadership and Enterprise
- International Finance
- International Operations Management
- Strategic Management in a Global Context
- International Human Resources and Change
- Research Methods and Ethics
- Strategic Marketing and New Venture Development
- Postgraduate Major Project

Master of Business Administration (MBA) - Health and Social Care

Quick Facts

Campus: London

Duration: 1 Year (Full-time) or 2 years (Part-time)

Available Starts: September, January, May

This MBA in Health and Social Care provides students with knowledge and understanding of strategic management, as well as practical insight of contemporary issues in Health and Social Care organisations.

The complexity of modern healthcare and social care, arising from constant innovation, has been described as being “an order of magnitude” greater than other industries. Currently, health and social care service users increasingly demand a personalised, higher quality health care experience, whilst the threat of public sector austerity increases the pressure on providers, including the healthcare and social care supply chain, to deliver it. This postgraduate degree addresses the specific demands placed on professionals who are responsible for leading policy, strategy and services in their organisation; be it in the public, private or voluntary aided sector.

You will study the key management disciplines within a healthcare context; including business planning and finance, project and operations management, healthcare service improvement and leadership.

Whether you are a supervisor, manager, policy maker or a clinician wishing to know more about healthcare management, this course will make a significant impact on your current and future career.

Career Development

In today's competitive employment market, graduates need to stand out from the crowd to successfully secure that all important first full-time job or early promotion. We believe your postgraduate degree from ARUL will enhance your employability and career development:

- ARUL lecturers have extensive experience of the healthcare management sector and teaching and training in the sector. You are therefore assured that the content of your degree will be directly relevant to the demanding, constantly evolving world of contemporary healthcare and social care management. Furthermore, you will study management from a practical as well as from an academic perspective.

Assessment

ARUL employs assignments, presentations and examinations to measure student progress, along with an innovative case study, major project or dissertation.

The Major Project involves detailed research, analysis and reporting of a healthcare or social care related organisational issues.

Module Guide

The following are the core modules:

- Operations and Major Incident Management
- Healthcare Law and Ethics
- Managing Finance in Health and Social Care Organisations
- Entrepreneurship and Innovation Management
- Cross Cultural Leadership
- Marketing and Demand Management in Health and Social Care
- Strategy in the Public and Private Sectors
- Research Methods and Ethics
- Quality Improvement in Health and Social Care
- Postgraduate Major Project



Skills & development

Students will explore sophisticated commercial, managerial, legal, marketing and operational aspects relevant to the healthcare and social care sector and develop an effective leadership 'toolkit'.

You will benefit from

Lecturers who have worked as healthcare managers and have research or consultancy interests in the sector.

Opportunity to participate in the Employability Scheme with the specific objective of enhancing your future employment prospects. This includes CV workshops, interview techniques, and career counselling.

Strong partnerships with leading employers, who visit the University in search of prospective employees. These visits offer excellent opportunities for those who actively engage with the Employability Scheme, and acquire relevant employability skills.



Master of Business Administration

(MBA) – Hospitality Management

Quick Facts

Campus: London

Duration: 1 Year (Full-time) or 2 years (Part-time)

Available Starts: September, January, May

The objective of this MBA is to develop a new generation of hospitality professionals and executives who are able to respond effectively to the challenges of the modern hospitality sector.

The course will provide you with an opportunity to develop relevant senior strategic leadership expertise and skills.

You will develop in-depth knowledge and understanding informed by current practice, scholarship and research, including critical awareness of current issues and developments in the subjects and profession. You will also gain a greater appreciation of the significance of the interrelationship of functional areas to the overall success of a business, in international, national and local markets.

Senior industry professionals were directly involved in the design and development of this course, and their desire for a combination of academic learning, work experience, and application of learning to the real world of hospitality management is reflected in the structure and content.

The course offers you the opportunity for professional development at a postgraduate level while maintaining and enhancing your contribution to your employer. This includes a range of transferable executive skills including: leadership, strategic decision making, problem-solving, change management, creativity, innovation and entrepreneurship, management accounting, digital marketing and modern talent management.

Career Development

The course is designed for hospitality professionals who are in management, or executive management positions, and who are seeking to broaden their strategic leadership expertise.

The academic experience provided to you on this course ensures the development of a number of your key transferable skills, such as team working, critical evaluation, benchmarking, appreciation of diversity and cross-cultural management, plus the synthesise of theory and practice.

While studying on the programme, students will be registered as Associate Members of the Institute of Hospitality with corresponding professional benefits.

Assessment

Assessment is through a combination of assignments designed to have a strong practical and professional orientation. Your learning culminates with a Major Project Report based on identifying and developing solutions within the hospitality sector.

Module Guide

The following are the core modules:

- Strategic Human Resource Management
- Entrepreneurship and Innovation in Hospitality
- Hospitality Management Business Performance and Risk
- Quality and Organisational Excellence in Hospitality
- Strategic Management in Global Context
- Leadership of Change
- Digital Marketing in Hospitality
- Research Methods and Ethics
- Postgraduate Major Project

Skills & development

The course has been designed and coordinated to take a holistic perspective and include the latest thinking and development in hospitality and business. Preparation for an executive role is implicit throughout the degree and you will be required to apply your skills and knowledge to your workplace as an integral part of the assessment of the course.

You will benefit from

The programme focuses on an interactive blended learning approach delivered through creatively designed classroom activities supplemented by on-line videos, lectures and exercises.

The course will also offer you the chance to meet senior hospitality leaders, academics, guest lecturers as well as participate in hospitality related industry visits.

Key features of the MBA Hospitality Management course include:

- Content informed by the Anglia Ruskin London Hospitality Management Industry Advisory panel
- Embedded work-based, experiential and simulation assessments
- Tutors who have worked as hospitality managers and have research or consultancy interests in the sector

MSc International Project Management

Quick Facts

Campus: London

Duration: 1 Year (Full-time) or 2 years (Part-time)

Available Starts: September, January, May

The course focuses on practical advanced concepts, processes and techniques required to manage projects within today's complex business environment.

Professional project managers are in significant demand in the United Kingdom and internationally. The Programme Leader together with a team of multi-disciplinary academics have designed this course with the needs of modern professional project managers in mind. This postgraduate degree will enable you to explore project management in a wide range of contexts, including long-run public sector infrastructure projects and short-to-medium-term projects in private sector businesses, public sector organisations and not-for-profit organisations.

The course content is balanced, with critical modules on research, leadership, law, innovation, change management and an understanding of the global project management environment. The course has a practical emphasis rather than an overtly academic or theoretical approach, it is pivotal because the project management function is required to deliver hard and measurable results. Thus the course emphasises the synthesis of the practical and the theoretical. Students will be required to identify, evaluate and develop key project management skills.

Career Development

In today's competitive jobs market, graduates need to stand out from the crowd to successfully secure that all important first full-time job after university. We believe your postgraduate degree from ARU London will significantly enhance your employability:

- Your lecturers all have first-hand experience of project management and some continue to work in the sector. You are therefore assured that the content of your degree will be directly relevant to the demanding, constantly evolving world of contemporary project management practice. Furthermore, you will study project management from a practical as well as from an academic perspective.
- During your studies there will be the opportunity to participate in the Employability Scheme with the specific objective of enhancing your future employment prospects. This includes CV workshops, interview techniques, career counselling and visits from prospective employers.

Module Guide

The following are the core modules:

- Project Risk Management
- Legal and Ethical Aspects of Project Management
- Principles of Project Management
- Entrepreneurship and Innovation Management
- Leading Projects
- Applied Project Management Solutions
- Strategy in the Public and Private Sectors
- Research Methods and Ethics
- Business Improvement and Change
- Postgraduate Major Project

Assessment

ARUL employs assignments, presentations, and examinations to measure student progress, along with an innovative case study major project or dissertation to complete the course.

The Major Project involves detailed research, analysis and reporting of a project management related issue.



Skills & development

Students will be required to explore and practise sophisticated commercial, financial, legal and operational aspects of the profession and develop an effective project leadership "toolkit".

You will benefit from

Accreditation by the Association for Project Management (APM) means that you will have access to their resources, communities of learning and communities of practice.

Strong partnerships with leading employers, creating possible placement opportunities.

Lecturers who have worked as project managers in industry and have research and consultancy practices.



APM Accreditation is a widely recognised mark of quality for organisations, training providers and academic institutions. It offers assurance for those wanting to access the best project management professional development services available.



MSc International Marketing

Quick Facts

Campus: London

Duration: 1 Year (Full-time) or 2 years (Part-time)

Available Starts: September, January, May

This course focuses on three key disciplines - digital marketing, leadership and entrepreneurship applied in an international context.

This postgraduate degree is designed for marketing professionals and entrepreneurs who aim to improve their employability skills and theoretical knowledge of business and marketing. You will develop the skills and knowledge needed to develop a career in marketing.

The course has been designed for today's modern marketer. Modules have been chosen to reflect the needs of marketing professionals, specifically digital marketing; understanding the global customers and brand psychology. The course is made up of 8 modules, all covering a wide range of aspects within marketing. The strategic marketing and new venture development module will give you the practical skills to launch a new product or service onto the market, this module will be delivered in conjunction with more traditional dissertation which will develop the academic skills required of a postgraduate student.

Career Development

This programme has been developed by academics, together with senior industry professionals, to encapsulate the exact requirements that are required by global marketing organisations. The course is designed to deliver exciting, relevant and forward thinking modules which will give students the skills and knowledge to fulfil their potential and further their career. Moreover, an MSc will provide the opportunity to progress to a DBA or PhD.

During your studies, there will be the opportunity to participate in the Employability Scheme with the specific objective of enhancing your future employment prospects. This includes CV workshops, interview techniques, career counselling and visits from prospective employers.

Module Guide

The following are the core modules:

- International Leadership and Entrepreneurship
- International Marketing, Innovation and E-Commerce
- Digital Marketing
- Understanding the Global Customer
- Brand Psychology
- Strategic Management in a Global Context
- Research Methods and Ethics
- Strategic Marketing and New Venture Development
- Postgraduate Major Project

Assessment

All assessment are by module assignments based on the eight taught modules together with a dissertation based on an organisation that the candidate is intimately familiar with, or their own business.



What to expect

The course boasts a team of outstanding lecturers with exemplary academic knowledge coupled with external industry experts. Content and delivery methods are exciting, relevant and rewarding.

Each of the modules will examine three common and integrated themes:

- Internationalisation
- Digital Marketing
- Entrepreneurship

You will benefit from

The programme has been developed after consultation with employers and the CIM to meet the requirements needed for a career in marketing or business ownership.

The modules have been written and coordinated to take a holistic perspective and include the latest thinking and development in marketing. Preparation for an executive role is implicit throughout the degree with all students required to apply their skills and knowledge to their workplace as an integral part of the assessment of the course. The key theme of entrepreneurship will be central throughout the programme.

Entry requirements

At ARU London, we assess all applications on individual merit and ability, taking into account many factors. We look at academic history, interests and achievements as well as commitment, enthusiasm and references.

Undergraduate degree entry requirements

Our standard offer is 104 UCAS tariff points from 3 A levels, e.g. BCC.

A Level or equivalent

Normally, we will expect you to have undertaken at least two years successful post-16 study. Please refer to the course pages for course-specific entry requirements. We will also expect you to have Maths and English GCSE grade C/4 or above.

BTEC Diplomas

For all courses, we are happy to accept tariff points from BTEC qualifications.

Access to HE Diploma

For all courses, we will consider applicants with the Access to HE Diploma. Please refer to the course specific page for the UCAS Tariff points required for your course.

Other qualifications

We are happy to consider other qualifications including, amongst others, the International Baccalaureate, Irish Leaving Certificate, Welsh Baccalaureate, Scottish Highers or Advance Highers and a range of equivalent EU qualifications. We also recognise foundation and pathway courses provided by many other UK universities and colleges.

Applicants studying for other qualifications should contact ARU London to discuss their circumstances.

Our published entry requirements are a guide only and our decision will be based on your overall suitability for the course.

EU applicants

We welcome applicants from students from EU countries. Please refer to the link below for guidance on the EU entry requirements for our courses - www.lca.anglia.ac.uk/entry-requirements

Mature candidates

We welcome applications from mature students (those aged 21 and over at registration) for the wealth of life experience they bring to their studies. Mature applicants can apply without formal entry qualifications as long as they can demonstrate appropriate, relevant work experience.

Whatever your motivation, we recognise that the decision to return to education after a break is usually a big one, it is the start of a new journey which can lead you to achieve dreams and goals which you may not have thought are possible.

English language requirements for non-UK applicants

Students whose first language is not English and who have not previously studied in the UK are required to have IELTS 6.0 with a minimum of 5.5 for each sub-test or equivalent.

Postgraduate degree entry requirements

A first degree of 2:2 or above plus relevant experience.

If English is not your first language you will be expected to demonstrate a certificated level of proficiency of at least IELTS 6.5 or equivalent English Language qualification, as recognised by Anglia Ruskin University London.

How to calculate your points

A level	
Grade	Tariff
A*A*A*	168
A*A*A	160
A*AA	152
AAA	144
AAB	136
ABB	128
BBB	120
BBC	112
BCC	104
CCC	96
CCD	88
CDD	80
DDD	72

BTEC Extended Diploma	
Grade	Tariff
D*D*D*	168
D*D*D	160
D*DD	152
DDD	144
DDM	128
DMM	112
MMM	96
MMP	80



Applying to ARU London

To apply to study for a full-time undergraduate course all applications from UK and EU students should be made through the Universities and Colleges Admissions Services (UCAS). Go to ucas.com and click "Apply and Track" to use the online application system.

International applicant

If you are applying from outside the UK and EU please create an application on our online application system found on our website - www.lca.anglia.ac.uk/how-to-apply

When to apply

The normal closing date for the receipt of on-time applications for both Home/EU and International applicants is 15 January 2019. We will continue to consider applications made through UCAS after 15 January as long as places remain available.

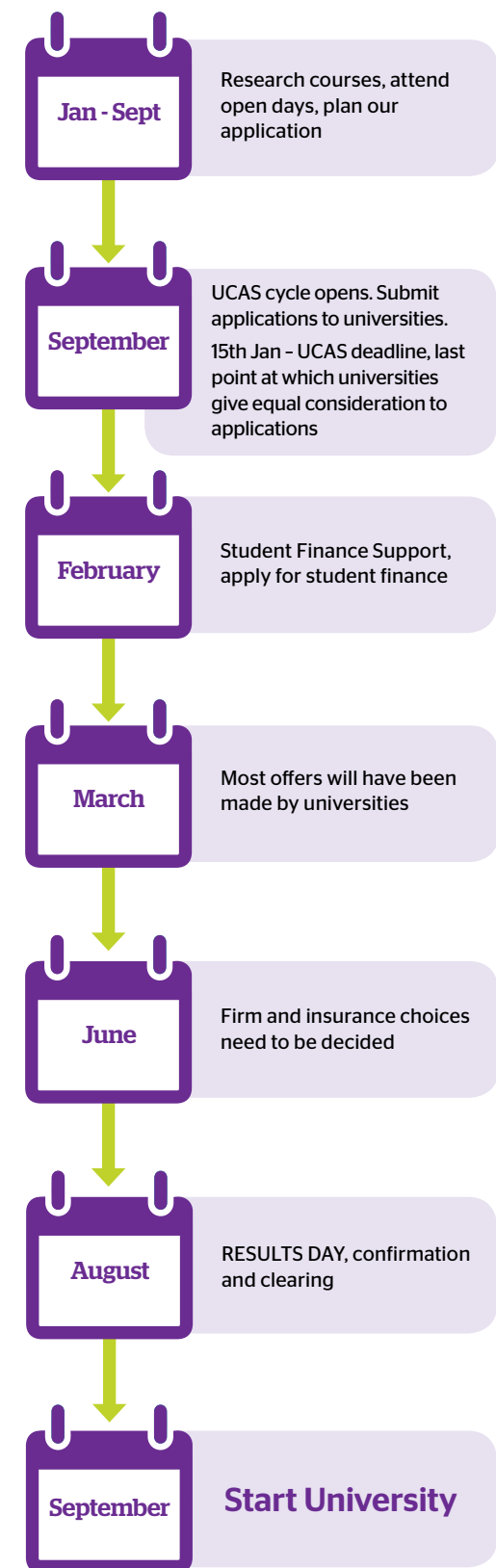
Our UCAS codes

If you decide you would like to apply to ARU London for one of our courses, please take care to enter ARU London's institutional code and your chosen course correctly.

The institution code for ARU London is L63.

Postgraduate applicants

Candidates should visit the ARU London website and complete the online application - www.lca.anglia.ac.uk/how-to-apply



Student Finance, Fees and Scholarships

5 facts about Undergraduate Student Loans

1 If you are from the UK/EU you can apply for a Student Loan

2 You won't start paying back the loan until you earn over £25,000, if your income falls below £25,000 your repayments automatically stop

3 When you start to repay your loan it's at a rate of 9% of what you earn over £25,000.

4 It must be your first Undergraduate degree; if you already have a degree you will not be eligible

5 Depending on your circumstances you may be eligible to apply for a Maintenance Grant or Special Support Grant, to check what you may be able to receive use the Student Finance calculator www.gov.uk/student-finance-calculator

What is a tuition fee loan?

Tuition Fee Loans are obtained from Student Finance England and are used to pay the cost of your tuition fees.

You apply for a Tuition Fee Loan through Student Finance England; please refer to the website www.gov.uk/student-finance to check deadlines and eligibility. Tuition Fee Loans are paid back after you finish your course and you are earning over £25,000 a year. For more information and helpful guides please look at our website - www.lca.anglia.ac.uk/funding_your_studies

What is a Maintenance Loan?

Maintenance Loans are obtained from Student Finance England and are available for students to help contribute towards living costs. The amount Student Finance will loan you can depend on certain factors:

- Where you live when you study (at the parental home, away from home in London or elsewhere)
- Your family household income (this is called 'income assessment')

You don't have to pay the loan back until you have graduated and are earning over £25,000 per year.

Our fees

Our fees and scholarships will be reviewed for 2019/20 entry and could be subject to change (including changes due to government policy). At time of print our 2019/20 entry fees for UK and EU students are:

Undergraduate

- £9,250 a year for a course leading to a degree (BSc)

Postgraduate

- £8,500 for all MBA's and MSc degrees

Postgraduate Loan

The Postgraduate loan (PGL) is a loan of up to £10,906 for new Postgraduate students starting in 2019/20. You may be eligible for a Postgraduate Loan if you:

- Are aged under 60 on the first day of the academic year
- Don't already hold a Masters qualification (or equivalent or higher level qualification)
- Are a UK National or individual with settled status in the UK or ordinarily resident in the UK and Ireland for three years on the first day of the first academic year of your course.
- Or are an EU national, have the residency status of refugee, humanitarian protection, EEA or Swiss migrant worker, or a family member of any of the previous categories or a child of Swiss national or Turkish worker.

You will be able to apply for a PGL on the Student Finance website - www.logon.slc.co.uk. If you already have an account with Student Finance England from an undergraduate loan you should use this to apply for the PGL. If you are eligible for the PGL it will be paid directly into your UK bank account in three equal instalments each academic year.

Scholarships

Undergraduate

Entry Scholarship - A £1000 scholarship in your first year could be available.

- If you are from the UK/EU you would need to achieve 144 (AAA) UCAS points.
- If you are an International student you will need to achieve A+ grade or a minimum of 80% or GPA 5.0 in your A Levels or equivalent qualifications.

Top Achievers - Scholarships of £2000 are available for the overall top achievers in Year 0, Year 1 and Year 2.

Each year a number of scholarships are available to our top achievers throughout all courses and modules. The winners are presented their scholarships during our Top Achievers event which is hosted twice a year. The scholarship is applied to your next academic year tuition fees.

Postgraduate

Entry Scholarship - £1000 off the entire course fee, if you achieve a First Class honours degree from a university in the UK.

Alumni Scholarship - £2000 off the entire course fee, if you studied your Undergraduate degree at any Anglia Ruskin University campus.

International Students

ARU London has decades of experience of welcoming international students from all over the world.

Studying at ARU London


We fully understand the particular needs of international students and so aim to ensure that we provide the extra support that's sometimes needed. The focus at ARU London is very much on your future employability; we do all we can to ensure that your programme of study serves as a direct route into your chosen career. ARU London students are entitled to work up to 20 hours a week during term time and full-time during university holidays.

Applying for a course as an international student

To apply online you can create an application here - www.lca.anglia.ac.uk/how-to-apply. You can also apply via UCAS using the relevant course code.

When submitting an application you will need to provide the following documents: qualifications certificates and transcripts, a personal statement, references, copy of your passport and curriculum vitae/resume.

We accept a wide range of international qualifications. For guidance on whether your qualification will meet our entry requirements please have a look at our website where you will find a guide for international entry requirements - www.lca.anglia.ac.uk/entry-requirements

Overall, **91.3%** 

of international students are satisfied with their experience here at ARU*

* International Student Barometer, 2015

English language requirements

To demonstrate proficiency in English language, ARU London recognises a number of formal tests. The most widely available English language test is IELTS.

For undergraduate degree programmes you'll need to achieve at least IELTS 6.0 with 5.5 in each sub-test. For postgraduate degree programmes you'll need to achieve at least IELTS 6.5 with a minimum of 5.5 in each sub-test.

If you have any questions regarding our English language requirements please email - admissions@lca.anglia.ac.uk.

We also provide our own English Language Proficiency Test (ELPT); this gives you an opportunity to display your English level when applying to ARU London if you haven't taken an English language test before. To book yourself on the test please email - admissions@lca.anglia.ac.uk.

Visas and Immigration

We are a registered sponsor under Tier 4 of the UK's points-based immigration system. We can issue the necessary documentation to assist students in obtaining entry clearance to the UK.

Our fees

Our fees and scholarships will be reviewed for 2019/20 entry and could be subject to change (including changes due to government policy). At time of print our 2019/20 entry fees for international students are:

Undergraduate

- £11,000 a year for a course leading to a degree (BSc)

Tel: 020 7400 6784

Email: enquiry@lca.anglia.ac.uk

lca.anglia.ac.uk

 **twitter.com/arulondon**

 **facebook.com/londonARU**