



Sizing Forms and Information

METHOD 1

Use your body measurements and the Leather Finished Garment Measurement Chart to determine your size.

Use the guide below to take and record your body measurements. With using this method, keep in mind that when ordering leather garments you must leave room for WEARING EASE to give your body room for movement since leather does not stretch. Once you know your body measurements, use the Suggested Wearing Ease guidelines below to determine how much wearing ease should be in the bust, waist and hip area. Add those numbers to your bust, waist and hip measurement and use the **Leather Finished Garment Measurement Chart** below to determine the best size to order.

Suggested Wearing Ease:

Bust area – Add 2 to 4 inches to the bust measurement. The larger the size the more ease to factor in.

Waist area – Add ½ to 1 ½ inches to allow for turning around, bending and raising arms.

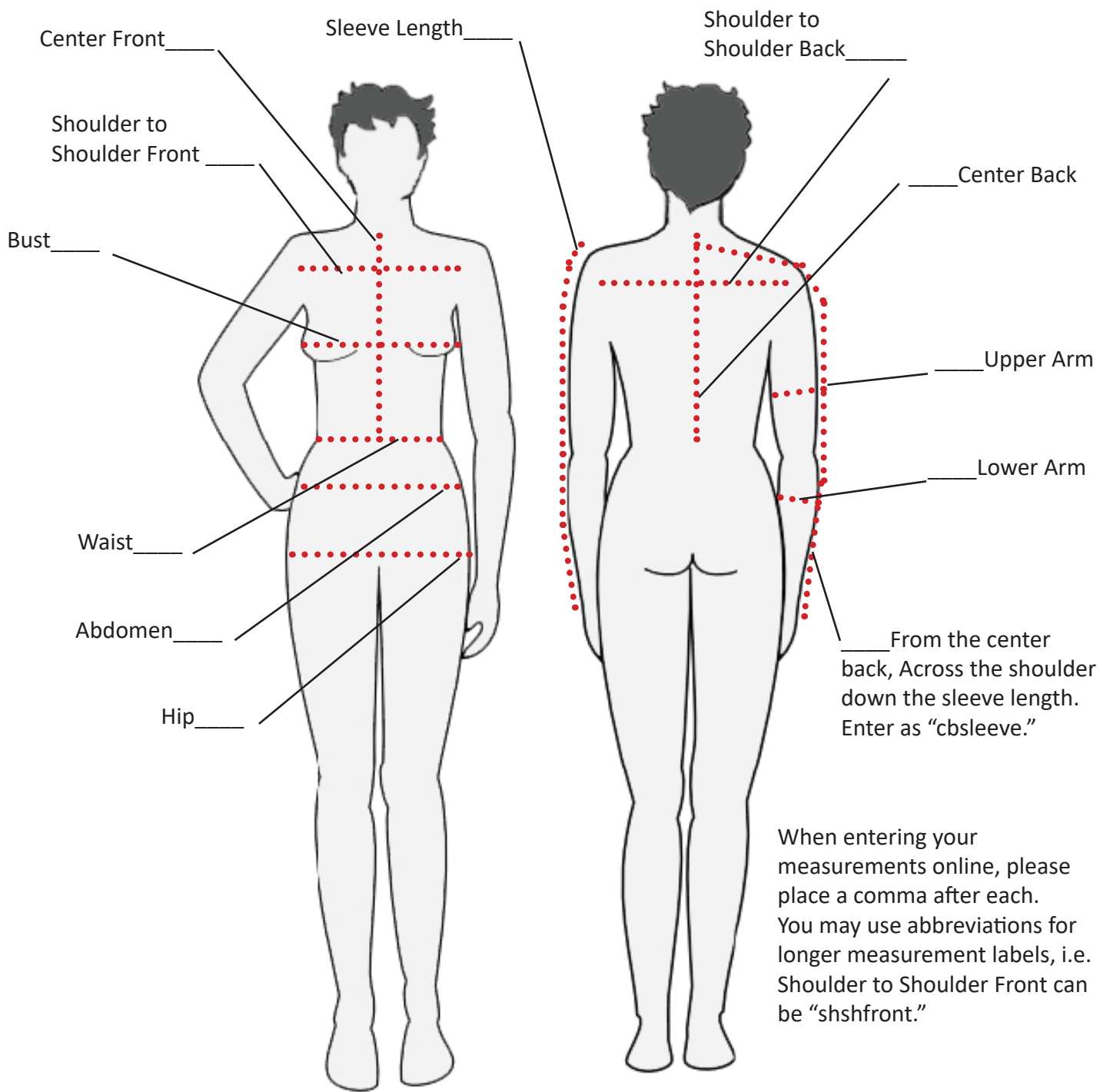
Hip area – Add 2 to 4 inches, again, the larger the body size, the more ease to consider.

When you place your order, where you select your size, you also have the option to select “Body Measurements Provided.” You can enter your measurements where indicated, OR you can simply email the form containing your measurements to us at fit@mgballarddesigns.com. Once we have your measurements, we can help you determine the best size to use for constructing your garment.

Leather Finished Garment Measurement Chart

| | Small | | Med | | Large | | XL | 2X | 3X | |
|--|-------|-----|-----|-----|-------|----|-----|-----|-----|----|
| | 6 | 8 | 10 | 12 | 14 | 16 | 18 | 20 | 22 | 24 |
| Bust (Jacket) | 39 | 40 | 42 | 44 | 47 | 48 | 50 | 52 | 55 | 56 |
| Shoulder to Shoulder Front | 15 | 15½ | 15½ | 16½ | 16½ | 17 | 17½ | 18 | 18½ | 19 |
| Shoulder to Shoulder Back | 15 | 15½ | 15½ | 16½ | 16½ | 17 | 17½ | 18 | 18½ | 19 |
| Jacket Upper Arm | 14 | 15 | 16 | 16 | 17 | 18 | 18 | 20 | 21½ | 22 |
| Sleeve length | 21½ | 22 | 22 | 22 | 22¾ | 23 | 23½ | 24½ | 24½ | 25 |
| Waist with Elastic Relaxed | 22 | 24 | 26 | 28 | 30 | 32 | 34 | 36 | 38 | 40 |
| Waist with Elastic Comfortably Expanded (for skirts) | 26 | 28 | 30 | 32 | 34 | 36 | 38 | 40 | 42 | 44 |
| Abdomen (4" below waist) | 34 | 36 | 38 | 40 | 42 | 44 | 46 | 48 | 50 | 52 |
| Hip | 36 | 38 | 40 | 42 | 44 | 46 | 48 | 50 | 52 | 54 |

M.G. Ballard Designs | Body Measurement Guide



When entering your measurements online, please place a comma after each. You may use abbreviations for longer measurement labels, i.e. Shoulder to Shoulder Front can be "shshfront."

Name: _____

Email Address: _____

Best Contact Phone Number: _____

Date Order Placed: _____

METHOD 2

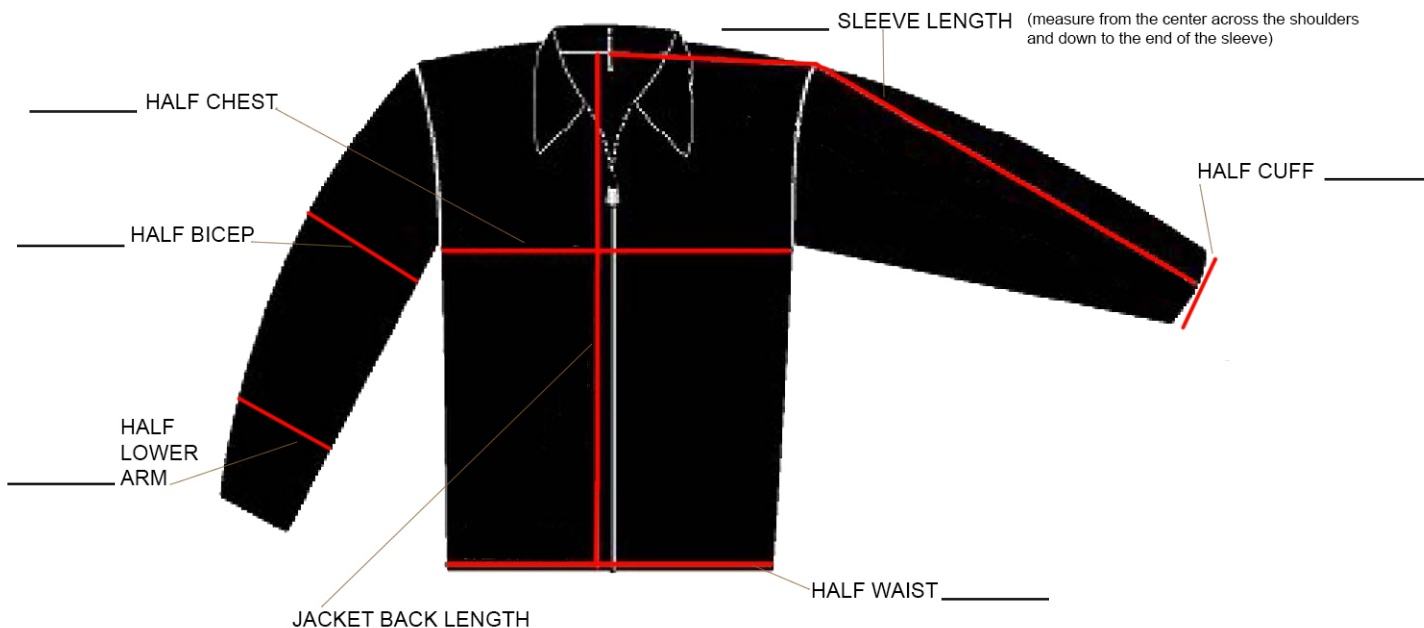
Using Garment Measurements

Use the measurements of a garment that fits you well from your own closet. When using this method, you simply find a garment in your closet that fits you well and has a style similar to the garment you are ordering (ex. a fitted jacket if you are ordering a fitted jacket). Lay the garment flat on a surface where you can spread out the garment as shown (ex. a table or a bed) Measure it in the areas indicated on the guide below. We will double the number for the measurements where it says "HALF" to get the total number of inches.

When you place your order, where you select your size, select the option that says "Garment Measurements Provided." Enter the measurements where indicated making sure to place a comma after each. You can use abbreviations and/or shorten the measurement labels, i.e Hbust 18, Hwaist 14, etc.

You can also simply email the appropriate **Garment Measurement Guide** below containing your measurements and contact information to us at fit@mgballarddesigns.com. Your garment will be made using the measurements you provide to us. We will contact you if we have any questions about the information you provided.

M.G. Ballard Designs | Garment Measurement Guide (For Men's Jackets)



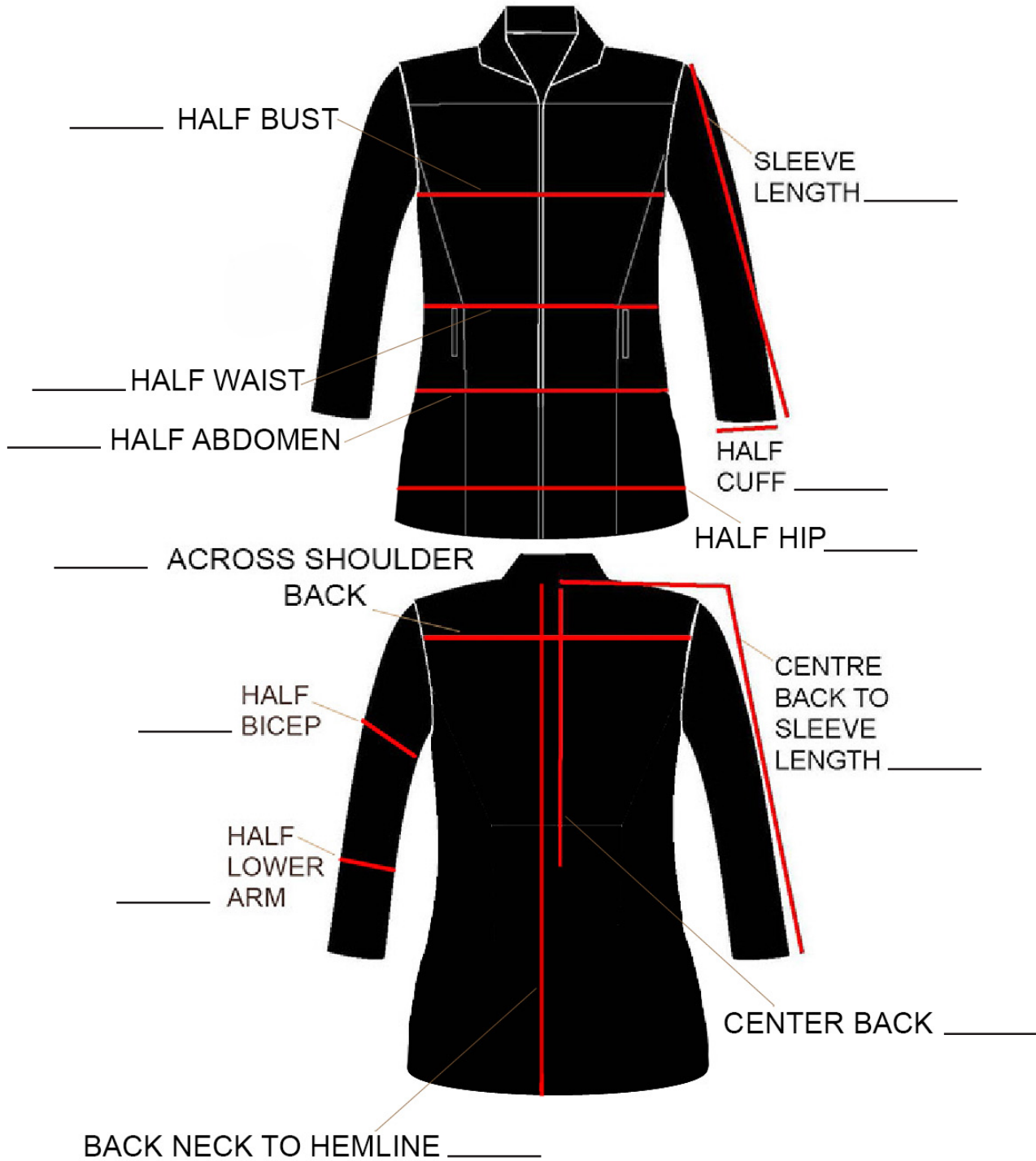
Name: _____

Email Address: _____

Best Contact Phone Number: _____

Date Order Placed: _____

M.G. Ballard Designs | Garment Measurement Guide (For Women's Coats & Jackets)



Name: _____

Email Address: _____

Best Contact Phone Number: _____

Date Order Placed: _____