

Eido Connect

30th
Year

Heart of
Eido Country

EMAILS: MOTT - eido@ndsupernet.com • BOWMAN - connect@ndsupernet.com

FREE Online at eidoconnect.com

Box 247 Mott, North Dakota 58646 • Box 97 Bowman, North Dakota 58623
Mott - 1-701-824-2605 or 1-888-522-2605 - Bowman 1-701-523-4577 or 1-866-523-4577
Mott FAX: 701-824-2927 - Bowman FAX: 701-523-4579

PRSR STD.
US POSTAGE PAID
EIDO
ECR WSS
POSTAL CUSTOMER

Vol. 30 No. 25 - Saturday, April 6, 2024

Eido Connect's
Philosophy for 2024

- DECISION -

“The Sight of ???”

Watch for these circulars in
your area for this week!

H & L Super Valu - Buffalo
Kennedy's Foods - Hettinger
Menard's Inc.
New England Community Store -
New England
Oien Grocery - Mott
Regent Co-op - Regent
R Family Market - Elgin
Scranton Super Valu - Scranton
Runnings - Baker
Runnings - Hettinger
Woodleys Construction - Bowman



Thank You for
sending in
pictures!
could
use
more pictures

MeMe took the picture, folded it - looked around - more than could be comprehended, walked to the car - - as a robot - turned the key and drove off.

Still trying to put the pieces together as to the life now living - - computers, Internet - - turned on radio - - switched it off - -.

Now what? MeMe had been chosen to help solve some unseen problems, by winning the opportunity of living in the Time Machine

for a year and was to bring back all that was learned - which was most interesting, exciting and rewarding - - but now - -, all the excitement of every place visited - - every lesson learned and passed on - - seemed very trivial compared to the feelings that exploded when reading the letter and finding this picture - -.

Why this picture? ran wild in MeMe's mind - - was it something special - was it someone met at one of the places on the journey in the Time Machine?

Not sure, but MeMe knew the answer must be somewhere - - guess I'll read Grandpas book - - maybe there's a picture in his story book - -.

Book - MeMe screamed! in the process of finding the picture, reading the letter - - trying to understand all this new information the book was forgotten.

Storm clouds rising in the sky, storm warning, heard before finding picture, reminded MeMe maybe it was time to go back to Time Machine - tomorrow I can go back - -.

Exhausted, entering Time Machine just before rains came - - bolts of lightening filling Time machine, MeMe tried pushing a few buttons - - maybe could find something to take mind off of storm



- - that's the one - perfect - - pushed button and crack - - a bolt of lightening hit the top of Time Machine, knocking MeMe to the floor.

MeMe woke to a beautiful garden, looked around - - nothing was familiar - - must not have been here before - - thought MeMe - - sure is beautiful - wonder where - want to be sure to put this place in Time Machine - No - - maybe I want to stay here.

Birds chirping - - geese flying overhead - fragrance of fresh rain, flowers - - MeMe just walked around, taking in all the brain could fathom.

Then hearing the rassel of the bushes - - MeMe caught the sight of a - - the picture - - the picture was walking, coming closer. MeMes heart skipped a beat - - how could the picture walk - - where was this place - - beauty, peace and pictures that walk?

The picture smiled, laughed, hugged and welcomed MeMe - - heart about to burst with love radiating from the picture - -.

Knock on the Time Machine door - - you okay MeMe? - - brought MeMe back to reality - - head a little sore but - -.

EMAILS: MOTT - eido@ndsupernet.com • BOWMAN - connect@ndsupernet.com

FREE Online at eidoconnect.com

Eido Connect

the only place in this area with

100% coverage!!!!!!!



Funny Thought

This week funny thought - Jesus scared the crap out of people because he was alive, new, something different but look how blessed we are because of him!

How about us - what would happen, if we see a new face in our community, and we talked to them - like Jesus did on Road to Emmaus - -.

Try it - **Eido Country** has the best people in the world, so once again thank you for owning a business here - shopping here and loving this **Eido Country**.

Bowman Theater
 28 S. Main Street
 Bowman, ND
 701-979-5603
 bowmantheater@gmail.com
 bowmantheater.org

Ghostbusters: Frozen Empire
 Rated: PG-13 • Run time: 1 hour 56 minutes

Apr. 5th - 7th & 12th - 14th
 Friday • 7:30pm
 Saturday • 7:30pm
 Sunday • 2pm
 (with subtitles if needed)

The Spengler family returns to the iconic New York City firehouse where the original Ghostbusters have taken ghost-busting to the next level. When the discovery of an ancient artifact unleashes an evil force, Ghostbusters new and old must unite to protect their home and save the world from a second ice age.

Week 1 Sponsor:
Baker Furniture

Upcoming Movies:
 Unsung Hero (4/26 & 5/3), IF, The Garfield Movie, Inside Out 2, Despicable Me 4, T. Rex (A story on a locally found dinosaur!)
 Schedule subject to change.

Adults: \$8.00
 Students/Seniors/Vets: \$6.00

• Sunday: BYOB (bring your own bag)
 • Now accepting Credit Cards

Eido Connect
 we're here to help you grow your business!

11,800 copies MAILED EACH WEEK

Custom Grain & Seed
 We Are Your Trusted Seed Advisors
 If you don't see what you are looking for, CALL US we can Research It!

0% Financing Options Available

CROPLAN By WinField IP UNITED	LCS	Durum AAC Spitfire AAC Stronghold CDC Defy	Spring Wheat CP3099A, CP3188, CP3530, LCS Ascent, LCS Dual, Sy Valda, LCS Buster, AAC Concord, AP Gunsmoke CL, SY Murdock, LCS Rebel, LCS Cannon, Faller	Small Grains Canola Corn Peas Lentils Silage Corn Inoculants Biologicals
GoldenHarvest	AGRIPro	Forage Barley Lavina	Yellow Peas AAC Chrome Orchestra	Sunflowers Seed Treatments Soybeans Flax Custom Mixes Forage Crops
Meridian	InVigor	Flax AAC Marvelous	Forage Oats Bayler	Lentils Viceroy
DEKALB	ASGROW	Oats Jury		

From PLANNING to PLANTING

- > ND Certified Seed Conditioner & Bulk retail facilities.
- > Custom seed treating
- > Custom Seed cleaning (Langdon)

Doug Preskey
SALES/REGIONAL DIRECTOR
Central/Western ND
701-339-1230

Tyler Kostecky
HETTINGER, ND
701-260-5677

Al Heinert
MANDAN, ND
701-425-3249

Ethan Bakken
LIGNITE, ND
701-310-5007

Craig Heinert
KEENE, ND
701-220-6838

WWW.CUSTOMGRAINSEED.COM

Eido Connect
 we're here to help you grow your business!

11,800 copies MAILED EACH WEEK!

The largest publication in the area!

Allow Us To Put *SPRING* Back In Your Step!

No more need to worry about cleaning the flower beds, picking up the yard, and mowing the grass. Those worries are all gone once you move into our full service facility. Mott Health Care Center provides:

24-hour nursing care	3 nutritious meals per day with snacks
Medication management	Social activities
Freedom to come and go	In-town bussing to appointments
Personal care services	Onsite beautician/cosmetologist
Private rooms	Group residential setting

Our fully trained staff welcomes you to visit our renovated facility to see what the buzz is about. We also invite you to call and visit with Kirsten or Jodi to get more information.

****COMING SOON—**
 On-site medical clinic

MOTT HEALTH CARE CENTER
 401 Millionaire Avenue
 Mott, ND 58646
 701.824.3222 ph
 www.motthealthcarecenter.com

Knowledge speaks, but wisdom listens.

Zion's Annual Church Dinner

Ham
Fried Chicken
Meatballs

Sunday, April 7
11:00 - 1:30

Elgin Community Center

Au gratin potatoes
Salads
Desserts

Free Will Donation

Proceeds to Country Community Cupboard, Ministry on the Margins, and Zion Women

3-30-4-6

Playhouse Theater
318 Brown Ave, Mott, ND

Thursday 7:00 pm • Friday 7:30 pm
Saturday 7:30 pm • Sunday 2:00 pm

4 DAYS!
NOTE THE THURSDAY TIME **April 4-7**

SOMEONE LIKE YOU

After the tragic loss of his best friend, a grieving young architect launches a search for her secret twin sister.

Rated PG • Romance/Drama • Runtime 1h 58m

CHAMPION SUPPORTER
Reich Farms

UPCOMING MOVIES
• Cabrini
• Ghost Busters: Frozen Empire
• Godzilla

TICKET PRICES
12 years and older • \$7
4-11 years • \$6

BCDC Offers Class at Mainspace

Bowman County Development Corporation (BCDC), in partnership with North Dakota Small Business Development Centers, is offering an Advanced Excel class at Mainspace (13 E Divide, Bowman) on Tuesday, April 16 from 12:00-1:30pm. The cost of the class is \$30 per person and includes lunch.

This class takes those that are proficient at the basic

functions of Microsoft Excel to building their advanced skill in charts, pivot tables, conditional formatting, TEST function and if statements. This class is instructed by Brosz Engineering.

To sign up for this Advanced Excel class, visit gomainspace.com/classes to register or call the BCDC office at 701-523-5880.

About Bowman County Development Corporation:

Bowman County Development Corporation is a non-profit

located in Bowman, N.D. It provides resources and tools that enable individuals, businesses, and community organizations to succeed. Through Bowman County Development Corporation's determination, it is creating a reach that goes beyond county lines for the prosperity of the region.

Section 324 Notice. Adams County Noth Dakota

In compliance with federal law, the Adams County Local Emergency Planning Committee LEPC) gives notice that the Adams County Emergency Operations Plan, which includes the Emergency and Hazardous Chemical Inventory (Tier II)

Reports and Material Safety Data Sheets (MSDS), have been received and reviewed by the Adams County LEPC.

The LEPC has reviewed these documents, along with the Hazardous Materials Response Plan for Adams County to better prepare for, respond to, and recover from hazardous materials. Appropriate portions of these documents are available for public inspection in accordance with state law along with the Hazardous Material Response Plan at the Adams County Emergency Management Office at

609 2nd Ave N ST #1, Hettinger, ND 58639

Frank E Fettig
Adams County Emergency Manager
4-6,13

DOUG ELLISON TALK

Same Time, Same Place, Different Date

DUE TO UNFORESEEN CIRCUMSTANCES, DOUG ELLISON'S TALK HAS BEEN RESCHEDULED FOR SUNDAY, MAY 12 @ 2 PM IN THE FRONTIER ROOM OF PIONEER TRAILS REGIONAL MUSEUM.

12 1st Ave NE Bowman, ND 58623

BE GRATEFUL

FREE Storm & Cloud Recognition Weather Spotter Training

Bowman County Emergency Management will be hosting a Severe Weather Training In conjunction with the National Weather Service

Monday, April 15th
7:00 pm MDT

Bowman County Courthouse Commissioner's room

This Seminar is about how to recognize storm clouds, tornados and other severe weather and will last about one and a half hours.

For additional information please contact the Bowman County Office of Emergency Management at (701) 523-4771.

Bethany Lutheran's Annual Pancake Supper & Bake Sale

Sunday, April 14th

Church Service at 4pm
Pancake Supper & Bake Sale to follow

• Free Will Offering •

Bethany Church is located 10 miles south of Rhame

Enjoy Bethany's famous pancakes and fellowship with family, friends and neighbors

PO Box 114
Bowman, ND 58623
meowscatrescue@gmail.com
meowscatrescue.org
701.979.5602
Donate via Venmo or PayPal:
@meowscatrescue

Featured Cat: MOCHA
DOB: 2/19/2021 (estimate) Vetting: vaccinated, dewormed, flea/ear mite treated
Sex: Female (Spayed)
Color: Black/Tan

Announcements

- In **DESPERATE** need of Clumping litter, wet food and Purina Cat Chow
- Be a featured sponsor!
- Calling all Adopters, Fosters, and Volunteers!
- New t-shirts available.
- Trapping season is underway: WATCH FOR POSTINGS
- CLOSED TO INTAKES AT THIS TIME.

Mocha is sweet and sassy. She is a lovebug with an attitude. She loves to snuggle, purr, and nap. Mocha loves people and does great with children but despises dogs and barely tolerates other cats. She is a queen and she knows it! Mocha would do wonderfully in a home all her own with a family to give her undivided attention to.

SPONSOR: DEBBIE PATTERSON

Support your communities - they care about you!

A successful man is one who can lay a firm foundation with the bricks others have thrown at him.

PLEASE JOIN US FOR A



Bridal SHOWER

HONORING
Elise Fischer

APRIL 14 1:00

ST. CHARLES CATHOLIC CHURCH
BOWMAN

THEKNOT.COM/CONNERANDELISE

St. Vincent's
St. Henry's
St. John the Baptist
Catholic Church
Schedule for
Sat. April 6
Sun. April 7

(M) 4:30 pm Sat.
(NL) 7:00 pm. Sat.
(R) 8:00 am. Sun.
(M) 10:00 am. Sun.

What's next?

By Kathy Craig Harteis

One by one we have accepted downsizing, new rules and additions to now taboo things we previously enjoyed.

Today I heard a report that there is a cocoa shortage and the price of chocolate candy will soar.

The candy companies have already downsized the size of the treats. I'm sure now they'll be smaller yet.

Not to age myself, but I'm now one of those people who remembers a better, full size candy bar that was cheap.

As kids, when we finished our chores we each got a quarter. We would walk to the local grocery and purchase a soda and a candy bar.

I always picked a Double Cola because the bottle design gave the illusion of being bigger. My candy of choice was varied, but it was always full sized.

Give a kid a quarter now and they wouldn't get much.

Yesterday I stopped at a good sized market to get a few groceries. Approaching the checkout I saw one cashier with six people waiting for checkout. There was one cashier with 5 other closed checkout lanes. There was a self checkout area, but that just annoys me.

I come from a time of service oriented business. That being said, my mindset is if I've lived this long I deserve the service.

Gone are the days (except in Oregon) of full service gas stations.

The bottom line is that it's all a domino effect. Rising prices, shortages and loss of services stem from the fact that people don't want to work anymore. That is a direct insult to our forefathers and foremothers who did nothing but work.

Sadly we've educated ourselves to take the easy way, take the shortcut and accept the inferior.

To end the day I picked up two deli sandwiches. Typically we would each be full after eating one half of the giant sandwiches. Say it isn't so! Our once loved sandwiches have been downsized. We easily finished the whole thing.

I guess I should have known how my week was going to go earlier this week. For the first time, I got hit in the head by a melting ice cycle in March!

But yet, life is good today.



Emily Grist Wins Lions International Peace Poster Contest

For over three decades, Lions clubs around the globe have been sponsoring an incredibly special art contest in schools and youth groups. This year's Lions International Peace Poster Contest Theme was "Dare to Dream."

Congratulations to Mott-Regent Public School Sixth Grader, Emily Grist, for being selected for first place at the North Dakota Lions State Convention. Her Peace Poster will be in the 2024-2025 calendar which will be released after July 1, 2024!

Pictured here is Emily Grist with Mott Lions club member, Kari Mayer, and Sharon Larson, secretary/treasurer.

For more information on Lions Club International or their Peace Poster Contest, go to <https://www.lionsclubs.org>



Southwest PUBLIC TRANSIT

Servicing Adams, Bowman, Hettinger & Slope Counties

In-Town Trips Daily
Call to schedule
Bowman 701-523-3241
Hettinger 701-567-2476

Out-of-Town Trips Weekly
Call to schedule
800-280-0204

OPEN TO THE PUBLIC

Mott Food Pantry FOR MOTT AREA ONLY

212 Iowa Ave.
(located in the alley)
will be open
Friday, April 12, 2024
12:00 Noon until 1:00 PM
Any questions call 824-3209



INTEGRITY ENTERPRISES LLC

Chad Gappert, Owner/Operator
701-219-5595

New Septic System Installation and Existing System Repairs, Sewer and Water Installer, Water Pipelines, Rural Water Installer, Water Well Contractor, Tree Line Removal, Snow Removal, all Things Dirt Work

Licensed and Insured

the LUNCH MENU

27 N MAIN - BOWMAN, ND

APRIL 8
Pulled Pork Southern Style with Slaw and Wedges

APRIL 9
Silver Dollar's Chicken Fried Steak with Mashed Potatoes, Gravy & Carrots

APRIL 10
All you can eat Salad Bar, with Soup of the day!
We also have a full Menu!
Our Salad Bar is Always Open Monday - Saturday

APRIL 11
Indian Tacos! We think you'll Love Them!!
We've been working on our bread and we have it perfected!

APRIL 12
Malibu Chicken
Grilled Chicken Breast with Swiss Cheese and Pineapple

APRIL 13
Hand Cut Sirloin Steak Hoagie with Onions, Peppers, Cheese & Au jus
Served All Day!

APRIL 14
Enjoy Our Sunday Breakfast Buffet with all of your Favorite Items & Eggs to Order!
Let us do the cooking! Rest & Relax!

Full Menu available Saturday.
The Deck will be Open Soon!

In the middle of difficulty lies opportunity.

I may not be able to change the world I see around me, but I can change the way I see the world within me.



APOLLONIA DENTAL

WE'LL GIVE YOU
A REASON TO SMILE

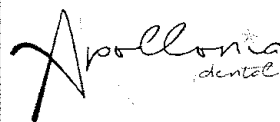
Mott - Dr. Kristen

Monday

8:00 AM to 4:00 PM

Friday

9:00 AM to 2:00 PM



Dickinson - Dr. Kristen

Tuesday - Thursday

7:00 AM to 4:00 PM

Phone: 1-800-932-8755 • 701-824-2991 • 701-483-0857



Resurrection People

Debbie Molbert, Synodically
Authorized Minister
Reeder Lutheran Parish
Reeder, Bucyrus and Ralph

Blessed be the God and Father of our Lord Jesus Christ! By his great mercy he has given us a new birth into a living hope through the resurrection of Jesus Christ from the dead and into the inheritance that is imperishable, and unfading, kept in heaven for you. 1 Peter 1:3-4

This verse made me think of Easter, as that is the season we are in for the next few weeks. And yet Easter, the resurrection is a once and for all, and forever. We are resurrection people, living in hope through the resurrection of Jesus Christ. It is because of the death and crucifixion, and resurrection of Jesus that we have hope in Him, that goes beyond anything we can imagine.

Hope... That is what came to mind in writing for Expressions of Hope. It is a word we use a lot, are familiar with. Such as, I hope you feel better, I hope my car starts, I hope you have a good day, I hope my team wins. You know the hopes. This is what I call earthly hopes.

But, then there is heavenly hope. The One in whom our hope lies. The Bible talks a lot about this hope. In searching I found, there are over 140 verses about hope in the Bible.

One could think of the story of Abraham. In his waiting, and we know there was waiting and some real obstacles in his way, but hope kept him strong and going. Romans 4:18-21 says, Hoping, against hope, he believed that he would become "the father of many nations,"

according to what was said, "So shall your descendants be." He did not weaken in faith when he considered his own body, which was already as good as dead (for he was about a hundred years old), and the barrenness of Sarah's womb. No distrust made him waver concerning the promise of God, but he grew strong in his faith as he gave glory to God, being fully convinced that God was able to do what he had promised.

Hoping against hope, he believed. There had to be times he wondered how this would be, but, what happens? His faith grew stronger. Promises were kept.

Hope and faith seem to go hand in hand. One writer put it, faith is grounded in the reality of the past; hope is looking to the reality of the future. Without faith, there is no hope, and without hope there is no faith.

Hope is the soil our faith is planted in. Hope helps us in the waiting, and faith keeps us heading in the right direction.

Romans 12:12; be joyful in hope, patient in affliction, faithful in prayer. When God is the source of hope, our faith is stronger.

Life doesn't come with an instruction manual, but it does come with the words of a loving, compassionate, caring Father who walks along side of us in everything we face and go through. There is always hope and assurance because of the resurrection of our Lord. The Bible tells us so. So, we do have a manual. Good news!

Now, may the God of hope fill you with all joy and peace in believing, so that you will abound in hope by the power of the Holy Spirit. Romans 15:13



A Little Birdie Told Me

By: Vivian Hernandez

Little Birdie Told Me: "The Easter Bread Saga Continues."

On Good Friday my Daughter and I stopped to see my Sister, she was busy making Easter Bread with her daughter on 3 granddaughters. Each of the little girls had dyed their dough a different color and it was time to knead the dough. The dough was then placed in plastic bowls and put in the oven on warm to rise a second time. My Sister realized all too late she'd forgotten to shut the oven off, by this time the dough had raised nicely and the plastic bowls had melted onto the oven racks and the bottom of the oven! The oven racks were tossed into a snow bank to cool and then the plastic scraped off. The dough was saved and placed in metal bowls to rise for the last time. Second fail of the day she forgot to add the anise flavoring to the dough, a nice glaze with anise saved the day.

Sunday felt like one of the coldest Easters I remember, no outdoor Easter egg hunt for

us. We went to 8:00 am Mass in Bismarck and arrived early because church is always full on Easter Sunday even with 5 services just at the Cathedral alone. When we arrived there were cars everywhere and it was only 7:30, unaware that the 6:45 am Mass wasn't over yet we marched right in and sat down. This turned out to be to our advantage, we just remained in our pew and had great seats for the 8:00 am Mass.

It happens every Easter and Christmas, churches are filled to overflowing; but why? If we truly believe as Christians that Jesus Christ the Son of God came to earth as an infant, lived, suffered, died and rose on Easter Sunday to save us, why do we only show up twice a year?

A Little Birdie Told Me: "Christianity, if false, is of no importance, and if true, of infinite importance. The only thing it cannot be is moderately important." (CS Lewis lived from 1898 until 1963, a British writer, literary scholar and Anglican lay theologian.)

Bowman Chiropractic Clinic
James O. Stafford D.C.

• Manual • Activator
• Acupuncture

15 N. Main St.
Bowman, ND 58623

701-523-4830



A personalized financial approach based on your values.

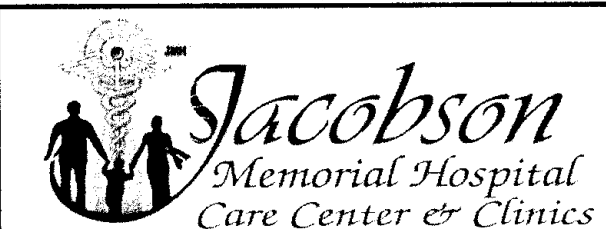


Bryan Clendenen
FIC, CLTC®
Financial Associate
112 N Main St
Bowman, ND 58623
701-523-3953



Thrivent was named one of the "World's Most Ethical Companies" by Ethisphere 12 years in a row.

"World's Most Ethical Companies" and "Ethisphere" names and marks are registered trademarks of Ethisphere LLC. For details, visit worldsmoestethicalcompanies.com. 27193 R4-23



Are you loyal, driven, and compassionate? Join our team of like-minded people.

Daycare Coordinator
Full-time. This position will be responsible for all functions and employees of the daycare. This position is eligible for a \$3,000 sign on bonus.

Receptionist in Richardton
Full-time, 32 hrs per week, \$3000 sign on bonus

Compliance Officer
Full-time, 32 hours per week. \$4,000 sign on bonus.

Maintenance Assistant
Full-time, 32-40 hours per week. \$4,000 sign on bonus.

Registered Nurse (RN)/Licensed Practical Nurse (LPN) at Glen Ullin Clinic
Full time, 32-40 hours per week. \$7,500 sign on bonus and \$25,000 student loan repayment program.

CNA
Two full-time, 1 day shift, 1 evening position; eligible for \$4,000 sign on bonus.

Radiology Tech
2 Full-time radiology techs, rotating nights, weekends, and holidays call. Must have a radiology degree, willing to train in CT. This position is eligible for a \$10,000 sign on bonus and \$25,000 student loan repayment.

All full-time and part-time positions are eligible for our competitive benefits package.
Contact Chris at (701) 584-7247 or cgathr@jmhcc.org to apply.
JMHCC is an equal opportunity employer.

USDA is an equal opportunity employer, provider, and lender.

Start your CAREER with the

USDA Farm Service Agency

FSA Career Opportunity in Hettinger, ND
Adams County Executive Director in Training
Apply online at <https://www.usajobs.gov/job/783526200>

Position offers extensive benefits, competitive salary and promotion potential.
FSA provides a wide array of government programs for farmers & ranchers. If you are a self-motivated individual who enjoys leading a team in a professional office setting, this position is for you!

Applications must be submitted by Wednesday, April 10, 2024

Please contact Brooke Kessel at 701-567-2462 for more information

TIGER HEATING & AIR LLC

Serving New England, ND & Surrounding Areas!

Austin Maershbecker
701.290.5457
tigerheatingandairllc@gmail.com

thru 4-20pd

TRANSPORTATION SERVICES AVAILABLE EVERY WEDNESDAY FROM HETTINGER TO DICKINSON STARTING APRIL 3RD FOR MEDICAL APPOINTMENTS, SHOPPING TRIPS, ETC.

1-800-280-0204

(WE WILL CONTINUE TO OFFER RIDES TO DICKINSON ON OTHER DAYS OF THE WEEK)

Southwest PUBLIC TRANSIT

**Don't wish it were easier; wish you were better.
Don't wish for less problems; wish for more skills.
Don't wish for less challenges; wish for more wisdom.**

Wisdom is not a product of schooling but of the lifelong attempt to acquire it.



Darrell West, Paramedic, West River Ambulance Manager
Representatives from Gaumard Trauma Simulators

West River Health Services Receives a \$40,000 Rural Community Grant

AgriBank, AgCountry Farm Credit Services, and Farm Credit Services of Mandan collectively pledged \$40,000.00 from the Rural Community Grant Fund to support West River Health Services in acquiring an Advanced Life Support Trauma Simulator. The Rural Grant Fund, established by AgriBank and its North Dakota Farm Credit partners, aims to assist communities affected by mineral development

in the Bakken region.

The Trauma Simulators will provide high-quality training that meets the most varied training requirements and needs for rural medicine. The Physicians, Nurses, Residents, ROME Students, EMS professionals, and various community members such as Law Enforcement, Firemen, and Teachers will benefit.

The versatile multi-training equipment is essential not only for the education of Adams County but also for the neighboring communities supported by West River Ambulance. A rural training facility equipped with such a diverse simulator

will greatly improve our capacity to serve the entire region.

Our service area is considered "Frontier." Very rural areas are short-staffed and cannot find a fill-in during their absence for training at an urban training center. Medical training of various types is crucial in rural areas. Skills are fine-tuned at home, where we can still be available for the people we serve.

"West River Ambulance extends its sincere gratitude to AgriBank for their generous grant, which has facilitated the acquisition of a Trauma Hal training simulator manikin and the Code Blue Pediatric simulator. These simulators enable our EMS and WRHS medical staff to undergo training on critical life-threatening scenarios, including traumatic amputations with simulated blood loss, utilizing tourniquets and direct pressure dressings, as well as cardiac-related events such as cardiac arrest, CPR, IVs, IO, and chest decompressions. The real-time feedback provided during training enhances our staff's skills and preparedness. We eagerly anticipate extending this training to our community, covering topics such as cardiac arrest and Stop the Bleed. Without the invaluable support from AgriBank, we would not have been able to introduce these highly realistic training tools to our community," states Darrell West, Paramedic and West River Ambulance Manager.

THE TIME IS ALWAYS RIGHT TO DO WHAT IS RIGHT

For Sale: 14 Registered Black Angus Bulls and 1 not registered.

These bulls include bloodlines of Sitz Stellar 726D (Good hip and stylish), Sitz Accomplishment 720 F (Good rib and growth), Sitz Resilient Grandsons (Low Birthweight, eye appealing) and Barstow Cash grandsons (Good Performance). These bulls present themselves very well. These bulls sell on

Wednesday, May 1 at Lemmon Livestock's All Breed Bull Sale.

Sale time is Pre-Noon to Noon. Call Lemmon Livestock (605-374-3877) for exact time.

The following Spreadsheet information gives more detailed information on each bull. If questions call

**Terry Week
701-876-9288, Beach ND**

<p>Lot 107 Calf Reg. # 20793255 BD: 1/18/23 BW: 82 Sire: Sitz Stell Mat. Sire Mus B Sky Dam's WR 5 @ 108 PF Adj. WW 661 BW EPD 1 WW EPD 69 YW EPD 119 Milk EPD 22</p>	<p>Lot 105 Calf Reg. # 20793255 BD: 1/22/23 BW: 77 Sire: Sitz Stell Mat. Sire Mus B Sky Dam's WR 5 @ 102 Adj. WW 639 BW EPD 0.1 WW EPD 63 YW EPD 108 Milk EPD 22</p>	<p>Lot 140 Calf Reg. # 20793254 BD: 1/16/23 BW: 83 Sire: Sitz Stell Mat. Sire Bald 38 Spec Dam's WR 2 @ 105 Adj. WW 600 BW EPD 0.6 WW EPD 67 YW EPD 116 Milk EPD 21</p>
---	--	---

<p>Lot 110 Calf Reg. # 20793253 BD: 1/12/23 BW: 85 Sire: Sitz Accom Mat. Sire PV Express Dam's WR 4 @ 97 Adj. WW 649 BW EPD 0.4 WW EPD 61 YW EPD 109 Milk EPD 21</p>	<p>Lot 120 Calf Reg. # 20793251 BD: 1/4/23 BW: 82 Sire: Sitz Accom Mat. Sire Mogck Bull E Dam's WR 4 @ 100 Adj. WW 623 BW EPD 1 WW EPD 67 YW EPD 118 Milk EPD 23</p>	<p>Lot 154 Calf Reg. # 20793257 BD: 2/22/23 BW: 76 Sire: HCC Resilient Mat. Sire Weeks Pathfdr Dam's WR 1 @ 95 Adj. WW 627 BW EPD -0.1 WW EPD 61 YW EPD 103 Milk EPD 29</p>
--	--	---

<p>Lot 152 Calf Reg. # 20793258 BD: 2/22/23 BW: 68 Sire: HCC Resilient Mat. Sire Weeks Pathfdr Dam's WR 1 @ 96 Adj. WW 636 BW EPD -1.8 WW EPD 60 YW EPD 98 Milk EPD 27</p>	<p>Lot 109 Calf Reg. # 20793265 BD: 3/24/23 BW: 76 Sire: HCC Resilient Mat. Sire Hoover Dam Dam's WR 5 @ 96 Adj. WW 535 BW EPD 0.1 WW EPD 59 YW EPD 102 Milk EPD 27</p>	<p>Lot 106 Calf Reg. # 20793259 BD: 2/27/23 BW: 83 Sire: Deppe Gaf Cash Mat. Sire Conn Blk Gran Dam's WR 5 @ 100 Adj. WW 631 BW EPD 2.7 WW EPD 71 YW EPD 118 Milk EPD 24</p>
--	---	--

<p>Lot 5D Calf Reg. Not Reg. BD: 2/17/23 BW: 87 Sire: Deppe Gaf Cash Commercial Cow Adj. WW 645</p>	<p>Lot 145 Calf Reg. # 20793263 BD: 3/8/23 BW: 78 Sire: Deppe Gaf Cash Mat. Sire Weeks Bullseye Dam's WR 2 @ 95 Adj. WW 591 BW EPD 3 WW EPD 69 YW EPD 117 Milk EPD 26</p>	<p>Lot 144 Calf Reg. # 20793264 BD: 3/9/23 BW: 84 Sire: Deppe Gaf Cash Mat. Sire Weeks Bullseye Dam's WR 2 @ 96 Adj. WW 573 BW EPD 3.7 WW EPD 68 YW EPD 115 Milk EPD 27</p>
---	---	---

<p>Lot 142 Calf Reg. # 20793266 BD: 3/25/23 BW: 74 Sire: Deppe Gaf Cash Mat. Sire Barstow Bankroll Dam's WR 2 @ 110 Adj. WW 645 BW EPD 1.5 WW EPD 70 YW EPD 120 Milk EPD 26</p>	<p>Lot 77 Calf Reg. # 20793262 BD: 3/5/23 BW: 87 Sire: Deppe Gaf Cash Mat. Sire Sav Iron Mtn Dam's WR 2 @ 101 Adj. WW 666 BW EPD 3.1 WW EPD 69 YW EPD 115 Milk EPD 22</p>	<p>Lot 72 Calf Reg. # 20793260 BD: 2/27/23 BW: 75 Sire: Mill Bar Hickock Mat. Sire Kesslers Frontman Dam's WR 10 @ 106PF Adj. WW 580 BW EPD 1.3 WW EPD 52 YW EPD 89 Milk EPD 33</p>
---	---	---

FAIRFIELD AREA FARM & RANCH EQUIPMENT AUCTION
Saturday June 8, 2024

Located at Fairfield, ND - former G L Trucking site
To consign call
Gordy 701-290-9755

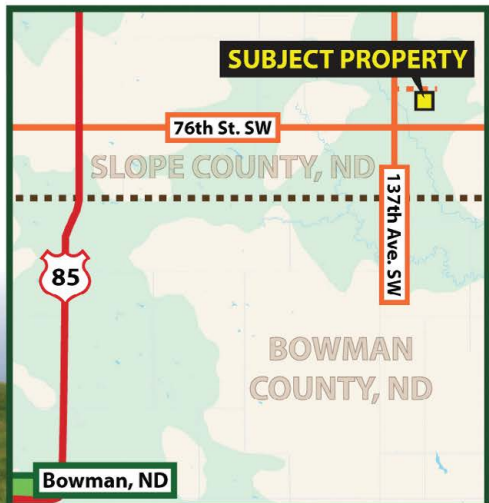
KRANCE AUCTIONS SERVICE LLC,
Lic. 444
website www.kranceauctions.com
thru 4-13

160 +/- Acres • Slope County, ND

LAND AUCTION

Wednesday, April 10, 2024 – 4:00 p.m. (MT)
LOCATION: Pifer's Regional Office: 709 12th St. NE • Bowman, ND

- 141.25 +/- Crop Acres
- Legal: NE¼ 23-133-100
- Prime Hunting Land
- Grazing Opportunities
- Online Bidding Available



OWNER: Keller Family

STOCK PHOTO

This sale is managed by Pifer's Auction & Realty, Kevin Pifer, ND #715 All statements made the day of the auction take precedence over all printed materials. The seller reserves the right to reject or accept any and all bids.

Pifer's
LAND AUCTIONS
www.pifers.com



Andy Mrnak | 701.206.1095
Jim Sabe | 701.523.6283

3-16,30-4-6

Sometimes silence is the best answer

21 ANGUS
BLACK ANGUS BULLS
For Sale Private Treaty

Top Quality Genetics.
 Semen Tested
 Ready to Go

Call
21 Angus Ranch
 Marc Wolf
 701-579-4221/701-290-4221



Vermeer
Laufer Vermeer

Mobil 1 Oil
\$6.99 Quart

Mobil Del Vac
\$17.99 Gallon

Lemmon/Hettinger



by
Pat Merriman
 Attorneys at Law
 Pat Merriman
 &
 David Crane
 701-824-2591



A recent spike in hurt feelings becoming the demand for criminal charging has become a head-scratcher because I thought all of us Boomers and Millennials had actually attended civics classes in school and understood the basic human rights enumerated in our federal Constitution. Apparently, I was wrong. This new insidious creature comes in the guise of another one of those "progressive" phrases—truth relativism. Huh? Yeah, in their never-ending objective quest to muddle up the language, these folks have coined the neuro-philosophical equivalent of moral relativism where when someone makes a CLAIM, that claim is made true or false, not by objective facts but, rather, by what that claimant subjectively believes or how they feel. I hearken back to my little brother Terry who, circa 1969, at age 9, watched the film Mary Poppins and, subjectively, believed that if he jumped off the roof of our 2-story garage with a beach umbrella, he would float to the ground. One broken ankle later, my Dad summed it up best when he punished me (the oldest brother) as being responsible for not negating my kid brother's opinion—"I thought YOU were smarter than that!"

abiding American into a criminal simply because they have offended someone not because it is objectively (and reasonably) a crime. Of course, while ignoring actual crimes against persons/property because of "fundamental fairness" or ill-defined equity. And, not only making that defendant expend thousands of dollars (of their or taxpayer's) money defending against such charges but, also calling them out and publicly shunning them, in the "court of public opinion", because they have simply been charged. Say what now?

Our North Dakota model instructions, based on the precise language of §§29-21-05 and 31-11-03[1] informs every juror that a "Defendant is PRESUMED to be innocent unless the contrary, the Defendant's guilt, is proved beyond a reasonable doubt. If the State has not proved the Defendant's guilt beyond a reasonable doubt, you MUST find the Defendant not guilty." Translation, until he/she pleads guilty or a judge/jury renders that verdict, the person is 100% innocent. PERIOD! A criminal charge means nothing more than an accusation. And, that has been "the law" since Coffin v. United States when the US Supreme Court ruled that in 1895. That's 129 years for those who slept through math. So, regardless as to someone's personal "truth", that is the objective truth—the only truth that actually matters. And, as Master Chief was fond of saying, "A man with experience is never at the mercy of a man with an opinion". Have a great week!

This "subjective truth" nonsense hit fever pitch during the COVID. I watched in fascination as the neuro-typicals (normal people) let their subject opinions not only scare themselves to death but, also turn on their neighbors. This has now morphed into trying to pursue actual criminal charges, i.e., trying to turn an otherwise law-

Trinity Lutheran Church
Mott, ND

Sunday
 Adult Bible Study - 9:30 AM
 Sunday School - 9:45 AM
 Worship Service - 10:45 AM

LEMMON LIVESTOCK, INC.
Phone: 605-374-3877

Due to advertising deadlines, we will only be running our upcoming sale schedules on our report.
 If you go to our website www.lemmonlivestock.com you can view our market report and other information there.
 Or find us on facebook under Lemmon Livestock!

**Follow us on facebook under Lemmon Livestock!
 APRIL 10, WED: REGULAR SALE
 Mkt Cows/Bulls @ 11:00, Feeder Cattle @ 12:00

APRIL 17, WED: REGULAR SALE
 APRIL 24, WED: REGULAR SALE

MAY 1, WED: REGULAR SALE W/LEMMON LIVESTOCK ALL BREEDS BULL SALE & SPECIAL ALL BREEDS CALF SALE & BRED COW/PAIR SALE

You can listen to our weekly radio report at www.kbjm.com, click on the Lemmon Livestock link
 You can watch & buy during the sale live every week by going to www.cattleusa.com, register and apply to bid. If you have any problems with this process please call Lemmon Livestock.

CATTLE RECEIVING STATION:
 C & D Yards, Baker MT
 *****Receiving Station Contact:
 CURT WILLIAMS, Baker Field Rep-
 (406)778-3773 or (406)978-2520
C & D YARDS- (406)778-3282

*YOU CAN REACH US ON THE INTERNET AT
www.lemmonlivestock.com
 or you may e-mail us at lemmonlivestock@sdplains.com

We can also be found on facebook under Lemmon Livestock
 You can also find us on the DTN under Auction Markets

IF YOU HAVE LIVESTOCK TO CONSIGN OR WOULD LIKE US TO STOP AT YOUR RANCH

PLEASE CALL LEMMON LIVESTOCK AT 605-374-3877 OR 1-800-822-8853, FAX 605-374-3215

ROWDY BENSON	605-524-9642, Cell 605-569-1493
BRADY HAM	605-374-5385, Cell 605-431-9118
CURT WILLIAMS	C & D YARDS, BAKER FIELD REP. 406-778-3282, Cell #406-978-2520
JED SEIM	FIELD REP. 605-431-1985
MIKE DRAYTON	FIELD REP. 605-569-1347
VICKI FOGERTY	OFFICE MANAGER 605-374-5105
JODI JOHNSON	OFFICE 605-374-3684

Thank a Farmer/Rancher today for planting his money and allowing it to turn into food for the world!

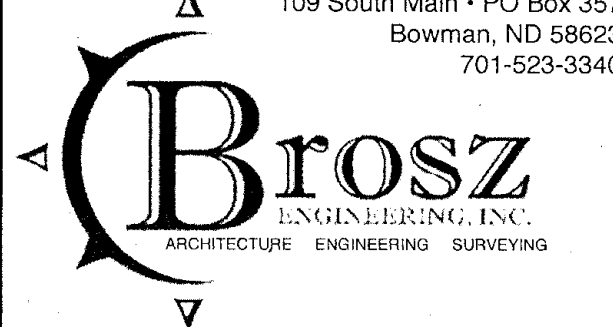
Home for Sale by Owner
 Call (701) 300.2015 for more information and/or check out our Bismanonline.com and Zillow listings.

505 Iowa Ave, Mott, ND



109 South Main • PO Box 357
 Bowman, ND 58623
 701-523-3340

Brosz
 ENGINEERING, INC.
 ARCHITECTURE ENGINEERING SURVEYING

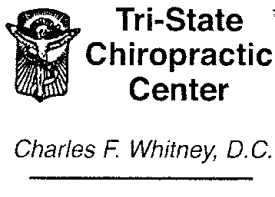


Focus
 EYE CARE

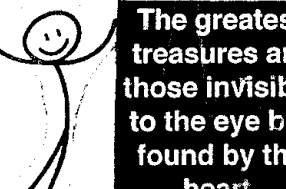
701-523-7707
 16 W. Divide • Bowman, ND



Tri-State Chiropractic Center
 Charles F. Whitney, D.C.
 Office Hours by Appt.
 111 4th St. NW
 PO Box 176
 Bowman, ND 58623
 701-523-3239



The greatest treasures are those invisible to the eye but found by the heart.



True Treatment
 (701) 690-1762
 Get pain relief and regain control of your life with **Physical Therapy!**
 Located in Mott, ND
 Arrive. Strive. Thrive



Jim's Repair & Implement
 Bowman, ND
 701-523-5579

Farm Tractors & Equipment Repair
 Interstate Batteries
 Cray Products

Jim - 701-523-3372
 Sheldon - 701-206-1190



280 +/- Acres • Golden Valley County, ND
LAND AUCTION
 Monday, April 15, 2024 – 7:00 p.m. (MT)
 AUCTION LOCATION: Roosevelt Grand Dakota Hotel • Dickinson, ND

- 178.47 +/- Crop Acres (Currently in Grass, Estimate)
- 74.49 +/- Pasture/Hunting Acres (Estimate)
- Legal: W½ less NE¼NW¼ 10-139-104
- Soil Productivity Index of 65
- Southwest Water on the Property
- Available in 2024
- Great Access off County Rd. #11
- Online Bidding Available

SENTINEL BUTTE, ND



SUBJECT PROPERTY

STOCK PHOTO
OWNER: Sentinel Butte Land Company, LLP

This sale is managed by Pifer's Auction Company, Kevin Pifer, ND #715. All statements made the day of the auction take precedence over all printed materials. The seller reserves the right to accept or reject any and all bids. Seller to reserve all sub-surface minerals.

Pifer's LAND AUCTIONS
www.pifers.com

Kevin Pifer • 701.238.5810
 Jack Pifer • 701.261.4762



Learn to help people with more than just their jobs; help them with their lives.

Wisdom is knowing what to do next. Skill is knowing how to do it. Virtue is doing it.



The experts at Cashway Building Center have years of experience and have been in operation for over 40 years! Cashway is known for the ability to provide customers quality workmanship, competitive prices and friendly service. We are available now to start your spring and summer projects!

Call or stop in. We'd be happy to help!

CASHWAY BUILDING CENTER

Hwy 12 E. • Bowman, ND
701-523-3801



St. Jude's Novena
May the Sacred Heart of Jesus be adored, glorified, loved, and preserved throughout the world now and forever. Sacred heart of Jesus, pray for us: St. Jude, worker of Miracles, pray for us. St. Jude, helper of hopeless, pray for us. Say this prayer for nine times a day - by the eight day, the prayer will be answered. It has never been known to fail. Publication must be promised.

SC

BOWMAN LIVESTOCK Marketing

www.bowmanlivestockmarketing.com

Field Reps:
Wayne Miller • 701-279-6649
cell: 701-523-6885
Austin Visser • 701-659-0172
Ross Carson • 701-690-2534
Brandon Richard • 701-290-6544
Kyle Getz • 701-440-1731

Auctioneers:
Seth Weishaar • 605-210-1124
Curt Westland • 605-210-3329

Phone: 701-523-5922 • 1-877-211-0600
Hwy. 85 South • PO Box 58 • Bowman, ND 58623

Austin Snook, Owner/Manager • 307-290-2161

Upcoming Sales
Saturday, April 6 - Brooks Chalky Butte Bull Sale
Monday, April 8 - Regular All Class Cattle Sale, Plus Sheep & Goats, Open Horse Sale
Monday, April 15 - Regular All Class Cattle Sale
Monday, April 22 - Regular All Class Cattle Sale
Friday, April 26 - Medicine Rock/Spring Angus Bull Sale
Monday, April 29 - Regular All Class Cattle Sale

No Sale • April 1, 2024

For complete market reports & updated consignment lists visit us on Facebook or bowmanlivestockmarketing.com

MARK YOUR CALENDARS' FOR OUR

16TH ANNUAL PRODUCTION SALE!

APRIL 17, 2024

BELFIELD, ND

REQUEST A SALE BOOK AT:
OPENANGUS.COM

TELLAN STEFFAN 701-260-0412 | PO BOX 556 MEDORA, ND 58645

3-30-4-6.13

2024 Business of the Year
FRONTIER TRAVEL CENTER

CHAMBER CHOICE AWARDS

FINNEMAN FARM RETIREMENT AUCTION

Tuesday, April 16, 2024 – 10:00 a.m. (MT)
AUCTION LOCATION: 3198 Hwy. #16 • Beach, ND

2013 Case IH Patriot
4430 Sprayer

2010 Case IH 535 Tractor

2016 John Deere
6175R Tractor

VISIT PIFERS.COM FOR FULL INVENTORY & ONLINE BIDDING!

2016 John Deere
S680 Combine

2011 Timppte Grain Trailer

Caterpillar 966E Payloader

OWNER: Clarence "Dooney" Finneman

This sale is managed by Pifer's Auction & Realty, Kevin Pifer, ND #715. All statements made the day of the auction take precedence over all printed materials.

Pifer's AUCTIONEERS
www.pifers.com

Jim Sabe • 701.523.6283
John Soreide • 701.206.0761
Andy Mrnak • 701.206.1095
Kevin Pifer • 701.238.5810

3-23,4,6

2024 Chamber Choice Award Honorees

Bowman Area Chamber of Commerce is pleased to announce the 2024 Chamber Choice Award Honorees. Congratulations to the 2024 Business of the Year, Frontier Travel Center and the 2024 Volunteer of the Year, Shonda Schwartz. Both go above and beyond to make our community a great place to live, and we are lucky to have them!

Frontier Travel Center exhibits great customer service and goes beyond usual business with significant involvement and contributions to the community. Frontier Travel Center is always there for us, 24/7, with all the essentials - food, fuel, coffee, and a friendly smile. In addition, you can find their staff preparing holiday meals that are much appreciated and well attended by the community and travelers alike. These services cannot happen without teamwork and the motivated staff you find at Frontier Travel Center. It takes dedication to the community and hours of planning and scheduling. Frontier Travel Center also supports area chamber events not only with donations, but also with their time and manpower. Frontier Travel Center is an asset to the community and truly deserves this recognition as the 2024 Business of the Year!

Shonda is the director of the Southwest Human Service Zone located in the Bowman County Courthouse. Shonda

works everyday for the betterment of our community. She is kind, caring, and a hard worker. She is president of the Rotary Club in Bowman, volunteers for the Lutheran Church in many ways, helps with the Giving Tree at Christmas time, and volunteers for the Family Fun Fair each year. Shonda also volunteers at the Bowman and Hettinger schools and provides free trainings to the staff and students about mental health. She is selfless, working hard and doesn't expect a thank you. The Volunteer of the Year is an individual who leads the way, serving their community by volunteering their time and talents to make Chamber sponsored events possible as well as giving to other organizations and causes. The 2024 Volunteer of the Year exemplifies this and more. For all these reasons and more, we extend a big thank you and congratulations to Shonda Schwartz our 2024 Volunteer of the Year!

Past awardees of the Business of the Year include Bowman Chiropractic (2023), Urban Obsession (2022), Bowman Regional Public Library (2021), Bronson's Marketplace & Liquor (2020).

Past awardees of the Volunteer of the Year include James Ensign (2023), Edna Paulson (2022), Josh Buchmann (2021), Chris Peterson (2020).

Kevin Miller Construction

Bowman, ND

Gravel & Scoria Sales

- Dump Truck • Excavation • Gravel Hauling
- Pay Loader • Grading Road & Site Prep.
- Scraper • Dirt Work • Culvert Sales

Kevin & Roxanne Miller
701-523-5769 (home) • 701-523-1207 (cell)

In family life, love is the oil that eases friction, the cement that binds closer together, and the music that brings harmony.



SPRUCE HILL Meats

LOCALLY RAISED, LOCALLY PROCESSED
SPRUCE HILL MEATS

Spruce Hill Meats has increased their production capabilities and has immediate Custom or USDA slaughter dates available.

OUR SERVICE:

- ✓ Custom Meat Cutting
- ✓ Quarter, Half or Whole Beef
- ✓ ND Retail & USDA Licensing that allows us to provide product for schools, restaurants or special occasions

Orders will be filled with an animal from a local producer.

For more info Call:
701-523-4799
ask for Michelle

8556 147th Ave SW • Bowman, ND 58623



DWB Photo Contest

Join our photography contest with the theme of agriculture and nature and win some prizes from us!

Please use the QR Code to enter!

Submissions will be open from April 1 - 30, 2024.



dwb dakota western bank

Member FDIC

Charle's Angels of Caring LLC

We are looking to fill:

- 2 Part-time positions
- 2 Full-time positions

HELP WANTED ★ Sign-On Bonus!

Join our team and make a difference. We provide care and companionship for elderly and disabled people in the comfort of their own home.

701.567.3173 | Hettinger, ND
Charlottelee945@gmail.com



Premier Montana Ranch

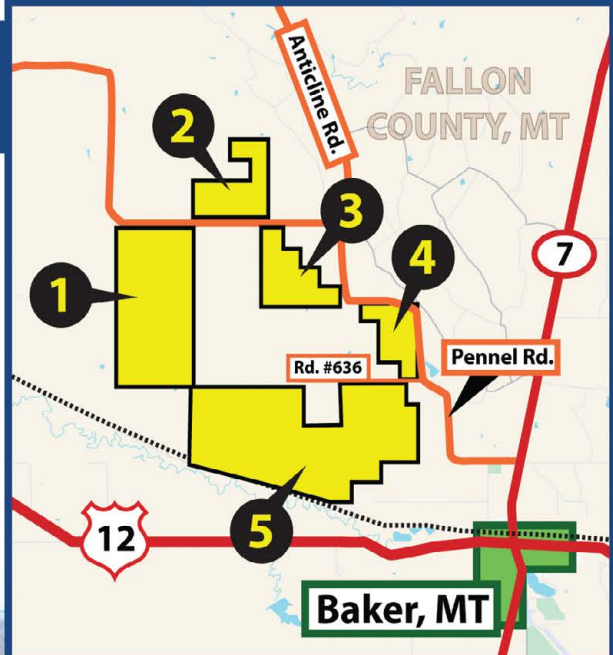
LAND AUCTION

Wednesday, May 1, 2024 – 2:00 p.m. (MT)

AUCTION LOCATION: Fallon County Fairgrounds (Exhibit Hall) • Baker, MT

4,544.9 +/- Acres
Fallon County, MT

- 543.58 +/- Crop Acres
- 4,001.32 +/- Grazing Acres
- 640 +/- Bureau of Land Management (BLM) Acres
- Strong Producing Cropland for Small Grain
- Native Grasses, Rolling Terrain & Sprawling Pastures
- Big Game Hunter's Paradise!
- Available in 2024
- Online Bidding Available




Excellent Hunting **Strong Cropland** **Rolling Pastures**

OWNER: Roberta J. Engesser Revocable Trust

This sale is managed by Pifer's Auction Company, Kevin Pifer, MT #16149. All statements made the day of the auction take precedence over all printed materials. The seller reserves the right to accept or reject any and all bids. Seller to reserve all sub-surface minerals.

Pifer's AUCTION & REALTY



Andy Mrnak • Broker Assoc.
701.206.1095 | andy@pifers.com

www.pifers.com

IN HONOR OF NATIONAL VOLUNTEERS' MONTH

Thank You

TO ALL OF OUR BOARD MEMBERS

CAROL HERBERHOLZ
CORA HILLER
CINDY KOLTES
KASEY BURKE
LINDA WEAVER
LYLE KOVAR
NEVADA TURBIVILLE
SHARI KRINKE

Southwest PUBLIC TRANSIT



Eido Connect

we're here to help you grow your business!

Whalen's Meat Packing Processing Plant - Mott, ND

has opened at 9214 Highway 21
Opening for custom exempt starting April 22nd
Booking kill dates Monday & Tuesdays every week
USDA pending final inspection
\$200.00 kill fee, \$1.10 cut and wrapped.
Your choice of cuts and packaging (plastic paper/vacuum seal)

Call us for more information
(701) 824-6328 or (407) 618-6906



Western Edge Realty Offers the Following Properties For Sale

Agricultural Properties:

- **NEW!** 408 +/- Acres of Native Prairie Pasture with Hwy Frontage – Western Sioux County, ND
Property Location: 6 miles North of Thunderhawk, SD
- **SALE PENDING!** 369.82 +/- Acres of CRP – Northwest Perkins County, SD
Property Location: 5 miles South of Hettinger, ND
- **SALE PENDING!** 1674.8 +/- Acres of Cropland, Pasture, Hayland along with Farm Improvements- SW Grant County, ND
- **SOLD!** 1160 +/- Acres of Cropland, Hayland & Pasture – Perkins Cty, SD
- **SOLD!** 317.5 +/- Acres Cedar River Property – Adams County, ND
- **SOLD!** 320 +/- Acres of Cropland – Adams County, ND

Residential Properties:

- **PRICE REDUCED!** Older Historic Home – Lemmon, SD
Address: 1 – 3rd Ave West - Lemmon, SD
Sellers offering a buyer credit for heating updates. Home features beautiful woodwork, newer detached garage and sound basement.
- **PRICE REDUCED!** 10 +/- Acre Lot Located Along SD Hwy 73 –
Location: Along SD Hwy 73 – South of Lemmon, SD
Property has Hwy 73 frontage, Perkins County Rural Water Tap and is within close proximity to Lemmon. Perfect location if you are looking for a small acreage to live in the country.
- **SOLD!** Well Maintained Single Story Home – Lemmon, SD
- **SOLD!** 10 +/- Acre Lot – Perkins County, SD
- **SOLD!** Mobile Home on One City Lot – Lemmon, SD



For more information contact:
Western Edge Realty
Sarah Weishaar – Broker Associate (701) 260-1938
Shawn Weishaar - Salesperson (701) 260-2600
Email: shwshr@sdplains.com
For complete details visit: www.weishaarsales.com

3-23,30-4-6,15

NORTHWEST SUPPLY SEMI-ANNUAL CABINET SALE



40%OFF

Suggested Retail

FREE In-house Measuring

FREE 3-D Design Services

FREE Delivery
within 100 miles

Call or stop in to get started today!

Northwest Supply Co.

Lemmon SD

605-374-3814

800-351-3815

Sale Good Through 4/20/2024

Eido

Connect

we're here to help you grow your business!

11,800 copies

MAILED

EACH

WEEK!

The

largest

publication

in the

area!

Liberty Dirtwork LLC
 Specializing In Dirtwork
 "FREE SITE ASSESSMENT"
Highest quality road gravel in Grant County
Book now limited quantities
Now hiring truck driver/heavy equipment operator
 Contact: Lee at 701-891-8212
 Isaiah - 1-701-891-8214
 Website: Libertydirtworkllc.com - Carson, ND
 Licensed and Insured

320 +/- Acres • Slope County, ND
LAND AUCTION
Wednesday, April 10, 2024 – 4:00 p.m. (MT)
 LOCATION: Pifer's Regional Office: 709 12th St. NE • Bowman, ND

- 245.36 +/- Crop Acres
- Legal: N½ 9-136-99
- Prime Hunting Land
- Philbrick Creek
- SPI of 63
- Online Bidding Available



OWNERS: Powers, Powell & Margraf Families

This sale is managed by Pifer's Auction & Realty, Kevin Pifer, ND #715 All statements made the day of the auction take precedence over all printed materials. The seller reserves the right to reject or accept any and all bids.

Pifer's
 LAND AUCTIONS
www.pifers.com

Andy Mrnak | 701.206.1095
 Jim Sabe | 701.523.6283

3-16,30-4-6

The Final Story of our Leopard Dressing Rummage Sale Queen Charlene Honeyman
 by: VR Honeyman

There are so many Thank-Yous to give out to cover Charlene's Journey and Battle. We will start with the staff at Monument Health in Rapid City where her original prognosis started - excellent care and direction!

Next, to those who helped me, especially when I was at home during the initial steps in this - the food, the company, the physical help, the emotional support. **THANK YOU!**

Charlene's Journey then took us to Southwest Healthcare in Bowman for what ended up being 6 months. Wow, what great care! Thank you for your patience with us - lots of visitors with lots of ideas sometimes! To the Drs, nurses, aides, snack ladies, cooks, cleaning staff, physical and other therapies, and anyone we may be missing - **THANK YOU** for treating her like she was your own relative!

Big thanks to the visitors, people who sat with Charlene many hours and many days, those of you who brought food, sent her drinks, flowers, pictures, cards, and so much more. **THANK YOU!**

To the kids and staff of the Bowman School, **THANK YOU** for honoring Mrs Honey in so many ways! She loved you all and your support in return was absolutely amazing!

Lastly, Charlene's Journey brings us to her funeral. Will start with Trevor and his staff, such excellent care, professionalism, and the level of service could not have been better! To the Reeder Firemen and everyone else who helped set up chairs and tables, those that served lunch, and to all that helped clean up after this amazing event, those who helped with the presentation of Charlene's life, and to everyone from near and far who attended - **WOW, what a nice crowd!** To Deb and Pastor Mary, just an outstanding service and a perfect send off for an amazing lady. **THANK YOU!!!**

We are truly humbled by all of the cards, the benefit, the physical, emotional, and moral support, and even an honorable story on the local TV channel! Our hearts are extremely heavy as Charlene's Journey is now over, but she is no longer here with us trapped in that body that limited her in so many ways late in her life, our memories of her will live on forever! There are so many!!! **THANK YOU ALL!**

With much love,
 Charlene's Family

Eido Connect
 we're here to help you grow
 your business!
 With 100% coverage!!

STUBER RANCH'S 56th ANNUAL SALE
SATURDAY, APRIL 20, 2024
At the Ranch • 1pm MDT

selling **90 HORNED** and **15 POLLED** YEARLING BULLS
15 HEAD OF FALL BULLS
50 TOP-END REGISTERED HEIFERS
80 HOME RAISED commercial females - 60 HEREFORD 20 BWF

DVAuction
 Broadcasting Real-Time Auctions



Joe Goggins - Auctioneer

CATALOG and updated information online at stuberranch.com • hereford.org • dv.auction • **HEREFORD AMERICA**
 VIDEO on our website - www.stuberranch.com and the livestock link
 UPDATED INFORMATION ON OUR WEBSITE stuberranch.com
 LET US PUT YOU ON OUR MAILING LIST - VISITORS WELCOME ANYTIME
 10 miles north of Bowman or 16 miles south of Amidon on Hwy 85, then 5 miles west, 1/2 mile south
STUBER RANCH 7606 149th Ave SW PO BOX 56 BOWMAN, ND 58623
ROGER - 701-523-5371/523-6813 CELL • SALE BARN - 701-523-3522 • DUANE - 701-523-3496/701-523-1479 CELL • MAC - 701-440-0015
 Contact us at dstuber@ndsupernet.com or visit us at stuberranch.com



BOWMAN-SLOPE SOIL CONSERVATION DISTRICT

2024 Scholarship Opportunity

ESSAY QUESTION:

How does crop rotation and rotational grazing promote soil health?

Two Scholarships will be awarded

1st Place: \$1000

2nd Place: \$500

Please write an essay using a maximum of 1,000 words.

Scholarship Applications are due by April 26, 2024

Eligible Students must be a graduating high school senior or a current college student within the Bowman Slope Soil Conservation District

Please Include a cover sheet with:

- Name
- Address
- Phone Number
- High School Attended
- College Attending

Submit Essay To:

Email: bsscd@ndsupernet.com
 Mail: Bowman-Slope SCD
 PO Box 920
 Bowman, ND 58623
 Phone: (701) 523-8733
 Deliver To: The Bowman-Slope SCD
 Tree Shed (on the East of the Bowman County Fairgrounds)

Please contact the Bowman-Slope SCD with any questions!



Special Announcement:
BABY CHICKS WILL BE HERE APRIL 10TH!!

Taking orders at the ProPoint Farm & Ranch Store now!

(701) 523-3132

We have Chick Supplies & Feed on Hand
 Call Joe, Andi or AG for all your Farm & Ranch needs!

 Follow us on Facebook




20 - 1st Ave. SW **Weston Hafner, D.D.S.**
 Bowman, ND **Caitlin Hafner, D.D.S.**
701-523-5651 <http://www.dakotadentalcenter.com>

Dakota REMODEL

PROFESSIONAL HOME REPAIR

SPECIALIZING IN SMALL PROJECTS

Ask about our hourly rates!

701-484-2375
 DAKOTAREMODEL.COM
 Bowman, ND and surrounding area



Call for a Free Estimate!

- Custom Windows & Doors
- Siding
- Decks
- Roofing
- Seamless Gutters

Seth Springer,
 Licensed Contractor
701.264.0770
seth.springer94@gmail.com
 Bowman, ND



DWB Photo Contest

Join our photography contest with the theme of agriculture and nature and win some prizes from us!

Please use the QR Code to enter!

Submissions will be open from April 1 - 30, 2024.




Member FDIC 

Killdeer Mountain Contracting • Killdeer, ND

COMMERCIAL AUCTION

Thursday, April 25, 2024 – 1:00 p.m. (MT)

AUCTION LOCATION: Killdeer Mountain Contracting: 10317 ND Hwy. #200 • Killdeer, ND

- 10317 ND Hwy. #200 • Killdeer, ND
- 3.87 +/- Total Acres
- 12,990 sq. ft. Main Building
- 768 sq. ft. Cabinetry Shop
- 5,378 sq. ft. Storage Building
- 4,000 sq. ft. Hoop Building
- Online Bidding Available



This sale is managed by Pifer's Auction Company, Kevin Pifer, ND #715. All statements made the day of the auction take precedence over all printed materials. The seller reserves the right to accept or reject any and all bids. Seller to reserve all sub-surface minerals.



www.pifers.com



Andy Mrnak • 701.206.1095
 Jim Sabe • 701.523.6283
 John Soreide • 701.206.0761

3-30-4-13

The most satisfying work in our communities is HELPING OTHERS.

THE AFFORDABLE WANT AD CONNECTION

EMPLOYMENT

Cook - Hospital and Skilled Nursing Full-Time - Prepares high-quality appetizing food for patients, staff, and residents. Follows safe food handling practices and maintains a sanitary work area. Education: High school Graduate or equivalent preferred. On-the-job training **Relocation package - \$1,500 Sign-on bonus for a ten-month commitment - \$1,000** <https://www.wrhs.com> and 701-567-6190

FOR SALE

Farm fresh raw milk for sale. Cows are milked daily. \$10 per gallon. Delivery available. Call Erika at 701-590-0231. tfn

SEED FOR SALE: Registered ND Heron spring wheat, FHB, BLS and rust resistant. Carson Kouba - 1-701-563-7800. 4-6,13,20c

FOR SALE:

Payloader with 3rd valve
For Sale or Rent Vans
Gooseneck Flatbed Trailers
2 New Flatbed with 15,000 axles
48 ft. Wilson Flatbed
2 - Semi End Dumps
1 hyd. hanger door, new Mack A400
Cat Engines - 3406E, 343, 353, 3306, 3208
Self Contained Snow Blower sits on a Payloader
96 4700 IHC Mechanic Truck service box.
6 Standby Generators
Guard Rail \$4.00 per ft.
Sucker Rod 3/4", 7/8", 1"
New 2" Gas Pipe, 40 ft. long
Poly Pipe 20 in. x 50 ft. long, weighs 2700 lbs. per joint, ideal for culverts
3 Cabin Boats
New 30 Gal. Totes - \$10 each
2005 Excursion Class A Motor Home
Call for more information.
Versatile 555 Tractor
New recapped tires government surplus size 385/65x725 - 4 tires for \$1,000.00
18.4 x 38 tractor tires - nice
Loyboy 60 ton Trailer detachable tandem Jeep single stinger
Loyboy 80 ton Jozd Jeep Trailer
Triple trailer, single stinger
Used Steel Posts \$3.00 each
New tire chains fitt 20.5 x 25 and 17.5 x 25 and 14 x 24
New Truck Tire
245x75x16 New Bridgestone 10 ply tires, on 8 hole wheels \$175 each.
1 Bifold Hanger Door
Located 11 miles South of Lemmon on 73
Call 605-374-5444

WANTED

Young couple looking for pasture to rent for 10-25 pair in SW ND. Willing to repair fence. Please call or text Casey 701-300-3528. thru 4-13pd

EMPLOYMENT

HELP WANTED: Looking for someone with experience to put up hay 10 miles east of Lemmon, SD. Paying only by the hour. Will furnish all equipment and all things needed. Please call 605-374-5344 2/17-5/25c

Ward Clerk - Hospital Full-Time Position - Rotating weekday, weekend, and holiday shifts - Responsible for coordinating activities at the Nurses' Station, including receptionist, general clerical, and information management duties with computer skills. Education: High School or equivalent Experience: Secretarial experience and computer knowledge. <https://www.wrhs.com> and 701-567-6190

HAPPENINGS

Bowman Gun Show

Bowman, ND
April 19th - 20th - 21st
Four Seasons Pavilion
Friday: 3pm - 7pm
Saturday: 9am - 6pm
Sunday: 9am - 3pm

• Free Admission •

Contact Rick Stark
406-778-2428
Cell: 406-891-0701

Sponsored by:
Bowman Rifle Club

3/16-4/20c

CONTACT US

Eido Connect:
Located at 17 E. Divide,
Bowman, ND
Phone : 701-523-4577;
Fax: 701-523-4579; Email:
connect@ndsupernet.com

FARM/RANCH

WANTED: Looking to Rent/Buy Land for farming operation for 2024 and beyond. Please call or text Grant Miller 701-426-4734. 7/1-3/30c

Young Farmer looking for farm land to rent in the Hettinger, Regent and Reeder areas. Paying top dollar cash rent. Call 701-928-1804. tfn

EMPLOYMENT

Full or Part Time Mail Carriers WANTED: In the Hettinger Area. Call 701-567-3508. tfn

Housekeeping Hospital and Clinic Full-Time Position - Performs all Housekeeping duties as assigned on a daily basis for the patients, public, residents, and personnel. Education: High School Diploma or equivalent. On-the-job training. **Relocation package - \$1,500 Sign-on bonus for a ten-month commitment - \$1,000** <https://www.wrhs.com> and 701-567-6190

Handyman For Hire! - You need anything done around the house? I mean anything, I'll let you know if I can do the job. Very Reasonable. Call 701-230-1591 and talk to Mike and I live in Mott, ND.

ABLE, INC. RECYCLING
101 North Main Street
Bowman, ND
701-523-5844
ALUMINUM CANS
25¢/LB
HOURS:
Monday - Friday
8 am to 4 pm

BOWMAN GRAIN IS HIRING!

Your responsibilities as a grain operation specialist include, but not limited to, loading and unloading trucks and rail cars, running grain samples, monitoring the condition of stored grain, maintain a clean facility and completing equipment maintenance as needed. Must have a valid driver's license and be able to pass a pre-employment drug/alcohol screening.

Call Bowman Grain today at 701-523-3173 or stop by the elevator:
16 4th St. NE, Bowman, ND

MOVING SALES

MOVING SALE: 307 5th Ave NE Apt. #1, Elgin, ND. April 20th 8am-2pm. Furniture & household items. 4/6-20c

FOR RENT

FOR RENT: Apartment - two bedroom unfurnished, Scranton, ND. Call Dale 701-523-8263 for details. TFNc

FOR SALE

FOR SALE: Maytag washer (top load) & dryer. 6 months old good condition. \$700 for both. Call 218-298-1064 4/6-20c

GIVEAWAY

Mia is approx. 4 yrs old, spaded. Tabitha is about 4 months old. Both personable cats who love attention. Both in good health. **MUST GO TOGETHER/WILL NOT SEPERATE!** For more info call nicole at (701)824-4585

APARTMENT FOR RENT

****VACANCY****

The Carson Manor, in Carson, ND, is a Senior Citizen Independent Living Complex

- ALL apartments are ground level.
- Rental Assistance is available.
- Within one block of the business district and four churches.
- Daily on site meal program

For more information, call 597-3249, or email: albahn@westriv.com
TDD/TYY 1-800-366-6888



ROLLING INTO SPRING

INSTANT REBATES
\$100 off Nokian
\$50 off RoadX

when you purchase a set of 4 Passenger or Light Truck tires, in stock. With installation & premium coverage.

105 N Main
Bowman, ND 58623
701-523-5236



OPEN HOUSE
ALL LOCATIONS
Thursday, April 11th
Come join us for refreshments & door prizes

\$100 Prepaid Mastercard

when you purchase a set of 4 qualifying Toyo Tires

\$50 Off Alignment with qualifying purchase

Pot Hole Special

\$50 OFF Brakes Complete Brakes w/ Rotors & Pads

See store for details. Sale ends April 30th, 2024. Some exclusions apply.

Simmental & Sim-angus

Bulls For Sale

yearling & 2 yr olds

Black & Blaze

low birth weights - calving ease

Call 701-870-0597

thru 6-25

Wanted / Competitive Pay Full & Part Time Positions Available

Scranton Equity Agronomy is looking for qualified help to span our busy spring season. Full and Part Time Positions available. The spring field work season varies from the middle of March and continues through the middle of June. Of particular interest will be candidates who hold a current CDL license. Positions to fill will vary including operating application equipment, tending product to the farms or fields, unloading or loading fertilizer and chemicals, general yard work to facilitate operations and providing service to customers throughout. We also are in need of seasonal office help in Agronomy to assist in the blending process. Due to the seasonal time frame, pay will be competitive and based on the candidate's experience and qualifications.

Scranton Equity

Interested candidates should contact the Central Office at 701-275-8221 or Phil Sulzman at O: 701-275-8124 C: 682-351-9626

CLIP & SEND

EIDO CONNECT

Box 247, Mott, ND 58646

Box 97, Bowman, ND 58623

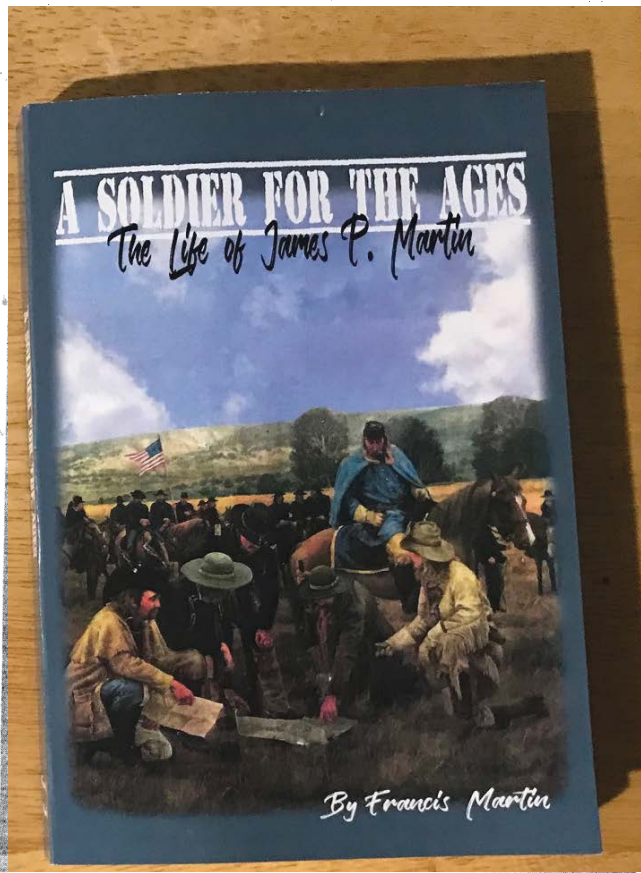
You can clip and send in your want ad to the above address or you can call at (701) 824-2605 or FAX: 824-2927 - Mott (701) 523-4577 or FAX: 523-4579 - Bowman

Please give complete information - 25 words or less \$7.00 per week. 10¢ a word after. Please remit check along with ad. Thank You. Number of weeks to run: _____

Name _____
Address _____
Phone _____

The only true wisdom is in knowing you know nothing.

Remember - this day will never come again - cherish every moment



SOLDIER FOR THE AGES
By Francis Martin

Continued from last week

Another woman in uniform, no stripes, was sitting on a chair behind a counter that looked like it might have come out of a bar. She smiled at him, and he handed her the permission card. "If you need any help, don't ask me. I'm pinch hitting for some guy that had to go back to his unit."

"I'm looking for someone and I know he's a reader so I thought he might be here."

"Well, when they come in here and borrow a book, they sign the register. What is his name?"

"James Martin."

"No James Martin today," she said after going down the list. "For you, I'll look at yesterday's list."

day's list."

"James is a history buff and if he came in here, he would be taking books out of that category."

"The 'tomes', that's what we call those kinds of books, cannot be taken out, but here, day before yesterday, a James Martin was here."

"Does it say which barracks he is in?"

"One-hundred. That would be about half a mile southeast of here."

"Why don't they give you a private door?" he asked as he turned away.

"They'd probably have to get a Congressional order. By that time the war would be over, and

they wouldn't need it." Then she laughed.

CHAPTER THIRTY

The whole base was suddenly in a mass of activity. They were building helicopter pads all across the landing field. Each pad was then painted with a large - sized number on it. Dan'l had gone to barracks one-hundred and come away with nothing. Even if James had been there, the current residents were all new and he didn't have enough spare time to look.

It was the end of November when the 7th Airborne Cavalry was ordered to get ready for a major offence. Major Moore had found the area quite by chance. Several high-flying planes had flown over the area and taken pictures of the terrain. Not a single person had been seen since the time they had seen that one man that Moore had marked as a lookout. The enemy stronghold was underground and there wasn't so much as a path that gave away their exact position.

The battle plan was to have two landing zones: Landing Zone X-ray and five miles away, landing zone, Falcon. The plan was to force the enemy out of their bunkers. They would then surround the enemy and push it into a pincher movement and get them into a crossfire action.

James had been drafted as squad leader. Thanks to the base medics who were already educated in poisonous local bugs, he had recovered quickly from the bug bite. This time every recruit was in tall, lace-up boots with their pant legs inside. This squad was responsible for securing the area around LZ X-ray. They landed on the first wave with Lt. Col. Hal Moore and the 2nd battalion secured the next area, LZ Albany. It looked so peaceful. There were six helicopters carrying 120 men. The helicopters circled and began to land when both battalions came under massive fire.

The U.S. troops at LZ X-ray landed in a clearing near the dense brush adjacent to the Chu Pong Mountains. For hours the troops had been shuttled into that area. The clearing was a wide, dry creek bed. In Africa they would have called it a Wadi. This was the worst place they could have landed. The footing was round rocks. There was nothing to hide behind. Once you were in the wadi, you were exposed to fire from anywhere. The company patrols were quickly sent out to secure

the LZ. The North Vietnamese were even better hidden than what they had expected. They were underground and well organized. The element of surprise had been lost while the U.S. was building up attack strength. This was just the first day, and the NVA responded with superior force and opened a full-frontal attack on the 1st Battalion. The first man down was the radio man. Another man stopped to help him but there was no way to help him. He pulled the radio off his shoulders and ran with it only to take a bullet in the back. The overwhelming response by the NVA was a slaughter. Multiple companies, including those of the 7th Cavalry were surrounded and cut off in the right near the LZA. A few companies of the 7th formed a defensive perimeter around the command post, but they were outnumbered 100 to 1.

James moved his squad into position against the NVA attack, but they were coming from everywhere. He was remembering the things his dad and grandfather had told him but none of them fit the position he and his squad was now in. As he moved them forward, they were shelled by AK .47 fire. As he was shouting orders, another group of helicopters began to land. Before the skids ever hit the ground, the men were jumping out and getting cut down.

That was when James thought he saw Dan'l. He was jumping from the moving chopper with the rest of his unit.

James grabbed his M16 just when an enemy round hit the stock of his rifle and blew off the heel of his boot. The thought that raced through his mind at that time was what Gen. Custer endured at the end of the Battle of the Little Big Horn. Life and death for everyone in his unit were now on the line. The men of the 7th kept returning fire but the frontal attack by the North Vietnamese kept coming. As casualties mounted, it became clear that their plan was in

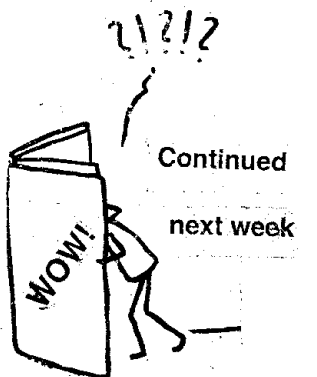
shambles. He remembered the speech that Moore had given just before they were shipped out in which he said they would all come home, dead or alive.

The intensity of the fire fight was fever-pitched and continued into the evening. They couldn't fight as a unit. It became a case of every man to himself. The more he thought about it the more he imagined that he'd seen Dan'l jump out of that chopper, but since then, nothing. Maybe it had just been an illusion. He wanted to see Dan'l, so bad, he imagined that's who he saw. Six more helicopters dropped water, medical supplies, badly needed reinforcements and water. They picked up bodies when they had the opportunity, but they risked their own lives in doing so. One chopper, that was loaded with the injured got off the ground and then crashed when it was shot down by a thousand bullets. It landed nose down. The rotor kept turning and then it just rolled over and died. No one got out. James said to Moore, "We need to go get them."

Moore just shook his head, "That's what they want. As soon as we try to make a rescue, we'll be dead meat. When we don't make an effort, they will fire a

Napalm bomb and burn it up."

He and a dozen other men were crouched down behind a termite mound that was over five feet tall. Their faces were blackened with both dirt and soot from the firearms. On the other side of the termite mound there was a row of bodies that had been dragged and carried off the field. Moore had gone down the row and looked at every face. This was not the Battle of the Little Big Horns. Some of the dead did not have faces anymore. James crab-walked with Moore and looked at the faces. Was Dan'l among the dead? Many bodies still lay across the wide dry creek. He could be there.



Continued next week

Registered Yearling Angus Bulls For Sale



AI Sires:

Sitz Bullseye, Square B True North 8052, and Mill Bar Hickok

- Good Dispositions • Will Feed
- Will Deliver

Echo Valley Angus

"Registered Herd Since 1978"

Stephanie Jensen

Scranton, ND • 605-278-6160

YOUNG GUN CONSTRUCTION
- Office -
605-576-3301
- Hunter Kalisiak -
701-523-1289
- Cody Holmes -
605-200-0532
LUDLOW, SOUTH DAKOTA
FOR ALL YOUR BUILDING AND DIRT MOVING NEEDS

Mobridge Livestock

Thursday, April 11, 2024-Weigh-ups at 9am Followed by Bred Cows & Heifers & Pairs at Noon. Mettler-40 Bwf Heifer Pairs. All Calves AI Sired from SAV Early Arrival. Inforce 7 at Birth. Big February Calves have No Brands. Full Shot & Mineral Program. Cows have been poured.

mobridgelivestock.com

Contacts:
Jason Anderberg: (605) 848-0038
Tigh Anderberg: (605) 845-4877
Casey Perman: (605) 848-3338
Cole Mettler: (605) 519-1683
John Hoven: (605) 848-3507
moblvstk@westriv.com - Mobridge Livestock Market
PO Box 190 -- Mobridge, SD 57601

Wayne's Blade Service & Guests
ABSOLUTE AUCTION

April 20, 2024
10:00 am (CT)
1109 8th St N-New Salem, ND (New Salem Fair Grounds)

CONSTRUCTION EQUIPMENT / TRACTORS
644E JD wheel loader
772B-H JD motor grader-under 100 hrs on new motor, 14' blade, extra new blades
180 Masey Ferguson-Perkins Diesel, 3 pt, 540, 2 hyd, shows 5800 hrs-Parade Ready! SHARP!
'04 Challenger MT555B-3 hyd, 3 pt, 540/1000, 8k hrs w/ML78 loader & grapple-new-T. Sauer
SEMIS / TRAILERS / TRUCK
'00 Mack-10 spd, sleeper, 427 eng, 913,642 mi
'90 Load King belly dump
'97 Freightliner-10 spd, 12.7 Detroit, 530K-R.Doll
'01 Freightliner-tandem-10 spd, 12.7 Detroit, Omaha 20' steel, Pro-Lok tarp, semi plate to put back to semi-R.Doll
'98 Northern 34' ag hopper-Shur-lock roll tarp, elect traps-R.Doll, Winco 12w generator on trailer-R.Doll
'90 Wilson 46' st/alum combo 48' hay rack-R.Schmidt
CAMPER / VEHICLES / MOTORCYCL
'20 CedarCreek Hathaway Ed 36CK2-3 slide.SHARP!
'16 Chevy Silverado HD High Country-crew, 4X4, 6.6l Duramax, Allison trans, 30,117 mi-SHARP!
'16 GMC 3500HD,crew,4x4,6.2L,55K,alum serv box-SHARP!
'11 Buick Lucerne CXL-4 dr, auto, sunroof-NICE!
'05 Chevy 2500 duramax ds! 94K, leather-NICE!
'86 Chevy K20-4x4, manual, shows 90k
'80 Chevy C10-2x4, diesel
'09 Harley Davidson Ultra Classic-SHARP!
tote of Harley parts & misc

YARD / GARDEN / CAMPING
Toro 50" Zero Turn mower-23 hp Kawasaki
Traeger grill, Snapper leaf blower, Ryobi gas trimmer, garden hose reel, alum folding ramps
9) post solar lights-NIB, coolers, garden items
2) weed burners, 25# propane tanks
girls bike, water skis, Ripper water tube
Skil chain saw in case, lots of camping supplies
SHOP / MISC
4)Toyo P235/75R15/105S NEW w/Chev rallyrims
Rock Tamer mud flaps, airflow tail gate
tow hitch, locker, tire iron, tow straps, creepers
camper stabilizer, Porta Power, bench grinder
Spectra Precision LL 300 N laser level
vintage David White transit, ratchet straps
receiver hitch, bench vise, log chains
Craftsman 8" drill press 1/3 hp, bench vise,
Craftsman tool chest, creepers, tow straps
Delta miter saw, Milwaukee circ saw, sockets
DeWalt chop saw, port air tank, hi-lift & hyd jacks
DeWalt 18v-sawzall, nut driver, impact, grinder
Lincoln port acetylene torch, elect supply toolbox
tie down straps, allan wrenches, wrenches
Chain binders, misc shop items-some NIB
GUNS / ICE FISHING
Winchester M1200 12 ga 2 3/4" pump
Remington M700 .243 bolt w/scope
Remington M7400 30-06 SPRIG semi w/Tasco
Coast to Coast CC880 20 ga pump
Remington M870 12 ga Magnum pump
Remington M760 30-06 SPRIG pump w/Tasco
Remington M870 Express Magnum 20 ga pump
Whisper Fusion Mach I .177-NIB
Clam Fish Trap portable ice shelter

TERMS: Cash/Bankable Check *Lunch Served *More Items too numerous
*Not Responsible for accidents *Statements on day of sale take precedence over printed material *Sold as is, where is with no guarantees or warranties implied whatsoever

Online bidding on major items at www.gandgauctioneers.com

G and G Auctioneers
CLERK: Glass Auction Service, LLC

Ross Glass 701-290-4001
Chance Glass 701-870-0137
Chad Stoltz 701-290-0546

www.midwestauctions.com/gandg
www.globalauctionguide.com
www.ndauctioneers.com
www.auctionzip.com

~ School News ~

Elgin/New Leipzig Public School

Sunday, April 7
 Open Swimming 1-3
 Adult Water Aerobics 3:30 - 4:30
Monday, April 8
 Elig Due @ 8:20
 4-5-6 Elementary VB @ New Salem/Almont @ 4:00
 JH Track @ Bowman County Invite @ Bowman @ 2:00

Tuesday, April 9
 Open Swimming 6-8
 4-5-6 Elementary VB vs Mott/Regent & Flasher @ 4:00
 HS Track @ Bowman County Booster @ 2:00 or HS Track @ Hazen Bison Stampede @ 1:00
 Preschool Roundup @ Elgin @ 6-7

Wednesday, April 10
 Adult Water Aerobics 3:30 - 4:30 & 5:30 - 6:30
 School Board Mtg @ 7:00
 Sport Pictures for Elementary VB @ 2:00 & Track & Golf @ Carson @ 3:45

Thursday, April 11
 Open Swimming 6-8
 Grandparents and Parents Day @ 11-3

Friday, April 12
 HS Track @ Washburn TBA
 Quiz Bowl @ Lemmon

New England Public School

Tuesday, April 16th
 11:45 a.m. dismissal for HS Track traveling to Bowman
 - dismissal for 456 VB traveling to Fairfield for match vs. Belfield - South Heart at 4:00

Wednesday, April 17th
 Religion Release begins at 2:10 p.m.
 o St. Mary's: K-10
 o Our Redeemer's: K-8

Thursday, April 18th
 4:00 p.m. 456 VB vs. South Heart - Rich/Taylor in the new gym

Saturday, April 20th
 7:30 p.m. Doors open
 8:00 p.m. Grand March
 Prom
 11:50 p.m. Door Lock for After Prom at Memorial Hall

Mott/Regent Public School

Monday, April 8
 Myra Klein, Artist in Residence, Grades 7-12
 NDSA Testing Starts
 Finance Committee Meeting, 7:00 AM
 JH Track @ Bowman County, 2:00

Tuesday, April 9
 Myra Klein, Artist in Residence, Grades K-6
 HS Track Bison Stampede Meet @ Hazen, 1:00
 Or
 HS Track @ Bowman County Booster Meet, 2:00
 Elem VB @ Grant County, 4:00

Wednesday, April 10
 Grade 9 Service Hours at the Food Pantry Changing Program, 5th & 6th Grades, 8:30
 School Board Meeting @ Regent, 7:00 PM

Thursday, April 11
 Elem VB vs Hettinger/Scranton, 4:00

Friday, April 12
 Quiz Bowl @ Lemmon

Saturday, April 13
 Prom, 7:00 PM



Rehearsal with some of cast.

Children's Theatre of JACK AND THE BEANSTALK

(LEMMON, SD) What happens when a young boy plants wonder beans in his own backyard? For Jack, it is the beginning of a great adventure. Audience members are invited to come along April 5th and 6th when the Missoula Children's Theatre (MCT) and local youth present JACK AND THE BEANSTALK.

The local cast features Lyberti "Otty" Foltz as Jack, Anna Larson as Mother, Haylin Fike as Milky White and Rosemary Wiechmann as the legendary Giant. Adding a unique twist to the story will be an unusual mix of characters including Savannah Peterson, Malachi Schock, Hannah Wiechmann, Rosalie Wiechmann, and Sierra Newman as the Farmers. Reva Barnes, Allie Wagendorf, Kiya Nehl, Labela Smolinski, and Gunnar Newman as the Merchants and Olivia Suter-Maier, Arabella Kling, Lila Barnes, Tess Gebhart, Alina Smolinski, Sloane Penfield, Harlow Fike,

Macy Bartell, Kloe Card, Georgia Donohue, and Ashley Gebhart as the Circus Performers. Landen Paulson, Ember Kane, Rowan Anderson, Jayla Bartell, Brooklyn Card, Owen Straight, Julius Lillich, Seth Lewton, Ray Lynn Dauwen, Ava Larson, Thea Lewton, and Ahmyah Wipf will appear as the Wonder Beans. Prairie Newman, Bane Jones, and Everlee Lewton have served as the Assistant Directors throughout the week.

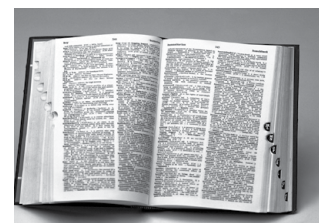
JACK AND THE BEANSTALK will be presented at April 5th at 6:00pm and April 6th at 1:00pm at the Beeler Community Center. Production entrance fee is a donation to the Grand River Arts Council. Proceeds go towards fund Missoula Children's Theatre in the Lemmon Community.

The Missoula Children's Theatre residency in Lemmon is brought to you by the Grand River Arts Council with support from Lemmon Sports Boosters, High School Student Council, Elementary Student Council, Current Connection, CHS Southwest Grain, and Dakota Plains Federal Credit Union.

Grand River Arts Council is a 501(c)(3) nonprofit that exists to promote arts and culture in the communities surrounding the Grand River in Northwest South Dakota and Southwest North Dakota.

Missoula Children's Theatre is a non-profit organization based in Missoula, Montana. This coming year more than 65,000 cast members across the globe will take to the stage to the delight and applause of their families, friends, community, neighbors and teachers!

For more information, call Raven Christman (Lemmon Library) #605-374-5611



I came across the word expostulate in a novel written in nineteenth century English. Leave it to an Englishman to use such a word. I didn't look it up even though I have a dictionary that was printed in 1953. I wanted to see how the locals understood it.

The prefix ex from Old French in the simplest words I can conjure is without, such as ex-wife.

So I asked one of my college-educated-farmers what expostulate meant, to him, that is and this is what he said: "It sounds like something you would do in the bathroom."

Actually, if you are expostulating, you are trying to reason with a person in earnest. When you postulate, you are demanding something of another. It has nothing to do with material things. It is a claim not yet proven. It may have pro's and con's. Lawyers postulate all the time. So if you are ex-postulating, you are trying to disprove what another is trying to prove.

The wheat farmer says his crop was destroyed by a billion grasshoppers. The claims adjuster says the farmer cannot count that far so he is ex-postulating. Therefore his claim is invalid.

Before the chemical invention of DDT, the best defense against grasshoppers was a flock of ducks. The ducks ate so many grasshoppers that they could barely hold their heads up. They digested them and turned them into fertilizer. Therefore, my neighbor was right about something you would do in the bathroom. The grasshoppers were expostulating.



Area School Calendar April 1st - April 6th

Bowman County

1 No School Noon JH Track @ Home	2 2pm Track @ Home	3	4 Regional Vocal Comp. @ Trinity	5	6 Noon Track @ Home
--	-----------------------	---	-------------------------------------	---	------------------------

Scranton

1 No School Noon JH Track @ Bowman	2 2pm Track @ Bowman	3	4 Regional Vocal Comp. @ Trinity State Science Fair @ Gr. Forks	5 State Science Fair @ Gr. Forks	6 Noon Track @ Bowman 7pm Hettinger Prom
--	-------------------------	---	---	-------------------------------------	--

Harding County

1 No School	2 2pm Track @ Bowman	3	4	5 9am Track @ Spearfish	6 9am JH Track @ Spearfish 8pm Prom
----------------	-------------------------	---	---	----------------------------	---

Baker, MT

1 No School	2 TBA Tennis @ Glendive 2pm Track @ Bowman	3	4	5	6 9am JH Track @ Sidney Noon Track @ Bowman
----------------	--	---	---	---	---

State Science Fair @ Missoula
 State FFA



HELP WANTED

- Elementary Secretary
 > Deadline to apply is 4pm, April 22, 2024
- Superintendent
- Elementary Teacher
- 7-12 Math Teacher

Benefits include medical, dental, retirement, and paid vacation leave.

- Activities Director
- PT Cook - Rhame Campus
- Head Volleyball Coach
- Activity Bus Driver

Bowman County School District #1
 102 8th Ave SW • PO Box H
 Bowman, ND 58623

For more information contact
 Superintendent: 701.523.3283
<http://bowman.k12.us/>

Subs Needed Teacher & Para New England Public School

Contact
 Tamara Volk
 701-579-4160

One kind word can change someones day.

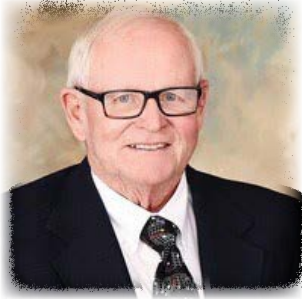
South Dakota; two sisters-in-law, Mandy (Brandon) DeWitt of Wentworth, South Dakota and Tonya (Tim) Atyeo of Sturgis; nine nieces and nephews, Jaden and Jaylene Silha, Hendrik and Jarrett Tvedt, Chase, Lance and Myles DeWitt, Austin and Ella Atyeo and numerous aunts, uncles and cousins.

Remembrances and condolences may be shared with the family at: www.krebsbachfuneralservice.com.

Lynn R. Brackel to be Held

Lynn R. Brackel, 80, of Bowman, ND, passed away on Sunday, March 24, 2024 at the St. Alexis Medical Center in Bismarck, ND.

Funeral Services for Lynn will be on Saturday, April 6,



2024 at 2:00 pm at the Bowman Lutheran Church. Pastor Renee Johnson will officiate with burial to follow in the Bowman Cemetery. Visitation for Lynn will be on April 5, 2024 from 12-5 at the Krebsbach and Kulseth Funeral Home Chapel with a Family and Friends Service beginning at 7pm at the church.

Funeral Services for Lynn will be live-streamed.

Lynn Roy Brackel passed away surrounded by his family on March 24, 2024, at St. Alexis hospital in Bismarck, ND.

Lynn was born on September 14, 1943, to Henry and Amelia (née Gimbel) Brackel in Mott, ND. He enjoyed growing up with his four brothers on the family farm and being a Mott Cardinal. He graduated high school in 1961 and earned a music degree from Dickinson State College in 1965. He subsequently taught Music and German at the Underwood school system, and it is here that he met Judith "Judy" Ann Jemtrud while she was a manager at Jack's Hair-stylists in Underwood. They wed on August 15, 1969, at the Valle Lutheran Church in Rolette, ND. Shortly thereafter they moved to Bowman, ND, to begin their lifetime commitment to each other and their family.

Loyal servant, humble leader, cherished friend, father, and husband – these are some of Lynn's many great attributes. He was a man that knew where he stood in the world and generously gave of himself every day of his life. He was fiercely proud of his North Dakota roots, his family, and his community, extolling their virtues to everyone he encountered. Lynn's lifelong journey of volunteering and

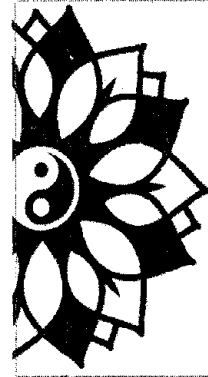
leadership roles within the church, township and county began in late 1969 when he arrived at Bowman as a music teacher. For over 30 years he served as the community band and the church choir director, sharing and inspiring his passion for music that began in his youth as a member of the Brackel Trio and Rockin' Bob & the BeeBops. He and Judy ran the Brackel Plumbing business for over 30 years, serving as an employer to many school-aged youths and young adults. This also allowed Lynn the opportunity to lead the Bowman County Chamber of Commerce and Rotary Club as president and board member of each, as well as serving a County Fair board member and Economic Development Cooperation member. Upon selling and retiring the plumbing business in 2009, Lynn was elected for the first of his 14 years as a county commissioner, chairperson, and zoning board member. In these roles he was a diligent steward of the community resources and staunch advocate for Bowman County. Never content to remain idle, Lynn had many other projects and adventures throughout his life. He showcased his collection of vintage tractors and engines as an active member of Yesterday's Farmers, eagerly awaiting the annual parades and events. For the last several years Lynn, along with his companion Marie Snavelly, combined their love of bicycling and travel to create many wonderful memories. They also championed by the Bowman Regional Library Greenspace fundraising efforts. This is a fitting culmination and tribute for Lynn's lifetime of civic duty, a man that gave his all to family, friends, and community.

Lynn and Judy are now reunited in heaven after 50 years of marriage. He was also preceded in death by his brothers Robert and Theodore, and his parents. He is survived by his children, Bill and Lynna' Speier, Glen and Dr. Lorelle Davies, and Bradley and Judy "Bunny" Brackel; siblings Darrell of Bismarck, ND, and Leo of Mott, ND. His cherished grandchildren Caralissa, Caitlyn, Siteris, Kyleigh and Taylor will miss their grandfather dearly.

Funeral Services for Lynn will be on Saturday, April 6, 2024, at 2:00 p.m. at the Bowman Lutheran Church. Pastor Renee Johnson will officiate with burial to follow in the Bowman Cemetery. Visitation for Lynn will be on Friday, April 5, 2024, from 12-9 pm at the Krebsbach and Kulseth Funeral Home Chapel. All are welcome to attend and celebrate Lynn's life. The family ask that in lieu of flowers, please send donations to Bowman Regional Library Greenspace Project, C/O Sarah Snavelly, PO Box 179, Bowman, ND 58623. Condolences can be sent to 8562 144th Ave SW, Bowman, ND 58623. The family would like to thank friends, family and the community for your outpouring of care and support.

Krebsbach and Kulseth Funeral Services of Bowman in charge of the arrangements.

Be sure to read the obituaries - they are stories that inspire - although passed on they leave a legacy of inspiration. May we follow their examples.



LMTND.massagetherapy.com

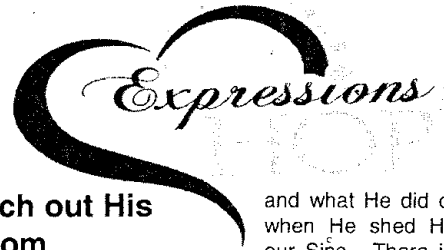
Legendary Massage Therapy

701-449-6499

102 North Main Street, Suite 1

Bowman, ND 58623

LMT#21165



Search out His wisdom

It is hard to believe that this Sunday will be our 2nd month holding Church services at Western Plains Baptist Church. From our first service, till this Sunday, we have seen growth with new folks being with us for the first time. That is always encouraging and keeps the future bright for our Church.

The thing is though, while it is always positive when we see Church growth of any kind, seeing folks make a life changing decision for Jesus, that is truly exciting. I think that Matthew 6:33 says it best, seek ye first the Kingdom of God and His righteousness and all these things shall be added unto you. It is hard for us, as His people to get it and understand it sometimes.

That we as His people, are to search out His wisdom, His guidance and His direction for our lives. It is truly about Him

and what He did on the Cross when He shed His Blood for our Sins. There is nothing as people that we can do to attain His Salvation, except through accepting Him as our Lord and Savior and asking Him into our hearts, to forgive us our sins and become Lord of our life.

Jesus tells us in John 14:6 He is the truth the way and the life and the only way to the Father is through Him the Son Jesus Christ.

I am Pastor Julian Burgess of Western Plains Baptist Church in Bowman ND 13 1st Ave and E Divide. We would like to invite each and every person of Bowman County to our Church services every Sunday morning at 10:00 AM. Where we Preach from God's Word and share what He has to say to us as His Church. If I can be of help to anyone in Bowman County or our Church please reach out to us. Contact Pastor Julian at 605-461-6727.



Jonathan "Jon" Daniel Brosz Rites Held

Jonathan "Jon" Daniel Brosz, age 43 of Bowman, North Dakota passed away on Palm Sunday, March 24, 2024 at the



Southwest Healthcare Center in Bowman. Visitation was held from 6:00 PM until 7:00 PM with a Family and Friends service that began at 7:00 PM on Wednesday, March 27, 2024 at the Bowman Lutheran Church. Funeral Services were held at 10:00 AM on Thursday, March 28, 2024 at the Bowman Lutheran Church Pastor Renee Johnson officiated. Interment was in the Bowman Cemetery. Krebsbach & Kulseth Funeral Services of Bowman has been entrusted with the arrangements.

Jon was born on July 11, 1980 in Moberidge, South Dakota to Dan and Jolene (Plooster) Brosz. The family moved to Bowman in 1981, where Jon was raised and educated. He was very active in high school, he was a member of the speech team, played football (Right Guard and Defensive Tackle), played basketball (Leading Rebounder) and was a member of the track team (Shot Put and Discus) and during the summers he stayed busy working on the Brooks Ranch. Jon graduated from Bowman High School with the class of 1998. Following high school he attended North Dakota State University (NDSU) in Fargo, North Dakota for one year of fun before he transferred to

South Dakota School of Mines and Technology in Rapid City, South Dakota where he majored in Civil Engineering and earned his Bachelors degree in December of 2003. During college he worked summers for his father at Brosz Engineering and after his college graduation he started working full time with his father starting in January of 2004 and continued with Brosz Engineering until his passing.

During college, Jon met the love of his life, Kelsey Hurlburt and they were united in marriage on July 30, 2005 in Bowman and to this union three children were born, Kyle, Ashlynn and Megan. They have made their home in Bowman ever since.

Jon was an eighteen-year veteran with the Bowman Volunteer Fire Department, this is something that he took great pride in. He was a member of the Bowman Lutheran Church and served on the Church Council. Jon loved fishing and hunting, especially deer hunting and he has tagged several trophy whitetail bucks that he enjoyed bragging about. He was a lifelong Miami Dolphins fan and absolutely loved his time as an assistant football coach with the Bowman County Bulldogs. Above everything he truly loved his wife and kids and holidays with family, even with his sisters that he liked to harass.

He was preceded in death by his paternal grandparents, Curtis and Phyllis Brosz; his maternal grandfather, Arlo Plooster; one aunt, Donna Brosz and two uncles, Tom Plooster and Ron Vanden Berge.

Jon is survived by his wife, Kelsey Brosz; his three children, Kyle, Ashlynn and Megan Brosz; his parents, Dan and Jolene Brosz all of Bowman; two sisters, Angie (Tyler) Silha of Glendive, Montana and Jessica (Ryan) Tvedt of Rapid City; maternal grandmother, Arlene Plooster of Corsica, South Dakota; father and mother-in-law, Mick and Connie Hurlburt of Sturgis,

Evanson Jensen Funeral Home

•Lemmon, SD •Faith, SD •Hettinger, ND •Mott, ND •Elgin, ND
 605-374-3805 605-967-2805 701-567-2522 701-824-2693 701-584-2644

Serving the West River Country with dignity and caring since 1912

www.evansonjensenfuneralhome.com
 Greg Jensen

WIDDYS PLUMBING, LLC

NATHAN WIDDICOMBE
 OWNER/MASTER PLUMBER
 701-209-0608
WIDDYSPUMBING@GMAIL.COM
 Regent, ND 58650

AREA COMMUNITY EVENTS CALENDAR

First Monday of Every Month • Bowman, ND
 Bowman Lions monthly meeting and dinner at 6:30 p.m. at Bowman Lodge and Convention Center

Second Monday of Every Month • Scranton, ND
 Scranton Lions monthly meeting at 6:30 p.m. at the Community Center.

Second Monday of Every Month • Scranton, ND
 City Board Meeting at 7:00 p.m. at City Hall

Second Tuesday of Every Month • Bowman, ND
 Southwest Cancer Survivors support group for anyone touched by cancer. 4:40pm • Pleasant Manor meeting room • 206 10th Ave NW. Questions call: 701-279-6603, 701-523-4657, 701-440-8344, or 701-440-8788.

First Thursday of Every Month • Bowman, ND
NOTICE TO ALL VETERANS: Post 48 Local American Legion invites and encourages you to join our meetings. Back of the Crystal Bar at 7pm. For more info call Paul White, Adjutant, 701-574-3198.

First Tuesday of Every Month • Amidon, ND
 City Council Meeting at 8:30 a.m.

Every Wednesday • Scranton, ND
 Scranton TOPS meet at 9:00 a.m. in the Community Center.

Third Wednesday of Every Month • Bowman, ND
The Bowman/Slope Community Cupboard is open from 3pm-5pm. No referrals necessary.

Last Monday of Every Month • Check "Be the Light" on Facebook for the monthly location
 Be the Light Suicide Support Group • 6:30pm. Everyone Welcome.

If you have a nonprofit, community event you would like published, free of charge, on the Area Monthly Community Events Calendar, Send them to: Eido Connect, PO Box 97, Bowman, ND 58623 by 4:00 p.m. Wednesday.

No smile is as beautiful as the one that struggles through tears.

Toll Free Reservations:
1-800-284-1855

Trapper's Inn
Box 398
Belfield, ND 58622
(701) 575-4261



The Trapper's Kettle Restaurant
Belfield - 575-8585

Stockert Tree Solutions, LLC
Excavating - Tree Row Removal
Rural Building Take Down
Stump Grinding Service
Call for your needs!
Owner/Operator
David Stockert
605-490-2181

Menu

Mott Elder Care Menu
for the Week of April 9 - 12
For meal reservations
call by noon the day before.
Call Elder Care Office
701-456-1818

All menus are subject to change based on the availability of food.

April 9 - Tater Tot Casserole, Southwest Corn, Pears, 1 Whole Grain Bread, Milk

April 11 - BBQ Chicken, Baked Patoe, Broccoli, Fresh Watermelon, Dinner Roll, Milk

April 12 - Pasta w/Meat Sauce, House Salad w/dressing, Zucchini, Fresh Mandarin Oranges, Breadstick, Milk

Bring Your Excess Perennials to the 47th Annual WRHS Perennial Plant Sale for Scholarships!

By Ted Uecker, WRHS Foundation
No, it's not as wet here as it was a year ago (yet), but the ground is soft enough for you to consider weeding out a few of your overgrown excess perennials -- and then possibly planting a few new varieties. Our West River Health Services Foundation happens to have just the answer for you:

- 1) Around May 13-15th or so, thin out your perennials; put 'em in a pot.
 - 2) Bring 'em to West River Ambulance Garage in Hettinger prior to noon on Friday, 5/17.
 - 3) Come back to the Garage at 2pm that same day to purchase new-to-you, unique perennials and give a goodwill donation toward our Auxiliary Legacy Scholarship. A gardener's paradise!
- That's right, on Friday, May 17th, from 2-4 pm, the "47th Annual WRHS Foundation Perennial Plant Sale" will be held at the West River Ambulance Garage (located at 307 Adams Avenue, Highway 12, across

the street from the Kum N Go). You might want to be there right at 2:00 pm sharp, as last year most all of the perennials were gone by 3:15! For a goodwill donation, you can purchase perennial plants, and the good feeling that 100% of your gift is going toward a local area student pursuing a healthcare degree, via our "Auxiliary Legacy Scholarship." And remember, you can deliver your overgrown perennials to the Ambulance Garage before the sale (Thursday night or Friday morning prior to the sale at 2pm) -- to pay them forward! Not only will you be allowing someone else to re-

plant them, but also the WRHS Foundation will receive goodwill donations for the perennials, which will then be paid forward for local student's academic scholarships.

The West River Health Services Auxiliary, which began seventy-four years ago in 1950 with the new Community Memorial Hospital in Hettinger, started with a group of local volunteers, who helped raise funds for needed healthcare amenities. Eventually the WRHS Auxiliary raised more funds for improvements to the hospital/clinics, plus scholarships for local area students. One of their annual fundraisers, for 47 years now, was the Annual "Perennial Plant Sale."

Since the WRHS Auxiliary disbanded five years ago, it was hoped that the WRHS Foundation would take on the Auxiliary's "Perennial Plant Sale." With the help of longtime volunteers and employees, and former Auxiliary Member leaders, Barb West and Jennifer Seamands, we held our 46th Perennial Plant Sale last year, raising \$2,741 for our Auxiliary Legacy Academic Scholarship Fund. A local area student (Marin Gonzalez from Mott-Regent School), who is pursuing a Social Work degree at UND, was the beneficiary of the perennial sale fundraiser.

Therefore, we need local gardeners to consider thinning out their perennial flower beds

and gifting them to our WRHS Perennial Plant Sale. Barb West (701-567-2736) and Jennifer Seamands (701-567-4650) are available via telephone if you have any questions about the sale. Just bring your excess perennials Thursday evening or Friday morning to the West River Ambulance Garage. Then return at 2pm on Friday, May 17th, to select whatever you'd like to add to your flower bed. Plus, bring your checkbook or a little cash that you'd like to offer for a freewill donation (some years, we've received small trees, annuals and vegetables. Strawberry plants, rhubarb and

raspberry plants are top sellers). Thank you for considering thinning down your perennials in your garden and making a donation to our 47th Annual WRHS Foundation Perennial Plant Sale on May 17th. Plus, thank you for attending and possibly making a goodwill donation toward our Auxiliary Legacy Scholarship. We always need more sensational care givers here. Onward!



YOUR COMPLETE SEED HEADQUARTERS

Bowman Grain will be offering the following seed for sale this spring planting season.

- Certified Heartland Seed Wheat
- Legget Seed Oats
- Lavina Haybet Seed Barley - Limited Amount
- Millets and Sorghum Seed
- Field Pea Inoculants
- All kinds of Cover Crop Seed Available
- LEGEND Seed Corn and Sunflowers
- Many Varieties of Grass and Alfalfa Seed


• Call Bowman Grain today to book your spring planting needs •

701-523-3173
1-800-738-3173

BOWMAN GRAIN

Schock Real Estate
124 Main Ave. S. - P.O. Box 239 - New Leipzig, ND 58562
www.schockrealestatend.com

Martin F. Schock, Broker - 701-584-3053 (H)
Colleen Vetter, Sales - Elgin - 701-584-2535 (H)



CALL FOR BIDS
REAL ESTATE IN FALLON COUNTY, MONTANA

To: The James D. Kirschten Residual Trust wishes to sell its agricultural real estate in Fallon County, Montana, described as:

Township 6 North, Range 60 East, M.P.M. Section 2: NW1/4 Section 3: All	Township 7 North, Range 60 East, M.P.M. Section 19: E1/2E1/2NE1/4, SE1/4, less COS #93412 Section 20: E1/2, SW1/4, less COS #93063 Section 29: All
Township 7 North, Range 60 East, M.P.M. Section 17: A tract in the SW1/4 south of Highway 12 Section 18: S1/2, less 132 acres	Township 8 North, Range 61 East, M.P.M. Section 35: All

Containing, in all, **2,949.678** acres, more or less. Subject to easements, reservations, and exceptions apparent or of record. Including the transfer of associated BLM leases. **This description may be revised based upon the final seller's title policy.**

The Seller will require a **cash** sale. Bids will be accepted for individual parcels, but bids will be deemed winning in whatever combination results in the highest total purchase price. The property may be viewed, at the bidder's sole risk, with the permission of the trustees.

The Seller will provide a good and sufficient title insurance policy showing clear title, subject only to the usual and customary exceptions, in an amount equal to the purchase price.

The Seller will pay all property taxes accruing on the property in 2023 and all prior years. The Buyer will be responsible for all property taxes for 2024 and successive years.

The land and all improvements will be sold in its present, as-is condition, without warranty except for title. All water rights will transfer. **All mineral rights owned by the Seller will be reserved.**

An optional bid sheet may be obtained upon request from Batterman Law Offices, P.C., at (406) 778-3006. Sealed bids will be accepted on the above property in tracts or in a single parcel until **5:00 p.m. on Friday, April 19, 2024**, at Batterman Law Offices, P.C., 12 East Montana Avenue, P.O. Box 985, Baker, Montana 59313. All bids must be clearly marked "Kirschten Trust Property Bid." Bidders will be advised if their bid has been accepted by **April 26, 2024**. The Seller reserves the right to refuse any bid for any reason, in its sole discretion. At the discretion of the property owner, following the opening of the bids a live auction may be held among the bidders at a date and time to be scheduled.

The winning bidder or bidders shall place 10% down at the time of the acceptance of the bid and shall sign a buy-sell agreement for the property within 10 days of bid acceptance. The properties will be conveyed by warranty deed, to be held in escrow pending full payment. All closing costs will be split equally between the parties.

The information provided herein is from the owner and from public information sources. Interested bidders should their own due diligence regarding the properties.

Pifer's AUCTION & REALTY
LEARN MORE AT PIFERS.COM

 \$635,000 105 7th St. NW - Hettinger, ND	 \$480,000 403 8th St. NE - Bowman, ND
 \$219,780 113 11th Ave NW - Bowman, ND	 \$210,000 108 2nd St. SW - Bowman, ND
 \$182,000 604 Divide St. W - Bowman, ND	 \$186,000 403 Main St. - Reeder, ND
 \$87,500 408 Hamilton St. SW - Scranton, ND	 \$182,500 1006 Sunset Place - Bowman, ND
 \$182,000 48-Unit Trailer Court - Bowman, ND	 \$139,500 207 7th Ave. NW - Bowman, ND
 \$250,000 48-Unit Trailer Court - Bowman, ND	 \$127,900 507 2nd St. NW - Bowman, ND
 \$420,200 19.1 Acres - Bowman County, ND	 \$127,000 206 6th Ave. NW - Bowman, ND
 CALL FOR PRICE Residential Lots - Bowman, ND	 \$627,000 Country Inn - Bison, SD
 \$110,000 513 Main St. - Hebron, ND	 \$334,800 808 Main St. N - Scranton, ND


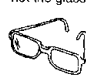
Andy Mrnak
701.206.1095
andy@pifers.com

Ali Pierce
701.206.1046
ali@pifers.com

709 12th St. NE • Bowman, ND | www.pifers.com | Contact: 701.523.7366 |

Forgive your enemies - it messes with their heads

The highest reward for man's toil is not what he gets for it but what he becomes by it.

not the glasses  Congratulations to our \$5 Winners  not the glasses

Diana Hanson, New England, ND - (Mott Winner)
Kay Baier, Buffalo, SD - (Bowman Winner)

Eyeglasses were on Page 3 Playhouse Theatre Ad

(hours for calling)
Monday thru Wednesday (9:00 am - 4:00 pm)

Be sure check the ads in this weeks

Eido Connect for the lost eye glasses - and win \$5.00
Call (701) 824-2605 - Mott or (701) 523-4577 - Bowman

not as much, maybe because of family situations, but maybe they shouldn't. After all, it is by being with others that we learn to be social, how to speak and act in a group and generally how we make friends with those that are not in our immediate circle. Broadening our horizons is never a bad thing, and seeing how others interact is how we learn what is right and proper. Once we leave school, we most likely need to make other friends that share our interests and what better way than to participate in areas that we like to find others that like those same things.

RECIPE OF THE DAY

TACO SOUP

1 lb. hamburger
 1/2 c. diced onion
 Fry together hamburger mixture

Add to soup pan:
 2 cans undrained stewed tomatoes
 2 cans chili beans
 1 pkg. taco seasoning
 2 (8 oz.) cans tomato sauce
 3 c. water (3 cans)
 1 can undrained corn

Cook on stove. Serve with chips, shredded cheese and sour cream.

Thoughts for the Week

by June Schmidt

We all get stuck in a rut from time to time. Life on a daily basis can be very predictable, as we do the same thing, whether it's going to work or just staying around the house. However, that may not be what is the best for us if we do not expand our lives a bit now and then.

It really doesn't matter how you break the normal routine, but sometimes you just have to do things that are a bit different than you usually do, as otherwise your life can get a bit boring. It's not so much a problem when you are young, but as we get older and life starts to slow down in the years following children leaving the house, sometimes we forget that change is necessary. Doing the same thing every day can be counter-productive and can lead to depression if there is no relief.

We are a curious people in general, from the time we are young, we want to know how to do things, what is going on around us and what people are thinking. In prior years, especially in a farming community, people rarely got off the farm as daily chores kept them working from sun up to sun down. But they did have their Sundays for church and if they could manage it, once there were children old enough to help with chores, they got away to auctions, county fairs, church socials and the odd barn dance. There they met with other people, relatives and

friends who were off the farm for the same reason that they were - a bit of social interaction and a break from daily chores. It was a time to find out what was going on, how other people were getting along, and yes the local gossip. Later when people started to move off the farm to let the younger people take over, they still attended all the social events and spent time with their friends and relatives at coffee during the day and still attending all the auctions just to see what was selling and for how much. It was a break in the routine that was needed to keep our minds and bodies entertained.

Even in the winter months, there were things that we would do as a family to keep us entertained. At times it was reading, possibly from the Good Book, but there were daily newspapers and monthly magazines, and for the kids if they got bored with reading their books, there was the Sears or Montgomery Wards catalogs to look at, especially the christmas book where you could look at all the toys and make your choices as to what you were going to drop hints about, or maybe write Santa Claus to ask for. We also spent times putting together puzzles and playing games and even card games with our parents or even with the adults if we were good enough and they were short a player. Some of those games could go for hours and quite often the kids went to bed with the adults still playing.

Nowadays, with the advent of all the electronics, it is pos-

sible that we are forgetting the reasons for going out of the house. We depend upon those devices to inform us, to entertain us and to connect with others. But the problem with them is that we are losing the face to face connections that we used to have. Sure we can be stimulated by social media, sometimes for the worse, but is it good to just be alone with a tablet? Where are the social gatherings that there used to be? And when they are happening, how many people come out to them? The older people sometimes do, but younger ones

So what I am trying to say here is that once in a while, just take a chance at life. Plan an outing or a trip, look at the events in the area where you live and decide to attend, just get off the internet and what it shows you. Find people to have face to face conversations with and put your phone in your pocket for a while. You may be surprised what is out there and who is trying to do the same thing. Mostly just find a new way to enjoy your life, make you smile and maybe a laugh or two. Your attitude, your brain and even your body may thank you for it. God Bless you All.

Crane & Merriman, PC

ATTORNEYS AT LAW

DAVID M. CRANE
 Licensed in ND & SD

PAT J. MERRIMAN
 Licensed in ND, MO & US Supreme Court

219 Brown Ave., Mott, ND
 (701) 824-2591

Gregory J. Johnson
 DDS, FAGD
 Doctor of Integrative Medicine
 Health Centered Dentistry
 And Orthodontics
"Dedicated to excellence in dentistry"

1-701-974-2118
 1-800-439-7439
 www.richardtdental.com

200 3rd Ave West
 Richardton, ND 58652

Montana Fiberglass Stock Tanks
 Many 10' x 2' Round Tanks - 1190 gal. capacity on hand.
 Also insulated - Oblong energy free fiberglass tanks for winte use

Tanks are available now
Call 701-597-3923

GREFF ELECTRIC
 The Power of Family

Adam Greff
 Owner
 Master Lic #3594
 9175 65th St. SW
 Mott, ND 58646
 701-260-1403
 greffelectric@gmail.com

Residential, Commercial, Farm/Ranch, Trenching, Locating, Fault Locating



April Showers

S N Y V Y W E T A L O C O H C Z Q
 E J A T H D E F G N I N N I G E B
 K C D T H N N O T E K S A B M Q B
 O U S W A R M E R W E A T H E R Y
 J O L N T C X W C M W S I X I J E
 U Z O F E J A O H H R U Q T E H L
 Q S O Y Y E L R I N N N J L O G J
 X R F M D A R G C N G J L T Q P S
 B E L M Y I D G K J X Y Q C N L P
 U W I C F A K H S O B S D P X A R
 N O R C R U F V T E R W S X W N I
 N H P O X W U L A R O V E G S T N
 Y S A O H X N N O L A N I S K I G
 E A S T E R S L P W L E R K Z N K
 S E L D D U P N K H E B A L N G T
 U U M O O L B X R S U R U A T F X
 C A O B A S E B A L L O S M N E V

- | | | | |
|------------------|-----------|------------|----------------|
| April Fool's Day | Aries | Baseball | Basket |
| Beginning | Bloom | Bunny | Chicks |
| Chocolate | Earth Day | Easter | Flowers |
| Green | Grow | Jellybeans | Jokes |
| Planting | Plow | Puddles | Showers |
| Spring | Sun | Taurus | Warmer Weather |

Bowman-Slope SCD

Interested in Planting Trees in 2025?



If you are interested in planting trees in 2025, come stop in at the office and talk to us about a tree plan!

COST-SHARE AVAILABLE

- 75% cost-share through the Outdoor Heritage Fund
- Applications for cost-share taken until July 26th.

Contact Information

PO Box 920
Bowman, ND 58623

Work Phone: (701) 523-8733
Cell Phone: (701) 410-1028



Bowman-Slope SCD

WE ARE HIRING

Seasonal Tree Help

High School/ College Students
Fabric Installation

Job Starts after Memorial Weekend
Job ends around July 1st

Contact Sierra Lee:

Cell: 701-440-1028
Or stop in at the Tree Shed to sign up in person



SCOTT STEINER

cell: 605.641.9429
steinerflooring@hotmail.com

Bowman/Scranton Area

Carpet Cleaning
Fire & Water Damage
Restoration Specialist



Lunch and Learn virtual series

Attend one or all to learn more about Alzheimer's disease.



Join us at the Mott Health Care Center to watch the following programs.

Mott Health Care Center
401 Millionaire Ave
Mott, ND 58646

You do not have to register on-line just come!
Let's learn together about Alzheimer's and other dementias.

10 Warning Signs

Learn how to recognize common signs of the disease, how to approach someone about memory concerns, the importance of early detection and benefits of a diagnosis, possible tests and assessments, and Alzheimer's Association resources.

Thursday, March 28 11:00 am - 12:00 MT

Presenter: Acacia Stuckle, Family and Community Wellness, NDSU Extension/Emmons County

Register at

<https://bit.ly/3SDF9ZM>

Dementia Conversations : Driving, Doctor Visits, Legal and Financial Planning

Often, conversations with family about changing behaviors can be challenging and uncomfortable. Get tips for breaking the ice with your family so you can address some of the most common issues that are difficult to discuss: going to the doctor for a diagnosis or medical treatment, deciding when to stop driving, and making legal and financial plans for future care.

Monday, April 8 11:00 am - 12:00 MT

Presenter: Erin Berentson, MPH, RDN, LRD
Family and Community Wellness, NDSU Extension/Bottineau County

Register at

<https://bit.ly/4bm6QZq>

Healthy Living for Your Brain and Body: Tips from the Latest Research

Get insights into how to make lifestyle choices that may help you keep your brain and body healthy as you age. Learn about research in the areas of diet and nutrition, exercise, cognitive activity and social engagement, and use hands-on tools to help you incorporate these recommendations into a plan for healthy aging.

Monday, April 22 11:00 am - 12:00 MT

Presenter: Rita Ussatis, MS, Family and Community Wellness, NDSU Extension/Cass County

Register at

<https://bit.ly/3uhx2nr>

Individuals with disabilities are invited to request reasonable accommodations to participate in NDSU-sponsored programs and events. To request an accommodation(s), please contact NDSU Extension/Cass County at 701.241.5700, two weeks prior to the event to make arrangements.



This project is supported by funding through the North Dakota Department of Health & Human Services, Aging Services Section.

24/7 Helpline 800.272.3900

alz.org/mnnd

Prairie Dental, Inc.

Dr. Jennifer Sarsland
Dr. Kevin Mark

12 6th Ave SW
Bowman, ND 58623
701-523-3255



www.prairedentalinc.com



petersonscarpetcleaning@gmail.com

(701) 483-6985

Contact Us Today!

Residential & Commercial Carpet Cleaning -
Area Rug Cleaning - Upholstery Cleaning -
Pet Stain & Odor Removal & Many More!

Eido Connect

we're here to help you
grow your business!

With 100% coverage!!

BOWMAN SALES & SERVICE



- 3 Day Money Back Guarantee
- 5 Day Full Exchange Policy
- Huge Selection of Vehicles
- Hassle Free Financing



Home Phone Numbers:
 Wayne Bergquist 701-523-6502
 Josh Lindstrom 701-523-6503
 Mark Wald - 701-440-8789

1-800-472-2218 • 701-523-3257

Bowman, ND • www.bowmansales.net



2024 Ford Edge Titanium
\$47,945



2024 Ford Expedition XLT MAX
\$78,070



2024 Ford Expedition XLT
\$72,335



2024 Bronco Wildtrak
\$63,325



2024 Ford Edge Titanium
\$46,755



2023 Ford Explorer XLT
\$50,475



2023 Ford Explorer
\$52,965



2023 Ford Bronco Black Diamond
\$50,900



2023 Ford Bronco Big Bend
\$49,655



2023 Ford Bronco Black Diamond
\$49,900



2023 Ford Mustang Mach-E GT
\$51,990



2023 Ford Mustang Mach-E GT
\$52,190



2023 Ford Mustang Mach-E GT
\$51,695



2023 Ford Mustang Mach-E Premium
\$49,935



2023 Ford Bronco Sport Badlands
\$36,655



2023 Ford Bronco
\$56,900



2021 Ford Bronco Sport
\$30,900



2021 Ford Edge
\$27,900



2022 Ford Bronco Sport Badlands
\$39,900



2021 Ford Bronco Sport Outer Banks
\$35,900



2021 Ford Expedition Platinum
\$67,900



2014 Ford Expedition EL
\$17,900



2017 Ford Expedition EL Limited
\$29,900



2017 Ford Expedition EL Platinum
\$35,900



2020 Ford Expedition Platinum
\$67,900



2019 Ford Escape SE
\$27,900



2019 Ford Expedition MAX XLT
\$53,900



2017 Ford Expedition
\$29,900



2018 Jeep Wrangler Unlimited
\$24,900



2019 Ford Expedition MAX Limited
\$36,900



2018 Nissan Rogue SV
\$19,900



2019 Toyota RAV4 Adventure
\$33,900



2021 Ford Explorer Limited
\$33,900



2015 GMC Yukon XL 1500 SLT
\$27,900



2022 Lincoln Navigator L Standard
\$77,900



2016 GMC Yukon XL SLT
\$29,900



2020 GMC Yukon SLT
\$53,900



2017 Lincoln Navigator L Select
\$32,900



2019 Dodge Durango GT
\$32,900



2020 Chevrolet Suburban Premier
\$64,000

FILTER SALES EVENT

Save up to 40% on all NAPA Gold Filters

April 1st - 13th

Restrictions and limitations may apply. Contact store or see store associate for details.
2024 National Automotive Parts Association LLC



Bowman Auto Parts

612 S Main
Bowman, ND
701-523-5285