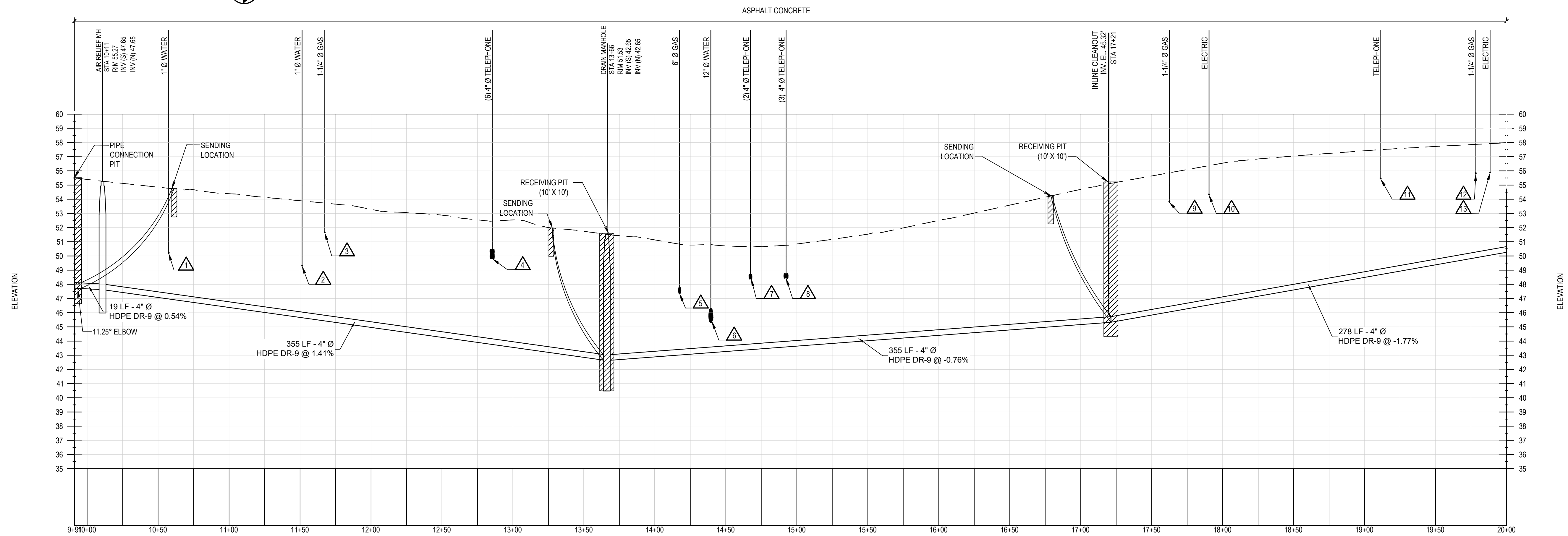


Plan (Sta 09+91 - 20+00)

SCALE: 1" = 40'-0"



PROFILE 9+91 to 20+00
VERTICAL SCALE: 1" = 4'
HORIZONTAL SCALE: 1" = 40'

UTILITY CROSSING TABLE												
CROSSING NUMBER	STATION #	PROPOSED FORCE MAIN		EXISTING TELEPHONE		EXISTING ELECTRIC		EXISTING GAS		EXISTING WATER		CLEAR DISTANCE
		TOP OF CONDUIT	BOTTOM OF CONDUIT	TOP OF CONDUIT	BOTTOM OF CONDUIT	TOP OF CONDUIT	TOP OF CONDUIT	TOP OF CONDUIT	BOTTOM OF CONDUIT	TOP OF CONDUIT	BOTTOM OF CONDUIT	
1	10+57	47.37	-	-	-	-	-	-	-	-	50.17	2.80
2	11+52	46.05	-	-	-	-	-	-	-	-	49.26	3.21
3	11+68	45.82	-	-	-	-	-	-	51.61	-	-	5.79
4	12+86	44.17	-	-	49.80	-	-	-	-	-	-	5.83
5	14+18	43.41	-	-	-	-	-	-	47.33	-	-	3.92
6	14+40	43.58	-	-	-	-	-	-	-	-	45.30	1.72
7	14+68	43.80	-	-	48.36	-	-	-	-	-	-	4.56
8	14+92	43.98	-	-	48.43	-	-	-	-	-	-	4.45
9	17+63	46.45	-	-	-	-	-	-	53.78	-	-	7.33
10	17+91	46.95	-	-	-	-	54.29	-	-	-	-	7.34
11	19+11	49.09	-	-	55.42	-	-	-	-	-	-	6.33
12	19+78	50.29	-	-	-	-	-	-	55.79	-	-	5.50
13	19+89	50.45	-	-	-	-	55.84	-	-	-	-	5.39

CLEANOUT SCHEDULE	
STATION #	TYPE
17+21	INLINE

REVISED: 09-28-17 NYSDOT COMMENTS
 REVISED: 07-28-17 PER SCDHS COMMENTS
 REVISED: 07-18-17 PER TOWN OF ISLIP & SCDPW COMMENTS
 REVISED: 04-19-17 PER TOWN OF ISLIP, SCDHS & SCDPW COMMENTS
 REVISED: 12-16-16 PER TOWN OF ISLIP COMMENTS
 REVISED: 12-02-16 100% DD DRAWINGS
 REVISED: 10-28-16 SCDHS SUBMISSION

H 2 M architects + engineers
 538 Broad Hollow Road
 4th Floor East
 Melville, NY 11747
 P:(631)756-8000
 F:(631)694-4122

Melville, NY 11747
 Albany, NY 12205
 White Plains, NY 11601
 New City, NY 10956
 Parsippany, NJ 07054
 Howell, NJ 11601

COUNTY OF SUFFOLK
 D.P.W. - DIVISION OF SANITATION

APPROVED
 APPROVED AS NOTED
 DISAPPROVED

THESE PLANS AND SPECIFICATIONS HAVE BEEN REVIEWED FOR THE ABILITY OF THE SYSTEM TO CONFORM TO SUFFOLK COUNTY WASTE WATER TREATMENT REQUIREMENTS. APPROVAL OF THESE DOCUMENTS SHALL IN NO WAY RELIEVE THE DESIGN ENGINEER OF RESPONSIBILITY FOR THE ADEQUACY OF THE COMPLETE DESIGN. THIS APPROVAL EXPIRES TWO YEARS FROM THE DATE BELOW.

BY _____ DATE _____

S.C.D.P.W. APPROVAL

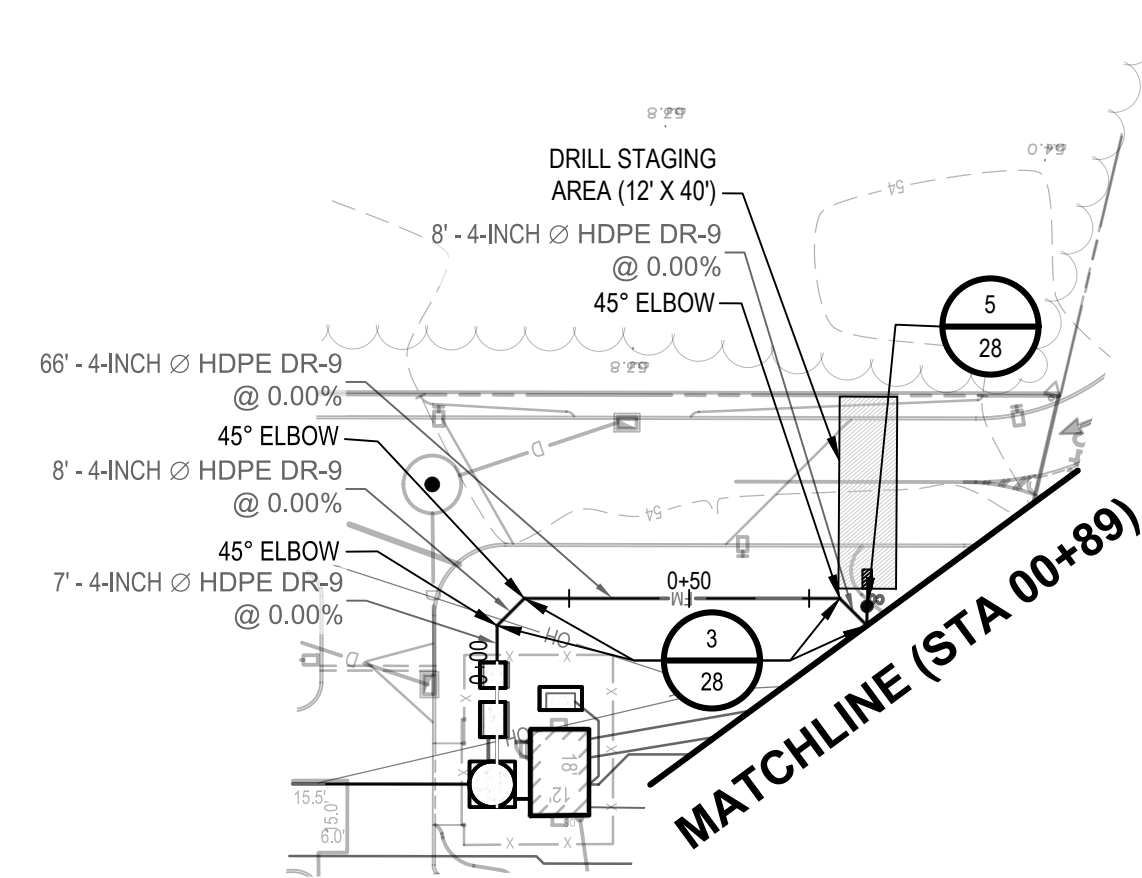
DESIGNED BY: NFB/SKH
 DRAWN BY: SKH
 CHECKED BY: []
 PROJECT NO: SHEL-1501
 DATE: 07/18/2017
 SCALE: []

BRIGHTVIEW AT SAYVILLE
 S/E/C BROADWAY AVENUE & SUNRISE HIGHWAY
 S.C.T.M. DISTRICT 500, SEC 238, BLOCK 2, LOT(S) 3, 2 & 4
 TOWN OF ISLIP, HAMLET OF SAYVILLE SUFFOLK COUNTY, NY
 TOWN OF ISLIP SITE PLAN NUMBER # SP2016-057
 SCDHS REFERENCE NO.: C05-16-0055 / SCDPW REFERENCE NO.: IS 1604
 NYSDOT PERM 32 CASE NO.: 51014 / NYSDOT PERM 33 CASE NO.: 51009

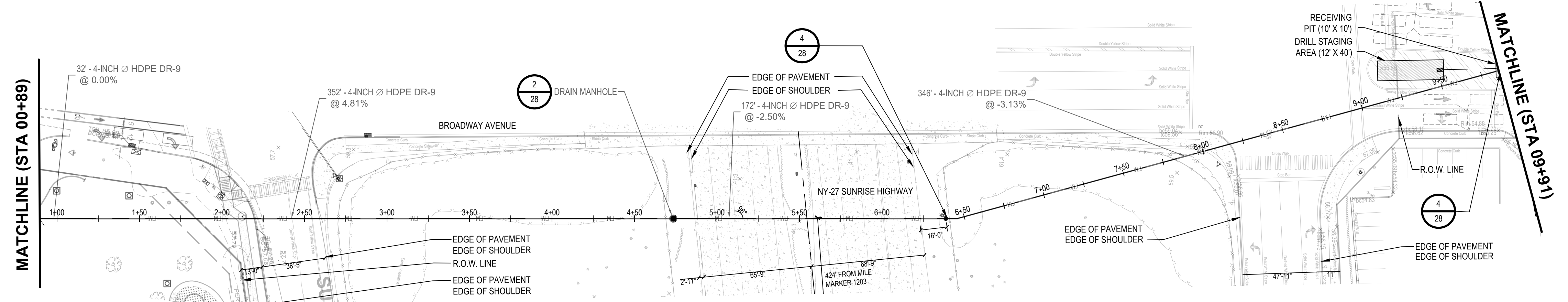
SANITARY FORCE MAIN
 STA 09+91 - STA 20+00

SHEET 22 OF 54

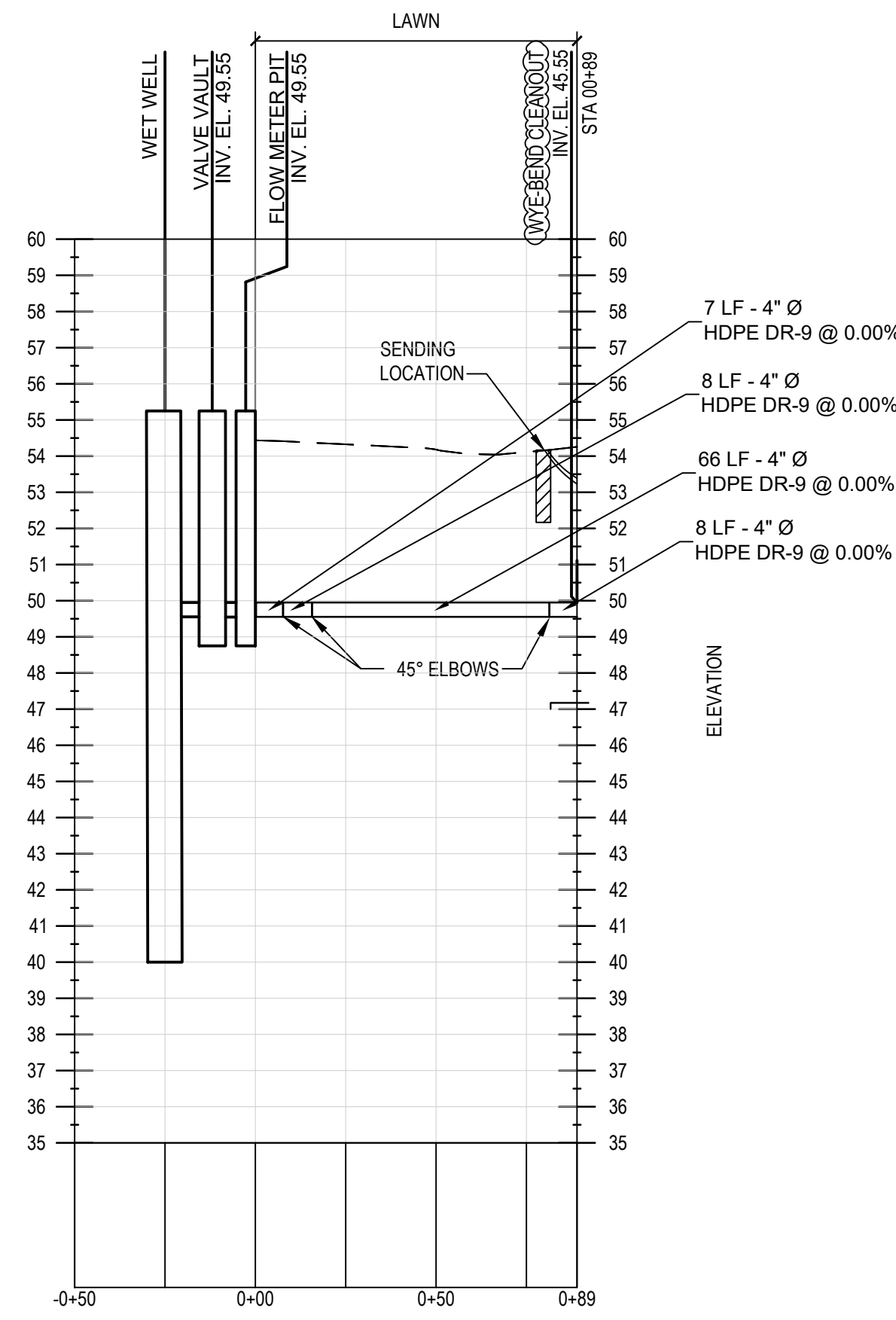
ALTERATION OF THIS DOCUMENT, EXCEPT BY A LICENSED PROFESSIONAL ENGINEER IN ACCORDANCE WITH SECTION 7209 OF NY STATE EDUCATION LAW, IS ILLEGAL.



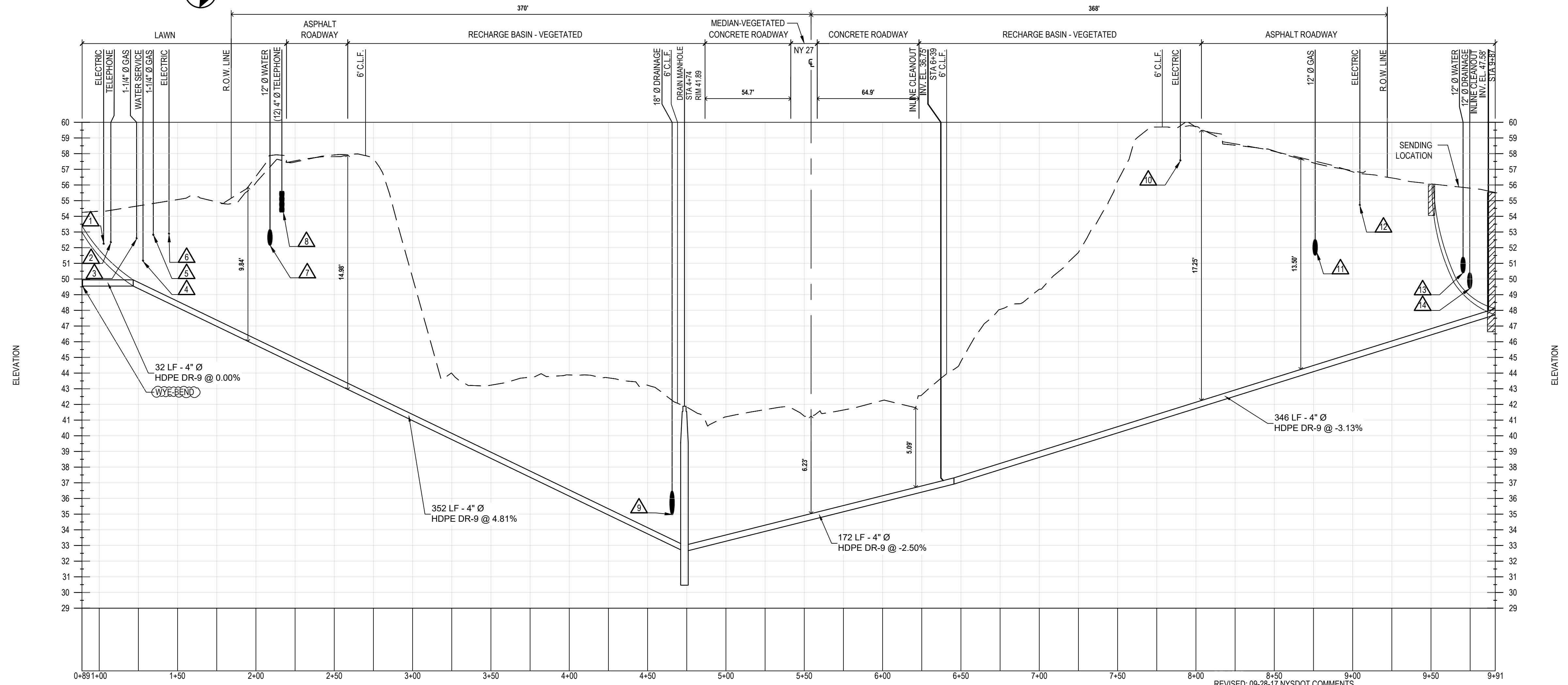
Plan (Sta 00+00 - 00+89)
SCALE: 1" = 40'-0"



Plan (Sta 00+89 - 09+91)
SCALE: 1" = 40'-0"



PROFILE 0+50 to 0+89
VERTICAL SCALE: 1" = 4'
HORIZONTAL SCALE: 1" = 40'



PROFILE 0+89 to 9+91
VERTICAL SCALE: 1" = 4'
HORIZONTAL SCALE: 1" = 40'

- NYSDOT R.O.W. WORK AREA NOTES:**
- PROVIDE SEDIMENTATION AND EROSION CONTROL MEASURES IN ACCORDANCE WITH NYSDOT REQUIREMENTS FOR WORK AREAS LOCATED WITHIN NYSDOT R.O.W. LIMITS.
 - PROVIDE SURFACE RESTORATION IN ACCORDANCE WITH NYSDOT STANDARD DESIGN CRITERIA AND IN ACCORDANCE WITH THE NYSDOT ROAD WORK PERMIT.
 - WILL NEED TO RESTORE FENCE.

UTILITY CROSSING TABLE												
CROSSING NUMBER	STATION #	PROPOSED FORCE MAIN		EXISTING TELEPHONE		EXISTING ELECTRIC		EXISTING GAS		EXISTING WATER		CLEAR DISTANCE
		TOP OF CONDUIT	BOTTOM OF CONDUIT	TOP OF CONDUIT	BOTTOM OF CONDUIT	TOP OF CONDUIT	BOTTOM OF CONDUIT	TOP OF CONDUIT	BOTTOM OF CONDUIT	TOP OF CONDUIT	BOTTOM OF CONDUIT	
1	1+03	49.95	-	-	-	52.22	-	-	-	-	-	2.27
2	1+07	49.95	-	-	52.32	-	-	-	-	-	-	2.37
3	1+24	49.85	-	-	-	-	-	52.57	-	-	-	2.72
4	1+28	49.65	-	-	-	-	-	-	51.13	-	-	1.48
5	1+35	49.20	-	-	-	-	-	52.78	-	-	-	3.58
6	1+45	47.49	-	-	-	52.86	-	-	-	-	-	5.37
7	2+07	43.88	-	-	-	-	-	-	51.43	-	-	7.55
8	2+17	43.48	-	-	54.27	-	-	-	-	-	-	10.79
9	4+66	33.37	-	-	-	-	-	-	-	-	34.98	1.61
10	7+90	41.83	-	-	-	57.53	-	-	-	-	-	15.70
11	8+76	44.55	-	-	-	-	-	51.52	-	-	-	6.97
12	9+05	45.42	-	-	-	54.69	-	-	-	-	-	9.27
13	9+71	47.49	-	-	-	-	-	-	50.40	-	-	2.91
14	9+75	47.61	-	-	-	-	-	-	-	-	49.40	1.79

CLEANOUT SCHEDULE	
STATION #	TYPE
00+89	WYE
6+39	INLINE
9+87	INLINE

COUNTY OF SUFFOLK
D.P.W. - DIVISION OF SANITATION

APPROVED
 APPROVED AS NOTED
 DISAPPROVED

THESE PLANS AND SPECIFICATIONS HAVE BEEN REVIEWED FOR THE ABILITY OF THE SYSTEM TO CONFORM TO SUFFOLK COUNTY WASTE WATER TREATMENT REQUIREMENTS. APPROVAL OF THESE DOCUMENTS SHALL IN NO WAY RELIEVE THE DESIGN ENGINEER OF RESPONSIBILITY FOR THE ADEQUACY OF THE COMPLETE DESIGN. THIS APPROVAL EXPIRES TWO YEARS FROM THE DATE BELOW.

BY _____ DATE _____

S.C.D.P.W. APPROVAL

H 2 M architects + engineers

538 Broad Hollow Road
4th Floor East
Melville, NY 11747
P: (631) 766-8000
F: (631) 694-4122

Melville, NY 11747
Albany, NY 12205
White Plains, NY 11601
New City, NY 10956
Parsippany, NJ 07054
Howell, NJ 11601

DESIGNED BY: NFB/SKH
DRAWN BY: SKH
CHECKED BY: G

PROJECT NO.: SHEL-1501
DATE: 07/18/2017
SCALE:

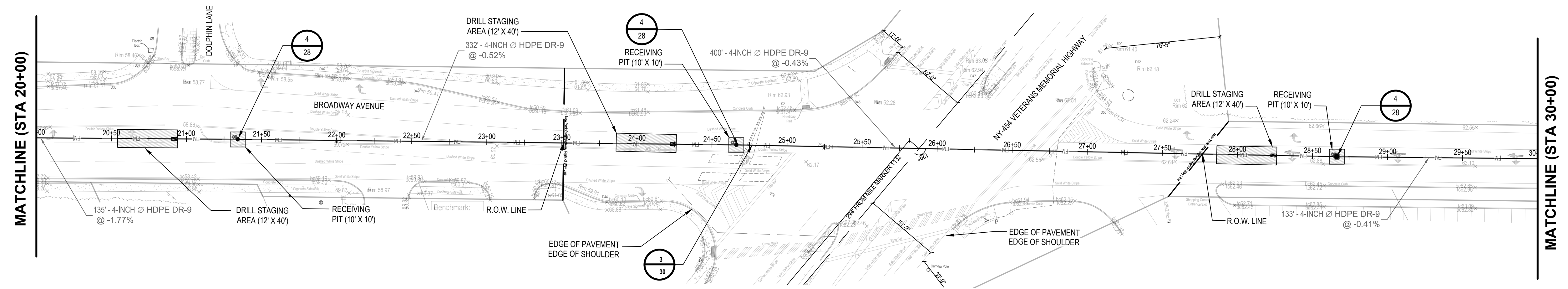
BRIGHTVIEW AT SAYVILLE

S/E/C BROADWAY AVENUE & SUNRISE HIGHWAY
SCTM: DISTRICT 500, SEC 238, BLOCK 2, LOT(S): 3.2 & 4
TOWN OF ISLIP, HAMLET OF SAYVILLE SUFFOLK COUNTY, NY
TOWN OF ISLIP SITE PLAN NUMBER # SP2016-057
SODHS REFERENCE NO.: C05-16-0055 / SCDPW REFERENCE NO.: IS 1694
NYSDOT PERM 32 CASE NO.: 51014 / NYSDOT PERM 33 CASE NO.: 51009

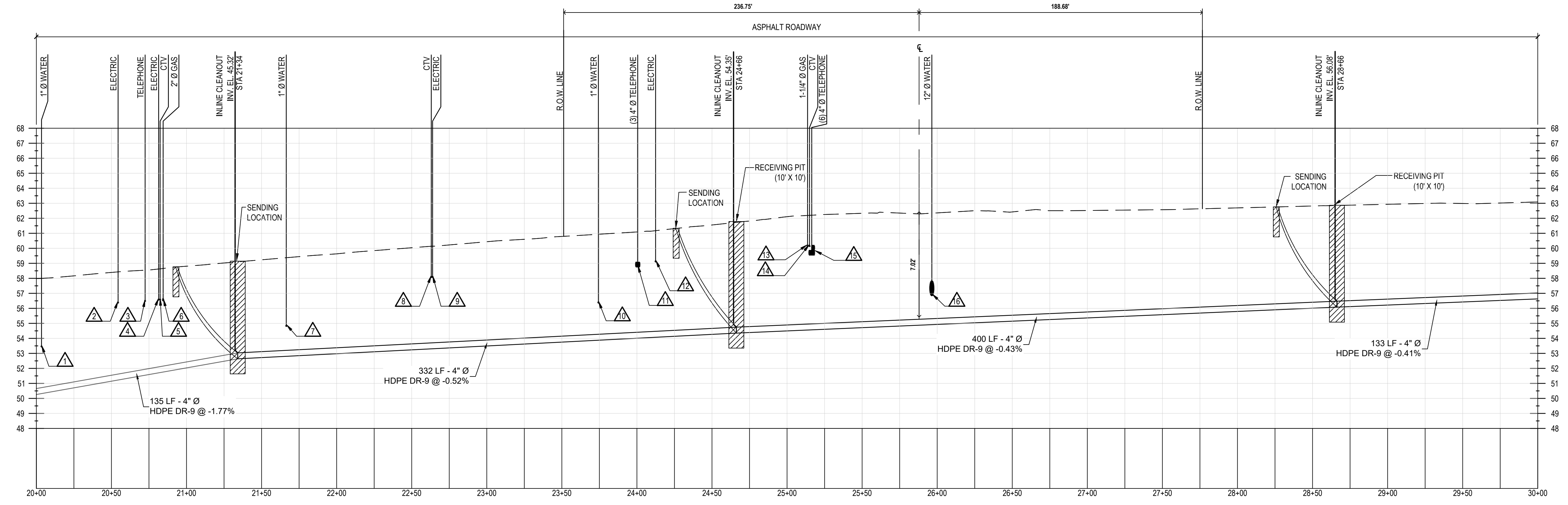
SANITARY FORCE MAIN
STA 00+00 - STA 09+91

SHEET
21
OF
54

I:\projects\1501 - Brightview at Sayville\Consolidated SANITARY FORCE MAIN PLANS SHEETS.dwg Last Modified: Oct 11, 2017 - 11:35am Plotted on: Oct 12, 2017 - 4:07pm By: ashahary



Plan (Sta 20+00 - 30+00)
SCALE: 1" = 40'-0"



PROFILE 20+00 to 30+00
VERTICAL SCALE: 1" = 4'
HORIZONTAL SCALE: 1" = 40'

- NYS DOT R.O.W. WORK AREA NOTES:**
- PROVIDE SEDIMENTATION AND EROSION CONTROL MEASURES IN ACCORDANCE WITH NYS DOT REQUIREMENTS FOR WORK AREAS LOCATED WITHIN NYS DOT R.O.W. LIMITS.
 - PROVIDE SURFACE RESTORATION IN ACCORDANCE WITH NYS DOT STANDARD DESIGN CRITERIA AND IN ACCORDANCE WITH THE NYS DOT ROAD WORK PERMIT.

UTILITY CROSSING TABLE														
CROSSING NUMBER	STATION #	PROPOSED FORCE MAIN		EXISTING TELEPHONE		EXISTING ELECTRIC		EXISTING GAS		EXISTING WATER		EXISTING CTV		CLEAR DISTANCE
		TOP OF CONDUIT	BOTTOM OF CONDUIT	TOP OF CONDUIT	BOTTOM OF CONDUIT	TOP OF CONDUIT	TOP OF CONDUIT	TOP OF CONDUIT	BOTTOM OF CONDUIT	TOP OF CONDUIT	BOTTOM OF CONDUIT	TOP OF CONDUIT	BOTTOM OF CONDUIT	
1	20+04	50.72	-	-	-	-	-	-	-	-	53.42	-	-	2.70
2	20+55	51.62	-	-	-	-	56.35	-	-	-	-	-	-	4.73
3	20+73	51.94	-	-	56.46	-	-	-	-	-	-	-	-	4.52
4	20+81	52.10	-	-	-	-	56.54	-	-	-	-	-	-	4.44
5	20+83	52.12	-	-	-	-	-	-	-	-	-	-	56.55	4.43
6	20+84	52.16	-	-	-	-	-	-	56.49	-	-	-	-	4.33
7	21+66	53.20	-	-	-	-	-	-	-	54.79	-	-	-	1.59
8	22+63	53.70	-	-	-	-	-	-	-	-	-	-	58.05	4.35
9	22+64	53.70	-	-	-	-	58.05	-	-	-	-	-	-	4.35
10	23+74	54.27	-	-	-	-	-	-	-	56.35	-	-	-	2.08
11	24+01	54.41	-	-	58.75	-	-	-	-	-	-	-	-	4.34
12	24+13	54.47	-	-	-	-	59.08	-	-	-	-	-	-	4.61
13	25+14	54.95	-	-	-	-	-	60.11	-	-	-	-	-	5.16
14	25+15	54.98	-	-	-	-	-	-	-	-	-	60.11	-	5.13
15	25+17	55.00	-	-	59.54	-	-	-	-	-	-	-	-	4.54
16	25+97	55.31	-	-	-	-	-	-	-	56.84	-	-	-	1.53

CLEANOUT SCHEDULE	
STATION #	TYPE
21+34	INLINE
24+66	INLINE
28+66	INLINE

REVISED: 09-28-17 NYS DOT COMMENTS
 REVISED: 07-28-17 PER SCDHS COMMENTS
 REVISED: 07-18-17 PER TOWN OF ISLIP & SCDPW COMMENTS
 REVISED: 04-19-17 PER TOWN OF ISLIP, SCDHS & SCDPW COMMENTS
 REVISED: 12-16-16 PER TOWN OF ISLIP COMMENTS
 REVISED: 12-02-16 100% DD DRAWINGS
 REVISED: 10-28-16 SCDHS SUBMISSION

H 2 M architects + engineers
 538 Broad Hollow Road
 4th Floor East
 Melville, NY 11747
 P: (631) 756-8000
 F: (631) 694-4122

Melville, NY 11747
 Albany, NY 12205
 White Plains, NY 11601
 New City, NY 10956
 Parsippany, NJ 07054
 Howell, NJ 11601

COUNTY OF SUFFOLK
 D.P.W. - DIVISION OF SANITATION

APPROVED
 APPROVED AS NOTED
 DISAPPROVED

THESE PLANS AND SPECIFICATIONS HAVE BEEN REVIEWED FOR THE ABILITY OF THE SYSTEM TO CONFORM TO SUFFOLK COUNTY WASTE WATER TREATMENT REQUIREMENTS. APPROVAL OF THESE DOCUMENTS SHALL IN NO WAY RELIEVE THE DESIGN ENGINEER OF RESPONSIBILITY FOR THE ADEQUACY OF THE COMPLETE DESIGN. THIS APPROVAL EXPIRES TWO YEARS FROM THE DATE BELOW.

BY _____ DATE _____

S.C.D.P.W. APPROVAL

DESIGNED BY: NFB/SKH
 DRAWN BY: SKH
 CHECKED BY: []
 DATE: 07/18/2017
 PROJECT NO: SHEL-1501
 SCALE: []

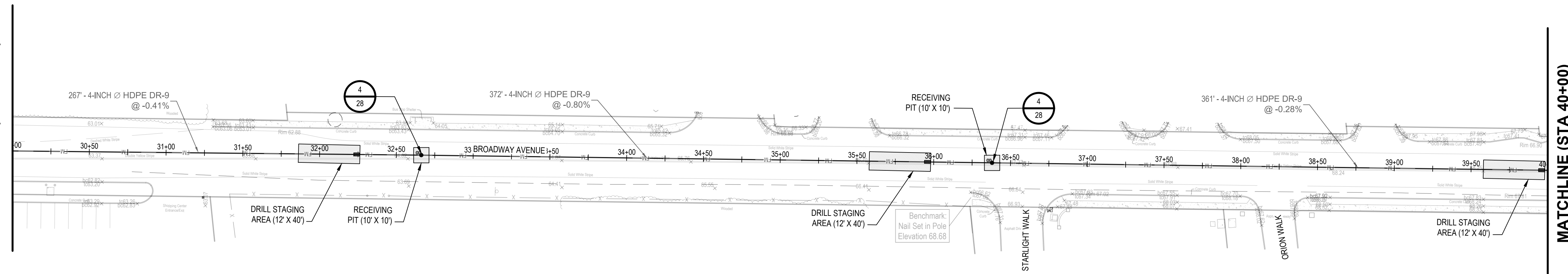
BRIGHTVIEW AT SAYVILLE
 S/E/C BROADWAY AVENUE & SUNRISE HIGHWAY
 S.C.T.M. DISTRICT 500, SEC 238, BLOCK 2, LOT(S) 3.2 & 4
 TOWN OF ISLIP, HAMLET OF SAYVILLE SUFFOLK COUNTY, NY
 TOWN OF ISLIP SITE PLAN NUMBER # SP2016-057
 SCDHS REFERENCE NO.: C05-16-0055 / SCDPW REFERENCE NO.: IS 1604
 NYS DOT PERM 32 CASE NO.: 51014 / NYS DOT PERM 33 CASE NO.: 51009

SANITARY FORCE MAIN
 STA 20+00 - STA 30+00

SHEET
 23
 OF
 54

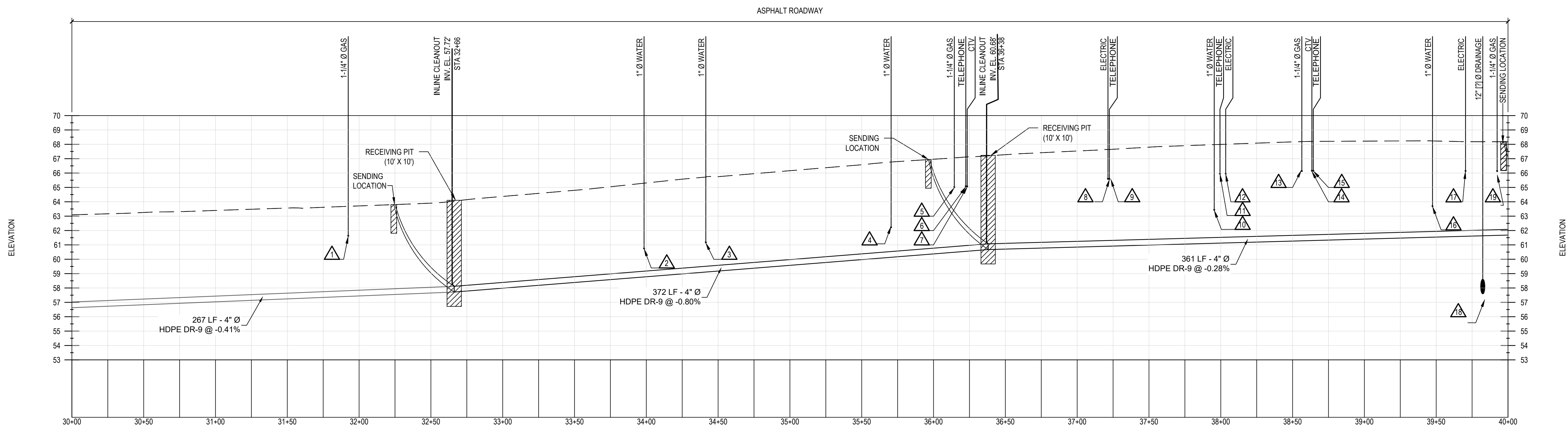
ALTERATION OF THIS DOCUMENT, EXCEPT BY A LICENSED PROFESSIONAL ENGINEER IN ACCORDANCE WITH SECTION 7209 OF NY STATE EDUCATION LAW, IS ILLEGAL.

MATCHLINE (STA 30+00)



MATCHLINE (STA 40+00)

Plan (Sta 30+00 - 40+00)
SCALE: 1" = 40'-0"



PROFILE 30+00 to 40+00
VERTICAL SCALE: 1" = 4'
HORIZONTAL SCALE: 1" = 40'

UTILITY CROSSING TABLE

CROSSING NUMBER	STATION #	PROPOSED FORCE MAIN		EXISTING TELEPHONE		EXISTING ELECTRIC		EXISTING GAS		EXISTING WATER		EXISTING DRAINAGE		EXISTING CTV		CLEAR DISTANCE
		TOP OF CONDUIT	BOTTOM OF CONDUIT	TOP OF CONDUIT	BOTTOM OF CONDUIT	TOP OF CONDUIT	TOP OF CONDUIT	TOP OF CONDUIT	BOTTOM OF CONDUIT	TOP OF CONDUIT	BOTTOM OF CONDUIT	TOP OF CONDUIT	BOTTOM OF CONDUIT	TOP OF CONDUIT	BOTTOM OF CONDUIT	
1	31+92	57.81	-	-	-	-	-	-	61.59	-	-	-	-	-	-	3.78
2	33+99	59.17	-	-	-	-	-	-	-	-	60.71	-	-	-	-	1.54
3	34+42	59.51	-	-	-	-	-	-	-	-	61.14	-	-	-	-	1.63
4	35+70	60.54	-	-	-	-	-	-	-	-	62.19	-	-	-	-	1.65
5	36+15	60.88	-	-	-	-	-	64.98	-	-	-	-	-	-	-	4.10
6	36+22	60.95	-	-	65.04	-	-	-	-	-	-	-	-	-	-	4.09
7	36+24	60.96	-	-	-	-	-	-	-	-	-	-	-	65.04	-	4.08
8	37+22	61.31	-	-	-	65.56	-	-	-	-	-	-	-	-	-	4.25
9	37+23	61.31	-	-	65.56	-	-	-	-	-	-	-	-	-	-	4.25
10	37+95	61.51	-	-	-	-	-	-	-	-	63.40	-	-	-	-	1.89
11	38+00	61.52	-	-	65.91	-	-	-	-	-	-	-	-	-	-	4.39
12	38+04	61.53	-	-	-	65.92	-	-	-	-	-	-	-	-	-	4.39
13	38+57	61.68	-	-	-	-	-	66.10	-	-	-	-	-	-	-	4.42
14	38+64	61.70	-	-	-	-	-	-	-	-	-	-	-	66.12	-	4.42
15	38+65	61.71	-	-	66.12	-	-	-	-	-	-	-	-	-	-	4.41
16	39+47	61.93	-	-	-	-	-	-	-	-	63.65	-	-	-	-	1.72
17	39+70	62.00	-	-	-	66.09	-	-	-	-	-	-	-	-	-	4.09
18	39+82	62.03	-	-	-	-	-	-	-	-	-	-	57.60	-	-	4.43
19	39+92	62.06	-	-	-	-	-	66.10	-	-	-	-	-	-	-	4.04

CLEANOUT SCHEDULE

STATION #	TYPE
32+66	INLINE
36+38	INLINE

REVISED: 09-28-17 NYSDOT COMMENTS
 REVISED: 07-28-17 PER SCDHS COMMENTS
 REVISED: 07-18-17 PER TOWN OF ISLIP & SCDPW COMMENTS
 REVISED: 04-19-17 PER TOWN OF ISLIP, SCDHS & SCDPW COMMENTS
 REVISED: 12-16-16 PER TOWN OF ISLIP COMMENTS
 REVISED: 12-02-16 100% DD DRAWINGS
 REVISED: 10-28-16 SCDHS SUBMISSION

H 2 M architects + engineers
 538 Broad Hollow Road
 4th Floor East
 Melville, NY 11747
 P: (631) 756-8000
 F: (631) 694-4122

Melville, NY 11747
 Albany, NY 12205
 White Plains, NY 11601
 New City, NY 10956
 Parsippany, NJ 07054
 Howell, NJ 11601

COUNTY OF SUFFOLK
 D.P.W. - DIVISION OF SANITATION

APPROVED
 APPROVED AS NOTED
 DISAPPROVED

THESE PLANS AND SPECIFICATIONS HAVE BEEN REVIEWED FOR THE ABILITY OF THE SYSTEM TO CONFORM TO SUFFOLK COUNTY WASTE WATER TREATMENT REQUIREMENTS. APPROVAL OF THESE DOCUMENTS SHALL IN NO WAY RELIEVE THE DESIGN ENGINEER OF RESPONSIBILITY FOR THE ADEQUACY OF THE COMPLETE DESIGN. THIS APPROVAL EXPIRES TWO YEARS FROM THE DATE BELOW.

BY _____ DATE _____

S.C.D.P.W. APPROVAL

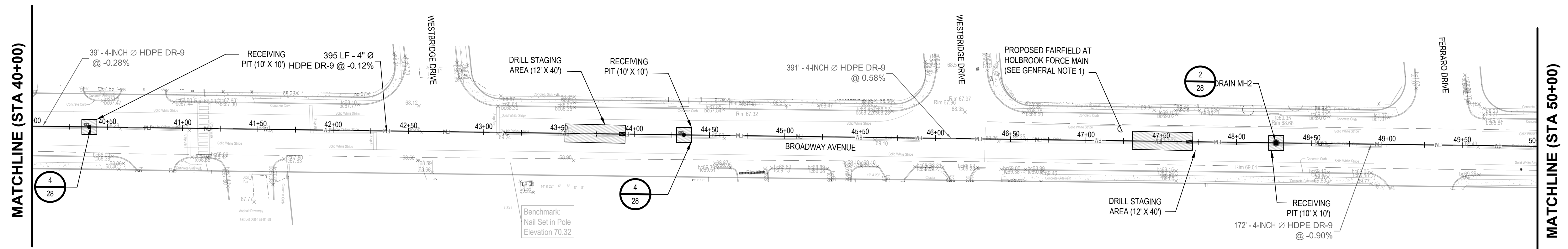
DESIGNED BY: NFB/SKH
 DRAWN BY: SKH
 CHECKED BY: Q
 PROJECT NO: SHEL-1501
 DATE: 07/18/2017
 SCALE:

BRIGHTVIEW AT SAYVILLE
 S/E/C BROADWAY AVENUE & SUNRISE HIGHWAY
 SCTM. DISTRICT 500, SEC 238, BLOCK 2, LOT(S): 3.2 & 4
 TOWN OF ISLIP, HAMLET OF SAYVILLE SUFFOLK COUNTY, NY
 TOWN OF ISLIP SITE PLAN NUMBER # SP2016-057
 SCDHS REFERENCE NO.: C05-16-0055 / SCDPW REFERENCE NO.: IS 1604
 NYSDOT PERM 32 CASE NO.: 51014 / NYSDOT PERM 33 CASE NO.: 51009

SANITARY FORCE MAIN
 STA 30+00 - STA 40+00

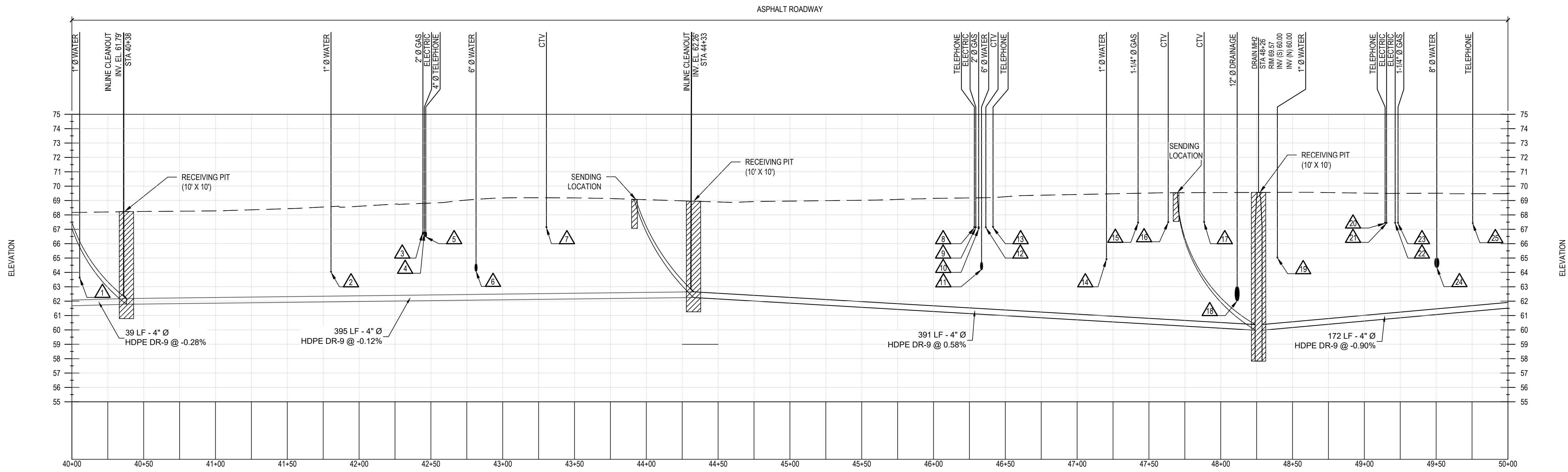
SHEET 24 OF 54

ALTERATION OF THIS DOCUMENT, EXCEPT BY A LICENSED PROFESSIONAL ENGINEER IN ACCORDANCE WITH SECTION 7209 OF NY STATE EDUCATION LAW, IS ILLEGAL.



Plan (Sta 40+00 - 50+00)
SCALE: 1" = 40'-0"

- GENERAL NOTES:**
1. PROPOSED FAIRFIELD AT HOLBROOK FORCE MAIN LOCATION BASED ON "FORCE MAIN ROUTING PLAN" SHEET BY NELSON & POPE, DATED 6/10/16.



PROFILE 40+00 TO 50+00
VERTICAL SCALE: 1" = 4'
HORIZONTAL SCALE: 1" = 40'

UTILITY CROSSING TABLE

CROSSING NUMBER	STATION #	PROPOSED FORCE MAIN		EXISTING TELEPHONE		EXISTING ELECTRIC		EXISTING GAS		EXISTING WATER		EXISTING DRAINAGE		EXISTING CTV		CLEAR DISTANCE
		TOP OF CONDUIT	BOTTOM OF CONDUIT	TOP OF CONDUIT	BOTTOM OF CONDUIT	TOP OF CONDUIT	TOP OF CONDUIT	TOP OF CONDUIT	BOTTOM OF CONDUIT	TOP OF CONDUIT	BOTTOM OF CONDUIT	TOP OF CONDUIT	BOTTOM OF CONDUIT	TOP OF CONDUIT	BOTTOM OF CONDUIT	
1	40+05	62.10	-	-	-	-	-	-	-	63.60	-	-	-	-	-	1.50
2	41+81	62.35	-	-	-	-	-	-	-	64.00	-	-	-	-	-	1.65
3	42+45	62.42	-	-	-	-	-	66.64	-	-	-	-	-	-	-	4.22
4	42+45	62.43	-	-	-	66.72	-	-	-	-	-	-	-	-	-	4.29
5	42+46	62.43	-	-	66.48	-	-	-	-	-	-	-	-	-	-	4.05
6	42+81	62.47	-	-	-	-	-	-	-	64.08	-	-	-	-	-	1.61
7	43+31	62.53	-	-	-	-	-	-	-	-	-	-	-	67.11	-	4.58
8	46+29	61.55	-	-	67.11	-	-	-	-	-	-	-	-	-	-	5.56
9	46+30	61.54	-	-	-	67.11	-	-	-	-	-	-	-	-	-	5.57
10	46+31	61.52	-	-	-	-	-	67.02	-	-	-	-	-	-	-	5.50
11	46+33	61.51	-	-	-	-	-	-	-	64.20	-	-	-	-	-	2.69
12	46+36	61.50	-	-	-	-	-	-	-	-	-	-	-	67.11	-	5.61
13	46+41	61.47	-	-	67.12	-	-	-	-	-	-	-	-	-	-	5.65
14	47+21	61.00	-	-	-	-	-	-	-	64.88	-	-	-	-	-	3.88
15	47+42	60.88	-	-	-	-	-	67.42	-	-	-	-	-	-	-	6.54
16	47+64	60.75	-	-	-	-	-	-	-	-	-	-	-	67.46	-	6.71
17	47+88	60.62	-	-	-	-	-	-	-	-	-	-	-	67.47	-	6.85
18	48+11	60.47	-	-	-	-	-	-	-	-	-	62.02	-	-	-	1.55
19	48+39	60.47	-	-	-	-	-	-	-	64.99	-	-	-	-	-	4.52
20	49+14	61.14	-	-	67.42	-	-	-	-	-	-	-	-	-	-	6.28
21	49+16	61.15	-	-	-	67.41	-	-	-	-	-	-	-	-	-	6.26
22	49+22	61.21	-	-	-	67.42	-	-	-	-	-	-	-	-	-	6.21
23	49+23	61.24	-	-	-	-	-	67.42	-	-	-	-	-	-	-	6.18
24	49+51	61.47	-	-	-	-	-	-	-	64.34	-	-	-	-	-	2.87
25	49+75	61.69	-	-	67.39	-	-	-	-	-	-	-	-	-	-	5.70

CLEANOUT SCHEDULE

CROSSING NUMBER	STATION #
40+38	INLINE
44+33	INLINE

REVISED: 09-28-17 NYSDOT COMMENTS
 REVISED: 07-28-17 PER SCDHS COMMENTS
 REVISED: 07-18-17 PER TOWN OF ISLIP & SCDPW COMMENTS
 REVISED: 04-19-17 PER TOWN OF ISLIP, SCDHS & SCDPW COMMENTS
 REVISED: 12-16-16 PER TOWN OF ISLIP COMMENTS
 REVISED: 12-02-16 100% DD DRAWINGS
 REVISED: 10-28-16 SCDHS SUBMISSION

H 2 M architects + engineers
 538 Broad Hollow Road
 4th Floor East
 Melville, NY 11747
 P: (631) 756-8000
 F: (631) 694-4122

Melville, NY 11747
 Albany, NY 12205
 White Plains, NY 11601
 New City, NY 10956
 Parsippany, NJ 07054
 Howell, NJ 11601

COUNTY OF SUFFOLK
 D.P.W. - DIVISION OF SANITATION

APPROVED
 APPROVED AS NOTED
 DISAPPROVED

THESE PLANS AND SPECIFICATIONS HAVE BEEN REVIEWED FOR THE ABILITY OF THE SYSTEM TO CONFORM TO SUFFOLK COUNTY WASTE WATER TREATMENT REQUIREMENTS. APPROVAL OF THESE DOCUMENTS SHALL IN NO WAY RELIEVE THE DESIGN ENGINEER OF RESPONSIBILITY FOR THE ADEQUACY OF THE COMPLETE DESIGN. THIS APPROVAL EXPIRES TWO YEARS FROM THE DATE BELOW.

BY _____ DATE _____

S.C.D.P.W. APPROVAL

DESIGNED BY: NFB/SKH
 DRAWN BY: SKH
 CHECKED BY: []
 Q: []

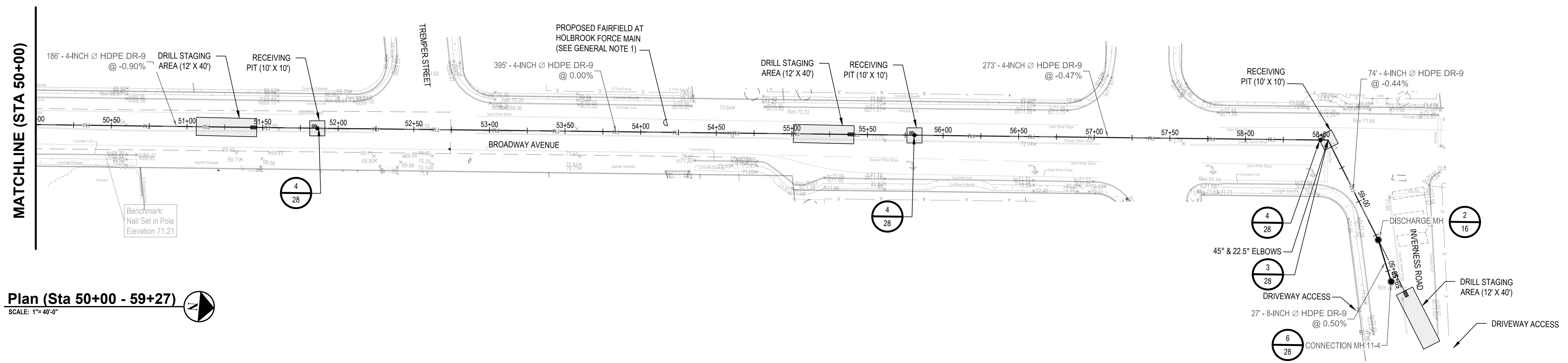
PROJECT NO.: SHEL-1501
 DATE: 07/18/2017
 SCALE: []

BRIGHTVIEW AT SAYVILLE
 S/E/C BROADWAY AVENUE & SUNRISE HIGHWAY
 S.C.T.M. DISTRICT 500, SEC 238, BLOCK 2, LOT(S) 3.2 & 4
 TOWN OF ISLIP, HAMLET OF SAYVILLE SUFFOLK COUNTY, NY
 TOWN OF ISLIP SITE PLAN NUMBER # SP2016-057
 SCDHS REFERENCE NO.: C05-16-0055 / SCDPW REFERENCE NO.: IS 1604
 NYSDOT PERM 32 CASE NO.: 51014 / NYSDOT PERM 33 CASE NO.: 51009

SANITARY FORCE MAIN
 STA 40+00 - STA 50+00

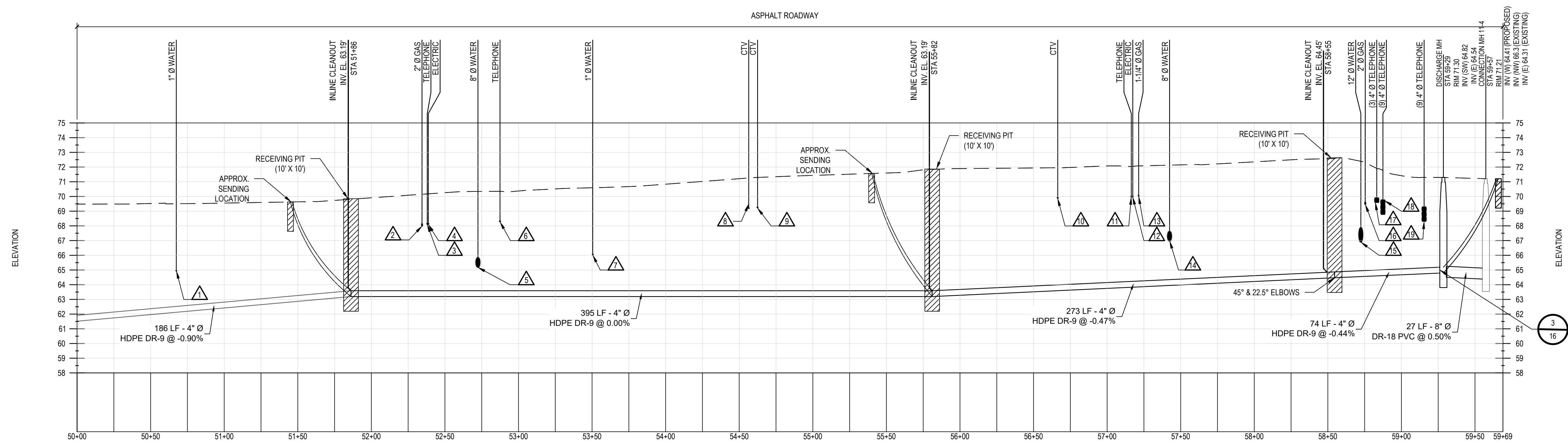
SHEET 25 OF 54

ALTERATION OF THIS DOCUMENT, EXCEPT BY A LICENSED PROFESSIONAL ENGINEER IN ACCORDANCE WITH SECTION 7209 OF NY STATE EDUCATION LAW, IS ILLEGAL.



- GENERAL NOTES:**
- PROPOSED FAIRFIELD AT HOLBROOK FORCE MAIN LOCATION BASED ON "FORCE MAIN ROUTING PLAN" SHEET BY NELSON & POPE, DATED 8/10/16.
- EXISTING MANHOLE 11-4 MODIFICATION NOTES:**
- PROTECT EXISTING FORCEMAIN WHEN CORE DRILLING NEW OPENING FOR NEW GRAVITY SEWER CONNECTION.
 - CHOP OUT EXISTING BENCH AND INSTALL NEW BENCH TO CHANNEL FLOW FROM EXISTING FORCEMAIN AND NEW SEWER CONNECTION TO EXISTING EFFLUENT GRAVITY SEWER FROM MANHOLE. REFER TO DETAIL 6 ON SHEET 28.

Plan (Sta 50+00 - 59+27)
SCALE: 1" = 40'-0"



PROFILE 50+00 TO 59+27
VERTICAL SCALE: 1" = 4'
HORIZONTAL SCALE: 1" = 40'

UTILITY CROSSING TABLE														
CROSSING NUMBER	STATION #	PROPOSED FORCE MAIN		EXISTING TELEPHONE		EXISTING ELECTRIC		EXISTING GAS		EXISTING WATER		EXISTING CTV		CLEAR DISTANCE
		TOP OF CONDUIT	BOTTOM OF CONDUIT	TOP OF CONDUIT	BOTTOM OF CONDUIT	TOP OF CONDUIT	TOP OF CONDUIT	TOP OF CONDUIT	BOTTOM OF CONDUIT	TOP OF CONDUIT	BOTTOM OF CONDUIT	TOP OF CONDUIT	BOTTOM OF CONDUIT	
1	50+68	62.52	-	-	-	-	-	-	-	-	64.92	-	-	2.40
2	52+35	63.59	-	-	-	-	-	-	67.99	-	-	-	-	4.40
3	52+38	63.59	-	-	68.09	-	-	-	-	-	-	-	-	4.50
4	52+39	63.59	-	-	-	-	68.10	-	-	-	-	-	-	4.51
5	52+73	63.59	-	-	-	-	-	-	-	65.18	-	-	-	1.59
6	52+87	63.59	-	-	68.27	-	-	-	-	-	-	-	-	4.68
7	53+50	63.59	-	-	-	-	-	-	-	66.01	-	-	-	2.42
8	54+56	63.59	-	-	-	-	-	-	-	-	-	69.17	-	5.58
9	54+62	63.59	-	-	-	-	-	-	-	-	-	69.21	-	5.62
10	56+66	64.00	-	-	-	-	-	-	-	-	-	69.86	-	5.86
11	57+16	64.22	-	-	69.95	-	-	-	-	-	-	-	-	5.73
12	57+17	64.23	-	-	-	-	69.96	-	-	-	-	-	-	5.73
13	57+21	64.25	-	-	-	-	-	70.00	-	-	-	-	-	5.75
14	57+42	64.35	-	-	-	-	-	-	-	66.96	-	-	-	2.61
15	58+72	64.95	-	-	-	-	-	-	-	66.89	-	-	-	1.94
16	58+76	64.96	-	-	-	-	-	-	69.46	-	-	-	-	4.50
17	58+83	65.00	-	-	69.58	-	-	-	-	-	-	-	-	4.58
18	58+88	65.02	-	-	68.78	-	-	-	-	-	-	-	-	3.76
19	59+16	65.14	-	-	68.30	-	-	-	-	-	-	-	-	3.16

CLEANOUT SCHEDULE	
CROSSING NUMBER	STATION #
51+86	INLINE
55+82	INLINE
58+55	INLINE

REVISED: 09-28-17 NYSDOT COMMENTS
 REVISED: 07-28-17 PER SCDHS COMMENTS
 REVISED: 07-18-17 PER TOWN OF ISLIP & SCDPW COMMENTS
 REVISED: 04-19-17 PER TOWN OF ISLIP, SCDHS & SCDPW COMMENTS
 REVISED: 12-16-16 PER TOWN OF ISLIP COMMENTS
 REVISED: 12-02-16 100% DD DRAWINGS
 REVISED: 10-28-16 SCDHS SUBMISSION

H 2 M architects + engineers
 538 Broad Hollow Road
 4th Floor East
 Melville, NY 11747
 P:(631)756-8000
 F:(631)694-4122

Melville, NY 11747
 Albany, NY 12205
 White Plains, NY 11601
 New City, NY 10956
 Parsippany, NJ 07054
 Howell, NJ 11601

COUNTY OF SUFFOLK
 D.P.W. - DIVISION OF SANITATION

APPROVED
 APPROVED AS NOTED
 DISAPPROVED

THESE PLANS AND SPECIFICATIONS HAVE BEEN REVIEWED FOR THE ABILITY OF THE SYSTEM TO CONFORM TO SUFFOLK COUNTY WASTE WATER TREATMENT REQUIREMENTS. APPROVAL OF THESE DOCUMENTS SHALL IN NO WAY RELIEVE THE DESIGN ENGINEER OF RESPONSIBILITY FOR THE ADEQUACY OF THE COMPLETE DESIGN. THIS APPROVAL EXPIRES TWO YEARS FROM THE DATE BELOW.

BY _____ DATE _____

S.C.D.P.W. APPROVAL

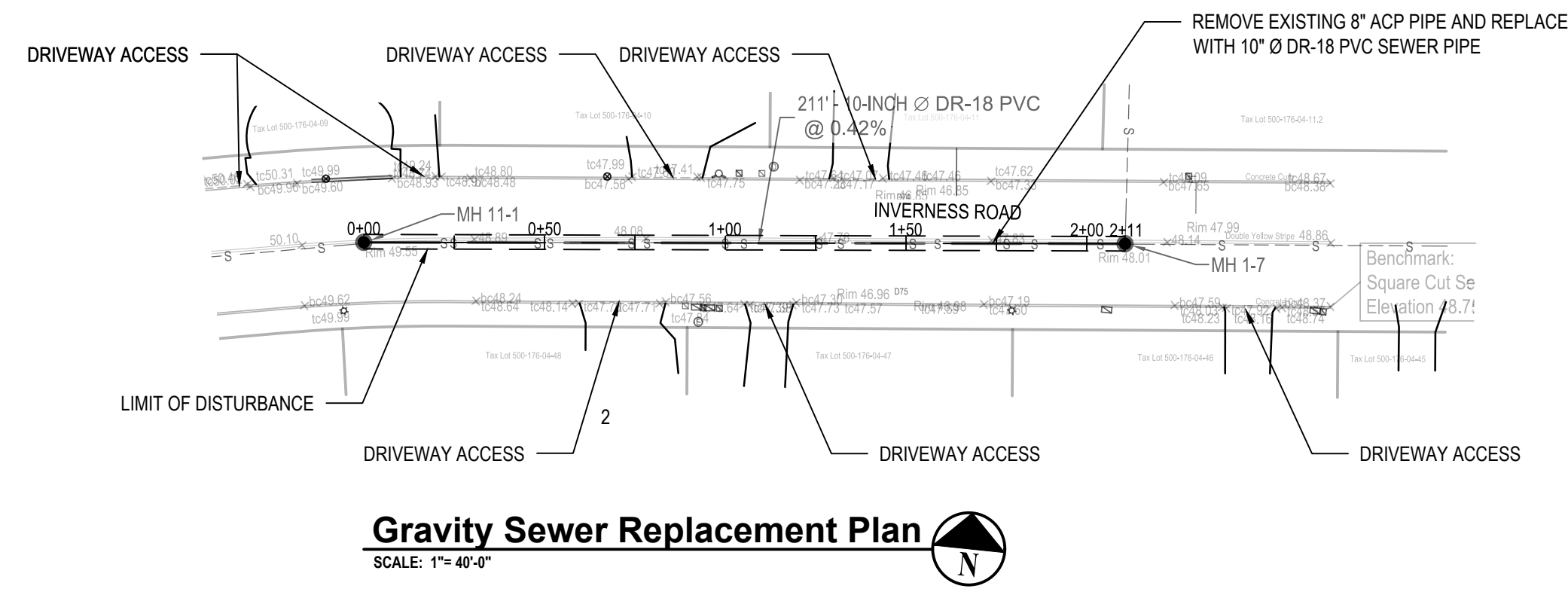
DESIGNED BY: NFB/SKH
 DRAWN BY: SKH
 CHECKED BY: _____
 DATE: 07/18/2017
 PROJECT NO: SHEL-1501
 SCALE: _____

BRIGHTVIEW AT SAYVILLE
 S/E/C BROADWAY AVENUE & SUNRISE HIGHWAY
 SCTM. DISTRICT 500, SEC 238, BLOCK 2, LOT(S) 3.2 & 4
 TOWN OF ISLIP, HAMLET OF SAYVILLE, SUFFOLK COUNTY, NY
 TOWN OF ISLIP SITE PLAN NUMBER # SP2016-057
 SCDHS REFERENCE NO.: C05-16-0055 / SCDPW REFERENCE NO.: IS 1604
 NYSDOT PERM 32 CASE NO.: 51014 / NYSDOT PERM 33 CASE NO.: 51009

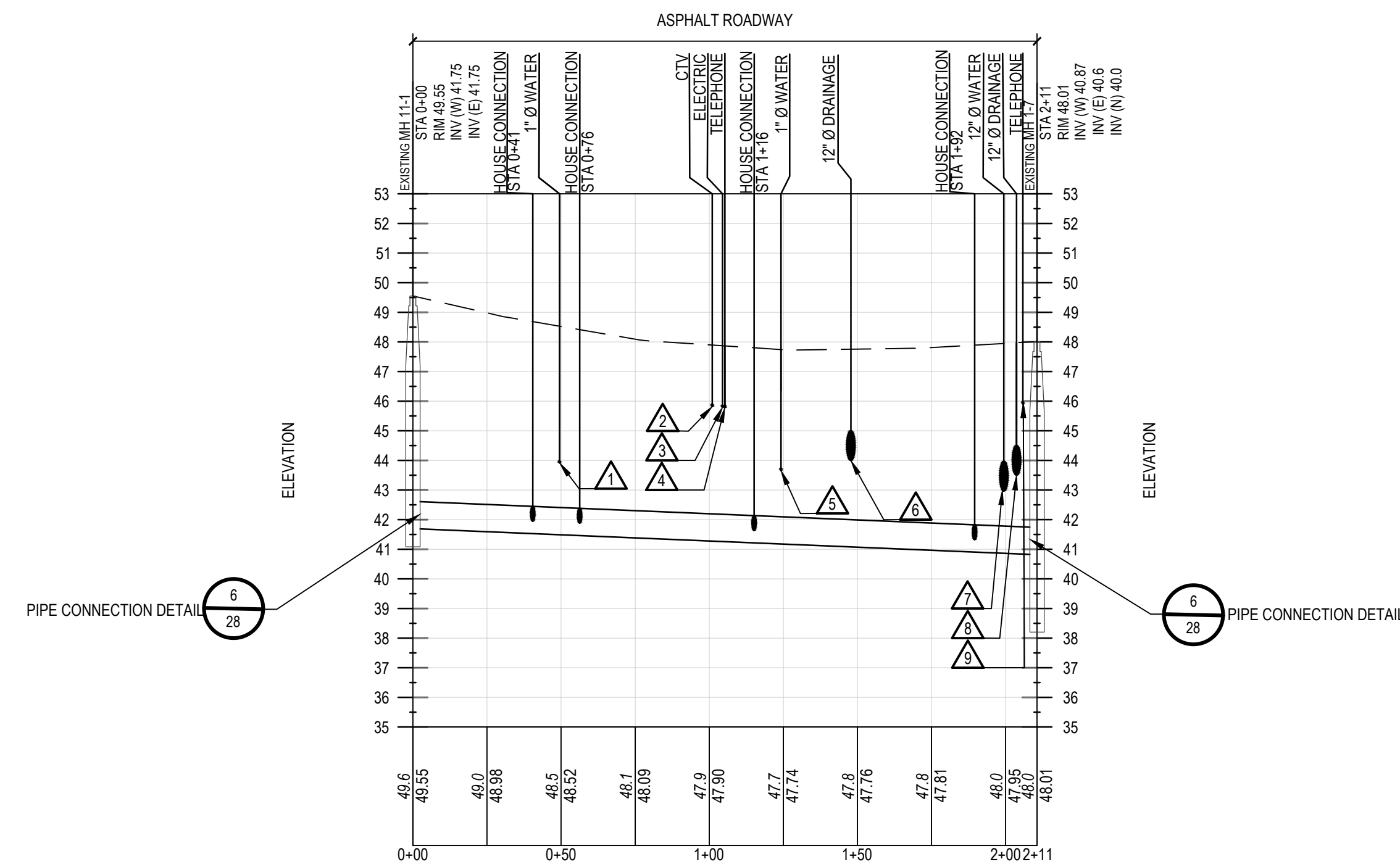
SANITARY FORCE MAIN
STA 50+00 - STA 59+27

SHEET
 26
 OF
 54

ALTERATION OF THIS DOCUMENT, EXCEPT BY A LICENSED PROFESSIONAL ENGINEER IN ACCORDANCE WITH SECTION 7209 OF NY STATE EDUCATION LAW, IS ILLEGAL.



- NOTES:**
- CORE DRILL EXISTING MANHOLES 11-1 AND 1-7 AS NECESSARY TO INSTALL NEW 10" Ø DR-18 PVC SEWER PIPE. IN PLACES OF EXISTING 8" Ø ACP SEWER PROVIDE "KOR-N-SEAL" FLEXIBLE SLEEVE OR APPROVED EQUAL. MATCH EXISTING INVERTS OF 8" Ø ACP WITH NEW 10" Ø DR-18 PVC.
 - PROVIDE BYPASS PUMPING AS NECESSARY TO MAINTAIN OPERATIONS OF COLLECTION SYSTEM IN AREA OF SEWER REPLACEMENT WORK.
 - SCHEDULE REPLACEMENT OF SEWER TO MINIMIZE SERVICE DISRUPTIONS TO HOUSE CONNECTIONS. NOTIFY RESIDENTS OF SERVICE DISRUPTIONS A MINIMUM OF ONE WEEK PRIOR TO REPLACING SEWER PIPE. COORDINATE HOMEOWNER NOTIFICATION WITH SCDPW.
 - REMOVE AND DISPOSE OF EXISTING 8" Ø A.C.P. SEWER PIPE IN ACCORDANCE WITH ALL STATE, TOWN AND LOCAL REGULATORY REQUIREMENTS.
 - EXISTING SEWER SERVICE LATERAL LOCATIONS SHOWN ARE BASED ON RECORD DRAWINGS PREPARED BY PETER VAN WHEGLE & CO. DATED NOVEMBER 25, 1974.
 - PROVIDE TEMPORARY SUPPORT OF EXISTING UTILITIES AT ALL CROSSINGS. CONTRACTOR SHALL ASSUME ALL RESPONSIBILITY FOR DAMAGES CAUSED TO EXISTING UTILITIES AS A RESULT OF WORK. COORDINATE ALL UTILITY REPAIR WORK AT NO ADDITIONAL COST TO THE OWNER.
 - REMOVE AND REINSTALL EXISTING REINFORCED CONCRETE STORM DRAINAGE PIPE WITHIN LIMITS OF PIPE TRENCH UPSTREAM OF MANHOLE S8.



PROFILE VIEW OF GRAVITY SEWER REPLACEMENT 0+00 TO 2+11
 VERTICAL SCALE: 1" = 4'
 HORIZONTAL SCALE: 1" = 40'

CROSSING NUMBER	STATION #	PROPOSED SEWER		EXISTING TELEPHONE		EXISTING ELECTRIC		EXISTING GAS		EXISTING WATER		EXISTING DRAINAGE		EXISTING CTV		CLEAR DISTANCE
		TOP OF CONDUIT	BOTTOM OF CONDUIT	TOP OF CONDUIT	BOTTOM OF CONDUIT	TOP OF CONDUIT	TOP OF CONDUIT	TOP OF CONDUIT	BOTTOM OF CONDUIT	TOP OF CONDUIT	BOTTOM OF CONDUIT	TOP OF CONDUIT	BOTTOM OF CONDUIT	TOP OF CONDUIT	BOTTOM OF CONDUIT	
1	0+50	42.41	-	-	-	-	-	-	-	-	43.95	-	-	-	-	1.54
2	1+00	42.20	-	-	-	-	-	-	-	-	-	-	-	45.62	3.62	
3	1+04	42.18	-	-	-	-	45.79	-	-	-	-	-	-	-	3.61	
4	1+05	42.18	-	-	45.78	-	-	-	-	-	-	-	-	-	3.60	
5	1+24	42.10	-	-	-	-	-	-	-	-	43.16	-	-	-	1.06	
6	1+48	42.00	-	-	-	-	-	-	-	-	-	43.80	-	-	1.80	
7	1+99	41.78	-	-	-	-	-	-	-	42.97	-	-	-	-	2.10	
8	2+04	41.77	-	-	-	-	-	-	-	-	-	43.50	-	-	1.74	
9	2+05	41.76	-	-	45.94	-	-	-	-	-	-	-	-	-	4.18	

REVISED: 09-28-17 NYSDOT COMMENTS
 REVISED: 07-28-17 PER SCDHS COMMENTS
 REVISED: 07-18-17 PER TOWN OF ISLIP & SCDPW COMMENTS
 REVISED: 04-19-17 PER TOWN OF ISLIP, SCDHS & SCDPW COMMENTS
 REVISED: 12-16-16 PER TOWN OF ISLIP COMMENTS
 REVISED: 12-02-16 100% DD DRAWINGS
 REVISED: 10-28-16 SCDHS SUBMISSION

H 2 M architects + engineers
 538 Broad Hollow Road
 4th Floor East
 Melville, NY 11747
 P: (631) 756-0000
 F: (631) 694-4122

Melville, NY 11747
 Albany, NY 12205
 White Plains, NY 11601
 New City, NY 10956
 Parsippany, NJ 07054
 Howell, NJ 11601

COUNTY OF SUFFOLK
 D.P.W. - DIVISION OF SANITATION

APPROVED
 APPROVED AS NOTED
 DISAPPROVED

THESE PLANS AND SPECIFICATIONS HAVE BEEN REVIEWED FOR THE ABILITY OF THE SYSTEM TO CONFORM TO SUFFOLK COUNTY WASTE WATER TREATMENT REQUIREMENTS. APPROVAL OF THESE DOCUMENTS SHALL IN NO WAY RELIEVE THE DESIGN ENGINEER OF RESPONSIBILITY FOR THE ADEQUACY OF THE COMPLETE DESIGN. THIS APPROVAL EXPIRES TWO YEARS FROM THE DATE BELOW.

BY _____ DATE _____

S.C.D.P.W. APPROVAL

DESIGNED BY: NFB/SKH
 DRAWN BY: SKH
 CHECKED BY: Q
 PROJECT NO.: SHEL-1501
 DATE: 07/18/2017
 SCALE:

BRIGHTVIEW AT SAYVILLE
 S/C BROADWAY AVENUE & SUNRISE HIGHWAY
 S/C T. DISTRICT 500, SEC 238, BLOCK 2, LOT(S) 3, 2 & 4
 TOWN OF ISLIP, HAMLET OF SAYVILLE SUFFOLK COUNTY, NY
 TOWN OF ISLIP SITE PLAN NUMBER # SP2016-057
 SCDHS REFERENCE NO.: C05-16-0055 / SCDPW REFERENCE NO.: IS 1604
 NYSDOT PERM 32 CASE NO.: 51014 / NYSDOT PERM 33 CASE NO.: 51009

REPLACEMENT OF EXISTING GRAVITY SEWER MH 11-1 TO MH 1-7

SHEET 27 OF 54

ALTERATION OF THIS DOCUMENT, EXCEPT BY A LICENSED PROFESSIONAL ENGINEER IN ACCORDANCE WITH SECTION 7209 OF NY STATE EDUCATION LAW, IS ILLEGAL.