



2024



HANCOCK CO. HEALTHCARE CENTER

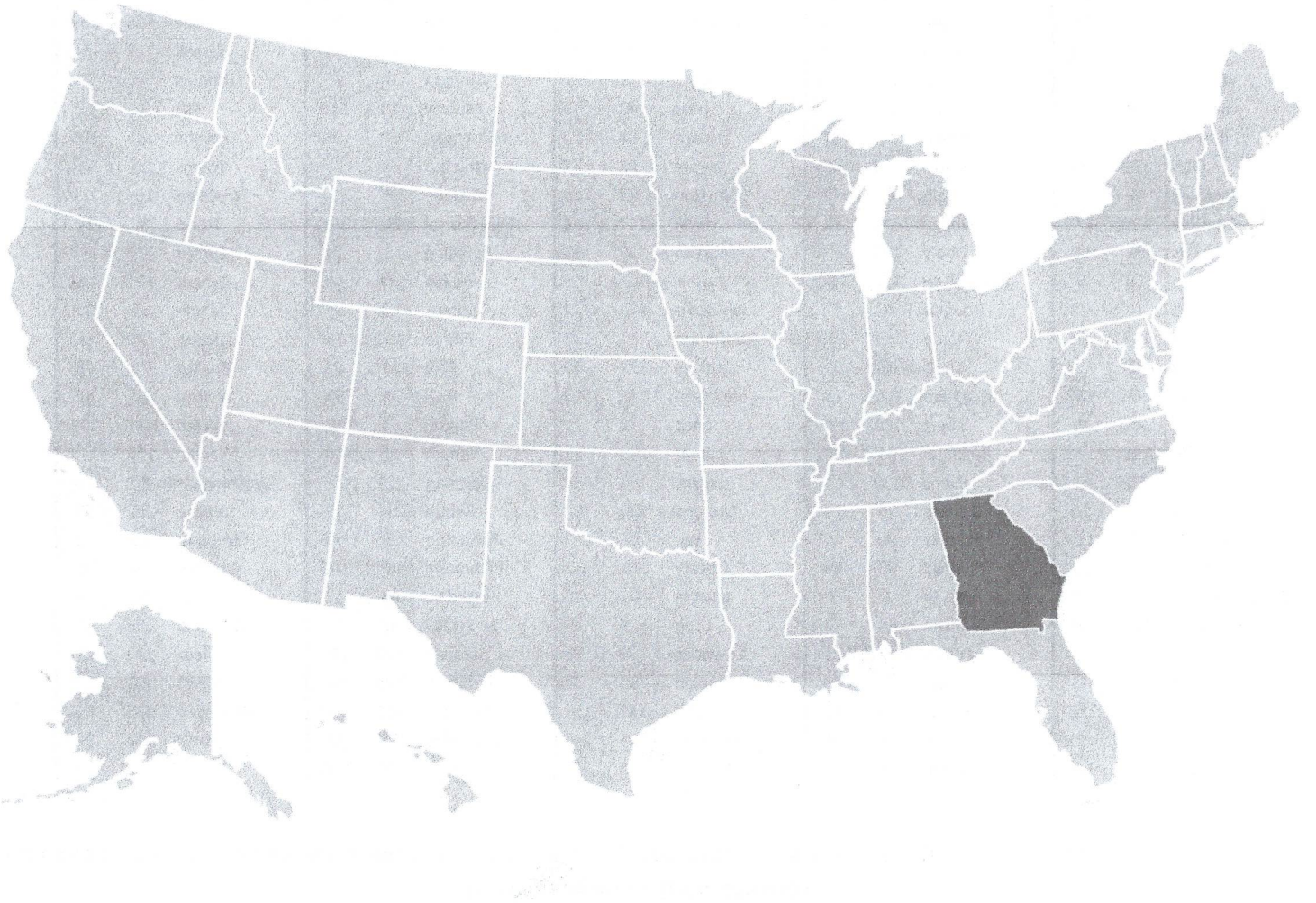
A proposal by Adrick Alexander Ingram
to determine a path to providing
healthcare in Hancock County

www.AdrickIngram.com

**County Health
Rankings & Roadmaps**


Building a Culture of Health, County by County

2022 State Report
Georgia



 University of Wisconsin
Population Health Institute
UNIVERSITY OF WISCONSIN
SCHOOL OF MEDICINE AND PUBLIC HEALTH

Support
provided by

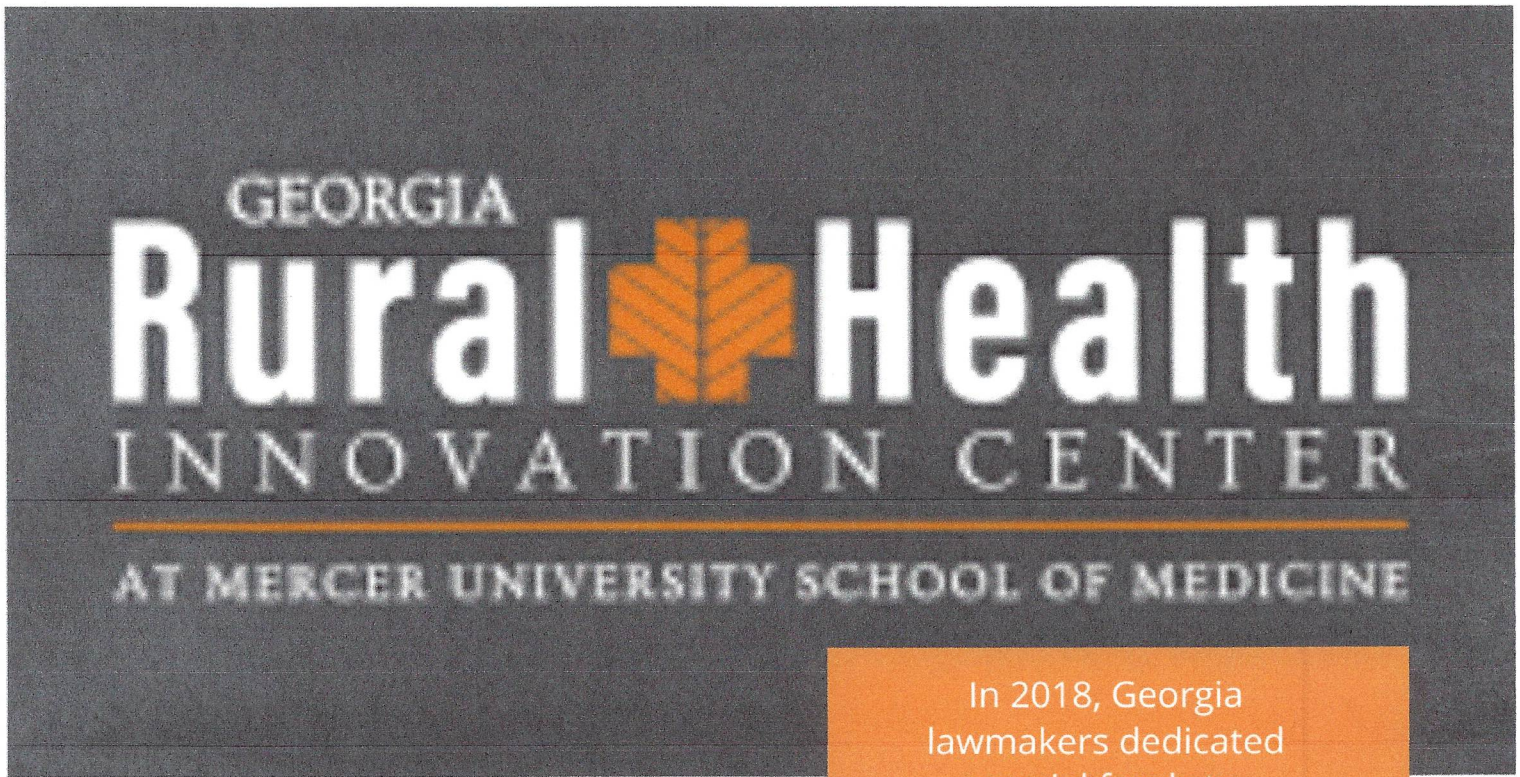

Robert Wood Johnson
Foundation

2022 County Health Rankings for the 159 Ranked Counties in Georgia

County	Health Outcomes	Health Factors	County	Health Outcomes	Health Factors	County	Health Outcomes	Health Factors	County	Health Outcomes	Health Factors	County	Health Outcomes	Health Factors
Appling	113	118	Cobb	5	5	Grady	68	67	McDuffie	146	112	Sumter	123	106
Atkinson	112	137	Coffee	108	129	Greene	53	54	McIntosh	101	68	Talbot	135	139
Bacon	139	123	Colquitt	119	132	Gwinnett	7	14	Meriwether	144	154	Taliaferro	100	135
Baker	77	128	Columbia	6	4	Habersham	28	42	Miller	158	86	Tattnall	62	104
Baldwin	91	95	Cook	107	85	Hall	10	32	Mitchell	134	142	Taylor	97	133
Banks	60	66	Coweta	11	13	Hancock	159	159	Monroe	59	29	Telfair	125	157
Barrow	27	43	Crawford	98	80	Haralson	90	79	Montgomery	71	75	Terrell	142	150
Bartow	45	46	Crisp	155	146	Harris	9	7	Morgan	34	26	Thomas	74	45
Ben Hill	154	131	Dade	52	37	Hart	47	57	Murray	73	111	Tift	93	62
Berrien	117	116	Dawson	17	10	Heard	88	100	Muscogee	92	65	Toombs	115	105
Bibb	129	89	Decatur	118	127	Henry	22	21	Newton	49	77	Towns	13	25
Bleckley	50	51	DeKalb	14	30	Houston	25	16	Oconee	2	1	Treutlen	105	119
Brantley	130	121	Dodge	79	93	Irwin	147	83	Oglethorpe	30	74	Troup	86	97
Brooks	95	92	Dooly	136	144	Jackson	15	15	Paulding	8	23	Turner	138	147
Bryan	18	9	Dougherty	150	120	Jasper	64	55	Peach	104	88	Twiggs	151	117
Bulloch	46	50	Douglas	26	41	Jeff Davis	114	122	Pickens	23	24	Union	31	11
Burke	143	125	Early	157	136	Jefferson	137	153	Pierce	102	76	Upson	140	96
Butts	83	109	Echols	82	91	Jenkins	132	140	Pike	51	22	Walker	75	48
Calhoun	76	145	Effingham	21	18	Johnson	122	108	Polk	85	98	Walton	37	40
Camden	20	19	Elbert	109	126	Jones	32	17	Pulaski	63	87	Ware	127	107
Candler	148	130	Emanuel	94	151	Lamar	106	61	Putnam	41	58	Warren	152	143
Carroll	55	63	Evans	120	114	Lanier	67	84	Quitman	121	152	Washington	80	101
Catoosa	16	20	Fannin	56	27	Laurens	133	82	Rabun	36	39	Wayne	99	99
Charlton	89	110	Fayette	4	2	Lee	33	8	Randolph	156	148	Webster	78	72
Chatham	40	35	Floyd	69	60	Liberty	61	52	Richmond	124	102	Wheeler	44	141
Chattahoochee	39	36	Forsyth	1	3	Lincoln	42	70	Rockdale	43	47	White	19	28
Chattooga	131	155	Franklin	84	71	Long	29	49	Schley	57	31	Whitfield	35	81
Cherokee	3	6	Fulton	12	12	Lowndes	66	53	Screven	110	134	Wilcox	103	124
Clarke	24	33	Gilmer	54	38	Lumpkin	38	34	Seminole	128	94	Wilkes	87	115
Clay	126	158	Glascocock	96	69	Macon	149	156	Spalding	111	103	Wilkinson	145	90
Clayton	70	113	Glynn	65	44	Madison	48	59	Stephens	81	56	Worth	116	78
Clinch	153	149	Gordon	58	64	Marion	72	73	Stewart	141	138			

For more information on how these ranks are calculated, view the technical notes at the end of this report and visit www.countyhealthrankings.org

Partnering with Mercer Medical School



The Mercer University School of Medicine was awarded grant funds from the state of Georgia and formally established the new Georgia Rural Health Innovation Center on its Macon campus. The Mercer University School of Medicine boasts a long-standing commitment to serving rural Georgia's health needs, with a mission to educate physicians dedicated to tackling the health challenges in rural Georgia.

Legislators identified and established numerous charges for the Center, to include the development of research programs, analyzing significant health system problems, and proposing solutions. With that mandate, the Georgia Rural Health Innovation Center partners with rural counties to improve health outcomes in their communities.

In 2018, Georgia lawmakers dedicated special funds to establish a new Rural Health Innovation Center. The Center's responsibilities would be ambitious, tasked with confronting the complex health care challenges and wellness disparities facing rural communities.

Informed by the data and community stakeholders, our diverse team develops targeted improvement projects, evaluates rural health care delivery systems and their fiscal stability, conducts Rapid Action Assessments based on health risk status of the County, and maintains our rural physician and health care access point locator

What will Mercer University provide?



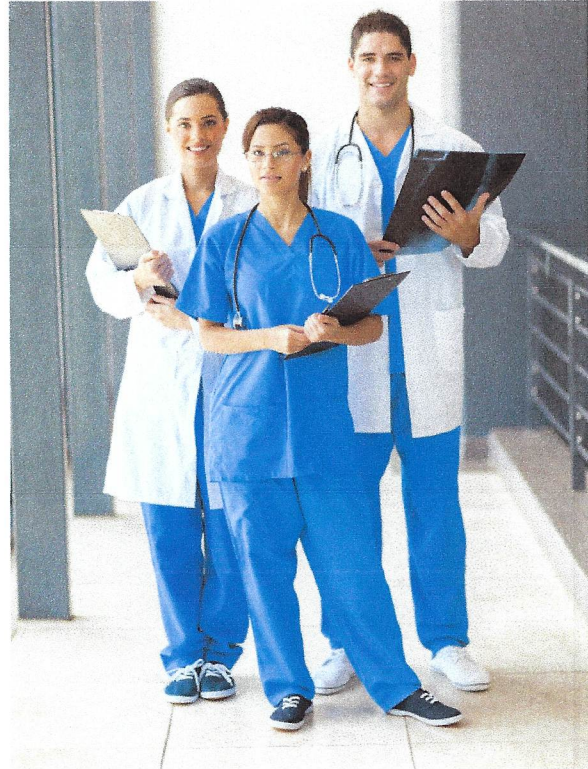
STAFFING: Licensed Physicians, Physician Assistants, Nurse Practitioners, Nurses, and other medical personal. All hired and paid with funds from Mercer University.



EQUIPMENT: All medical equipment needed to provide services to patients will be provided by Mercer University.



FIRST CLASS SERVICE: (Regardless of ability) Because of its mission, Mercer is prepared to serve patients in need of care whether they have private insurance, Medicare, Medicaid, or no insurance at all. This is NOT grant money that may not be available in the future. Funds are provided by Mercer University with the understanding that the Healthcare may not be profitable.



- They are in it for the long haul. They are setting up Healthcare Centers throughout rural Georgia.
- All employees and their children receive a FREE undergraduate education at Mercer University. including
- Proven results in other similar communities

What will happen to Hancock Memorial Hospital Building?

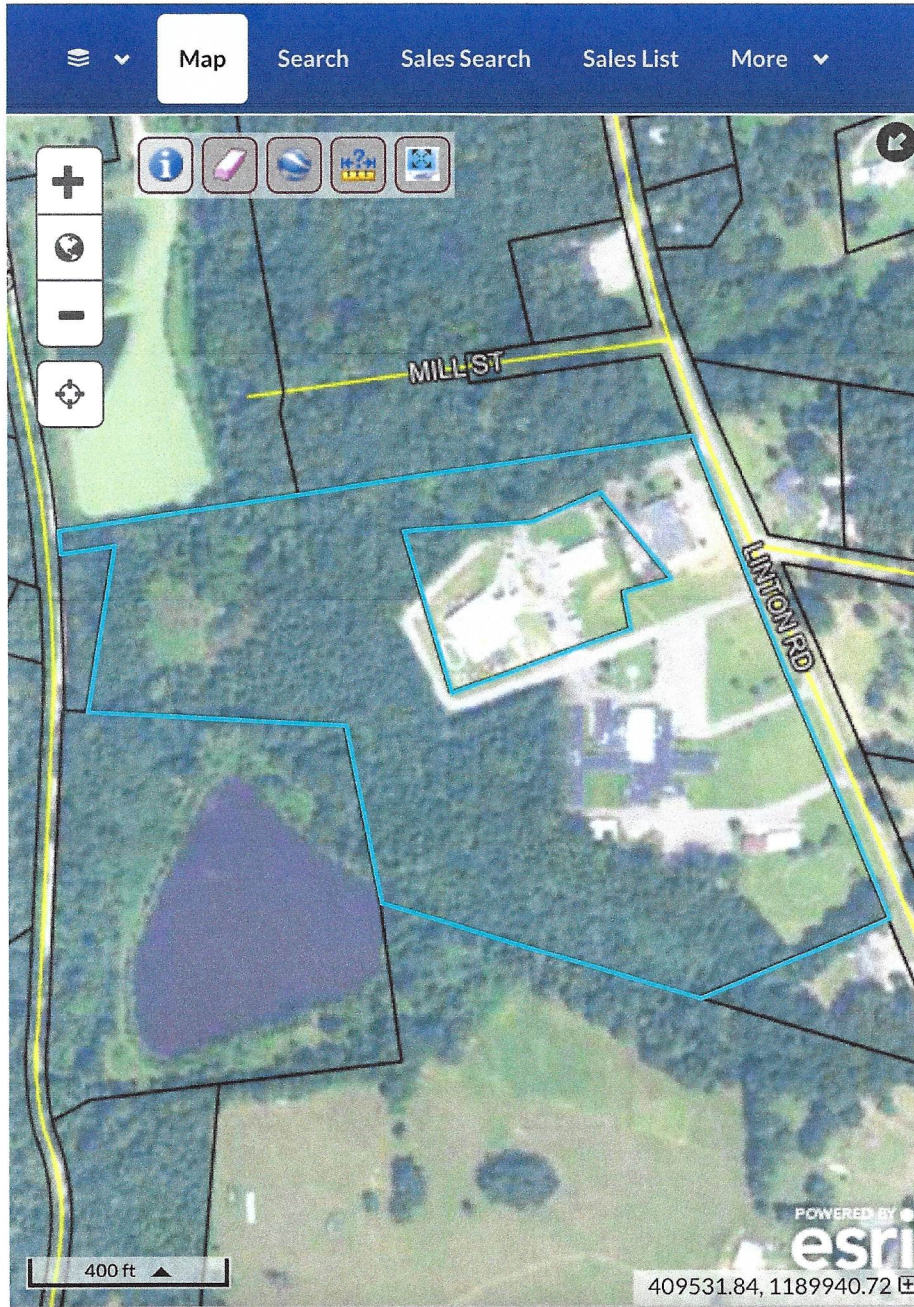
1. If it can be refurbished we will look to use it for office or other commercial use.
2. If it is beyond repair, it will need to be demolished and the land will be cleared.
 - a. EPA may need to be involved if asbestos or other contaminants are present within the building. In this case, The area will likely be considered a Brownfields Project. For more info on Brownfields projects see <https://www.epa.gov/brownfields>.
3. Final decision will be made jointly with Hancock County Hospital Authority and Hancock County Commissioners.



LOCATION



Hancock County, GA



HANCOCK COUNTY HOSPITAL
AUTHORITY
622 LINTON RD
22.40 Acres Value \$74,102



FINANCES

Potential Funding sources include:

Grants

Funds from Local Option Sales Tax

Low-interest USDA Loan

Private Investors

HANCOCK COUNTY WILL BE RESPONSIBLE FOR PROVIDING A BUILDING

Approximate Size:
4000 - 6000 sq. ft.

Building designed for future expansion (see attached design)

Building cost \$150-/\$200 sq. ft.
\$600,000 - \$1,200,000

Micro-Hospital

Modular healthcare facilities are ideal for rural and remote physical locations. Ellis Modular provides physician and dental offices and clinics, urgent care, small regional hospitals, diagnostic centers and physical therapy clinics. We work with your conceptual ideas, project team, and specifications to provide healthcare facilities at a reduced cost, and with a shorter construction timeline. In addition to new builds, consider modular for expansions and additions to existing facilities to help further reduce costs and become operational sooner than traditional construction allows.

The diagrams below illustrate a “phased-build” approach to a rural hospital or large healthcare facility. As a region’s population grows and healthcare demands increase, operational capacity and specialized services can be added as needed over time.

FEATURES

- Family/visitor waiting area
- Reception desk
- Nurse’s station
- 4 staff offices
- 2 exam rooms, 3 exam areas
- Laboratory facilities
- X-ray room/facilities
- 19 patient care rooms
- Kitchen/staff breakroom
- Multiple utility and supply rooms
- Floorplans completely customizable to your needs
- Facilities are expandable and can be added on to as your healthcare services change
- Janitor/utility/sanitization/laundry areas

SIZE:

(example) 10,710 sf

DIMENSIONS:

103' x 162'

FOOTPRINT:

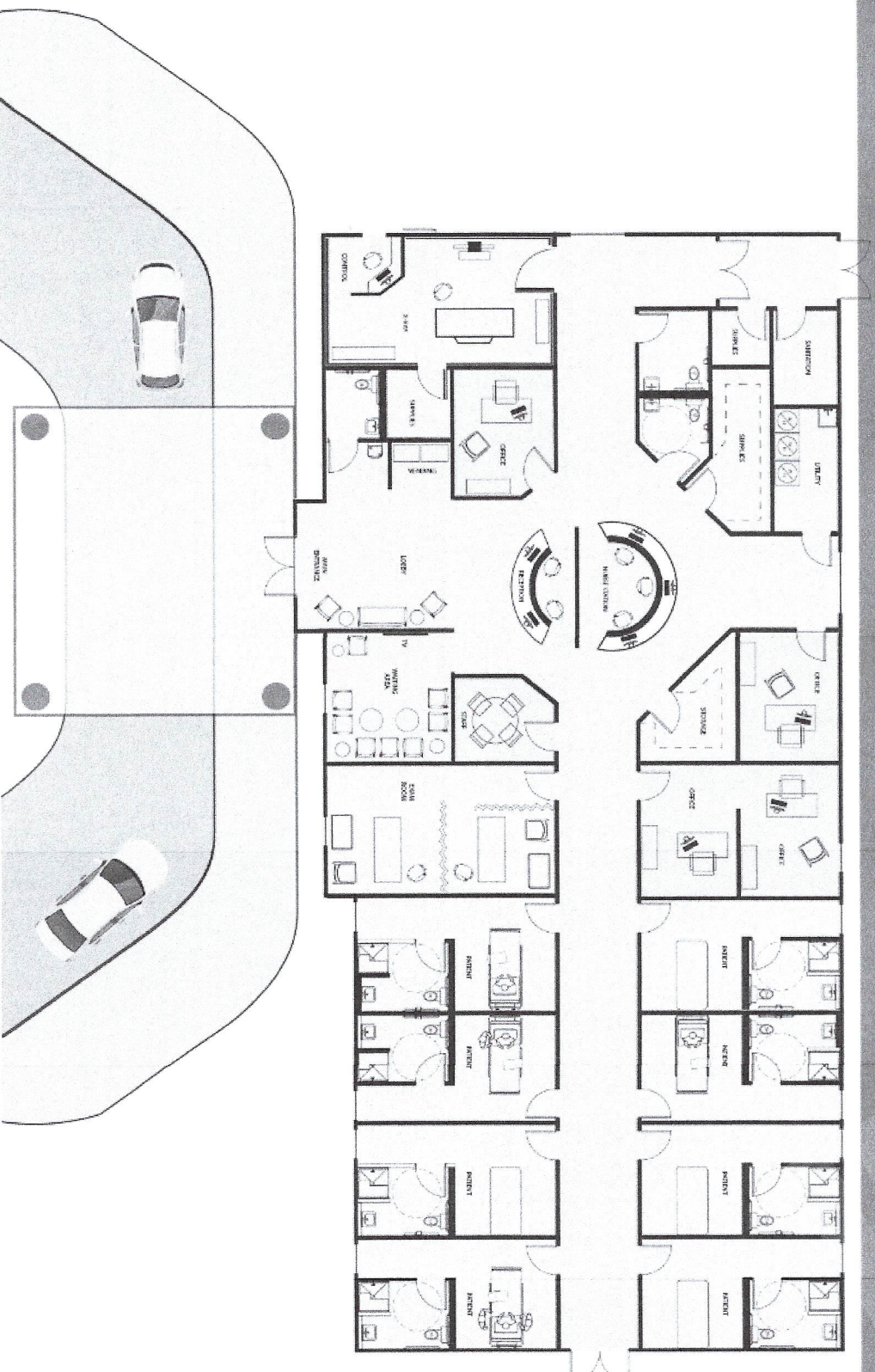
Variable depending on project needs and configuration

[DOWNLOAD PDF](#)

Square footage listed is approximate.

Micro-Hospital - Phased Build

HF10710-A - Phased Build
Phase I - Initial Micro-Hospital Unit
~6010 square feet



The estimated cost to construct Phase 1 is approximately \$2,200,000.00 plus the Property Cost, cost of walkways and driveways, cost of parking areas, landscaping, signage, etc.

Micro-Hospital - Phased Build

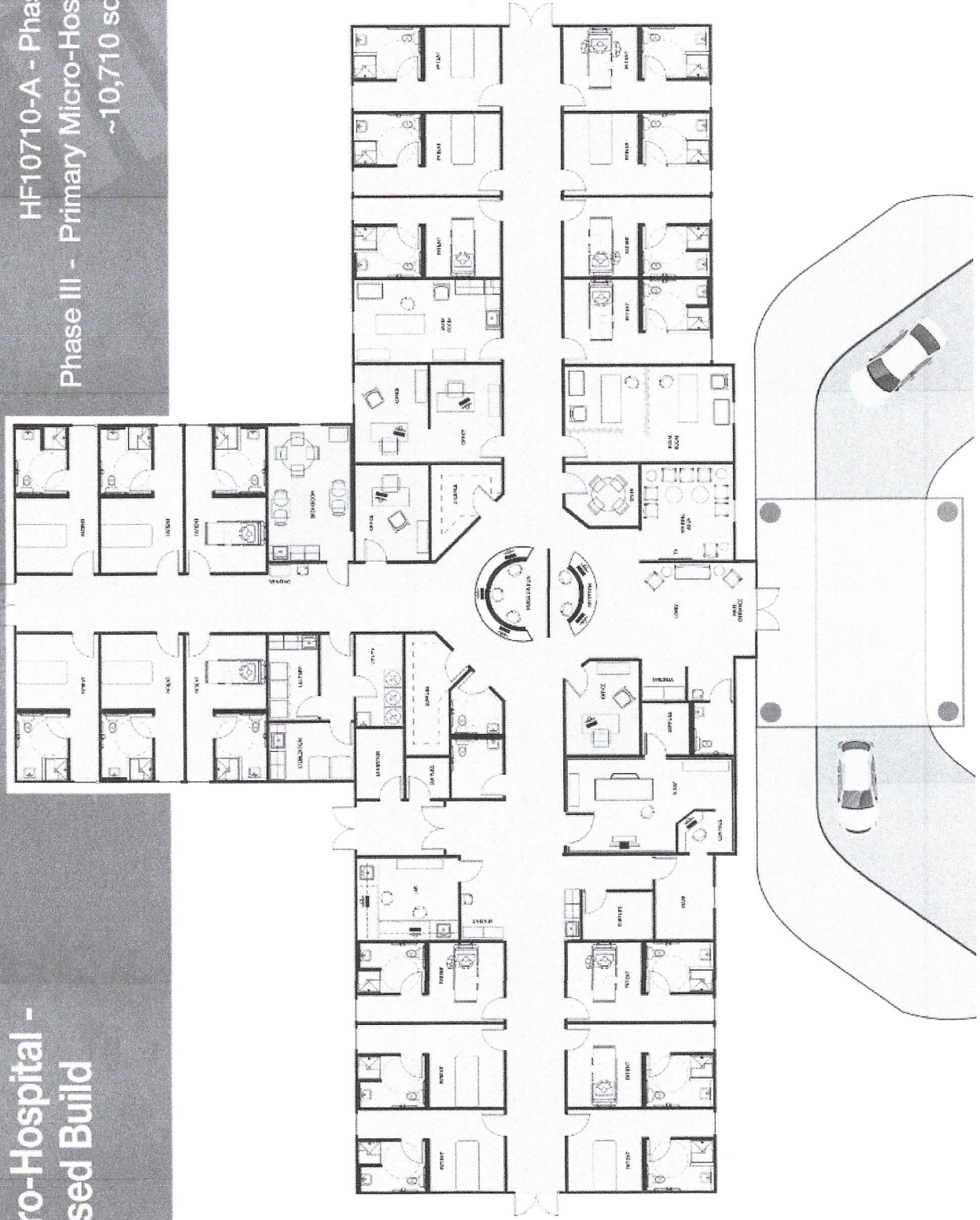
HF10710-A - Phased Build
Phase II - Micro-Hospital Unit
~8358 square feet



The estimated cost to construct Phases 1 and 2 together is approximately \$2,950,000.00 plus the property cost, cost of walkways and driveways, cost of parking areas, landscaping, signage, etc.

Micro-Hospital - Phased Build

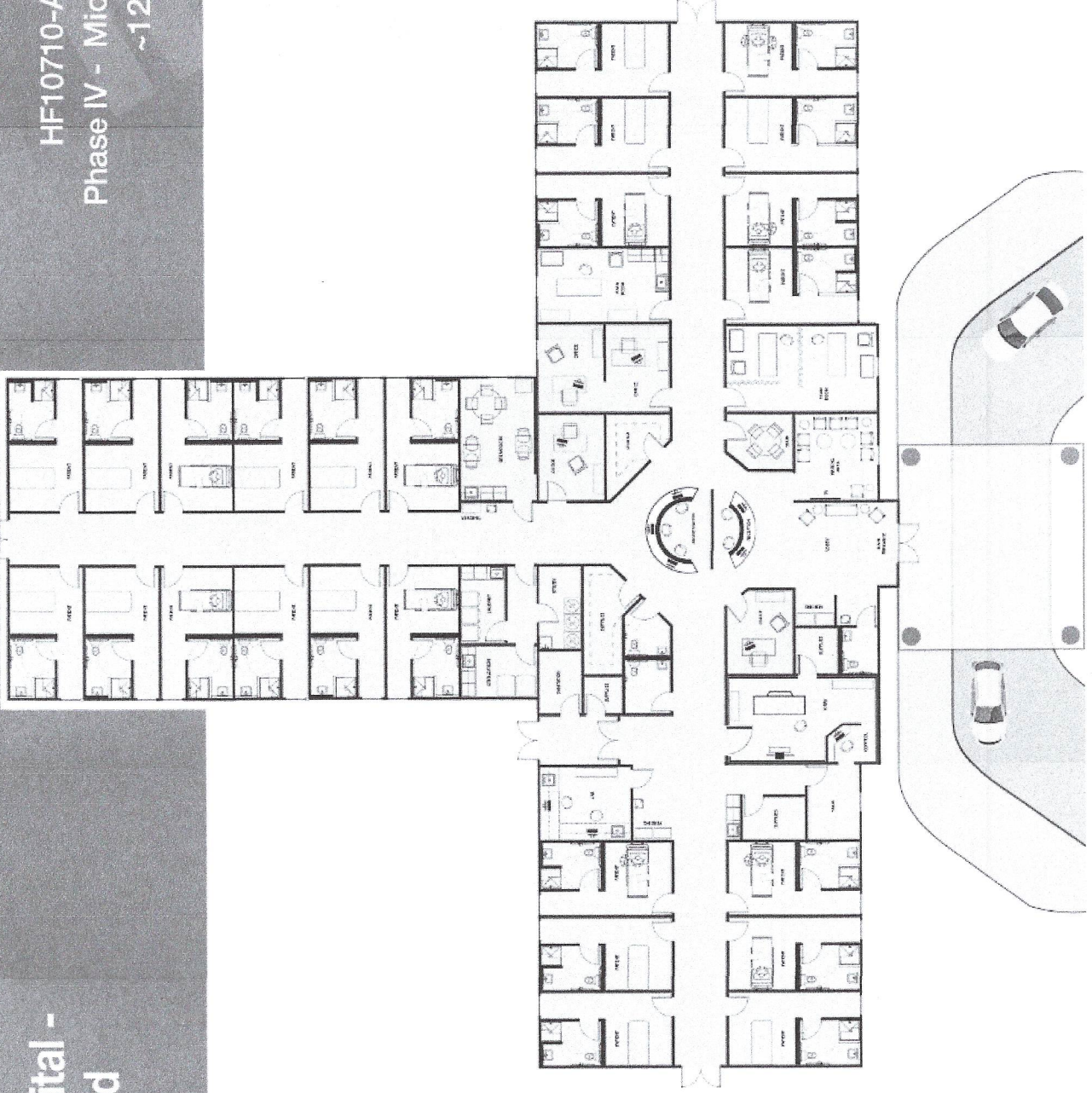
HF10710-A - Phased Build
Phase III - Primary Micro-Hospital Unit
~10,710 square feet



The estimated cost to construct Phases 1, 2 and 3 together is approximately \$3,800,000.00 plus the property cost, cost of walkways and driveways, cost of parking areas, landscaping, signage, etc.

Micro-Hospital - Phased Build

HF10710-A - Phased Build
Phase IV - Micro-Hospital Unit
~12,470 square feet



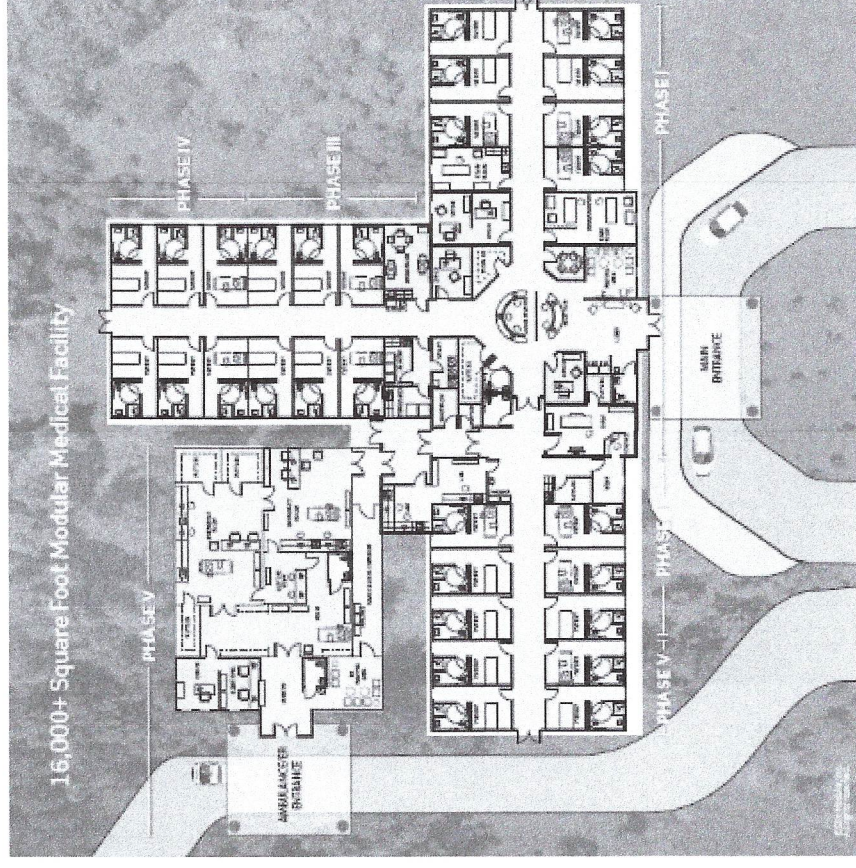
The estimated cost to construct Phases 1, 2, 3 and 4 together is approximately \$4,400,000.00 plus the property cost, cost of walkways and driveways, cost of parking areas, landscaping, signage, etc.

Micro-Hospital - Phased Build

HF10710-A - Phased Build
Phase V - Micro-Hospital Unit
~16,775 square feet



The estimated cost to construct Phases 1, 2, 3, 4 and 5 together is approximately \$5,880,000.00 plus the property cost, cost of walkways and driveways, cost of parking areas, landscaping, signage, etc.



The estimated cost to construct all 5 Phases at one time is approximately \$5,880,000.00 plus the Property Cost, cost of walkways and driveways, cost of parking areas, landscaping, signage, etc. However, if constructed by Phases at different times the cost would be considerably more.

Changing the Way We Do Healthcare in Hancock County

1. Hancock County Healthcare Center will stay open late hours 8-8pm
 2. Move EMT station to the new location.
 3. Hire new EMTs to stay on-site to service emergency patients and allow for 24-hour service on Friday - Sunday.
 4. Specialists rotating to allow in-town visits.
 5. Future expansion to offer Dentistry, Mental Health, and Optometry services.
 6. Partnering with Mercer University School of Medicine, Hancock County Hospital Authority, City of Sparta, , Community Health Care Systems, Local physicians and healthcare providers, Rehabilitation Centers (Nursing Homes), Hancock County Health Dept., Healthy Hancock Initiative Program, Hancock County Schools, Hancock Chamber of Commerce, Faith Leaders, and other community Leaders.
-