

A photograph of the Athelstone Recreation Reserve building. The building has a light-colored wood-grain facade. Large, white, three-dimensional letters spell out "ATHELSTONE RECREATION RESERVE" on the wall. To the left, there is a glass entrance. In the background, a green lawn and trees are visible through a black metal fence. A "NO SMOKING" sign is posted on the fence. The sky is overcast.

ATHELSTONE RECREATION RESERVE

CASE STUDY: ATHELSTONE RECREATION RESERVE

OVERVIEW

Athelstone Recreation Reserve is a sports facility that provides a range of recreational activities for the local community.

As part of a recent renovation project, the facility was upgraded with a synthetic soccer field.

Making the switch from grass to artificial turf is a big consideration, but one that has many environmental impacts.

The issue is, without natural grass allowing water to seep back into the ground water, what do you do with rain?!

That's exactly the issue Sports Design Group faced when we recently designed the Athelstone Reserve Synthetic Soccer Pitch.

THE PROJECT

- 1 x Synthetic Turf Soccer Field
- FIFA Certified
- Perimeter Fencing
- Backdrop Fence Behind Goals
- Drainage System within Pitch
- Outfall Drainage
- Pavement Makeup
- Linemarking
- Technical Zone

Value

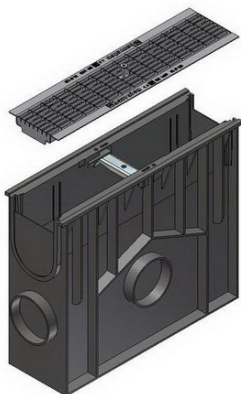
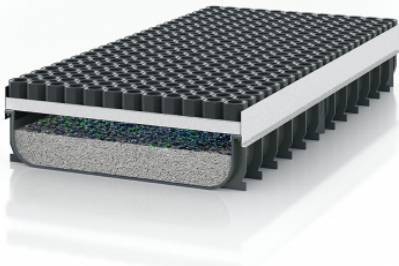
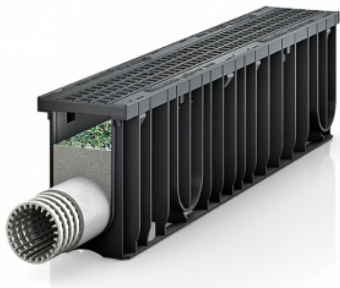
- Direct Cost: \$1.50 million

Design

Campbelltown City Council, specifically required the submission to include containment strategies or management plan to reduce micro-plastic waste from entering to waterways that may cause harm to living organisms in the aquatic and other based environment.

Sports Design Group specified the SPORTFIX PARTICAL GRATES to be used at all entrances to allow for the retention of microplastics from players' shoes when they exit the field.

Sports Design Group also specified the SPORTFIX CHANNELS to be installed beneath the synthetic grass surface around the perimeter of the field to provide efficient drainage of the field of play.



Results

The installation of Hauraton SPORTFIX PRO 200 Channel with Fibretec Grating has resulted in efficient drainage of the field of play, providing a safe and high-quality playing surface for the local community.

Additionally, the incorporation of the Hauraton SPORTFIX Shoe Grate/Particle/Sand Trap has allowed for the retention of microplastics from players' shoes when they exit the field, promoting a sustainable and environmentally friendly approach to sports facility management.

Conclusion

The Athelstone Recreation Reserve renovation showcases sustainable materials in sports facility design, promoting eco-friendly practices while ensuring safety and quality.

Hauraton SPORTFIX PRO 200 CHANNEL with Fibretec Grating provides efficient drainage and microplastic retention.

Website: www.sportsdesigngroup.com.au

