

1975

DIRECTORY AND SCHEDULE

EASTERN FOOTBALL LEAGUE



PAUL A. BARTLETT
President
6 Pleasant Street
Malden, Massachusetts
322-9091



AL CAMOBASSO
12 Third Street
Medford, Mass. 02155
396-1727
Vice President



EDWARD ROSOFF
Secretary
5 Acorn Drive
Randolph, Mass.
963-0184

2-0
off.
200
web low
10-0
↓



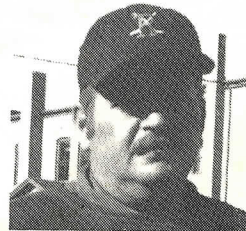
LEE CHISHOLM
Treasurer
417 Andover Street
No. Wilmington, Ma. 01881
658-3667

ATT. ATT. GB
21-0



FRAN DEARY
Commissioner
32 Main Street
Webster, Mass. 01570
943-5550

PLY HART.
34-0



GEORGE E. MURPHY
Comm. of Officials
55 Brookside Ave.
Winchester, Mass. 01890
729-4840



LOWELL COLTS
 P.O. Box 482, Lowell, Mass.
 658-3667

Pres.: Paul Bartlett, 322-9091
 Gen. Manager: Lee Chisholm
 Coach: John Pereaault, 459-6285
 Asst. Coach: Jerry Rideout
 Asst. Coach: Kenny Eldridge
 Games Played Friday Nites
 Cawley Memorial Stadium
 Trainer: Mickey O'Brion
 Colors: Maroon & White

TRI-ATTLEBORO KINGS
 P.O. Box 67, Somerset, Mass. 02726

Pres.: Joseph E. Fernandes
 General Manager: Rick Buffington
 679-8472
 Head Coach: Bob Teahaw — 447-4188
 Secretary: James H. Fagan Esq. 824-7018
 PR & Business: Steve Jette — 222-6989
 Manager: Dick Erickson
 Asst. Mgr. Preston Kealer
 Games Played at Community Field
 North Attleboro
 Friday Nights 8:00 p.m.
 Colors: Red, White & Blue



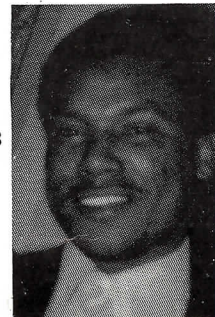
RANDOLPH OILERS
 P.O. Box 171, Randolph, Mass.

Pres. & Gen.Mgr.: Ed Ripp
 963-0990 Home — 963-9824 Business
 Treasurer: Pete O'Kane
 Secretary: Ed Rosoff 963-0184
 Business Manager: Dick Coburn
 Asst. Mngr: Barry LaMarre
 Public Relations: Mark Indech
 Player Agent: Tom Comerford
 Equip. Manager: Bob McSweeney
 Coach: Al Scibetta
 Trainer: Ed Nye
 Colors: Blue, White & Gold
 Games played at High School Field



HARTFORD COUNTY BRUINS
 P.O. Box 545, Bloomfield, Ct. 06002

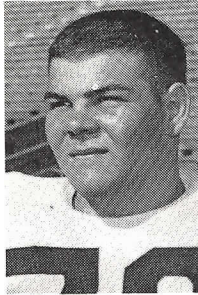
Board Chairman: Chuck Lloyd
 President: Ed Harden 203-522-3762
 Vice President: Douglas Savelli
 Treasurer: Raymond McFarland 203-242-8608
 Rec. Secretary: Gerald Reedy
 Secretary: Frank Hills
 Head Coach: James Moss 203-568-5242
 Gnl. Mgr. & Pub. Rel. Kenny Leamond
 Colors: Blue/White/Gold
 Team Illustrator: Brad Jackson
 Sponsor: Bloomfield Athletic Soc. Club
 Games Played at Dillon Stadium, Hartford



PLYMOUTH ROCKS

P.O. Box 5, White Horse Beach, Mass.

Pres. & Gen. Mgr.: Al Giovannella, Jr.
V.P.: Clyde Balboni
Secretary: Dana Banker
Treas: Marvin H. Margolies
Coach: Paul Urban
Equip, Mgr.: Chuck Martin
Team Colors: Red, White & Blue
Playing Field, Plymouth Carver Regional
High School
Tel. No.: Al Giovannella — Home 224-3647
Office 224-8554 — (24 hr. Answering
Service)



GREATER BOSTON RAIDERS

President: Bill Mattuchio — 396-1727
Vice-Pres.: Al Campobasso
Treas: Jo Mattuchio
Sec.: Arlene Campobasso
Gen. Mgr.: Dennis Connors
Head Coach: Buddy Cataldo — 438-6448
Asst. Coach: Jim Dodge

MIDDLEBORO COBRAS

Pres.: Vincent Sykes — 947-1396
Vice President: Manuel Barboza
Sec/Treas.: Sharon Sykes
Gen.Mgr. Wayne Lee, 2 Clifford St.
Middleboro — 947-6342
Coaches: Ray MacDonald, Vincent Sykes
Games Played: Friday, Sat. Nights
Team Colors: Silver & Black
Home Field: Dattis Field



E.F.L. FINAL STANDINGS 1974

	Won	Lost	Points For	Points Against
Middleboro	10	2	265	90
Lowell	10	2	175	93
Attleboro	9	3	265	136
Webster	7	5	266	136
Randolph	3	9	104	218
Hartford	2	10	53	241
Boston	1	11	95	306

Tie Playoff (Middleboro 13 — Lowell 0)

**EASTERN FOOTBALL LEAGUE
1975 SCHEDULE**

AUGUST

Friday	1	HARTFORD at WEBSTER
Friday	1	PLYMOUTH at MIDDLEBORO
Friday	1	ATTLEBORO at RANDOLPH
Sunday	3	LOWELL at BOSTON
Friday	8	LOWELL at WEBSTER
Friday	8	MIDDLEBORO at RANDOLPH
Saturday	9	PLYMOUTH at HARTFORD
Sunday	10	ATTLEBORO at BOSTON
Friday	15	ATTLEBORO at LOWELL
Friday	15	WEBSTER at PLYMOUTH
Friday	15	BOSTON at MIDDLEBORO
Friday	15	HARTFORD at RANDOLPH
Friday	22	PLYMOUTH at LOWELL
Friday	22	ATTLEBORO at MIDDLEBORO
Friday	22	RANDOLPH at WEBSTER
Sunday	24	HARTFORD at BOSTON
Friday	29	MIDDLEBORO at LOWELL
Friday	29	RANDOLPH at PLYMOUTH
Saturday	30	ATTLEBORO at HARTFORD
Sunday	31	WEBSTER at BOSTON

SEPTEMBER

Friday	5	WEBSTER at ATTLEBORO
Friday	5	BOSTON at PLYMOUTH
Friday	5	HARTFORD at MIDDLEBORO
Sunday	7	LOWELL at RANDOLPH
Friday	12	BOSTON at RANDOLPH
Friday	12	ATTLEBORO at PLYMOUTH
Friday	12	WEBSTER at MIDDLEBORO
Saturday	13	LOWELL at HARTFORD
Friday	19	BOSTON at LOWELL
Friday	19	RANDOLPH at ATTLEBORO
Friday	19	MIDDLEBORO at PLYMOUTH
Saturday	20	WEBSTER at HARTFORD
Friday	26	WEBSTER at LOWELL
Friday	26	RANDOLPH at MIDDLEBORO
Friday	26	BOSTON at ATTLEBORO
Friday	26	HARTFORD at PLYMOUTH

OCTOBER

Friday	3	LOWELL at ATTLEBORO
Friday	3	PLYMOUTH at WEBSTER
Saturday	4	RANDOLPH at HARTFORD
Sunday	5	MIDDLEBORO at BOSTON
Friday	10	LOWELL at PLYMOUTH
Friday	10	MIDDLEBORO at ATTLEBORO
Friday	10	WEBSTER at RANDOLPH
Sunday	11	BOSTON at HARTFORD
Friday	17	LOWELL at MIDDLEBORO
Friday	17	PLYMOUTH at RANDOLPH
Friday	17	HARTFORD at ATTLEBORO
Friday	17	BOSTON at WEBSTER
Friday	24	RANDOLPH at LOWELL
Friday	24	ATTLEBORO at WEBSTER
Saturday	25	MIDDLEBORO at HARTFORD
Sunday	26	PLYMOUTH at BOSTON
Friday	31	HARTFORD at LOWELL
Friday	31	PLYMOUTH at ATTLEBORO
Friday	31	MIDDLEBORO at WEBSTER

NOVEMBER

Sunday	2	RANDOLPH at BOSTON
--------	---	--------------------

Commissioner of Officials
GEORGE MURPHY
55 Brookside Avenue, Winchester

BEST
YEAR
LOSS
2.30

7-2

PLYMOUTH