

699 3472
1977

DIRECTORY AND SCHEDULE

**EASTERN FOOTBALL
LEAGUE**



PAUL A. BARTLETT
President
6 Pleasant Street
Malden, Massachusetts
322-9091



WAYNE LEE
Vice President
2 Clifford Street
Middleboro, Mass.
947-6342



PETER O'KANE
Secretary
Howe Circle
Randolph, Mass. 02368
963-5231



LEE CHISHOLM
Treasurer
417 Andover Street
No. Wilmington, Ma. 01881
658-3667



GEORGE E. MURPHY
Commissioner
55 Brookside Avenue
Winchester, Mass. 01890
Office 323-5250-51-52
Home 729-4840



LISA SKOP
Public Relations
466 Commonwealth Ave.
Apt. 213, Boston, Ma. 02215
266-8223

MIDDLEBORO COBRAS

2 Clifford Street, Middleboro, Mass. 02346

President: Vincent J. Sykes 947-1396
Gen. Mgr: Wayne D. Lee—Home 947-6342
Office: 295-9990
Secretary/Treasurer: Sharon Sykes
Coaches: V.J. Sykes, Bob Grieson
Games Played: Friday Nights, 8:30
Saturday Nights 8:00
Team Colors: Silver and Black
Home Field: Battis Field, Jackson St.



MANCHESTER RIFLEMAN Connecticut

President: Jim Moss, 243-2438
Vice President: John Hooker
Sec./Treas: Irene Balesano
Gen. Mgr.:
Head Coach: Jim Moss
Asst. Coach: Steve Shia, Dave Maynard,
Jackie Jenkins
Player Rep: Ed Shia
Colors: Maroon and White
Home Field: Mt. Nebo Field, Manchester,
Conn.
Sponsor: Continental Sports Assoc., Inc.



PLYMOUTH ROCKS

P.O.Box 5, White Horse Beach, MA 02381

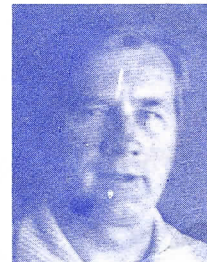
Pres.&Gen. Mgr.: Al Giovannella, Jr.
Vice President: Clyde Balboni
Secretary: Sue Giovannella
Treasurer: Marvin H. Margolies
Head Coach: Rick Cash
Asst. Coaches: Defensive Coordinator-Jack
Collins — Offensive Coord.-Mike
Sheehan, Lou Dimestico
Equipment Mgr.: Chuck Martin
Team Colors: Red, White and Blue
Playing Field, Plymouth Carver Regional
High School
Tel. No.: Al Giovannella 224-8554 (24 hr.
answering service.



OLD SAYBROOK TIDES

203 Main St., Old Saybrook, Conn. 06475

General Manager: K.B. Snow, Jr. 388-2106
Vice President: Don Evans 873-8546
Secretary/Treasurer Stuart Holly 388-2222
Player Rep: Bruce Comstock 767-0280
Coach: K.B. Snow 203-388-9990
Asst. Coach: Chas. Henderson
Trainer: Mark Saidman
Equipment Mgr: Ken Wolf
Public Relations: Larry Belcamino
Team Colors: Black and White
Games Played Sunday at Senior High School
Field



RANDOLPH OILERS

P.O.Box 171, Randolph, Mass. 02368

President: Ed Ripp 963-0990
Vice President Ed Rosoff 963-0184
General Mgr./Treasurer: Peter O'Kane
986-4447 Business — 963-5231 Home
Secretary: Marge O'Kane
Head Coach: Al Scibetta 472-3279
Asst. Coaches: Carl Johnson, John Murphy
Public Relations Larry Rosoff
Games Played at Randolph High School Fld.
Colors: Blue, White and Gold



HYDE PARK COWBOYS

President: Rich Slippin 825-3446
Treasurer: Rick McMormick
Secretary: Bob McIntyre
Head Coach: Jim McIntyre 361-5826
Asst. Coach: Bob DeVoe, Bill Hickey
Clyde Dempsey
Games Played: Friday Nights 8:30
West Roxbury High
Colors: Royal, White, Silver
Trainer: Dennis Brogna
General Mgr: Larry DeVoe 287-0568
Owner: Billy Mouredian



RHODE ISLAND KINGS

380 So. Worcester St., Norton, MA 02766

Chairman: Joseph E. Fernandes 285-7771
President: Frank Gillan
Vice President: Anthony Lawrence
Board of Director: Hayward Ross
General Mgr: Steve Jette 617-285-7771
Head Coach: Rick Buffington 679-8457
Bus. Mgr. Rudy Tavares 401-421-3708
Home Fied: McCoy Stadium, Pawt. R.I.
Team Colors: Red, White, & Blue



MARLBORO SHAMROCKS

President: Carol Connor 481-4505
Vice President: Dennis Kelly 481-1545
General Manager: William Nelson 485-1623
Secretary: Rene Hanson
Treasurer: James Bateman
Head Coach: James Attaway
Trainers: Geo. Chan, Steve Stupeck
Equipment Mgrs: Don Blanchette
Adrian Temple
Home Field: Kelleher Field, Marlboro
Colors: Kelly Green and White



1976

FINAL LEAGUE STANDINGS

| | Won | Lost | Points For | Points Against |
|-------------------------|-----|------|---------------|-------------------|
| Middleboro Cobras*** | 13 | 1 | 312 | 82 |
| Plymouth Rocks | 12 | 2 | 223 | 57 |
| Randolph Oilers | 10 | 4 | 186 | 82 |
| Rhode Island Kings | 7 | 7 | 154 | 144 |
| Marlboro Shamrocks | 6 | 8 | 122 | 154 |
| Merrimack Valley Colts | 4 | 10 | 87 | 246 |
| Manchester Riflemen | 2 | 12 | 33 | 279 |
| Greater Boston Raiders* | 2 | 12 | 46 | 113 |

*** Regular season champs and winner of 4 way playoff.

* Withdrew from League.

EASTERN FOOTBALL LEAGUE 1977 SCHEDULE

White Jersey Signifies Visiting Team — * Indicates Day Games

JULY

| | | |
|----------|----|--------------------------|
| Friday | 29 | MARLBORO at HYDE PARK |
| Friday | 29 | RHODE ISLAND at RANDOLPH |
| Saturday | 30 | MANCHESTER at PLYMOUTH |
| Sunday | 31 | MIDDLEBORO at SAYBROOK |

AUGUST

| | | |
|----------|----|----------------------------|
| Friday | 5 | PLYMOUTH at MIDDLEBORO |
| Saturday | 6 | *RANDOLPH at MANCHESTER |
| Saturday | 6 | RHODE ISLAND at HYDE PARK |
| Sunday | 7 | MARLBORO at SAYBROOK |
| Friday | 12 | HYDE PARK at RANDOLPH |
| Friday | 12 | PLYMOUTH at MARLBORO |
| Saturday | 13 | MANCHESTER at MIDDLEBORO |
| Saturday | 13 | SAYBROOK at RHODE ISLAND |
| Friday | 19 | MIDDLEBORO at MARLBORO |
| Friday | 19 | RHODE ISLAND at PLYMOUTH |
| Saturday | 20 | MANCHESTER at HYDE PARK |
| Sunday | 21 | RANDOLPH at SAYBROOK |
| Friday | 26 | RHODE ISLAND at MIDDLEBORO |
| Friday | 26 | RANDOLPH at PLYMOUTH |
| Saturday | 27 | MANCHESTER at MARLBORO |
| Sunday | 28 | HYDE PARK at SAYBROOK |

SEPTEMBER

| | | |
|----------|----|----------------------------|
| Friday | 2 | HYDE PARK at PLYMOUTH |
| Sunday | 4 | MIDDLEBORO at RANDOLPH |
| Sunday | 4 | RHODE ISLAND at MARLBORO |
| Sunday | 4 | MANCHESTER at SAYBROOK |
| Friday | 9 | MIDDLEBORO at HYDE PARK |
| Saturday | 10 | RHODE ISLAND at MANCHESTER |
| Saturday | 10 | SAYBROOK at PLYMOUTH |
| Saturday | 10 | RANDOLPH at MARLBORO |
| Friday | 16 | RANDOLPH at RHODE ISLAND |
| Saturday | 17 | PLYMOUTH at MANCHESTER |
| Saturday | 17 | SAYBROOK at MIDDLEBORO |
| Saturday | 17 | HYDE PARK at MARLBORO |
| Friday | 23 | MIDDLEBORO at PLYMOUTH |
| Friday | 23 | HYDE PARK at RHODE ISLAND |
| Saturday | 24 | RANDOLPH at MANCHESTER |
| Saturday | 24 | SAYBROOK at MARLBORO |
| Friday | 30 | RANDOLPH at HYDE PARK |
| Friday | 30 | MARLBORO at PLYMOUTH |
| Saturday | 1 | MIDDLEBORO at MANCHESTER |
| Sunday | 2 | RHODE ISLAND at SAYBROOK |

OCTOBER

| | | |
|----------|----|----------------------------|
| Friday | 7 | MARLBORO at MIDDLEBORO |
| Friday | 7 | RHODE ISLAND at PLYMOUTH |
| Saturday | 8 | HYDE PARK at MANCHESTER |
| Sunday | 9 | SAYBROOK at RANDOLPH |
| Friday | 14 | MIDDLEBORO at RHODE ISLAND |
| Saturday | 15 | MARLBORO at MANCHESTER |
| Sunday | 16 | PLYMOUTH at RANDOLPH |
| Sunday | 16 | SAYBROOK at HYDE PARK |
| Friday | 21 | MARLBORO at RHODE ISLAND |
| Friday | 21 | PLYMOUTH at HYDE PARK |
| Friday | 21 | MIDDLEBORO at RANDOLPH |
| Saturday | 22 | SAYBROOK at MANCHESTER |
| Friday | | HYDE PARK at MIDDLEBORO |
| Saturday | | RHODE ISLAND at MANCHESTER |
| Sunday | | PLYMOUTH at SAYBROOK |
| Sunday | | MARLBORO at RANDOLPH |

All Sunday Games are 2 o'clock Starting Time

Commissioner of Officials

GEORGE MURPHY

55 Brookside Avenue, Winchester

Home: 729-4840 — Business: 522-1001 or 522-8027