

THE Rosedale ASSOCIATION INC



Newsletter Issue 135 March 2023



NOTICE OF ANNUAL GENERAL MEETING: SATURDAY 8 APRIL 2023

Notice is hereby given of the Annual General Meeting of the Rosedale Association, to be held on Saturday 8 April at 11:00 am at the end of Knowlman Road.

AGENDA AGM 8 APRIL

1. Apologies
2. President's Update
3. Treasurer's Report
4. Membership Update
5. Fire Report
6. Beach Safety
7. Environment Projects
8. Election of Committee Members
9. Other Business

LETTER FROM THE EDITOR MARGOT MARSHALL

It's fantastic to see how green Rosedale is – La Nina rains may have caused erosion and downed trees, but also surprising new native vegetation and wildlife. I am amazed at how many small birds have discovered my garden and the lizards are everywhere.

With so much redevelopment, David Boardman writes (page 3), it's vital to think about good landscaping to protect Rosedale's environmental ambience. If you have a new neighbour, point them to the materials on our website under About Us. Useful guides include the [Rosedale Statement of Place](#) the [Botanic Gardens list of fire resistant plants](#) they grow and the bushfire planting documents [here](#) and [here](#). We are zoned C 4, environmental living (formerly E4) – it's a good idea if you're building or renovating to have a copy of

the [landscaping rules](#).

As usual we've had several rescues from rips over summer (see the frightening NSW drowning stats on page 3). Just a few weeks ago a family tossed the angel ring from the southern cliff to rescue a swimmer in trouble. Good to see them being used - we've lodged an application for another one to be installed between Rosedale and Boatshed beaches.

As we head towards the AGM, please think about nominating for the committee. We need new blood!

Thanks to everyone who contributed to this newsletter, especially Katy Hamilton and Di Clark, and to Kit Tischler and Bardi Carter for organizing the Sausage Sizzle.

See you at the AGM!

EASTER WEEKEND ACTIVITIES

EASTER SATURDAY Weedathon, 2:30 pm

Meet in the car park – BYO gloves and basic gardening tools for weeding in the dunes.

Annual Sausage Sizzle, 5:00 pm

Where: The end of Knowlman Rd

We supply the food – just bring your own drinks and chair, kids and friends!

EASTER SUNDAY Defibrillator and Surf Tube Demo, 10.30 am

Where: On the beach in front of the cabins. All ages welcome.

ROSEDALE ASSOCIATION –
CURRENT COMMITTEE

committee@roosedale.org.au

President: David Boardman

Secretary: Vicki Smith

Treasurer: Melissa Gribble

Members

Tim Brown

Sally Edsall

Rory Eames

Margot Marshall

Annie Shillington

Michael Skipper

Peter Ward

Please pass this newsletter on to your friends and neighbours – especially new post-fire residents! We'd be delighted to have more members. Apply for new membership on our website [here](#) and pay by credit card. It's still only \$10 a year.

Existing members, your fees are due now. Pay online [here](#). If you're not sure whether your subscription is up to date, please email peteward@homemail.com.au.

JOIN OUR COMMITTEE!

Please think about joining the committee – we need fresh blood and some of us would welcome a break! Form is [here](#). Please send your application form to executive@roosedale.org.au by Thursday 6 April – any questions, contact us.

TREASURER'S REPORT

ROSEDALE ASSOCIATION INCOME AND EXPENDITURE STATEMENT 2022

INCOME

Members Subscriptions	\$ 4,240.00
Interest from Term Deposit	\$ 29.05
- Rosedale Environment Fund	\$ 1,950.00
TOTAL INCOME	\$ 6,219.05

EXPENDITURE

Stairs	\$ 6,557.00
Sand Dune Assessment – Uni of Newcastle	\$ 4,235.00
Bushfire Memorial Sign	\$ 1,897.50
Fire Trailer (GoFundMe)	\$ 1,860.00
Fire Expenses (GoFundMe)	\$ 1,656.85
Website	\$ 454.26
Sausage Sizzle	\$ 415.00
Insurance - Public Liability & Events	\$ 188.72
Cyber Security Protection	\$ 164.95
Australia Post letterbox	\$ 144.00
Boatshed Cleanup	\$ 124.50
Track Maintenance	\$ 100.00
Ezidebit Fees	\$ 94.06
Fair Trading	\$ 48.21
Jotform	\$ 53.17
	\$ 17,993.22

DONATIONS

Rural Fire Service	\$ 500.00
Batemans Bay Surf Lifesaving Club	\$ 500.00
	\$ 1,000.00

TOTAL EXPENDITURE \$ **18,993.22**

NET INCOME \$ **12,774.17**

Cash at Bank

Term Deposit

TOTAL ASSETS \$ **67,310.82**





Three years after the fires, it's great to see many homes rebuilt and more underway. The dawn chorus from the birds is also a welcome return - so much so that the complete silence after the fires is a distant memory. It reminds us of how Rosedale used to be - when the natural environment dominated the built environment.

Once homes have been re-established, it's time to turn to landscaping. Landscaping is critical to maintaining the character of the Rosedale hamlet. It creates habitat, preserves the natural environment, maintains soil and helps control erosion. Well planned landscaping also protects our homes and adds value.

As I walk around Rosedale, I see some new homes are re-establishing wonderful gardens and I encourage everyone to think about, and appreciate, how our gardens reflect the character of the hamlet.

The re-vegetation of the sand dunes has been spectacular. They look great, provide protection against erosion and sea inundation, and provide valuable habitat. There's a wonderful group

of volunteers doing amazing work - planting, and weeding out unwanted invasive plants and rabbits. I encourage you to come along to a weeding session - they only go for one hour and more helpers are always welcome.

West Rosedale is forging ahead. The roundabout is in, the cleared areas are slowly being revegetated and improved silt mitigation is in place, which is having a positive effect on Saltwater Creek. House construction is expected to start in the second half of 2023.

As we face the wide impacts of development, we're lucky to have strong associations in our neighbouring communities. In Broulee a Development Application has been lodged for a four storey unit development, exceeding the maximum building height. Approval of a building height variation would set a precedent. The concerned community is united in its fight to protect Broulee's village character and local environment. It's a reminder that our coastal villages are precious and we need to work together at the community level to protect them for future generations.



DEADLIEST SUMMER EVER ON NSW BEACHES

Frightening statistics on beach drownings are a worrying warning for Rosedale swimmers. Fifty-four people drowned on the Australian coastline this summer, twenty-eight of them in NSW - and all where there were no lifesavers on patrol (that's us!)

Moreover:

- rip currents were the cause of 43 per cent of beach drownings - Rosedale's beaches have dangerous rips.
- nine per cent of people drowned were trying to rescue someone else.

Remember:

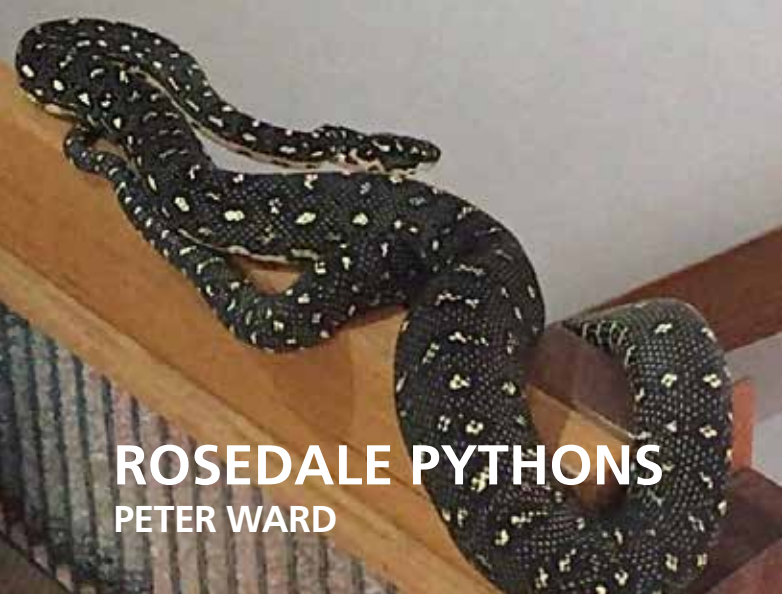
If you get caught in a rip, don't try to swim against or across it - this will only exhaust you. The best thing that you can do is relax, float, signal and call for help - greatly increasing the chances of a better outcome for everyone.

If you see someone in trouble, phone 000 and ask for 'Police' - it's the fastest way for a coordinated emergency rescue. **Do not enter the water without a flotation device when you see someone in trouble, even if you're a skilled swimmer.** Throw a



flotation device such as an angel ring, surfboard, boogie board or rescue tube into the rip water. The rip will carry these devices towards the swimmer.

Many people die from heart attack after being caught in a rip. Learn how to use the defibrillator (come to Tim Brown's demo on Easter Sunday). The defibrillator and a rescue tube are located on the block wall between 13 and 17 Knowlman Road, angel rings on the cliffs at the southern end of Rosedale beach and the northern end of Boatshed Beach.



ROSEDALE PYTHONS

PETER WARD



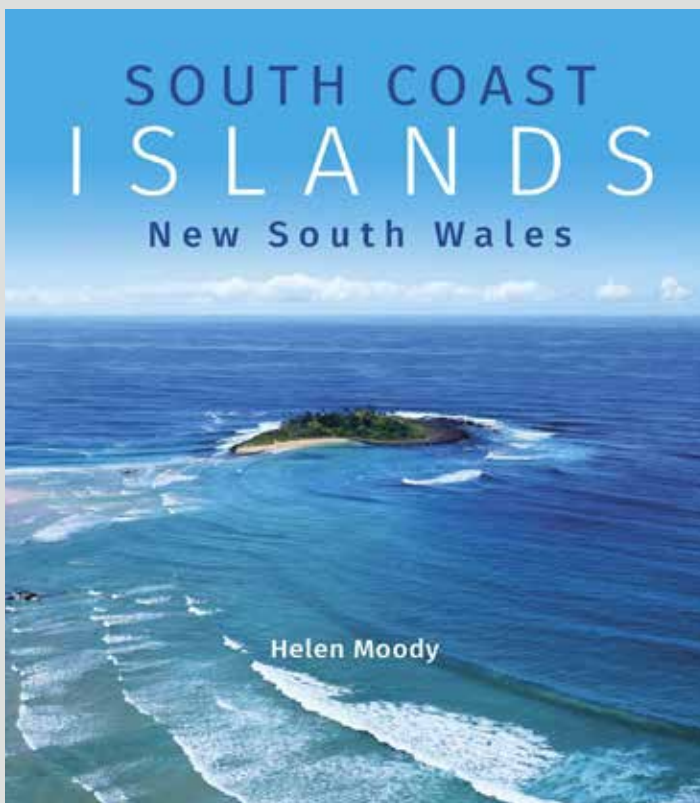
In early March we had reports of a very large diamond python in Rosedale. Growing to three metres and 25 kg, these large snakes can be a surprising – even frightening – home visitor. They're sometimes found in roof cavities or on verandas - a diamond python inside Bill Legge and Vicki Smith's house remained on the stair rail for some time while Bill went back and forth without noticing it! However, there's no reason to remove them as they don't cause any damage and don't stay in one place for long.

Fortunately, diamond pythons are not venomous. They're usually placid but can inflict a painful bite if harassed. An ambush predator, diamond pythons feed on animals such as lizards, small mammals and birds, suffocating their prey and swallowing it whole. They do a great job removing mice and rats!

Diamond pythons are dark-olive or black with cream or yellow spots in clusters forming a diamond shape. Their underside is white or cream. They're tree dwellers, so difficult to see especially when resting up high (they're rarely active during the day). They hibernate in winter, sometimes on our rocky headlands. Rosedale residents occasionally report tangled groups of diamond pythons mating during spring.

Although not considered endangered, diamond pythons are under pressure from habitat destruction. It is illegal to capture, hurt or kill them. Please take care when driving, and ensure that cats and dogs don't roam and attack pythons. Contact WIRES or Council if you are concerned about a diamond python or other native animals.

RESERVE YOUR COPY



Author Helen Moody has written the first ever book on the 61 largely unknown islands of the NSW south coast – including Jimmies.

"It's a book for anyone who loves nature and discovering wild places" Helen says.

"Nearly all the islands are small and uninhabited, yet each has something special about it. Several are wildlife havens with significant biodiversity values. Some have ancient and ongoing spiritual significance to First Nations people. Some have fascinating connections to early explorers and settlers."

With over 200 photographs, maps and descriptions of how to visit every island, the book will be self-published in midyear. Price is \$50. Donations and grants have covered most of the production costs and all profits will go to environmental projects. Now they need to decide the print run – so if you want a copy, send your details, noting 'ROSEDALE' as well, to: southcoastislandsbook@gmail.com

With another La Nina wet season, we've been keeping our Rosedale Rovers bushfire assets in working order. They're strategically placed around North and South Rosedale.

We've also added extra more professional signage to the emergency water shuttles and mobile fire units and soon we'll be painting the shipping container green to blend into the bushland – a boon for those in the Tallwood and Tranquil Bay streets.

Over the cooler months, we'll be holding several real fire training sessions - there are a few vegetation piles that need attention and it's a good opportunity for education. Please let me know if you'd like to take part.

The Bureau of Meteorology say the current run of La Nina seasons is likely to be followed by neutral conditions and a run of El Nino seasons and heightened fire danger - the RFS also warn of more challenging seasons in coming years. Recent history proves there's no room for complacency so it remains a high priority to maintain Asset Protection Zones, clean gutters and update survival plans.



IMPORTANT NUMBERS

EMERGENCIES: 000

ABC LOCAL RADIO: 103.5 FM

WIRES (animal rescue) 13000 WIRES or 1300 094737

ESSENTIAL ENERGY (poles and wires) 13 20 80

FISHERIES WATCH HOTLINE (poachers) 1800 043 536

SEWERAGE (Council): 02 4474 7347

NSW MENTAL HEALTH LINE: 1800 011 511

STATIC WATER SUPPLY (SWS)



Do you have a water tank or (less likely) a swimming pool? We want to identify these private water sources so that firefighters can quickly access them to fight a fire.

We've been trying to get this information for our community for many years. Now's a good time to update our records, particularly as many new homes are being built, some extended, and provision of water storage is part of the DA process.

It's in our own interests to have this data on hand locally – it's a great addition to the water shuttles.

SWS signs are available to help firefighters access vital water supplies to defend your property. Contact me at committee@rosedale.org.au and I'll ensure a SWS sign is issued for you.

SALTWATER CREEK MONITORING UPDATE RORY EAMES

Our manual and digital water monitoring kits are on the way – they're made to order for specific measurement requirements and they're taking longer to procure than we'd hoped. They'll provide a reliable method of measuring key water quality indicators such as available phosphate, dissolved oxygen, pH, electrical conductivity, and turbidity.

In the meantime we're continuing visual observations and sampling. See the images of samples from February (pre-rain) and March (just post-rain).

It's interesting to note the significant temperature change. February's pre-rain sample was quite warm at approximately 18 degrees, and post rain quite a bit cooler at 11 degrees.

This'll be an interesting measurement to build up over time, to account for seasonal variation. But it also indicates possible impacts of rain and stormwater runoff. As hard, sealed surfaces increase around Rosedale, this may be an important factor to monitor.



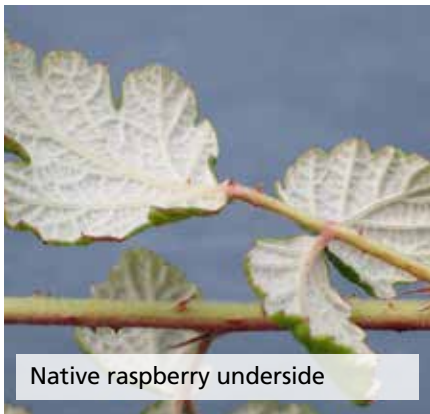


Native raspberry



Invasive blackberry

While you're out in the garden or bush you may come across a plant that looks a bit weedy but is in fact a local. A few people have asked me about the difference between our local raspberry and the common invasive blackberry. Basically you can tell the difference if you look closely at the leaves. The local raspberry (*Rubus parvifolius*) has a much rougher leaf to touch, looks crinklier and has more deeply indented veins. It also has a more jagged leaf than the common blackberry's more evenly serrated leaf edge. The native raspberry's flowers are pink and the blackberry's white – and the blackberry is a much more vigorous grower. [This YouTube video](#) explains it much better than I can!



Native raspberry underside



Tradescantia on left, Commelina on right

Another look alike is the native *Commelina cyanea* or Scurvy Weed. This prostrate perennial herb attracts pollinators, but resembles the weedy plant we call Trad, Wandering Spiderwort or Wandering Jew (*Tradescantia fluminensis*). If you're a gardener, you may find both plants get away from you, but if you're weeding in the bush only Trad is out of place. The leaves of *Commelina cyanea* are narrower, and the flowers bright blue compared with the Trad's white ones. Both plants prefer a moist site with part shade – the native *Commelina* may grow in full sun but will die back to its rootstock if it's too hot and dry. The non-native Trad smothers native plants and spreads very easily from pieces - remove it by hand or spray it.



Commelina flower



PROTECTING OUR SAND DUNES

KATY HAMILTON

I'm thrilled at how fantastic our dunes are looking. Thanks to everyone who's helping – it's an ongoing labour of love, but a lot of fun. Di Clark coordinates our regular weeding group on the second Saturday of every month at 4.00 pm. Come and join us!

Lots of wild weather has meant we're continuing to battle erosion.

A few pieces of strategically placed driftwood to deter foot traffic has resulted in plants flourishing. Thank you to all who are walking the few extra steps and helping the erosion problem. We know this dune area is very vulnerable to the big storm events and needs a multilayered approach to manage it – we're in constant consultation with council about future works.



RABBITS...AND RATS

These invasives are creating more havoc than I expected.

Upturning a few unused boats revealed not only rabbit warrens and rats' nests but plastic and polystyrene rubbish that will end up in the ocean. We're looking for creative ways to store the Rosedale boats to eliminate the perfect hiding spot for rabbits, rats and rubbish and allow the dune plants to flourish. Any ideas, please contact committee@rosedale.org.au.



Our rabbit patrols are under way! At the same time in the early morning and in the evening, eight Rosedale residents take turns to walk one of three routes around North and South Rosedale. They record on the council iPad where, when and how many they spot as well as the character of the rabbit.

Council have started fumigating identified warrens on Boatshed beach. First they find the active burrow and put smoke down to find all entrances. Six to eight rabbits per entrance live in the warrens! All entrances are closed with cardboard then backfilled with sand, the fumigant is

rolled into the burrow and the last entrance is boarded and backfilled. A keep away sign is installed.

We have done the Boatshed area but there are obviously more warrens yet to be found as there are fresh diggings. Not all rabbits burrowed under the boats – those under the spikey lomandra made it challenging and no wonder we missed some. Council plan to stake out the area and maybe shoot as a strategy if they can.

South Rosedale has rabbits too and that area is next. It would be really good to hear sightings outside of our scheduled patrols...please email committee@rosedale.org.au.

If undeliverable please return to:
The Rosedale Association Inc.
PO Box 2125
MALUA BAY NSW 2536

The Rosedale Association Inc Newsletter
Print Post approved No: PP229200/00009

