

Visual Overview Resume for



Contract Research Organizations, Clinical Research Organizations, Biopharma, Industrial Laboratory & Clean Room Design, Project/ Process & Construction Management, Safety, Regulatory Compliance, and much more...

Prepared by

Jonas Moses, PhD PA

stestic™ Partner, Founder

Jonas Moses, PhD PA

stestic™ Partner/Founder

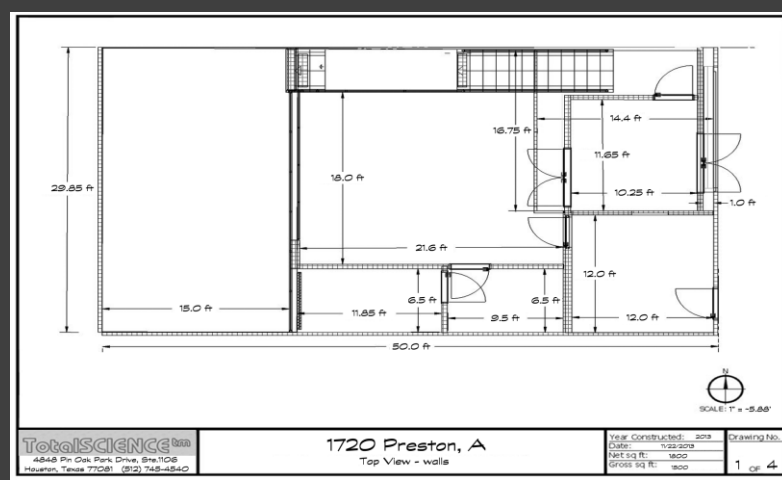
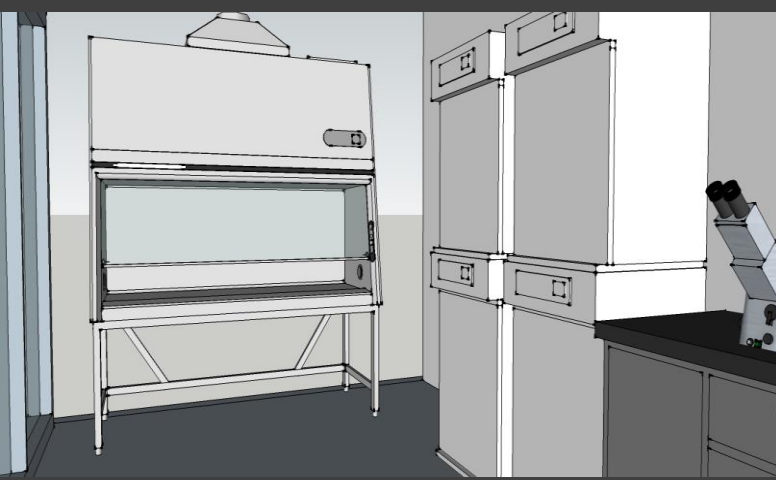
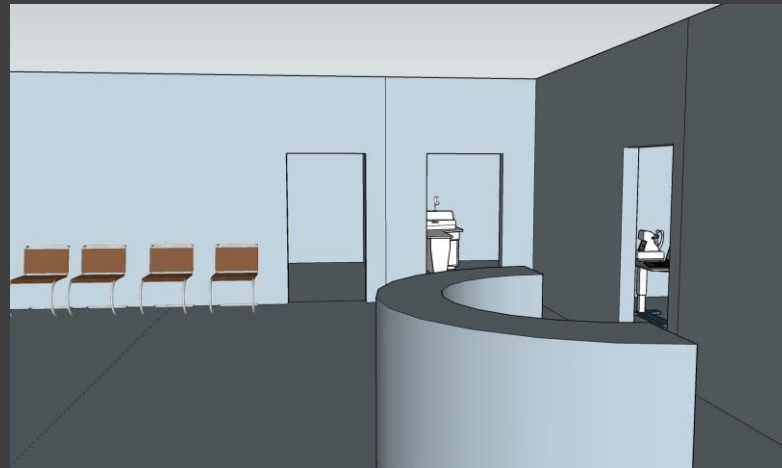
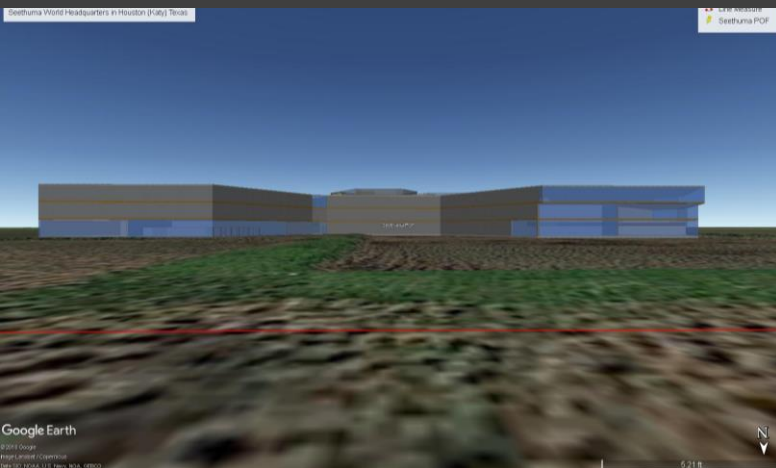
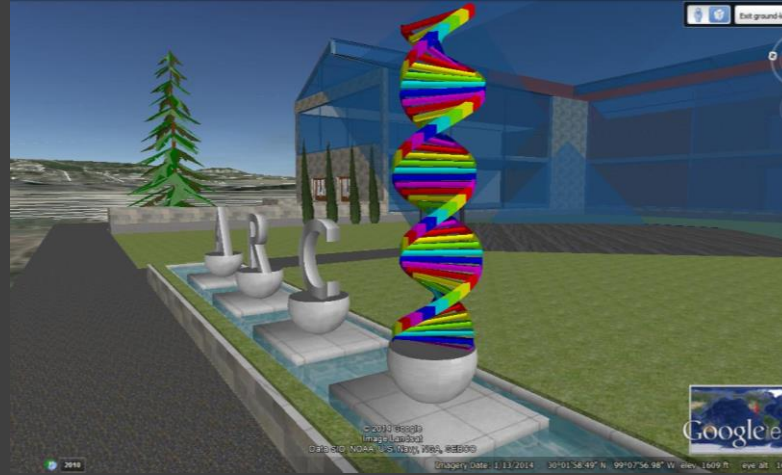
- PhD in Bioengineering - Cell & Tissue Engineering
- BS in Physiology and Vision Science
- US Army Masters in Organizational Leadership and Development
- Physician Assistant (PA) - Clinical Medicine

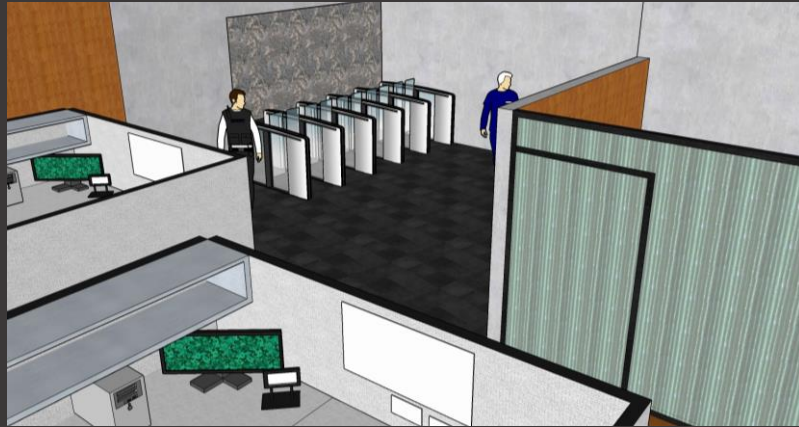
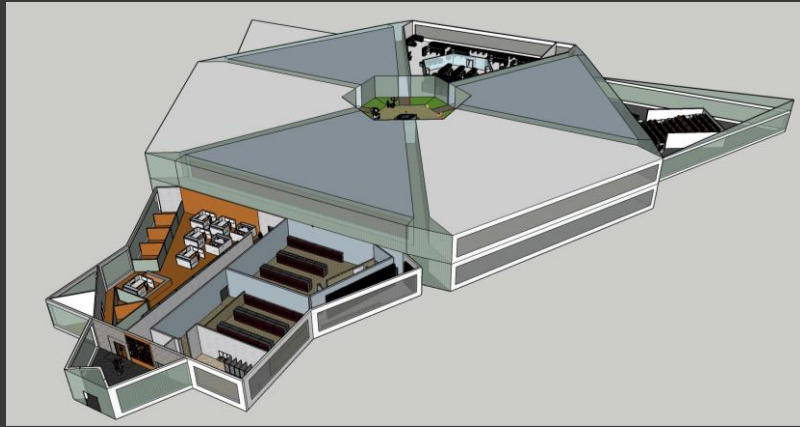
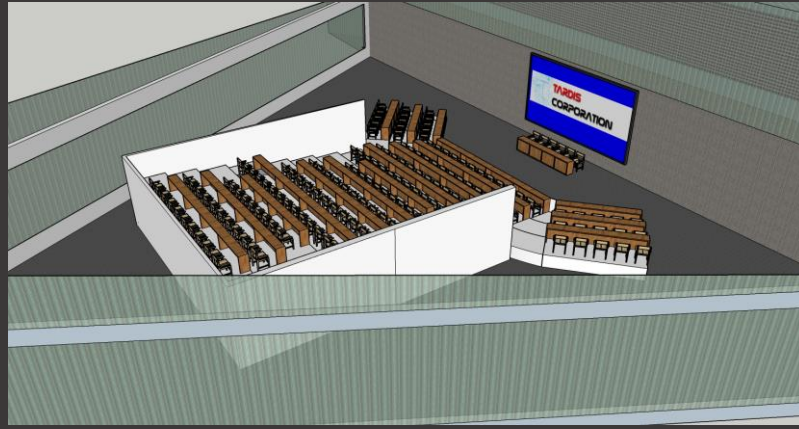


- Liaison - Industry, Academia, Government
- Commercial/CRO/Academic R&D
- Project, product & process management
- Quality assurance/quality control
- Environmental health & safety management
- Regulatory affairs & compliance
- Intellectual property (IP) development
- Laboratory/clean room design & implementation
- Bioengineering, biopharma & biotechnology
- Technology transfer & translational research
- Commercialization of innovation
- In vitro / in vivo diagnostics
- Biomaterials, biocompatibles, bioinerts
- Bioinformatics, data analytics
- Conceptualization, prototyping, testing
- Business development, capture management
- Corporate communications, medical information
- Scientific, medical, technical & business writing

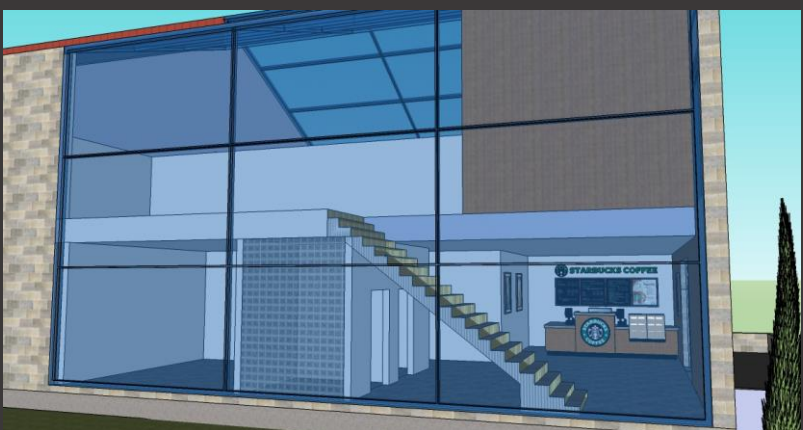
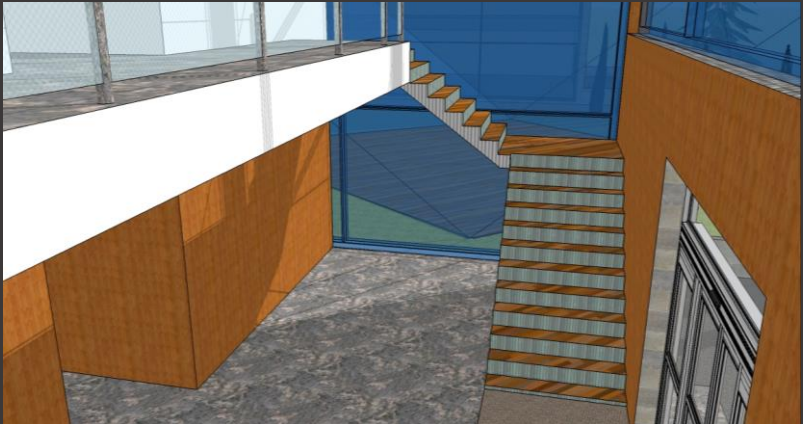
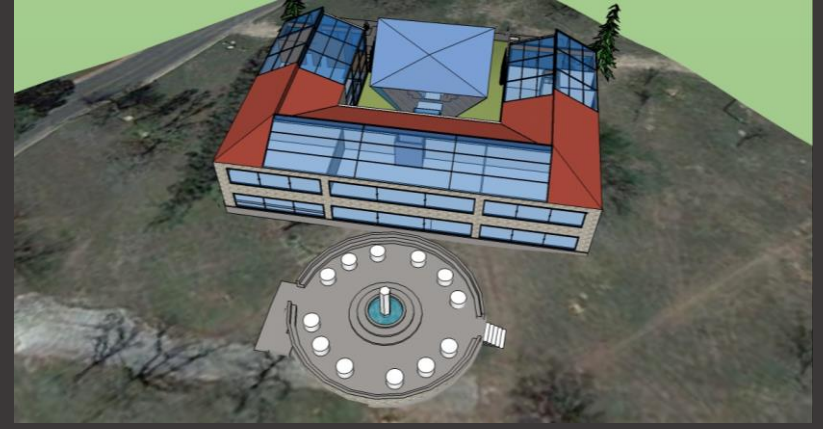
SELECTED DESIGN/BUILD PROJECTS

- TARDIS CORPORATION HQ
- SCHREINER UNIVERSITY INNOVATION CENTER
- SEETHUMA HOUSTON HQ
- GABINETE de DIAGNOSIS VISUAL SC CLINIC
- DATAFLOW 360 ANALYTICS
- TOTAL SCIENCE INC. LABS
- TESTEN LABS



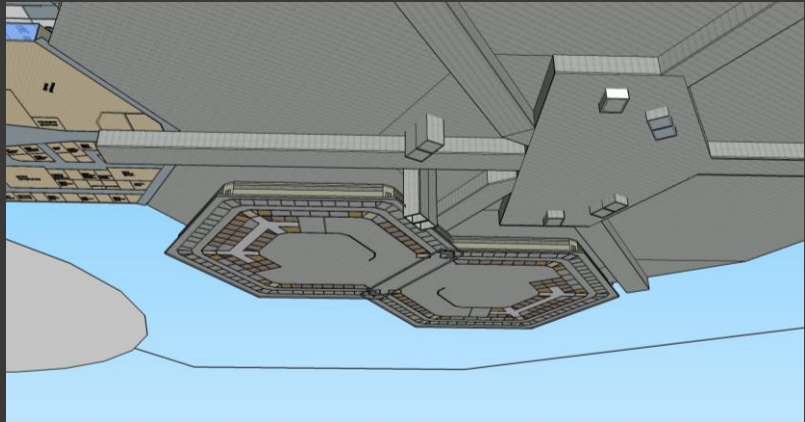
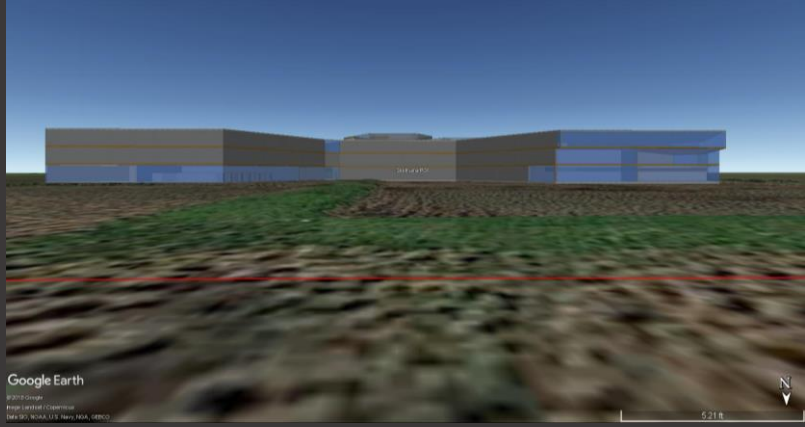
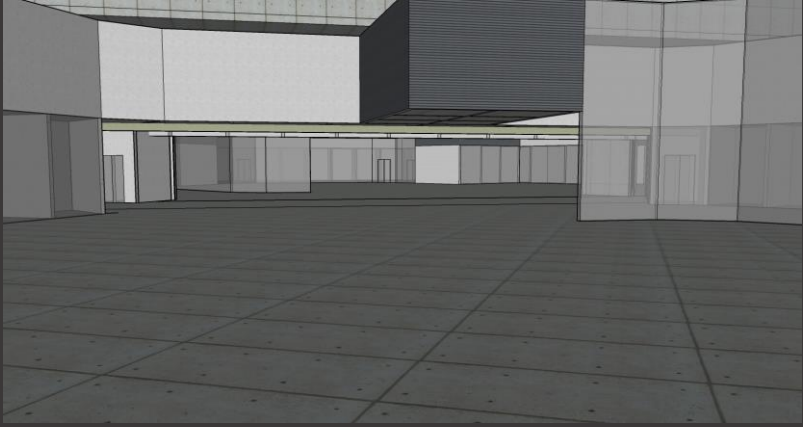


TARDIS CORPORATION Contract Research (CRO)/ Collaborative Research Organization (CoRO)



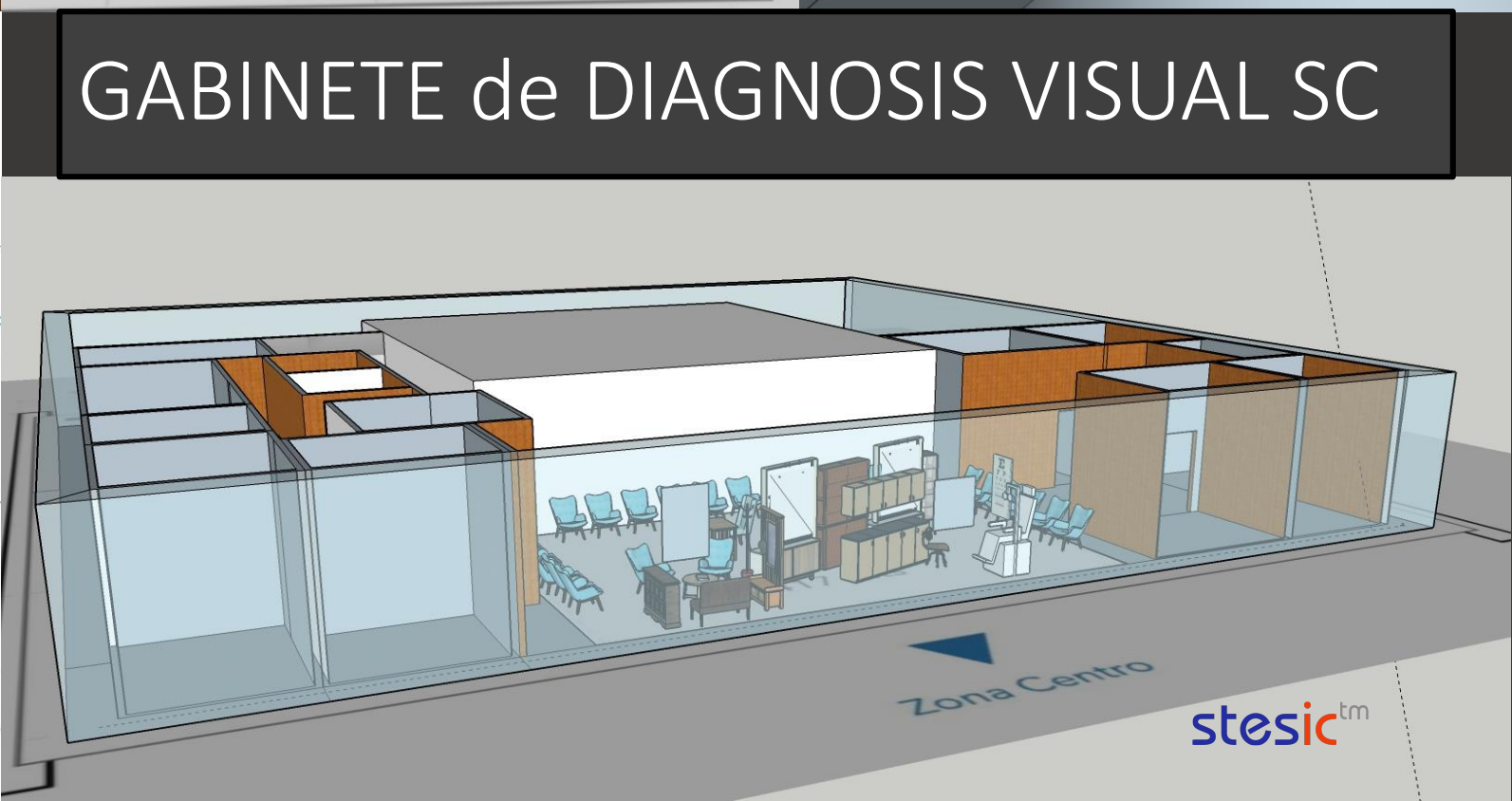
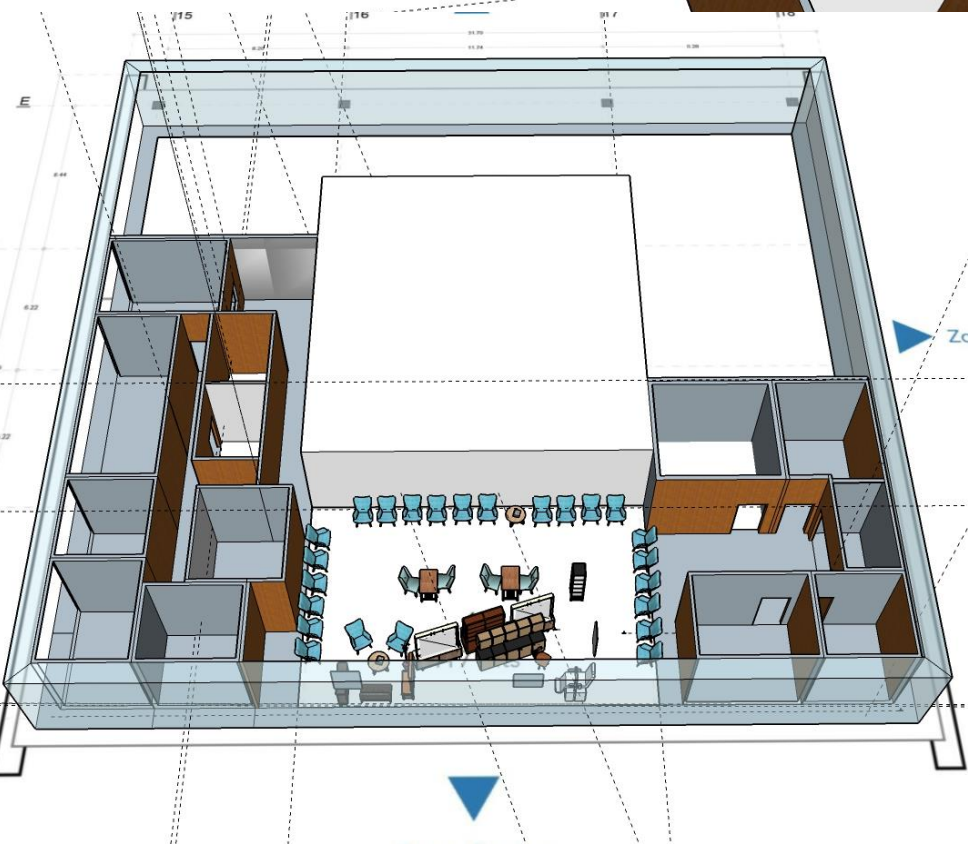
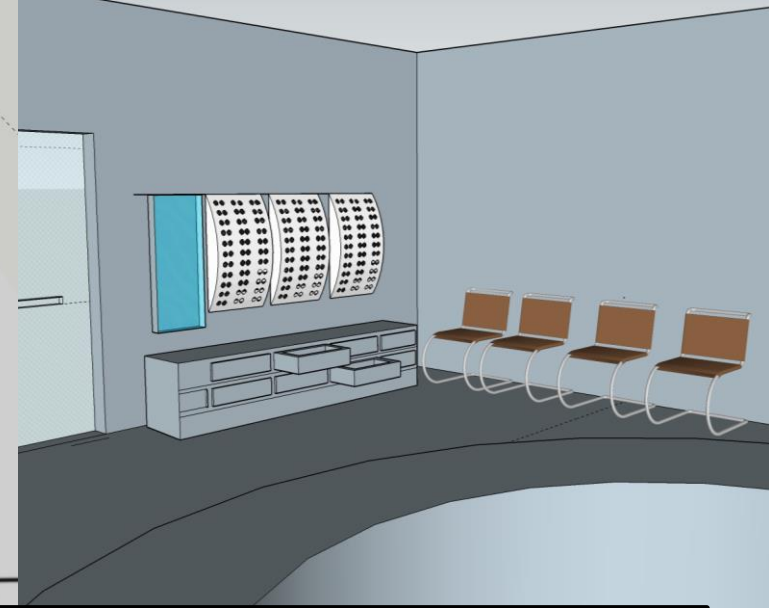
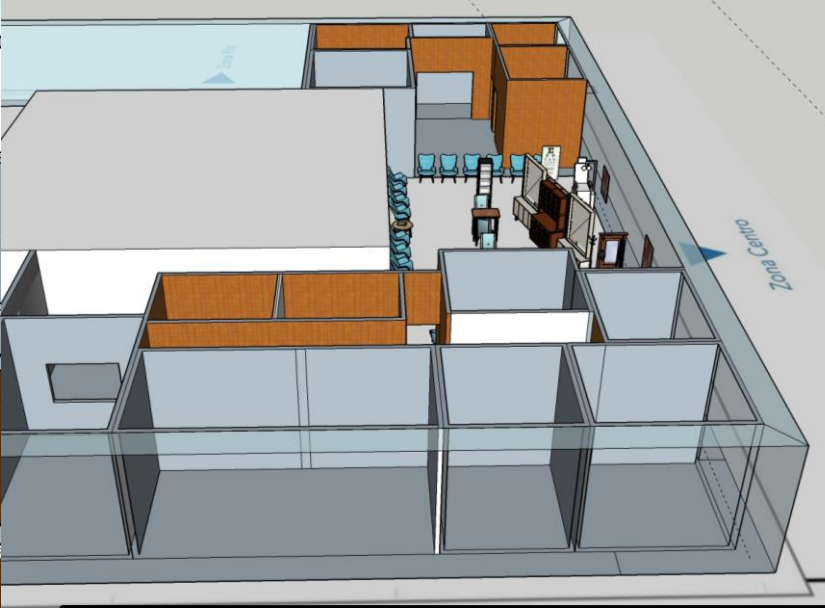
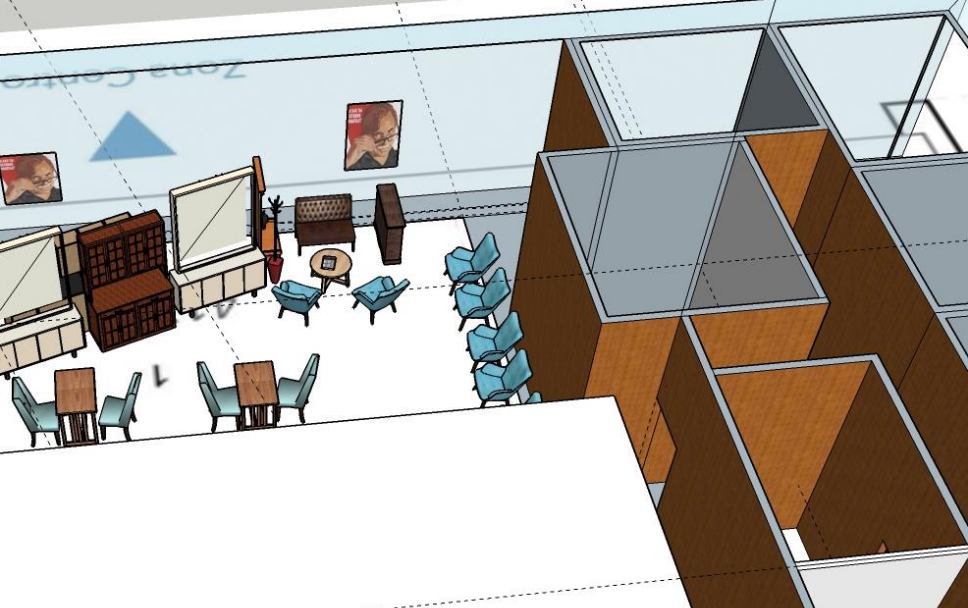
SCHREINER UNIVERSITY INNOVATION CENTER

[Collaborative & Contract
Translational Research]

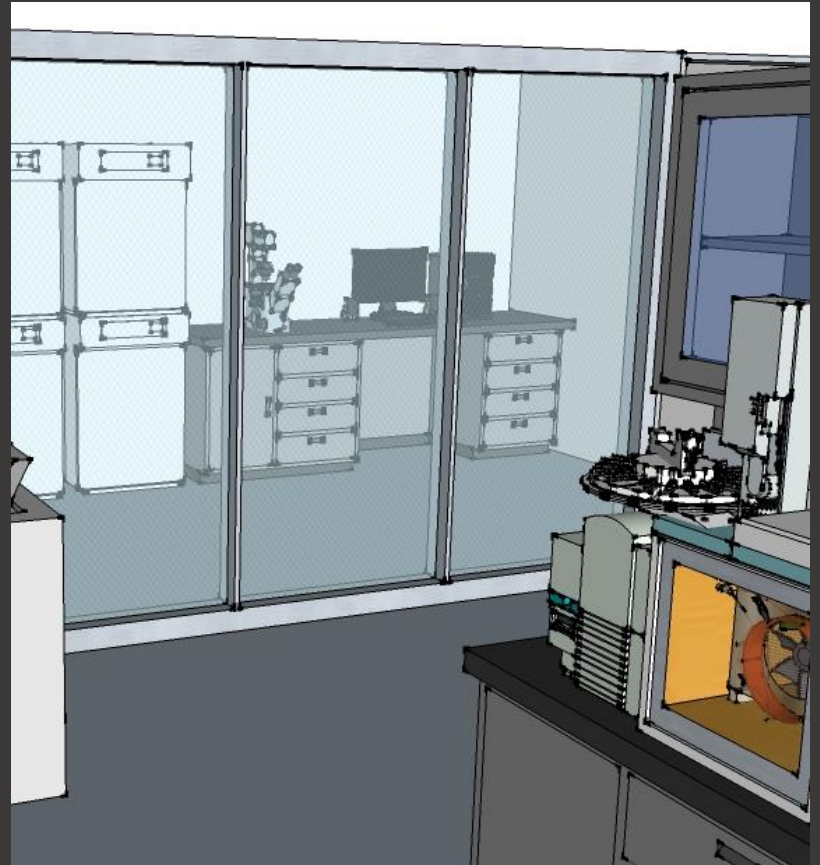


SEETHUMA WORLD HQ – HOUSTON

CoRO [Collaborative Research]

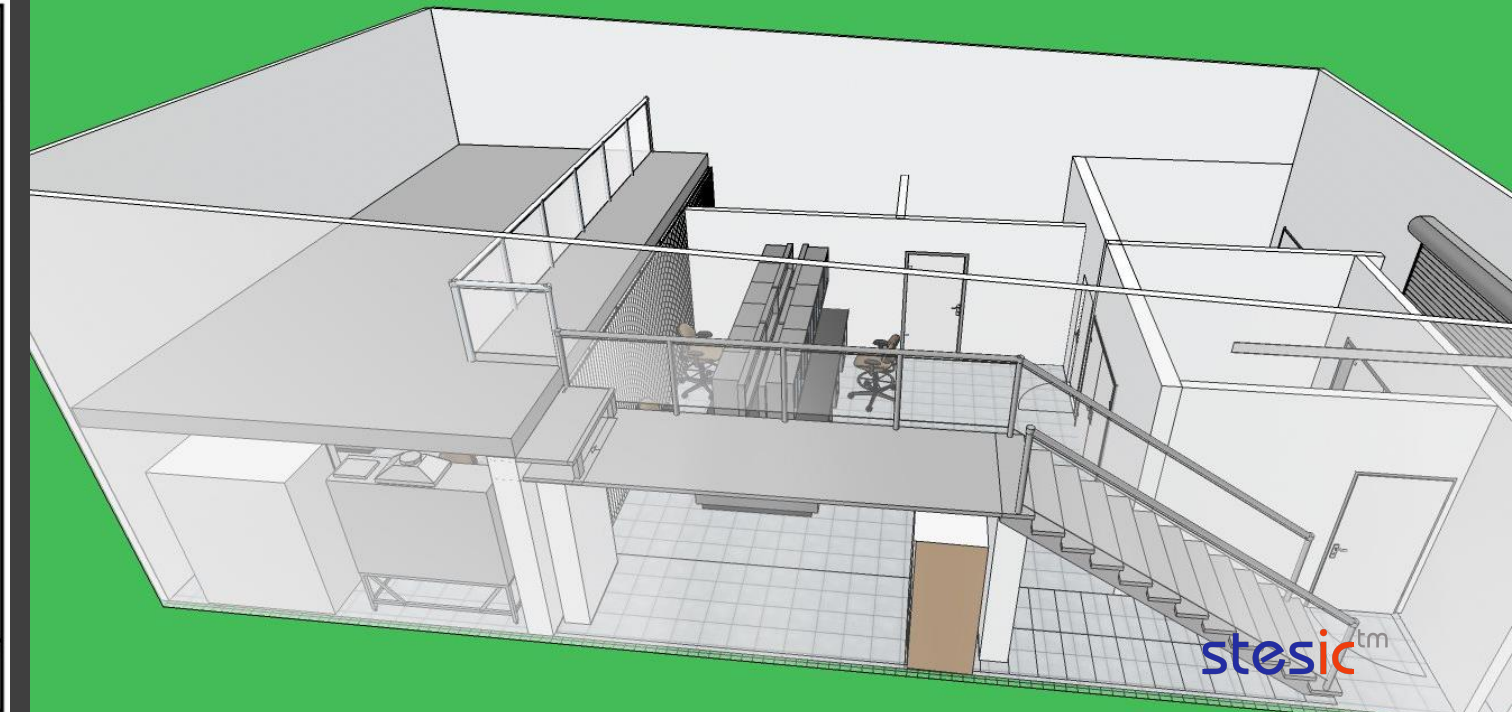
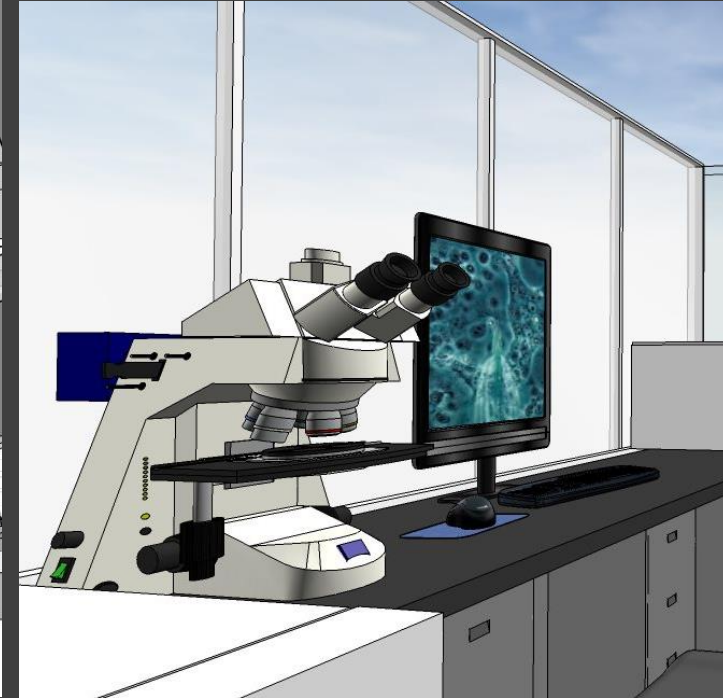


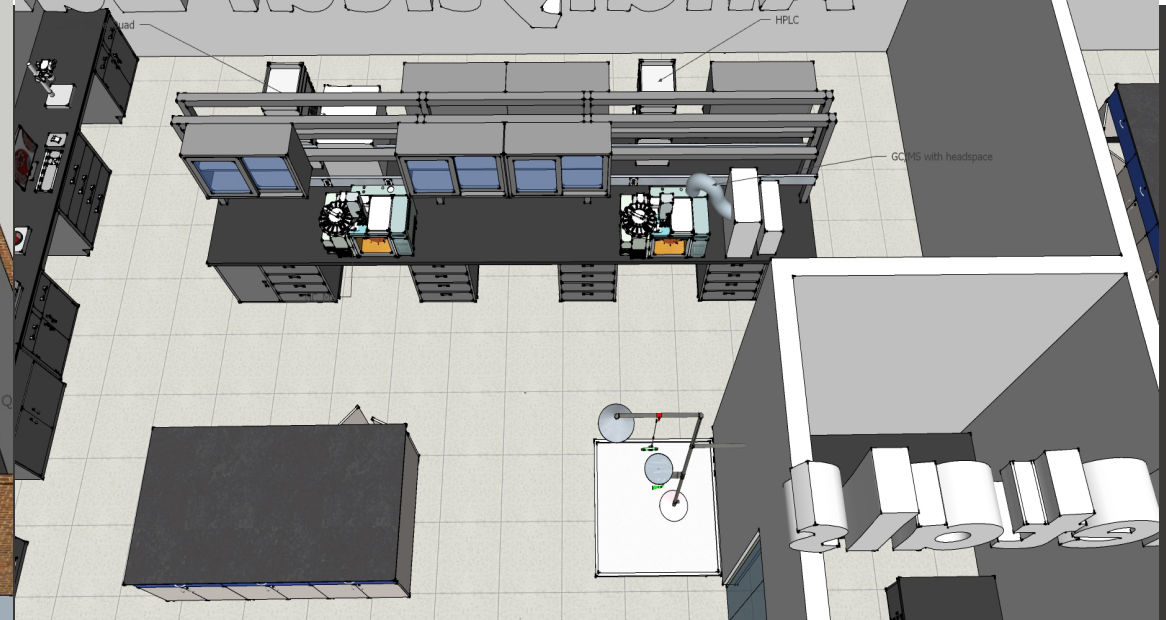
GABINETE de DIAGNOSIS VISUAL SC



DATAFLOW 360 ANALYTICS

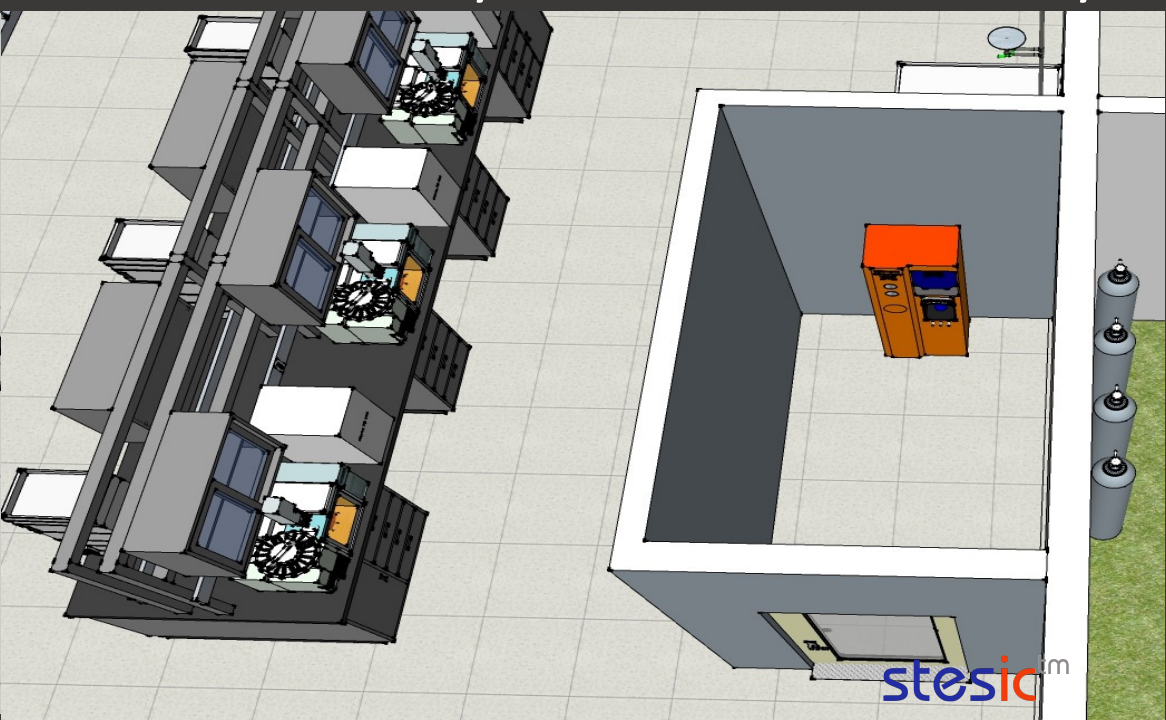
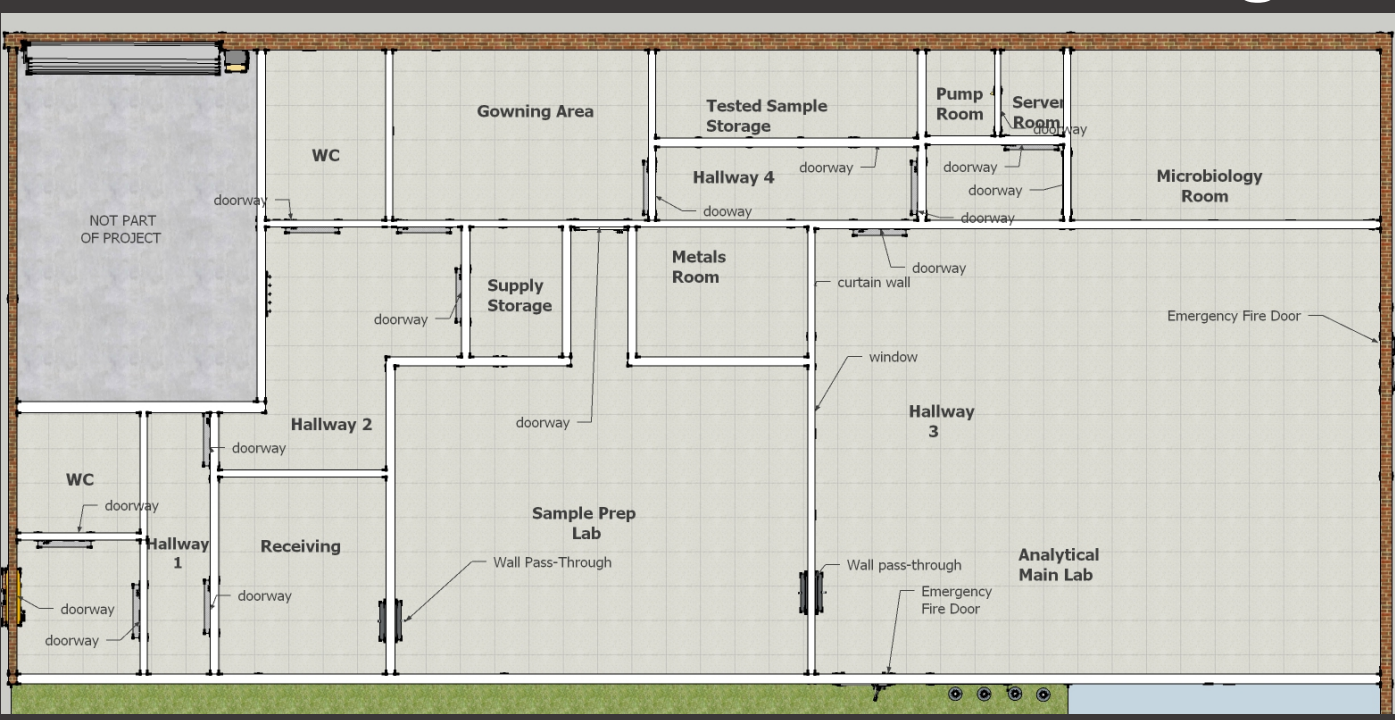
Analytical/Testing Laboratory





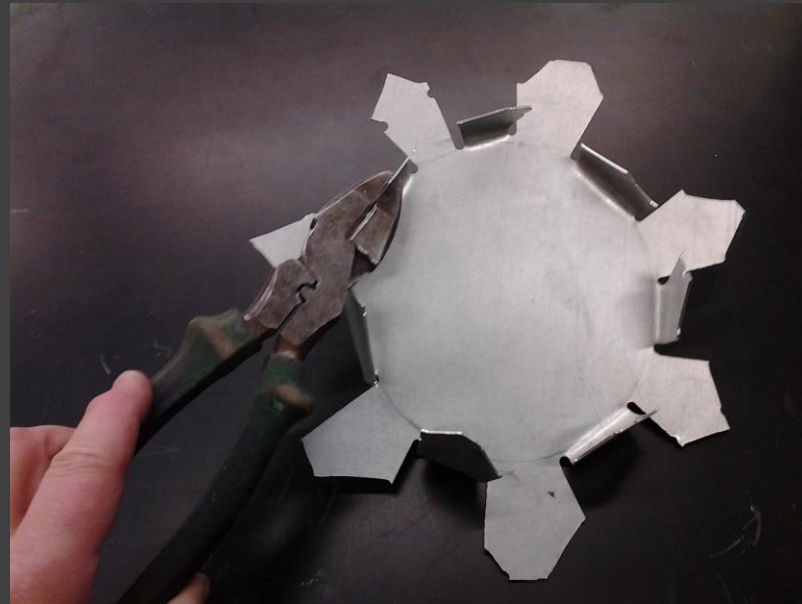
TESTEN LABS / California

Agribusiness Analytical Laboratory

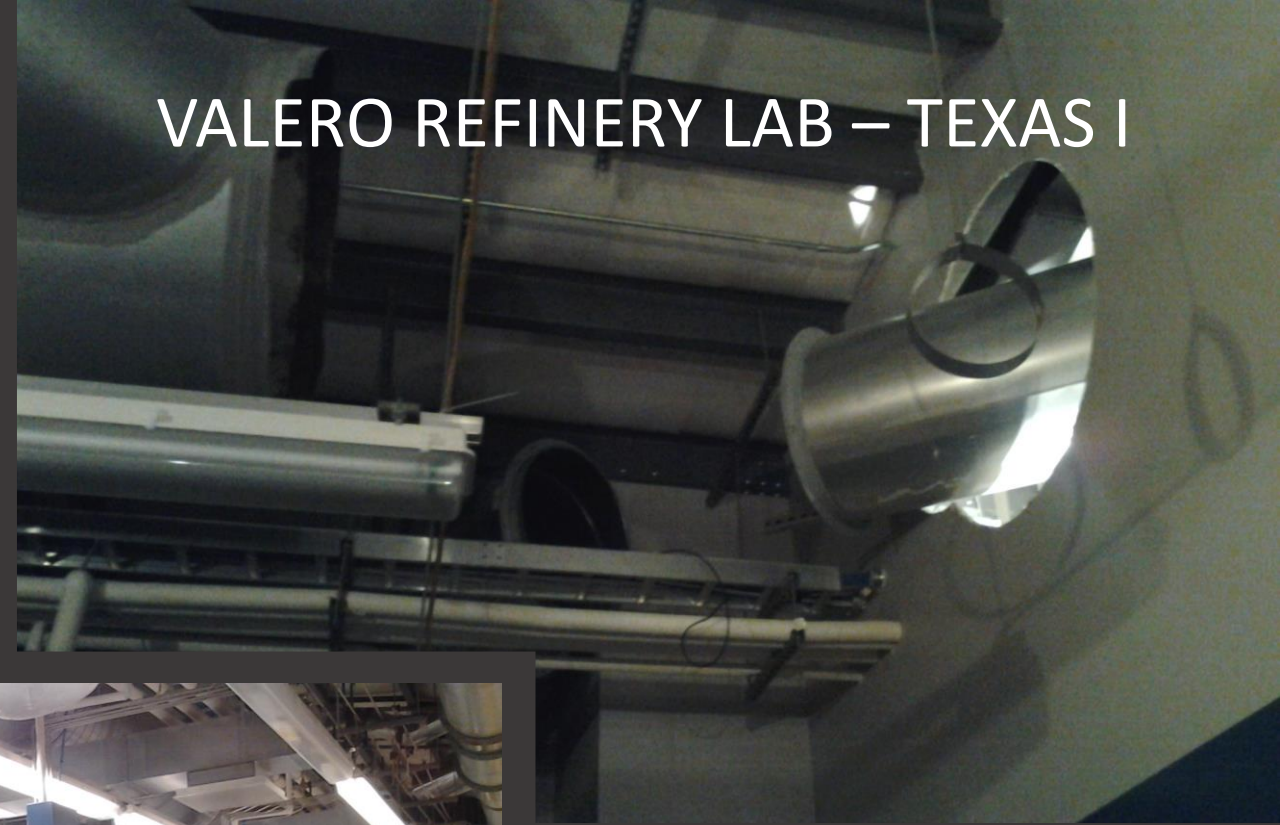


SELECTED INDUSTRIAL PROJECTS

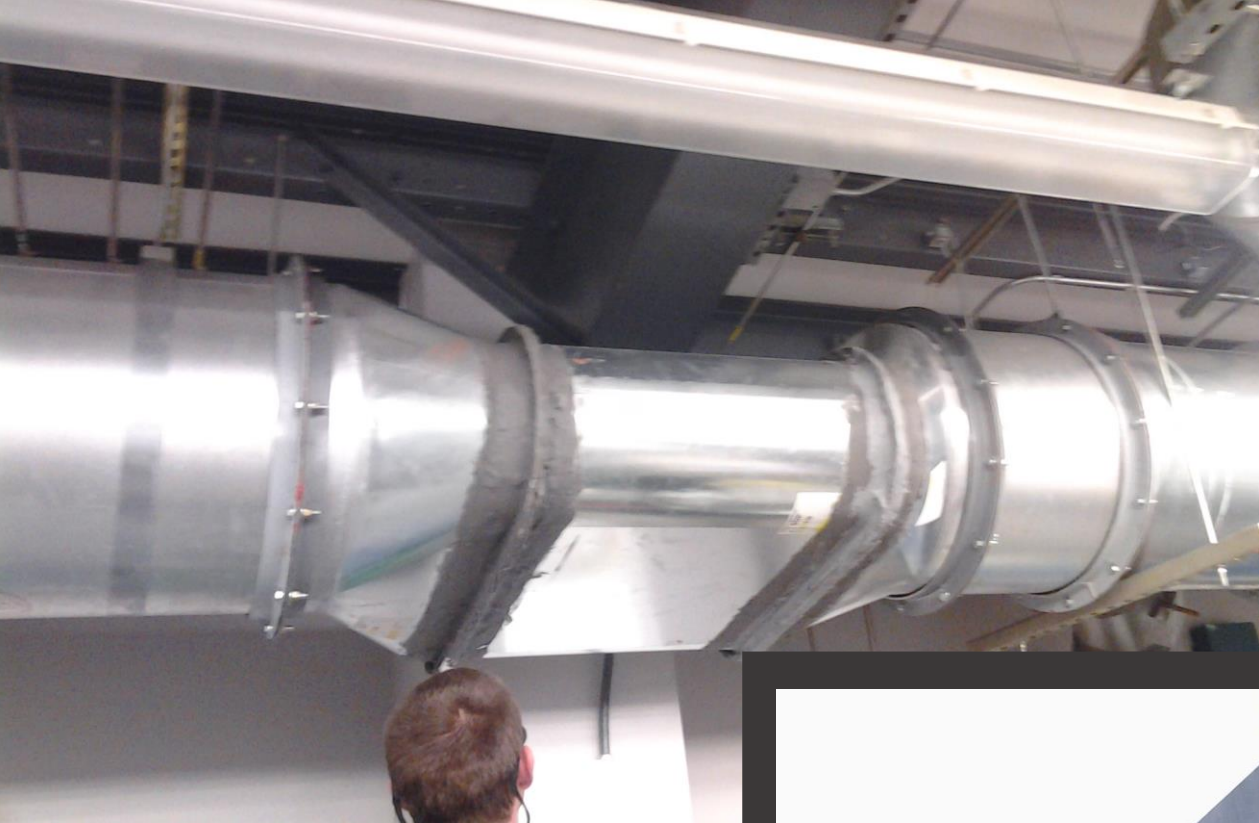
- VALERO ENERGY TEXAS I
 - Onsite Safety Manager
 - HVAC Design
 - Installation & Certification
- VALERO ENERGY TEXAS II
 - Onsite Safety Manager
 - HVAC Design
 - Installation & Certification
- EXXON WOODLANDS
 - Onsite Safety Manager
 - HVAC Design
 - Installation & Certification
- DATAFLOW 360
 - Environmental Monitoring & Testing
 - Air Quality
 - Environmental Contamination
 - Onsite Safety Manager



VALERO REFINERY LAB – TEXAS I

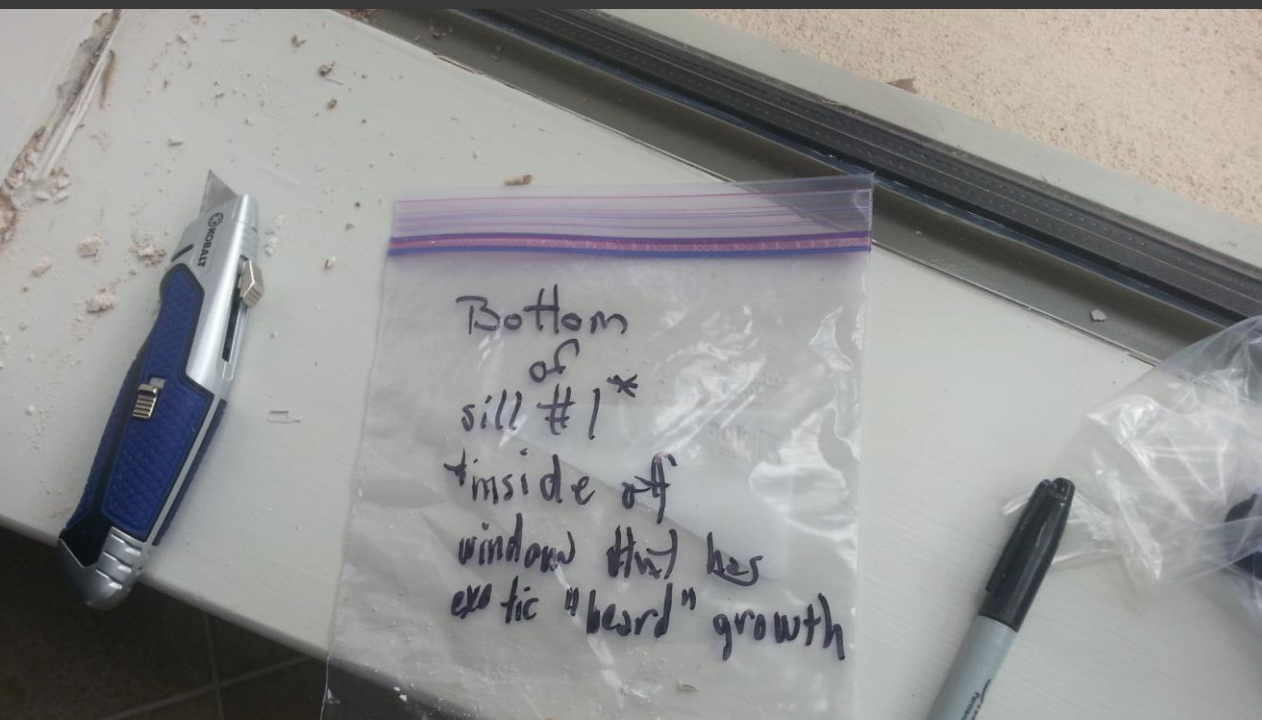
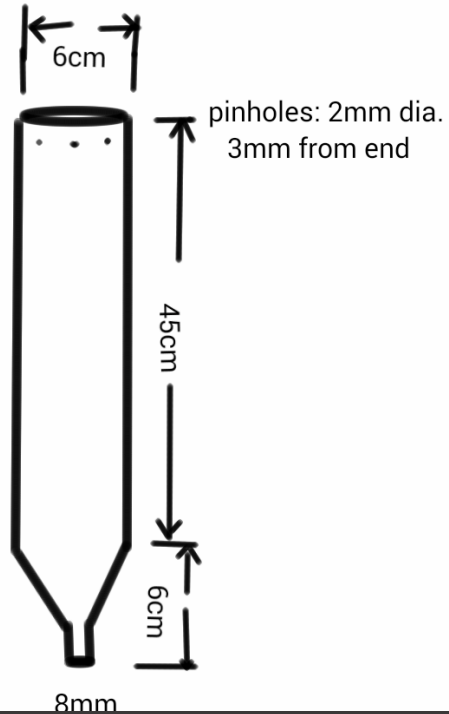


VALERO REFINERY LAB – TEXAS II





EXXON WOODLANDS HQ LABORATORIES



DATAFLOW 360 ENVIRONMENTAL TESTING