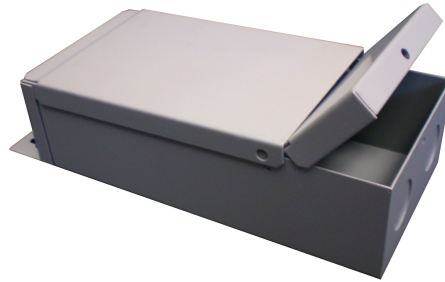




SPECIFICATION SHEET

12VDC MAGNETIC DIMMABLE LED POWER SUPPLIES



FEATURES

- 3 YEAR FREE REPLACEMENT WARRANTY
- FULLY DIMMABLE, WITH LOW-VOLTAGE MAGNETIC DIMMER
- 1/8" STEEL, POWDER COATED NEMA 3R CASE
- STANDARD WITH MANDATORY SECONDARY PROTECTION
- MEET CLASS 2 OUTPUT LIMITS
- 12 VOLT "DC" RATED OUTPUT
- MEETS OR EXCEEDS ALL UL, CUL, ANSI/UL, CSA REQUIREMENTS.

REQUIREMENTS

- MEETS THE REQUIREMENTS FOR UL STANDARDS 2108 AND 1838
- MANDATORY SECONDARY PROTECTION, AS STATED IN THE NATIONAL ELECTRIC CODE ARTICLE 411, (1993, 1996, 1999, 2002, 2005 AND 2008)
- MAY BE USED WITH INDIVIDUAL "LISTED" COMPONENTS TO MEET "SYSTEM" REQUIREMENTS, AS LONG AS ALL PARTS LISTED TO SAME ANSI/UL STANDARD

| | 120 WATT | 180 WATT | 240 WATT | 300 WATT |
|------------------------|---------------------|---------------------|---------------------|---------------------|
| PART NUMBER | SEB12DC-120W-3R-277 | SEB12DC-180W-3R-277 | SEB12DC-240W-3R-277 | SEB12DC-300W-3R-277 |
| PRIMARY VOLTAGE | 277VAC-1A MAX | 277VAC-1.75A MAX | 277VAC-2.75A MAX | 277VAC-2.75A MAX |
| OUTPUT VOLTAGE | 12VDC-10A MAX | 12VDC-15A | 12VDC-20A MAX | 12VDC-25A MAX |
| BREAKERS | 2x5A | 3x5A | 4x5A | 5x5A |
| FREQUENCY | 60 Hz | 60 Hz | 60 Hz | 60 Hz |
| DIMENSIONS | 14" x 8" x 5" | 14" x 8" x 5" | 14" x 8" x 5" | 14" x 8" x 5" |
| WEIGHT | 10 LBS. | 12 LBS. | 4 LBS. | 17 LBS. |