

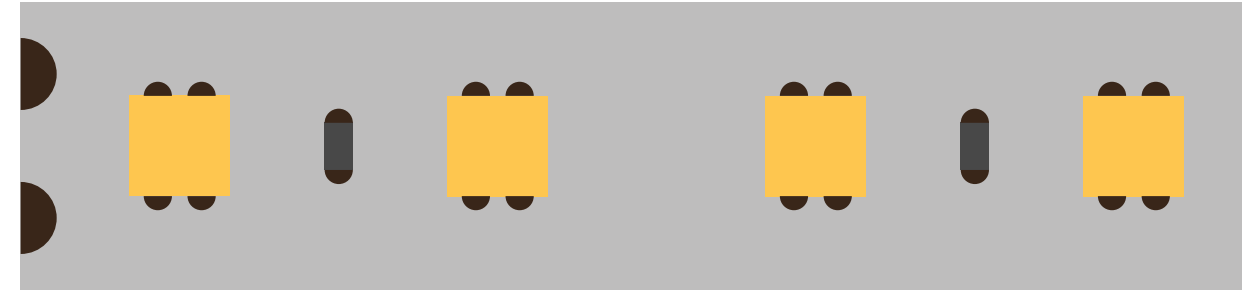
# Solder Staple + Machine

Hand soldering will be a thing of the past

BrandKnew 2020

# How do we connect these?

How is this done today - typically?



## Soldering

<- 0.5px black line goes on the guide line.

Text and header are 10px from the guide lines and 5px from eachother.

Text is Left justified

## Wiring

<- 0.5px black line goes on the guide line.

Text and header are 10px from the guide lines and 5px from eachother.

Text is Left justified

## Connectors

<- 0.5px black line goes on the guide line.

Text and header are 10px from the guide lines and 5px from eachother.

Text is Left justified

## Header

<- 0.5px black line goes on the guide line.

Text and header are 10px from the guide lines and 5px from eachother.

Text is Left justified

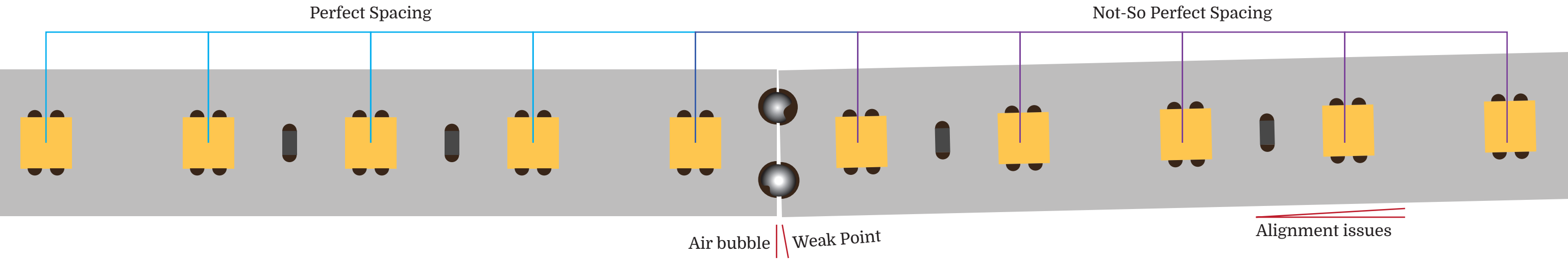
## Header

<- 0.5px black line goes on the guide line.

Text and header are 10px from the guide lines and 5px from eachother.

Text is Left justified

# What can go wrong?



## Header

<- 0.5px black line goes on the guide line.  
Text and header are 10px from the guide lines and 5px from each other.  
Text is Left justified

## Header

<- 0.5px black line goes on the guide line.  
Text and header are 10px from the guide lines and 5px from each other.  
Text is Left justified

## Header

<- 0.5px black line goes on the guide line.  
Text and header are 10px from the guide lines and 5px from each other.  
Text is Left justified

## Header

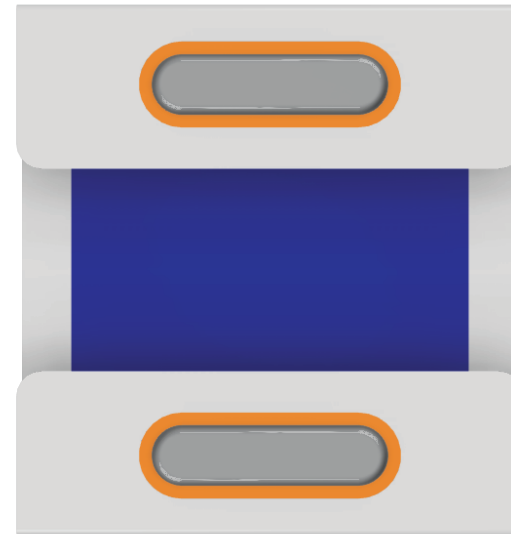
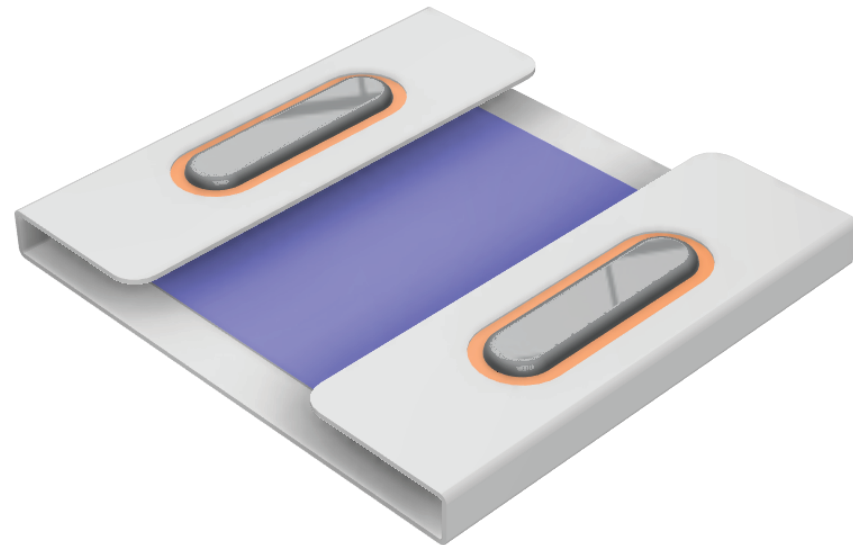
<- 0.5px black line goes on the guide line.  
Text and header are 10px from the guide lines and 5px from each other.  
Text is Left justified

## Header

<- 0.5px black line goes on the guide line.  
Text and header are 10px from the guide lines and 5px from each other.  
Text is Left justified

# Solder Staple Concept

What is the staple?



## Substrate Material

<- 0.5px black line goes on the guide line.  
Text and header are 10px from the guide lines and 5px from each other.  
Text is Left justified

## Solder on side

<- 0.5px black line goes on the guide line.  
Text and header are 10px from the guide lines and 5px from each other.  
Text is Left justified

## Adhesivce

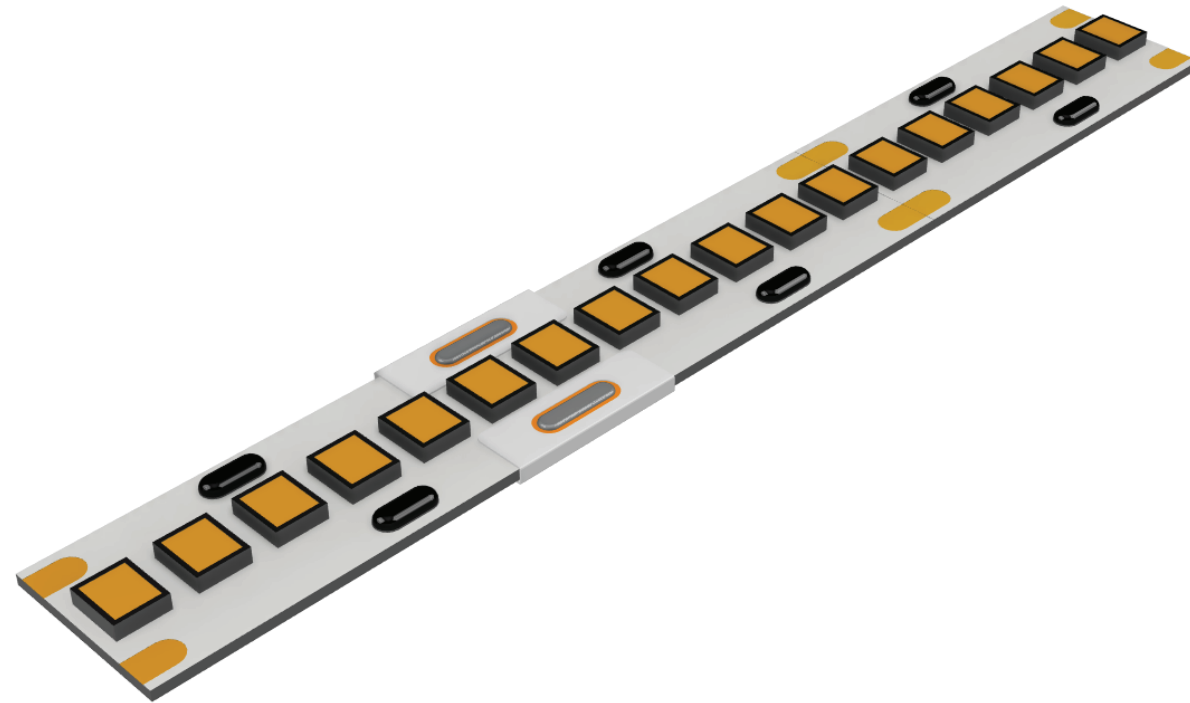
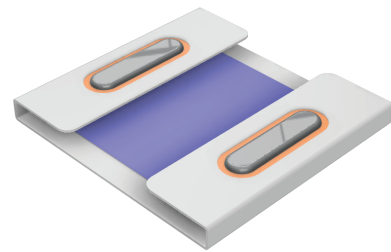
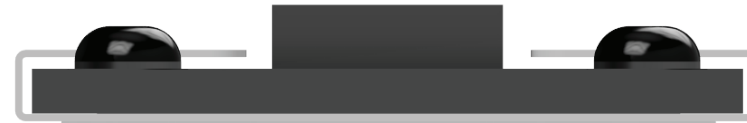
<- 0.5px black line goes on the guide line.  
Text and header are 10px from the guide lines and 5px from each other.  
Text is Left justified

## Header

<- 0.5px black line goes on the guide line.  
Text and header are 10px from the guide lines and 5px from each other.  
Text is Left justified

# Solder Staple Stapling

What is the staple?



## Header

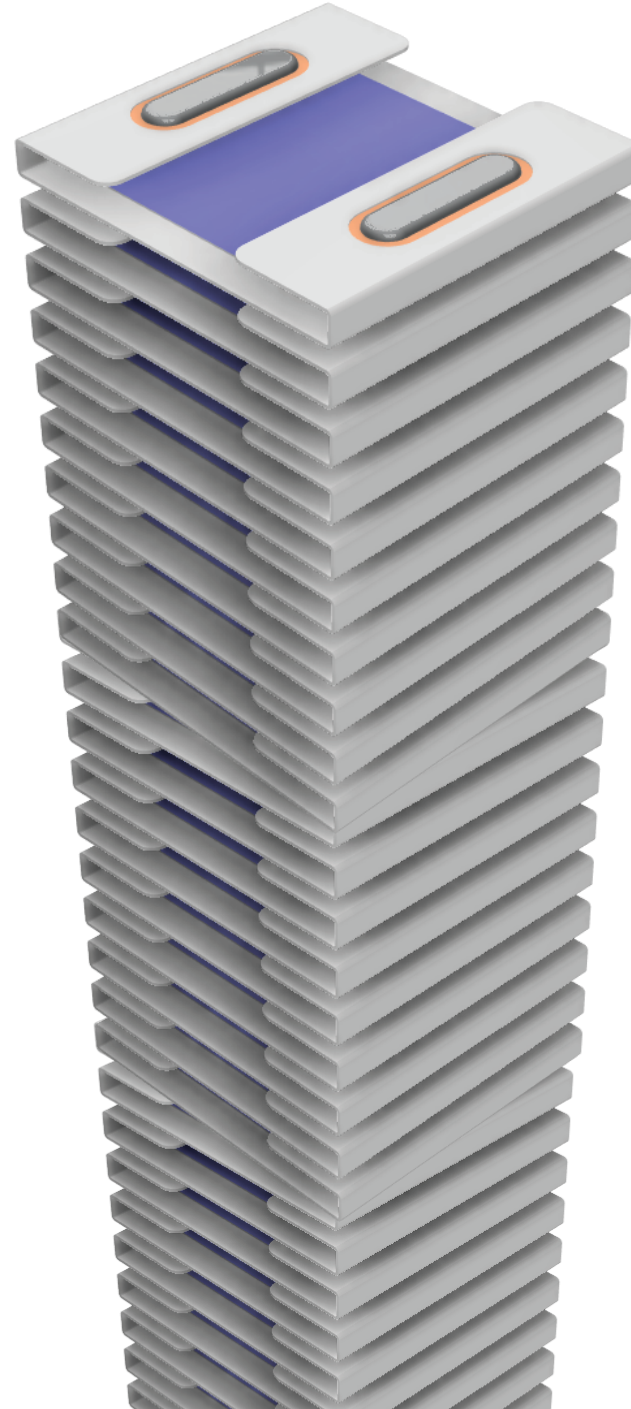
<- 0.5px black line goes on the guide line.  
Text and header are 10px from the guide lines and 5px from each other.  
Text is Left justified

## Header

<- 0.5px black line goes on the guide line.  
Text and header are 10px from the guide lines and 5px from each other.  
Text is Left justified

# Solder Staple Stapling

What is the staple?



## Header

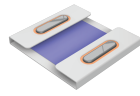
<- 0.5px black line goes on the guide line.  
Text and header are 10px from the guide lines and 5px from each other.  
Text is Left justified

## Header

<- 0.5px black line goes on the guide line.  
Text and header are 10px from the guide lines and 5px from each other.  
Text is Left justified

# Solder Staple Machine(s)

What is the staple?

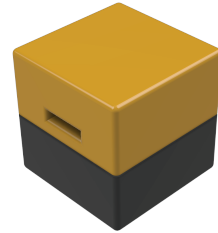


## The Staple

<- 0.5px black line goes on the guide line.

Text and header are 10px from the guide lines and 5px from each other.

Text is Left justified

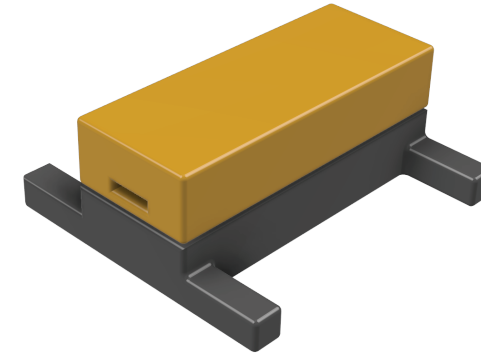


## Small - Hand Held

<- 0.5px black line goes on the guide line.

Text and header are 10px from the guide lines and 5px from each other.

Text is Left justified

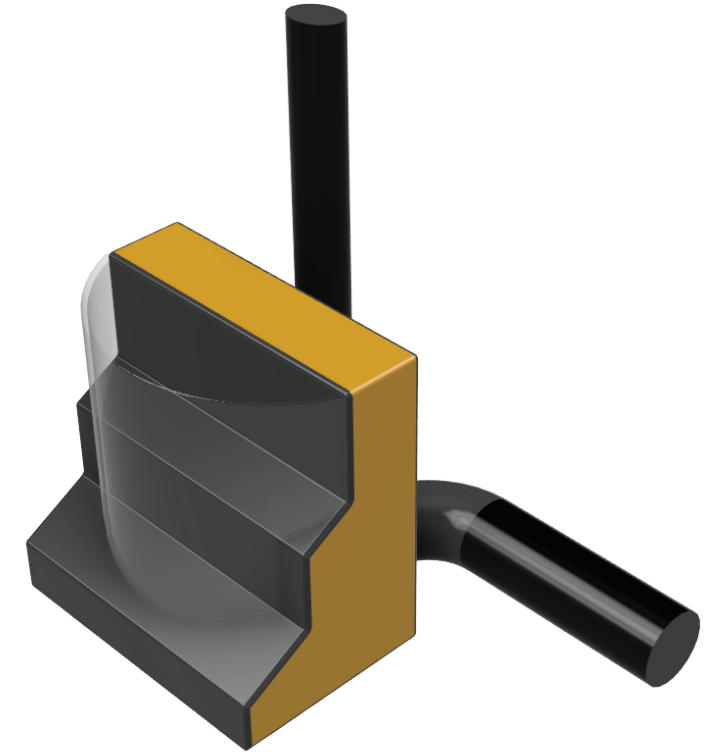


## Medium - Table Top

<- 0.5px black line goes on the guide line.

Text and header are 10px from the guide lines and 5px from each other.

Text is Left justified



## Large - Factory Floor

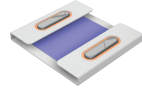
<- 0.5px black line goes on the guide line.

Text and header are 10px from the guide lines and 5px from each other.

Text is Left justified

# Solder Staple Machine(s)

What is the staple?

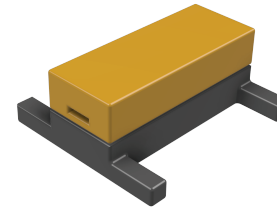


## The Staple

<- 0.5px black line goes on the guide line.

Text and header are 10px from the guide lines and 5px from each other.

Text is Left justified



## Medium - Table Top

<- 0.5px black line goes on the guide line.

Text and header are 10px from the guide lines and 5px from each other.

Text is Left justified

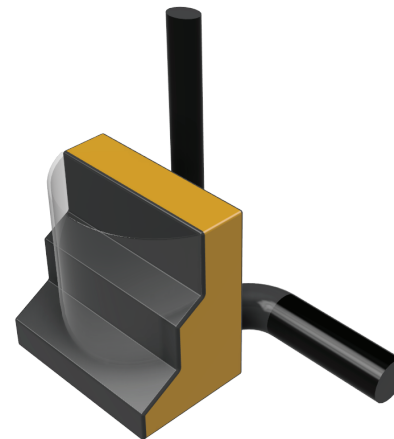


## Small - Hand Held

<- 0.5px black line goes on the guide line.

Text and header are 10px from the guide lines and 5px from each other.

Text is Left justified



## Large - Factory Floor

<- 0.5px black line goes on the guide line.

Text and header are 10px from the guide lines and 5px from each other.

Text is Left justified