



**RYCO AUTOMATIC SALMON CLEANER: HIGH SPEED, RELIABLE, & ACCURATE**

*RYCO Equipment, with Proven Salmon cleaning machines in use worldwide, now offers the #644 Salmon Cleaner, a completely re-designed version of RYCO's previous salmon machine, representing 5 years of development and testing.*

*RYCO's patented technology in the #644 results in better cleaning, faster throughput, reduced water usage, and higher quality fish and roe.*

*This performance increase is achieved with improved controls and adjustments, 50% more brushes than the older #643, improved fish location mechanisms, and separate variable-speed drives on the belt and brushes.*

*The #644 Salmon Cleaner processes fresh or frozen Salmon from 2 pounds to 18 pounds.*

*This machine is currently being used for Fresh and Frozen Wild Salmon, Canned Salmon, and Aquaculture Salmon.*

Brochure = D4445-A2, D4650-A3, D4650-A4

**FEATURES:**

- Processes fish from 2 to 18 pounds
- Heavy stainless construction
- Non-corroding components
- Suitable for shipboard installation
- Electrical Interlocks on main access
- Installed dry weight 1450 lbs
- Electric drive for variable speed

**OPTIONS:**

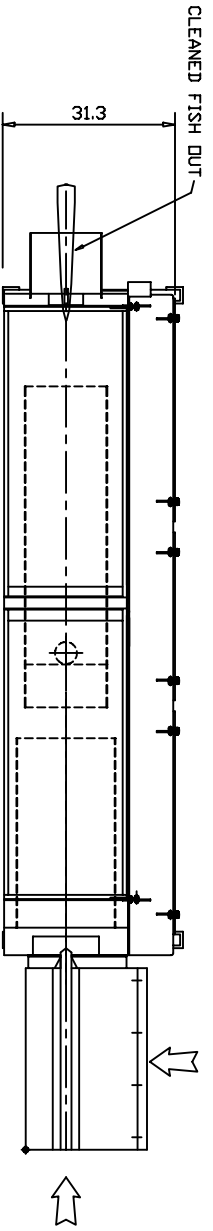
- Manual or Automatic infeed
- Electrical drive
- Egg conveyor
- Hydraulic drive

**SPECIFICATIONS MAY CHANGE – CONTACT RYCO FOR SPECIFIC APPLICATIONS**

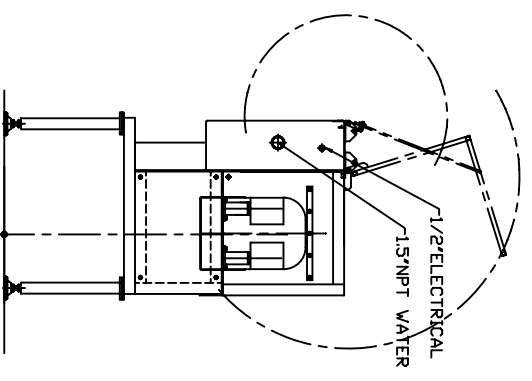
Address: 6810 220<sup>th</sup> Street SW  
Mountlake Terrace, WA 98043 – USA

Phone #: 425-744-0444  
Fax #: 425-673-2666

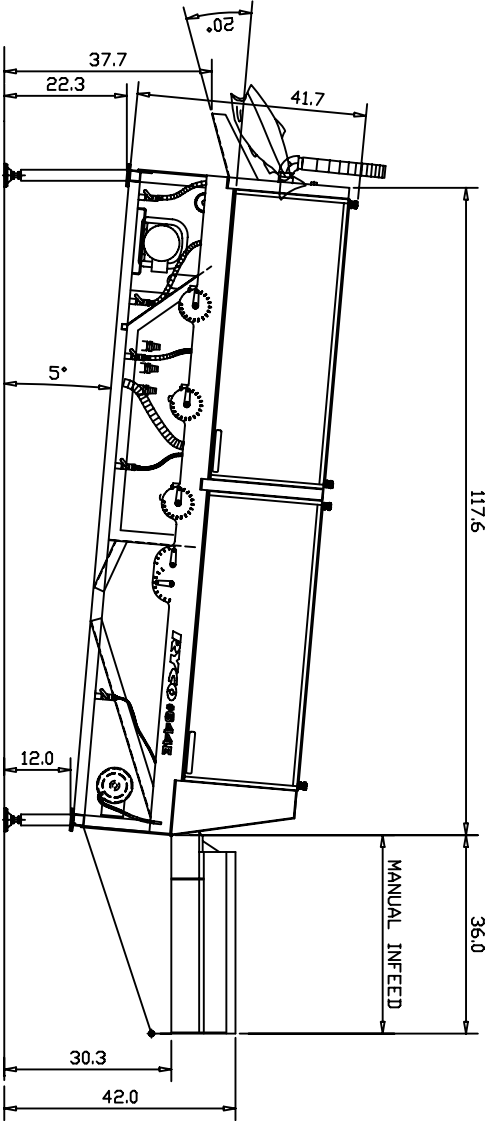
Web: [rycous.com](http://rycous.com)  
E-mail: [sales@rycous.com](mailto:sales@rycous.com)



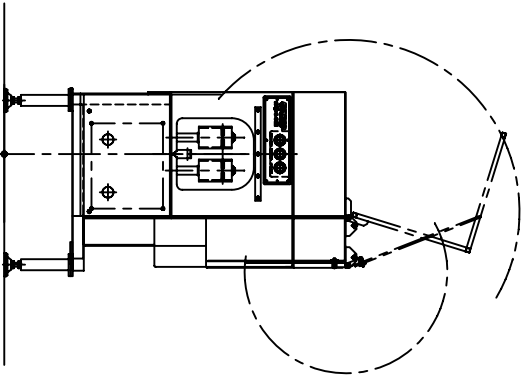
SYSTEM PLAN VIEW



OUTFEED ELEVATION

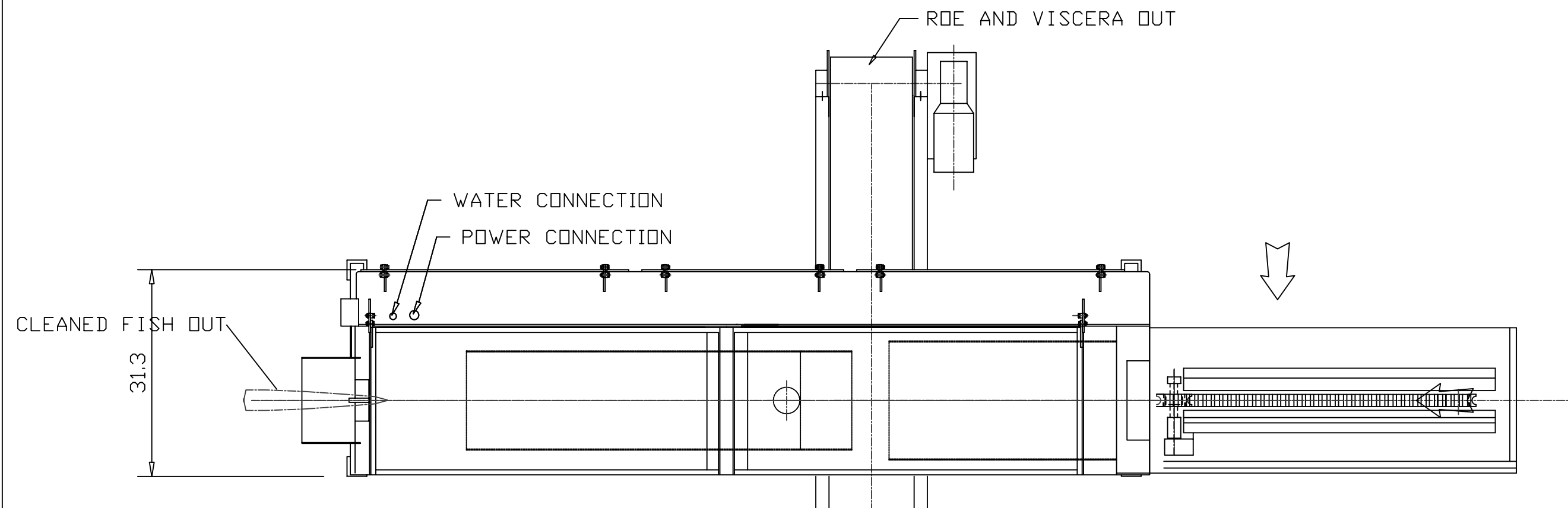


SIDE ELEVATION

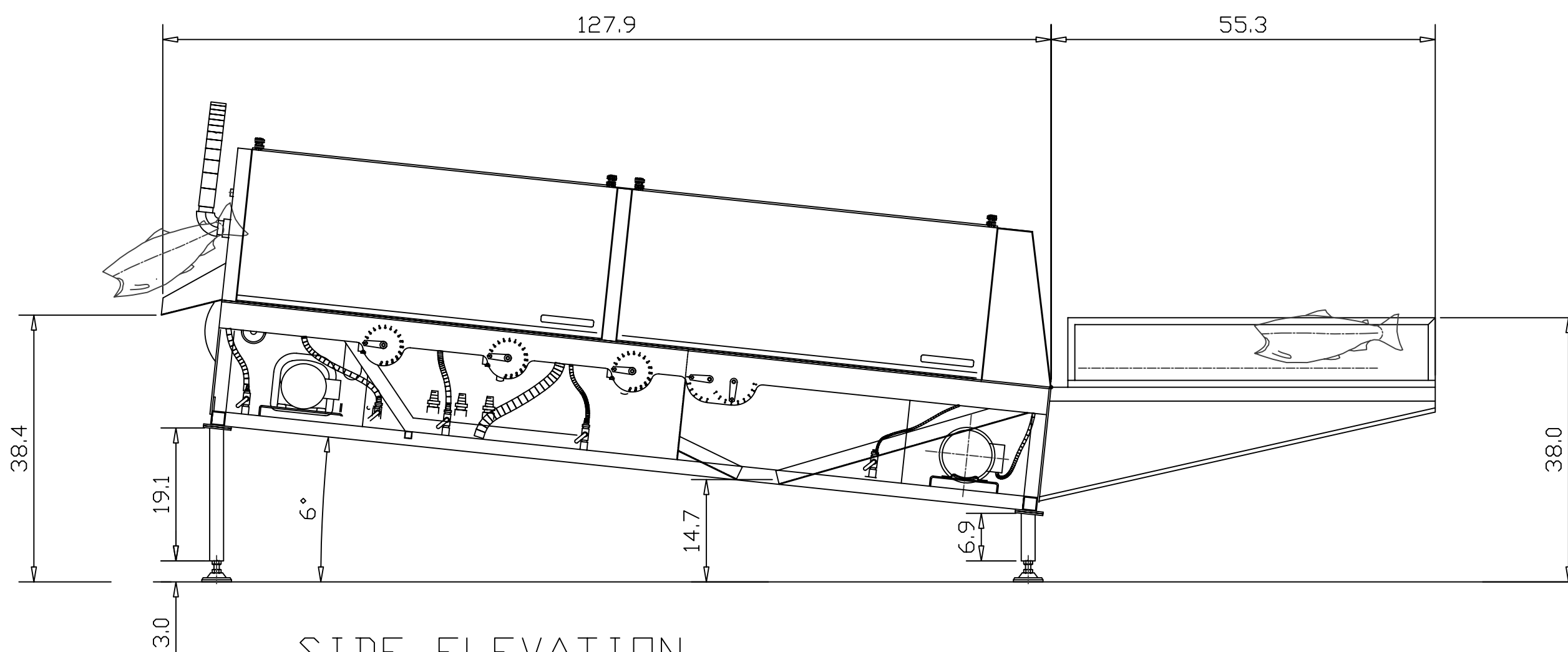


INFEED ELEVATION

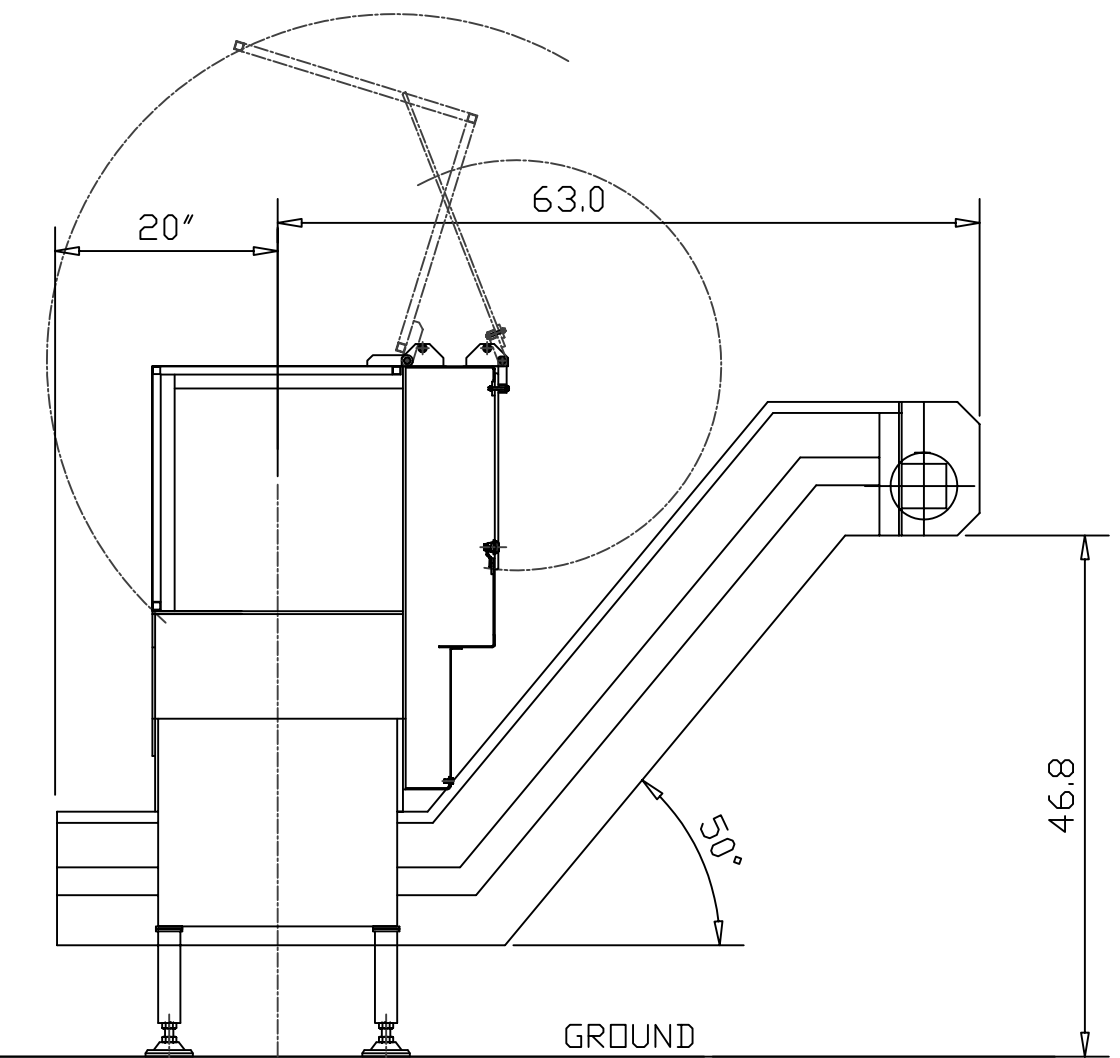
- NOTE:
1. SHIPPING CRATE APPROX. 54\"/>



SYSTEM PLAN VIEW



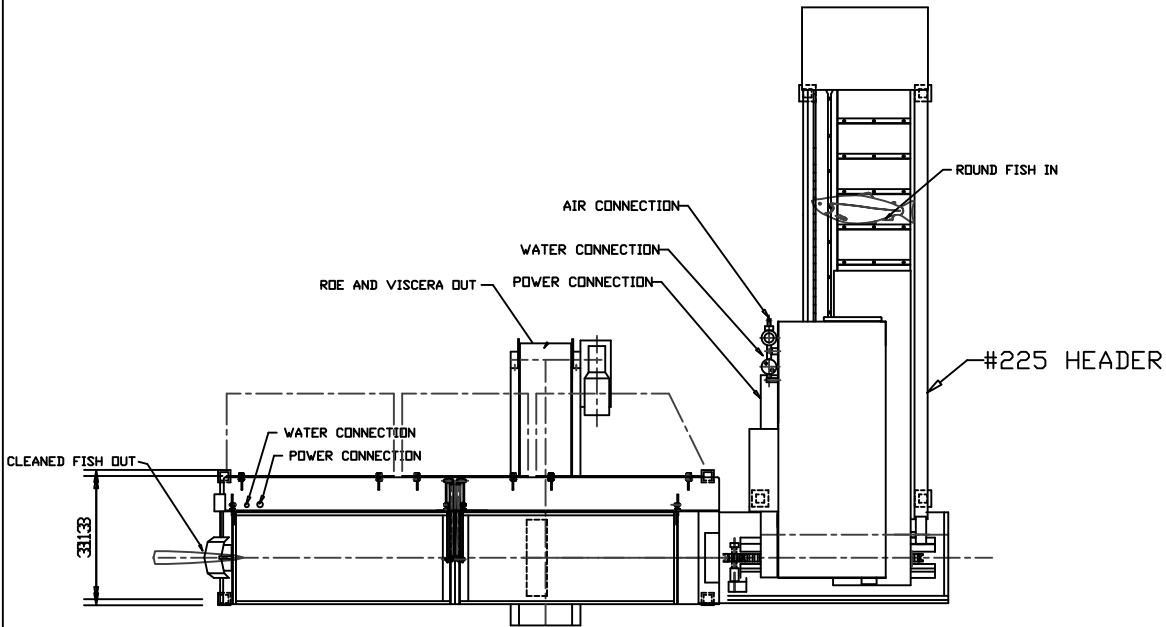
SIDE ELEVATION



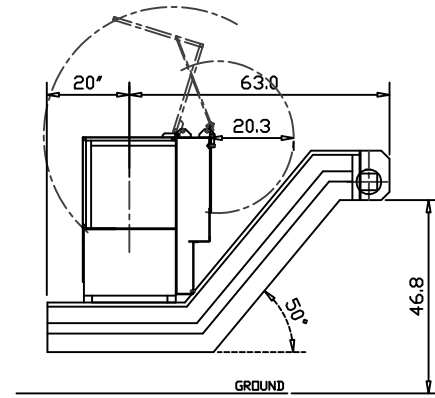
INFEED ELEVATION

- NOTE:
1. SHIPPING CRATE APPROX. 54"Wx48"HIGHx190"LONG
  2. SHIPPING WEIGHT APPROX. 1400 LBS
  3. POWER=3HP 208, 220 OR 440VAC, Varispeed controlled.
  4. NO AIR REQUIRED.

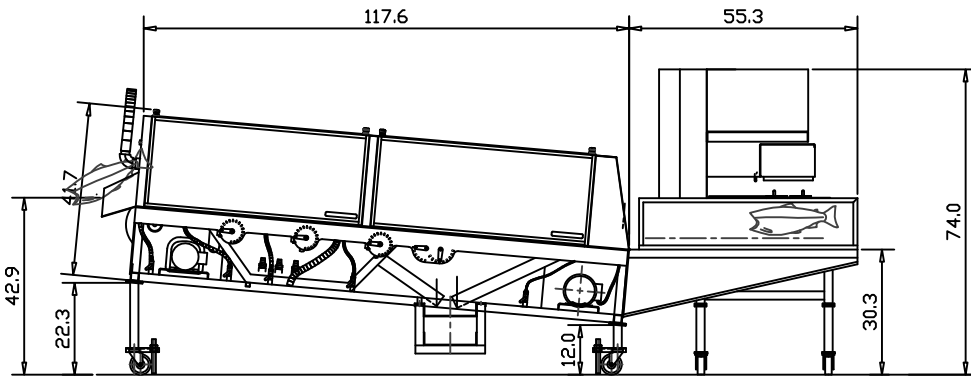
REV20100406: CHG. MACHINE ANGLE 5 to 6deg/RR



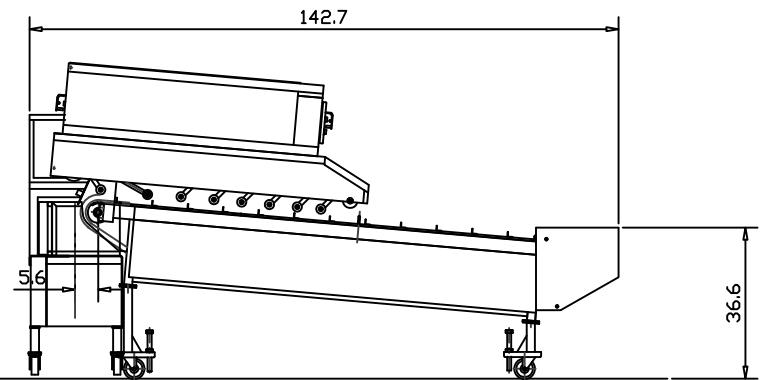
SYSTEM PLAN VIEW



SECTION AT EGG CONVEYOR

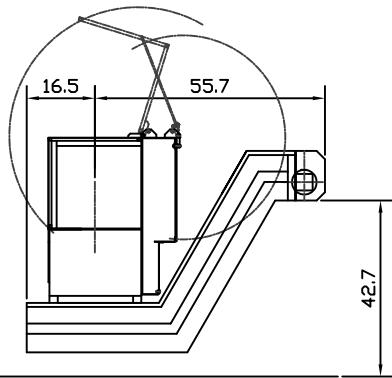
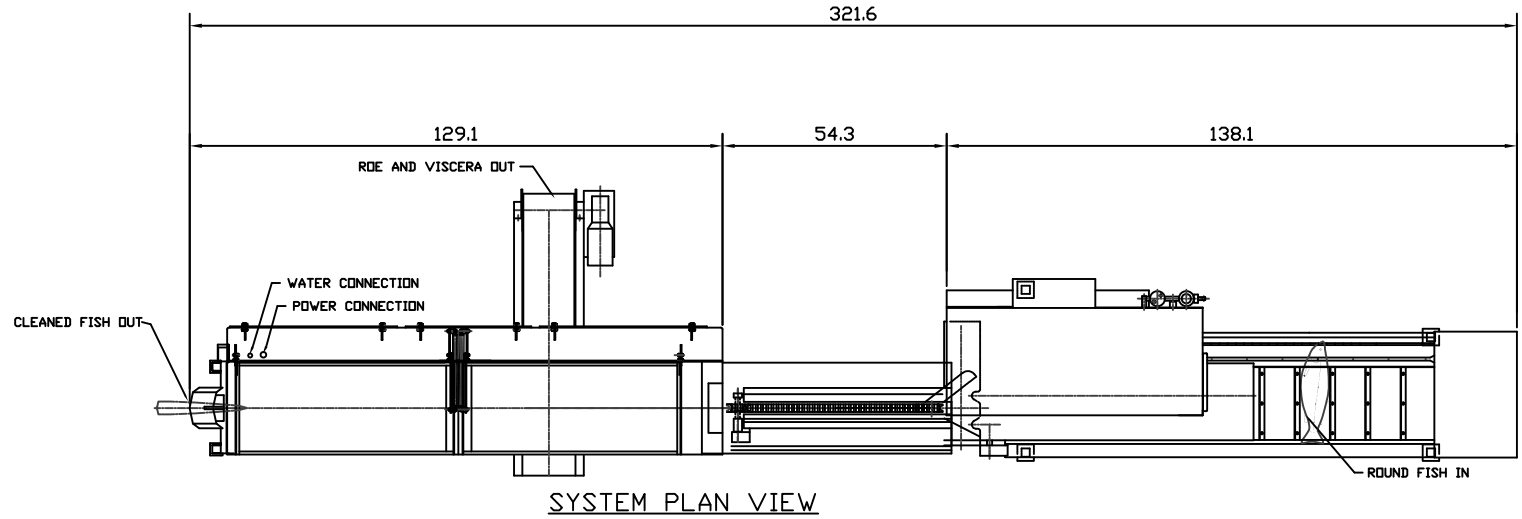


#644 GUTTER ELEVATION



#225 HEADER ELEVATION





SECTION AT EGG CONVEYOR

