



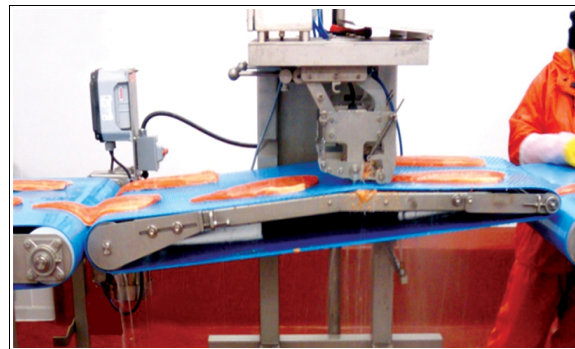
## #659F PINBONER DOUBLE LANE



**PULLS THE BONES THE OTHERS MISS! - INCLUDING FRESH COHO SALMON!**

### FEATURES:

- Dual lane
- Smooth Spiral pinch roll
- Pulling angle adjustable
- Bent conveyor exposes pinbones for easy pulling
- All stainless ball bearings
- Washdown duty motors
- All motors variable frequency controlled
- Easy, calibrated, simple adjustments
- Easily moved with pallet jack or forklift
- Self contained
- Pulls bones off Salmon fillet (1 to 16 lbs)
- Up to 30 fillets per minute
- Minimum damage to fillet
- Spiral pulling drum for smooth operation
- Automatic pressure control
- Easily cleaned
- All components designed for production fish processing



### UTILITIES:

- Electric: 220vac, 3ph, 2KW
- Air: Clean, Dry, 90-100 psig minutes
- Water: Filtered, 1-2gpm, 50 psig

### UTILITIES:

- Electric: 220vac, 3ph, 2KW
- Air: Clean, Dry, 90-100 psig minutes
- Water: Filtered, 1-2gpm, 50 psig

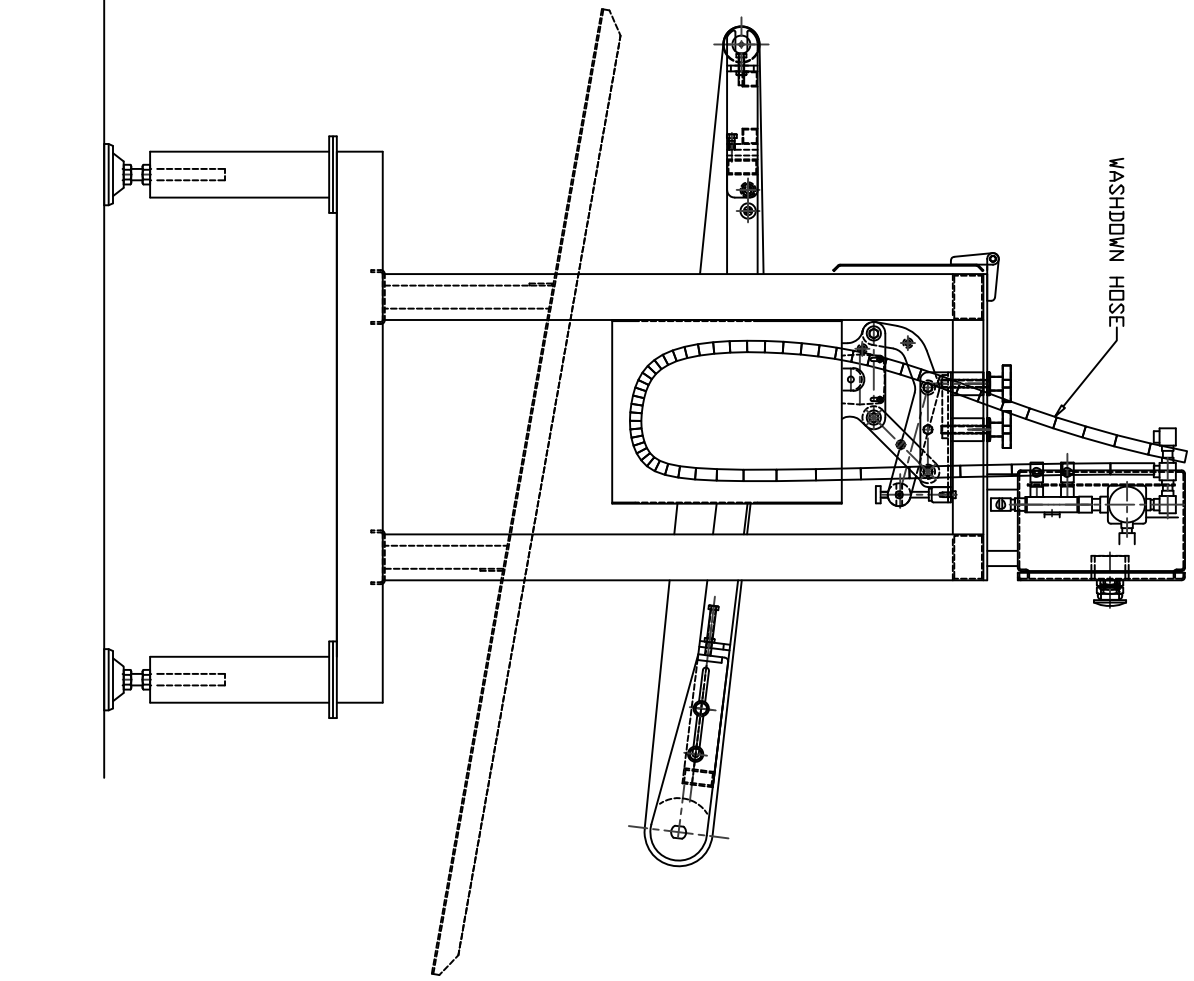
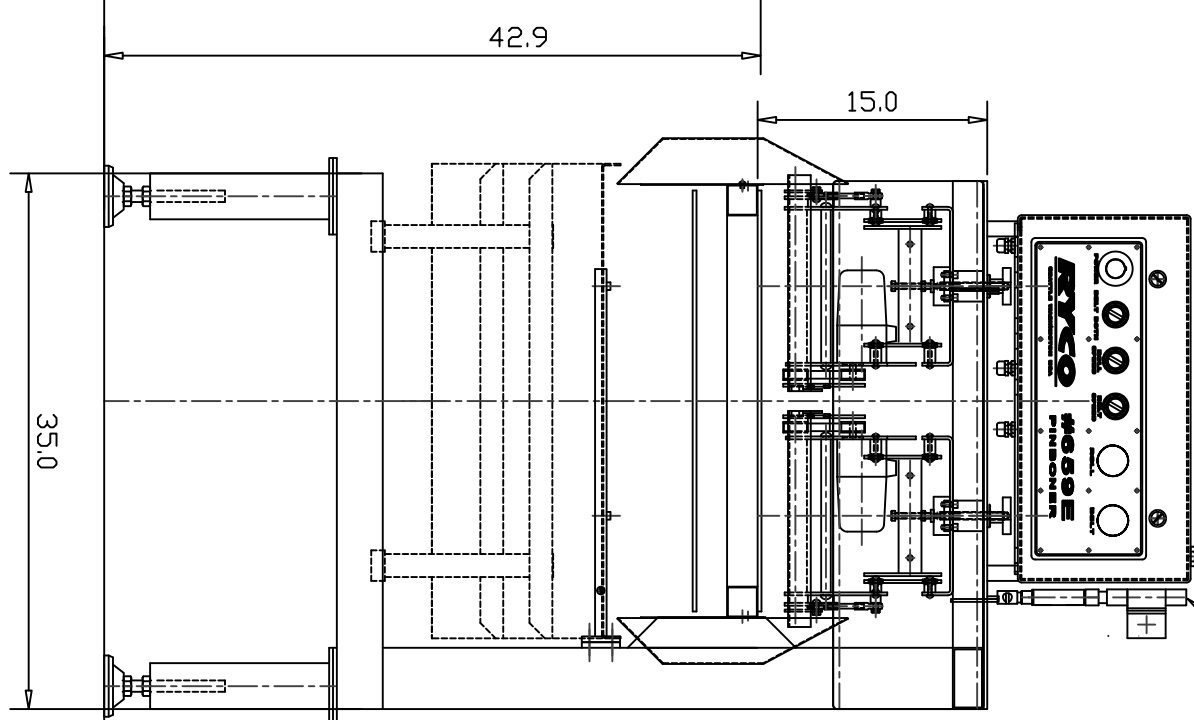
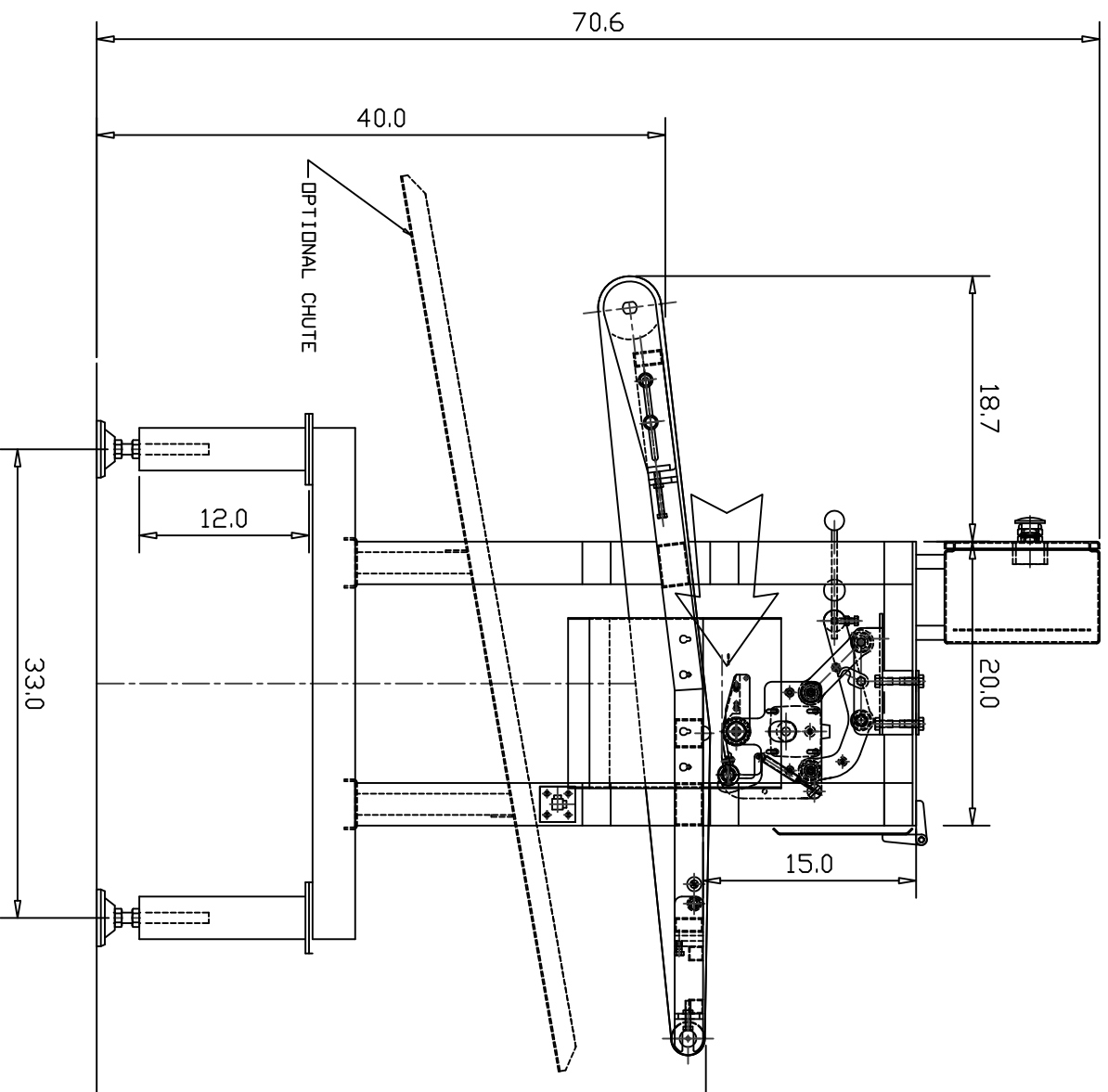
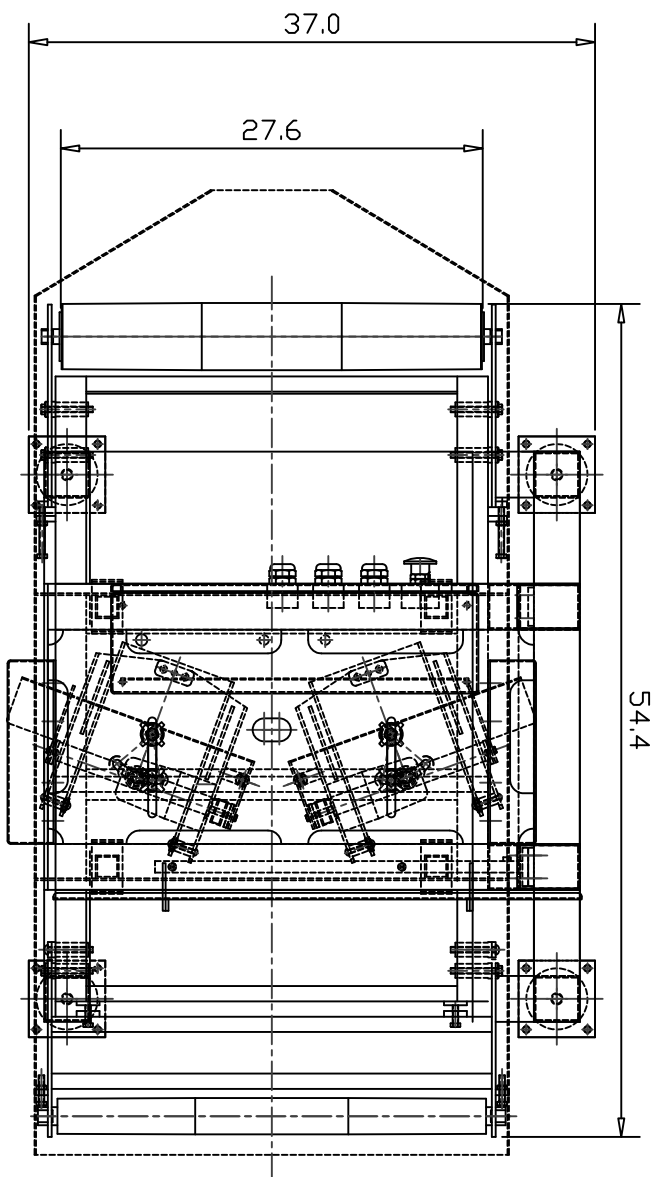
SPECIFICATIONS MAY CHANGE – CONTACT RYCO FOR SPECIFIC APPLICATIONS

OVERLEAF: D4542-A1

Address: 6810 220<sup>th</sup> Street SW  
Mountlake Terrace, WA 98043 – USA

Phone #: 425-744-0444  
Fax #: 425-673-2666

Web: [rycous.com](http://rycous.com)  
E-mail: [sales@rycous.com](mailto:sales@rycous.com)



D4542-A1 100521

6.5

RYCO EQUIPMENT  
SEATTLE WASHINGTON

#659E-2 PINBONE MACHINE

ARRANGEMENT