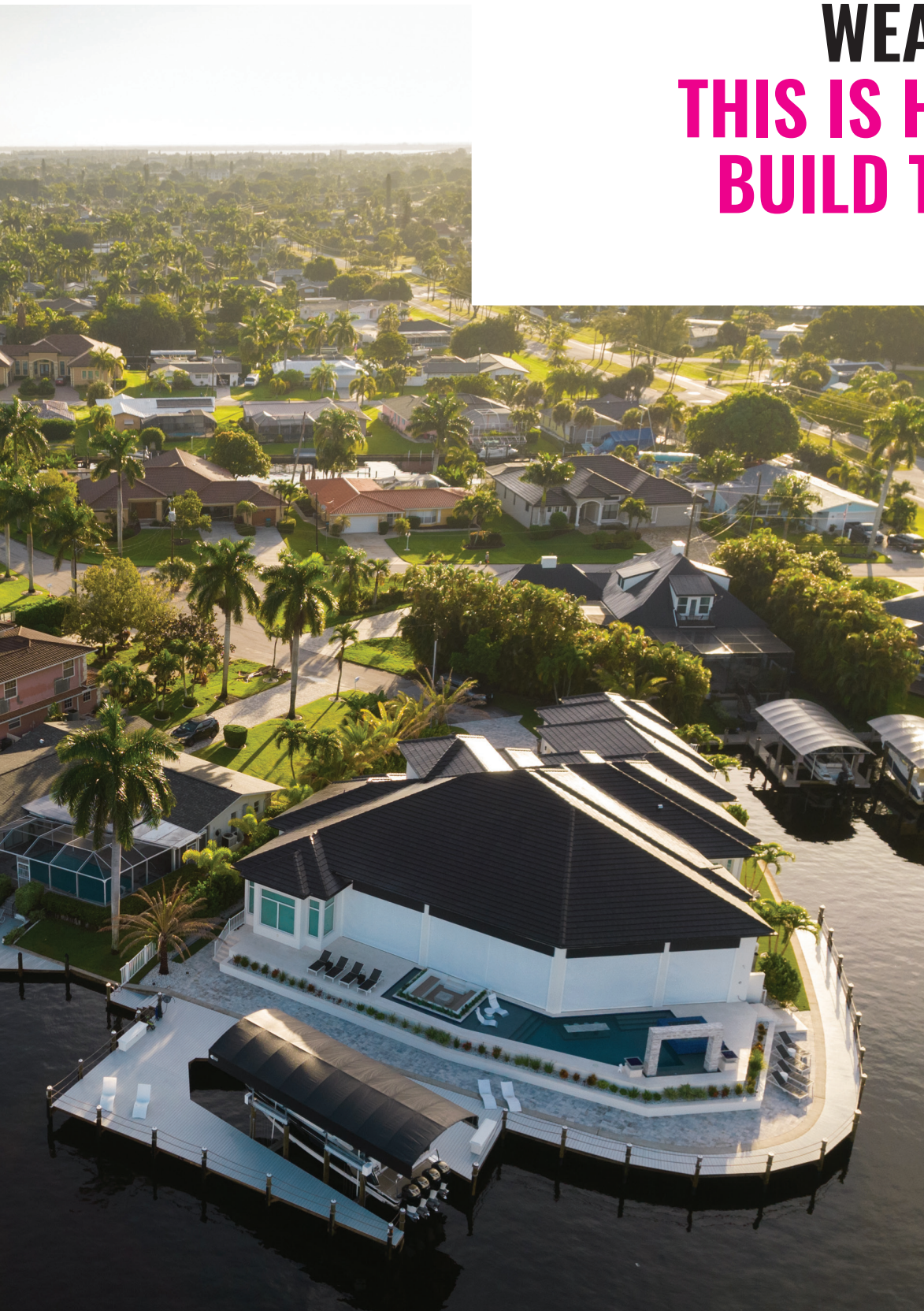




WEARDECK™

THIS IS HOW WE BUILD TO LAST



HOW WE BUILD NOW™

Product Data Sheet | **WEARDECK™** | September 2022

WEARDECK™ GLAS-POWERED™ LUMBER

STRUCTURAL. MORE DURABLE. HEAT-REFLECTIVE.

Designed around our Advantex® Fiberglas™ reinforcement technology, WEARDECK™ combines strength, durability, and comfort, enabling you to spend less time worrying about maintenance, and a lifetime enjoying construction that stands up to the elements.

- GLAS-POWERED™ by Owens Corning Advantex® Fiberglas™
- Wood-free Composite Lumber
- Rated for ground contact and underwater installation
- Limited lifetime warranty – Residential applications
- 25-year limited warranty – Commercial applications

PRODUCT BENEFITS



STRUCTURAL¹

- Spans 24 inches on center
- High live load ratings
- Applicable for structural applications

UP TO **2.7x** STRONGER



MORE DURABLE²

- Rated for ground contact and underwater installation
- Protects against water and the elements
- Resists mold, mildew, pests, stains, and fading
- Includes 25-year UV protection pack

4-10x LESS EXPANSION & CONTRACTION



SAFE & COMFORTABLE

- Heat-reflective technology
- Splinter-free
- Slip-resistant design

DESIGNED TO **REDUCE HEAT ABSORPTION**



EASY TO INSTALL & MAINTAIN

- Installs like wood
- Easy to carry and move
- Requires less understructure for faster, more affordable installation
- Cleans easily with soap and water, or a pressure washer

LOWER TOTAL COST OVER THE YEARS

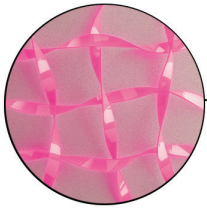


THIS IS
HOW WE
BUILD STRONGER



DISCOVER THE GLAS-POWERED™ LUMBER

HDPE¹ + FIBERGLAS™



¹High-Density Polyethylene

Unlike other traditional boards, WEARDECK™ is a **GLAS-POWERED™** lumber that delivers strength and durability from the inside out.

Its enhanced wood-free design is reinforced with the Owens Corning Advantex® Fiberglas™ technology. This powerful ingredient ensures that WEARDECK™ holds up exceptionally well under high live loads – with durability that lasts a lifetime.

| ATTRIBUTES | WEARDECK™ | OTHER HDPE BOARDS | OTHER COMPOSITE BOARDS | PVC |
|----------------------------------|----------------------|---------------------|------------------------|------------------|
| Fiber/Reinforcement | Advantex® Fiberglas™ | × | Wood Fibers | × |
| Structural | ✓ | × | × | × |
| Strength | 2.7x Stronger | × | × | × |
| Span | 24" o.c. | 16" o.c. | 16" o.c. | 16" o.c. |
| Thermal Expansion | 1/32" | 4–10x More Movement | 6–8x More Movement | 6x More Movement |
| Underwater & Ground Installation | ✓ | ✓ | × | × |
| Heat-Reflective Technology | ✓ | × | × | × |
| Warranty | Limited Lifetime | Limited Lifetime | 25 Years | Limited Lifetime |

The WEARDECK™ Composite Lumber performance data generated through ASTM testing method using 5/4 x 6", 2 x 8" and 2 x 10" profiles. Other HDPE, composite, and PVC boards' comparative data are the average performance based on public data from equivalent products. Thermal expansion performance data generated through ASTM D696 testing method using 5/4 x 6" profiles. Absolute performance data, design input, and span design table available upon request.

COLORS



Coollest

Barefoot colors & heat-reflective technology

Cooler

Heat-reflective technology

Cool

Heat-reflective technology

Black color available for structural profiles. Product samples available upon request. Other special colors available. Minimum order quantities may apply.

Actual product colors may vary due to photographic lighting sources or your screen settings.

STANDARD PROFILES & PACKAGING

All 8 standard profiles have a square-edged design.



5/4" x 6"

Spans 24" on Center

Standard Lengths: 12', 16', 20'
 Custom Lengths: Up to 28'
 Woodgrain: One Side
 Colors Available: All
 Common Uses: Decking, Railing



2" x 4"

Spans 24" on Center

Standard Lengths: 16', 20'
 Custom Lengths: Not Available
 Woodgrain: Both Sides
 Colors Available: All
 Common Uses: Railing, Finishing Touches



5/4" x 8"

Spans 24" on Center

Standard Lengths: 12', 16', 20'
 Custom Lengths: Up to 28'
 Woodgrain: One Side
 Colors Available: All
 Common Uses: Decking, Railing



2" x 6"

Spans 24" on Center

Standard Lengths: 12', 16', 20'
 Custom Lengths: Up to 28'
 Woodgrain: One Side
 Colors Available: All
 Common Uses: Decking, Railing, Understructure



1/2" x 6"

Standard Lengths: 18'
 Custom Lengths: Not Available
 Woodgrain: Both Sides
 Colors Available: All
 Common Uses: Fencing, Trim, Fascia, Finishing Touches



2" x 8"

Spans 24" on Center | Rated for Understructure

Standard Lengths: 12', 16', 20'
 Custom Lengths: Not Available
 Woodgrain: Both Sides
 Colors Available: All colors at 12' and 16'; White, Cedar, and Saddle at 20'
 Common Uses: Decking, Railing, Understructure



1/2" x 10"

Standard Lengths: 12'
 Custom Lengths: Not Available
 Woodgrain: One Side
 Colors Available: All
 Common Uses: Siding, Trim, Fascia, Finishing Touches



2" x 10"

Spans 24" on Center | Rated for Understructure

Standard Lengths: 12', 20'
 Custom Lengths: Not Available
 Woodgrain: Both Sides
 Colors Available: All colors at 12'; White, Cedar, and Saddle at 20'
 Common Uses: Railing, Understructure

| PROFILE (IN) | ACTUAL DIMENSION (IN) | LENGTH | | | | WEIGHT | NO. OF BOARDS PER BUNDLE |
|------------------------|-----------------------|---------------------|----------|----------|-----------|------------|--------------------------|
| | | 12' | 16' | 18' | 20' | | |
| | | WEIGHT (PER BUNDLE) | | | | | |
| 5/4" x 6" | 1.02" x 5.5" | 1,398 lb | 1,864 lb | | 2,330lb | 1.82 lb/ft | 64 |
| 5/4" x 8" | 1.02" x 7.25" | 1,692 lb | 2,256lb | | 2,820 lb | 2.35 lb/ft | 60 |
| 2" x 4" | 1.5" x 3.5" | | 2,352 lb | | 2,940 lb | 1.75 lb/ft | 84 |
| 2" x 6" Deck Board* | 1.35" x 5.5" | 1,805 lb | 2,406 lb | | 3,008 lb | 2.35 lb/ft | 64 |
| 2" x 6" | 1.5" x 5.5" | 2,074 lb | 2,765 lb | | 3,456 lb | 2.70 lb/ft | 64 |
| 2" x 8" | 1.5" x 7.5" | 2,016 lb | 2,688lb | | 3,360 lb | 4.00 lb/ft | 42 |
| 2" x 10" | 1.5" x 9.25" | 2,037 lb | 2,716 lb | | 3,395. lb | 4.85 lb/ft | 35 |
| 1/2" x 6" | 0.44" x 5.5" | | | 3,168 lb | | 1.10 lb/ft | 160 |
| 1/2" x 10" | 0.44" x 9.38" | 1,848 lb | | | | 1.75 lb/ft | 88 |
| | PALLET WEIGHT | 80 lb | 100 lb | 120 lb | 120 lb | | |

Custom lengths may be available upon request. Minimum order quantities may apply.

* Our 2x6 Deck Board is not intended for structural use

For the most up to date product information, visit <http://www.owenscorning.com/weardeck>

WEARDECK™ COMPOSITE LUMBER IN ACTION

Across a range of applications – municipal, commercial, and residential – WEARDECK™ delivers outstanding strength that’s easy to maintain and looks incredible for years to come.



Conch Inn Resort & Marina

Marsh Harbour, Bahamas

Application: Understructure, Decking

After Hurricane Dorian destroyed the marina in 2019, the Conch Inn opted for a wood-free project featuring Barefoot Gray WEARDECK™ and synthetic pilings.



North Ocean Blvd. Boardwalk

Myrtle Beach, South Carolina

East of Hilton Grand Vacations Club Ocean Enclave

Application: Decking

Heat-reflective Gray WEARDECK™ stays cool for barefoot beachgoers and stands up against heavy foot traffic.



Frankie's Fun Park

North Charleston, South Carolina

Application: Decking

Frankie's installed Saddle WEARDECK™ bridges along its miniature golf course for a durable, low-maintenance decking solution.



Residential Pool Deck

North Captiva Island, Florida

Application: Decking

Weatherwood WEARDECK™ was the ideal choice for these homeowners, protecting against constant exposure to sun and water while matching their décor.



Residential Dock

Lake Howard in Winter Haven, Florida

Application: Understructure, Decking, Seating, Fascia

Featuring only wood-free building materials, this private dock combines Barefoot Gray, Gray, and White WEARDECK™ for a sleek look that will last a lifetime.



Residential Deck

Savannah, Georgia

Application: Decking, Fascia

To create the ultimate outdoor living space, the homeowners chose Sand WEARDECK™ across their seating, dining, and kitchen areas.

With WEARDECK™ Composite Lumber, the building possibilities are truly endless – from decking to structural lumber, railing systems, and more.

Local standards and codes may vary.

THIS IS
HOW WE
BUILD NOW™



PEOPLE ARE TALKING ABOUT WEARDECK™

"I've been building decks and docks for over 20 years, and WEARDECK™ is the best Composite Lumber I've used. It's easy to work with, it's structural, and it doesn't shrink and expand like others!"

Daniel S.

Overbeck Marine Construction, Inc.

"We have been using WEARDECK™ for years. It's the best decking choice in the Marine Construction industry. It's durable, aesthetically pleasing, versatile, and so easy to maintain!"

Brandon T.

Anchorage Marine

"I replaced a large deck at my lake house with WEARDECK™. Now, my granddaughters can jump rope barefoot... no splinters, slip-resistant, and it never gets too hot in direct sunlight!"

Mike N.

Homeowner

SUSTAINABILITY IT ALL ADDS UP TO MAKE A DIFFERENCE

A sustainable future is the whole world's responsibility. At Owens Corning, it's our mission. Our products are designed and manufactured with sustainability in mind, and WEARDECK™ Composite Lumber is no exception. WEARDECK™ Composite Lumber helps you build things that will remain strong for a lifetime, drastically reducing the lumber and deck boards that would otherwise end up in the landfill. It all adds up to a world of difference.

Learn more: [owenscorning.com/sustainability](https://www.owenscorning.com/sustainability)

Our 2030 Goals



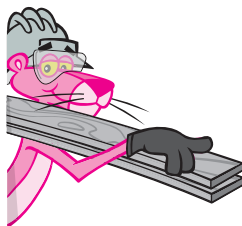
Reduce Greenhouse Gas Emissions by half



Switch to 100% Renewable Electricity



Send Zero Waste to Landfill by cutting in half the amount of waste we generate and recycling the rest



Owens Corning Composite Materials, LLC

One Owens Corning Parkway
Toledo, OH 43659 USA
352-414-7778
info-weardeck@owenscorning.com

HOW WE BUILD NOW™

<https://www.owenscorning.com/weardeck>

This information and data contained herein is offered solely as a guide in the selection of product. We believe this information to be reliable but do not guarantee its applicability to the user's process or assume any responsibility or liability arising out of its use or performance. The user agrees to be responsible for thoroughly testing any application of the product to determine its suitability. Because of numerous factors affecting results, we make no warranty of any kind, express or implied, including those of merchantability and fitness for a particular purpose. Statements in this publication shall not be construed as representations or warranties or as inducements to infringe on any patent or violate any law, safety code, or insurance regulation. We reserve the right to modify this document without prior notice.

Pub. No. 10025740. September 2022. THE PINK PANTHER™ & © 1964–2022 Metro-Goldwyn-Mayer Studios Inc. All Rights Reserved. © 2022 Owens Corning. All Rights Reserved.