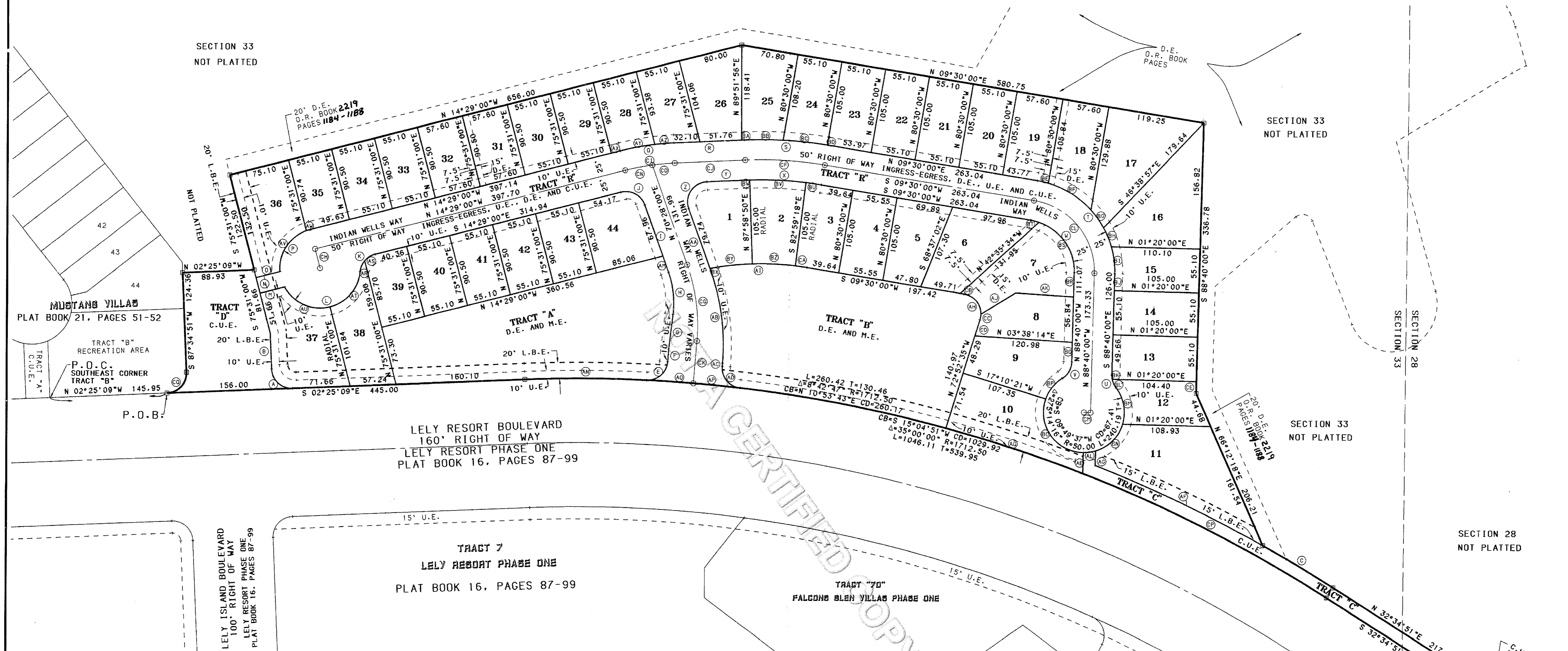


# INDIAN WELLS GOLF VILLAS

A SUBDIVISION OF PART OF SECTION 28 AND SECTION 33,  
TOWNSHIP 50 SOUTH, RANGE 26 EAST, COLLIER COUNTY, FLORIDA.



**DATA**

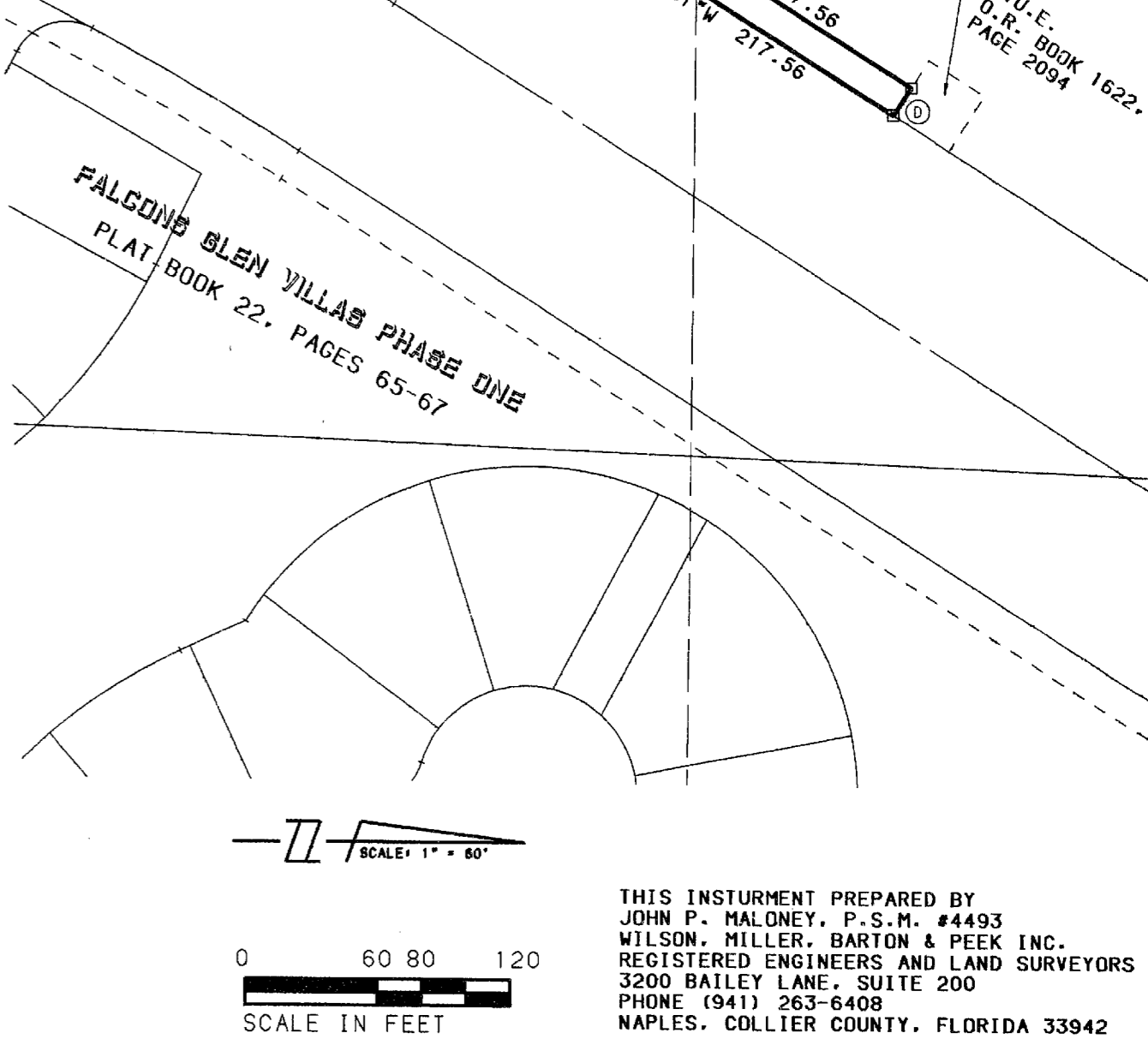
POINT	DELTA/BEARING	RADIUS	LEN./DIST.	TANGENT	CHORD BEARING	CHORD DIST.
A	90°00'00"	25.00	39.27	25.00	S 42°34'51"W	35.36
B	S 87°34'51"W		44.51			
C	3°21'39"	1727.50	101.33	50.68	N 30°54'01"E	101.32
D	S 57°25'09"E		15.00			
E	88°03'15"	25.00	38.42	24.17	N 41°22'49"W	34.75
F	N 85°24'26"W		16.30			
G	N 83°08'37"W		42.84			
H	26°23'23"	116.00	53.43	27.20	S 83°39'41"W	52.96
I	S 70°28'00"W		89.51			
J	84°57'00"	25.00	37.07	22.89	S 27°59'30"W	33.76
K	70°31'34"	25.00	30.77	17.68	S 49°44'47"E	28.87
L	146°38'09"	50.00	127.96	166.85	S 11°41'30"E	95.79
M	S 14°29'00"E		31.46			
N	S 75°31'00"W		20.00			
O	N 14°29'00"W		30.64			
P	81°26'44"	50.00	71.07	43.04	N 54°33'27"W	65.24
Q	11°52'32"	325.00	67.36	33.80	N 08°32'44"W	67.24
R	N 02°36'28"W		87.33			
S	12°06'28"	495.00	104.60	52.50	N 03°26'46"E	104.41
T	81°50'00"	115.00	164.25	99.67	N 50°25'00"E	150.64
U	39°07'31"	25.00	17.07	8.88	N 71°46'15"E	16.74
V	58°06'45"	25.00	24.48	13.32	N 60°36'38"W	23.52
W	81°50'00"	65.00	92.84	56.34	S 50°25'00"W	85.14
X	12°06'28"	445.00	94.04	47.19	S 03°26'46"W	93.86
Y	S 02°36'28"E		48.42			
Z	106°55'32"	25.00	46.66	33.74	S 56°04'14"E	40.17
AA	N 70°28'00"E		83.22			
AB	24°07'34"	277.00	116.64	59.20	N 82°31'47"E	115.78
AC	S 85°24'26"E		3.76			
AD	88°03'14"	25.00	38.42	24.16	N 50°33'57"E	34.75
AE	S 88°40'00"E		26.13			
AF	7°38'11"	1727.50	230.24	115.29	S 25°24'06"W	230.07
AG	N 88°40'00"W		18.16			

**DATA**

POINT	DELTA/BEARING	RADIUS	LEN./DIST.	TANGENT	CHORD BEARING	CHORD DIST.
AH	97°37'25"	25.00	42.60	28.57	S 58°18'42"W	37.63
AI	20°24'55"	340.00	121.15	61.22	S 00°42'28"E	120.51
AJ	N 32°06'45"W		50.71			
AK	N 03°38'14"E		71.93			
AL	17°29'50"	50.00	15.27	7.69	S 08°11'51"E	15.21
AM	N 70°28'00"E		21.54			
AN	5°03'58"	1712.50	151.42	75.76	N 00°06'50"E	151.37
AO	1°56'45"	1712.50	58.16	29.08	N 03°37'12"E	58.16
AP	1°56'46"	1712.50	58.17	29.09	N 05°33'57"E	58.16
AQ	5°58'56"	1712.50	178.80	89.48	N 18°14'35"E	178.72
AR	34°24'41"	25.00	15.01	7.74	N 67°48'14"W	14.79
AS	36°06'53"	25.00	15.76	8.15	N 32°32'27"W	15.50
AT	70°31'34"	50.00	61.55	35.35	S 49°44'47"E	57.73
AU	76°06'35"	50.00	66.42	39.14	S 23°34'17"W	61.64
AV	75°10'25"	50.00	65.60	38.49	N 57°41'36"W	61.00
AW	6°16'19"	50.00	5.47	2.74	N 16°58'15"W	5.47
AX	N 14°29'00"W		11.90			
AY	7°38'17"	325.00	43.33	21.69	N 10°39'52"W	43.29
AZ	4°14'15"	325.00	24.04	12.02	N 04°43'35"W	24.03
BA	N 02°36'28"W		3.46			
BB	5°35'08"	495.00	48.26	24.15	N 00°11'06"E	48.24
BC	6°23'31"	495.00	55.22	27.64	N 06°10'26"E	55.19
BD	0°07'49"	495.00	1.13	0.56	N 09°26'06"E	1.13
BE	6°54'33"	115.00	13.87	6.94	N 12°57'16"E	13.86
BF	31°29'31"	115.00	63.21	32.42	N 32°09'18"E	62.42
BG	13°35'39"	115.00	27.29	13.71	N 54°41'53"E	27.22
BH	12°42'57"	115.00	25.52	12.81	N 67°51'11"E	25.47
BI	17°07'20"	115.00	34.37	17.31	N 82°46'20"E	34.24
BJ	S 88°40'00"E		21.24			
BK	12°34'29"	25.00	5.49	2.75	N 85°02'45"E	5.48
BL	26°33'02"	25.00	11.58	5.90	N 65°29'00"E	11.48
BM	54°27'09"	50.00	47.52	25.73	N 79°26'04"E	45.75
BN	56°23'36"	50.00	49.21	26.81	S 45°08'34"E	47.25

**DATA**

POINT	DELTA/BEARING	RADIUS	LEN./DIST.	TANGENT	CHORD BEARING	CHORD DIST.
BO	108°42'54"	50.00	94.87	69.73	S 54°54'31"W	81.27
BP	38°10'47"	50.00	33.32	17.30	N 51°38'39"W	32.71
BQ	N 88°40'00"W		24.04			
BR	N 88°40'00"W		30.19			
BS	72°20'20"	65.00	82.07	47.52	S 55°09'50"W	76.72
BT	9°29'40"	65.00	10.77	5.40	S 14°14'50"W	10.76
BU	2°29'18"	445.00	19.33	9.66	S 08°15'21"W	19.32
BV	9°01'52"	445.00	70.14	35.14	S 02°29'46"W	70.07
BW	0°35'18"	445.00	4.57	2.28	S 02°18'49"E	4.57
BX	N 70°28'00"E		3.47			
BY	8°53'45"	340.00	52.79	26.45	N 06°28'03"W	52.74
BZ	9°01'52"	340.00	53.59	26.85	N 02°29'46"E	53.54
CA	2°29'18"	340.00	14.77	7.38	N 08°15'21"E	14.76
CB	N 09°30'00"E		4.73			
CC	15°15'16"	25.00	6.66	3.35	S 80°30'13"E	6.64
CD	S 72°52'35"E		21.14			
CE	N 88°40'00"W		14.65			
CF	12°06'28"	470.00	99.32	49.85	S 03°26'46"W	99.14
CG	24°07'34"	230.00	96.85	49.15	S 82°31'47"W	96.13
CH	N 75°31'00"E		25.00			
CI	11°52'32"	300.00	62.18	31.20	S 08°32'44"E	62.07
CJ	S 02°36'28"E		87.33			
CK	S 85°24'26"E		52.55			
CL	81°50'00"	90.00	128.54	78.01	S 50°25'00"W	117.89
CM	S 01°20'00"W		8.18			
CN	6°29'12"	300.00	33.96	17.00	N 11°14'24"W	33.95
CO	5°23'20"	300.00	28.22	14.12	N 05°18'08"W	28.21
CP	11°20'48"	1712.50	339.14	170.13	N 26°54'27"E	338.58
CQ	90°00'00"	25.00	39.27	25.00	N 47°25'09"W	35.36



SCALE IN FEET  
0 60 80 120

THIS INSTRUMENT PREPARED BY  
JOHN P. MALONEY, P.S.M. #4493  
WILSON, MILLER, BARTON & PEEK INC.  
REGISTERED ENGINEERS AND LAND SURVEYORS  
3200 BAILEY LANE, SUITE 200  
NAPLES, FLORIDA 33942  
PHONE: (941) 263-6408