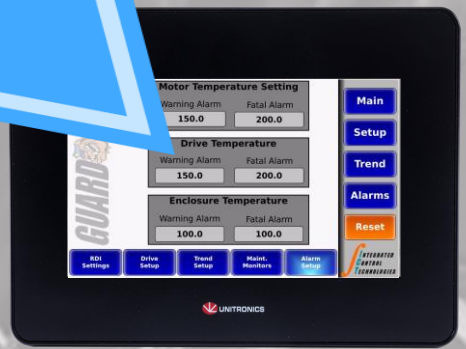


GUARD DOG



You are not really protected unless you have a Guard Dog!

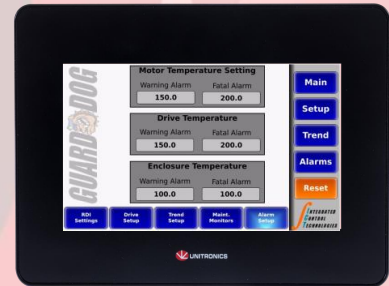
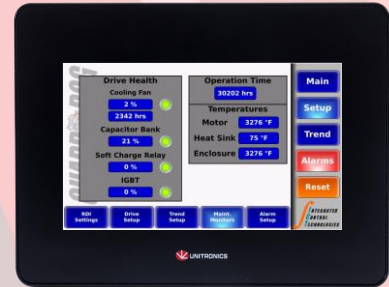
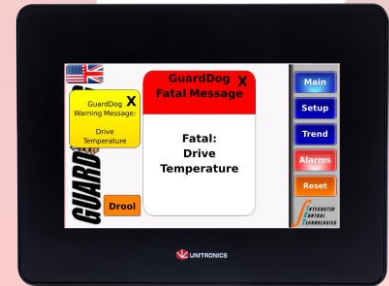


The "Extruder Guard Dog" is an innovative product that creates a new way of monitoring and protecting your extruder. This product when combined with the ACPAK and the Reliance RPMAC Extruder Duty Motor offers the following capabilities.



FEATURES

- **Extruder Speed and Load Monitoring:** Monitors Motor Amps and Extruder Speed that can be configured as screw speed with warning settings
- **Trending:** Speed and Load Trending of the Extruder Drive
- **Screw Break Prevention:** Starts the extruder at zero speed and accelerates the motor slowly
- **Screw Wear Monitor:** Monitors the revolutions of the screw with custom warning settings
- **Cold Zone Warning:** When starting the extruder, it warns the operator to confirm that all the barrel zones are at temperature prior to starting
- **Drool Speed Button:** Preset drool speed that makes start-up simple
- **Motor Temperature Monitor:** Monitors the temperature of the motor with custom settings for warning and shutdown
- **Monitors ACPAK Temperature:** Monitors the temperature inside the ACPAK with custom settings for warning and shutdown
- **Monitors the AC Drive Temperature:** Monitors the temperature of the heat sink with custom settings for warning and shutdown
- **Monitors Drive Health:** Monitors the life of components of the AC Drive
- **Drive Fault Log:** Monitors the last 100 faults of the AC Drive
- **Remote Monitoring:** Ethernet Connection allows users to view the screen using VNC from their computer
- **Email Warnings:** When connected to your network, an email can be sent warning of a potential problem
- **Vibration Warning:** Optional feature to detect excessive motor vibration



(972) 906-7445

www.integratedcontroltech.com