

OHIO CLAYS



From the "Buckeye State" here are our clays available in Ohio.



61020 Leyshon Dr
Byesville, OH 43723

Fun Facts



*Did you know that the red carnation is Ohio's official state flower?



The first traffic light was in Cleveland, Ohio.

8 US presidents were born in Ohio.

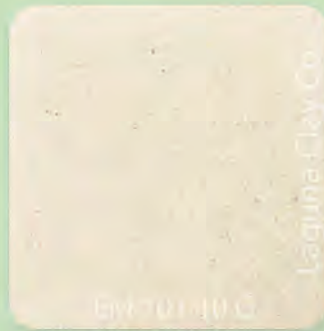
Ohio gets its name from the Iroquois word 'ohi-yo', which means "great river". Ohio has over 40,000 miles of waterways.

Ohio Low Fire Clays (Cone 06)



#10 - EM 100

Ideal for schools and beginners. Talc-free white firing clay, smooth, plastic, suitable for throwing and sculpture.



#10G - EM 101

Talc-free, white firing, grogged/plastic, suitable for throwing & sculpture. Medium grog added. *Lower shrinkage*



#10T - EM 103

A smooth, plastic, white body with a small percentage of talc to create an optimum glaze fit. Excellent for handbuilding.



#20 - EM 106

A smooth, plastic, terra cotta colored clay for wheel throwing and excellent for hand building as well. Fires to a rich terra cotta red.



#20G - EM 107

#20-G has the same properties as EM-106 Miller #20 with a fine grog added for slightly less shrinkage and improved workability.



White - EM 210

This is an all-purpose, smooth modeling clay. It is an excellent clay for beginning techniques such as coil and slab building. The white color makes it an ideal clay for use with low fire glazes.



Artist: Bryan Wilkerson @bryanwilkerson Clay Used: B Mix

Ohio Mid Fire Clays (Cone 5)



B-3 Brown - WC 391

Pliable clay with smooth grog. Great for wheel throwing and sculpture (use high gloss glaze when making dinnerware). Color comes from manganese/iron. Fires almost black.



B Mix - WC 401

B-Mix 5 offers the same characteristics enjoyed by our Cone 10 B-Mix. Its smooth, porcelain texture is a pleasure to throw and form, and it fires to a cream color in oxidation.



Speckled Buff - WC 403

Low in sand and grog content (20-48 mesh grog & 60 mesh sand), speckled buff is smooth textured. An excellent throwing body.



B Mix w Speckles - WC 408

Smooth, porcelainous stoneware that is very plastic and workable. Slow drying/ample compression on rims & bottoms is advisable. Cone 6 is not recommended.



B Mix w Grog - WC 436

A very fine 48 mesh grog makes for a more forgiving body with a slight texture and minimal speckling.



Frost 6 Porcelain - WC 437

An exceptionally white and translucent throwing porcelain for Cone 5-6. This clay takes time to master, but it is well worth it for the amazing results.



Red B Mix w Grog - WC 438

A medium sized 48 mesh grog version of our B Mix but in a warm orange brown color. Very forgiving during drying and good for forming larger sized objects.



#40 - WC 602

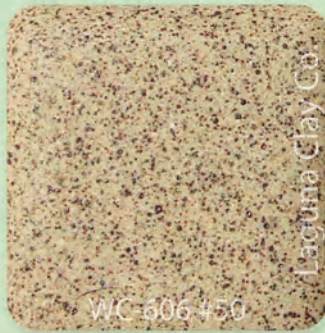
Dark buff firing clay. Versatile, medium textured throwing body.



WC-603 #45

#45 - WC 603

Buff stoneware for the production potter. Throwing properties are excellent, also works well in hand building and slab work. Fires slightly lighter than #40 buff.



WC-606 #50

#50 - WC 606

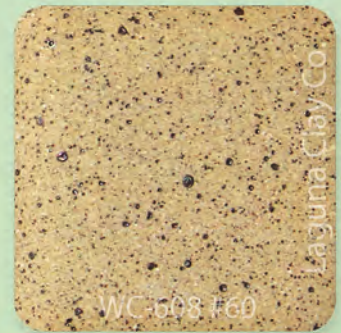
Light sand color with fine specks. Excellent cone 6 throwing body which enhances glaze colors & effects. The perfect stoneware look.



WC-607 #55

#55 - WC 607

Excellent off-white stoneware for wheel & functional work. Minor speckling. Neutral glazes are not altered by its ingredients allowing for purer glaze color.



WC-608 #60

#60 - WC 608

Stoneware clay with specks that bleed through the glaze, giving the appearance of iron burning through. Popular throwing clay for production potters who want to add the speck dimension to their ware.



WC-609 #65

#65 - WC 609

Smooth white stoneware, good for throwing and production of functional whiteware.



WC-610 #66

#66 - WC 610

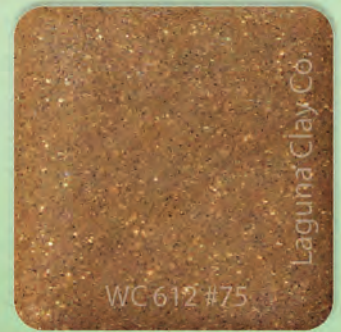
Same as #65 but includes sand, making it quite desirable for tile, slabs and hand building.



WC 611 #70

#70 - WC 611

A very plastic throwing clay, medium dark in color, featuring heavy speckling. Creates excellent glaze effects.

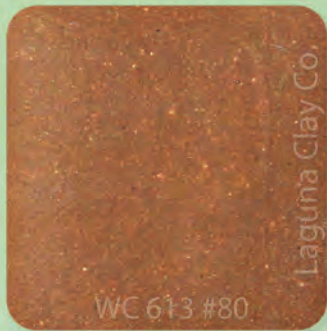


WC 612 #75

#75 - WC 612

A good wheel and hand building clay body, dark in fired color at Cone 6. Iron colorants in body enhance most glaze color developments.

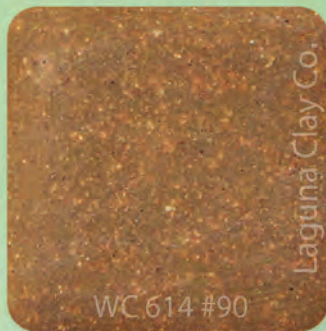
Ohio Mid Fire Clays cont'd (Cone 5)



WC 613 #80

#80 - WC 613

Similar to #40 but fires to red/brown in oxidation, very plastic for throwing.



WC 614 #90

#90 - WC 614

Formulated with fine grog and red art to obtain rich dark color. Good for outdoor pots as well as functional pottery and sculpture when fired to Cone 6.



#15 - WC 616

Translucent porcelain. An excellent grogged body for throwing thin pieces.



WC 617 #16

#16 Porcelain - WC 617

Grogged Cone 6 porcelain. Similar to #15 with more ball clay, making it less white, more plastic and forgiving. Additional silica reduces crazing in some glazes. Good for slab forming.

B-3 BROWN
WC 391



Azabache - LC 3

Rich toned black clay at cone 5. Really smooth throwing body for mid-scale work. With the color content of this clay, we recommend firing no hotter than cone 5. Glaze testing is encouraged.



Laguna Sculpture - LC 4

This clay body is similar to Soldate but with 20 mesh grog vs sand. Beautiful buff color and takes glazes well for large sculpture and slab work from cone 5-10.



Dark Horse - LC 5

A dark/black course cone 5 clay capable of being used for tile and larger sculptural works. Pieces up to 5 inches thick have been fired with no bloating issues. Testing glazes recommended.

Artist: Jonathan Yamakami @jonathan.yamakami
Clay Used: B-3 Brown *pictured in greenware state

Ohio High Fire Clays (Cone 10)



B Mix 10 - WC 379

A premier throwing clay that is easy to throw and form. Smooth porcelain texture. It is similar to porcelain but it throws like a dream.



B Mix w Sand - WC 380

The addition of 10% fine feldspathic sand allows for a body with some texture. Fires gray/white when reduced and off-white when oxidized, some speckling may occur.



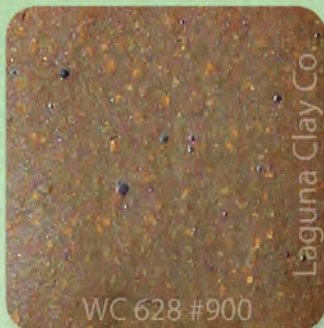
#510 - WC 618

A very popular white stoneware, #510 is a very plastic, smooth throwing clay with superior hand building and slab properties. Contains fine grog.



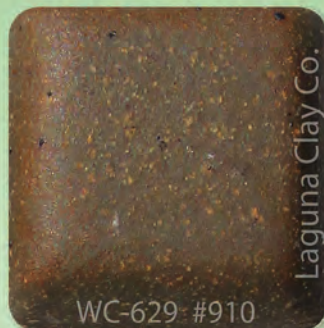
#850 - WC 627

An off white, typical light stoneware throwing clay. Medium texture for good tooth. Contains fire clay, no additional color.



#900 - WC 628

This is considered by many to be the best clay for production pottery. Ideal for those who Sgraffito, wax resist and want a finer texture to minimize picking. Great for planters, etc.



#910 - WC 629

This low sulfur body is less prone to bloating than most clays in Cone 10 reduction firings. You will appreciate minimal sulfur odor. Warm toast color in reduction. Similar properties to #900.



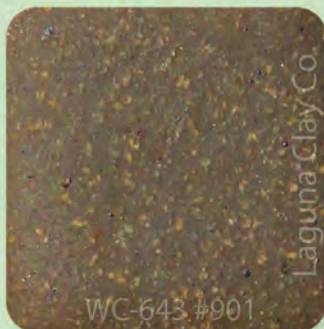
#550 - WC 631

Made primarily of English Grolleg. Contains plasticizers to make this the finest translucent porcelain available for throwing, making thin slab work and hand building.



#570 - WC 633

Grolleg porcelain. Similar to #550. A well accepted standard for grolleg clay bodies. Can be fired a little hotter than #550.



#901 - WC 643

A modification of WC-628 Miller #900. Fine sand is added to maximize stability in firing and drying.



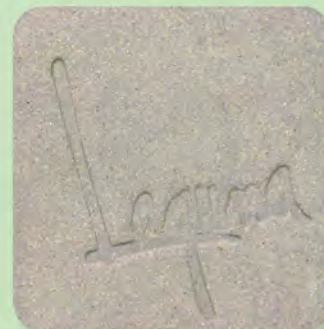
Soldate 60 - WC 843

Same formula as Soldate 30, but with finer 60 mesh sand. Texture is medium coarse with high sand content. Ideal choice for large thrown pieces and sculptural forms.



B Mix Paper w Grog - WC 886

Cone 10 B Mix clay with the addition of a very fine grog; provides a smooth fired texture and light speckling.



B Mix w Grog - WC 893

Cone 10 B-Mix clay with the addition of a very fine grog; provides a smooth fired texture and light speckling.



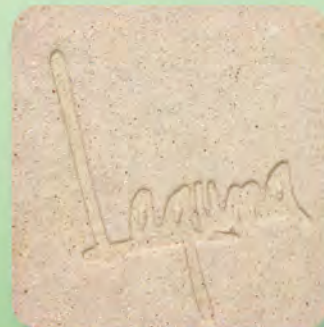
Frost 10 Porcelain - WC 896

An exceptionally white and translucent throwing porcelain for Cone 10.



B Mix Wood Fire - WC 899

A specially formulated version of B-mix body for wood/salt firing. Takes Salt & Soda well. Exhibits nice flashing characteristics in wood firings. Holds up well in Cone 12 atmospheric firings.



Max's Paper Clay - WC 953

Medium textured, low shrinkage body designed for large-scale hand-built sculpture and tile work. Contains a moderate amount of fine and medium mesh grog. ^06-10



Everest - LC 1

Designed with the intention of wood fire, salt and extreme applications along with beautiful opportunities for crystalline glazes. It has been tested in our tunnel kiln at cone 14 with no slumping. Superb plasticity, whiteness and throwing qualities make this clay amazing. Not translucent.

Ohio High Fire Clays cont'd (Cone 10)



Sable Black- LC 2

Lightly grogged with no sand and has shown to do really well with both hand built and thrown ceramic wares. Black clays can affect glazes so testing will be required.

Ohio Low Fire Casting Slips (Cone 06-04)



Miller Slip - NS 1

The East Coast standard of casting slips for slip casting low fire hobby ceramics. Fires white and is craze-free with most low fire glazes.

Ohio Mid Fire Casting Slips (Cone 5-8)



Dover - NS 4

A white Cone 6, all purpose stoneware casting slip body for slip casting.



Grits - NS 5

Stoneware Slip. Cone 6. This tan slip with specks produces a great sandstone stoneware.



Cool Blush NS 120

After slip casting and when fired to Cone 6; this self-supporting doll casting slip presents with a hint of pink.



Warm Blush - NS 121

This Ferro filtered casting slip is a little less pink and more "tan" than the Cool Blush Porcelain Casting Slip.



Desert Beige - NS 122

A color out of the Southwest, Desert Beige porcelain casting slip is the next small step away from Cool Blush and Warm Blush toward tan/light brown.



Warm Brown - NS 123

A medium, richly hued porcelain casting slip.



Antique White - NS 124

The Antique White porcelain casting slip offers more of a "cameo white" look than cool whites.



Very White - NS 125

A bright, cool white colored porcelain casting slip for slip casting; but not a "blue" white.



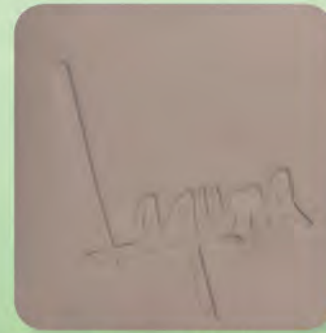
Sahara - NS 127

A soft, light, golden beige porcelain casting slip.



Cashew - NS 128

A darker and tanner version of the Desert Beige porcelain casting slip.



Mocha - NS 129

Lighter in color than the Warm Brown porcelain casting slip with a hint of pink.

Ohio High Fire Casting Slip (Cone 10)



500L - NS 8

A popular Cone 10 whiteware casting slip. Fires white in oxidation, gray in reduction.



Artist: Claire Gill @bluegillceramics
Clay Used: #550 WC 631

Ohio Raku Clays



#250 - WC 636

A smoother raku body than #200. Works well under the toughest conditions.



B Mix Paper w Grog - WC 886

Cone 10 B-Mix clay with the addition of a very fine grog; provides a smooth fired texture and light speckling.



Max's Paper Clay - WC 953

Medium textured, low shrinkage body designed for large-scale hand-built sculpture and tile work. Contains a moderate amount of fine and medium mesh grog. *06-10.



Artist: Gina Feddersen @isolabellastudio
Clay Used: #50 WC 606



Mexo Red - WC 640

Suitable for throwing, coiling & sculpting. Allow for some shrinkage. Air dries well. Store in an air-tight container until work is completed. Seal with a commercial water sealant to waterproof.



Mexo White - WC 641

Suitable for throwing, coiling & sculpting. Allow for some shrinkage. Air dries well. Store in an air-tight container until work is completed. Seal with a commercial water sealant to waterproof.



WED - EM 217

Specifically formulated to be smooth & slow drying for modeling. Primarily used by design studios and the entertainment industry for modeling, design, mock-up and tooling. Not formulated to be fired.



B Mix Wood Fire - WC 899

A specially formulated version of B-mix body for wood and salt firing. Takes Salt/Soda well. Exhibits nice flashing characteristics in wood firings. Holds up well in Cone 12 atmospheric firings.

Artist: Rachel Durham @rachelrdurham Clay Suggestion: #16 Porcelain WC 617



Artist: Logan Burn @dust_on_the_sill Clay Suggestion: Dark Brown WC 373



Artist: Nancy Armitage @formnfunc Clay Used: Electric Brown WC 866



Artist: Melissa Baca Clay Suggestion: SB Red WC 394



WED CLAY

Originally developed for use in sculpting Disney's animatronics models, WED (Walter E. Disney) clay is an extremely versatile water based clay with properties similar to many of today's most popular oil based clays. This clay has been specifically formulated to be a very smooth, slow drying clay for modeling, design, mock-ups and tooling. It is used primarily by design studios and the entertainment industry.

WED clay is not formulated to be fired.



WED EM 217



Characteristics:

Wet Color: Gray

Texture: Smooth

Penetrometer Target: 6

Avg. Shrinkage 2±%: 5%

Avg. Water Absorption 1±%: 10%

*WED clay is **water-based** and **sulfur-free** making it safe to use with silicones.

*Smooth and extremely pliable

*Dries slowly making it great for big projects that require timely details.



Artist: Brett F harvey @brett_f_harvey