

KHALEEJ ARABI ELEVATORS

+971- 0503190881



# FUJI GENERAL ELEVATOR

ESCALATOR  
MOVING WALK SERIES  
自动扶梯/人行道系列

通用电梯股份有限公司  
GENERAL ELEVATOR CO.,LTD.

# FUJI GENERAL ELEVATOR

世界通用 通用世界

我们精通的，不只是技术，还有您的心意；  
我们追赶的，不只是时间，还有分秒的舒适；  
我们承诺的，不只是安全，还有世界的平和。  
技术精，则世界畅通，服务佳，则世人皆用；  
因精而通，因信而用，通而致用，方为通用。  
通用电梯，让科技为人性服务，让世界“通用”起来，  
这不是野心，而是一种态度。

## GENERAL ELEVATOR IS POPULAR IN THE WORLD

We are good at high-tech and knowing what you need.  
We pursue time and comfortable travel at any time.  
We pledge safety and a peaceful world.  
Our high tech brings about smooth global transport. Our fine services are used by the public.  
GENERAL Elevator is proud of proficient skill and good reputation.  
High-tech of GENERAL Elevator serves vast human beings.  
GENERAL is popular in the world because of hardworking attitude instead of ambition.



扫描二维码播放  
通用电梯企业形象片

Scanning the two-dimension code  
to play the enterprise-image publicity  
video for GENERAL Elevator



## 自动扶梯——领先技术，让产品更趋安全、舒适、节能

Escalator

The leading technology make the product safer, more comfortable and energy-efficient

通用自动扶梯系列产品将独树一帜的现代科技与人性化需求相结合，以优良的性能，灵活的设计满足不同客户的需求，新型材料与先进制造技术的优先运用，使通用自动扶梯更趋完美、安全、舒适、节能。

The GENERAL escalator series products combines the unique modern technology with the humanistic needs, with its excellent performance and flexible design to meet the needs from various customers. The prior applications of new materials and advanced manufacturing technologies provide the GENERAL escalators with more perfection, safety, ease and energy-efficiency.

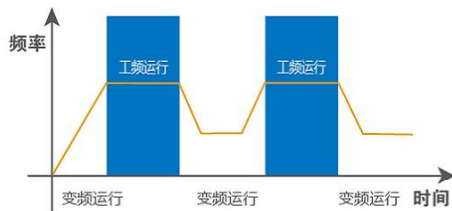


### 先进的技术性支持

变频技术与高精度斜齿轮减速驱动装置的完美结合，节能效果显著，性能更完美，运行更舒适。

The advanced technical support

The perfect combination between variable frequency technology and high precision bevel gear deceleration driving device, obvious energy-saving effect, more perfect performance and more comfortable operation.



### 运载更安全

金属桁架结构，紧凑、牢固，运载更安全。

Safer to carry

The metal truss structure with high precision, compact and secure, is safer for carrying.



### 匹配不同建筑物风格

扶手带和裙板材质、颜色多样，完美匹配建筑物风格，满足不同审美需求。

Matching different styles of architecture

The handrail and skirt plate, of multiple materials and colors, perfectly match different styles of architecture and meet the different aesthetic needs.

# 重载公交型自动扶梯 ——强大的运载能力， 专为公共交通量身定制

Heavy load and public transportation oriented automatic escalator—  
Excellent Carrying capacity,  
exclusively tailored for public transport

通用重载型公共交通系列自动扶梯是专为公共交通量身定制的重载型自动扶梯，引进顶级生产设备与制造工艺，充分应用新型材料，其优越的运行性能、强大的运载能力和领先的安全保障，能够充分满足人流量极大、运输时间较长的承载要求，为地铁、车站、机场等公共交通运输场所提供最佳解决方案。

The GENERAL heavy load and public transportation oriented automatic escalator is exclusively designed for public transport. It introduces the top manufacturing equipment and processes and makes full use of new materials. With the superior operating performance, strong carrying capacity as well as the leading security, this escalator can meet such requirements as enormous flow of people and long transit time and provide the optimal solutions for public transportation sites, such as subway stations, airports, etc..



## 先进的控制系统

先进的控制系统，扩展性更强，稳定性更高，故障检测功能更加细化，安全性能更高。

The advanced control system

The advanced control system brings the stronger expandability, higher stability, more detailed failure detection and higher security.



## 运载能力更强劲

涡轮斜齿轮技术的应用，保证了整机传动效率更高，能耗更低，驱动力更强。

Stronger carrying capacity

The application of the turbine helical gear technology ensures higher transmission efficiency, lower energy consumption and more powerful driving force of the whole set.



## 安全更有保障

单侧定位高精度U型导轨配上质感十足优质护板，细节中处处透露安全理念。

The enhanced safety

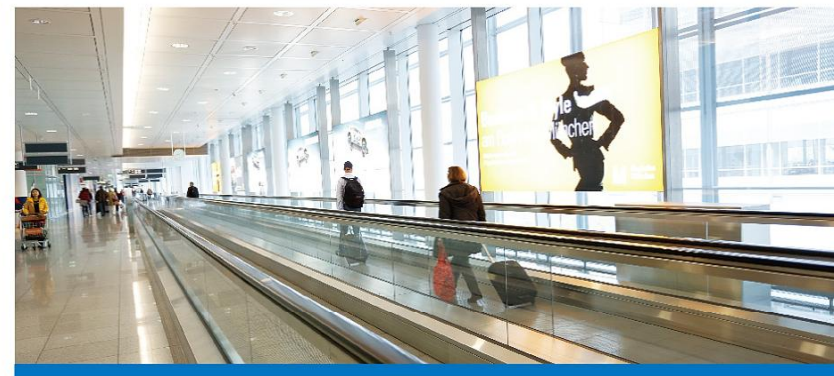
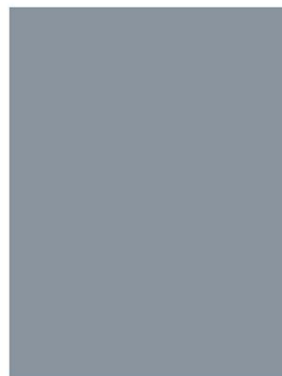
Unilateral positioning high precise U-shaped guide rails together with guard plates of high quality thoroughly demonstrates the safety philosophy.



# 自动人行道 ——科技与艺术的完美融合， 让城市运载畅通自如

Moving walk

The perfect integration of technology and art offers smooth carrying for the city



通用自动人行道系列产品引进先进的人行道制造技术，精确分析城市交通流量、建筑布局和乘载者需求，兼有乘坐实用功能与视觉装饰效果的人行道系列产品，完美融合了科技与艺术，让城市运载更畅通自如。

The GENENAL moving walk series products introduce the advanced pavement manufacturing technology to make an accurate analysis of urban traffic flow, building layout and passenger demand. This series product combines practical features with visual decorative effect, perfectly integrating the technology and art together, which makes urban delivery more smoothly.



高效运载

## 高效运载

安全轨道技术，采用科学的力学运算，保障电梯运行更平稳、高效。  
先进扶手驱动，将摩擦轮驱动和压辊驱动两种型式有机结合，提高驱动力。

### Efficient delivery

The safe track technology takes the advantage of scientific mechanical operation to secure the stability and efficiency of elevator operation.

The advanced handrail drive organically combines two types of drive-friction wheel drive and roller drive-together to improve the driving force.



安全设计

## 安全设计

人行道踏板表面防滑槽设计，让乘客体验更感安全舒适。  
先进的安全电路板对人行道安全保护装置进行实时监控，及时消除运行隐患，减少维护时间，从而确保乘客安全。

### Safety design

The anti-skid slot design on the pavement pedal surface enables the passengers to experience more security and ease.

The pavement safety protection device is monitored by the advanced safety circuit board to eliminate operation risks in time, reduce the maintenance time and ensure the safety of passengers.

# 部件配置

Parts configuration



### 1. 梯级链断裂保护装置 Step-chain breaking protector

当梯级链被过度拉伸或断裂时，自动扶梯（自动人行道）将自动停止运行。

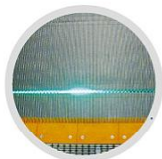
When the drive-chain has been over-stretched or it is broken, the escalator (moving walk) will be automatically stopped for running.



### 2. 紧急停止按钮 Emergency stop button

当按下该按钮时，自动扶梯（自动人行道）将停止运行。

When the button has been pressed down, the escalator (moving walk) will be stopped for running.



### 3. 梯级照明 Step illumination

扶梯上下端，梯级下部装有照明以提醒乘客注意安全。

Illumination exists in the upper and lower ends of the escalator, in the lower part of the step in order to remind the passengers of the security matters.



### 4. 梯级测速装置 Step speed detector

如果扶手带速度比梯级慢于一定百分比，自动扶梯（自动人行道）将停止运行。

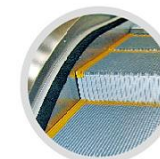
When the handrail speed versus step is slower than certain percentage, the escalator (moving walk) will be stopped for running.



### 5. 梯级（踏板）下陷保护装置 Step (tread) sunk protection device

当发现梯级有异常的弯曲时，自动扶梯（自动人行道）会在梯级进入梳齿板前停止运行。

When there is abnormal step bending, the escalator (moving walk) will be stopped for running before the step entering into the comb plate.



### 6. 围裙板刷 Skirt panel brush

在围裙板和梯级之间装有刷子使乘客的鞋子不会碰到围裙板。

The brush that has been installed between the skirt panel and the step will prevent the shoes of passengers from touching the skirt panel.



### 7. 紧急制动装置 Emergency brake device

当电力不足或任一安全装置动作时，制动装置将通过弹簧弹力作用使制动功能生效，使自动扶梯（自动人行道）停止运行。

When the electric force falls short of supply or it acts any of the safety device, the brake function goes into effect by the safety device through the spring resilience action, the escalator (moving walk) stopped for running accordingly.



### 8. 驱动链断裂保护 Drive-chain breaking protection

当驱动链被过度拉伸或断裂时，自动扶梯（自动人行道）将自动停止运行。

When the drive-chain has been over-stretched or it is broken, the escalator (moving walk) will automatically stop for running.

# 装饰部件配置

Decorative parts configuration

## 扶手带颜色 Handrail color



黑色  
Black



黑色带点白  
Black with a little white



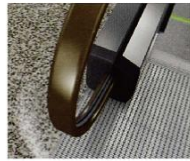
红色  
Red



蓝色  
Blue



绿色  
Green



褐色  
Bronze



浅褐色  
Light brown



灰色  
Gray

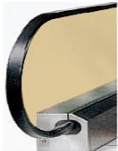
## 护壁板颜色 Baseboard color



无色透明(标配)  
Colorless transparent  
(standard)



灰色  
Gray



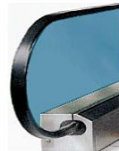
古铜色  
Bronze



黄色  
Yellow



红色  
Red

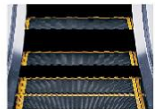


蓝色  
Blue

## 梯级 Step



银色铝  
Silver aluminum

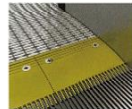


黑色不锈钢  
Black stainless steel

## 梳齿板 Comb plate



铝梳齿板  
Aluminum comb plate



黄色塑料  
Yellow plastic

# 功能表

Function table

## 标准功能

Standard Function

1. 缺相、错相保护 Lack of phase, error phase protection	如查发生缺相或错相, 自动扶梯(自动人行道)将自动停止。 If lack of phase or error phase has been checked out, the escalator (moving walk) will automatically stop the operation.
2. 马达超载保护 Motor over-load protection	电流超过额定电流的15%则扶梯自动停止运行。 When the current exceeds 15% of the current rating, the escalator will automatically stop the operation.
3. 电器回路保护 Electrical appliance loop protection	提供自动电路断开装置以保护自动扶梯(自动人行道)的电路和电源部件。 It offers the automatic circuit disconnecting device to protect the circuit and mains components of the escalator (moving walk).
4. 扶手带入口保护 Handrail inlet protection	当异物夹在扶手带入口时, 自动扶梯(自动人行道)会自动停止运行。 When some foreign substance has been clipped in the handrail inlet, the escalator (moving walk) will automatically stop the operation.
5. 梳齿板安全保护装置 Comb plate safety device	当异物被夹入梳齿时, 自动扶梯(自动人行道)将自动停止运行。 When some foreign substance has been clipped in or between the combs, the escalator (moving walk) will automatically stop the operation.
6. 梯级塌陷保护装置 Step sagging protection device	当发现梯级有异常的弯曲时, 自动扶梯(自动人行道)会在梯级进入梳齿板前停止运行。 When there is abnormal step bending, the escalator (moving walk) will stop the operation before the step entering into the comb plate.
7. 驱动链断裂保护 Broken drive-chain safety device	当驱动链被过度拉伸或断裂时, 自动扶梯(自动人行道)将自动停止运行。 When the drive-chain has been over-stretched or it is broken, the escalator (moving walk) will automatically stop the operation.
8. 梯级链断裂保护 Broken step chain protection	当梯级(板)链被过度拉伸或断裂时, 自动扶梯(自动人行道)将自动停止运行。 When the step (plate) chain has been over-stretched or it is broken, the escalator (moving walk) will automatically stop the operation.
9. 超速保护 Over-speed protection	当自动扶梯(自动人行道)超速, 将自动停止运行。 When there is over-speed to the escalator (moving walk), it will automatically stop the operation.
10. 非操作逆转保护 Direction reversal protection	当逆转操作而违反了预定的运行方向, 自动扶梯(自动人行道)将自动停止运行。 When it comes the unintentional reversal of the direction of travel, the escalator (moving walk) will automatically stop the operation.
11. 警戒线 Security line	黄色合成树脂警戒线位于自动扶梯踏板的前部和两边, 以防止乘客踏入相邻梯级的边缘及梯级和围裙板之间, 在梯级两端的警戒线高于踏板表面(自动人行道提供可选黄色油漆警戒线)。 The yellow synthetic resin security line is located in the front position and two sides of the escalator tread so that the passengers will not tread in-between the edge of the adjacent step and the lift group lengthened skirt panel. The security line on both sides of the step is higher than the tread surface. (The moving walk offers the selective yellow spray-painted security line.)
12. 紧急停止按钮 Emergency stop button	当按下该按钮时, 自动扶梯(自动人行道)将停止运行。 When the button has been pressed down, the escalator (moving walk) will stop the operation.
13. 围裙板保护 Skirt panel protection	当异物被夹在围裙板和梯级之间时, 自动扶梯(自动人行道)将自动停止运行。 When some foreign substance has been clipped in between the skirt panel and the step, the escalator (moving walk) will automatically stop the operation.
14. 制动器保护 Brake protection	当电力不足或任一安全装置动作时, 制动装置将通过弹簧弹力作用使制动功能生效, 使自动扶梯(自动人行道)停止运行。 When the electric force falls short of supply or it acts any of the safety device, the brake function goes into effect by the safety device through the spring resilience action. In this way, the escalator (moving walk) stops the operation.
15. 检修安全开关 Safety inspection switch	检修保养时, 防止扶梯启动的安全装置。 It is a safety device to prevent from the escalator starting during the inspection and maintenance.
16. 梯级照明 Step illumination	扶梯上下端, 梯级下部装有照明以提醒乘客注意安全。 Illumination exists in the upper and lower ends of the escalator, in the lower part of the step in order to remind the passengers of the security matters.
17. 启动警铃装置 Alarm bell starting device	扶梯启动时警铃响起, 以提醒乘客安全。 The alarm bell rings when it starts the escalator in order to remind the passengers of the security matters.
18. 扶手带断裂保护装置 Control device for handrail breakage	当扶手带断裂时, 自动扶梯将停止运行。 When the handrail is broken, the escalator will automatically stop the operation.
19. 围裙板刷 Skirt panel brush	在围裙板和梯级之间装有刷子使乘客的鞋子不会碰到围裙板(不仅限于自动扶梯)。 The brush that has been installed between the skirt panel and the step will prevent the passengers from touching the skirt panel. (It is not merely restricted to the escalator.)

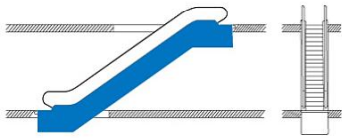
## 选配功能

Optional Function

20. VVVF变频控制技术 VVVF variable frequency energy-saving system	选用频率变换器后, 能有效的降低能源消耗。 When chooses the frequency converter, it can effectively reduce the energy consumption.
21. 梳齿照明 Comb illumination	照明被安装在靠近梳齿板旁的围裙板上, 为梯级和梳齿板提供照明以方便乘客安全的乘坐自动扶梯。 The illumination has been installed in the skirt panel near the comb plate. It offers the lighting for the step and the comb plate. It is more convenient for the passengers to up and down the escalator.
22. 扶手照明 Handrail illumination	扶手照明安装在扶手支架内, 柔和的光线为运行中的自动扶梯增添了几分灵气。 The handrail illumination has been installed in the handrail frame. The gentle light adds charm to the running escalator.
23. 自动启动/停止 Automatic start / stop	位于楼层板附近的红外线传感器可以检测到进入楼层板的乘客, 并自动开始运行, 当所有乘客离开后会自动停止运行, 以节约能耗。有扫描传感器和传统的导向杆方式可供选择。 The infrared ray sensor which is near the floor plate can detect the passenger that enter into the floor plate. Then it will automatically start the operation. After all the passengers leave, it will automatically stop the operation again in order to save the energy loss. Scanning sensor and traditional guide rod are available for your choice.

# 布置方案

Arrangement plan

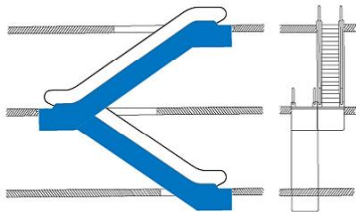


## 单台扶梯

Single unit

采用单台扶梯连接两个层面。它适合客流量主要朝一个方向流动的大楼。可作灵活的调整以满足乘客流动的需要（例如：早晨上行，晚上下行）。

The single unit used to link two levels. It is suitable for buildings with passenger traffic flowing mainly in one direction. Flexible adjustment to traffic flow (e.g., up in the morning and down in the evening) is possible.

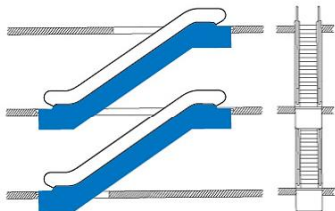


## 连续布置式（单向交通）

Continuous arrangement (one-way traffic)

这种布置方式主要用于小型百货商店，以连续三个销售楼层。这种布置比断续布置所需要的空间要多一些。

This arrangement is used mainly in smaller department stores to link three sales levels. It requires more space than the interrupted arrangement.

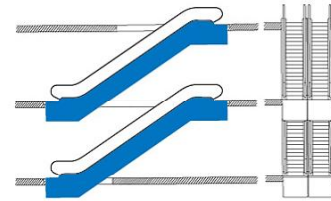


## 断续布置式（单向交通）

Interrupted arrangement (one-way traffic)

这种布置多少会给乘客带来不便，但对商场业主却有利，因为在上行或下行扶梯间以及换乘扶梯间的空间间隔有可能让顾客看到特意布置的广告展品。

This arrangement is somewhat inconvenient for users, but advantageous for department store owners, since the short detour to the next unit and the spatial separation between up and down travel is ideal for leading customers past strategically placed advertising displays.

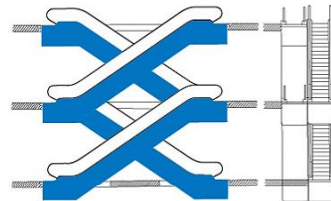


## 平行断续布置式（双向交通）

Parallel, interrupted arrangement (two-way traffic)

这种布置方式主要用于客流量较大的商场和公交设施。当有三台或三台以上自动扶梯时，就应有可能按照客流改变运动方向。这种布置方式比较经济，因为这样无需内侧挡板。

This arrangement is used mainly in department stores and public transport buildings with a heavy traffic volume. When there are three or more escalators, it should be possible to reverse the traveling direction according to the traffic flow. This arrangement is economical, since no inner lateral claddings are required.



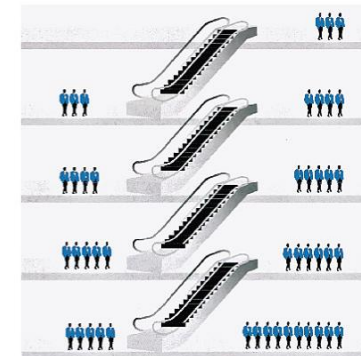
## 交叉连续布置式（双向交通）

Crisscross, continuous arrangement (two-way traffic)

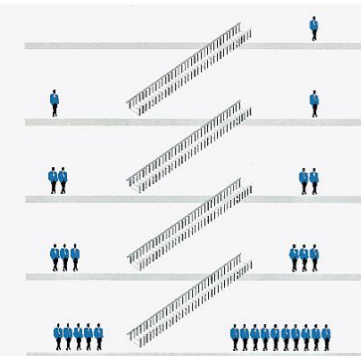
这种布置方式主要用于大型百货商场、公共建筑和公共交通工具，这些地方的楼层之间的运送次数应保持尽可能地少。

This arrangement is used mainly in major department stores, public buildings and public transport buildings where transport times between several levels should be kept to a minimum.

## 自动扶梯 Escalators



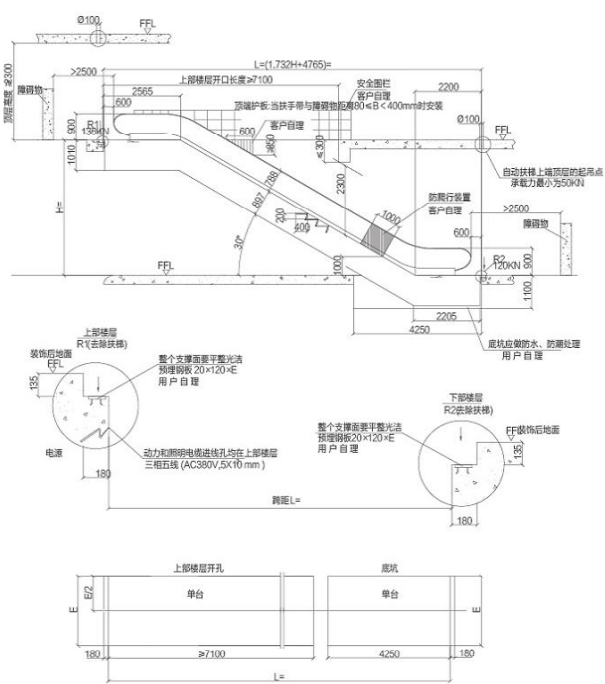
## 普通楼梯 Ordinary staircase





# TF1000/0.5-30° 土建布置图

TF1000/0.5-30° construction sketch



## TF1000/0.5-30°参数表

TF1000/0.5-30° parameter table

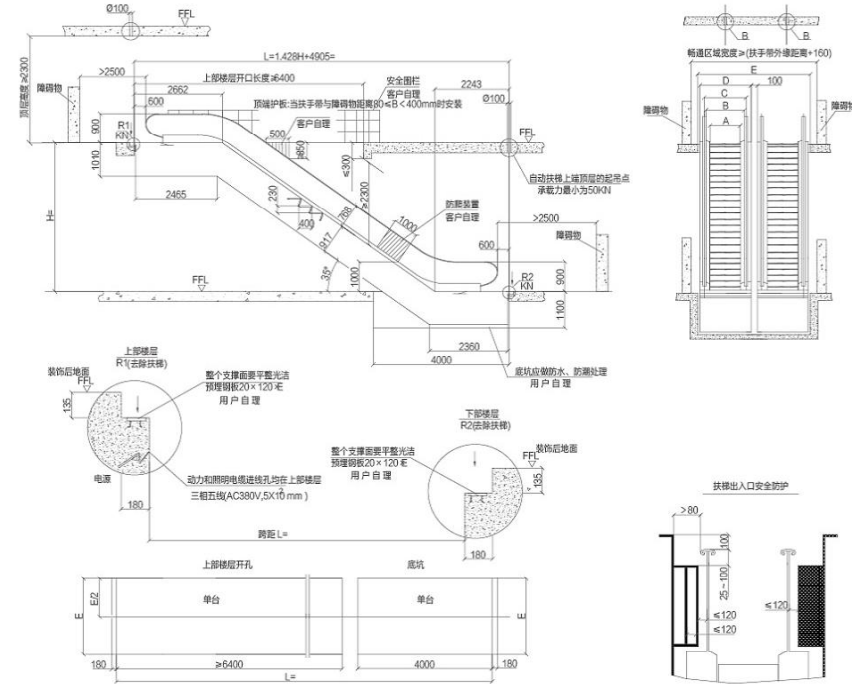
型号	提升高度 mm	净重 KN	支持力		电机功率 KW	运输尺寸							
			R1 KN	R2 KN		h	l						
TF800/0.5-30° (4800人/h) 速度: 0.5m/s	3000	118	104	94	5.5	2750	10900						
	3500	126	112	100		2780	11890						
	4000	134	120	108		2810	12880						
	4500	142	128	114	8	2830	13870						
	5000	148	136	120		2840	14860						
	5500	164	148	132		2860	15860						
TF1000/0.5-30° (6000人/h) 速度: 0.5m/s	6000	172	156	138	11	2870	16850						
	3000	126	118	106	5.5	2750	10900						
	3500	134	128	114		8	2780						11890
	4000	142	136	122			2810						12880
	4500	150	146	130	2830		13870						
	5000	166	158	142	11	2840	14860						1000
5500	174	168	150	2860		15860	800	800	958	1038	1400	3000	
6000	184	176	158	2870		16850	1000	1000	1158	1238	1600	3400	

说明

1. 当扶梯装于二楼以上时地坑取消, 土建下部结构与上部对称, 如有底坑, 应防水处理, 用户自理。
2. 自动扶梯上下出入口应有充分畅通区域, 其宽度至少等于扶手带中心线间距离, 纵深尺寸从扶手带转向端到前面障碍物不小于2500。
3. 自动扶梯扶手带到任何障碍物不小于80。
4. 电机AC380V 50Hz电机功率见表。
5. 由用户提供一电阻小于4欧姆接地装置。
6. 由用户提供至扶梯主开关的动力电源要求三相五线。
7. 所有尺寸单位用毫米, 如有变化不另行通知。
8. 所有安全围栏的高度大于(扶手带高度+100)。

# TF1000/0.5-35° 土建布置图

TF1000/0.5-35° construction sketch



## TF1000/0.5-35°参数表

TF1000/0.5-35° parameter table

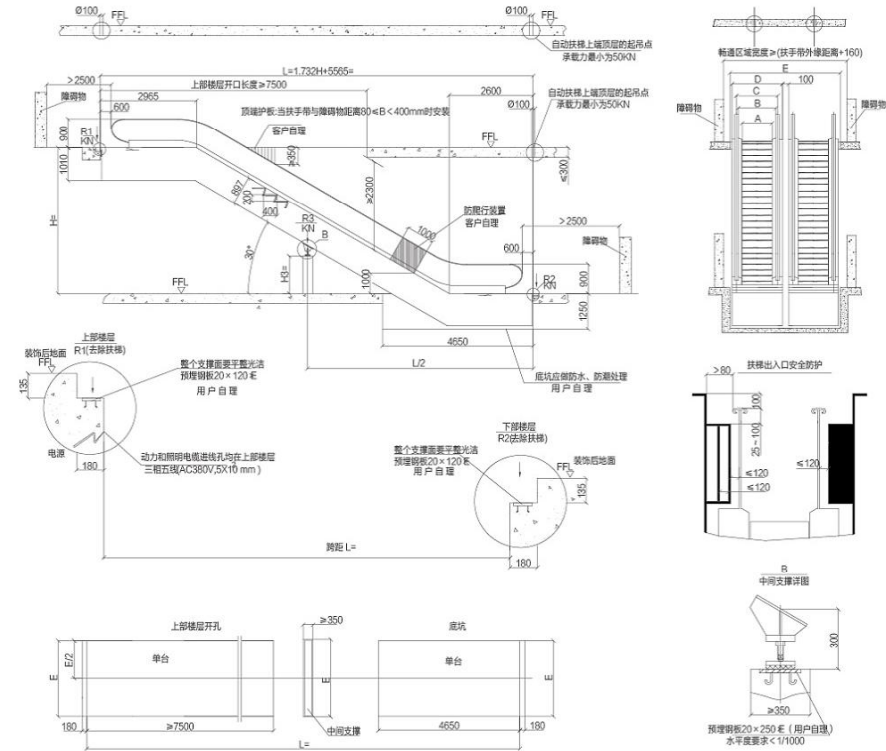
型号	提升高度 mm	净重 KN	支持力		电机功率 KW	运输尺寸							
			R1 KN	R2 KN		h	l						
TF800/0.5-35° (4800人/h) 速度: 0.5m/s	3000	112	98	88	5.5	2850	10180						
	3500	120	104	94		2890	11030						
	4000	126	112	100		2920	11890						
	4500	132	118	106	8	2940	12750						
	5000	140	124	112		2970	13610						
	5500	146	130	118		2980	14470						
TF1000/0.5-35° (6000人/h) 速度: 0.5m/s	6000	152	138	122	11	3000	15330						
	3000	120	112	100	5.5	2850	10180						
	3500	128	120	106		8	2890						11030
	4000	134	128	114			2920						11890
	4500	142	134	120	2940		12750						
	5000	148	142	128	11	2970	13610						1000
5500	158	154	138	2980		14470	800	800	958	1038	1400	3000	
6000	166	162	144	3000		15330	1000	1000	1158	1238	1600	3400	

说明

1. 当扶梯装于二楼以上时地坑取消, 土建下部结构与上部对称, 如有底坑, 应防水处理, 用户自理。
2. 自动扶梯上下出入口应有充分畅通区域, 其宽度至少等于扶手带中心线间距离, 纵深尺寸从扶手带转向端到前面障碍物不小于2500。
3. 自动扶梯扶手带到任何障碍物不小于80。
4. 电机AC380V 50Hz电机功率见表。
5. 由用户提供一电阻小于4欧姆接地装置。
6. 由用户提供至扶梯主开关的动力电源要求三相五线。
7. 所有尺寸单位用毫米, 如有变化不另行通知。
8. 所有安全围栏的高度大于(扶手带高度+100)。

# 普通型扶梯土建图（大高度）

Ordinary escalator construction sketch (great height)



# 普通型扶梯（大高度）参数表

Ordinary escalator (height) parameter table

型号	提升高度 mm	净重 KN	电机 功率	支持力 (KN)		
				R1	R2	R3
VF800/0.5-30° (4800人/h) 速度: 0.5m/s	6000	182	11KW	2.1L+13	1.9L+17	5.2L+8.2
	6500	192				
	7000	200				
	7500	208				
VF1000/0.5-30° (6000人/h) 速度: 0.5m/s	6000	196	11KW	2.3L+14	2.3L+7.1	7.16L+5
	6500	204				
	7000	212				
	7500	220				
中间支撑梁H3	$(L/2-2600) \times \tan 30^\circ - (897/\cos 30^\circ + 300)$					

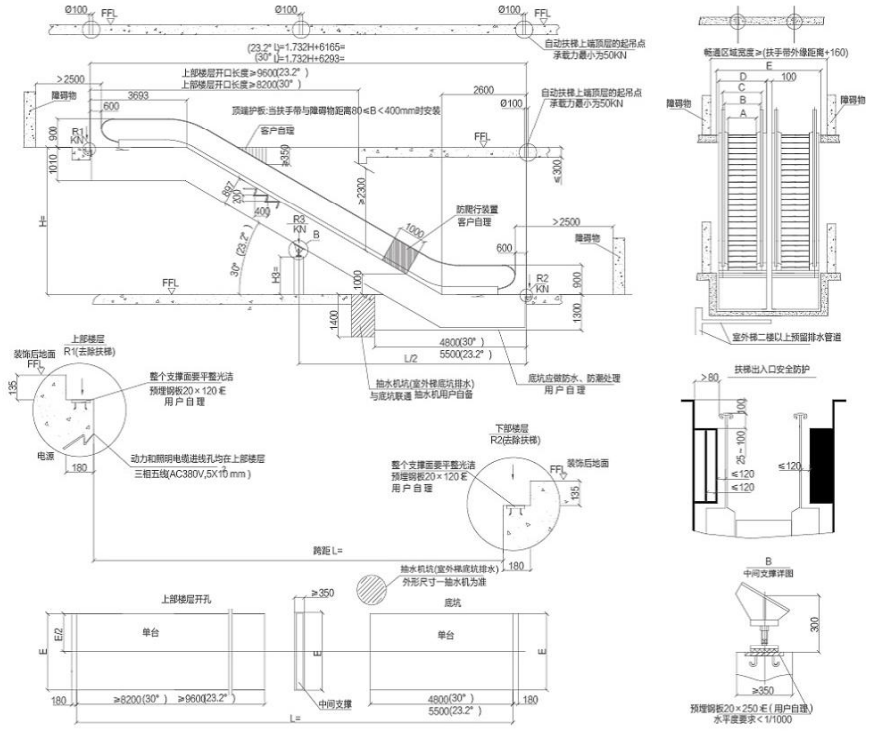
说明

- 当扶梯装于二楼以上时地坑取消, 土建下部结构与上部对称, 如有底坑, 应防水处理, 用户自理。
- 自动扶梯上下出入口应有充分畅通区域, 其宽度至少等于扶手带中心线间距, 纵深尺寸从扶手带转向端到前部障碍物不小于2500。
- 自动扶梯扶手带到任何障碍物不小于80。
- 电机AC380V 50Hz电机功率见表。
- 由用户提供一电阻小于4欧姆接地装置。
- 由用户提供至扶梯主开关的动力电源要求三相五线。
- 所有尺寸单位用毫米, 如有变化不另行通知。
- 所有安全围栏的高度大于(扶手高度+100)。

1000	1000	1158	1238	1600	3400
800	800	958	1038	1400	3000
扶梯宽度	A	B	C	D	E

# 室外公交型扶梯土建布置图（大高度）

Outdoor bus type escalator construction sketch (great height)



# 室外公交型扶梯（大高度）参数表

Outdoor bus type escalator (height) parameter table

型号	提升高度 mm	净重 KN	电机 功率	支持力 (KN)		
				R1	R2	R3
VF800/0.5-30° (4800人/h) 速度: 0.5m/s	6000	182	11KW	2.1L+13	1.9L+17	5.2L+8.2
	6500	192				
	7000	200				
	7500	208				
VF1000/0.5-30° (6000人/h) 速度: 0.5m/s	6000	196	11KW	2.3L+14	2.3L+7.1	7.16L+5
	6500	204				
	7000	212				
	7500	220				
中间支撑梁H3	$(L/2-2600) \times \tan 30^\circ - (897/\cos 30^\circ + 300)$					

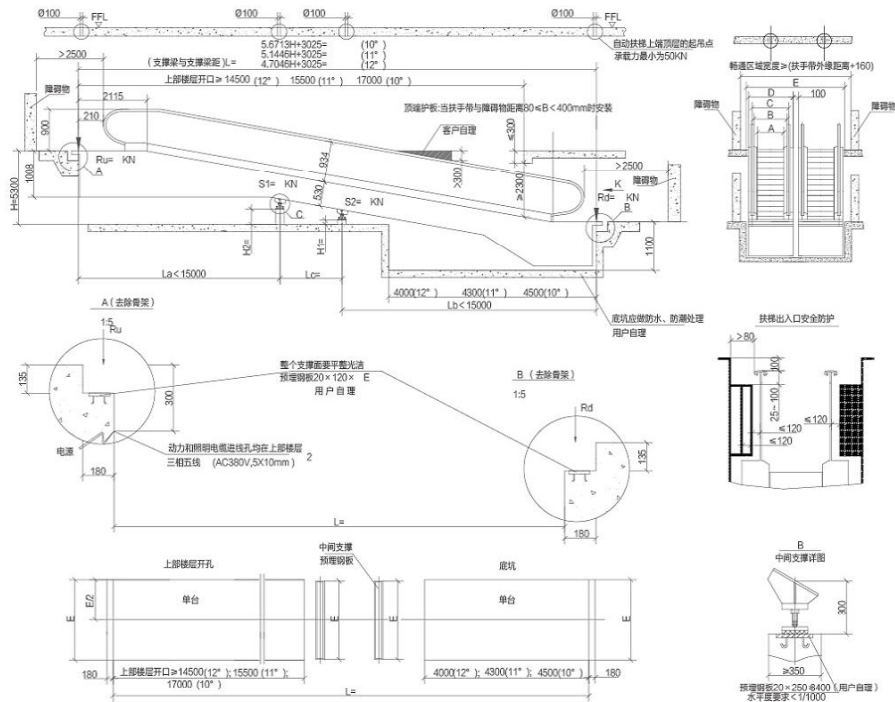
说明

- 当扶梯装于二楼以上时地坑取消, 土建下部结构与上部对称, 如有底坑, 应防水处理, 用户自理。
- 自动扶梯上下出入口应有充分畅通区域, 其宽度至少等于扶手带中心线间距, 纵深尺寸从扶手带转向端到前部障碍物不小于2500。
- 自动扶梯扶手带到任何障碍物不小于80。
- 电机AC380V 50Hz电机功率见表。
- 由用户提供一电阻小于4欧姆接地装置。
- 由用户提供至扶梯主开关的动力电源要求三相五线。
- 所有尺寸单位用毫米, 如有变化不另行通知。
- 所有安全围栏的高度大于(扶手高度+100)。

1000	1000	1158	1238	1600	3400
800	800	958	1038	1400	3000
扶梯宽度	A	B	C	D	E

# TR1000/0.5-10°/11°/12°土建布置图

TR1000/0.5-10°/11°/12° construction sketch



## TR1000/0.5-10°/11°/12° 参数表

TR1000/0.5-10°/11°/12° parameter table

提升高度	中间支撑	La(mm)	Lb(mm)	Lc(mm)
1601	2663			
2664	4151	L=7000	7000	
4152	5851	15000	L=15000	
5852	6000	15000	7000	L=22000
A	H2		H1	
10°	H2=H-(La-1995) × 0.1763-840		H1=H2-(Lc × 0.1763)	
11°	H2=H-(La-2055) × 0.1944-840		H1=H2-(Lc × 0.1944)	
12°	H2=H-(La-2115) × 0.2126-840		H1=H2-(Lc × 0.2126)	

说明

1. 当扶梯装于二楼以上时地坑取消，土建下部结构与上部对称，如有地坑，应防水处理，用户自理。
2. 自动扶梯上下出入口应有充分畅通区域，其宽度至少等于扶手带中心线间距，纵深尺寸从扶手带转向端到前面障碍物不小于2500。
3. 自动扶梯扶手带到任何障碍物不小于80。
4. 电机AC380V 50Hz电机功率见表。
5. 由用户提供一个电阻小于4欧的接地装置。
6. 由用户提供至扶梯主开关的动力电源要求三相五线。
7. 所有尺寸单位用毫米，如有变化不另行通知。
8. 所有安全围栏的高度大于(扶手高度+100)。

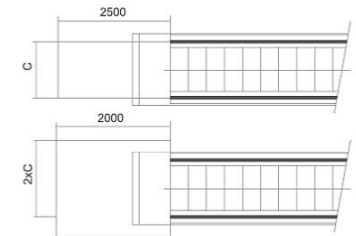
梯级宽度 (mm)	提升高度 (mm)	速度 (m/s)	公称输送容量 (人/h)	倾斜度 (°)	曳引机功率 (kW)	电源容量 (KVA)	电源额定电流 (A)
800	1000-3800	0.5	4800	10,11,12	7.5	15	39
	3800-6000				11	22	58
1000	1000-3000	0.5	6000	10,11,12	7.5	15	39
	3000-4800				11	22	58
	4800-6000				15	30	78

# 土建安装须知

Installation notes

除了确保合同土建的各尺寸和要求，以下的要求也应达到。

- 为了确保扶梯和人行道的使用安全，自由空间必须在各层站处提供足够大的空间。(参见右最小尺寸图)
- C=扶手带中心宽度
- As well as complying with the drawing of the contract, attention should also be drawn to the following
- To ensure the safety of the escalator and moving walk, free space should be large enough in the landing area.(See the minimum size on right)
- C= the distance of the handrails

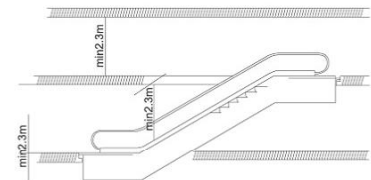


## 顶空安全距离

- 在梯阶/踏板上的任意点上，至少有2.3米不受任何障碍的安全距离。
- 特别注意！如果一台扶梯上的另一台扶梯的提升高度<3.3米，就不可能达到2.3米的顶空安全距离。

## Vertical safety distance

- There should be at least 2.3m upside safety distance starting upward from the step board.
- Notice: If the vertical rise of one escalator, which is installed above another one, is less than 3.3m, the upside safety distance can not reach 2.3m.

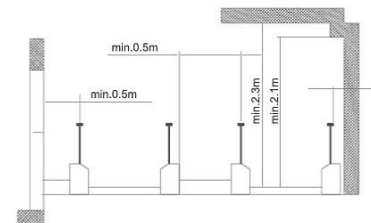


## 扶梯（人行道）安装必须保证必需的水平安全距离

- 扶手带外边缘至墙体或其它障碍物的水平安全距离必须大于80mm。
- 梯级/踏板区上方垂直安全距离必须大于2.3m。
- 扶手带区上方垂直安全距离必须大于2.1m。
- 对楼面开口或扶梯/人行道交叉布置，扶手带中心到障碍物的水平安全距离必须大于0.5m。
- 如未达到要求，需设置专门的防护装置和防撞挡板。
- 专门的防护装置和防撞挡板，可向通用电梯公司咨询。

## Escalators and moving walk horizontal safety distance

- The horizontal distance between the handrail edge and the wall or other objects should be more than 80mm.
- The vertical distance above the step board should be more than 2.3m.
- The vertical distance above the handrail space should be more than 2.1m.
- In case of floor spaces or the cross layout of escalators and moving walk, the safety distance between the handrail center and the object should be more than 0.5m.
- If the above-mentioned requirements cannot be met, a special protection device and a bumper rail should be used.
- For further information, please contact GENERAL Elevator.



## “五心”服务理念

Five-heart service concept



全生命周期服务

### 省心：产品全生命周期服务

通用电梯实现了集设计、生产、安装、销售、售后服务于一体的全生命周期服务，一站式楼宇解决方案让您更加省心。

Reliable: the full-life-cycle service

GENERAL Elevator can provide the full-life-cycle service that includes the design, production, installation, sale and after-sale service. Hence, the one-stop solution is quite reliable for our customers.



物联网技术

### 安心：先进的物联网技术

引进物联网技术，对电梯使用情况进行实时监控，提前进行故障排除，避免电梯事故发生，让您更加安心。

Reassuring: advanced internet of things

The advanced internet of things has been introduced. By monitoring the elevator operation on a real-time basis, it can remove the fault in advance and thus avoid the accident. It can make you reassured.



维保团队

### 专心：优秀的维保团队

通用维保团队都经过严格培训，具备专业的技能，经验丰富，对产品心中有数，能够专心为客户提供安全、周到的服务。

Dedicated: excellent maintenance-repair team

Our maintenance-repair team has received the strict training and thus acquired the professional skills and rich experience. The team can provide the safe and considerate service for our customers with dedication.



24小时服务热线

### 贴心：24小时服务热线

已开通24小时服务热线，365天紧急应对体制，在全国范围内迅速为客户提供专业、快速、周到的咨询和维保服务。

Considerate: 24-hour service hotline

The 24-hour service hotline has been offered. With the 365-day emergency disposal system, we can provide the professional, rapid and considerate services of consulting, maintenance and repair for those customers all over China.



服务网络

### 放心：庞大的服务网络

通用在全国庞大的服务网络，无论您在哪个城市，通用的专业团队都能就近为您提供最专业的服务指引与支持。

Trustworthy: huge service network

Through the huge service network in China, our professional team can provide the most professional service and support for those customers in all cities.