

# DSP

## Product Guide

A-Z



# Contents

**03 DSP INTRODUCTION**

**04 DSP Technology**

**05 DSP Feature**

**06 DSP Brand**

**58 DSP Ceiling Material**

Standard\_Perforated / LED

**70 DSP Ceiling Construction Method**

M-BAR

CLIP-BAR

T-BAR (Vernox)

T-BAR (Vergate)

# DSP

Design Stainless Product

## About DSP

---

**Introducing the New Concept of “Eco-Friendly Stainless Steel” by DSP’s World-Leading Technology for People.**

DSP Co., Ltd. has been consistently developed the New Stainless Steel Products to ensure not only the satisfaction, but also to impress the customers since 1988. DSP Co., Ltd. will continue its endless dedication to perfect its Every Products to be the Masterpiece.

DSP applied Advanced High-Vacuum Technology and Organic/Inorganic Hybrid Coating Technology to produce Laminated Metal Sheet with both Functionality and Design.

In addition, the Productivity and Efficiency proved “Roll to Roll” Technology has created the “INOXTEEL”, which is the Color Stainless Steel Laminated Sheet which have been satisfied its clients ever since.

We, DSP are putting our best efforts in endless development of our creative and innovative products to satisfy our Customers’ needs.

# [R2R]PVD / NCC Coating / Metal Lamination

Technology to enhance the Uniformity and Functionality of the Product.

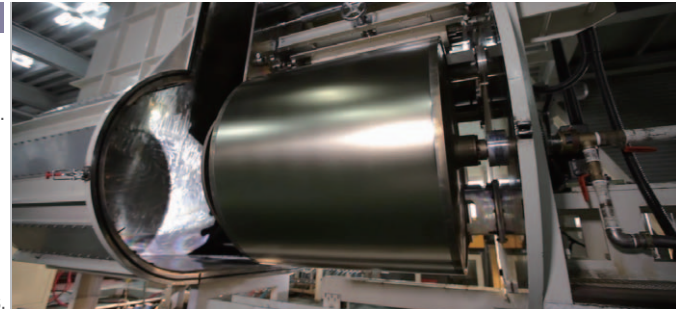
## Premium PVD Coating

Extensive, Economic, and Efficient PVD Coating (Ti-ion Coating) by Roll to Roll Technology.

**Strength 1)** PVD Coated Products have 10X stronger Surface Hardness than Regular Stainless Steel Products.

**Strength 2)** Permanent Durability, Chemical/Corrosion Resistance, and Excellent Maintainability of Stainless Steel.

**Strength 3)** Strongly Suggest to use the Roll to Roll Product for large area, such as Exterior Material and Industrial Material (i.e. Automotive/Home appliance) which requires color deviation free surfaces.



## Elegant NCC Coating

Easy Maintainability by Easy-Cleaning Features of Nano Ceramic Coating (NCC) Technology.

**Strength 1)** Proven Anti-Mold, Anti-bacterial, Contamination Resistance, Fingerprint Resistance, and Scratch Resistance Functionality. (Certification Acquired.)

**Strength 2)** No Crack found for Bending/Cutting process after NCC Coating (7mm Bending Available)

**Strength 3)** Elegant Color Indication than general Stainless Steel with Easy to Maintain by the Enhanced Contamination Resistance and Surface Protection Ability.



## Intact Lamination between Different Materials.

DSP's Lamination Technology provides Cost-Saving, and Material Efficiency.

**Strength 1)** Material Efficiency by Reducing the amount of Expensive Surface Plate.

**Strength 2)** Strong Adhesiveness allows to apply on every Metal Fabrication Methods.

**Strength 3)** Able to Visualize Consistent Color on Large Area by using Thin Surface Plate.



# Feature of DSP PRODUCT

Proud to Introduce Reliable Made-In-Korea Technology.



## Highly-Efficient, Extensive Roll to Roll System

Excellent Color Stability, Uniformity, and Repeatability with Cost Efficiency by Roll to Roll Process.



## Reliable Made in Korea Products

Supplied with ONLY POSCO & Hyundai BNG Steel produced, 100% Made in Korea Stainless Steel with High Reliability.



## Eco-Friendly Material & High Durability

USA Eco-Friendly Certification "GREEN GUARD" acquired Product with High Surface Strength, Durability and Corrosion Resistance.



## Elegant and Luxurious Surface Texture

Various Colored Ti-ion Coating (PVD) + Nano Ceramic Coating (NCC)



## Excellent Fire Resistance

Excellent Non-Combustible material will safely ensure you Fire Resistance in various applications.



## Excellent Damping Properties

With Adhesive Technology of different Metals, High Damping Properties are presented.



## Excellent Economic Efficiency

We produced Laminated Sheet with Surface Treated Stainless Steel for the Reasonable Price. Economically Efficient compared to Regular Solid Sheets.



## Excellent Processability

Excellent Adhesive strength provides Processability with durability which can be bent as low as 7mm.



# DSP Brand

8

**Roofing & Wall Cladding**

Color Stainless Steel

Alusteel

Supermags

14

**Home Appliance**

Color Stainless Steel

16

**Auto Trim and Accessories**

Color Stainless Steel

18

**Exterior Material**

Inoxteel

Color Stainless Steel

Supernox

Alusteel

Supermags

28

**Interior Material**

Color Stainless Steel

Inoxteel

Vernox

Alusteel

Superteel

Vergate

Corrugate

42

**Interior Product**

Verblock Verpanel

Verblock Plus

Inoxta-Wall

Inoxta-Flooring

Ver-Q

54

**Color Pipe**

8Ø Pipe

Polishing Pipe

Stripe Pipe

56

**Interior Accessories**

Verblock Frame

Switch Cover Color

Deco Stan

Mixing Palette

DSP provides various products from various materials to provide the Quality which satisfies our Clients.

CSS, INOXTEEL, ALUSTEEL, SUPERMAGS, SUPERTEEL, SUPERNOX, VERNOX, VERGATE, CORRDATE, VERBLOCK, VERBLOCK PLUS, INOXTA, VER Q

**COLOR** STAINLESS STEEL  
Color Stainless Steel

**INOXTEEL**  
Inoxteel

**ALUSTEEL**  
Alusteel

**SUPERMAGS**  
Supermags

**SUPERTEEL**  
Superteel

**SUPERNOX**  
Supernox

**Vernox**  
Vernox

**Vergate**  
Vergate

**Ver Block**  
Verblock

# CSS (Color Stainless Steel)

Color Stainless Steel for Construction Roofing & Wall Cladding is Product of DSP's Technologies of Roll 2 roll PVD (Ti-Ion) and Nano Ceramic Coating.

## Option 1

UNIT : mm

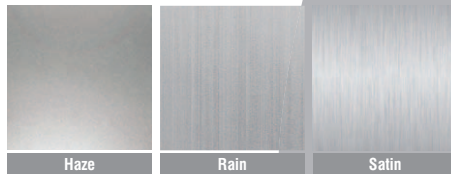
| Material       | Single-Surface  |
|----------------|---|
|                | Color Stainless Steel                                 |
| Thickness      | 0.5 mm  |
| Width / Length | Width : 1,000 mm (Width and Length can be negotiated) |

## Option 2

UNIT : mm

| Material       | Surface   | Back                   |
|----------------|---|------------------------|
|                | Color Stainless Steel                                 | Tri-Alloy Plated Steel |
| Thickness      | 0.1 mm  | 0.4 mm                 |
| Width / Length | Width : 1,000 mm (Width and Length can be negotiated) |                        |

## Surface Texture



## Color

※ Custom color is available.



## Option2

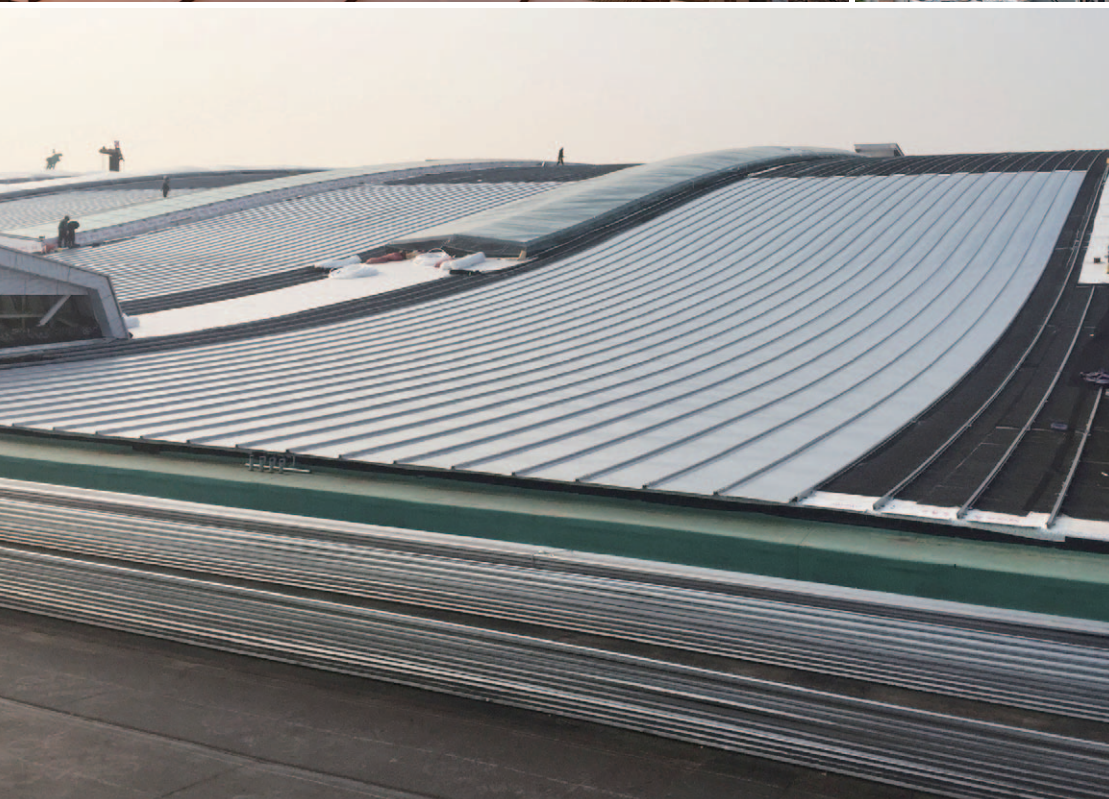
Color Stainless Steel(0.1mm)

Tri-Alloy Plated Steel(0.4mm)

## Option1

Color Stainless Steel(0.5 mm)





# ALUSTEEL

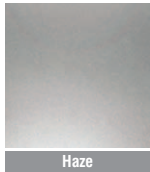
ALUSTEEL for Construction Roofing & Wall Cladding is DSP's Brand of Colored Aluminum Laminated Sheet with ALUMINUM + STEEL.

## Specification

UNIT : mm

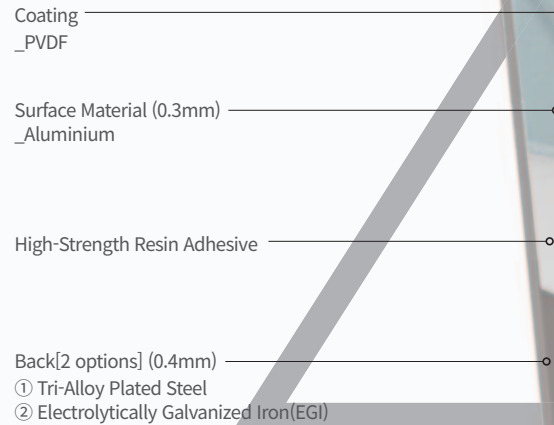
| Material       | Surface   | Back                         |
|----------------|---|------------------------------|
|                | Aluminium   | Tri-Alloy Plated Steel / EGI |
| Thickness      | 0.3 mm  | 0.4 mm                       |
| Width / Length | Width : 1,219 mm (Width and Length can be negotiated) |                              |

## Surface Texture



## Color

※Custom color is available.





# SUPERMAGS

**SUPERMAGS** for Construction Roofing & Wall Cladding is DSP's Brand of Colored Tri-Alloy Plated Steel sheet, which is Three Component (Zn, Al, Mg) plated Steel, which has five times higher corrosion resistance feature than General Hot-dip Galvanized Steel.

Back Material(0,5mm)  
\_ Tri-Alloy Plated Steel

Nano Ceramic Coating(NCC)  
\_[Under Coat]

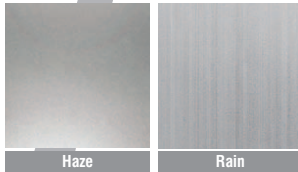
Nano Ceramic Coating(NCC)  
\_[Top Coat]

## Specification

UNIT : mm

|               |   |
|---------------|---|
| Material      | Tri-Alloy Plated Steel                                |
| Thickness     | 0.5 mm  |
| Width/ Length | Width : 1,219 mm (Width and Length can be negotiated) |

## Surface Texture



## Color

※Custom color is available.





# CSS Color Stainless Steel

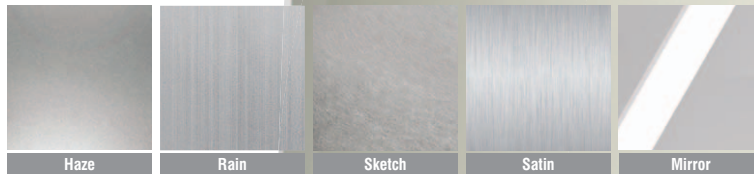
**Color Stainless Steel** for Home Appliance is Product of DSP's Technologies of Roll 2 roll PVD (Ti-Ion) and Nano Ceramic Coating.

## Specification

UNIT : mm

|                |   |
|----------------|---|
| Material       | Stainless Steel                                       |
| Thickness      | 0.5 mm - 0.7 mm                                       |
| Width / Length | Width : 1,219 mm (Width and Length can be negotiated) |

## Surface Texture



## Color

※Custom color is available.



○ Stainless Steel  
(0.5 - 0.7 mm)

○ PVD-Ti-ion Coating

○ Nano Ceramic Coating(NCC)

GE & GE  
Profile Series



# CSS Color Stainless Steel

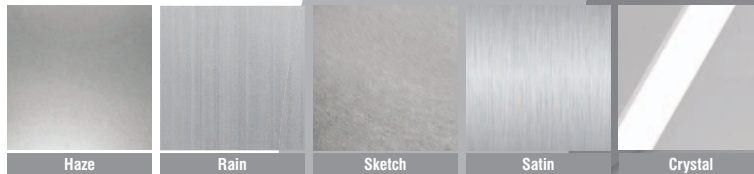
Color Stainless Steel for Auto Trim and Accessories is Product of DSP's Technologies of Roll 2 roll PVD (Ti-Ion) and Nano Ceramic Coating.

## Specification

UNIT : mm

|                |   |
|----------------|---|
| Material       | Stainless Steel                                       |
| Thickness      | 0.4 mm - 0.5 mm                                       |
| Width / Length | Width : 1,000 mm (Width and Length can be negotiated) |

## Surface Texture



## Color

※Custom color is available.



Nano Ceramic Coating(NCC)

PVD-Ti-ion Coating

Stainless Steel(0.4 - 0.5 mm)





# INOXTEEL

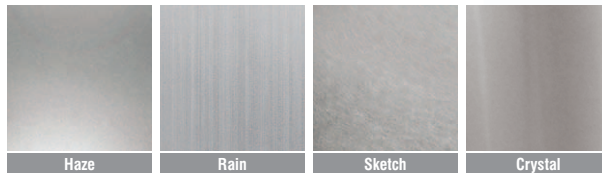
INOXTEEL is DSP's Representative Brand of Colored Stainless Steel Laminated Sheet with INOX + Steel.

## Specification

UNIT : mm

| Material       | Surface   | Back   |
|----------------|---|--|
|                | Stainless Steel 304                                   | Tri-Alloy Plated Steel / EGI / Stainless Steel 430 |
| Thickness      | 0.2 mm  | 0.6 mm - 1.2 mm                                    |
| Width / Length | Width : 1,219 mm (Width and Length can be negotiated) |  |

## Surface Texture



## Color

※Custom color is available.



Back Material(Optional)  
 ① Tri-Alloy Plated Steel  
 ② Electrolytically Galvanized Iron(EGI)  
 ③ Stainless Steel 430

High-Strength Resin Adhesive

Surface Material  
 \_Stainless Steel 304

PVD-Ti-ion Coating

Nano Ceramic Coating(NCC)



# CSS Color Stainless Steel

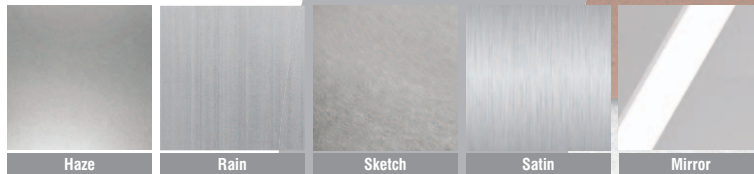
**Color Stainless Steel** for Exterior is Product of DSP's Technologies of Roll 2 roll PVD (Ti-Ion) and Nano Ceramic Coating.

## Specification

UNIT : mm

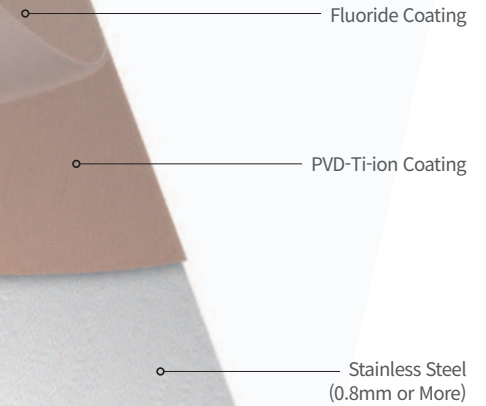
|                |   |
|----------------|---|
| Material       | Stainless Steel                                       |
| Thickness      | 0.8 mm or More  |
| Width / Length | Width : 1,219 mm (Width and Length can be negotiated) |

## Surface Texture



## Color

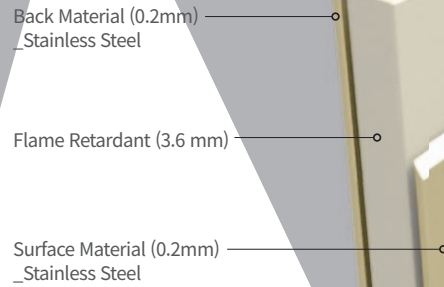
※Custom color is available.





# SUPERNOX Color Stainless Steel Composite Panel

**SUPERNOX** for Exterior is Product of DSP's 4T Composite Panel which enables perfect Flatness of the Panel.

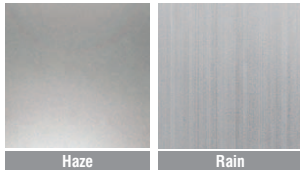


## Specification

UNIT : mm

| Material       | Surface · Back  | Core            |
|----------------|---|-----------------|
|                | Stainless Steel                                       | Flame Retardant |
| Thickness      | 0.2 mm  | 3.6 mm          |
| Width / Length | Width : 1,219 mm (Width and Length can be negotiated) |                 |

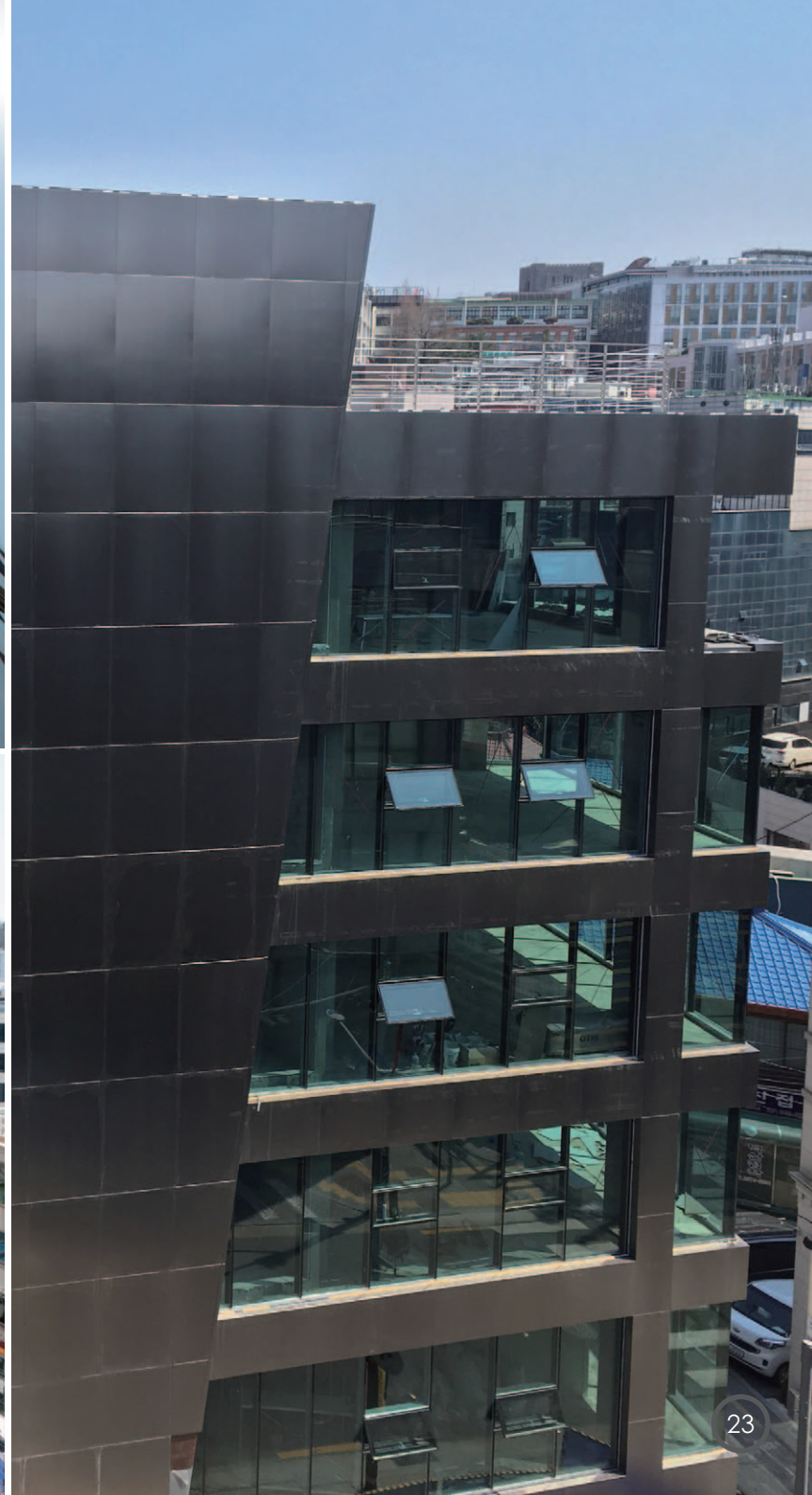
## Surface Texture



## Color

※Custom color is available.





# ALUSTEEL

**ALUSTEEL** for Exterior is DSP's Brand of Colored Aluminum Laminated Sheet with ALUMINUM + STEEL.

## Specification

UNIT : mm

| Material       | Surface   | Back                         |
|----------------|---|------------------------------|
|                | Aluminium   | Tri-Alloy Plated Steel / EGI |
| Thickness      | 0.5 mm  | 1.0 mm                       |
| Width / Length | Width : 1,219 mm (Width and Length can be negotiated) |                              |

## Surface Texture



## Color

※Custom color is available.



- 
- Back Material(1.0mm)(Option)
    - ① Tri-Alloy Plated Steel
    - ② Electrolytically Galvanized Iron(EGI)
  - High-Strength Resin Adhesive
  - Surface Material (0.5T)
    - \_Aluminium
  - Coating
    - \_PVDF





# SUPERMAGS

**SUPERMAGS** for Exterior is DSP's Brand of Colored Tri-Alloy Plated Steel sheet, which is Three Component (Zn, Al, Mg) plated Steel, which has five times higher corrosion resistance feature than General Hot-dip Galvanized Steel.

Material(0.5mm / 1.2mm)  
\_ Tri-Alloy Plated Steel

Nano Ceramic Coating(NCC)  
\_[Under Coat]

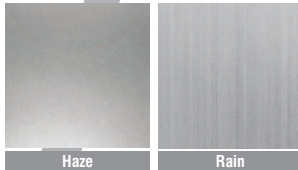
Nano Ceramic Coating(NCC)  
\_[Top Coat]

## Specification

UNIT : mm

|                |   |
|----------------|---|
| Material       | Tri-Alloy Plated Steel                                |
| Thickness      | 0.8 mm - 1.5 mm                                       |
| Width / Length | Width : 1,219 mm (Width and Length can be negotiated) |

## Surface Texture



## Color

※Custom color is available.





# CSS (Color Stainless Steel)

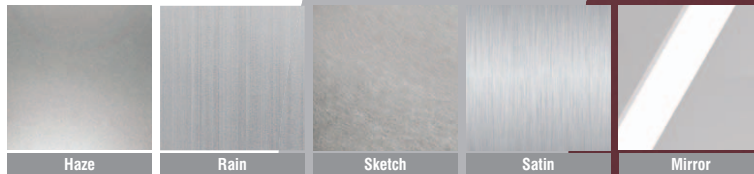
Color Stainless Steel for Interior is Product of DSP's Technologies of Roll 2 roll PVD (Ti-Ion) and Nano Ceramic Coating.

## Specification

UNIT : mm

|                |   |
|----------------|---|
| Material       | Stainless Steel                                       |
| Thickness      | 0.5 mm~ 2.0 mm  |
| Width / Length | Width : 1,219 mm (Width and Length can be negotiated) |

## Surface Texture



## Color

※Custom color is available.



Option1

- Stainless Steel(1.2 T)
- Nano Ceramic Coating(NCC)\_[Under Coat]
- Nano Ceramic Coating(NCC)\_[Top Coat]

Option2

- Stainless Steel(1.2 T)
- PVD-Ti-ion Coating
- Nano Ceramic Coating(NCC)



# INOXTEEL

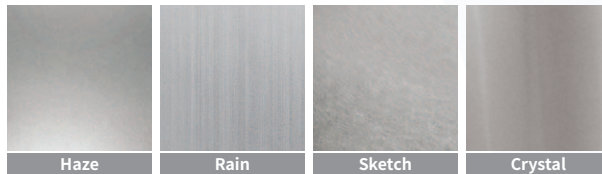
INOXTEEL is DSP's Representative Brand of Colored Stainless Steel Laminated Sheet with INOX + Steel.

## Specification

UNIT : mm

| Material       | Surface   | Back   |
|----------------|---|--|
|                | Stainless Steel                                       | Tri-Alloy Plated Steel / EGI / Stainless Steel |
| Thickness      | 0.2 mm  | 0.6 mm - 1.2 mm                                |
| Width / Length | Width : 1,219 mm (Width and Length can be negotiated) |  |

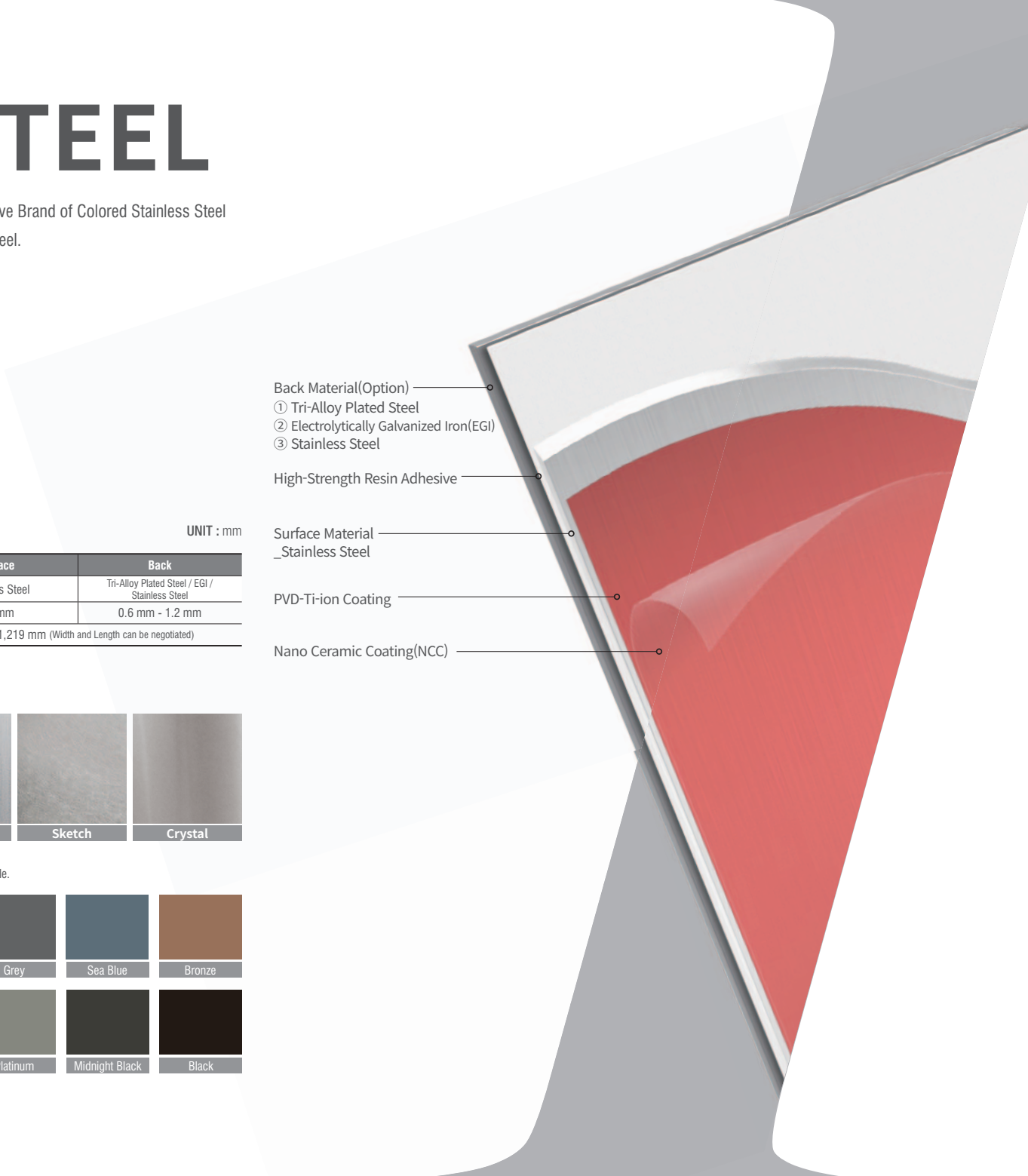
## Surface Texture

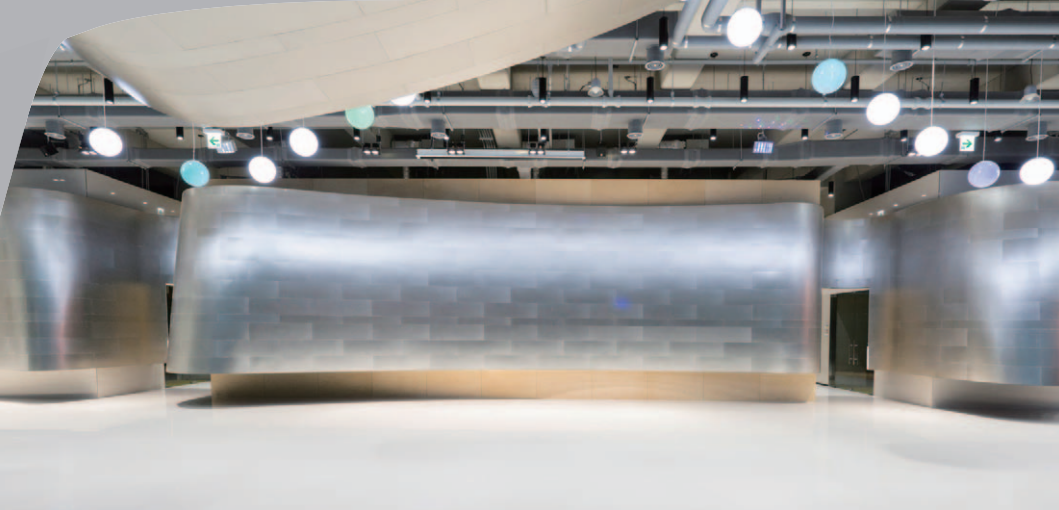


## Color

※Custom color is available.

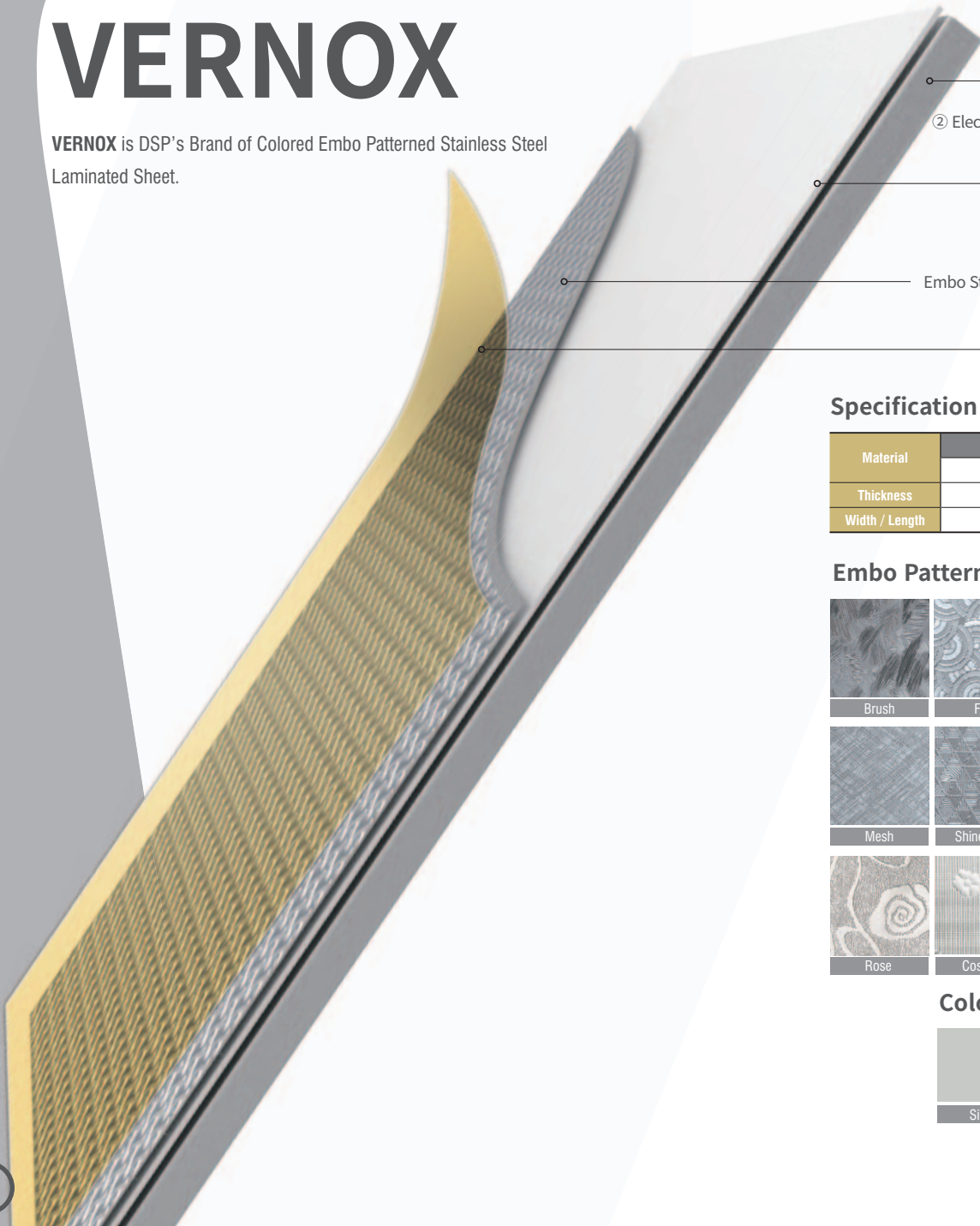


- 
- Back Material(Optional)
    - ① Tri-Alloy Plated Steel
    - ② Electrolytically Galvanized Iron(EGI)
    - ③ Stainless Steel
  - High-Strength Resin Adhesive
  - Surface Material  
\_Stainless Steel
  - PVD-Ti-ion Coating
  - Nano Ceramic Coating(NCC)



# VERNOX

VERNOX is DSP's Brand of Colored Embo Patterned Stainless Steel Laminated Sheet.



Back Material(Option)  
① Tri-Alloy Plated Steel  
② Electrolytically Galvanized Iron(EGI)

High-Strength Resin Adhesive

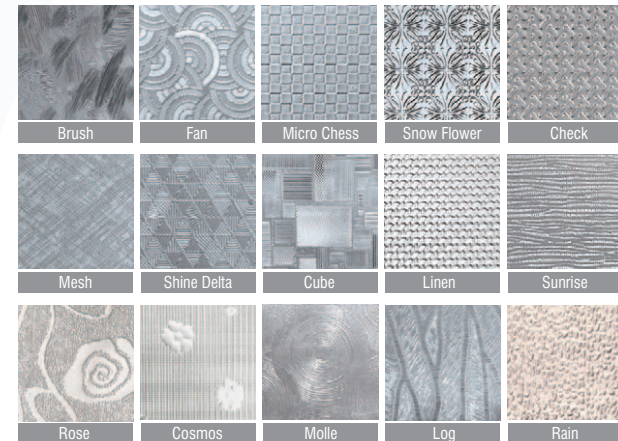
Embo Stainless Steel(0.06mm / 1.0mm)

PVD-Ti-ion Coating

## Specification

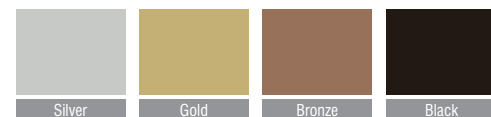
| Material       | Surface                                   | Back                         |
|----------------|---|------------------------------|
|                | Embo Stainless Steel                      | Tri-Alloy Plated Steel / EGI |
| Thickness      | 0.06 mm                                   | 0.6 mm - 1.0 mm              |
| Width / Length | Width : 600 mm (Length can be negotiated) |                              |

## Embo Pattern



## Color

※Custom color is available.







# ALUSTEEL

**ALUSTEEL** is DSP's Brand of Colored Aluminum Laminated Sheet with ALUMINUM + STEEL.

## Specification

UNIT : mm

| Material       | Surface   | Back                         |
|----------------|---|------------------------------|
|                | Aluminium   | Tri-Alloy Plated Steel / EGI |
| Thickness      | 0.5 mm  | 1.0 mm                       |
| Width / Length | Width : 1,219 mm (Width and Length can be negotiated) |                              |

## Surface Texture



Haze

## Color

※Custom color is available.



Silver

Light Grey

Grey

Back Material(Optional)  
 ① Tri-Alloy Plated Steel  
 ② Electrolytically Galvanized Iron(EGI)

High-Strength Resin Adhesive

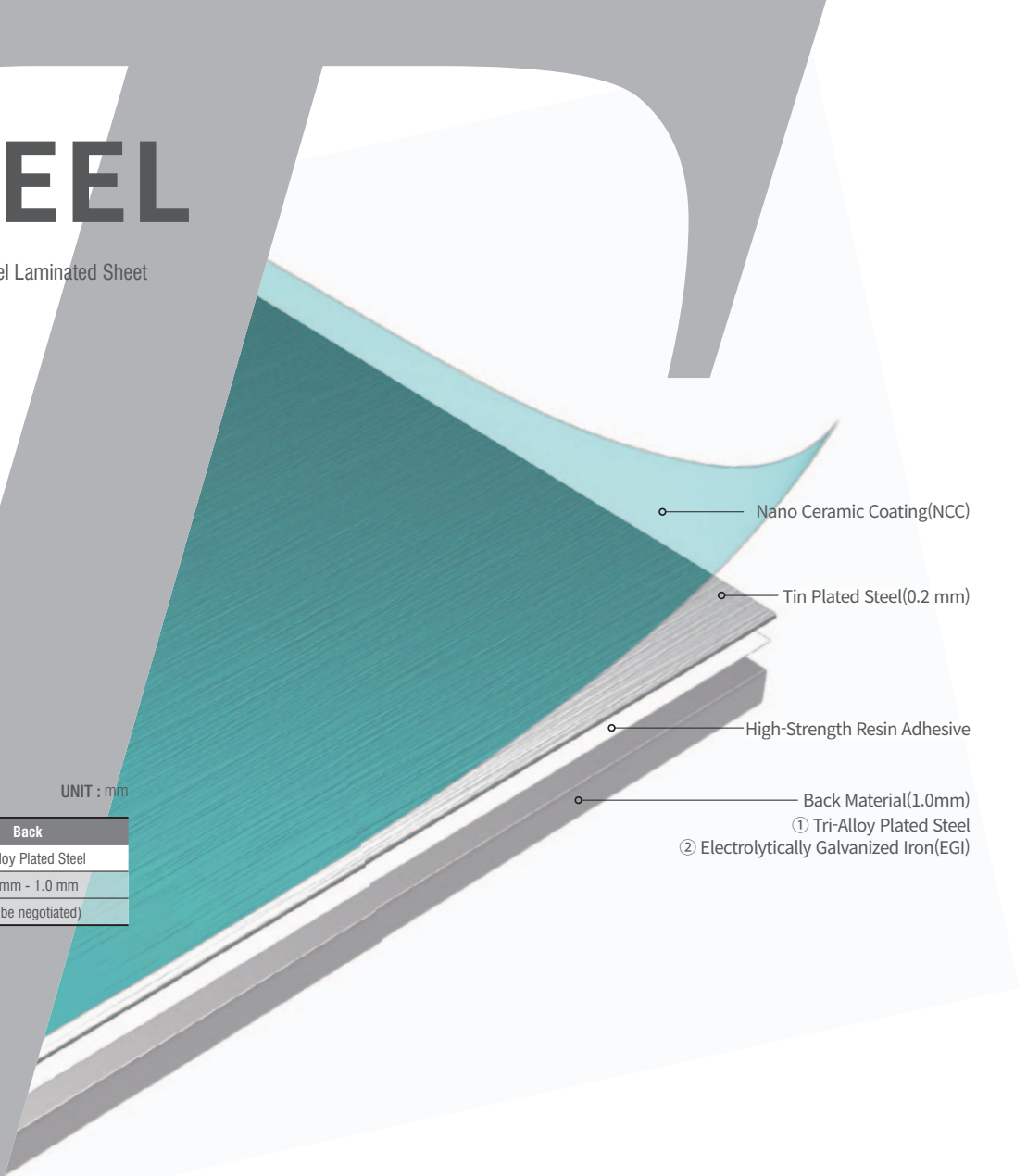
Surface Material (0.5T)  
 \_Aluminium

Coating  
 \_PVDF



# SUPERTEEL

**SUPERTEEL** is DSP's Brand of Colored Tin Plated Steel Laminated Sheet with Stainless-Steel-Like Impressions.



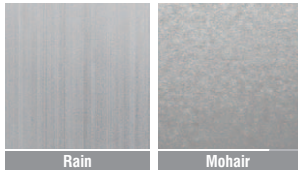
- Nano Ceramic Coating(NCC)
- Tin Plated Steel(0.2 mm)
- High-Strength Resin Adhesive
- Back Material(1.0mm)
  - ① Tri-Alloy Plated Steel
  - ② Electrolytically Galvanized Iron(EGI)

## Specification

UNIT : mm

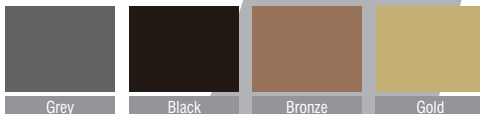
| Material       | Surface   | Back            |
|----------------|---|-----------------|
|                |   | Tin Plate       |
| Thickness      | 0.2 mm  | 0.4 mm - 1.0 mm |
| Width / Length | Width : 980 mm (Width and Length can be negotiated) |                 |

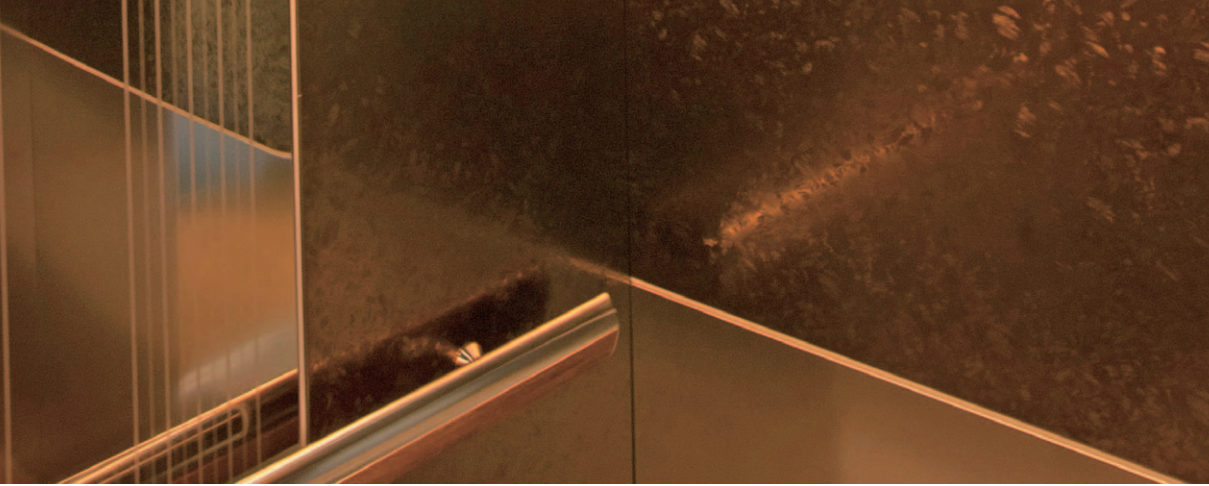
## Surface Texture



## Color

※Custom Color is available.

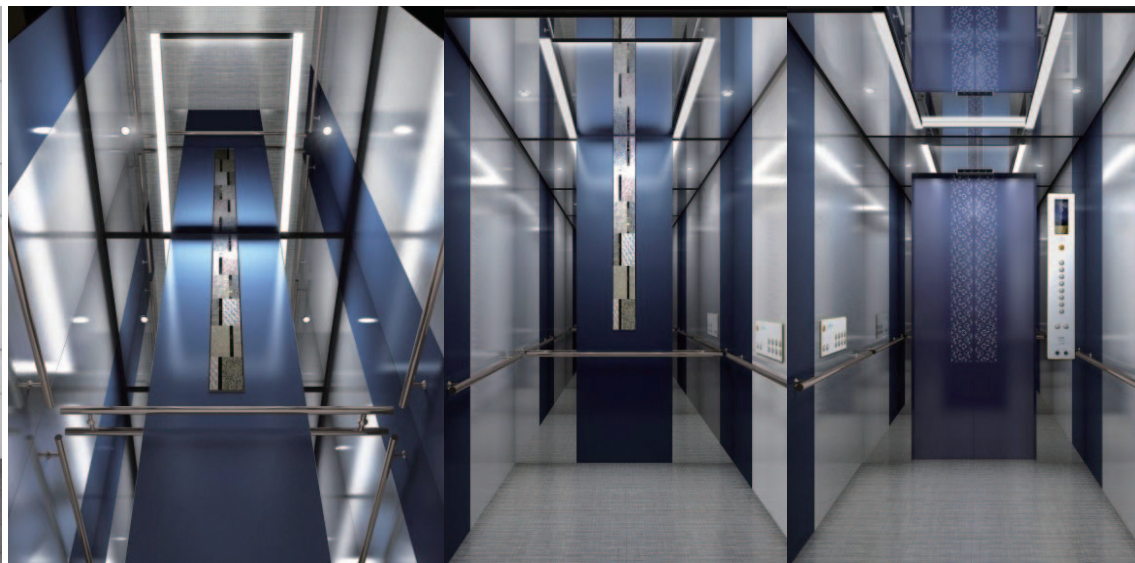




© thyssenkrupp Elevator Technology



© thyssenkrupp Elevator Technology



© thyssenkrupp Elevator Technology

# VERGATE

VERGATE is The Most Idealistic Panel System which you can exhibit the Flat & Curved Surfaces as Architects & Designers' Intention.

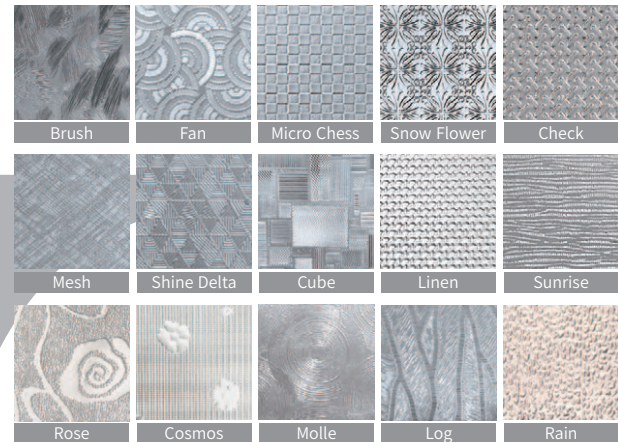
## Specification

UNIT : mm

|                   |                                     |                 |
|-------------------|-------------------------------------|-----------------|
| Surface           | VERNOX (Ultra Thin Stainless Steel) |                 |
| Surface Thickness | 0.06                                |                 |
| Back Thickness    | Tri Alloy Plated Steel 0.5mm        |                 |
| Product Size      |                                     | Length: Max 10m |

※The size of the actual product may differ from the size after the installation due to the overlapped section at the Installation.

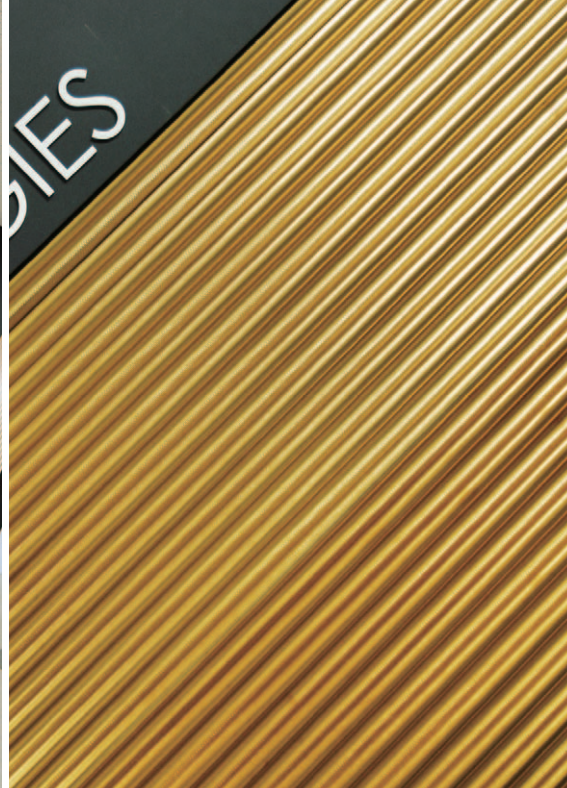
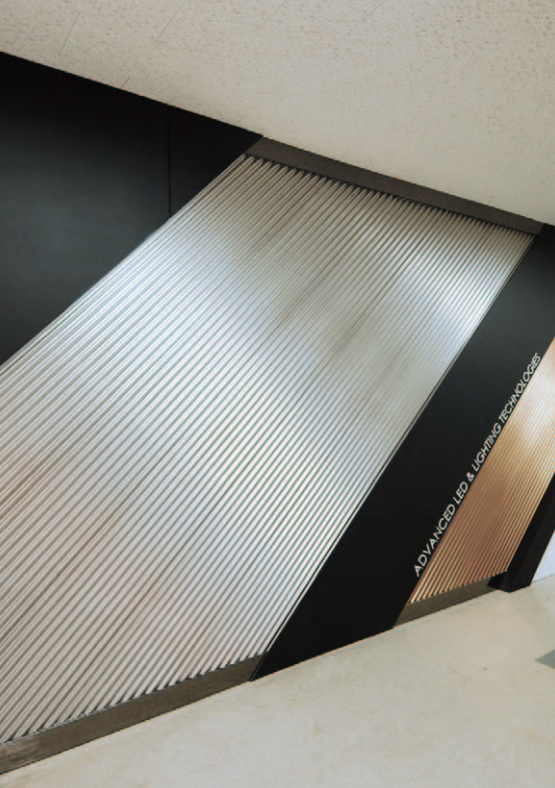
## Embo Pattern



## Color

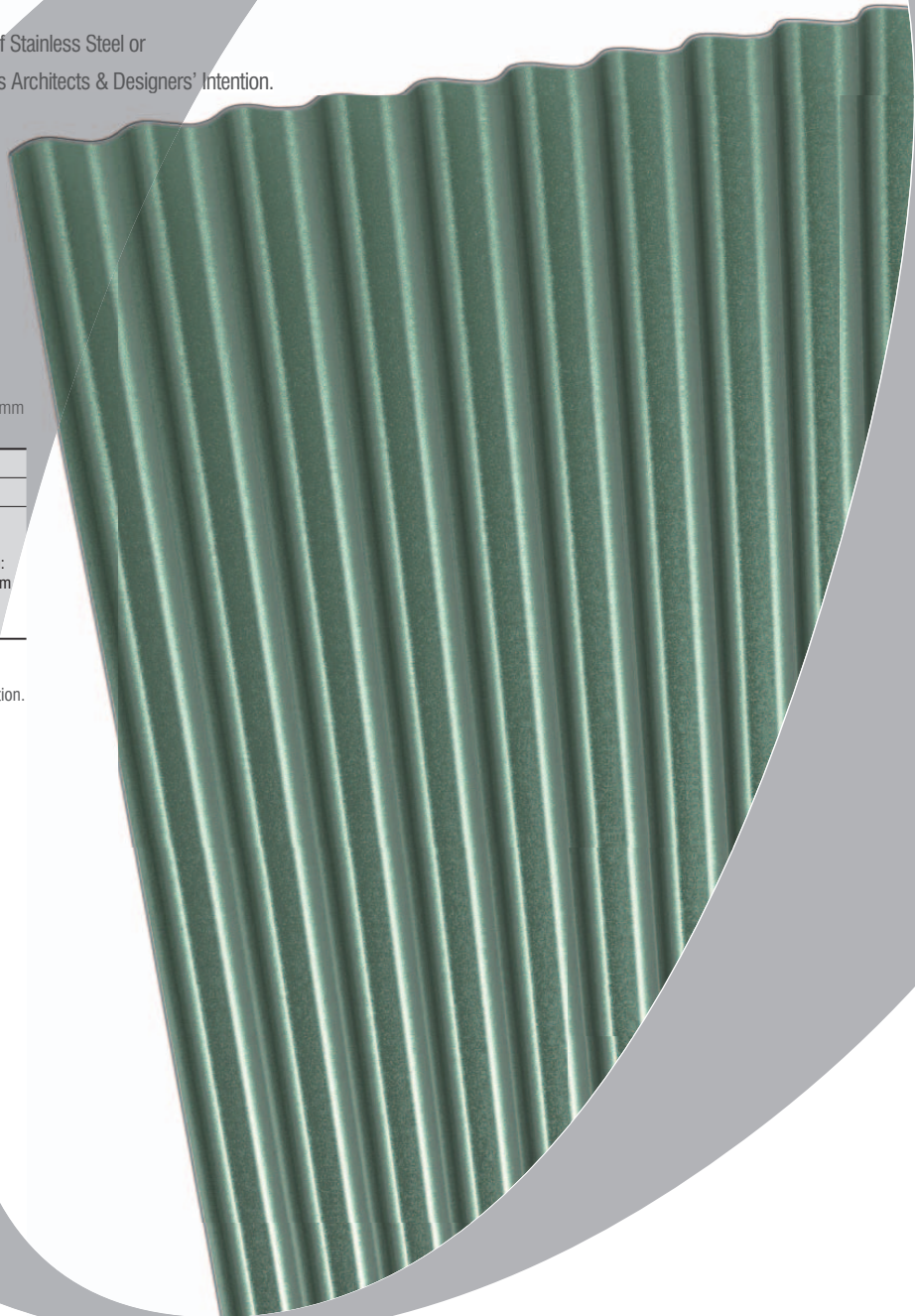
※Custom Color is available.





# Corrugate

**Corrugate** is The Most Idealistic Panel System with 0.5mm Thickness of Stainless Steel or SUPERMAGS Panel which you can exhibit the Flat & Curved Surfaces as Architects & Designers' Intention.



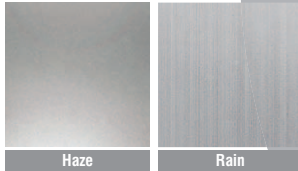
## Specification

UNIT : mm

|              |                            |                    |
|--------------|----------------------------|--------------------|
| Surface      | Stainless Solid, Supermags |                    |
| Thickness    | 0.5                        |                    |
| Product Size |                            | Length:<br>Max 10m |
|              |                            |                    |
|              |                            |                    |

※The size of the actual product may differ from the size after the installation due to the overlapped section at the Installation.

## Surface Texture



Haze

Rain

## Color

※Custom Color is available.



Light Grey

Grey

Jade Green

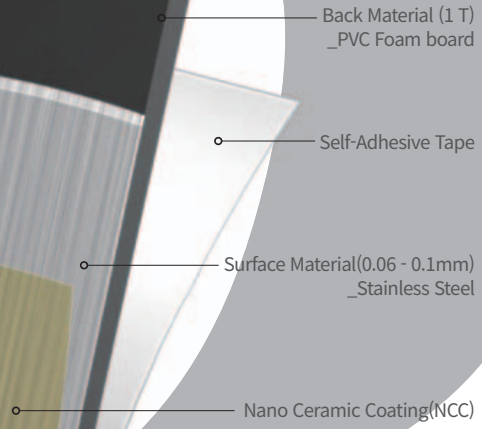
Champagne Gold





# VERBLOCK

**VERBLOCK** is Do It Yourself Stainless Steel Tile which can be directly installed by Sticker Type Adhesive Tile with PVC Foam board laminated on Stainless Steel Surface Material.



## Specification

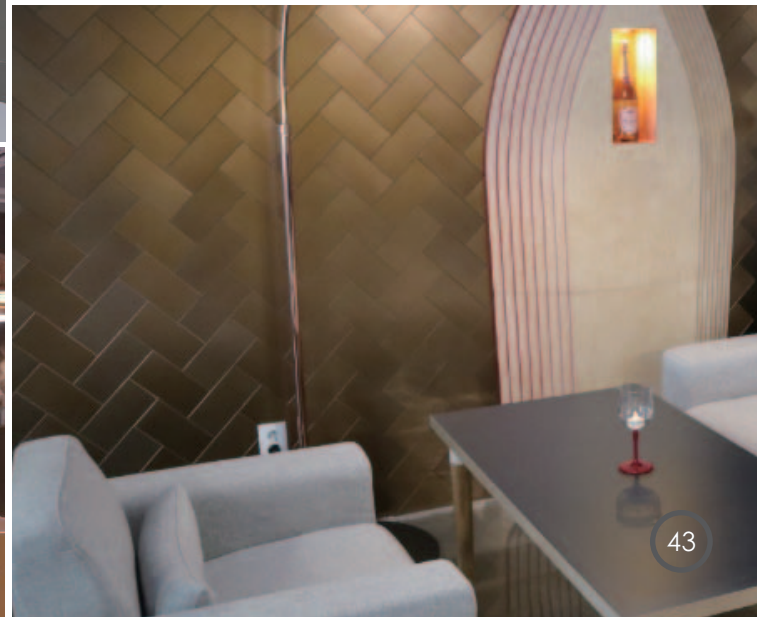
UNIT : mm

| Material       | Surface  | Back                                |
|----------------|--|-------------------------------------|
|                | Stainless Steel  | PVC Foam board + Self-Adhesive Tape |
| Thickness      | 0.06 - 0.1 mm  | 1.1 mm                              |
| Width / Length | 100 x 100 / 100 x 200 / 200 x 200<br>(Width and Length can be negotiated.) |                                     |

## Pattern & Color

※Custom Color is available.





# VERPANEL

**VERPANEL** is Do It Yourself Stainless Steel Panel which can be installed on Larger Areas by Sticker Type Adhesive Tile with PVC Foam board laminated on Stainless Steel Surface Material.

- Self-Adhesive Tape
- Back Material(1 mm)  
\_PVC Foam board
- Surface Material (0.06 - 0.1mm)  
\_Stainless Steel
- Nano Ceramic Coating(NCC)



## Specification

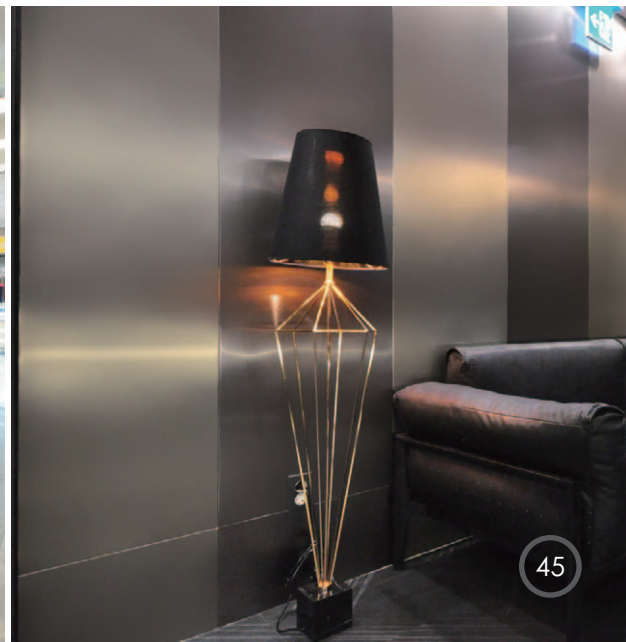
UNIT : mm

| Material       | Surface  | Back                                |
|----------------|--|-------------------------------------|
|                | Stainless Steel                                  | PVC Foam Board + Self-Adhesivs Tape |
| Thickness      | 0.06 - 0.1 mm                                    | 1.1 mm                              |
| Width / Length | 600 x 2400 (Width and Length can be negotiated.) |                                     |

## Pattern & Color

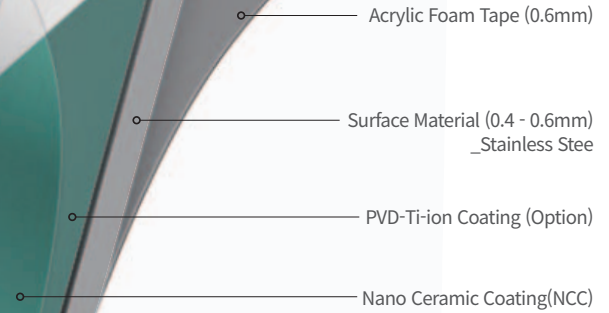
※Custom Color is available.





# VERBLOCK PLUS

**VERBLOCK PLUS** is Do It Yourself 100% Stainless Steel Tile with Acryl Foam Tape laminated on Stainless Steel Surface Material.



## Specification

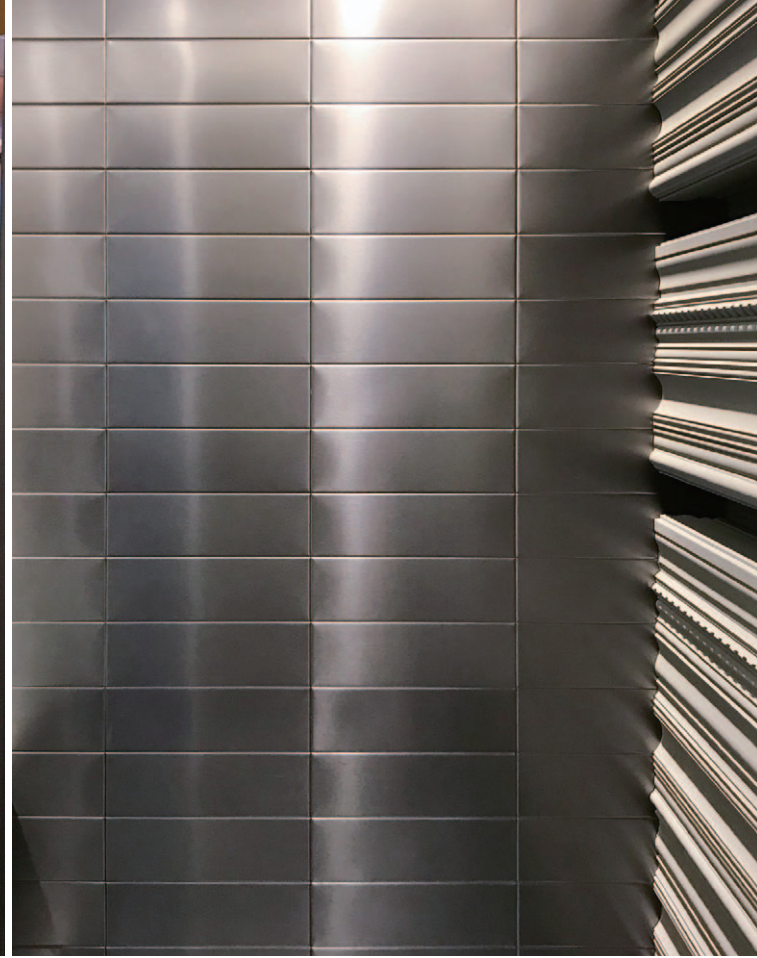
UNIT : mm

| Material       | Surface   | Back              |
|----------------|---|-------------------|
|                | Stainless Steel                                 | Acrylic Foam Tape |
| Thickness      | 0.4 - 0.6 mm                                    | 0.6 mm            |
| Width / Length | 100 x 300 (Width and Length can be negotiated.) |                   |

## Pattern & Color

※Custom Color is available.





# INOXTA-Wall

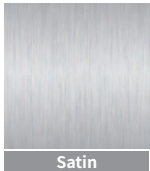
INOXTA-Wall is Use ceramic backing tiles for construction on cement walls or if they are sensitive to heat; use 3mm foam PVC as the backing material (including fire doors) for general interior use.

## Specification

UNI mm

| Material       | Surface  | ① Back 1     | ② Back 2   |
|----------------|--|--------------|--|
|                | Stainless Steel  | Ceramic Tile | PVC Foam board   |
| Thickness      | 0.4 mm   | 7 mm         | 3 mm   |
| Width / Length | Optional to Back material<br>(Width and Length can be negotiated.) | 200 x 200    | 100 x 100 / 100 x 150<br>100 x 200 / 200 x 200<br>100 x 300 / 300 x 300<br>600x100 |

## Surface Texture



Satin

## Color

※Custom color is available.



- Back Material
  - ① Ceramic Tile (7mm)
  - ② PVC Foam Board (3mm)
- High-Strength Resin Adhesive
- Surface Material (0.4mm)
  - \_Stainless Steel
- Coating
  - ① PVD Coating
  - ② NCC Coating



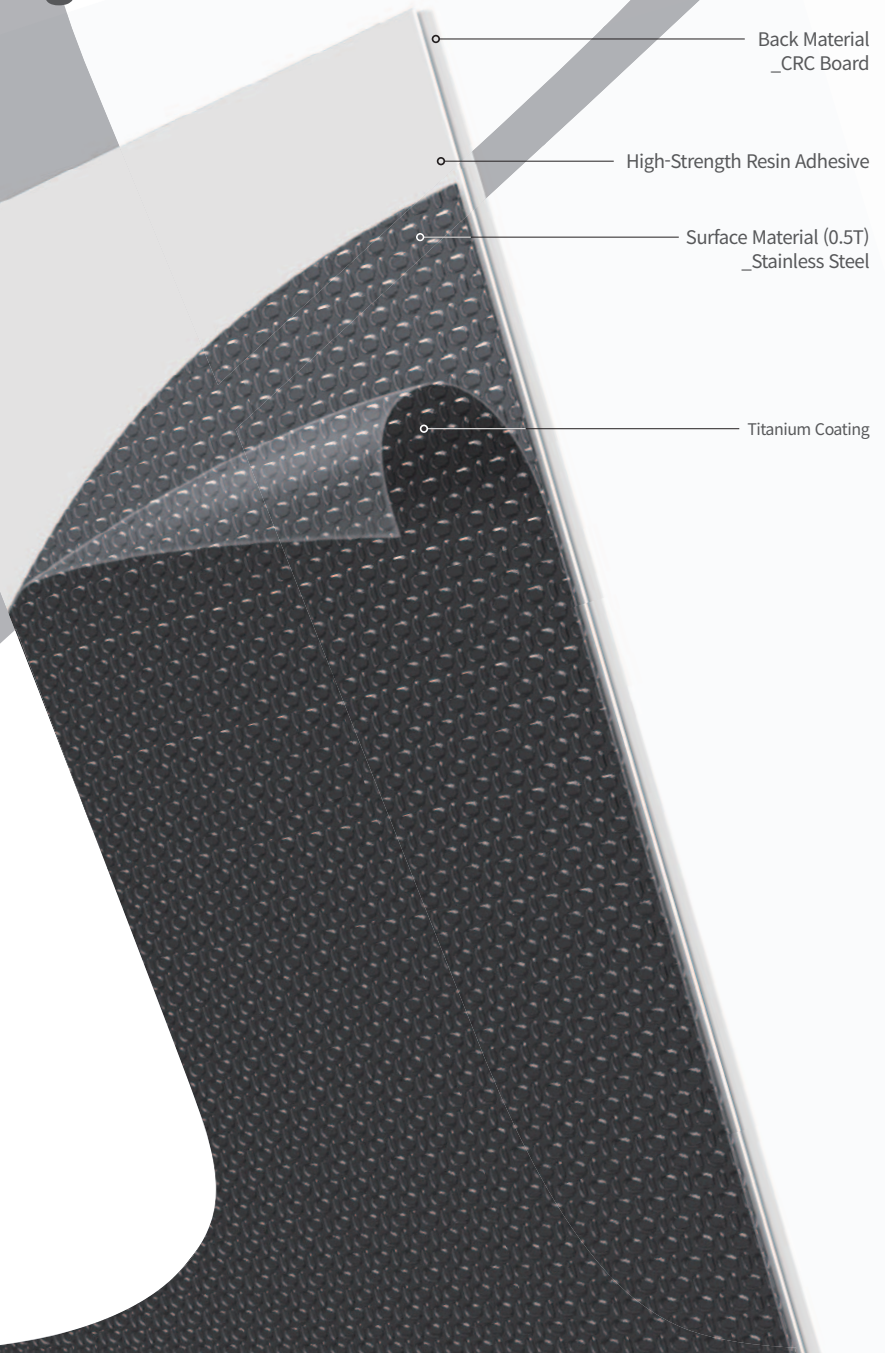


INOXTA Faire Door Reference Image



# INOXTA-Flooring

INOXTA-Flooring is 100% stainless steel flooring with a choice of stainless surfaces and backing according to the construction method.

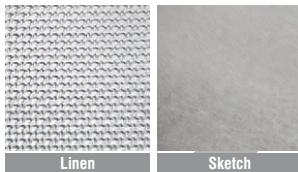


## Specification

UNIT : mm

| Material       | Surface  | Back      |
|----------------|--|-----------|
|                | Stainless Steel  | CRC Board |
| Thickness      | 0.5 mm   | 3-8 mm    |
| Width / Length | 300 x 300 / 600 x 600 (Width and Length can be negotiated) |           |

## Embo Pattern



## Color

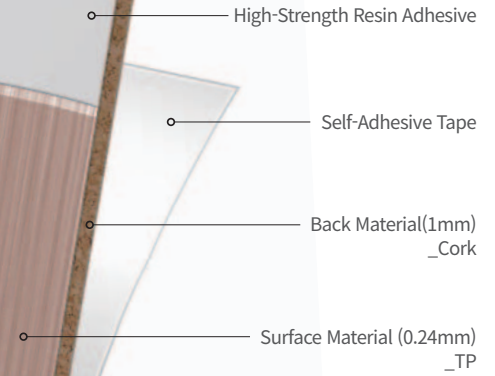
※Custom color is available.





# VER Q

VER Q is Eco-friendly wall finish with tin plated steel surface and cork on the back.



## Specification

UNIT : mm

| Material       | Surface   | Back |
|----------------|---|------|
|                | TP  | Cork |
| Thickness      | 0.24 mm   | 1 mm |
| Width / Length | 300x300 / 300x600 / 600x900 / 600x1200 (Width and Length can be negotiated) |      |

## Surface Texture



## Color

※Custom Color is available





# COLOR PIPE

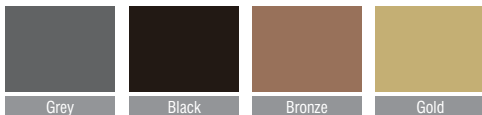


## Surface Texture



## Color

※Custom Color is available.



## Specification

| Type            | Image | Size(Ø)                                     | Thickness(mm) | Length (m)      | Polish                | Plain                 | Hair Line             |
|-----------------|-------|---|---------------|-----------------|-----------------------|-----------------------|-----------------------|
| Vertical Type   |       | 76.3  | 1.1           | Sold in 1m Unit | <input type="radio"/> | <input type="radio"/> | <input type="radio"/> |
|                 |       | 63.5  | 1.0           |                 | <input type="radio"/> | <input type="radio"/> | <input type="radio"/> |
|                 |       | 50.8  | 0.9           |                 | <input type="radio"/> | <input type="radio"/> | <input type="radio"/> |
|                 |       | 38.1  | 0.8           |                 | <input type="radio"/> | <input type="radio"/> | <input type="radio"/> |
|                 |       | 25.4  | 0.9           |                 | <input type="radio"/> | <input type="radio"/> | <input type="radio"/> |
|                 |       | 15.8  | 1.1           |                 | <input type="radio"/> | <input type="radio"/> | <input type="radio"/> |
| Twin Combi Type |       | * Polishing Gold 31.8 Cobi-Pipe<br>* 900 mm |               |                 | <input type="radio"/> | -                     | -                     |



## Verblock Photo Frame Stainless Steel Frame

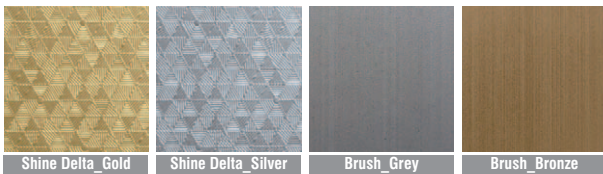


### Specification

UNIT : mm

| Material  | Size                              | Back                              |
|-----------|-----------------------------------|-----------------------------------|
|           | Stainless Steel                   | PVC Foam board/Self-Adhesive Tape |
| Thickness | 0.06 - 0.2mm                      | 3 mm                              |
| Size      | 116 x 164 / 144 x 194 / 176 x 224 |                                   |

### Embo Pattern & Color



## Color Deco Stan Stainless Steel Coloring Image

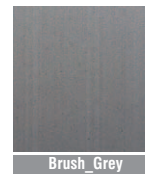


### Specification

UNIT : mm

| Material  | Surface         | Back                              |
|-----------|-----------------|-----------------------------------|
|           | Stainless Steel | PVC Foam board/Self-Adhesive Tape |
| Thickness | 0.06 mm         | 3 mm                              |
| Size      | 168 x 140       |                                   |

### Pattern & Color



43 Types  
Various Designs





## Switch Cover Stainless Steel Switch Cover



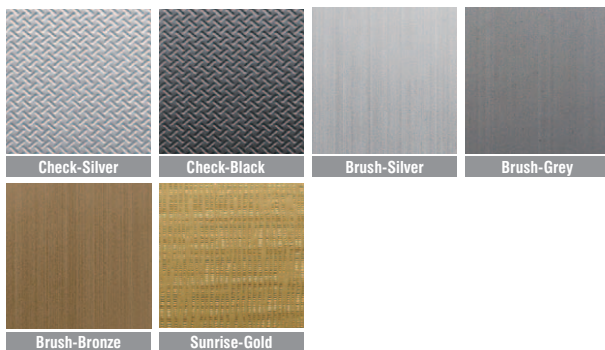
### Specification

UNIT : mm

| Material  | Surface         | Back                              |
|-----------|-----------------|-----------------------------------|
|           | Stainless Steel | PVC Foam board/Self-Adhesive Tape |
| Thickness | 0.06 - 0.2mm    | 3~8 mm                            |
| Size      | 150 x 200       |                                   |

### Pattern & Color

※Custom Color is available.



## Mixing Palette Stainless Steel Palette for Make-up Specialists



### Specification

UNIT : mm

| Material  | Surface         | Back           |
|-----------|-----------------|----------------|
|           | Stainless Steel | PVC Foam Board |
| Thickness | 0.06 mm         | 3~8 mm         |
| Size      | 128 x 90        |                |

### Pattern & Color





# DSP CEILING

**60**

INOXTA CEILING

**62**

VERNOX CEILING

**64**

VERGATE CEILING

**66**

LED VERNOX CEILING

**68**

LED INOXTA CEILING

**70**

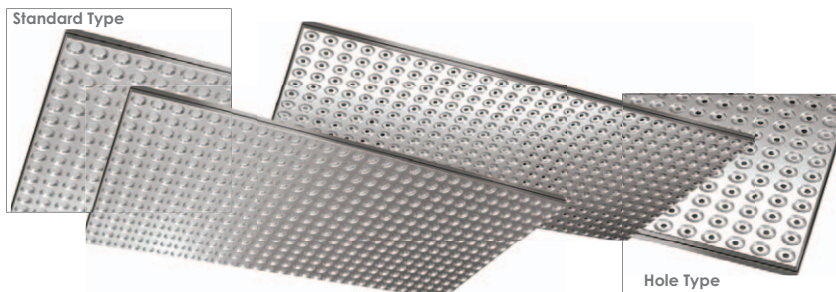
Install GUIDE

## INOXTA CEILING

### Double

#### Double Type

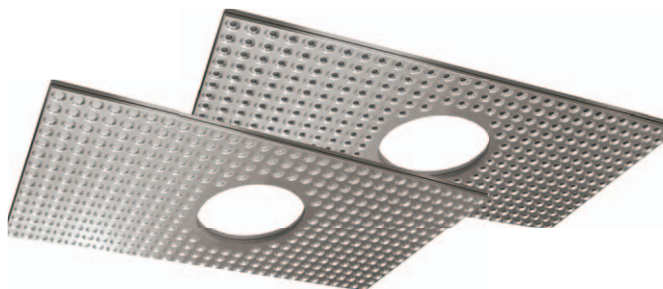
| Model No.           | CD 3600S (Standard Type) | CD 3600P (Hole Type)  |
|---------------------|--------------------------|-----------------------|
| Size                | 300 x 600                | 300 x 600(Ø 7.5 Hole) |
| Weight              | 575 (g)                  | 565 (g)               |
| Installation Method | M-bar System             | M-bar System          |



### Open-hole

#### Open-hole Type

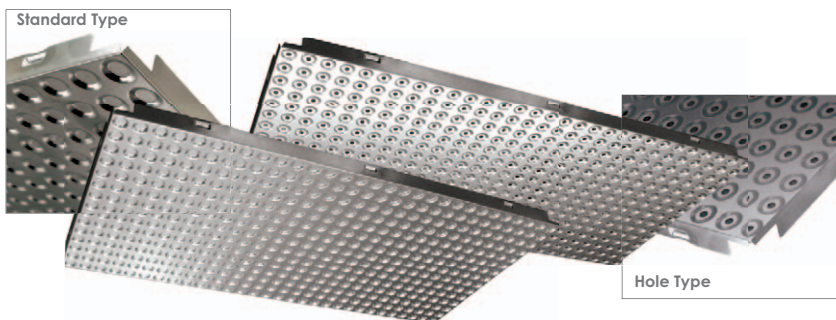
| Model No.           | CD 3600L (Standard Type) | CD 3600PL (Hole Type) |
|---------------------|--------------------------|-----------------------|
| Size                | 300 x 600                | 300 x 600(Ø 7.5 Hole) |
| Weight              | 530 (g)                  | 520 (g)               |
| Installation Method | M-bar System             | M-bar System          |



### Clip-Bar

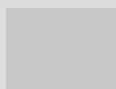
#### Clip-Bar Type

| Model No.           | CCD 3600S (Standard Type) | CCD 3600P (Hole Type) |
|---------------------|---------------------------|-----------------------|
| Size                | 300 x 600                 | 300 x 600(Ø 7.5 Hole) |
| Weight              | 510 (g)                   | 470 (g)               |
| Installation Method | Clip-bar System           | Clip-bar System       |



#### Color

※Custom Color is available.



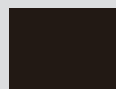
Silver



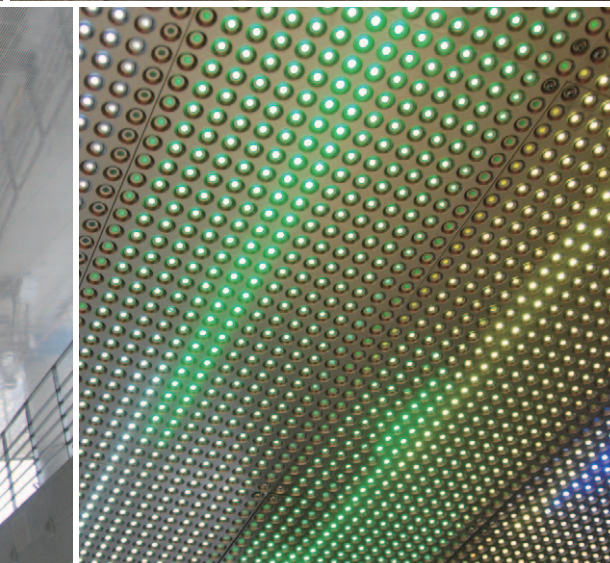
Gold



Bronze



Black



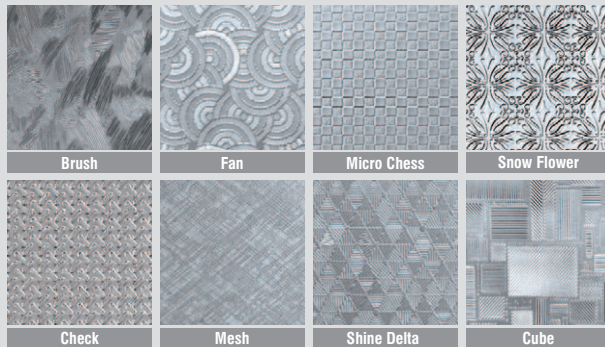
# VERNOX CEILING

## Specification

UNIT : mm

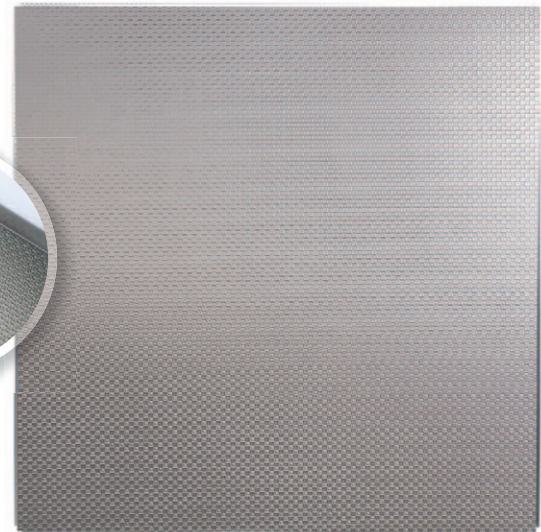
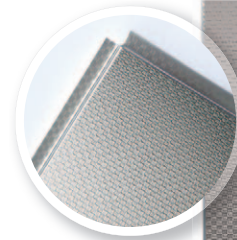
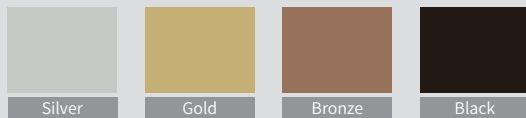
|                     |   |
|---------------------|---|
| Surface             | VERNOX (Ultra Thin Stainless Steel)           |
| Surface Thickness   | 0.06~0.09                                     |
| Back / Thickness    | ZAM 0.45                                      |
| Size                | 590 x 590 / 590 x 890 / (H) : 10 / 3.5 Ø      |
| Weight              | Standard Type 1,580 (g) / Hole Type 1,270 (g) |
| Installation Method | T-bar System                                  |

## Embo Pattern

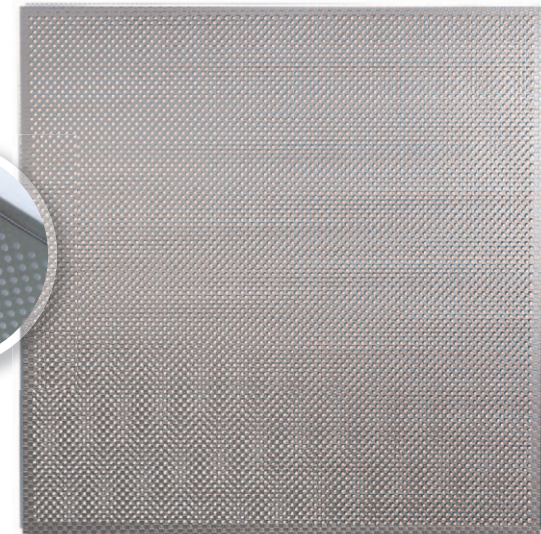
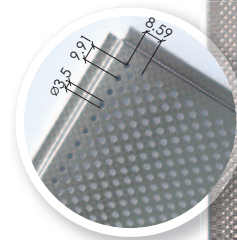


## Color

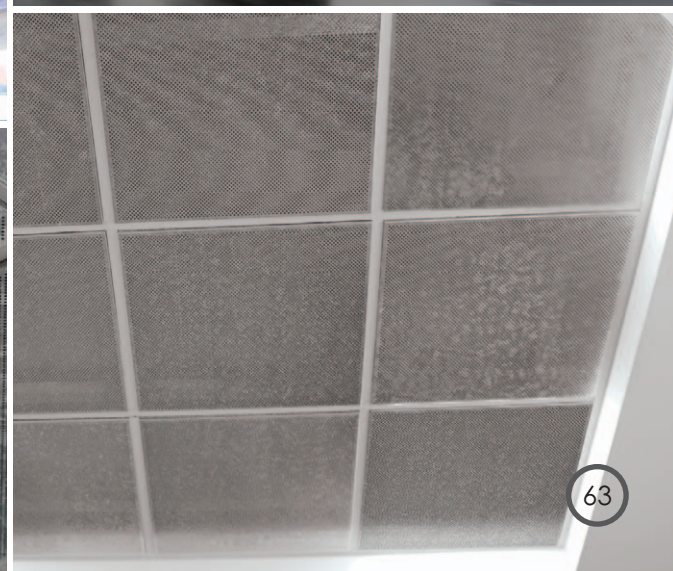
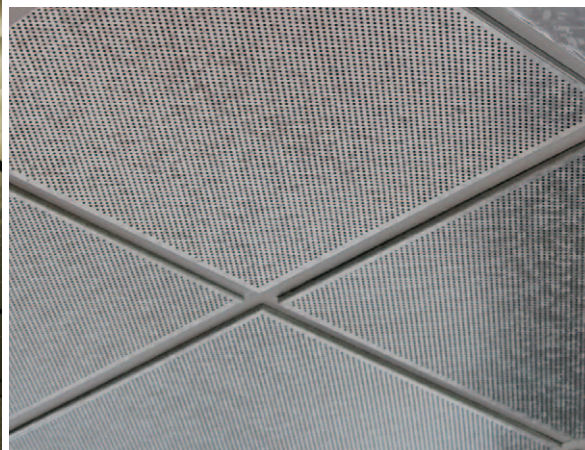
※Custom Color is available.



Standard Type



Hole Type

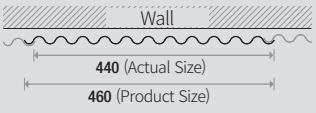


# VERGATE CEILING

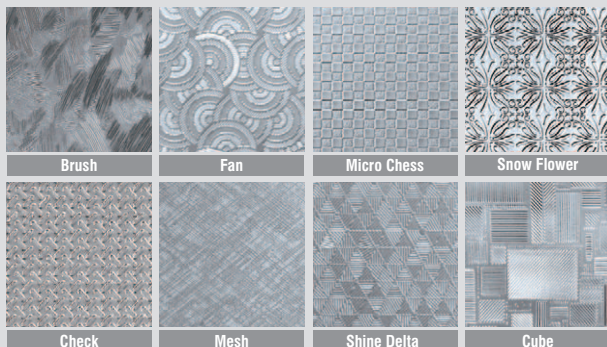
## Specification

※The size of the actual product may differ from the size after the installation due to the overlapped section at the installation.

UNIT : mm

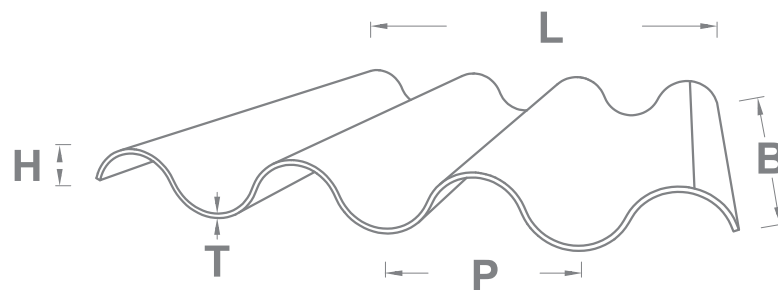
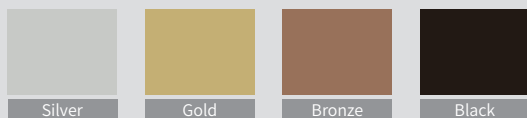
|                   |   |                                |
|-------------------|---|--------------------------------|
| Surface           | VERNOX (Ultra Stainless Steel)  |                                |
| Surface Thickness | 0.06~0.09   |                                |
| Back / Thickness  | ZAM 0.45  |                                |
| Size              |  | Length: Max 10m<br>(Hole 3.5Ø) |
|                   | 440 (Actual Size)<br>460 (Product Size)   |                                |
| Width / Length    | 2,400 (g) / 1m  |                                |

## Embo Pattern



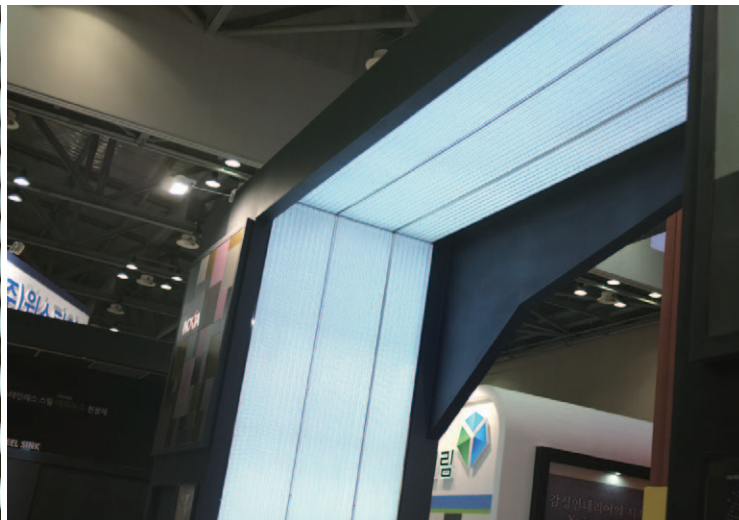
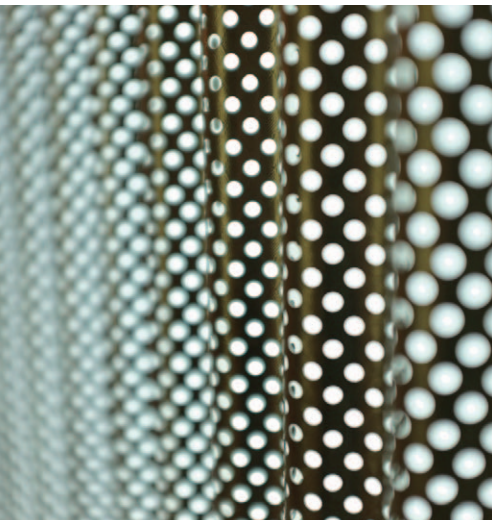
## Color

※Custom Color is available.



| Height (H) | Thickness (T) | Pitch (P) | Width (L) | Length (B)                            |
|------------|---------------|-----------|-----------|---------------------------------------|
| 14         | 0.4           | 40        | 475       | Custom Length is available. (Max 10m) |

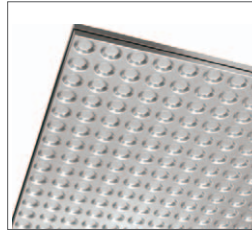
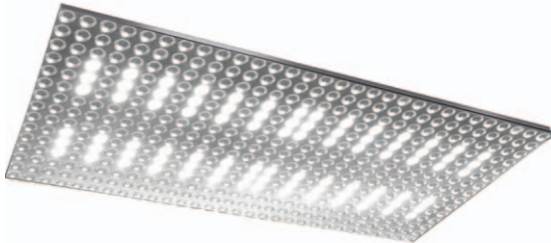




## LED INOXTA CEILING

### Double

Double Type



|                     |              |
|---------------------|--------------|
| Model No.           | CD 3600E     |
| Size                | 300 x 600    |
| Weight              | 790 (g)      |
| Installation Method | M-bar System |

#### LED Specification

|                   |                      |
|-------------------|----------------------|
| Power Input       | 220V / 60 Hz         |
| Power Output      | DC 36 V              |
| Power Consumption | White : 22~25 W      |
|                   | Warm White : 22~25 W |

#### LED Color



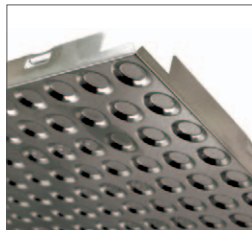
White



Warm White

### Clip-Bar

Clib-Bar Type



|                     |                 |
|---------------------|-----------------|
| Model No.           | CD 3600S        |
| Size                | 300 x 600       |
| Weight              | 1090 (g)        |
| Installation Method | Clip-bar System |

#### Color

※Custom Color is available.



Silver



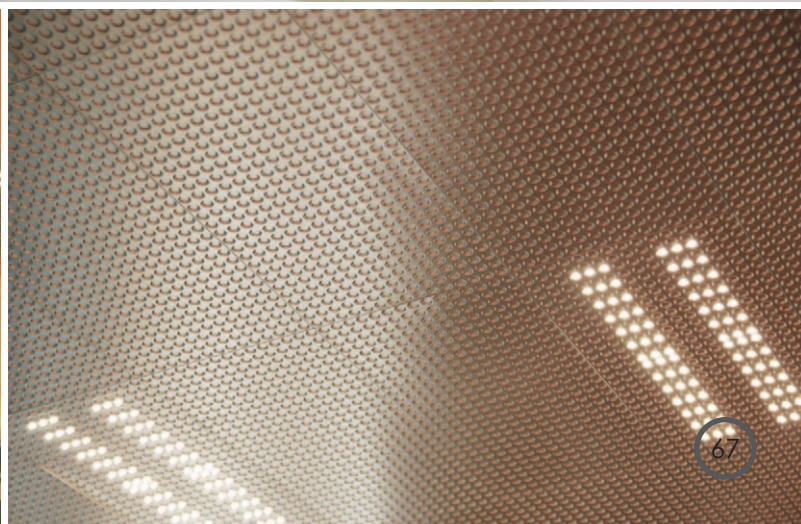
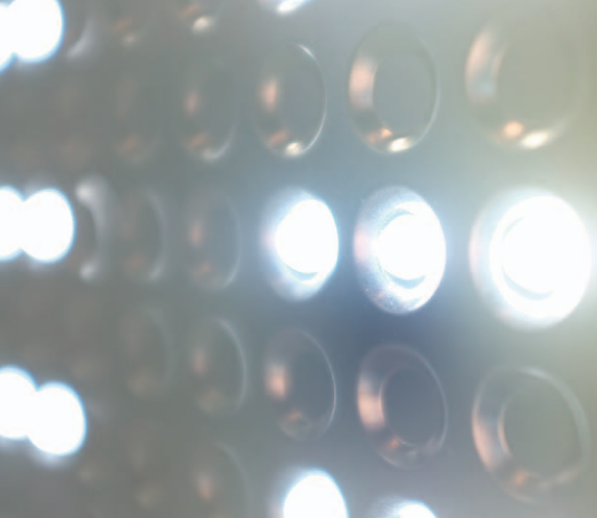
Gold



Bronze



Black



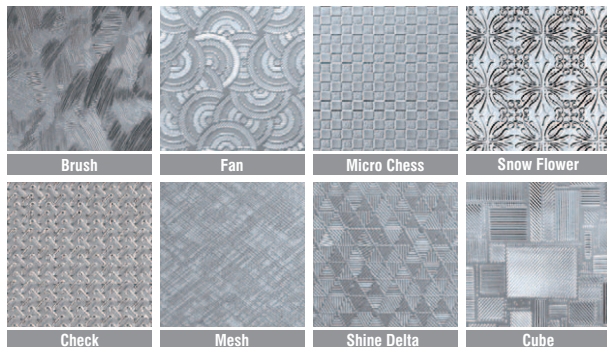
# LED VERNOX CEILING

## Specification

UNIT : mm

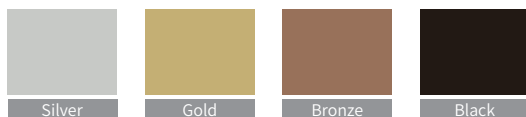
|                     |  |
|---------------------|--|
| Surface             | VERNOX (Ultra Thin Stainless Steel)      |
| Surface Thickness   | 0.06~0.09                                |
| Back / Thickness    | ZAM 0.45                                 |
| Size                | 590 x 590 / 590 x 890 / (H) : 10 / 3.5 Ø |
| Weight              | 1,270 (g)                                |
| Installation Method | T-bar System                             |

## Embo Pattern



## Color

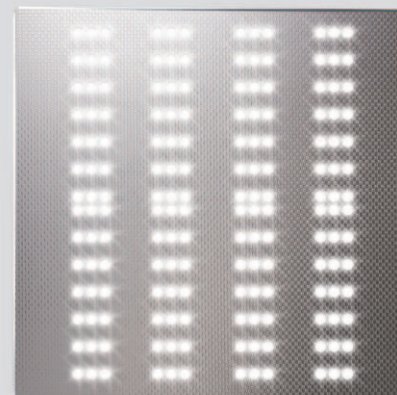
※Custom Color is available.



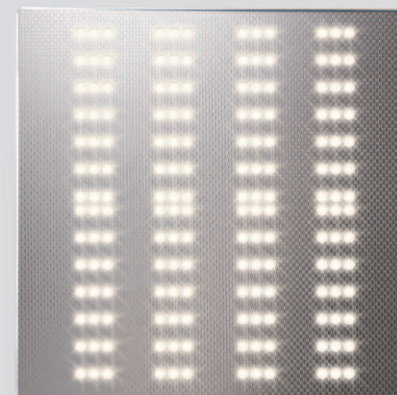
## LED Specification

|                   |                      |
|-------------------|----------------------|
| Power Input       | 220V / 60 Hz         |
| Power Output      | DC 36 V              |
| Power Consumption | White : 22~25 W      |
|                   | Warm White : 22~25 W |

## LED Color



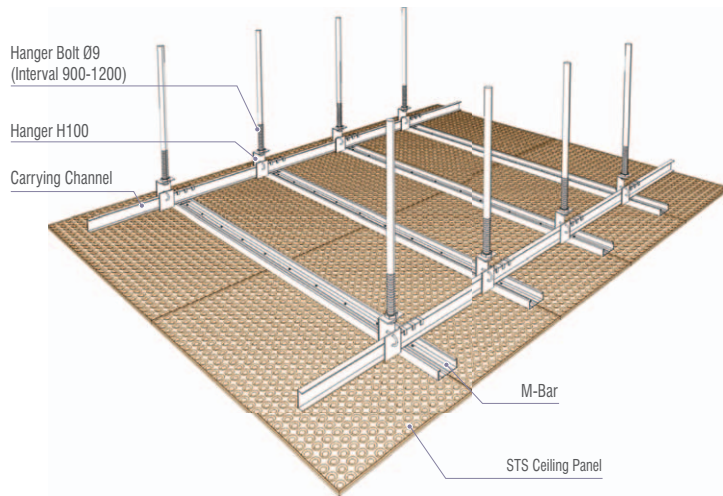
White



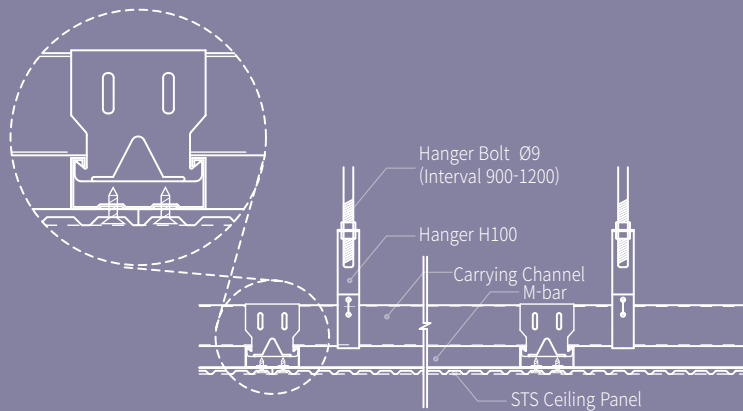
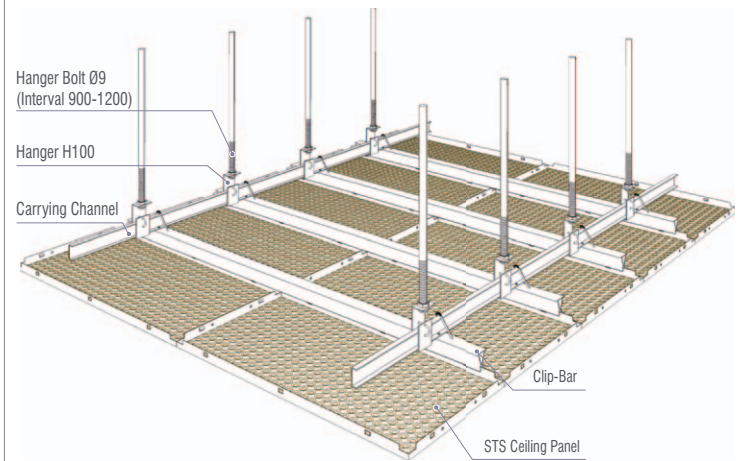
Warm White



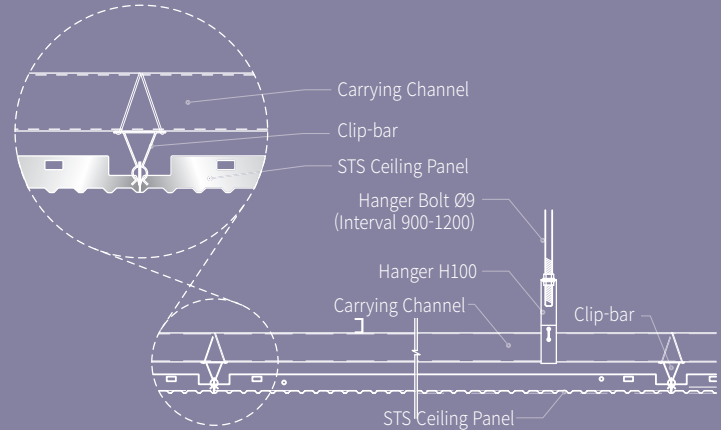
## M-BAR Installation



## CLIP-BAR Installation

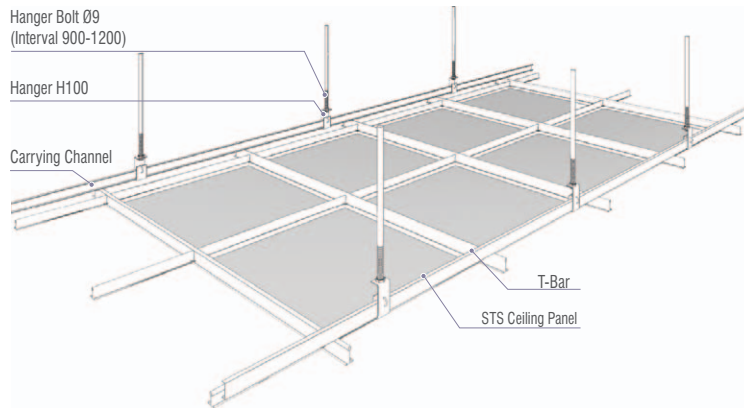


1. After the measurement, use Hanger Pin or Bolt to fix the Carrying Channel on the Assembly of Stud Bolts and Straps, which were fixed by the Strong Anchor.
2. M-Bar Should be installed about 30 cm apart at right angles to the Carrying Channel.
3. Secure the M-Bar and the Carrying Channel using the M-Bar Clip.
4. After the M-Bar is installed, fix the Ceiling panels to the M-Bar from the baseline using designated Screw.

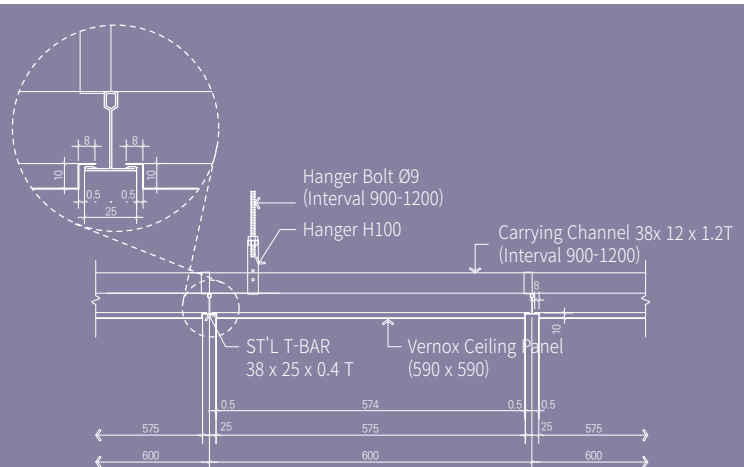
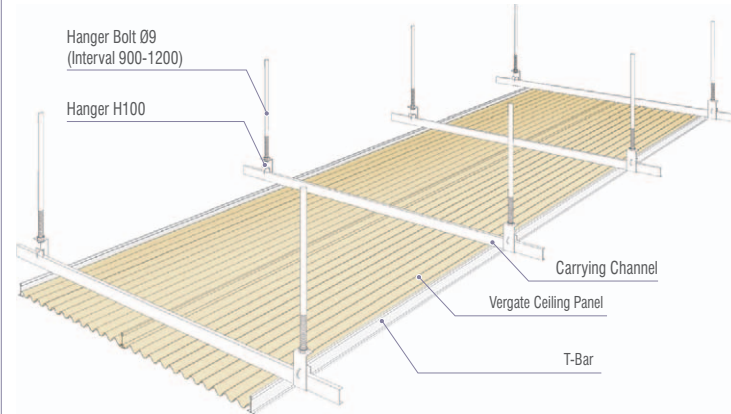


1. After the measurement, use Hanger Pin or Bolt to fix the Carrying Channel on the Assembly of Stud Bolts and Straps, which were fixed by the Strong Anchor.
2. Clip-Bar Should be installed about 30 cm apart at right angles to the Carrying Channel.
3. Secure the Clip-Bar and the Carrying Channel using the Clip-Bar Clip.
4. After the Clip-Bar is installed, fix the embossed section of DSP Ceiling panels to the Clip-Bar groove from the baseline.

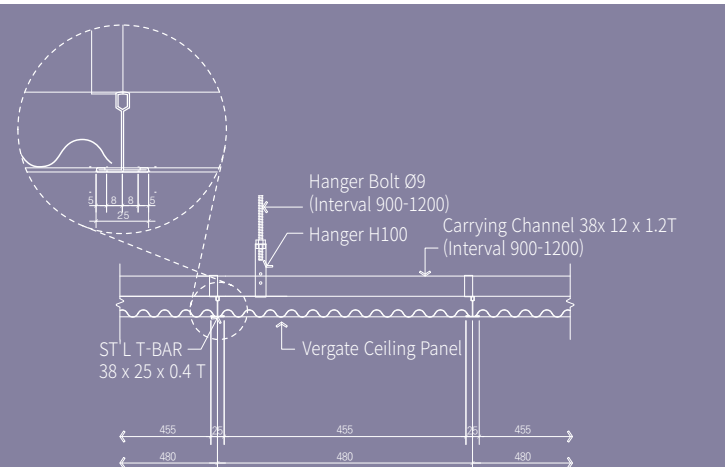
## T-BAR VERNOX Installation



## T-BAR VERGATE Installation



1. After the measurement, use Hanger Pin or Bolt to fix the Carrying Channel on the Assembly of Stud Bolts and Straps, which were fixed by the Strong Anchor.
2. Main T-Bar Should be installed about 60 cm apart at right angles to the Carrying Channel.
3. Secure the Main T-Bar and the Carrying Channel using the C/T - Clip.
4. Cross T-Bar should be installed about 60cm apart at right angles to the Main T-Bar.
5. After installation of all the T-Bars, complete the installation by placing the VERNOX Ceiling Panels on the T-Bar Flap.



1. After the measurement, use Hanger Pin or Bolt to fix the Carrying Channel on the Assembly of Stud Bolts and Straps, which were fixed by the Strong Anchor.
2. Main T-Bar Should be installed about 60 cm apart at right angles to the Carrying Channel.
3. Secure the Main T-Bar and the Carrying Channel using the C/T - Clip.
4. Cross T-Bar should be installed about 60cm apart at right angles to the Main T-Bar.
5. After installation of all the T-Bars, complete the installation by placing the VERGATE Ceiling Panels on the T-Bar Flap.

---

### Marketing Headquarter

#808 Woolim W-City, 9-22, Pangyo-ro,  
255 Beon-gil, Bundang-gu, Seongnam-si,  
Gyeonggi-do, Korea  
**T** 031 - 628 - 8700    **F** 031 - 628 - 8707  
**E** dsp@daejindsp.com

---

### Headquarter / Factory

439-24 Jangjae-Ro, Saenglim-Myun, Gimhae-  
city, Gyeongnam-Province, Korea  
**T** 055 - 323 - 8521    **F** 031 - 327 - 5060



[www.colorstainless.com](http://www.colorstainless.com)