



# Canyon Point Area Trails

## Apache-Sitgreaves National Forests

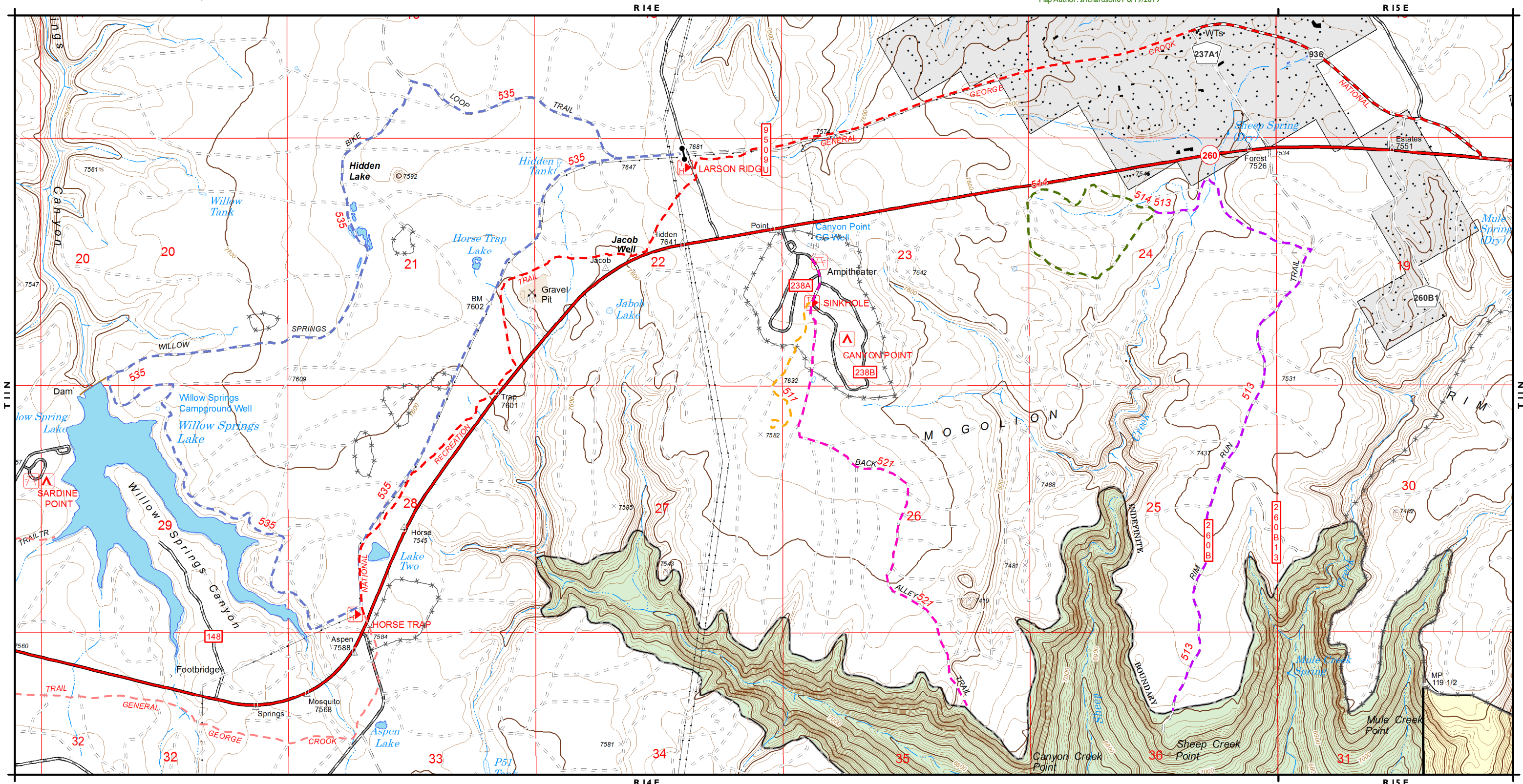
### Black Mesa Ranger District

Ph. 928-535-7300; www.fs.fed.us/r3/asnf

#### Disclaimer

The USDA Forest Service uses the most current and complete data available. GIS data and product accuracy may vary. Using GIS products for purposes other than those for which they were intended may yield inaccurate or misleading results. The USDA Forest Service reserves the right to correct, update, modify, or replace GIS products without notification. This map is not a legal land line or ownership document. Public lands are subject to change and leasing, and may have access restrictions; check with local offices. Obtain permission before entering private land.

Map Author: srichardson01 8/19/2019



#### Canyon Point Area Trails

- General Crook (140)
- Sinkhole (511)
- Rim Run (513)

- Spring Loop (514)
- Back Alley (521)
- Willow Springs Bike Loop (535)
- Other FS Trail

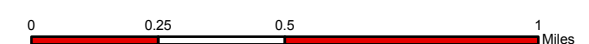
- Cattle guard
- Gate
- Fence
- Apache-Sitgreaves NFs Land
- Other Ownership

- Other National Forest Land
- Indian Reservation
- Bureau of Land Management
- State Land
- Other Ownership
- Water Body

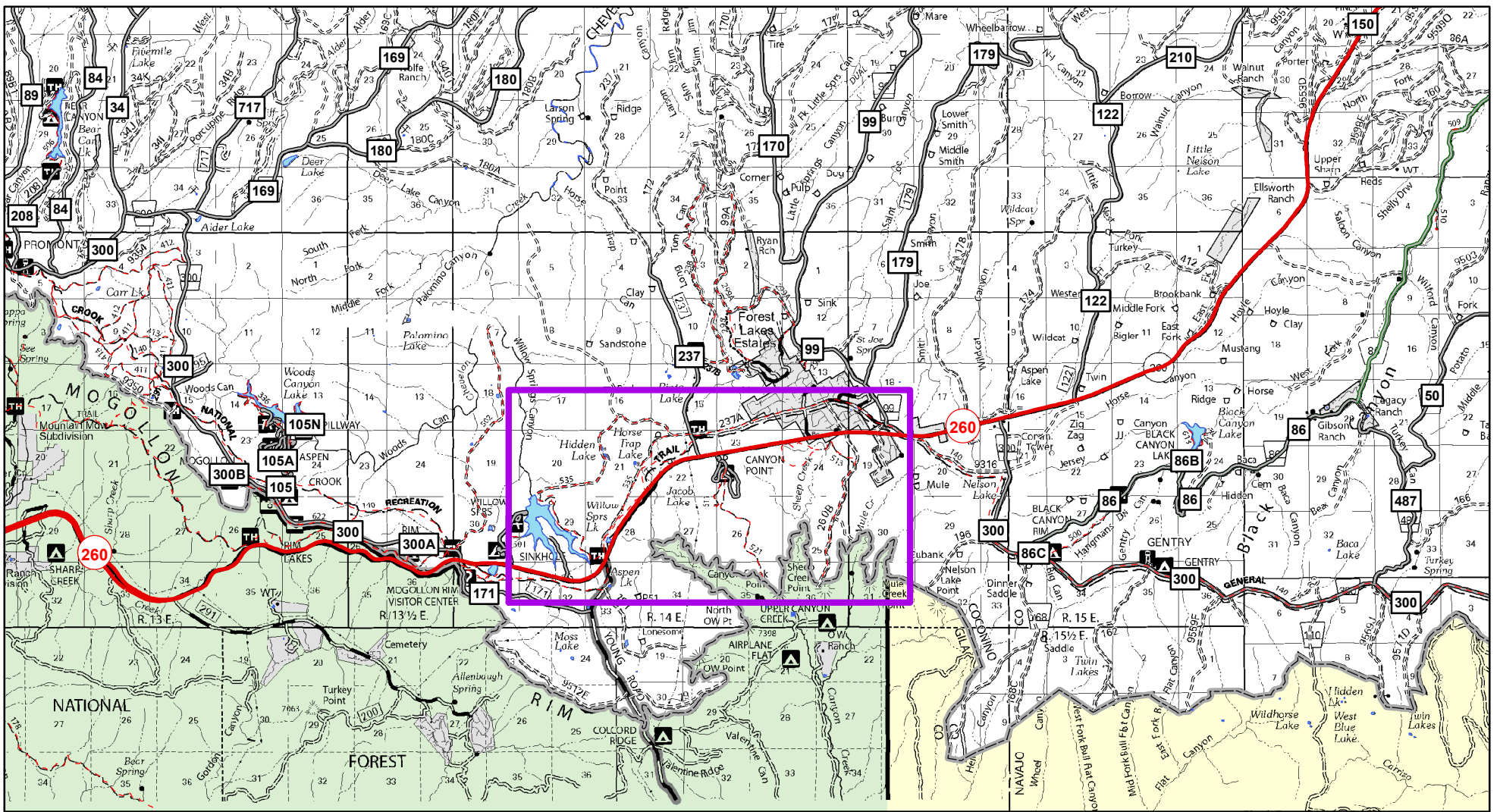
- US / State Highways
- High Degree User Comfort
- Mod Degree User Comfort
- Suitable for Passenger Car
- High Clearance Vehicle
- Closed Road



NAD 83  
UTM12N







Trails making up the Canyon Point Area Trails are generally located South West of Forest Lakes. Trails located South of Hiway 260 were affected by the Rodeo-Chediski Fire of 2002.

Trail #	Trail Name	Miles	Activities	Difficulty	Notes	Profile
140	General Crook Trail	6.0 Portion shown on Canyon Point Area Trails map. (Total trail length = 58.4)		More Difficult	The General Crook Trail is Arizona's first designated State Historic Trail; a 113 mile trail built by Gen. George Crook in the 1870's, during the Apache War. Crooks trail crosses the Black Mesa Ranger District through mixed ponderosa pine & Gambel oak. On this map, the trail can be accessed from Horse Trap Trailhead and Larson Ridge Trailhead. Portion of trail on Canyon Point Area Trails map extends from Horse Trap Trailhead on west side, to junction of FR 99 with Hiway 260 on east side.	<p>Profile depicted on graph is just the portion of General Crook Trail shown on the Canyon Point Area Trails map.</p>
511	Sinkhole Trail	0.7		Easiest	Access this trail in Canyon Point Campground loop B. Users quickly leave behind the campground. Visitors traverse the lip of a sinkhole and then descend steeply to the bottom where the environment changes dramatically. The sinkhole and the surrounding area were affected by the Rodeo-Chediski Fire.	
513	Rim Run Trail	2.9		More Difficult	This trail begins at a point south of Forest Lakes. Originally developed as a cross country ski trail. The trail follows an old logging road out to the Mogollon Rim, where a great overlook view is provided. The Spring Loop trail takes off from this trail.	
514	Spring Lop Trail	1.5		Moderate	This trail begins on FR 50, approx. 1.4 miles from junction with Hiway 260, crosses the Maze Trail (524) and ends on the Ross Draw Trail (529) crossing through areas more devastated by the fire than along other trails in this area.	
521	Back Alley Trail	0.9		Easiest	Access this trail from Canyon Point Campground loop B. The trail takes you to a point which affords a unique vista off the edge of the Mogollon Rim, a common boundary of the Sitgreaves and Tonto National Forests.	
535	Willow Springs Bike Loop	7.9		More Difficult	This trail loops from the Larson Ridge Trailhead (vault toilet), off FR 237, or the Horse Trap Trailhead, off Hiway 260. This trail travels through cool pines and aspen. The western section of the trail parallels the shoreline of Willow Springs Lake.	