



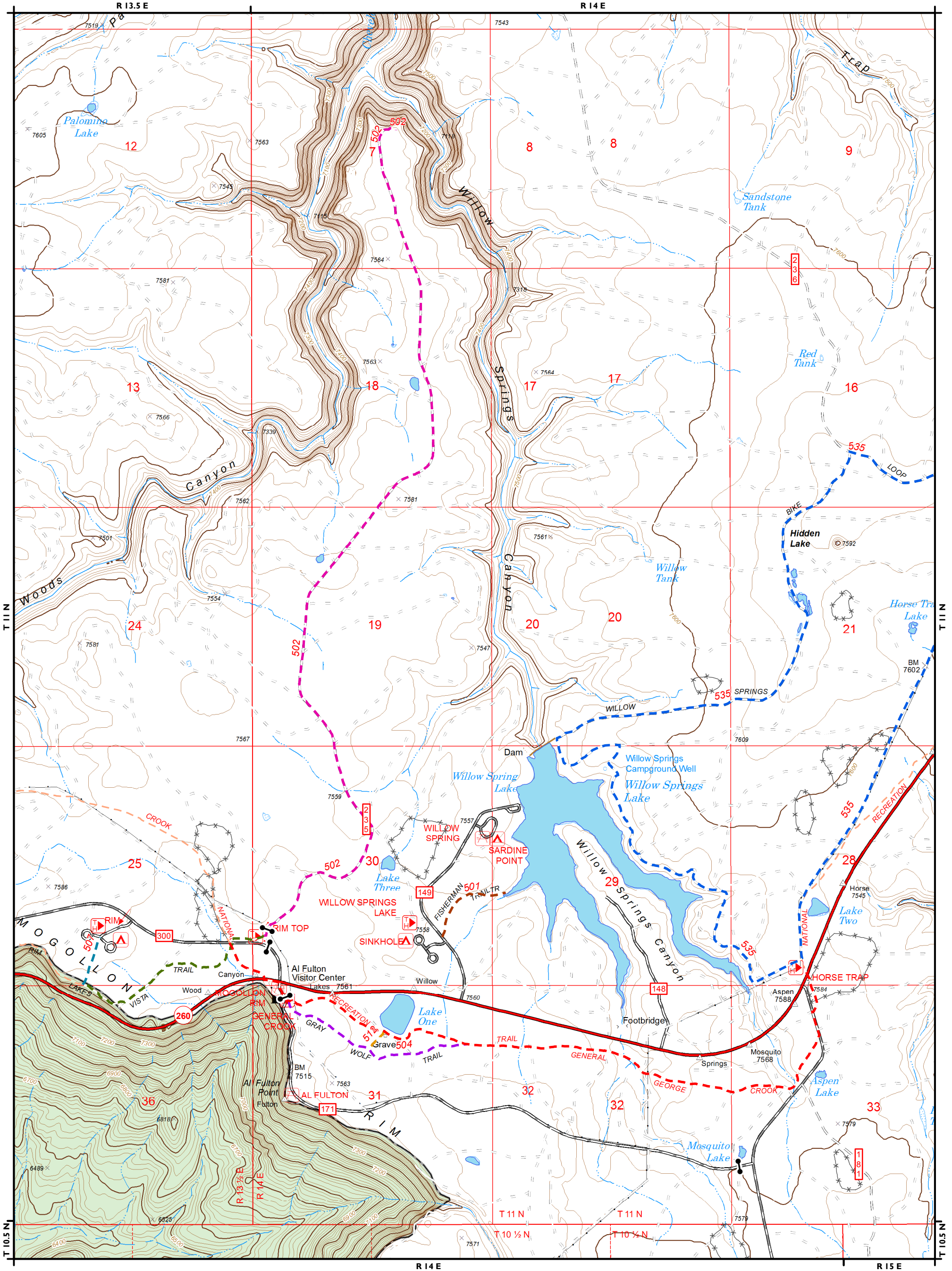
Willow Springs Area Trails

Apache-Sitgreaves National Forests
Black Mesa Ranger District

Ph. 928-535-7300; www.fs.fed.us/r3/asnf

Disclaimer

The USDA Forest Service uses the most current and complete data available. GIS data and product accuracy may vary. Using GIS products for purposes other than those for which they were intended may yield inaccurate or misleading results. The USDA Forest Service reserves the right to correct, update, modify, or replace GIS products without notification. This map is not a legal land line or ownership document. Public lands are subject to change and leasing, and may have access restrictions; check with local offices. Obtain permission before entering private land.
Map Author: srichardson01 8/16/2019



Willow Springs Area Trails

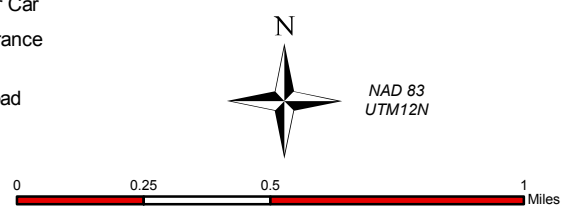
- General Crook (140)
- Fisherman (501)
- 235 Road (502)
- Gray Wolf (504)

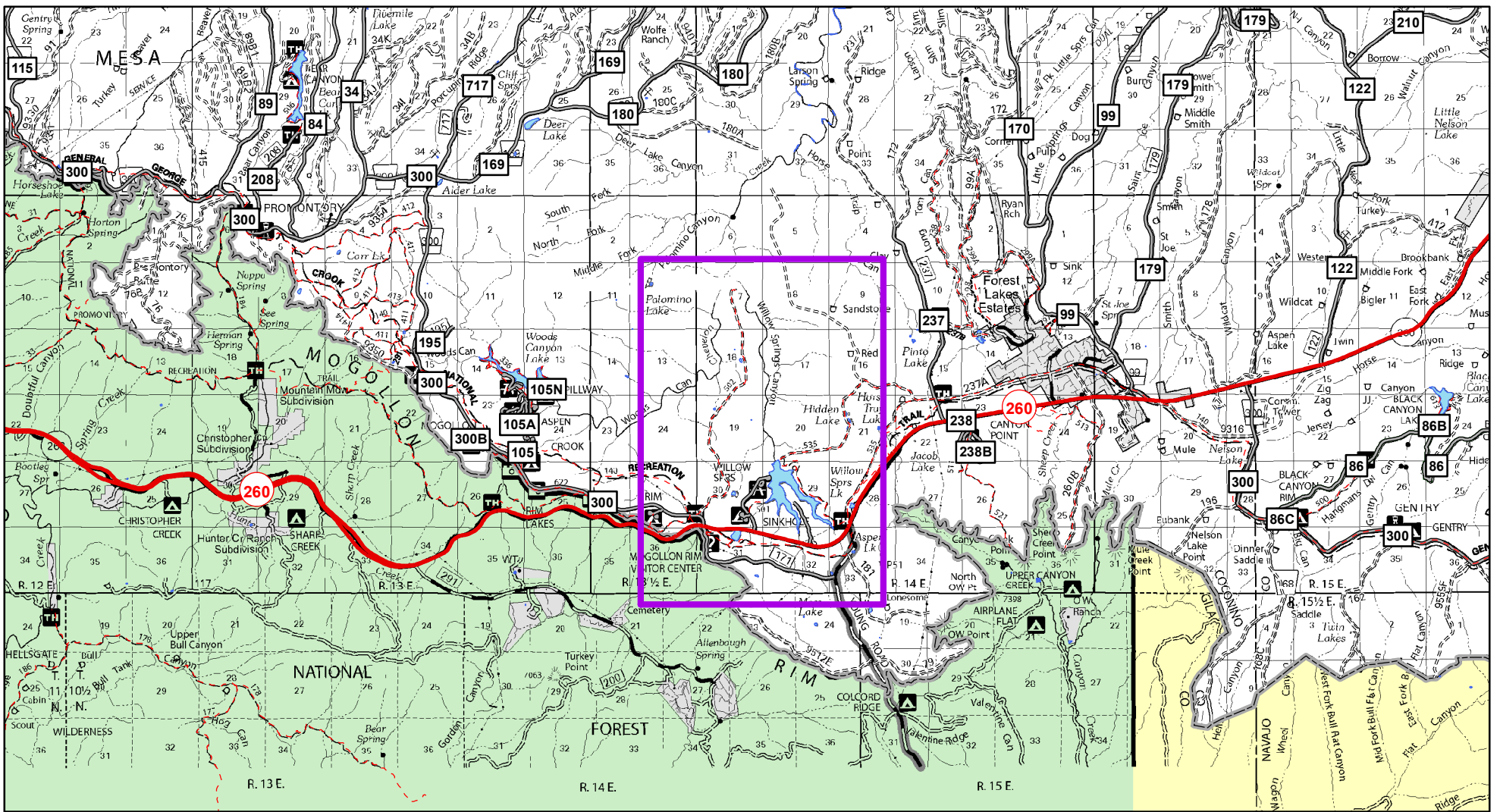
- Rim Campground (507)
- Al Fulton (512)
- Willow Springs Bike Loop (535)
- Rim Lakes Vista (622)
- Other FS Trail

- Cattleguard
- Gate
- Fence
- Apache-Sitgreaves National Forests Land
- Other Ownership

- Other National Forest Land
- Indian Reservation
- Bureau of Land Management
- State Land
- Other Ownership
- Water Body

- US / State Highways
- High Degree User Comfort
- Mod Degree User Comfort
- Suitable for Passenger Car
- High Clearance Vehicle
- Closed Road





Trails making up the Willow Springs Area Trails are located in the area of Willow Springs Lake.

Trail #	Trail Name	Miles	Activities	Difficulty	Notes	Profile
140	General Crook Trail	3.2 Portion shown on Willow Springs Area Trails map. (Total trail length on Black Mesa = 58.4 miles)		More Difficult	The General Crook Trail is Arizona's first designated State Historic Trail; a 113 mile trail built by Gen. George Crook in the 1870's, during the Apache War. Crook's trail crosses the Black Mesa Ranger District through mixed ponderosa pine & Gambel oak. On this map, the trail can be accessed from FR 300 (parking available at Rim Top trailhead), Mogollon Rim trailhead and Horse Trap Trailhead. Portion of trail on Willow Springs Area Trails map extends from junction with FR 300 (near Rim Tp trailhead) west side, to Horse Trap Trailhead on east side.	<p>Profile depicted on graph is just the portion of General Crook Trail shown on the Willow Springs Area Trail map.</p>
501	Fisherman Trail	0.4		Easiest	This trail travels between Willow Springs Trailhead and the shore of Willow Springs Lake. This relatively short trail provides access to potentially secluded areas of the lake's shoreline. (Vault toilet at Lake boat launch)	
502	235 Road Trail	4.2		More Difficult	This trail travels from Rim Top Trailhead (vault Toilet) to a view of the confluence of Woods Canyon and Willow Springs Canyon which marks the beginning of Chevelon Canyon. Wildlife such as elk and deer may be spotted along this trail, which is located in a Wildlife Habitat Area and is closed to motorized vehicles.	
504	Gray Wolf Trail	0.9		Easiest	The Gray Wolf Trail starts at the Crook Trailhead, near Mogollon Rim Visitor Center (vault toilet, seasonal). It connects to the General Crook Trail to form a 2 mile loop or with the Al Fulton Trail to form a 1 mile loop trail. The Apaches called General Crook "Grey Wolf".	
507	Rim Campground Trail	0.2		Easiest	Trail begins at the Rim Trailhead, within the Rim campground and connects to the Rim Lakes Vista Trail which travels along the Mogollon Rim for some spectacular views.	
512	Al Fulton Trail	0.1		Easiest	This trail connects the General Crook Trail and the Gray Wolf Trail. It provides a view of the historic Al Fulton gravesite. Fulton, like those men buried along the Hangman's Trail, was a casualty of the Pleasant Valley War.	
535	Willow Springs Bike Loop Trail	7.9		More Difficult	This trail loops from the Larson Ridge Trailhead (vault toilet), off FR 237, or the Horse Trap Trailhead, off Hiway 260. This trail travels through cool pines and aspen. The western section of the trail parallels the shoreline of Willow Springs Lake. Only a portion of this trail is shown on this map, see the Canyon Point Area Trails map for this trail.	
622	Rim Lakes Vista Trail	0.9 Total trail length = 4.3 miles		Easier	This trail begins at the Rim Top Trailhead. The portion displayed on this map connects to the Rim Campground trail. The Rim Lakes Vista Trail continues on following the Mogollon Rim where spectacular vistas are afforded.	