

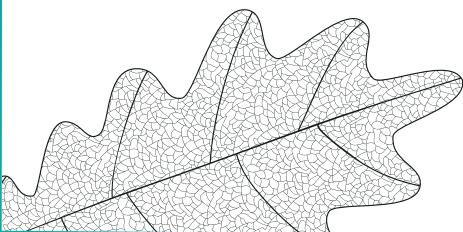
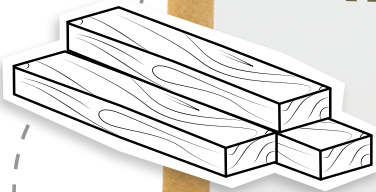
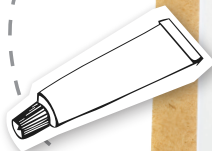


Forestry England



Fantastic forests

Forests are incredible places for lots of reasons. They provide homes for wildlife, a place to explore for you and your family, and they provide wood which we use in our everyday lives.



Look around you



Can you find 5 things that come from trees or are made from wood?

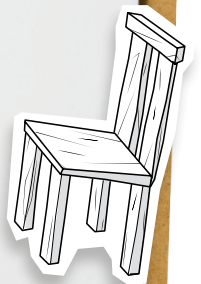
1. _____

2. _____

3. _____

4. _____

5. _____

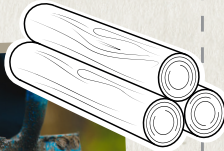




Forestry England



Wood products can have a long life and are often reused or recycled again and again. In fact, wood is one of the most sustainable materials and is a low-carbon alternative to plastic, concrete and steel.



When we harvest trees for wood, we plant more to make sure the forest's lifecycle continues.

How many trees do you think Forestry England has planted in the last 100 years?

- a. One hundred thousand
- b. Ten million
- c. One billion

(c - one billion)



Every part of a tree can be used to make different products.

The parts we leave behind rot down to create soils that feed the next generation of forests, even log piles make great places for invertebrates, like beetles, to hide in!



Can you find all 10 forestry words in the word search?

How many of them do you know?

- Woodland** - An area covered in trees
- Bark** - The tough protective outer layer of a tree trunk
- Evergreen** - A tree that has leaves throughout the year
- Habitat** - The natural home of a plant or animal
- Sapling** - A young tree
- Trunk** - The main woody stem of a tree
- Ranger** - A person who works in the forest, looking after the trees
- Nursery** - A place where new trees are grown before they are planted in the forest
- Timber** - Wood that is ready to build with
- Pine** - An evergreen tree with long needle-shaped leaves

E	S	A	P	L	I	N	G	R	T
S	V	R	B	C	M	R	E	A	W
Y	Y	E	D	A	E	E	T	N	W
P	N	M	R	B	R	I	P	G	O
G	S	U	M	G	B	K	I	E	O
N	F	I	R	A	R	Q	N	R	D
G	T	G	H	S	G	E	E	E	L
T	R	U	N	K	E	B	E	T	A
E	H	A	G	Y	S	R	W	N	N
G	M	U	X	U	E	Q	Y	Q	D

