

# WESTBOROUGH ESTATES

*A Community for YOU.*



## Community Highlights

- 0.5 - 1.0 acre home sites
- Underground utilities including public water, sewer, electric, gas, phone, & cable
- Curbed concrete streets
- 2 miles west of Troy
- 20 miles from St. Charles County
- Neighborhood atmosphere with planned social events

- 2,000 sqft. minimum on Ranch homes
- 2,200 sqft. minimum on Spec Ranch homes
- 700 sqft. minimum attached garage
- 70% minimum brick, rock, or stone fronts

*\*Complete list of restrictions available upon request.*

## Community Restrictions

**For more info, contact:**

Brandi Wommack: 636.697.7881

[brandi@arne-homes.com](mailto:brandi@arne-homes.com)



**ARNE HOMES**  
CUSTOM CRAFTED HOMES

  
**MEYER & COMPANY**  
REAL ESTATE *and* AUCTIONS



A COMMUNITY FOR YOU

Plat I and II

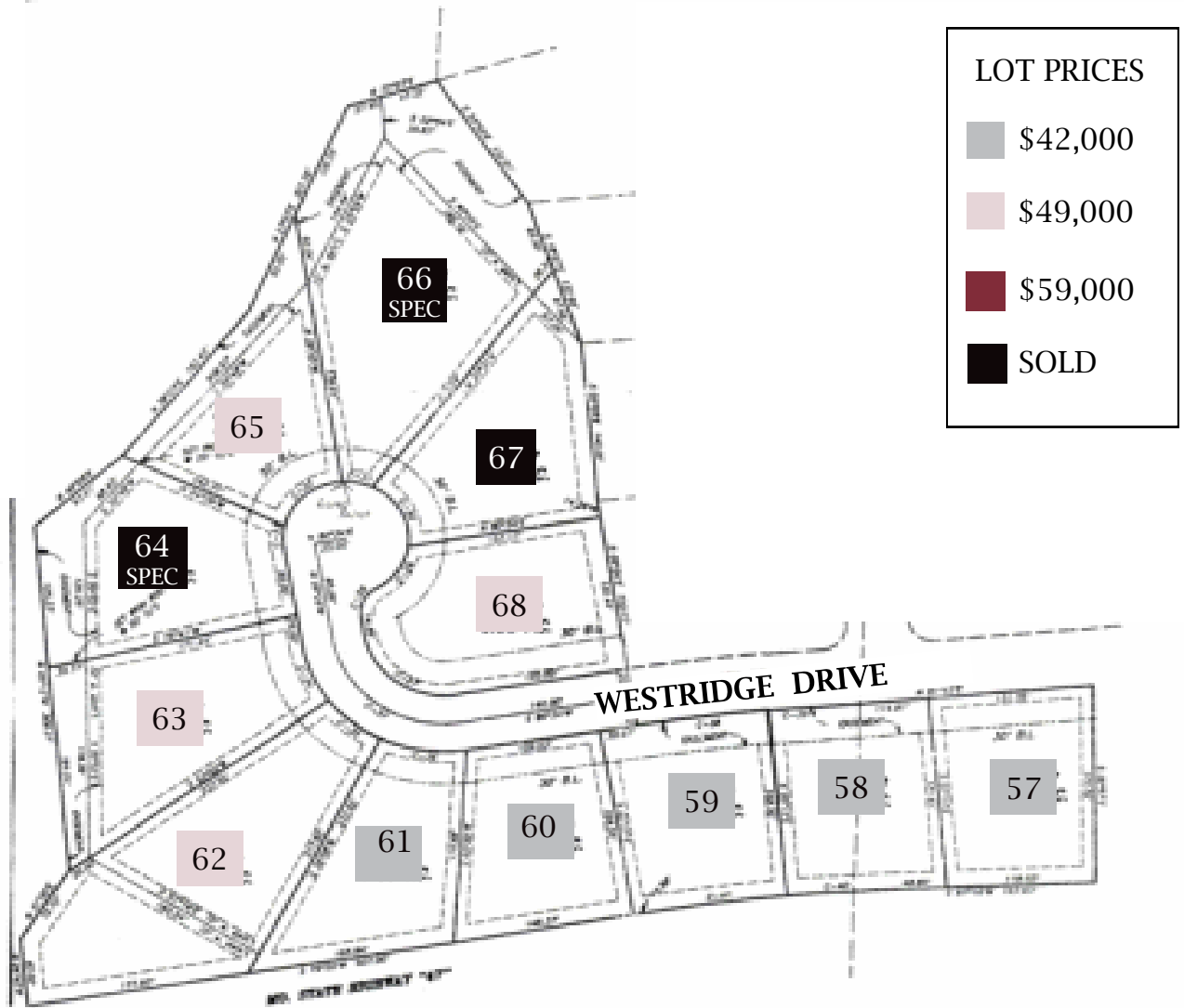


For more info, contact:  
 Brandi Wommack: 636.697.7881  
[brandi@arne-homes.com](mailto:brandi@arne-homes.com)



A COMMUNITY FOR YOU

Plat III (A)



ARNE HOMES  
CUSTOM CRAFTED HOMES



For more info, contact:

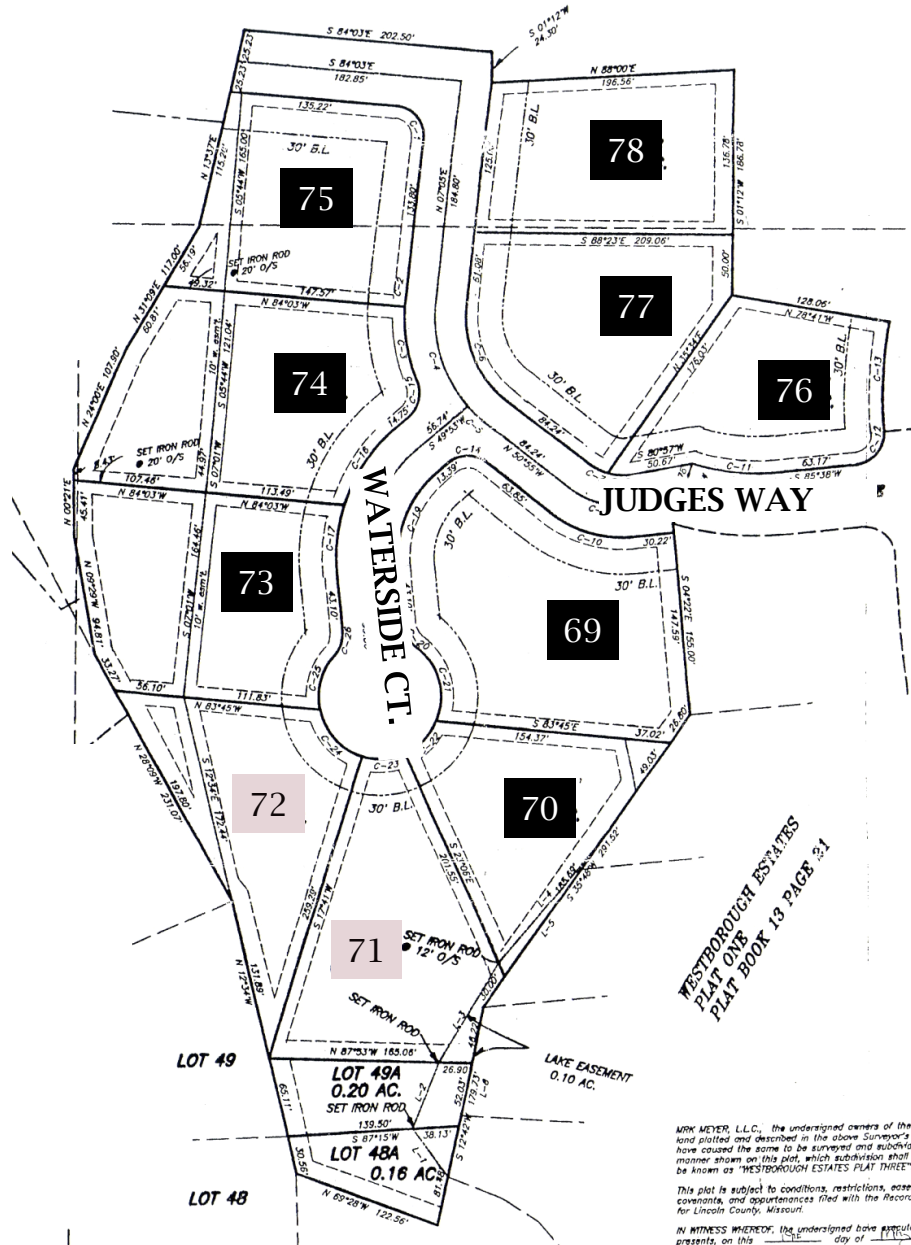
Brandi Wommack: 636.697.7881

brandi@arne-homes.com



A COMMUNITY FOR YOU

Plat III (B)

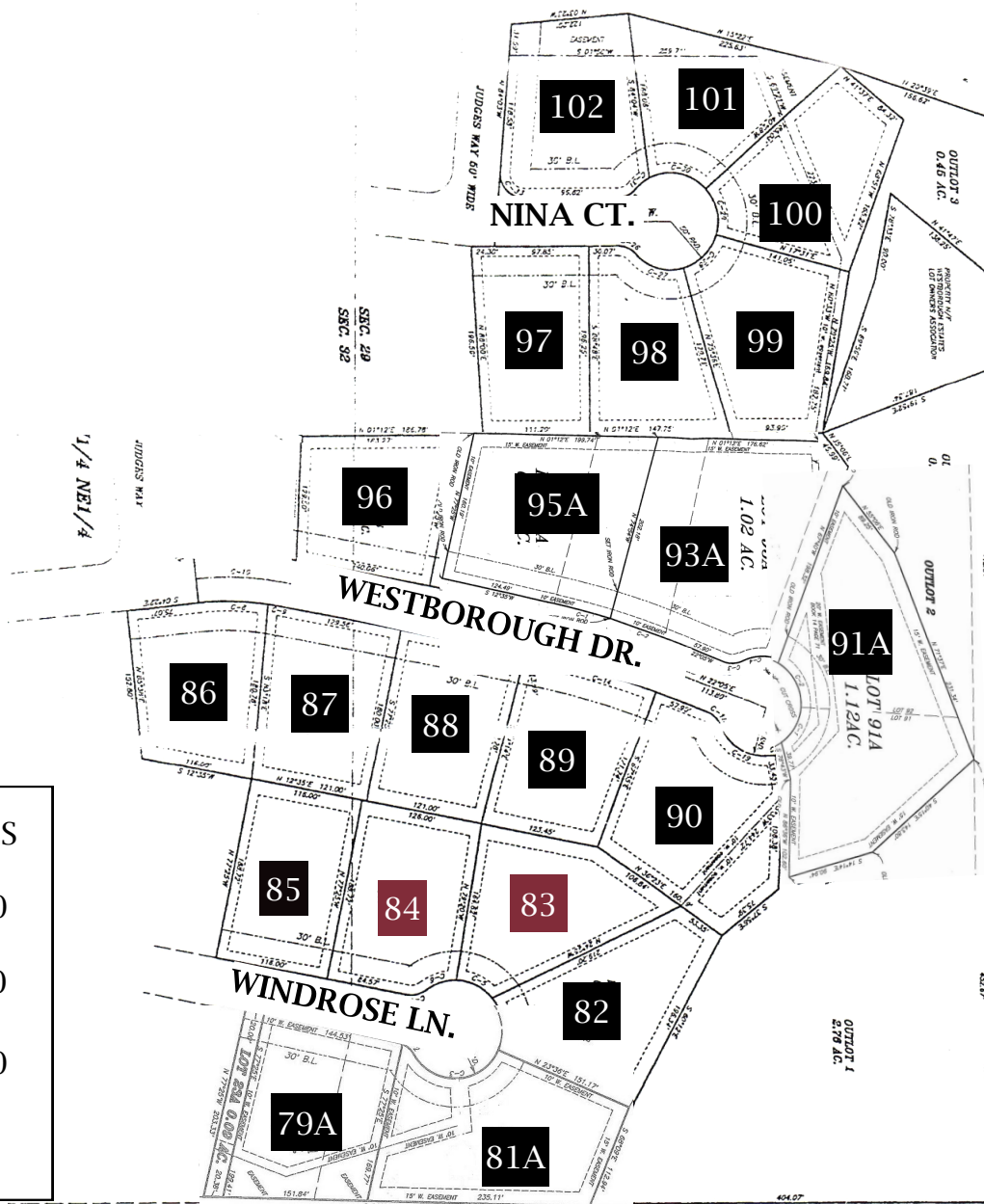


For more info, contact:  
Brandi Wommack: 636.697.7881  
brandi@arne-homes.com



A COMMUNITY FOR YOU

# Plat IV



LOT PRICES	
	\$42,000
	\$49,000
	\$59,000
	SOLD



**ARNE HOMES**  
CUSTOM CRAFTED HOMES



For more info, contact:  
Brandi Wommack: 638.697.7881  
brandi@arne-homes.com