

Envision & Plan



Project Goal & Vision

We are looking to provide an innovative solution to partner with third party vendors to help deliver and execute state-of-the-art projects on time and under budget.

The Global Engineering Services Startup D3PLoy Platform will be the main tool used by Startup PMs to drive project execution in partnership with 3PL, as well as the main source of information to drive and understand project completion (throughout the project lifecycle) in relation to module deployment.



Project Scope / Schedule

Discovery & Design

Weeks 1 – 3

11/30 – 12/17

Review & Phase 2 Prep

Week 4 – 6

1/3 – 1/21

- Kick-off
- User Requirements Elicitation
- Persona Requirements Elicitation
- Stakeholder interviews (8) *
- Technical Sessions*
- UX Wireframes *
- Task prioritization

- Implementation Roadmap definition
- High Level Product Backlog build out
- Mid-way project review
- Proof of Concept buildout*
- Auto-Pinning, searchable composite *
- AutoCAD Extraction *
- Python script creation *
- Architecture Diagram *
- Application Flow Diagram *
- Database Design Diagram *

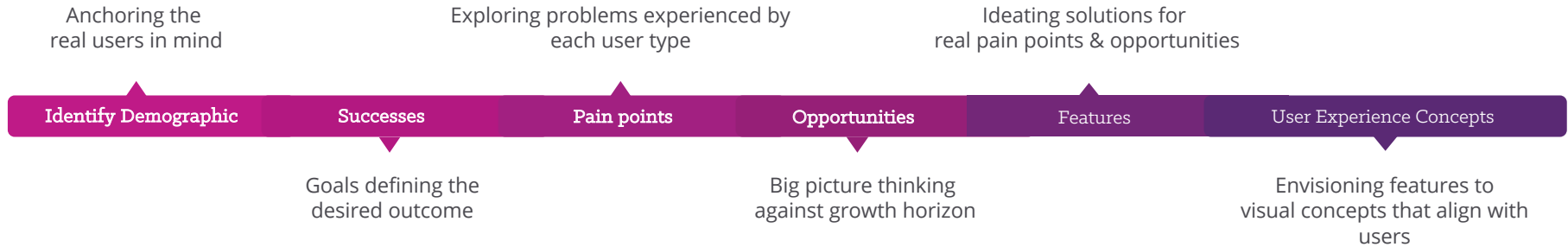
- UX Wireframes Cont. *
- UI Mockups
- Backlog Prioritization *
- Final Deliverable Meeting & Executive Summary
- Next Steps for implementation

* Deliverable

Current Experience Discovery

Key Areas Of Focus

Using Human-Centered Design For An Improved Experience



Discovery & Design

6 Weeks of Activities

- User Requirements Elicitation
- Persona Requirements Elicitation
- Stakeholder interviews (8)
- Technical Sessions
- UX Wireframes & Designs
- Task prioritization
- Roadmap definition
- High Level Product Backlog
- AutoCAD review sessions
- Python script creation
- Database technical sessions

Stakeholders

- Startup PM's
- Startup Senior Regional Manager
- Launch Managers
- 3PL Team

“
No way to track
users & process
”

Stakeholder Interviews

Overarching Observations From Research Sessions

“
We need better
visibility
”

“
Manual processes
lead to low ORT
scores
”

“
Find an easier
way to locate
modules
”

“
We need
consolidation of
our workstreams
& processes
”

“
Tired of data not
being centralized &
synchronized
”

“
No easy way to
communicate
”

“
No consistency &
everything takes
forever to get my
job done
”

Key Pain Points for Today

Manual Process

- All processes for project managers, laborers, or ORT testers
- All data tracking and reporting
- Locating modules and performing quality checks

Data Inconsistency

- Inability for data synchronizing between systems
- No centralized data source of truth
- Lack of clear and transparent communication between teams leads to inconsistent data
- Punchlist data not available in the application

Technical Limitations

- Performance
- Multiple legacy tools aren't reliable
- No current way to track milestone data
- Slow performing database
- No code application limiting the searching of the module on the composite
- Current technology does not allow automated way to having module location on the composite.

Key Themes for Product Success

Simplicity

Make receiving work, finding modules and checking work easier for all parties involved.

- Reduce the number of tools and systems
- Allow for mobile
- Clarity of work to be done or checked
- Personalize to remove clutter

Consistency

Create one place and process that can optimize efficiency and speed to complete work.

- Have the same priorities across the team
- Reduce learning curve for tools
- Prevent making up new processes

Transparency

Provide task clarity, project status and proactive communication across teams working on a jobsite.

- Get an overall view of project health at any time
- Share with parties as needed
- Export data

Data-enablement

Enable trackability, intelligence, management and automation of progress and performance to make faster decisions and eliminate mistakes.

- Ability for future automation
- Better reporting
- Administer data and manage assignments

Understanding Users + Workflows

User Discovery

Participants

- Startup PM's
- Startup Senior Regional Manager
- Launch Managers
- 3PL Team

Activities

- In-Person Moderated Group
- Remote Moderated Group
- MURAL Collaboration
- Individual Remote Interviews

Thank you!

Including the users in the process is vital for deeper understanding, creating a better end product and improving change management.

Continued Support

We will want to work with users to validate decisions and adjust as needed throughout the development process.

Five Key Product Personas



Startup PM

We oversee multiple projects and in charge of handing over them over successfully.



3rd Party Labor PM

We are responsible for building for deployment.



3rd Party Laborer/Temp

We execute the work for building buildout.



3rd Party Regional Manager

We oversee multiple projects and the health of the builds.



Operational Ready Testing Tester

We are in charge of executing readiness testing for operations.

Who are personas for?

Anyone trying to build empathy for a user or customer segment.

What are personas?

A reliable and realistic representations of your key user/customer segments.

Why create personas?

To provide guidance to the Amazon team when making decisions for user & stakeholder needs.

Where are personas used?

During product or service planning/ideation phases as well as key-decision points during user/customer support.

“I want to be able to focus more on my teams & people, over the process & tasks.”



Persona

Project Paulina Startup Project Manager

I oversee handing over successful projects. On time, within the budget, and with a great ORT score.

My engagement with our tools...



My technical capabilities are...



My need for a performative tool is...



I'm Motivated By...

- Becoming proactive instead reactive
- Streamlining our tools
- Gaining transparency between teams
- Improve our user experience
- Visualizing our progressive and cumulative data
- Being able to do my job remotely
- Standardizing our process
- Having the ability to see ORT results and compare

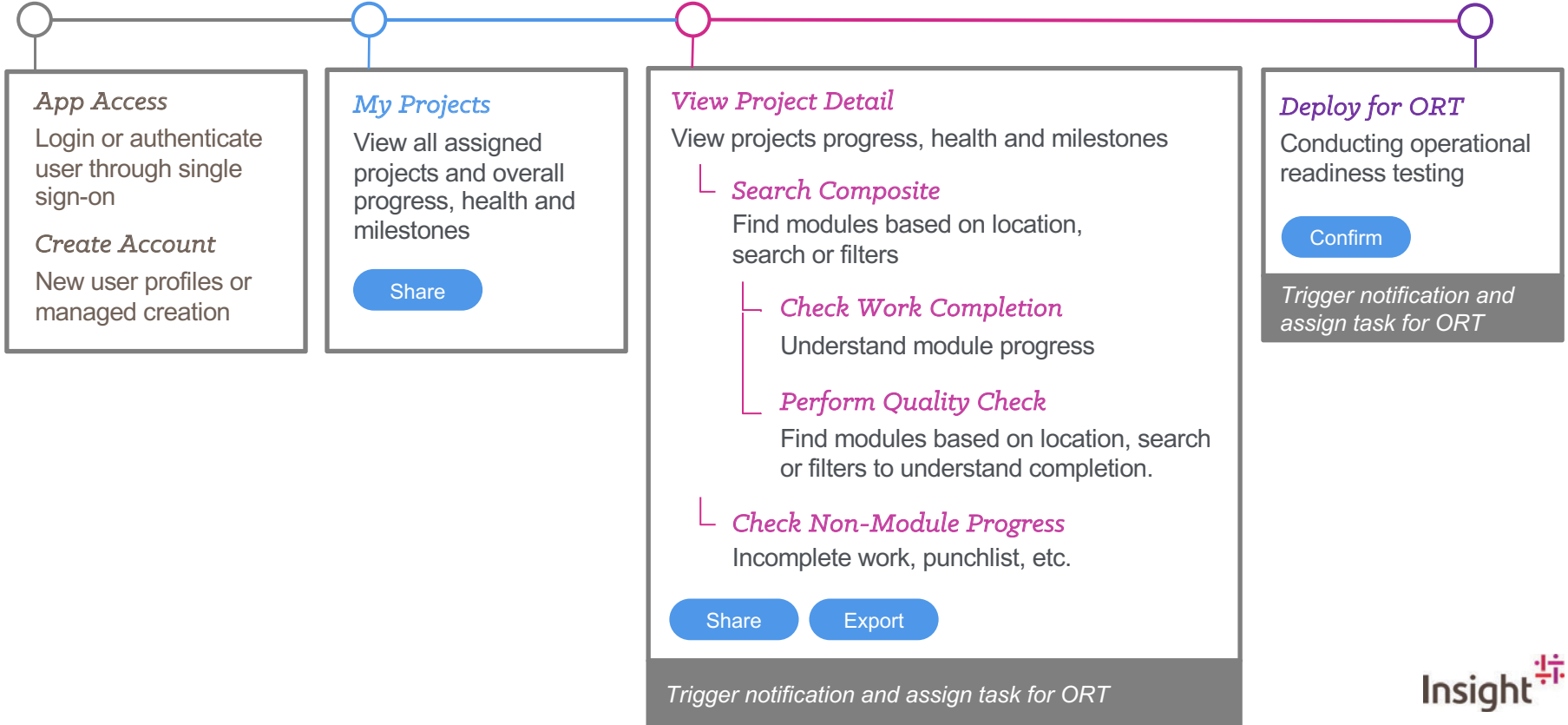
I'm Concerned About...

- Not being able to resolve and troubleshoot issues
- Low ORT scores
- Noncentralized data
- Constant change without visibility
- Changes in scope
- Performance of our tools
- Team not being able to complete their job

I'm Frustrated By...

- Our manual process
- All our tools
- Inability to communicate changes with teams
- Inconsistencies with the functionality & capabilities

Startup Project Manager



“I want to be able to see the overall health of my projects & teams.”



Persona

Successful Steven 3rd Party Regional Manager

I oversee multiple projects, the health of buildouts and teams. As well as the main escalation point person.

My engagement with our tools...



My technical capabilities are...



My need for a performative tool is...



I'm Motivated By...

- Ability to visualize the health of projects
- Being able to monitor my team's health and status
- Tracking module progress and take actions
- Ability to track milestones accurately
- Minimizing response time to issues
- Reducing fire drills within the application

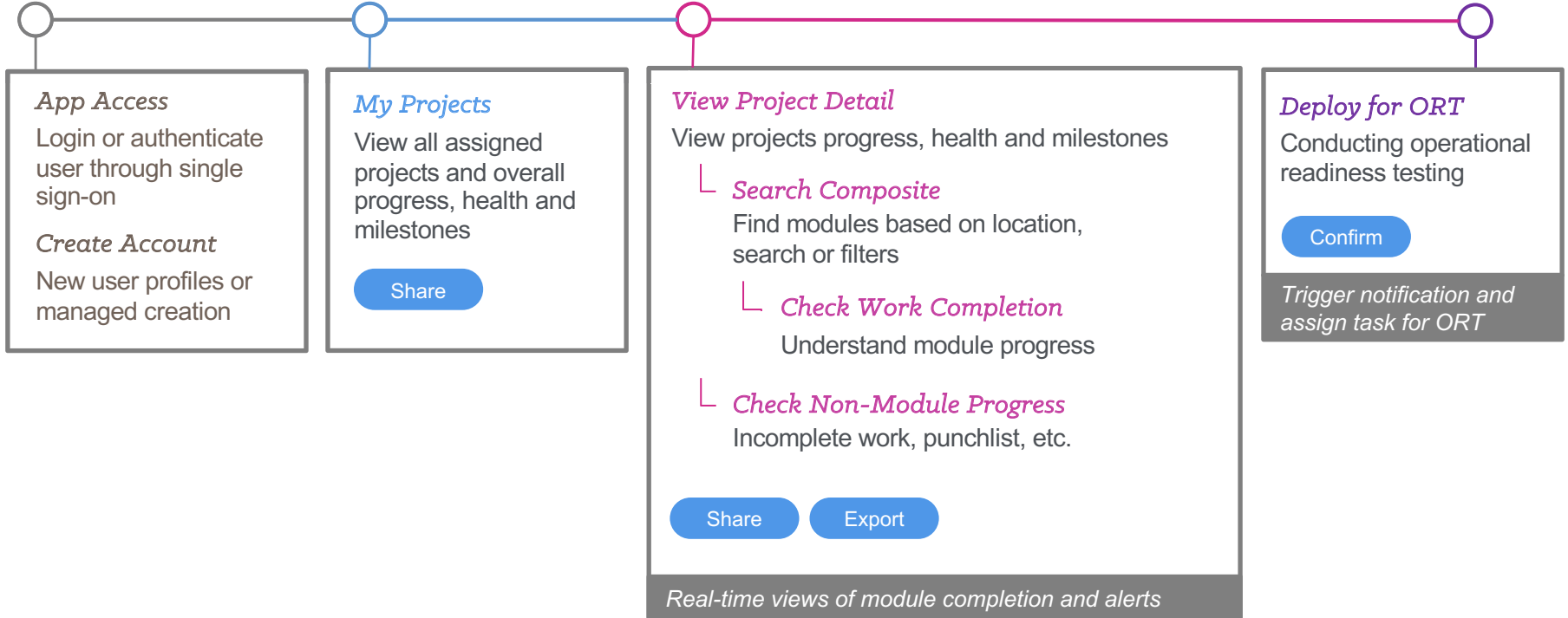
I'm Concerned About...

- Unexpected changes
- Manual escalation
- Changes in scope

I'm Frustrated By...

- Our manual process
- Inability to see my team's health
- Inability to communicate changes with teams
- Lack of detailed reporting

3rd Party Regional Manager



“I want to ensure we get a great ORT score and quality results.”



Persona

Homer Simpson
3rd Party Labor Project Manager

I responsible for building for the deployment and getting a great ORT score.

My engagement with our tools...



My technical capabilities are...



My need for a performative tool is...



I'm Motivated By...

- Becoming proactive instead reactive
- Being able to identify and flag risks
- A clear source of truth with our data
- The ability to search for clashes
- Having clear expectations
- Weekly reports and trending data

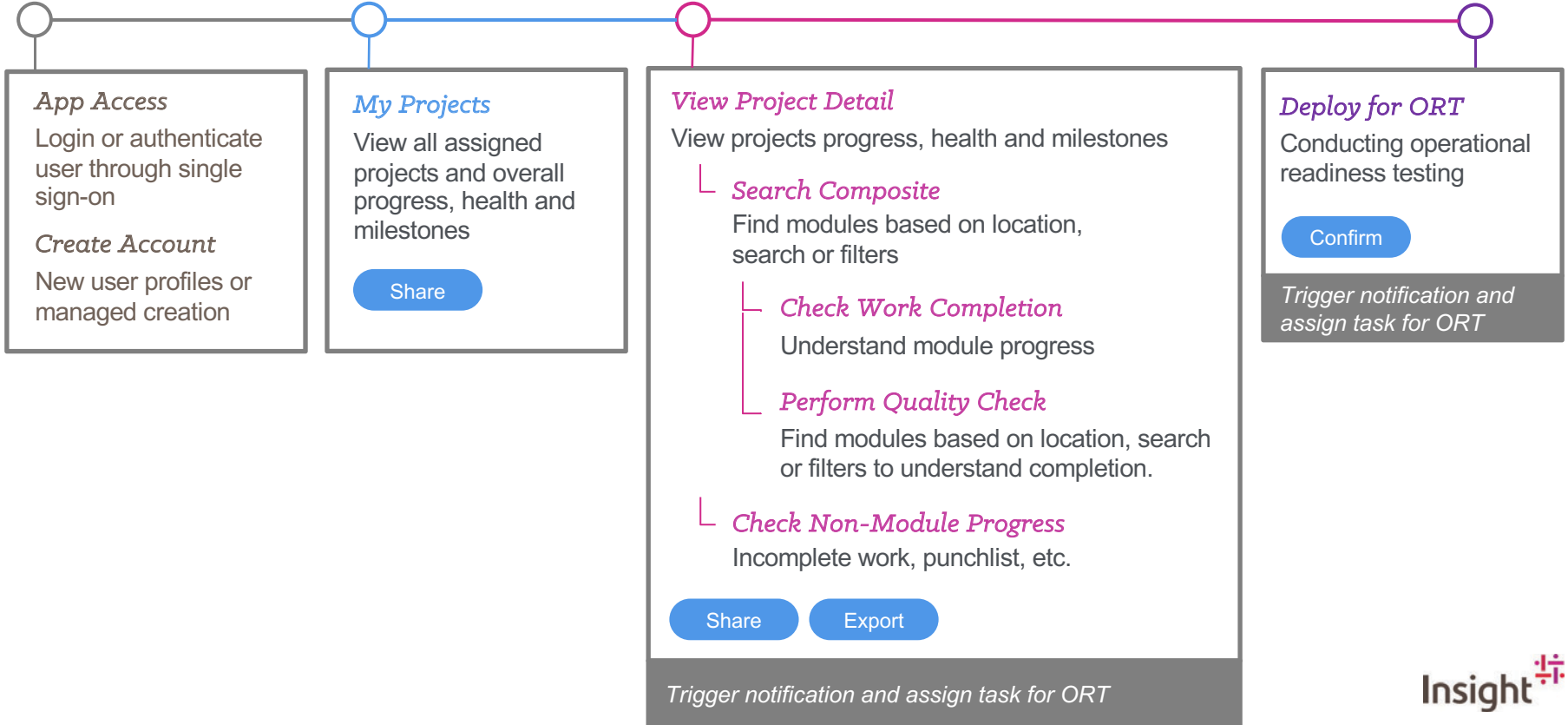
I'm Concerned About...

- Ability to define a clear source of truth
- Low ORT scores
- Constant change without visibility
- The ability to organize the work
- Performance of our tools
- Clashes on scale and design

I'm Frustrated By...

- Our manual process
- Atlas
- Inability to communicate changes
- Clashes on scale and design
- The finger pointing and blaming
- Too much paperwork

3rd Party Project Manager



“I want to be able streamline my process, by having a clear definition my process.”



Persona

Execution Ed 3rd Party Laborer / Temp

I am responsible for executing the work of a build and a great ORT score.

My engagement with our tools...



My technical capabilities are...



My need for a performative tool is...



I'm Motivated By...

- Clear expectations and definition of my process
- Streamlining my process
- Whiteboarding tasks
- The ability to automate task assignments
- Improve our user experience

I'm Concerned About...

- On the fly changes and reworks
- Little problems adding up to major issues
- Having what I need to complete my work

I'm Frustrated By...

- Messy environment
- Lengthy measuring process
- Not being organized

3rd Party Laborer / Temp

App Access

Login or authenticate user through single sign-on

Create Account

New user profiles or managed creation

View Project Detail

View projects progress, health and milestones

My Assignments

View work that I need to accomplish

Search Composite

Find modules based on location, search or filters

Check Own Work (manual)

Ensure assigned work needed and module is complete

Mark Work Complete

Update module progress/status

Request Assistance/Question

Send alert to PM for help

Share

Export

Map Route

Trigger notifications for requests

Submit for Quality Check

Conducting operational readiness testing

Confirm

Trigger notification to PM

“I want to have consistency and synchronization of all data.”



Persona

Diana Prince **Operational Readiness Tester**

I oversee readiness testing for operations and very motivated by a great ORT score.

My engagement with our tools...



My technical capabilities are...



My need for a performative tool is...



I'm Motivated By...

- The accuracy and quality of my tests
- Improving my ability to locate modules
- The ability to sync data between ORT and D3PLoy
- Speeding up my testing process
- Having the ability to link up station ID's
- Clear expectations

I'm Concerned About...

- Low ORT scores
- Having no consistency
- Not sure about what I need to do

I'm Frustrated By...

- Testing the wrong location
- Not being able to find module location
- The slow manual process

Operational Readiness Tester

App Access

Login or authenticate user through single sign-on

Create Account

New user profiles or managed creation

View Project Detail

View projects progress, health and milestones

My Assignments

View work that I need to test

Search READ ONLY Composite

Find modules based on location, search or filters

Inspect Work (manual)

Ensure assigned work needed and module is complete

Mark Work Complete

Update module progress/status

Request Assistance/Question

Send alert to PM for help

Share

Export

Map Route

Trigger notifications for requests

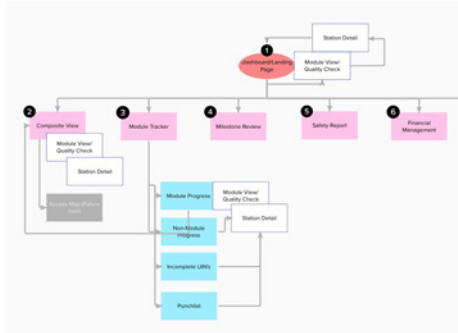
Submit ORT Completion

Operational readiness testing is complete, and the site is good!

Confirm

Trigger notification to PM

The Process



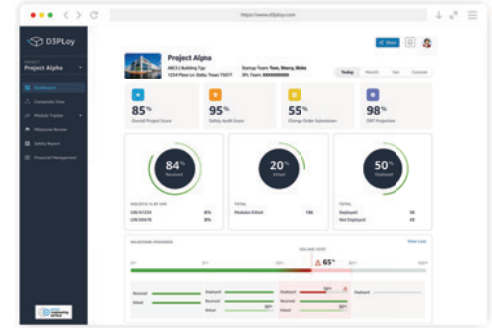
Sitemap

Visualize the website's structure to optimize navigation, map the user experience, and determine page hierarchies.



Wireframes

Creating the structure and hierarchy of content within the interface of the experience and responsive interaction of elements.

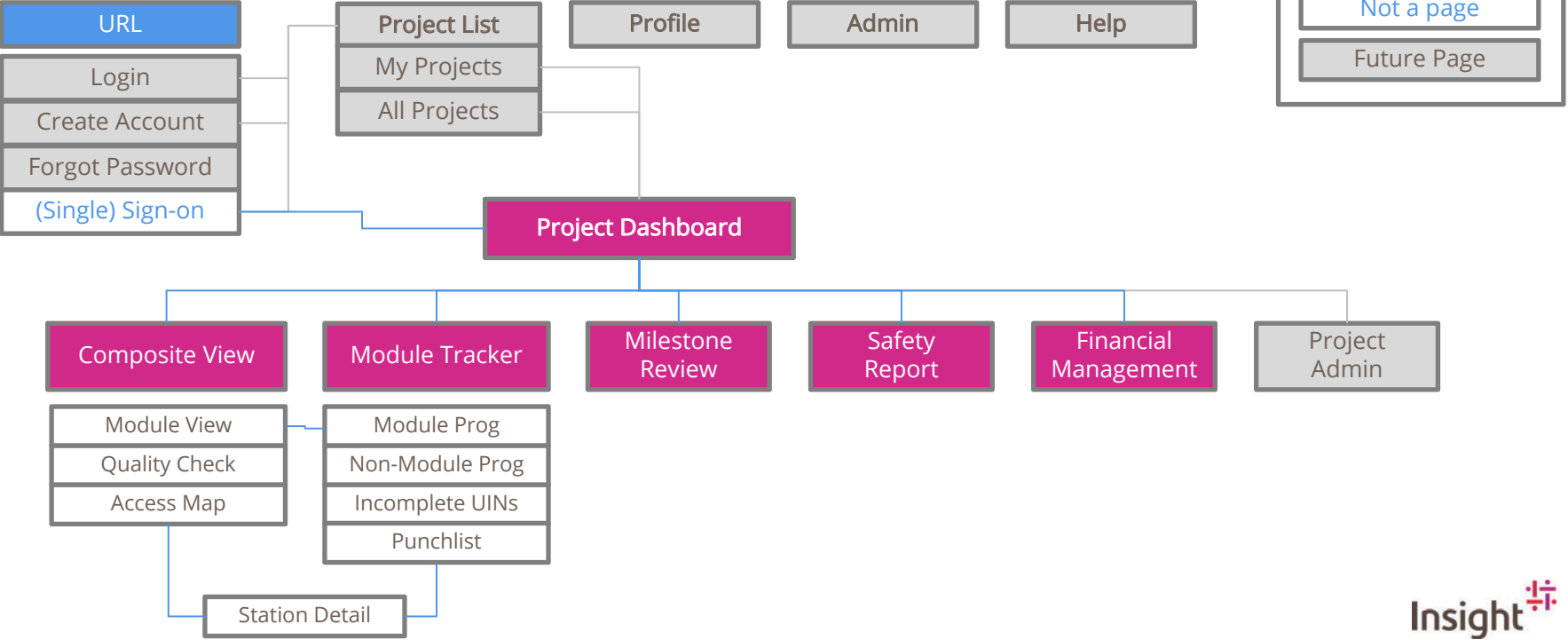


Designs

Application of visual styling that brings the interface to life in its final form for development.

Sitemap

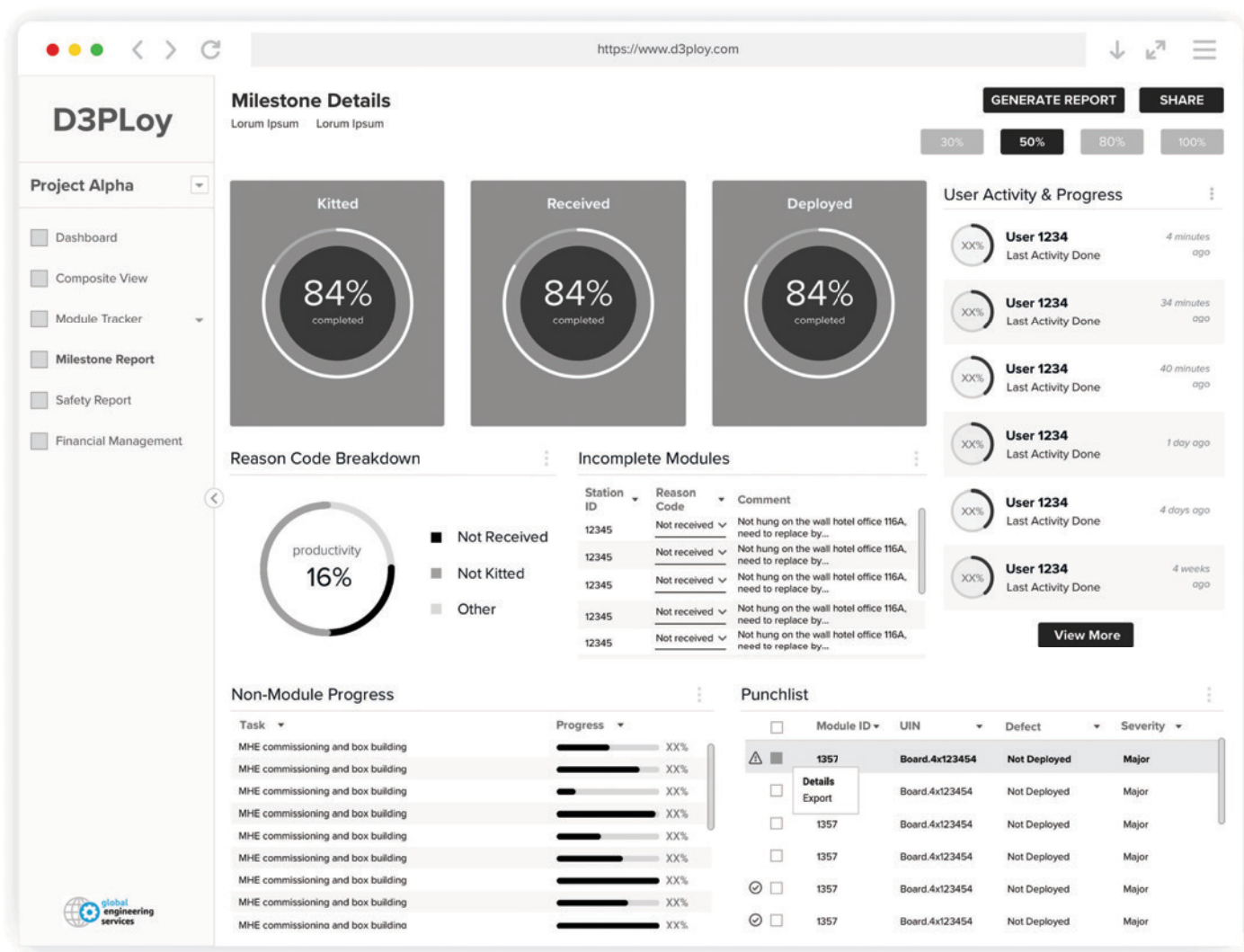
Structure of the App



Wireframes

Milestone Report

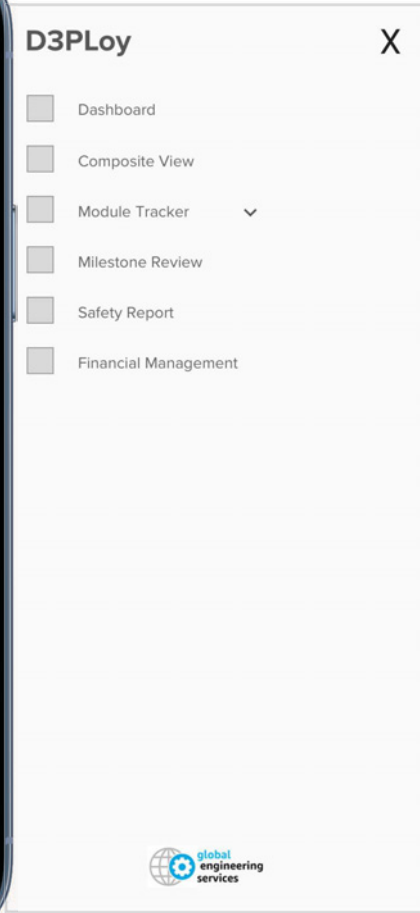
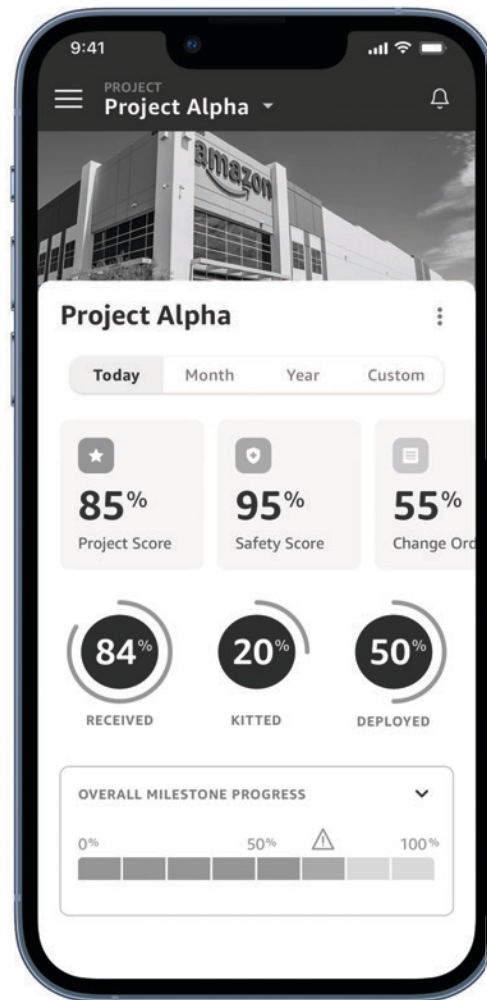
- Modular Design
- Ability To Generate Reports
- Quick Switch Function For Each Milestone
- Most Important Information Visualized & Ability To Act
- Ability To See User Activity & Progress
- See Multiple Data Points For Progress



Wireframes

Mobile Views

- Device Agnostic
- Modular Design
- On The Go Capabilities
- Notifications
- Messaging



Style Guide

01 Color Palette



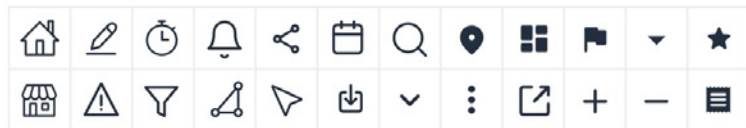
Primary "Squid Ink" Blue
HEX 232F3E
RGB 35 | 47 | 62

Prime Blue
HEX 00A8E1
RGB 0 | 168 | 225

White
HEX FFFFFF
RGB 255 | 255 | 255



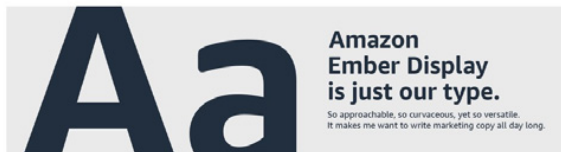
02 Iconography



03 Type and Type Scale

Amazon Ember Display

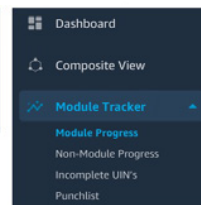
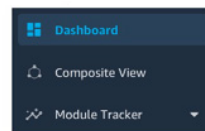
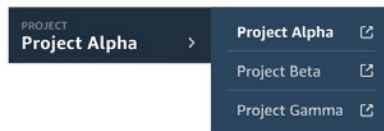
ABCDEFGHIJKLMNOPQRSTUVWXYZ
abcdefghijklmnopqrstuvwxyz
01234567890



04 Buttons



05 Navigational Elements



H1 Heading

H1 | Amazon Ember Display 40pt Bold

H2 Heading

H2 (page header) | Amazon Ember Display 18pt Semibold

H3 Heading

H3 (subheads) | Amazon Ember Display 20pt Medium

H4 Heading

H4 | Amazon Ember Display 16pt Medium

H5 Heading

H5 (Menu item, tabs) | Amazon Ember Display 14pt Bold

H6 HEADING

H6 (small titles) | Amazon Ember Display 12pt Bold 64% Transparency

Body 1

Body 1 | Amazon Ember Display 14pt Regular

Body 2

Body 2 (subcontent) | Amazon Ember Display 14pt Regular 80% Transparency

Body 3

Body 3 (small print, small links) | Amazon Ember Display 12pt Regular

UI Design Dashboard

My Projects

Easily change between assigned projects you work on

Project Details

Access for everyone to high-level project information

Visible Alerts

Quickly take action based on project health data

Open Shareability

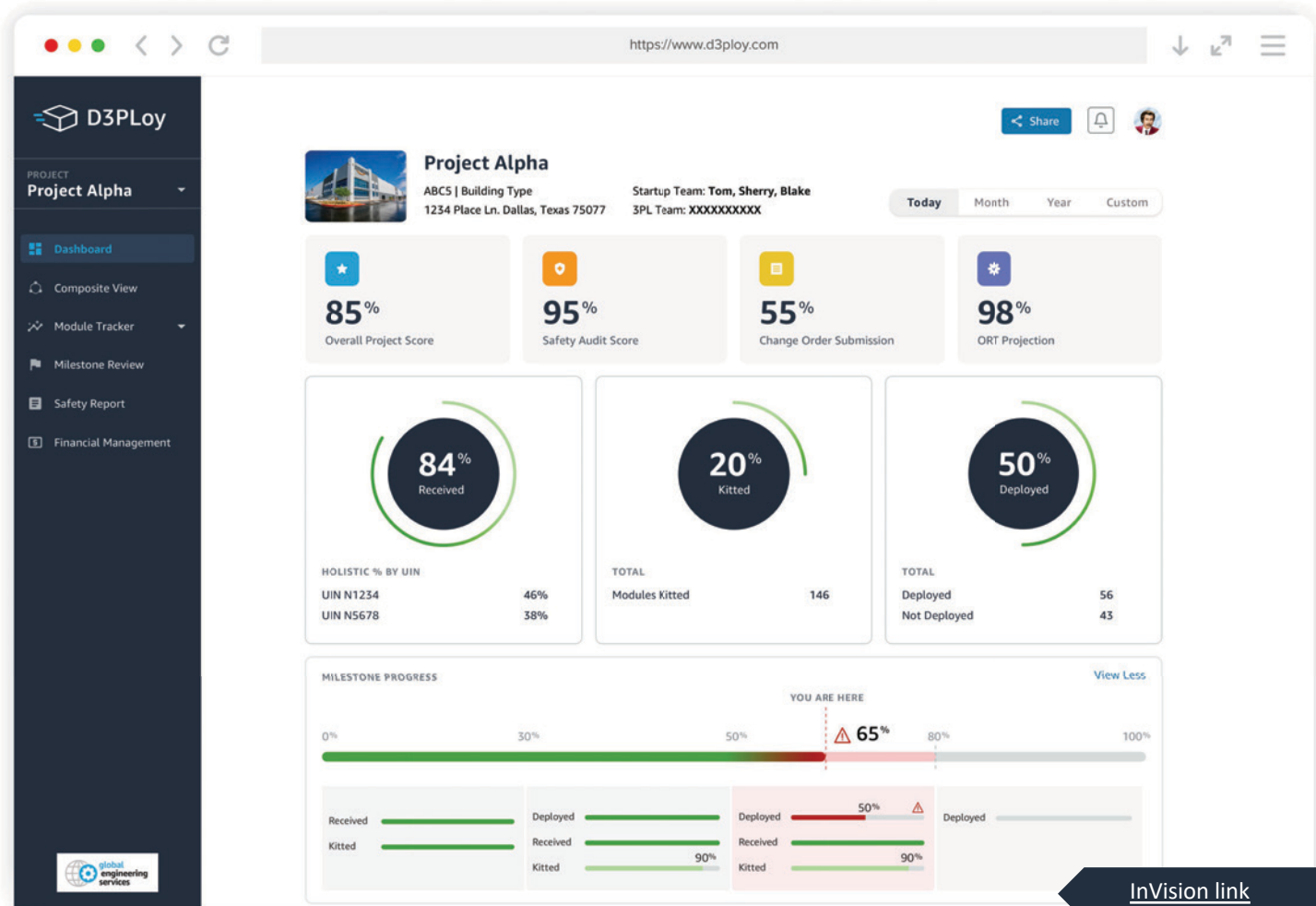
Simplified sharing of the project with other parties

Data-Driven Views

Have transparency into the overall work that's been completed

Milestone Progress

Understand where you are with the project timeline



UI Design

Composite View

Collapse/Expand

Easily collapse and expand panels

Search

Search, filter and sort

Module Details

Drill in to see module details on a composite pin

Multi-Select

Select multiple modules at one time from the list or composite itself

User Specific

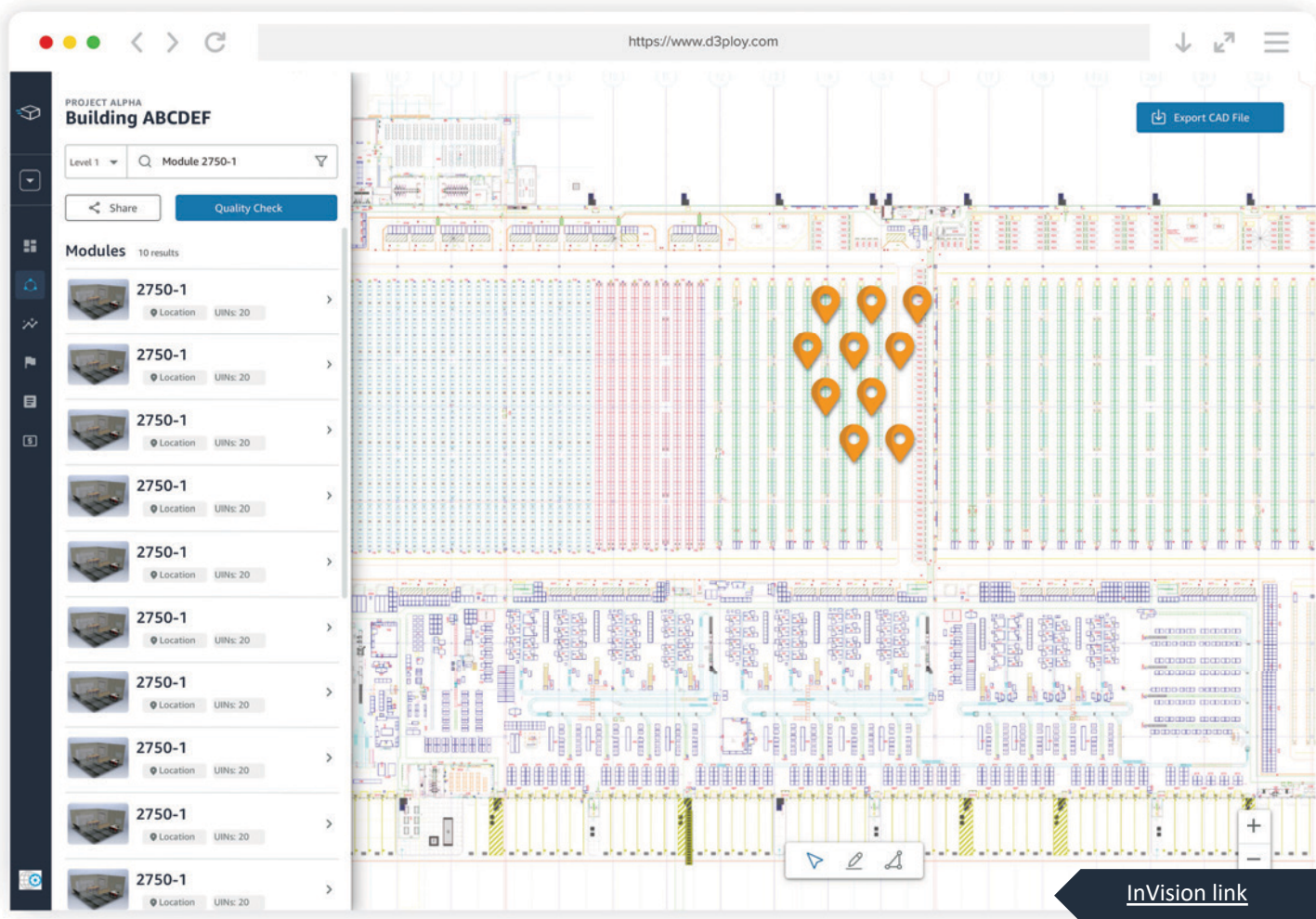
Each screen tailored to the user

Open Shareability

Simplified sharing of the project with other parties

Quality Check

In line function for quality check



UI Design

Quality Check

Search

Search and filter by level

Confirm or Reset Action

Validation to confirm or reset user action

Multi-Select

Select multiple modules at one time from the list or composite itself

Group by UIN

Ability to group in search

Back

Quality Check

Level 1 UIN

<input type="checkbox"/>	MODULE ↓	UIN ↓	DESCRIPTION ↓
<input type="checkbox"/>	1257	Identifier	XXX
<input checked="" type="checkbox"/>	1257	Identifier	XXX
<input checked="" type="checkbox"/>	1257	Identifier	XXX
<input type="checkbox"/>	1257	Identifier	XXX
<input type="checkbox"/>	1257	Identifier	XXX
<input type="checkbox"/>	1257	Identifier	XXX
<input type="checkbox"/>	1257	Identifier	XXX
<input checked="" type="checkbox"/>	1257	Identifier	XXX
<input checked="" type="checkbox"/>	1257	Identifier	XXX
<input checked="" type="checkbox"/>	1257	Identifier	XXX
<input checked="" type="checkbox"/>	1257	Identifier	XXX
<input type="checkbox"/>	1257	Identifier	XXX
<input type="checkbox"/>	1257	Identifier	XXX
<input type="checkbox"/>	1257	Identifier	XXX
<input checked="" type="checkbox"/>	1257	Identifier	XXX
<input checked="" type="checkbox"/>	1257	Identifier	XXX
<input checked="" type="checkbox"/>	1257	Identifier	XXX
<input checked="" type="checkbox"/>	1257	Identifier	XXX
<input type="checkbox"/>	1257	Identifier	XXX

Reset Confirm

Export CAD File

InVision link

The Path Forward

Emerging Themes

Envisioning A Successful Solution



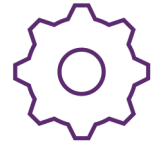
Interactive Composite
Abilities



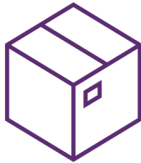
Centralized &
Synchronized Data



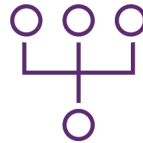
Visibility
For Personalization



Process
Automation



Improved
Quality Checks,
Tracking, & Reports



Improved
Administration



Modernized
Environment

Next Steps

Backlog Review

Epic	Feature	Epic Description
Composite View	<ul style="list-style-type: none"> Visible and Interactive Site Composites Searchable Composites 	<p>Site composites must be visible and interactive. Users must be able to search for module, select levels, and filter by different metrics.</p> <p>Searched/filtered modules should appear on the composite and be clickable to go to the Module View. Start Up Project Managers and 3PL Project Managers can share composite view with searched/filtered modules (preferably a private sharable link that anyone with the link can view)</p>
Quality Check	<ul style="list-style-type: none"> Bulk Quality Check Searchability within Quality Checks Track and validate changes 	<p>Add easily accessible details and efficiency to quality checks. Develop the capability to QC multiple modules at one time, filter and search data, receive notifications for any changes.</p>
All Projects/Regional Landing Page	<ul style="list-style-type: none"> Project List 	<p>Displays a list of all projects and allows Regional PMs to filter by site types and business units - this view will provide an understanding the overall health of all projects</p> <p>The All Projects landing page that allows regional PMs to filter by building type as well as business unit. They would then select a project, which would have the navigation and screens captured in the wireframes.</p>
Individual Project Dashboard	<ul style="list-style-type: none"> Weekly Progress Milestone Review Cumulative Progress Tracking Customizable Views 	<p>Visual display of project information and metrics highlighting the important milestones of an individual project's lifecycle. The dashboard readily accesses the composite view, tracks module progress, as well display</p> <p>3PL/SU PM can see % Received, % Kitted, % Deployed for module in 30, 50, 80, 100 milestone, and for overall project.</p>
Milestone Review	<ul style="list-style-type: none"> 30/50/80 Milestone Review 	<p>Displays a snapshot of Module Progress and Non-Module Progress of the milestone.</p>
Financial Management	<ul style="list-style-type: none"> Change Order Log 	<p>Submit documents from the 3PL to the Amazon SU PM for approval or for information. Change orders will need a template so that we can pull data, and descriptions to reduce change orders in the future. Burnsheets (Excel) can be submitted and approved for one off jobs.</p>

Backlog Review

Epic	Feature	Epic Description
Module Tracker	<ul style="list-style-type: none"> • Module Progress • Non-Module Progress • Incomplete UJINs • Punchlist 	<p>Amazon Start Up Project Managers have visibility of 3PL progress and can quickly assess and provide opportunities for their improvement. It shows 3PL PM what modules should be prioritized to work on for the day.</p>
Safety Audit	<ul style="list-style-type: none"> • Safety Audit Report • Project level safety metrics display 	<p>A project site's safety audit and weekly safety report that scores a site's safety according to a predetermined set of standards pertaining to emergency egresses, personal protective equipment, etc.</p> <p>Every week, SU PM needs to submit a Safety Audit Report. The dashboard shows Safety Audit Reports for each week of the project. When submitting a new report, a new form with required fields will pop up for SU PM to fill out.</p> <p>Weekly audit report submission – this tool exists in an excel form, integrating this into the 3PL platform will reduce workload for the SU PM. SU PMs complete this task weekly and the 3PL usually fills it out and submits it for us.</p>
User Permissions	<ul style="list-style-type: none"> • Admin Functionality • Persona Permissions 	<p>Authorization given to users to enable them to access specific resources,, views, and information on the application based on their credentials and expected application behaviors.</p>
Variance Tracking	<ul style="list-style-type: none"> • Independent Variance Utility • Variance Functionality 	<p>Compare variances in composite to different data sources</p> <p>MVP: compare module tracker modules to composite module list by item, give a column of deltas</p> <p>Process: automatically run at rev 1.0 and then manually re-run until it runs automatically at 2.0, compare MBOA to composite scan, need cleanup on MBOA process if we use it as a source of truth. when 2.0 is ready, fire trigger saying it's ready. run script to compare module list with composite. generate variance list: have warning if it doesn't meet 80% threshold.</p>

Next Steps

- Finalize Phase II scope, investment and staffing
- SOW creation and signature
- Initiate Phase II

Questions?

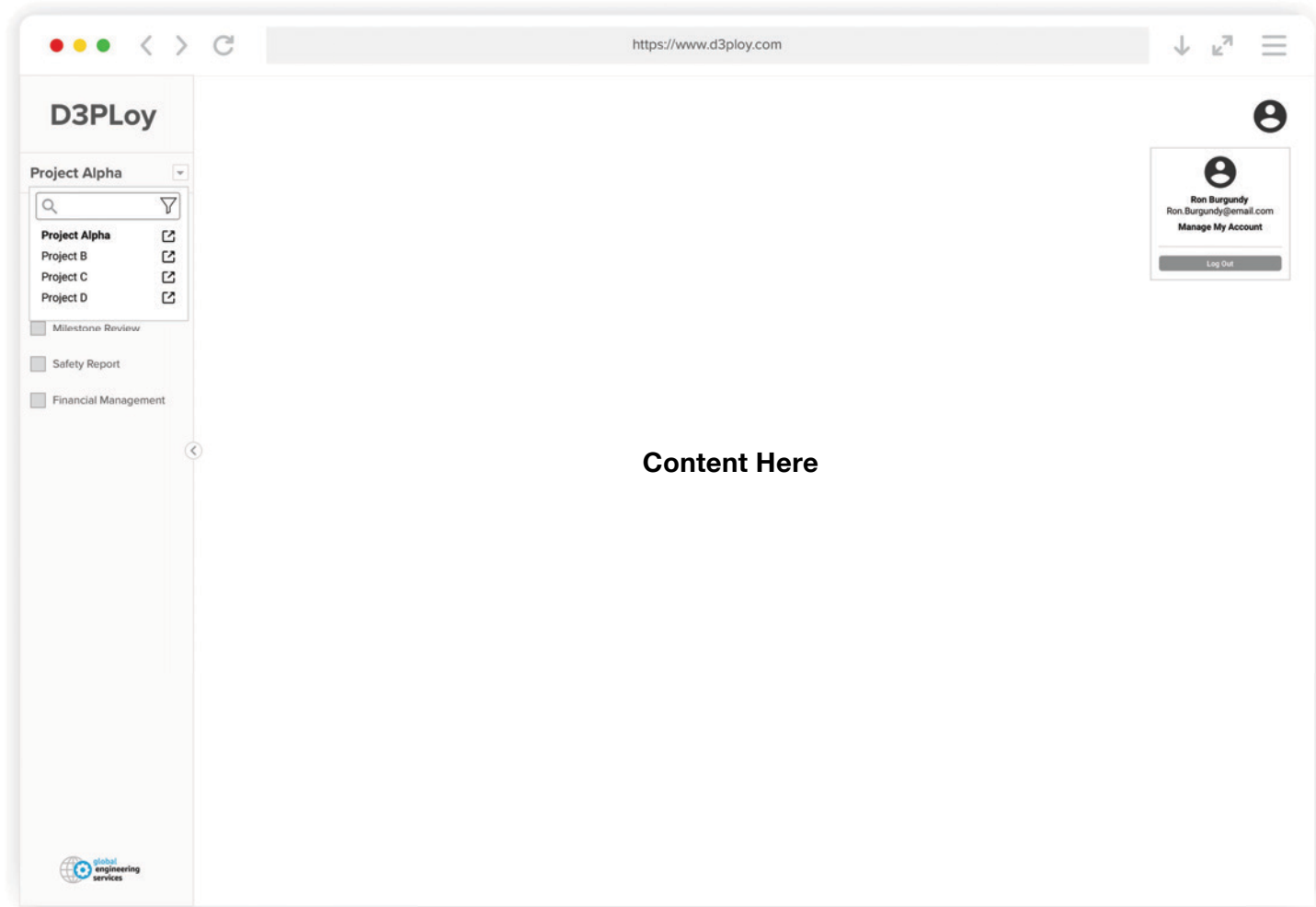


 **Insight** | Digital
Innovation

Wireframes

Navigation

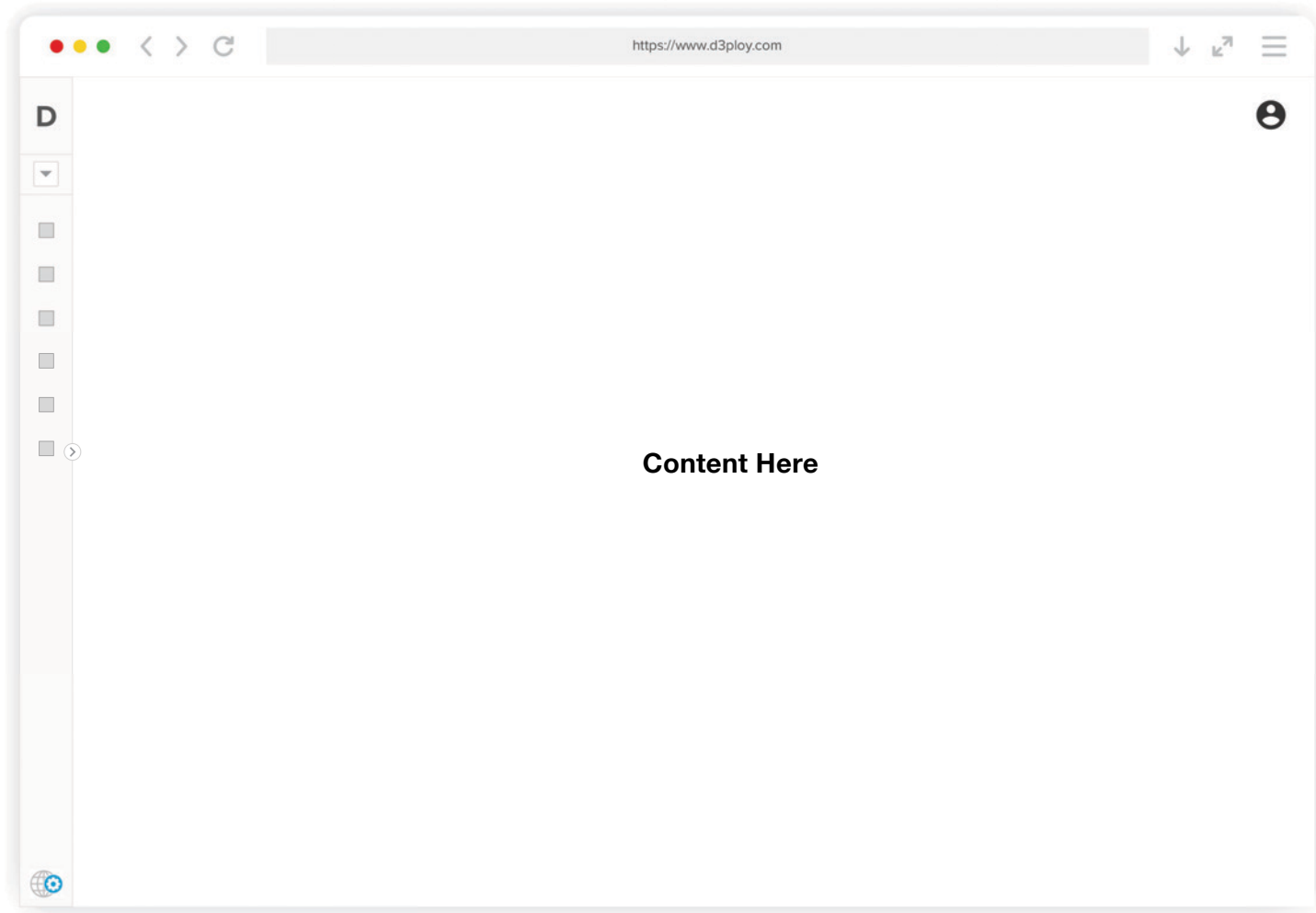
- Left Orientation Enhancing Visual Real Estate
- Standard User Process Hierarchy
- Clear Ability for Multiple or Single Project Selection & Search/Filtering
- Iconography for Quick Visual Reference
- Baseline Accessibility
- **Future:**
 - My Account
 - Administration/Permissions
 - Help



Wireframes

Navigation

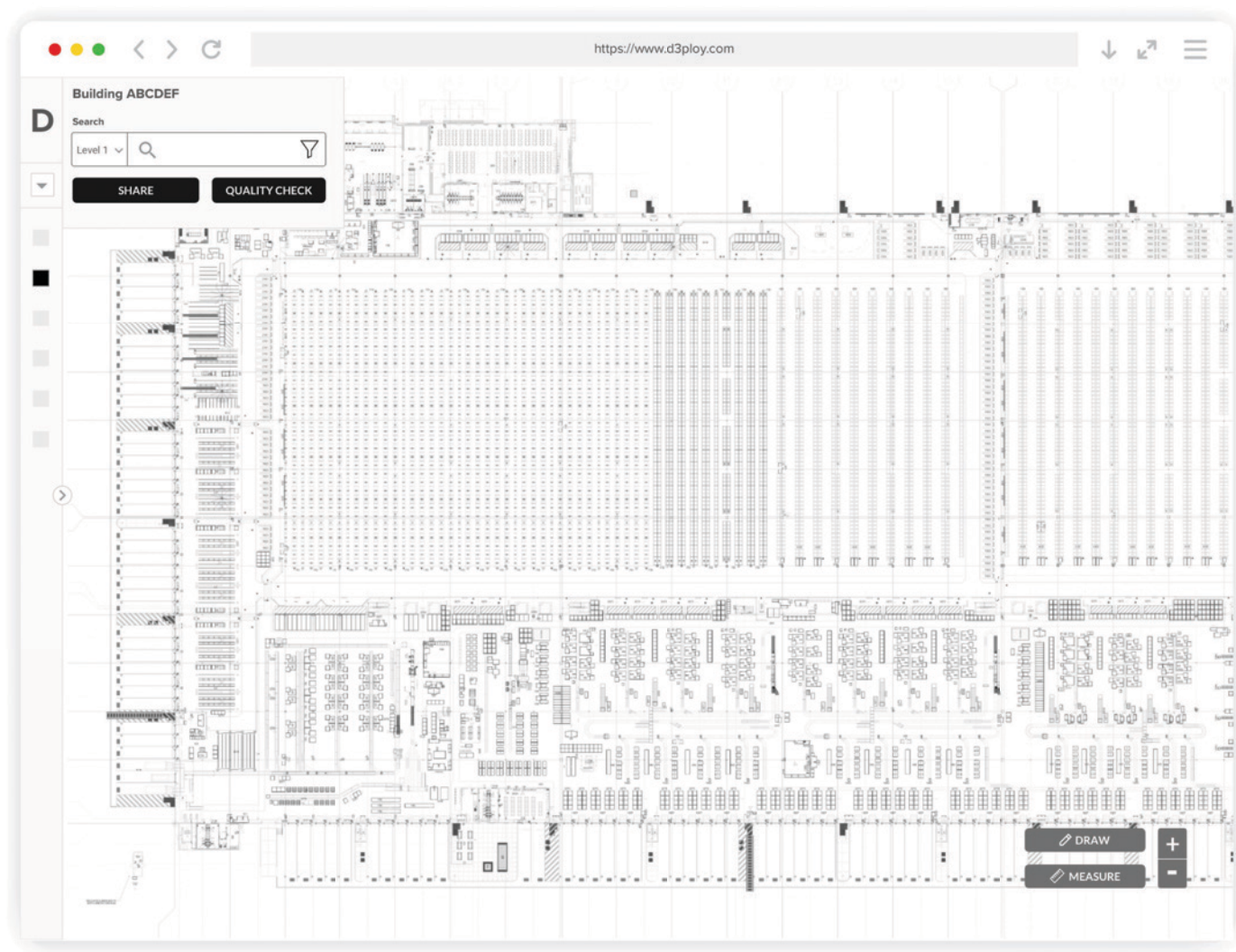
- Collapsible & Expandable to Maximize Visual Real Estate
- Device Agnostic



Wireframes

Composite View

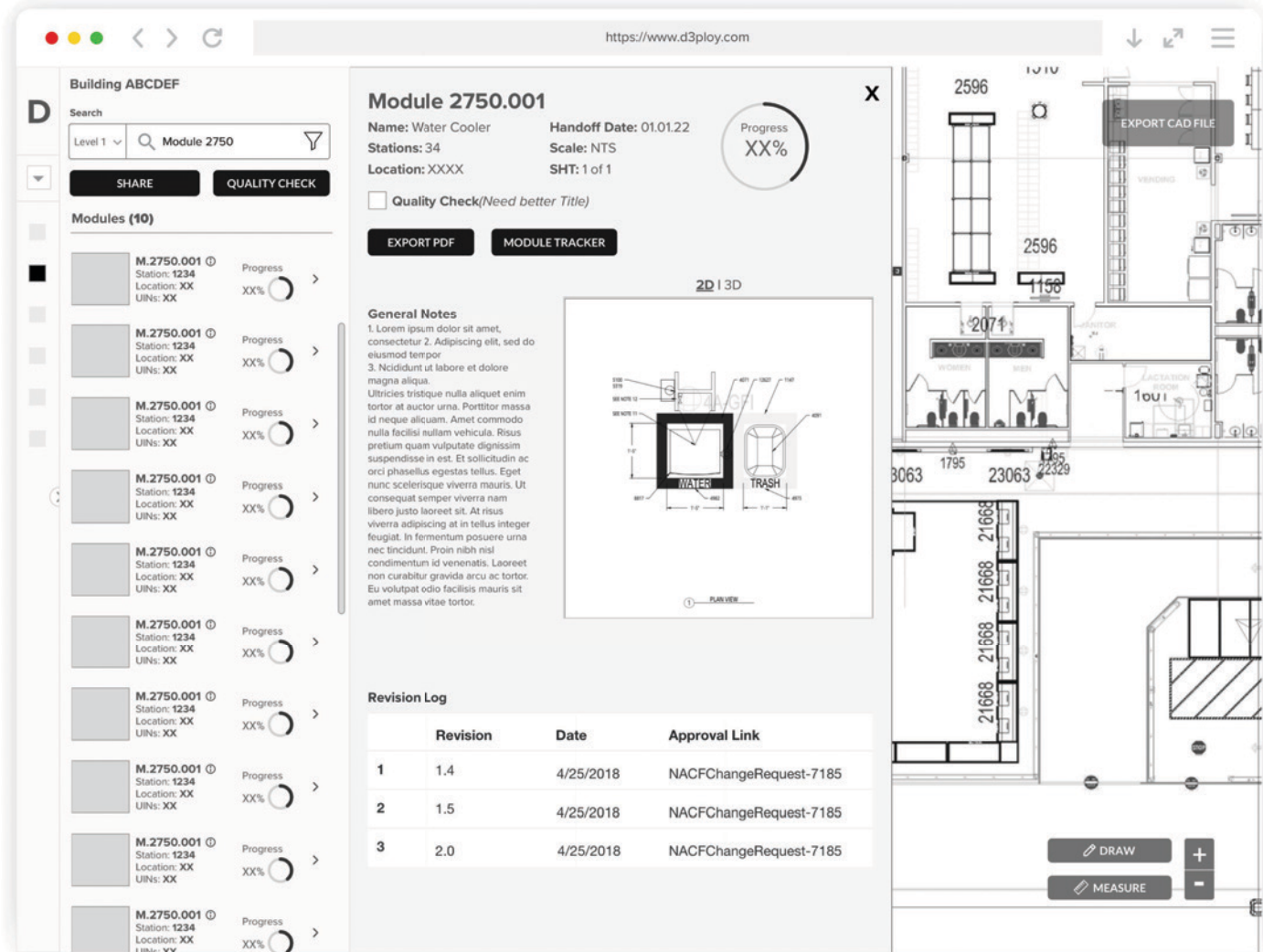
- Collapsible & Expandable
- Searchable, Filterable, & Sortable Composition
- User Specific
- Draw to Select Multiple Modules or Specific Area on Composite
- Ability to See Module Detail on Composite Pin
- Simplified User Experience & View
- Share & Quality Check Abilities Inline



Wireframes

Composite View Module Detail

- Module Detail Panel in Same Composite View
- Improved Data Structure
- Ability to View Module Location Detail & on Composite
- Ability to Seamlessly Switch Between Modules
- Inline Function for Quality Check
- Link to Module Tracker
- 2D & 3D Views



Wireframes

Quality Check

- Inline Quality Check on Composite
- Ability for Single or Bulk Action
- Searchable by Single Level or All
- Ability to Filter & Group By in Search
- Validation to Confirm Action or Reset User Action
- Simple UX & Process

The screenshot shows a web application interface for a wireframe quality check. The browser address bar displays <https://www.d3pjoy.com>. The page title is "Quality Check".

The interface features a search bar with a dropdown menu set to "Level 1" and a search input containing "1257". To the right of the search bar is a "Group By" dropdown menu set to "UIN".

Below the search bar is a table with the following columns: "Module", "UIN", and "Description". The table contains 20 rows of data, each with a checkbox in the "Module" column. The "UIN" column contains "XXXX" and the "Description" column contains "Lorem ipsum XXX".

The table is followed by a large wireframe diagram. The diagram shows a grid of elements, including a central area with three columns of black circles. At the bottom right of the diagram, there is a "MEASURE" button with a plus sign icon.

At the bottom of the interface, there are two buttons: "CONFIRM" and "RESET".

Wireframes

Dashboard

- Project Level View & (future) Multi-project View
- Overall Health & Project Status
- Ability to Gather Trending Project Data
- Overall Milestone Progress View with Actionable Items
- Ability to Share Dashboard by Default & Custom Data Sets
- Ability for Notifications & Validation of Project Status

