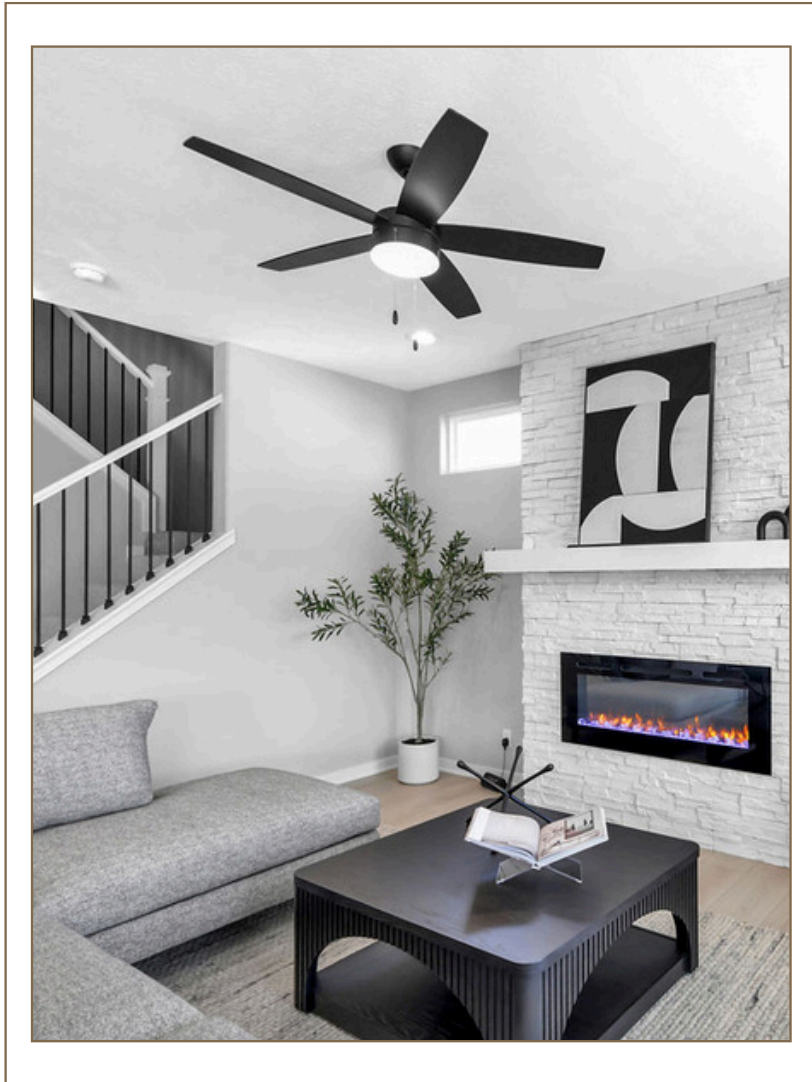


RICHLAND HOMES



Lets build
your dream home
together.

Better
Homes
and Gardens.
REAL ESTATE

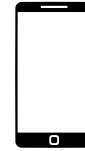
THE
GOOD LIFE
GROUP



Meet Your Richland Homes Sales Agents



**Heather
Chaney**



402.216.5705

heather.chaney@betteromaha.com

REALTOR, HOMELIFE REALTY GROUP | BHGRE



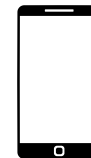
THE
GOOD LIFE
GROUP



REALTY GROUP



**Shannon
Bartling**



402.881.2572

shannon.bartling@betteromaha.com

REALTOR, HOMELIFE REALTY GROUP | BHGRE

MODELS:

Quartz-8613 N 177TH or Blue Sapphire-8609 N 176TH

BENNINGTON, 177th and State

COMMUNITIES



School District: Bennington
Location: 177th Street & State

Just south of Chestnut Hills, you'll find over 730 acres of outdoor fun, including the 220-acre Lake Flanagan. This prime location offers easy access to 5+ miles of hiking and biking trails, parks, and green spaces, with shopping and dining nearby. Chestnut Hills features a charming community of 200+ lots, many with scenic views of tree-lined rolling hills—making it a place you'll love coming home to!



School District: Bennington
Location: North 168th Street and Bennington Road

Newport Vista is just two minutes away from Bennington Elementary, Middle, and High School—some of the top-ranked schools in Nebraska!

KEMPTEN CREEK



School District: Bennington
Location: 156th & Bennington Rd

Adjacent to the proposed NRD lake area
 Close to High School, Middle School, downtown Bennington, Bennington Fire Dept, Quick access to Splash Park, walking trail, Bennington Baseball complex, Flanagan Lake, and 50-acre Park

Westbury Creek



School District: Elkhorn
Location: 204th & F

Westbury Creek offers easy access to vibrant West Center Street and the Dodge Expressway, putting Omaha destinations within 20 minutes. Part of the esteemed Elkhorn School District, it's close to Blue Sage Elementary, Valley View Jr. High, and Elkhorn South High School. Nearby, West Omaha provides plenty of shopping, dining, and entertainment options.

COMMUNITIES



School District: Gretna
Location: 180th & Cornhusker

Welcome to Hills of Aspen Creek, a charming neighborhood in the Gretna School District, conveniently located at 180th Street just north of Cornhusker Road. Offering a peaceful setting and close proximity to top-rated schools, it's the perfect place to enjoy suburban tranquility and a strong sense of community.



School District: Papillion La Vista
Location: 114th & Lincoln

This thriving community features a 13-acre lake, 46 acres of scenic parkland, and 1.1 miles of hiking and biking trails. Conveniently located near shopping, dining, and entertainment, it's part of the acclaimed Papillion LaVista School District with schools nearby. Easy access to I-80 puts Offutt Air Force Base just 20 minutes away, offering both convenience and accessibility.



School District: Papillion La Vista
Location: 102nd & Hwy 370

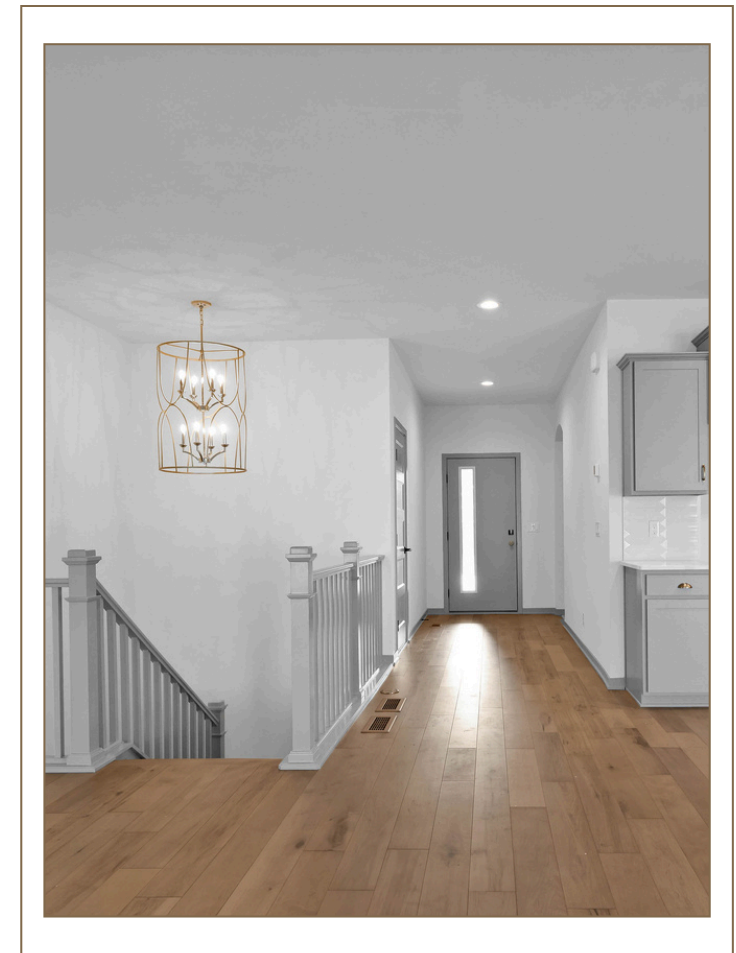
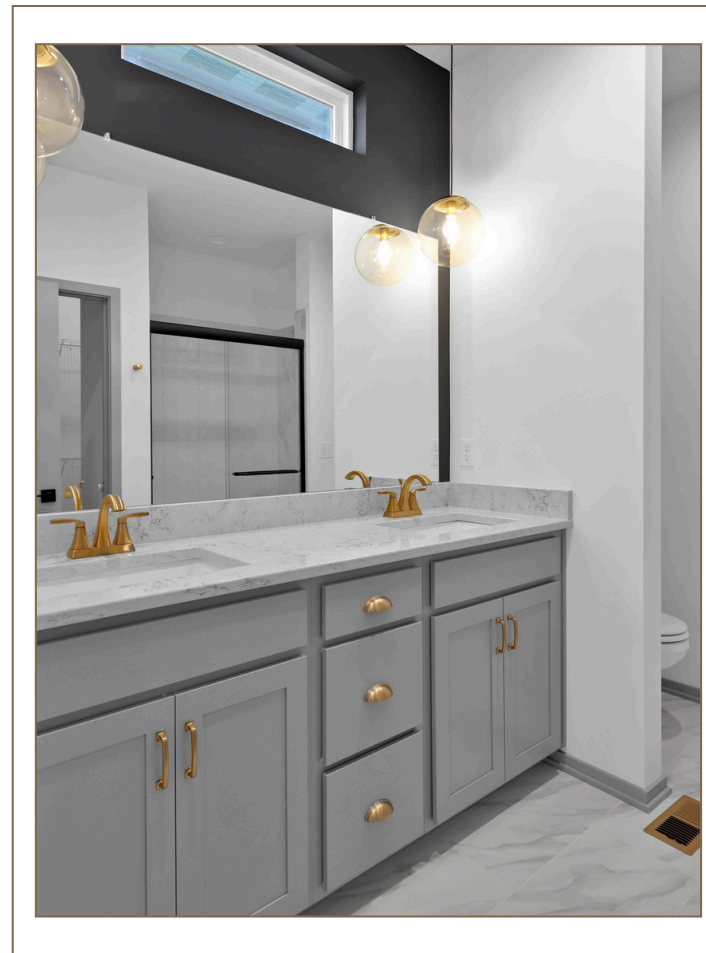
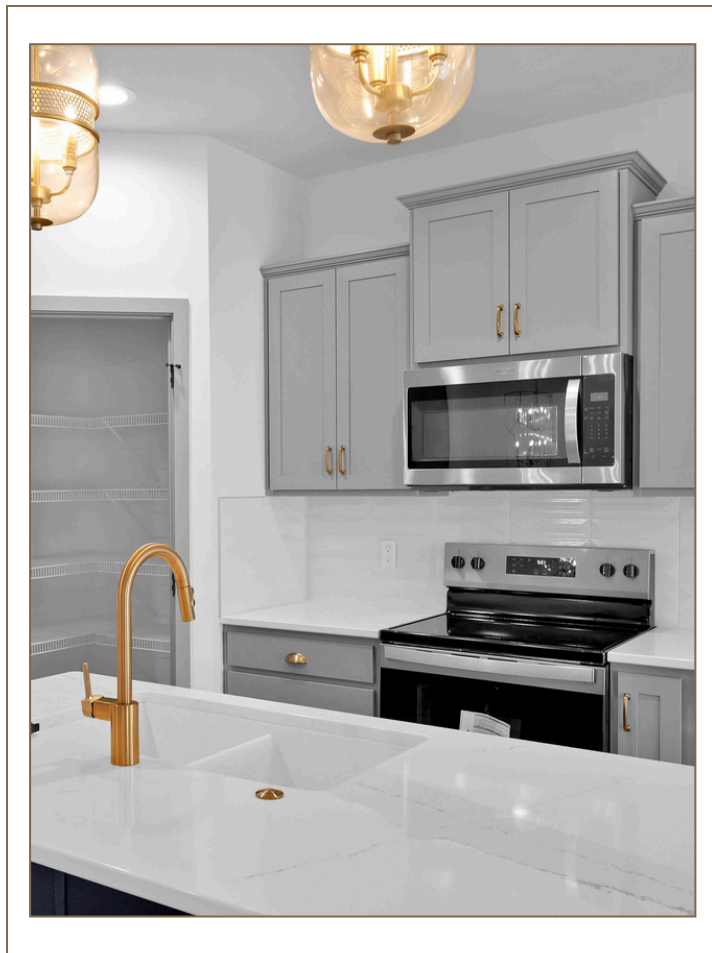
Granite Creek, Papillion's newest premier development at 102nd and Highway 370. Offering elevated lots with stunning views of downtown Omaha, the community features a mix of multi-family and commercial spaces. Enjoy tunnel access to Walnut Creek Lake, scenic trails, and nearby SumTur Amphitheater. Future amenities include a splash park, plus easy access to Papillion-La Vista Schools, dining, shopping, and highways.

RICHLAND HOMES ALSO BUILDS IN COUNCIL BLUFFS AND LINCOLN.

Aspire Collection

RANCH PLANS

RICHLAND
HOMES



T

TURQUOISE

1473
square feet

3 
bedrooms

2 
bathrooms

3 
car garage

TAKE A TOUR

MAIN LEVEL



CRAFTSMAN



FARMHOUSE



CLASSIC URBAN



TRADITIONAL

RICHLAND
HOMES

Better
Homes
Land Gardens
REAL ESTATE

THE
GOOD LIFE
GROUP

homelife
REALTY GROUP



B

BLUE SAPPHIRE

1529

square feet

3 

bedrooms

2 

bathrooms

3 

car garage

MAIN LEVEL



CRAFTSMAN



FARMHOUSE

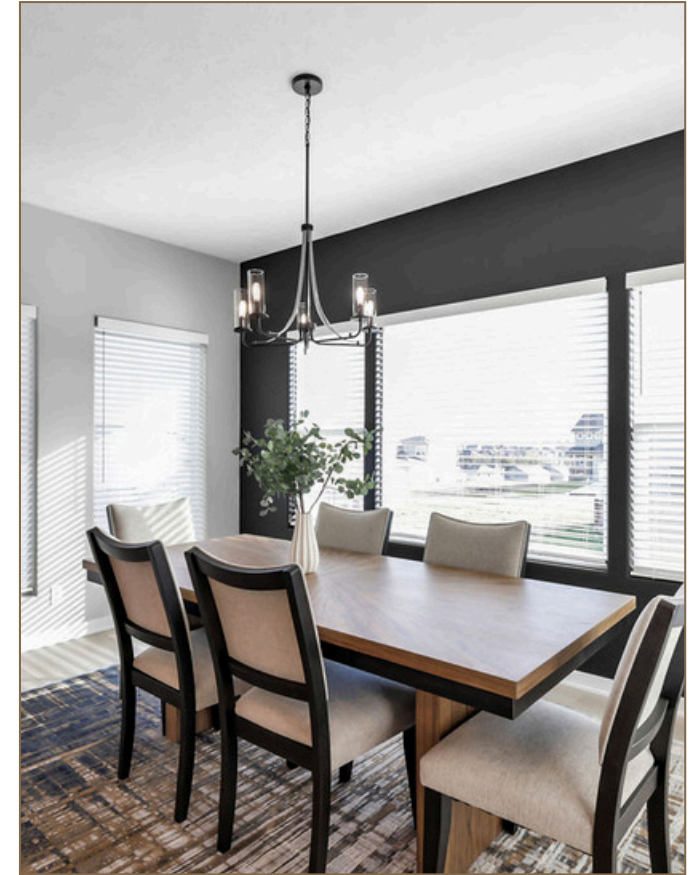


MODERN PRAIRIE

Aspire Collection

TWO STORY PLANS

RICHLAND
HOMES



P

PEARL

2170
square feet

3 
bedrooms

2.5 
bathrooms

3 
car garage

TAKE A TOUR

MAIN LEVEL



UPPER LEVEL



CLASSIC URBAN



FARMHOUSE



MODERN PRAIRIE



CRAFTSMAN

RICHLAND
HOMES

Better
Homes
Land Gardens
REAL ESTATE

THE
GOOD LIFE
GROUP

homelife
REALTY GROUP



D

DIAMOND

2188
square feet

4 
bedrooms

2.5 
bathrooms

3 
car garage

TAKE A TOUR

MAIN LEVEL



UPPER LEVEL



FARMHOUSE



TRADITIONAL



MODERN PRAIRIE

RICHLAND
HOMES

Better
Homes
Land Gardens
REAL ESTATE

THE
GOOD LIFE
GROUP

homelife
REALTY GROUP



R

RUBY

2434
square feet

4 
bedrooms

2.5 
bathrooms

3 
car garage

TAKE A TOUR

MAIN LEVEL



UPPER LEVEL



FARMHOUSE



TRADITIONAL



MODERN PRAIRIE

RICHLAND
HOMES

Better
Homes
and Gardens
REAL ESTATE

THE
GOOD LIFE
GROUP

homelife
REALTY GROUP



Q

QUARTZ

2358
square feet

4 
bedrooms

2.5 
bathrooms

3 
car garage

TAKE A TOUR

MAIN LEVEL



UPPER LEVEL



FARMHOUSE



CRAFTSMAN



MODERN PRAIRIE



Element Collection

TWO STORY PLANS

RICHLAND
HOMES



S

SLATE

1924
square feet

3 
bedrooms

2 
bathrooms

2 
car garage

TAKE A TOUR

MAIN LEVEL



UPPER LEVEL



FARMHOUSE



MODERN PRAIRIE



CRAFTSMAN

RICHLAND
HOMES





GRANITE

1981
square feet

3 
bedrooms

2 
bathrooms

2 
car garage

TAKE A TOUR

MAIN LEVEL



UPPER LEVEL



TRADITIONAL



MODERN PRAIRIE



CLASSIC URBAN

RICHLAND
HOMES

Better Homes
and Gardens
REAL ESTATE

THE GOOD LIFE
GROUP

homelife
REALTY GROUP



M

MASON

2164
square feet

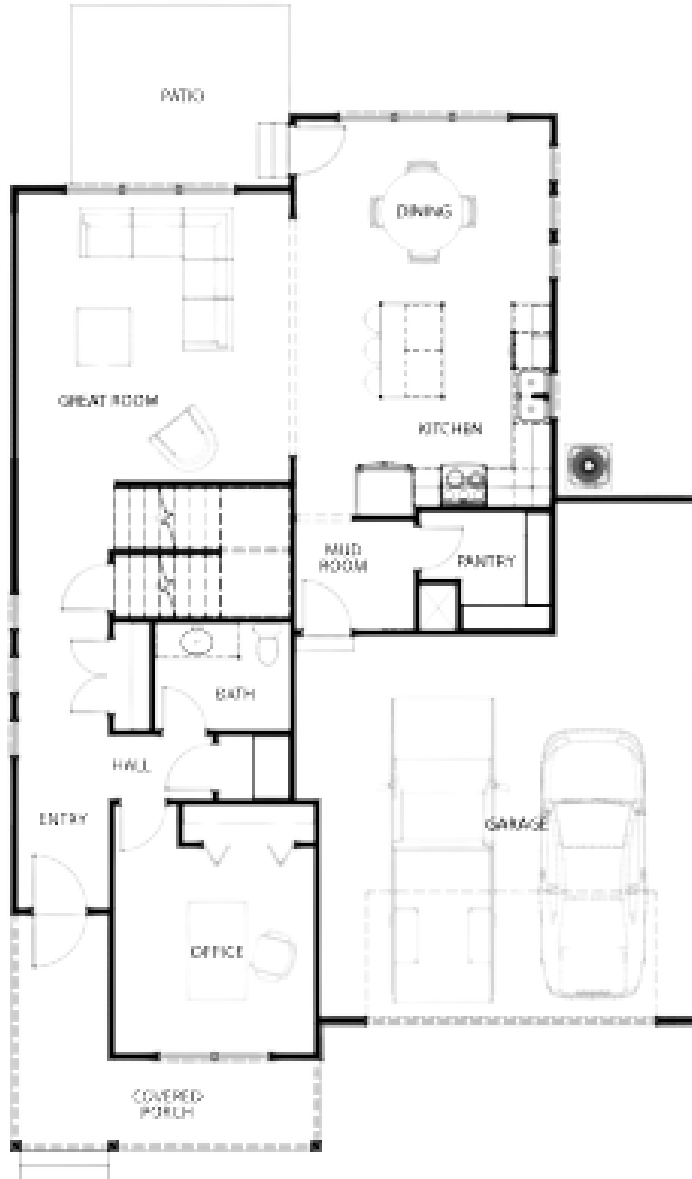
3 
bedrooms

2 
bathrooms

2 
car garage

TAKE A TOUR

MAIN LEVEL



UPPER LEVEL



FARMHOUSE



CONTEMPORARY



TRADITIONAL

RICHLAND
HOMES

Better
Homes
and Gardens
REAL ESTATE

THE
GOOD LIFE
GROUP

homelife
REALTY GROUP



S

SILVER

1795
square feet

3 
bedrooms

2 
bathrooms

2 
car garage

[TAKE A TOUR](#)



CRAFTSMAN



CONTEMPORARY



MODERN FARMHOUSE

MAIN LEVEL



RICHLAND
HOMES

Better
Homes
and Gardens
REAL ESTATE

THE
GOOD LIFE
GROUP

homelife
REALTY GROUP





GOLD

1527
square feet

3 
bedrooms

2 
bathrooms

2 
car garage

TAKE A TOUR

MAIN LEVEL



TRADITIONAL



MODERN PRAIRIE



MODERN FARMHOUSE

RICHLAND
HOMES

Better
Homes
and Gardens
REAL ESTATE

THE
GOOD LIFE
GROUP

homelife
REALTY GROUP





COBALT

1654
square feet

3 
bedrooms

2 
bathrooms

2 
car garage

TAKE A TOUR

MAIN LEVEL



SECOND LEVEL



CLASSIC URBAN



CRAFTSMAN



TRADITIONAL

RICHLAND
HOMES

Better
Homes
and Gardens
REAL ESTATE

THE GOOD LIFE
GROUP

homelife
REALTY GROUP

