

SIMRAD®

Go With Confidence



MARINE ELECTRONICS FOR
POWERBOATS AND SPORTFISHING



MARINE ELECTRONICS FOR POWERBOATS AND SPORTFISHING

Image © Billy Black

Image © Billy Black

The **SIMRAD** brand represents a rich history of innovation and product development spanning almost seventy years. Today Simrad Yachting continues that tradition, enabling cruising and sportfishing enthusiasts with a new generation of ultra-capable NSS evo3 multifunction displays. These displays provide an intuitive touchscreen interface to the latest in marine technology from revolutionary Halo™ Pulse Compression radar, to StructureScan® 3D sonar imaging, to Continuum autopilot systems. Combining advanced technology with intuitive design, SIMRAD electronics deliver easy-to-use functionality while freeing you to make the most of every minute on the water.



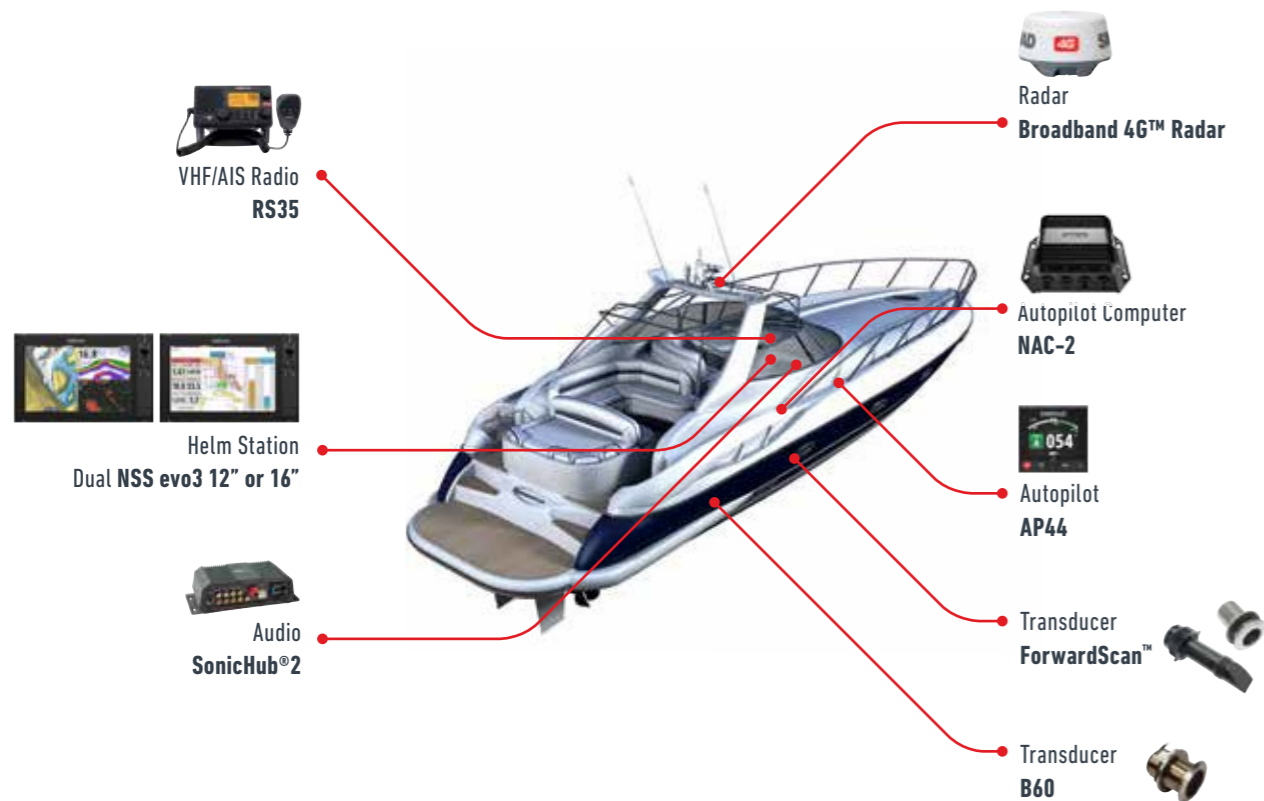
POWERBOAT SYSTEMS



Small & Medium Powerboats

Single station powerboats

26-50FT



SIMRAD POWERBOAT SYSTEMS

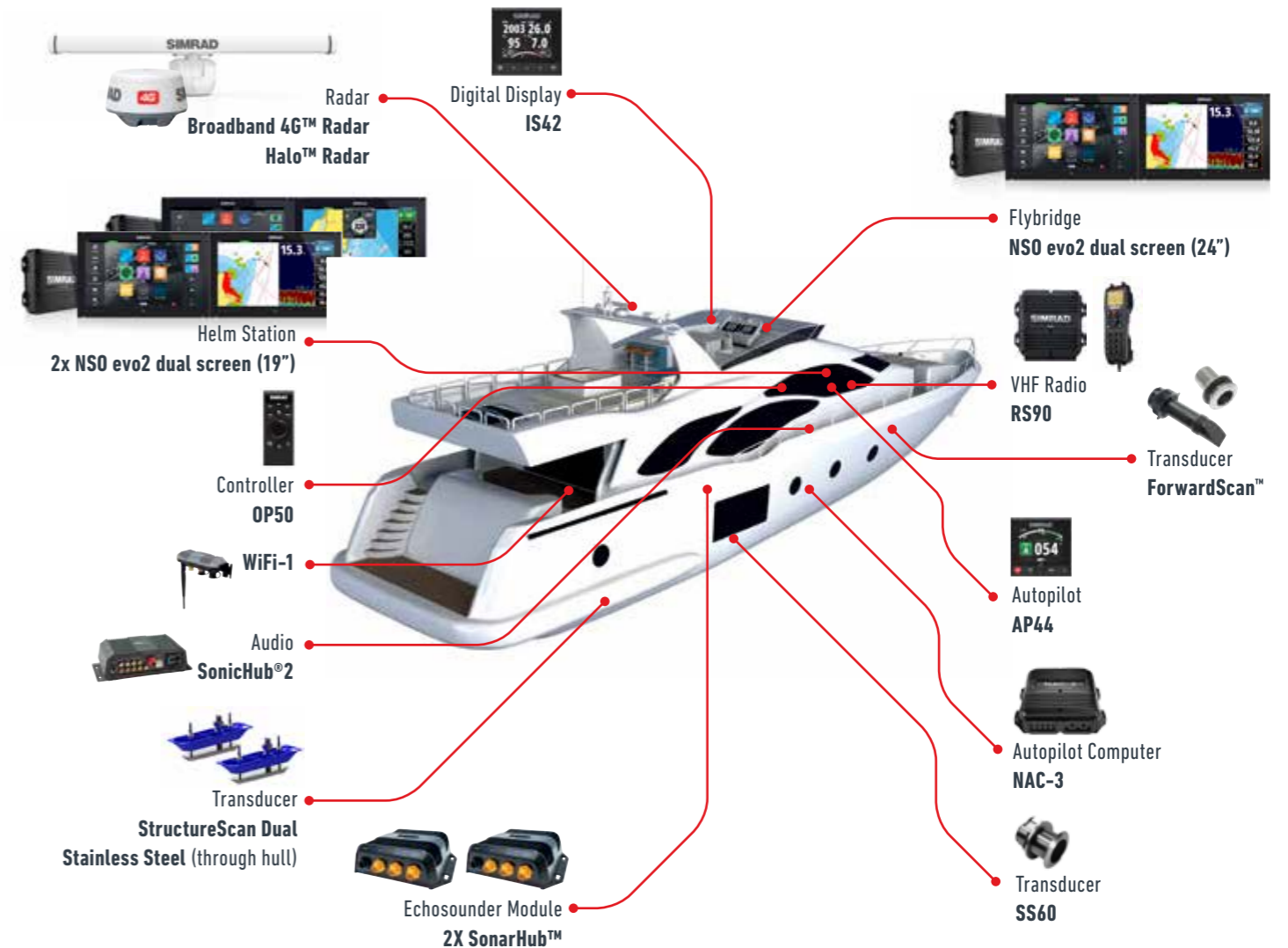
Simrad NSS evo3 displays and Glass Bridge systems place you in complete control of your cruising experience. Navigate confidently and safely with intuitive multi-touch controls, automatic routing, ForwardScan™ sonar, and a range of innovative radar solutions. Continuum autopilot frees your hands from the wheel, while you cruise to your own soundtrack with the fully integrated SonicHub®2 entertainment system.



Motor Yachts

Large dual station motoryachts

50-100FT



SPORTFISHING SYSTEMS



Centre Console

Single station sportfishers

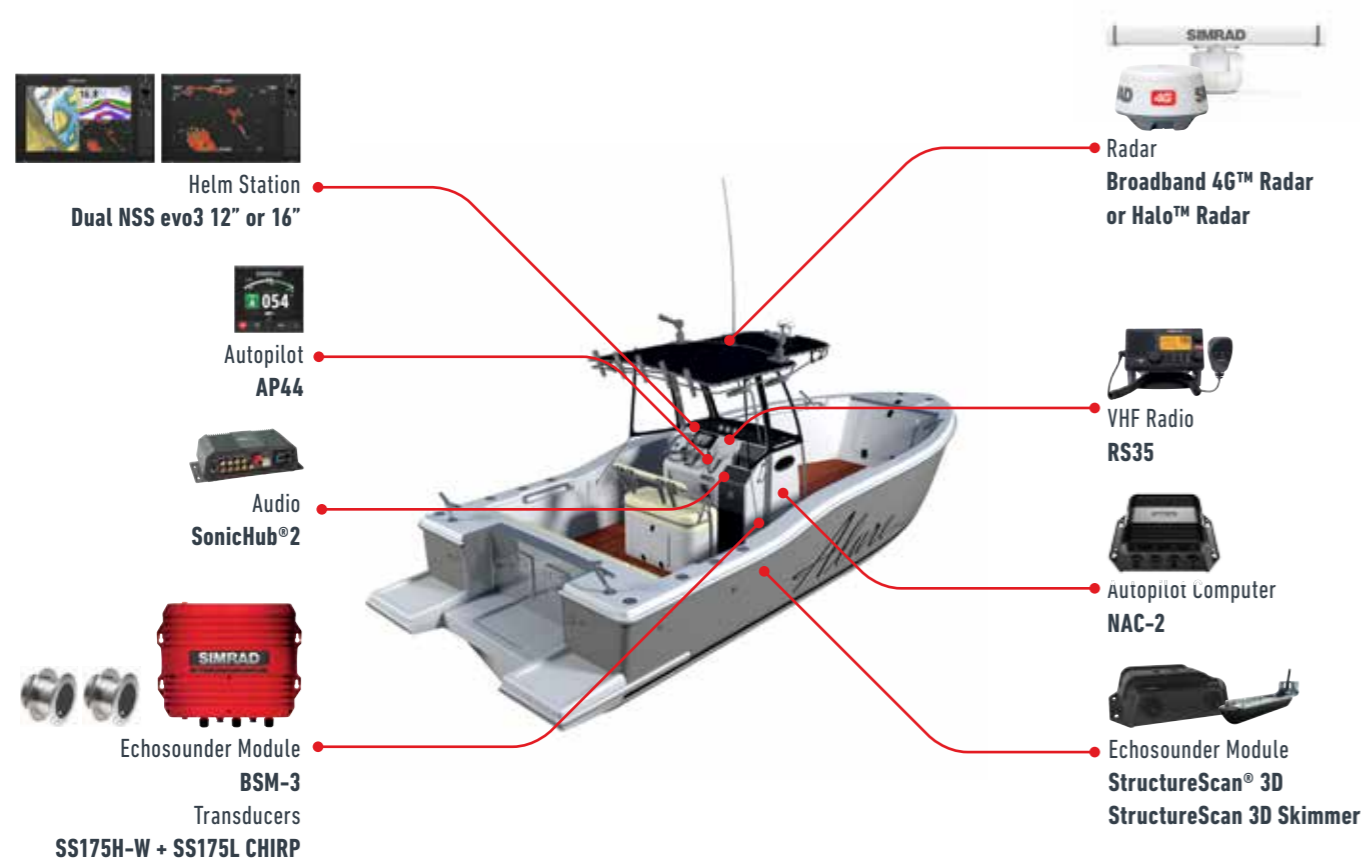
20-40FT



Large Flybridge

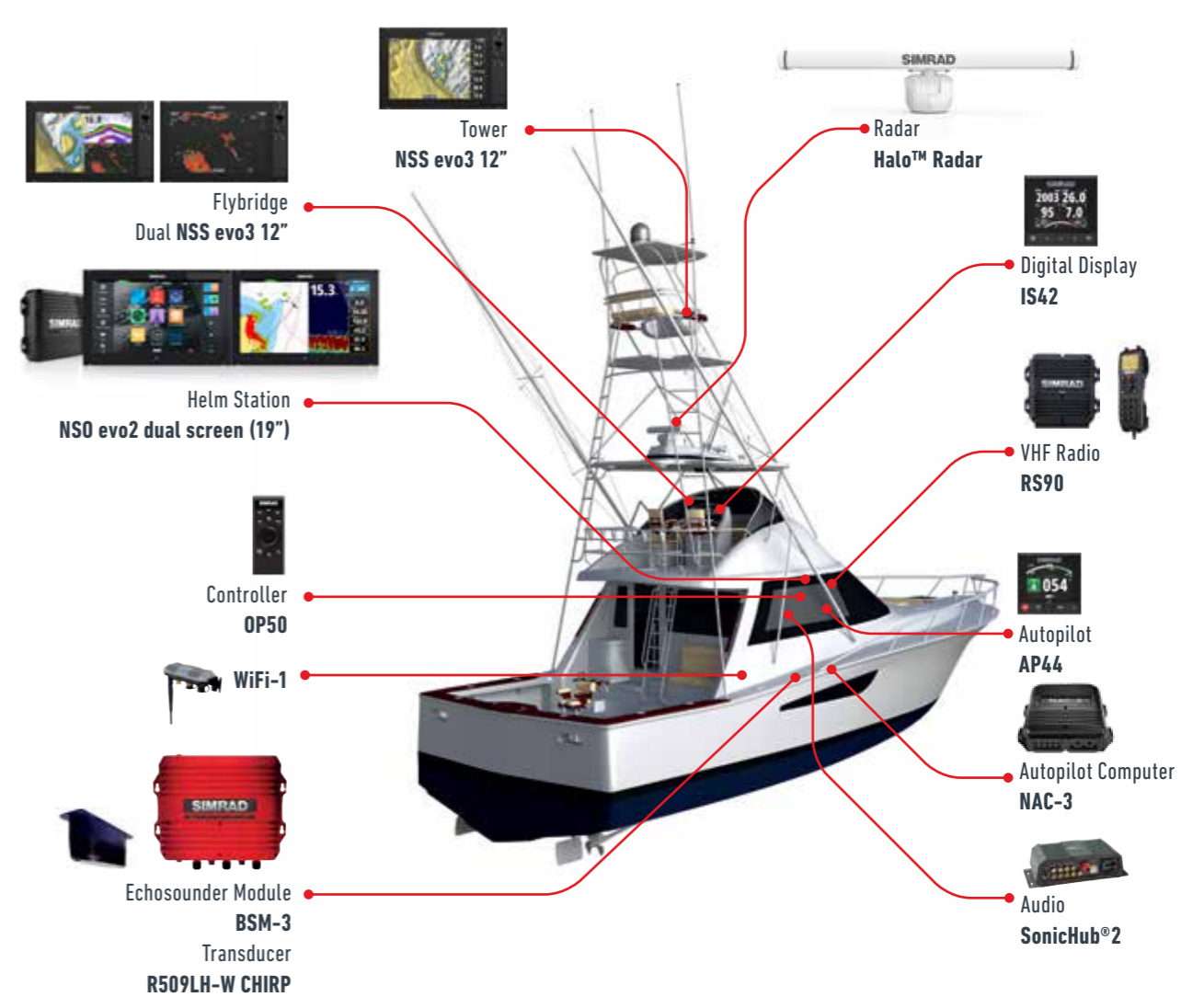
Large dual station motoryachts

40-70+ FT



SIMRAD SPORTFISHING SYSTEMS

Modular Simrad technology lets you create the perfect sportfishing system. Search deeper with CHIRP-enabled Broadband Sounder™ technology, wider with StructureScan® HD and 3D sonar imaging, and further with high resolution bird-finder radar. Take control with the latest fully integrated NSS evo3 multifunction displays, standalone Simrad fish finders, and dedicated radar control units – all built tough and designed for ease of use with wet or gloved hands.



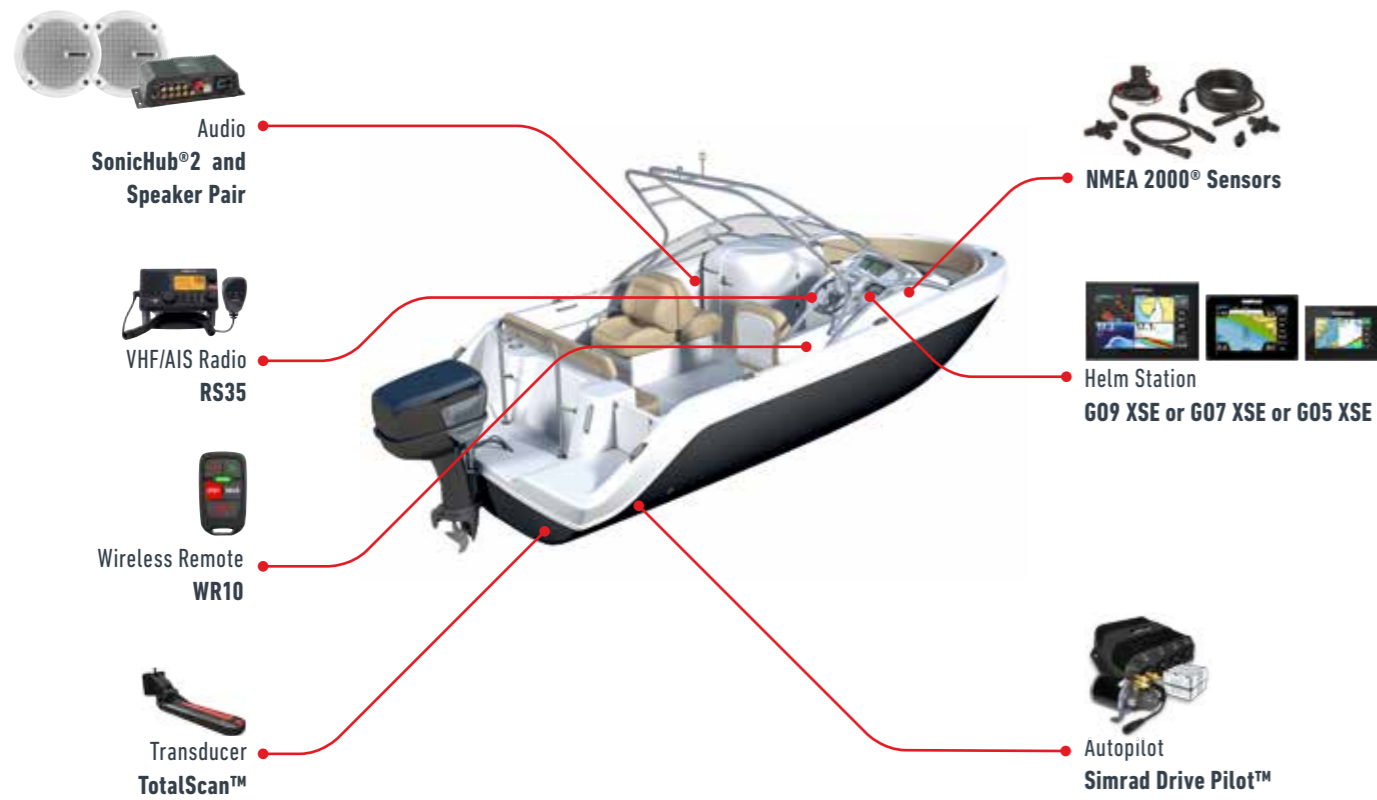
SPORTS/DAY BOAT SYSTEMS



Small Bow Riders or Bay Boats

Single station powerboats

UP TO **26FT**



SIMRAD RUNABOUT SYSTEMS

Simrad GO XSE chartplotter navigation displays are a perfect fit for runabouts of all types. These displays pair comprehensive navigation tools with a wide range of built-in cruising and fish finding sonar technology. With industry-standard connectivity, including support for compact and low-power Simrad radar systems on the all-new G09 XSE, it's easy to integrate and accessorise to suit your needs.

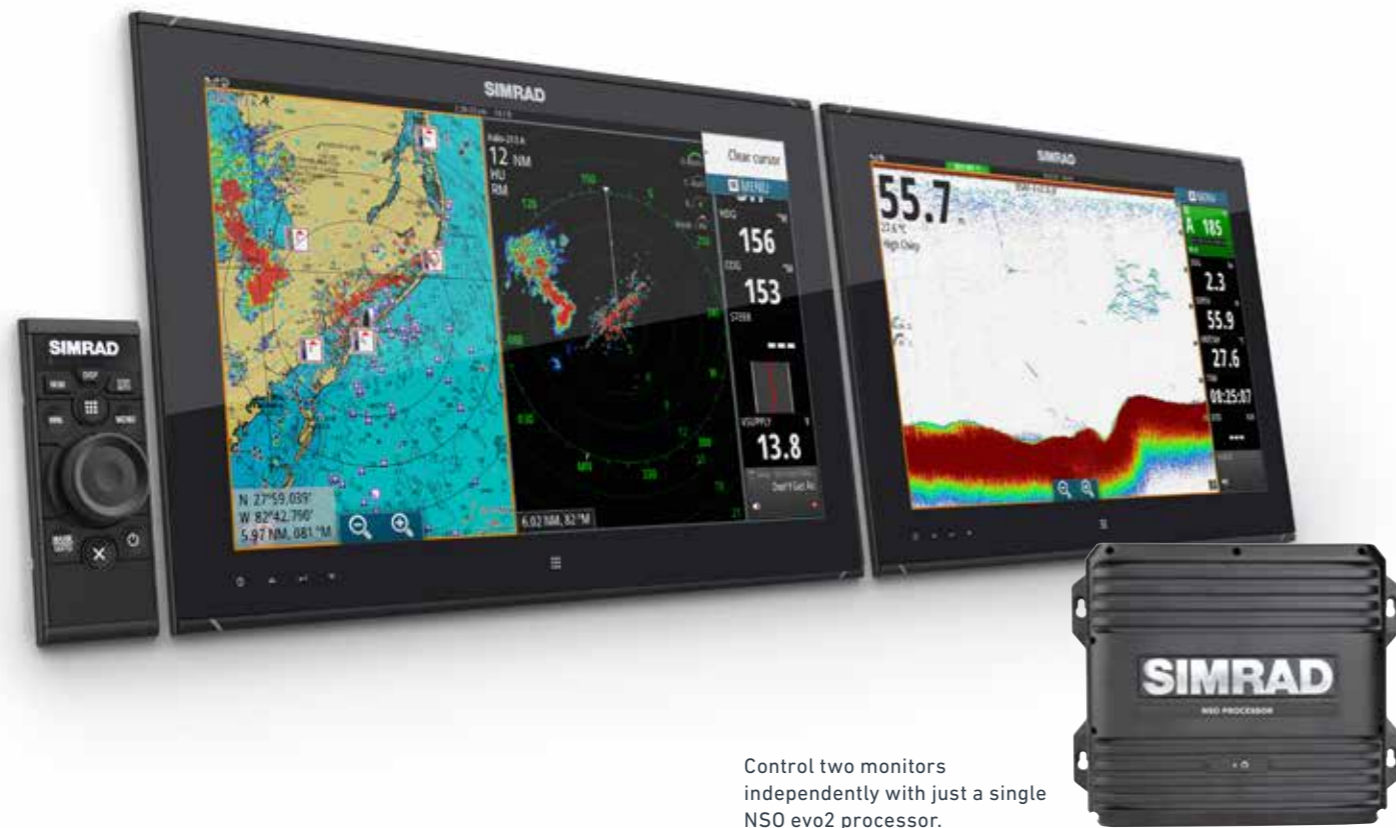


GLASS BRIDGE NAVIGATION SYSTEMS



NSO EVO2

Simrad NSO evo2 Glass Bridge systems are perfectly suited to blue water powerboats and sportfishing vessels.



Control two monitors independently with just a single NSO evo2 processor.

These systems deliver high processing power for fast charting, sonar, radar and entertainment across dual independent widescreen displays, with Simrad HEROiC User Interface for intuitive multi-touch control, TripIntel™ technology for smarter trip planning, and expansive integration capabilities.

NSO EVO2 MAIN FEATURES

PROCESSOR

- Dual independent HDMI monitor outputs
- Widescreen full HD monitor support
- Multi-touch interface with pinch-to-zoom
- Easily manage multiple displays with Bridge Control
- Integrates with the full range of Simrad radar solutions, BSM-3 Broadband Sounder, SonarHub with StructureScan® HD imaging, ForwardScan® sonar, and much more
- OP50 keypad & rotary controller option
- Widest choice of cartography options
- Works with Navionics® Autorouting™ & C-Map Easy Routing™
- Plan journeys based on fuel range, tide, and detailed trip history with TripIntel™
- Multiple video inputs
- Quad-core processor
- Wireless connectivity (requires WIFI-1 module)

MONITORS

- Low 8mm flush-mount profile and all-glass design enhances the look of any helm
- HDMI, DVI & Composite inputs
- 1000-nit high-brightness, sunlight-viewable screen
- Multi-touch control



Pinch-to-zoom
with Multi-touch.



Simrad M0 Monitors are available in 3 Sizes: 16-inch, 19-inch, and 24-inch

DESCRIPTION	PART NO.
NSO evo2 Single 16" Multi-Touch monitor bundle. With OP50 Controller and GS25 GPS Antenna. Embedded Insight Cartography	000-13565-01
NSO evo2 Single 19" Multi-Touch monitor bundle. With OP50 Controller and GS25 GPS Antenna. Embedded Insight Cartography	000-13566-01
NSO evo2 Single 24" Multi-Touch monitor bundle. With OP50 Controller and GS25 GPS Antenna. Embedded Insight Cartography	000-13567-01
NSO evo2 Dual 16" Multi-Touch monitor bundle. With OP50 Controller and GS25 GPS Antenna. Embedded Insight Cartography	000-13568-01
NSO evo2 Dual 19" Multi-Touch monitor bundle. With OP50 Controller and GS25 GPS Antenna. Embedded Insight Cartography	000-13569-01
MO16-T 15.6" wide touchscreen high bright monitor	000-11260-01
MO19-T 19" wide touchscreen high bright monitor	000-11262-01
MO24-T 24" wide touchscreen high bright monitor	000-11264-01
NSO evo2 Processor	000-10997-01

TRIPINTEL™



TripIntel™ technology tracks and displays the key information you need to plan safe and enjoyable days on the water. Make smart decisions with fuel range overlaid on charts, easy access to current and future tide levels, and a detailed history of your previous trips. While underway, the Cruise Performance Indicator makes it easy to tune trim and throttle to achieve maximum fuel economy and stay in the 'green zone', maximising range and keeping fuel costs down. Enjoy the benefits of TripIntel on your NSO, NSS evo2 or evo3, or GO-Series navigation displays.

MULTIFUNCTION DISPLAY NAVIGATION SYSTEMS



NEW NSS EVO3

The latest Simrad NSS evo3 displays feature breakthrough touchscreen technology and an expanded keypad for ultimate control.



Navigate, take control, and enjoy an unprecedented level of built-in functionality with NSS evo3. New SolarMAX™ HD display technology offers exceptional clarity and ultra-wide viewing angles, combined with an all-weather touchscreen and expanded keypad for total control in all conditions.

Find your way with an integrated high-speed GPS antenna and a wide range of cartography options to suit any locale. Cruise confidently with ForwardScan sonar, or fish easier with StructureScan® HD imaging and Broadband Sounder™ technology. New to NSS evo3, leverage true dual-channel CHIRP sonar to cover multiple depth ranges simultaneously. Built-in Wi-Fi enables access to GoFree® online services, and delivers smartphone and tablet integration to extend your display's reach well beyond the helm.



NSS EVO3 MAIN FEATURES

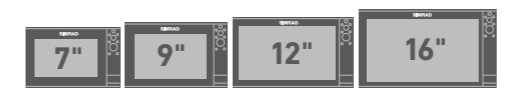
- Widescreen SolarMax™ HD display
- Reliable control in all conditions: switch seamlessly between multi-touch and a full keypad with rotary dial
- Integrated echosounder featuring dual-channel CHIRP, ForwardScan® sonar, and StructureScan® HD imaging
- Add StructureScan® 3D imaging, advanced Broadband Sounder™ capabilities and more via Simrad modules
- Expand your view with Halo™ Pulse Compression radar, Broadband 3G™/4G™, and other Simrad radar solutions
- Take complete control of Simrad autopilot systems with the NSS evo3 touchscreen or keypad
- NMEA 2000® connectivity enables integrated engine monitoring, sound system control, and much more
- Navigate accurately with an embedded high-gain 10 Hz GPS/GLONASS receiver
- Enjoy easier trip planning with TripIntel™ technology and support for Navionics Autorouting/C-Map Easy Routing
- Built-in GoFree™ Wi-Fi enables online features and smartphone monitoring and tablet control
- Choose flush-mount installation for a low-profile Glass Bridge look, or bracket-mount to install almost anywhere

DESCRIPTION	DESCRIPTION	PART NO.
NSS7 evo3, Combo MFD, Embedded Insight Cartography		000-13233-001
NSS9 evo3, Combo MFD, Embedded Insight Cartography		000-13234-001
NSS12 evo3, Combo MFD, Embedded Insight Cartography		000-13235-001
NSS16 evo3, Combo MFD, Embedded Insight Cartography		000-13236-001
NSS7 evo3, 4G Radar Bundle		000-13790-001
NSS9 evo3, 4G Radar Bundle		000-13791-001
NSS12 evo3, 4G Radar Bundle		000-13792-001

SOLARMAX HD

SolarMAX™ HD displays feature high-bright LED backlighting and advanced anti-reflective coatings to maximise visibility in any lighting condition, while IPS technology offers substantially wider viewing angles than common marine displays. Superior colour accuracy and a boosted high-resolution viewing panel, a wider operating temperature range, added moisture-proof optical layers, intuitive software, quick-response touchscreen control and protective coatings add to a quality build able to withstand the most rugged of marine conditions.

 **Pinch-to-zoom with Multi-touch.**



Simrad NSS evo3 multifunction displays are available in four screen sizes: 7-inch, 9-inch, 12-inch and 16-inch.

MULTIFUNCTION DISPLAY NAVIGATION SYSTEMS



NSS EVO2

With an easy to use tablet-style interface that's fresh but familiar, the NSS evo2 combines a multi-touch screen with push-to-select rotary dial for precision control and speedy response in any conditions, from calm to rolling seas.



Pinch-to-zoom with Multi-touch.



Simrad NSS evo2 Multifunction Displays are available in 4 Sizes: 7-inch, 9-inch, 12-inch and 16-inch.



NSS evo2 displays include a built-in echosounder with CHIRP technology, plus support for StructureScan® HD sonar imaging or ForwardScan™ sonar – simply plug in your choice of sonar transducers.

Built-in GPS, full autopilot integration, and smarter trip planning with TripIntel™ make NSS evo2 displays a perfect fit for the helm of any powerboat. Sportfishing enthusiasts will search less and catch more with onboard StructureScan® HD sonar imaging, CHIRP and Broadband Sounder™ technology, and integration with a wide range of other fishfinding technologies.

NSS EVO2 MAIN FEATURES

- Widescreen display with bright LED backlight
- Multi-touch interface with pinch-to-zoom
- Internal high-speed GPS antenna
- Built-in SonarHub with Broadband Sounder™ technology, CHIRP sonar and StructureScan® HD imaging
- Autopilot integration
- Widest choice of cartography options
- Works with Navionics® & C-Map®
- Plan journeys based on fuel range, tide, and detailed trip history with TripIntel™
- Works with our full range of radar and echosounder solutions, ForwardScan™ sonar, SonicHub®2 entertainment, and more
- Wireless connectivity (requires WIFI-1 module)
- NMEA2000®, 0183® & Ethernet connectivity

DESCRIPTION	PART NO.
NSS7 evo2 Combo Multifunction Display	000-11184-001
NSS7 evo2 Combo Multifunction Display, 3G Radar	000-13541-001
NSS9 evo2 Combo Multifunction Display	000-11190-001
NSS12 evo2 Combo Multifunction Display	000-11192-001
NSS16 evo2 Combo Multifunction Display	000-11196-001



NAVIGATION DISPLAYS



GO XSE

Get more from every day on the water with the Simrad G05, G07 and G09 XSE, a perfect fit for compact sportboats and dayboats.



Behind its super-bright touchscreen lies a chartplotter with built-in GPS receiver, and Wi-Fi access to the latest charts and updates. Control your onboard sound system, monitor engine data and more over NMEA 2000®, and choose from an array of built-in sonar technologies: cruise with confidence using ForwardScan™ forward-looking sonar, or find fish like a pro with Broadband Sounder™ CHIRP sonar plus StructureScan® HD SideScan and DownScan Imaging™.

GO XSE MAIN FEATURES

- Easy to use multi-touch interface
- Full-featured chartplotter with widest available cartography support (Insight, Navionics, C-MAP®)
- Plan smarter with TripIntel™ technology
- Support for Navionics and C-MAP®
- Flush or bracket mount display
- Widescreen with bright LED backlight
- High-speed 10 Hz GPS receiver
- Built-in Broadband Sounder™, CHIRP sonar, StructureScan® HD imaging or ForwardScan™ sonar support (transducer required)
- Built-in GoFree™ Wi-Fi
- NMEA 2000® compatible
- Radar display for Simrad Broadband 3G™/4G™ and Halo™ Pulse Compression radar systems (G09 XSE only)
- Dual microSD card slots (G09 XSE only)

G09 XSE: Expand Your View with a Simrad Radar Solution

The Simrad G09 XSE is a full-featured radar display with plug-and-play connectivity to Simrad Broadband 3G™, Broadband 4G™, and Halo™ Pulse Compression radar systems. Cruise confidently through crowded harbours, navigate safely in poor visibility, keep an eye on distant weather cells, and find flocks of feeding birds that hint at good fishing spots. Automatic tuning helps to provide a clear radar picture in any conditions, while radar overlay combines radar data with navigational charts for an easy-to-interpret view of your surroundings.



Pinch-to-zoom with Multi-touch.



Simrad G0-Series Multifunction Displays are available in 3 Sizes: 5-inch, 7-inch and 9-inch.



Bracket mounting options

DESCRIPTION	PART NO.
G05 XSE, No Transducer	000-12451-001
G05 XSE, Med/Hi/Downscan	000-12452-001
G05 XSE, TotalScan	000-12675-001
G07 XSE, Embedded Insight Cartography	000-12454-001
G07 XSE, Embedded Insight Cartography, TotalScan	000-12671-001
G07 XSE, Embedded Insight Cartography, Med/Hi/Downscan	000-12672-001
G09 XSE, No Transducer	000-13210-001
G09 XSE, Med/Hi/Downscan	000-13211-001
G09 XSE, TotalScan	000-13212-001
G09 XSE, 4G Radar Bundle	000-13763-001

GO XSE MODEL COMPARISON

FEATURES	G05 XSE	G07 XSE	G09 XSE
Super-bright multi-touch screen	✓	✓	✓
Built-in WiFi	✓	✓	✓
Built-in CHIRP echosounder	✓	✓	✓
StructureScan capable	✓	✓	✓
TotalScan capable	✓	✓	✓
ForwardScan capable	✓	✓	✓
NMEA2000 networking	✓	✓	✓
Engine integration	✓	✓	✓
Autopilot integration	✓	✓	✓
Entertainment integration	✓	✓	✓
10Hz Built-in GPS	✓	✓	✓ (high sensitivity)
4-way screen split		✓	✓
Waypoints/Routes/Tracks sharing			✓
Radar capable			✓
Dual chart card slots			✓

CONNECTED BOAT



Simrad multifunction displays are at the forefront of marine technology, constantly expanding and improving the tools available to help you make the most of every minute on the water.

Expand your display system to suit your needs, through a wide range of Simrad performance modules including fish-finding and depth-charting echosounders, StructureScan® 3D sonar imaging, Broadband 4G™ and Halo™ Pulse Compression radar, autopilot, AIS, audio entertainment, and so much more.

SONICHUB®2

Bring your music on board with Bluetooth® streaming, AM/FM radio, and full Simrad Multifunction display integration.

- Control your music from your Simrad display
- Bluetooth streaming from smartphones and tablets
- Play MP3 files from a USB drive
- Connect to SiriusXM® satellite radio (US only)



WIFI

View your Multifunction display with your smartphone, or take control with your tablet, from anywhere on board.

- Free viewer app
- Free controller app
- Open protocol enables custom app development
- Remote software upgrades and service support

GPS HIGH SPEED GPS

Incredible position accuracy, however fast or slow you go.

- 16-channel 10Hz GPS antenna
- Superior signal acquisition
- Compact design
- Easily flush mounted

AIS AIS

Reduce the risk of collision with this see and be seen technology.

- Class B AIS transponders
- Transmit your location
- Track and identify AIS-equipped vessels
- AIS navigational overlay



HALO™ RADAR

See both near and far with an unprecedented mix of close and long-range detection.

- Available with 3, 4 or 6-foot array
- See closer than 90 metres (300 feet)
- Range up to 72NM with 6-foot array
- Navigate safely, monitor weather cells, and find birds with ease
- InstantOn™ startup from standby, ready in 16-25 seconds from power-on

BROADBAND RADAR™

Confidently navigate congested waterways and harbours with exceptional close-range performance.

- Innovative FMCW technology
- Range up to 36NM
- Eliminates "main bang" dead zone
- Efficient low-power technology
- Mount anywhere on board

ECHOSOUNDER MODULES

Innovative sonar technologies designed for every requirement.

- ForwardScan™ sonar
- StructureScan® 3D imaging
- Broadband Sounder with CHIRP



INSTRUMENTS

Flexible display units for vital data, including depth, boat speed, wind speed, and more.

- Highly visible full colour displays
- Integrate with Simrad Multifunction display or utilise as a stand alone unit
- Display data from NMEA 2000 engines and sensors

INDUSTRY WIDE INTEGRATION

Automate your onboard electronics and turn your vessel into a smart boat with integration from key industry partners.

- Loop by Naviop
- CZone
- VesselView by Mercury

ENGINE DATA

Display real time engine data on your Simrad Multifunction display from your NMEA2000® compatible engine such as:

- Fuel flow
- Engine temperature
- RPM
- Battery voltage



DSC-VHF

Versatile and rugged, with everything you need to communicate with other vessels, the shore and even individuals on board.

- Handheld and modular options
- Additional wireless handsets for complete mobility and intercom capability
- DSC and AIS built in to some models

AUTOPILOT

Award-winning, ocean-proven autopilot systems to suit any size and type of vessel.

- Dedicated control or Simrad display integration
- Predefined turn patterns
- Dodge function
- NoDrift steering



CONNECTED BOAT



RADAR



LOOP – FOR CUSTOMISED VESSEL-WIDE SYSTEM MONITORING AND CONTROL

Enhance your boat with vessel-wide monitoring and control capabilities. Loop extends the capabilities of selected Simrad systems to monitor and display a wealth of information. This includes engine status, performance, fuel and other tank levels, energy management for DC and AC power systems, and other data from a vast range of supported systems and sensors. This information is presented through easy-to-read numeric and graphical displays, logically arranged on pages related to specific areas of functionality such as switching, propulsion, or tankage. Loop is a bespoke vessel integration system that connects all vessel services with a single touch.



Control Page



Control Page

FEATURES

- Bespoke systems tailored to your vessel
- Monitor and control propulsion systems
- Control lighting, air conditioning, and other systems with digital switching
- Monitor fuel and other tank levels
- Manage on board electrical systems
- Secure remote access through compatible PCs, smartphones and tablets



Navigation Lights



Media Center



Light Scenarios



Doors & Hatches



Blinds & Curtains



Digital Switching



Electrical Services



HVAC



Bilge Pumps



Fuel



Batteries



Flap Trim / Tabs



Diesel Engines



Generators



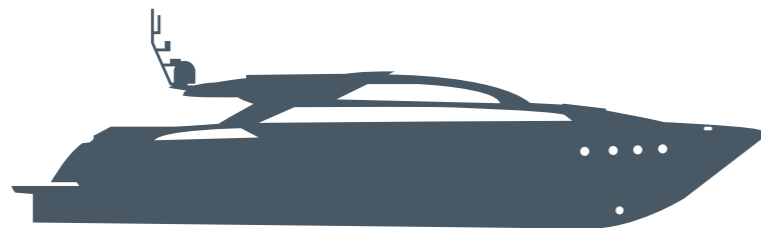
Levels Monitoring



Smoke & Fire Detect



Gyro Stabiliser



R2009 / R3016

The Simrad R2009 and R3016 are dedicated radar control units with integrated 9-inch portrait/16-inch widescreen displays, compatible with a range of Simrad radar solutions including Halo™ Pulse Compression, Broadband 3G™/4G™, and HD Digital Radar. An ideal safety and navigation accessory for offshore cruisers and sportfishing vessels, the R2009/R3016 offer versatile flush or bracket-mount installation options and intuitive keypad based operation for reliable control in all conditions.



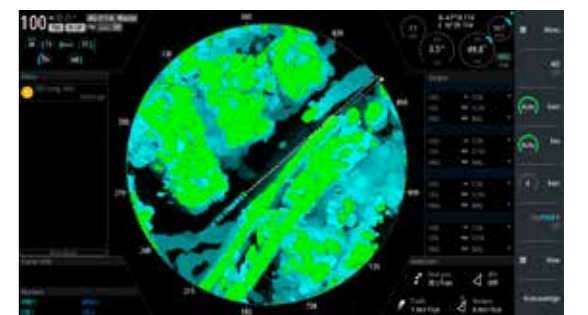
R2009 & R3016 are compatible with Simrad Halo™ Pulse Compression, Broadband 3G™/4G™, and HD Digital Radar systems

MAIN FEATURES

- Dedicated radar control unit
- Compatible with Simrad Halo™ Pulse Compression, Broadband 3G™/4G™, and HD Digital Radar systems
- Automatic tuning system
- Anti-sea-clutter technology for an optimum picture under adverse weather conditions
- MARPA target tracking
- Keypad and rotary-dial interface with 8 direct-access menu keys
- 9-inch portrait display (R2009) or 16-inch HD widescreen display (R3016)
- HDMI output for an optional secondary display or remotely-operated 'clone' station (R3016 only)
- Bracket and flush-mount installation options
- Ethernet, NMEA 0183 & NMEA 2000 connectivity

DESCRIPTION

DESCRIPTION	PART NO.
R2009, Radar Control Unit, 9"	000-12186-001
R2009, Radar 9", 3G Broadband Radome	000-12192-001
R2009, Radar 9", 4G Broadband Radome	000-12193-001
R2009, Radar 9", 3' HALO PUC Array	000-12194-001
R3016, Radar Control Unit, 16"	000-12188-001
R3016, Radar 16", 10KW, 4' Open Array	000-12195-001
R3016, Radar 16", 10KW, 6' Open Array	000-12196-001
R3016, Radar 16", 25KW, 7' Open Array	000-12197-001
R3016, Radar 16", 3' HALO PUC Array	000-12198-001
R3016, Radar 16", 4' HALO PUC Array	000-12199-001
R3016, Radar 16", 6' HALO PUC Array	000-12200-001



R3016 control unit paired with Broadband 4G™ radar.

RADAR



HALO™ RADAR

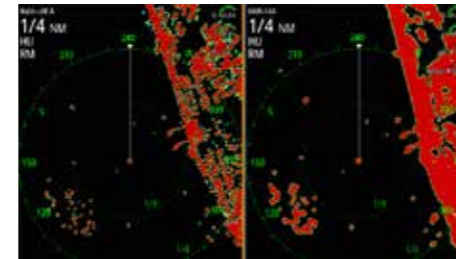
Revolutionary new Simrad Halo™ radar makes it easier than ever to navigate safely, keep an eye on the weather, and find flocks of birds that mark the best waters to fish. Solid-state Pulse Compression technology lets you see both near and far at the same time, on a single screen, from a single Halo™ radar array.

MAIN FEATURES

- Up to 72NM working range
- Beam Sharpening with Target Separation Control
- Dual range operation
- Advanced signal processing with Custom, Harbour, Offshore, Weather, and BIRD modes
- High-speed 48RPM operation
- InstantOn™, ready in 16-25 seconds from power-on, instant from standby
- MARPA target tracking, up to 10 targets (20 with dual range)
- Low electromagnetic emissions and radiation
- Low power consumption with 12/24V operation

	SHORT 0 — 0.1 KM (0 — 600 ft)	SHORT-MEDIUM 0.1KM — 2 KM (600 ft — 1 NM)	MEDIUM 2-20 KM (1 — 11 NM)	MEDIUM-LONG 20 — 50 KM (11 — 27 NM)	LONG >100 KM (>64 NM)
6kW PULSE	[Progressive bar from 0 to 100%]				
BROADBAND	[Progressive bar from 0 to 100%]				
HALO	[Progressive bar from 0 to 100%]				

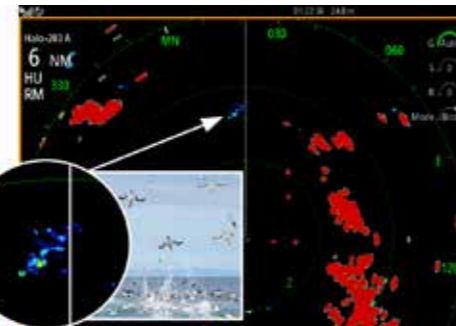
DESCRIPTION	PART NO.
Halo-3 Pulse Compression Radar	000-11469-001
Halo-4 Pulse Compression Radar	000-11470-001
Halo-6 Pulse Compression Radar	000-11471-001



Beam Sharpening technology delivers a more detailed picture, with improved separation of adjacent targets. Halo™ Radar (left) clearly resolves individual vessels and structures in a crowded anchorage compared to traditional 6kW pulse radar (right).



See closer than 90 metres (300 feet) on one side of the screen, and as far as 64 nautical miles on the other. Halo™ Radar truly functions as two independent radar systems in one, with no performance compromises at either selected range.



For offshore sportfishing enthusiasts and commercial fishers, birds mean fish. Halo™ Radar's dedicated BIRD mode makes it easy to locate feeding flocks from miles away, without introducing the distraction of high-gain screen clutter.



BROADBAND RADAR™

Enjoy a crystal clear image, right up to the bow of your boat, with our incredible Broadband Radar. Solid state technology does away with the traditional magnetron and instead offers lower emissions than a mobile phone, making these systems safe to mount anywhere, on any size boat. There are two Broadband Radar™ options, the outstanding Broadband 3G™ radar, which has a 28NM working range, and the revolutionary Broadband 4G™ radar, which has advanced features and up to a 36NM working range.

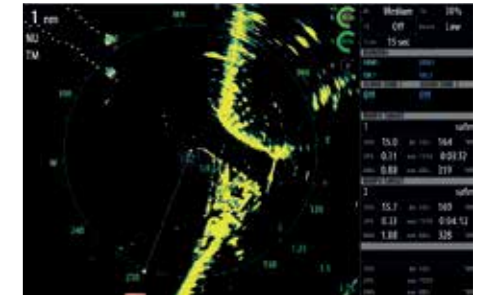
BROADBAND 3G™/4G™ RADAR FEATURES

- Crystal clear image
- Automatic clarity
- MARPA target tracking
- Dual guard zones
- InstantOn™ startup
- Low power consumption
- Extremely low emissions
- Quick installation

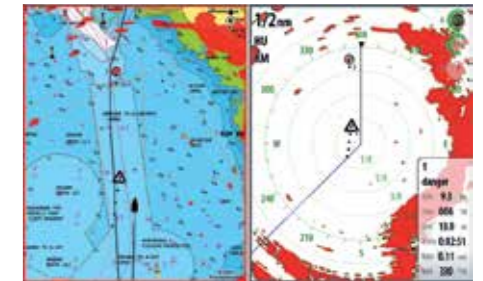
BROADBAND 4G™ RADAR ONLY FEATURES

- Up to 36NM working range
- Beam Sharpening
- High speed mode (48RPM)
- Dual Range
- Advanced target detection

DESCRIPTION	PART NO.
Broadband 4G™ Radar	000-10421-001
Broadband 3G™ Radar	000-10420-001



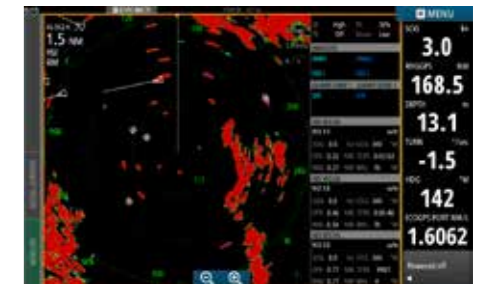
Display up to 10 MARPA targets



Chart/Radar Overlay



Unrivalled target discrimination



Crystal clear image



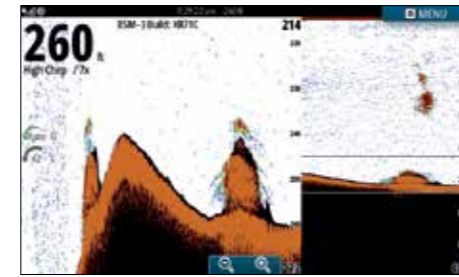
DAME CATEGORY WINNER

ECHOSOUNDERS

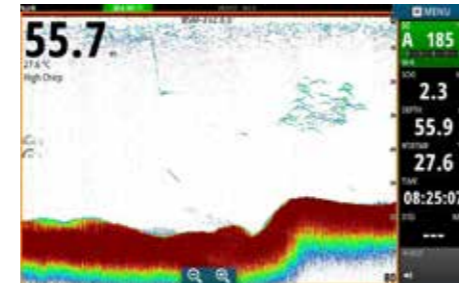


BSM-3 SOUNDER MODULE

Designed for professionals and serious sportfishing enthusiasts, the BSM-3 is a high performance, dual-channel broadband sounder with CHIRP technology. Its 3,000m / 10,000ft working range means you can venture further offshore, with the confidence to find the fish you're looking for.



High CHIRP separates the fish off the structure and shows in the zoomed image on the left.



Mid water pelagic fish. High CHIRP shows amazing fish separation, and paints the separate fish.

MAIN FEATURES

- 3000m range (transducer dependent)
- Dual-channel CHIRP echosounder
- Range of transducer & frequency options
- Industry leading target separation and clarity
- Easy to use with auto/manual modes
- Rugged all-aluminium housing

DESCRIPTION

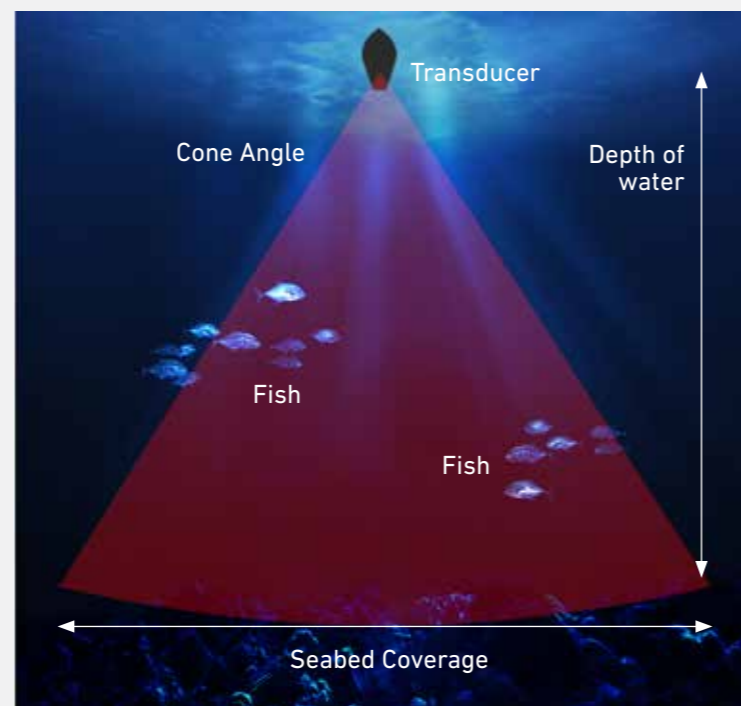
Broadband Sounder Module (BSM-3)

PART NO.

000-11742-001

TRANSDUCER SEABED COVERAGE GUIDE

Depth (m or ft)	Cone angle						
	6°	9°	11°	15°	20°	25°	45°
5	1	1	1	1	2	2	4
10	1	2	2	3	4	4	8
15	2	2	3	4	5	7	12
20	2	3	4	5	7	9	17
25	3	4	5	7	9	11	21
30	3	5	6	8	11	13	25
35	4	6	7	9	12	16	29
40	4	6	8	11	14	18	33
45	5	7	9	12	16	20	37
50	5	8	10	13	18	22	41
55	6	9	11	14	19	24	46
60	6	9	12	16	21	27	50
65	7	10	13	17	23	29	54
70	7	11	13	18	25	31	58
75	8	12	14	20	26	33	62
80	8	13	15	21	28	35	66
85	9	13	16	22	30	38	70
90	9	14	17	24	32	40	75
95	10	15	18	25	34	42	79
100	10	16	19	26	35	44	83



CHIRP AND BROADBAND TRANSDUCERS

For use with BSM-3, S2009, S2016, NSS evo3, NSS evo2, SonarHub

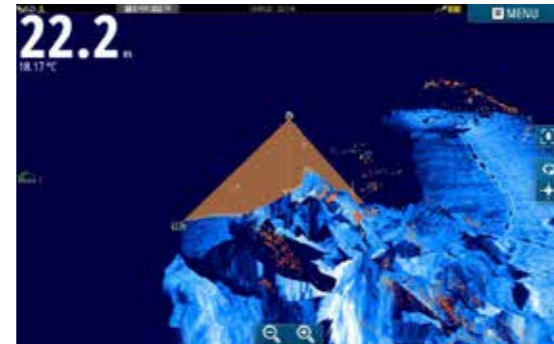
Transom Mount	Tilt °	Freq (kHz)	Power	Cone angle °	Connector	Part Number
P66		50/200	600W	45°/11°	9pin xSonic	000-11062-001
HDI SKIMMER		83/200/M/H			9pin xSonic	000-12728-001
HDI SKIMMER		50/200/L/H			9pin xSonic	000-12569-001
TM260		50/200	1kW	19°/6°	9pin xSonic	000-13904-001
TM150M		M (95-155)	300W	17°-26°	7pin	000-11302-001
TM275LH-W		L (42-65)/H(150-250)	1kW	16°-25°/25°	9pin xSonic	000-13770-001
Through hull	Tilt °	Freq (kHz)	Power	Cone angle °	Connector	Part Number
Bronze HDI	0°	50/200/L/H		45°/11°	9pin xSonic	000-13905-001
	12°	50/200/L/H		45°/11°	9pin xSonic	000-13906-001
	20°	50/200/L/H		45°/11°	9pin xSonic	000-13907-001
P319	0°	50/200	600W	45°/12°	9pin xSonic	000-13915-001
SS60 - 20°	20° (0° & 12° available)	50/200	600W	45°/12°	9pin xSonic	000-13786-001
SS164 - 20°	20° (0° & 12° available)	50/200	1kW	20°/6°	9pin xSonic	000-13918-001
SS260		50/200	1kW	19°/6°	9pin xSonic	000-13783-001
B150M - 20°	20° (0° & 12° available)	M (95-155)	300W	17°-26°	9pin xSonic	000-13922-001
SS75M - 20°	20° (0° & 12° available)	M (80-130)	600W	16°-24°	9pin xSonic	000-13910-001
SS75H	0°	H (130-210)	600W	9°-15°	9pin xSonic	000-13911-001
	12°	H (130-210)	600W	9°-15°	9pin xSonic	000-13912-001
	20°	H (130-210)	600W	9°-15°	9pin xSonic	000-13913-001
SS175L	0°	L (40-60)	1kW	21°-32°	9pin xSonic	000-13774-001
	12°	L (40-60)	1kW	21°-32°	9pin xSonic	000-13775-001
	20°	L (40-60)	1kW	21°-32°	9pin xSonic	000-13776-001
SS175M	0°	M (85-135)	1kW	11°-16°	9pin xSonic	000-13777-001
	12°	M (85-135)	1kW	11°-16°	9pin xSonic	000-13778-001
	20°	M (85-135)	1kW	11°-16°	9pin xSonic	000-13779-001
SS175H-W	0°	H (150-250)	1kW	25°	9pin xSonic	000-13780-001
	12°	H (150-250)	1kW	25°	9pin xSonic	000-13781-001
	20°	H (150-250)	1kW	25°	9pin xSonic	000-13782-001
B275LH-W		L (42-65)/H(150-250)	1kW	16°-25°/25°	9pin xSonic	000-13771-001
R509LH-W		LL (28-60)/H(150-250)	3kW	9°-23°/25°	9pin xSonic	000-13773-001
In Hull/Pocket/Chest Mount	Tilt °	Freq (kHz)	Power	Cone angle °	Connector	Part Number
P79		50/200	600W	45°/12°	7 pin	000-0136-03
M260		50/200	1kW	19°/6°	9pin xSonic	000-13914-001
CM275LH-W		L (42-65)/H(150-250)	1kW	16°-25°/25°	9pin xSonic	000-13772-001
Adaptors						Part Number
7 pin TXD plug to 9 pin MFD plug					For connecting 7 pin blue plug transducers to GO XSE, NSS evo3	000-13313-001
9 pin TXD plug to 7 pin MFD plug					For connecting 9 pin xSonic transducers to NSS evo2, SonarHub, S2009, S2016, BSM-3	000-12571-001

ECHOSOUNDERS

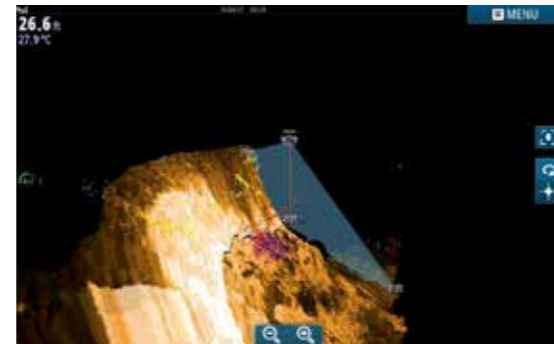


STRUCTURESCAN® 3D

StructureScan 3D imaging scans underwater terrain and fish-holding structure to create a high-resolution, 180-degree, three-dimensional view beneath your vessel. With this unique imaging view, anglers gain a better understanding of where fish and structure are located in relation to their vessel. StructureScan 3D imaging is available on Simrad NSS evo2, NSS evo3 and NSO evo2 displays, when used in combination with the StructureScan 3D module and 3D Skimmer® transducer.



StructureScan3D showing fish-holding around rocky structure near Nelson, New Zealand. Use Vertical Enhancement to make smaller structure appear larger and more visible.



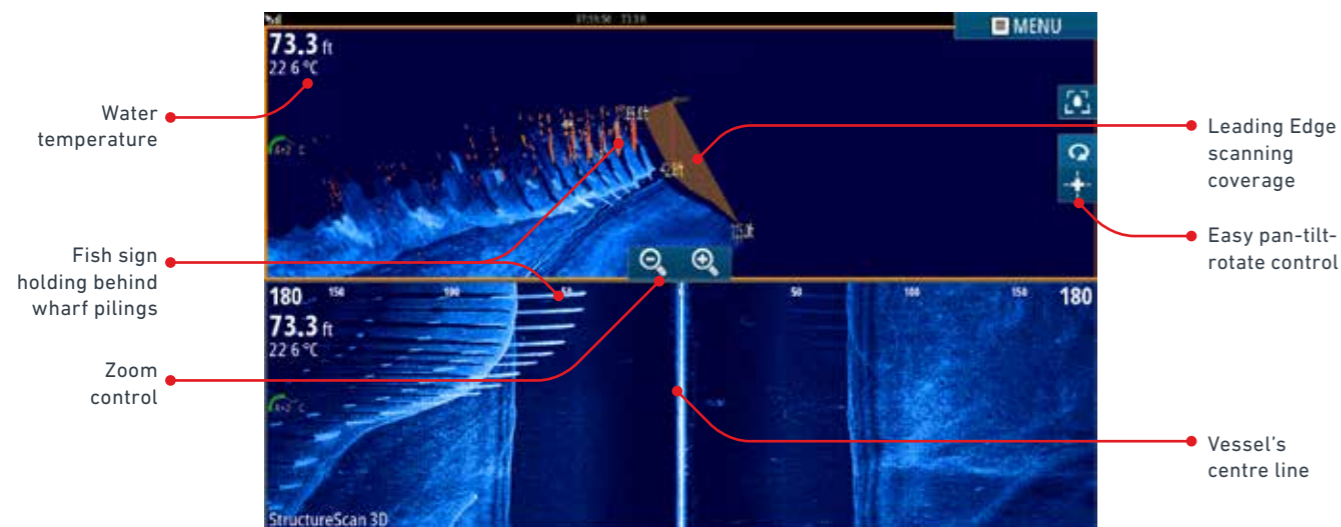
StructureScan3D's ScanTrack view showing two distinct fish groups of varying species or size holding at different depth contours against this drop off.

MAIN FEATURES

- Unrivaled SideScan image clarity
- High Definition (HD) and super-wide 3D scanning
- Leading Edge™ Scanning Reference
- SelectScan™ target identification
- Vertical Enhancement Control
- Waypoint Overlay
- ScanTrack™ pan-tilt-rotate controls
- Enhanced SideScan Skimmer® transducer design

DESCRIPTION

DESCRIPTION	PART NO.
StructureScan3D transducer and module	000-12395-001
StructureScan 3D module only	000-12397-001
StructureScan Stainless Steel Thru-Hull transducer	000-11459-001
StructureScan Stainless Steel Dual Thru-Hull transducer	000-11460-001



StructureScan3D ScanTrack highlights wharf pilings as fish-holding structure

TOTALSCAN™ TRANSDUCER

An all-in-one transducer, TotalScan™ matches proven broadband and CHIRP sonar with StructureScan® HD and DownScan Imaging™ technology, making it possible to target fish and search for fish-holding structure with the same transducer.



MAIN FEATURES

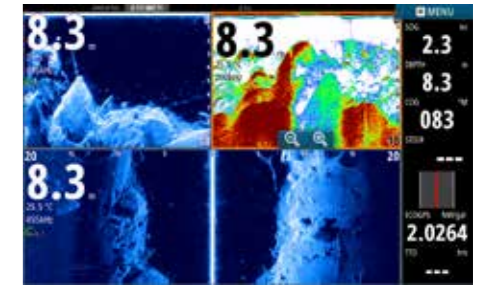
- 83/200 kHz Broadband sonar
- Medium/High-frequency CHIRP sonar
- DownScan Overlay
- StructureScan® HD imaging
- Easily-installed Skimmer® transducer design
- Compatible with NSS evo3, SonarHub & Simrad G05/G07/G09 XSE

DESCRIPTION

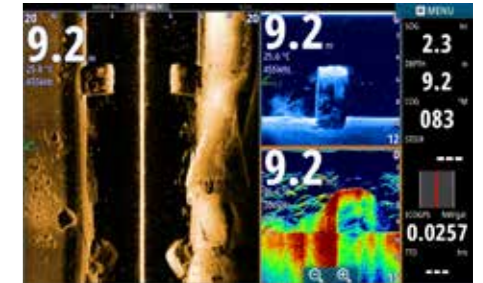
TotalScan Skimmer® transducer

PART NO.

000-12568-001



Underwater rocks. Top L clockwise: DownScan / Broadband Sonar / SideScan



Underwater bridge piling. Clockwise from top left: SideScan, Broadband Sonar, DownScan

SONARHUB SOUNDER MODULE

This all-in-one sounder solution combines StructureScan® HD imaging and CHIRP sonar. SonarHub is ideal for marking fish and tracking lure action and can provide easy-to-understand views of structure and bottom detail. Offering a powerful performance advantage in any situation, SonarHub provides high-definition detail to depths of up to 1,000 metres (3,500 feet). SonarHub's StructureScan HD functionality gives boaters picture-like displays for more productive fishing, diving and search and recovery operations.



MAIN FEATURES

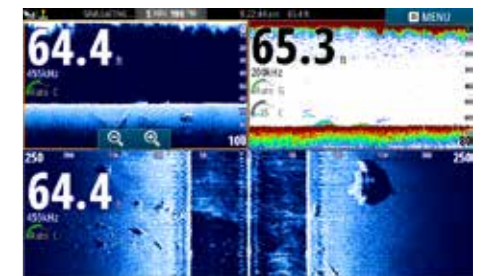
- Advanced Simrad Broadband Sounder™ technology offers high performance with low noise
- Simrad CHIRP technology works with traditional 50/83/200 kHz transducers
- Plug-and-play compatibility with Simrad and Airmar transducers
- Three Ethernet ports for connection to multiple Simrad displays
- Dual ports: Connect one single-frequency or CHIRP transducer, plus one StructureScan® HD or ForwardScan™ transducer

DESCRIPTION

SonarHub™ Module

PART NO.

000-11142-001



Wreck strewn across seabed with fish sitting on parts.



Underwater truck wreck (showing the left hand side of a SideScan view)

ECHOSOUNDERS



S2009 / S2016 ECHOSOUNDERS

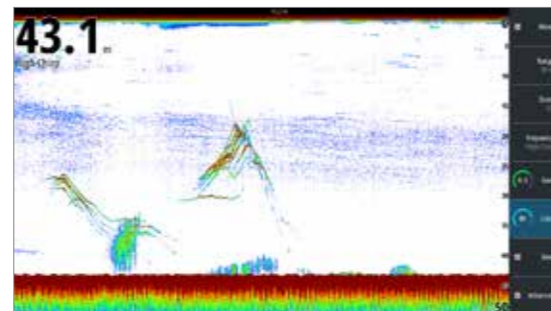
The Simrad S2000-Series Fish Finder combines CHIRP-enabled 1 kW Broadband Sounder™ sonar with a 9-inch portrait or 16-inch widescreen display for maximum vertical detail, and intuitive keypad-driven operation for reliable control in all conditions. These dedicated echosounders integrate seamlessly with multifunction displays and Simrad glass bridge systems, while offering charter captains and long-range sportfishing vessels the reliability of a self-contained sonar platform. Robust yet compact, the S2000-Series supports either bracket or flush-mount installation for an easy fit aboard any vessel.



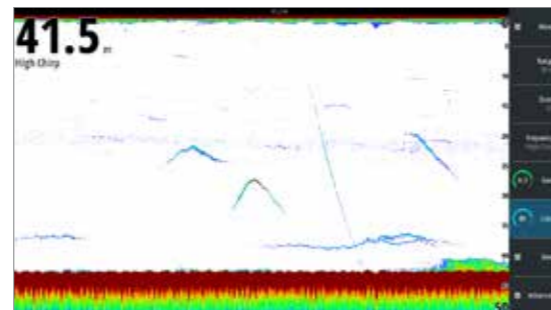
MAIN FEATURES

- Dedicated fish finder with integrated Broadband Sounder™ module and CHIRP technology
- High depth penetration and ping speed
- Vertical heave compensation
- 9-inch portrait or 16-inch widescreen display
- High brightness ideal for outside installation
- See clearly with White Line, White Marker, and Color Erase features
- Simple operation with 8 direct-access menu keys
- Bracket and flush mounting options (bracket included)
- Ethernet, NMEA 0183 & NMEA 2000 connectivity

DESCRIPTION	PART NO.
S2009, Echosounder, 9", No Transducer	000-12185-001
S2016, Echosounder, 16", No Transducer	000-12187-001



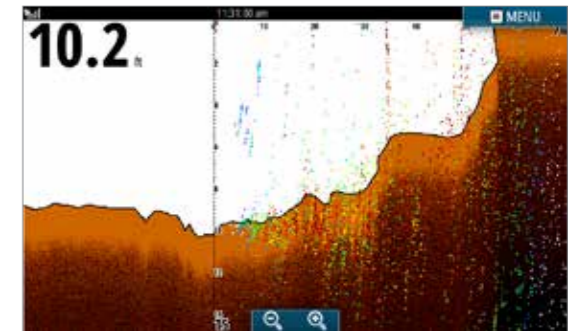
High CHIRP separates the mid water fish attacking a bait school near the bottom.



Individual mid water fish. Amazing detection of a jig shown as it drops from 10m to the bottom at 41m.

FORWARDSCAN™ SONAR

Know what lies ahead with Simrad ForwardScan. This forward-looking sonar provides a clear two-dimensional image of the bottom in front of your vessel, allowing you to navigate shallow or poorly-charted waters with confidence. With real-time updates and a forward-looking view of up to eight times your current depth, ForwardScan lets you relax and enjoy a safer day on the water.

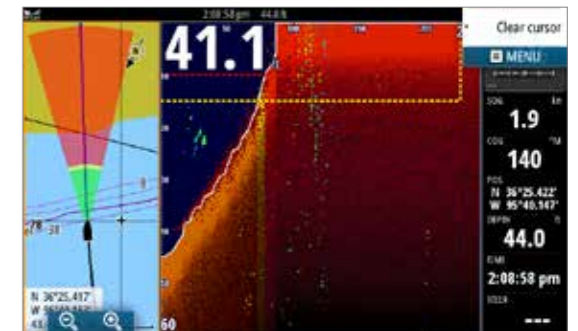


Bottom Colour Tracking offers a solid 2D rendering of the bottom ahead of your vessel for an uncluttered, immediately understandable view.

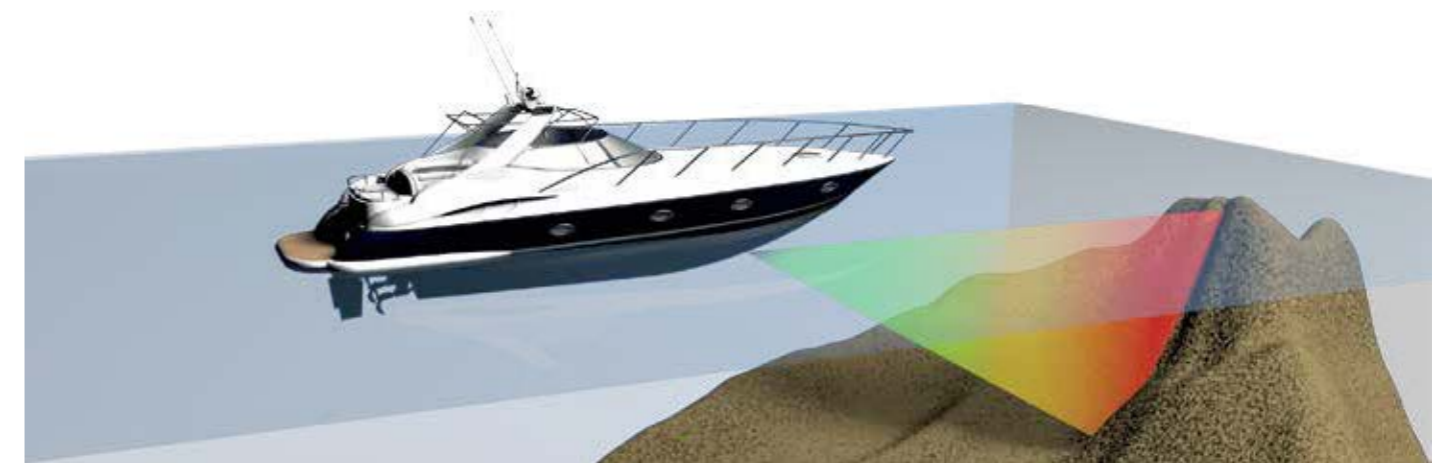
MAIN FEATURES

- Clear view of what's below the surface
- Bottom Colour Tracking for simplified bottom view
- Set up custom warning zones
- Avoid running aground
- Shallow depth alarm
- Built-in temperature sensor
- Through-hull fitting with stainless sleeve
- Easy to install
- Simrad NSS evo3, NSO evo2 (via SonarHub) & G05/G07/G09 XSE compatible

DESCRIPTION	PART NO.
Forwardscan Transducer (XDCR kit)	000-11674-001
Forwardscan Transducer (no sleeve or plug)	000-11675-001
ForwardScan Long Stem Transducer (with sleeve and plug)	000-13284-001



Heading Line View integrates ForwardScan depth data with the heading line on the navigation page of your Simrad display, with simple colour-coding to represent deep, medium, and shallow water.



8X MAXIMUM FORWARD VIEW OF 8X YOUR CURRENT DEPTH
e.g. at 3m (10ft) depth, see up to 24m (80ft) ahead.

4X NOMINAL FORWARD VIEW OF 4-5X YOUR CURRENT DEPTH
e.g. at 3m (10ft) depth, see 12-15m (40-50ft) ahead.

AUTOPILOTS & INSTRUMENTS



Simrad autopilot systems with Continuum technology offer proven performance and reliability for all types of sportfishing and powerboats from 5–30 metres (18–100 feet). It's easy to build a system to suit your boat, with a range of modular components and complete autopilot system packs. Take control with a dedicated autopilot display and keypad, or operate your autopilot from a compatible Simrad multifunction display to enjoy the added benefit of waypoint navigation.



AP44

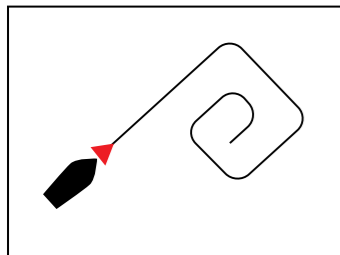
This feature-packed autopilot controller features a 4.1-inch full-colour display, intuitive keypad operation, and rotary-dial course adjustment. Add dedicated controls to your Continuum autopilot system, standalone or integrated with a Glass Bridge display system.

FEATURES

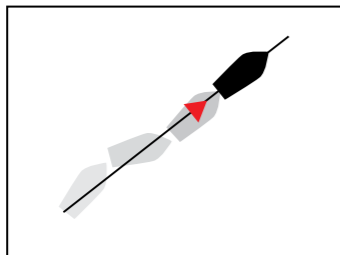
- Optically bonded display with wide viewing angle
- Intuitive autopilot control with simple menu
- Quick and easy rotary-dial course adjustment
- Automated turn patterns for hands-free manoeuvres
- No Drift steering holds your course against wind and tide
- Depth contour tracking helps fish ledges and drop-offs
- Easy setup with auto tuning and calibration
- Low-profile glass helm design

DESCRIPTION	PART NO.
AP44 Rotary Pilot Head	000-13289-001

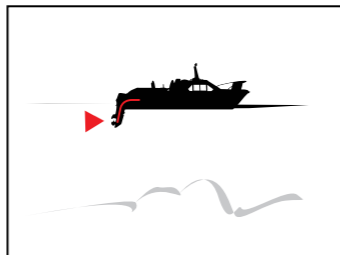
TURN PATTERNS



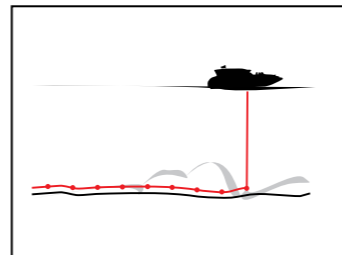
Integrated Turn Patterns



No Drift Mode



Virtual Rudder Feedback



Depth Contour Tracking

DRIVEPILOT™ / OUTBOARD PILOT

Do-It-Yourself autopilot packs for fingertip control from any Simrad GO XSE, NSS evo3 and NSO evo2 multifunction display. Affordable automatic steering for hydraulic-steer and cable steer engines. The DrivePilot™ provides robust performance in heavier seas with included rate compass.



Outboard Pilot

DESCRIPTION	PART NO.
DrivePilot™ Hydraulic Steer Pack	000-11750-001
Outboard Pilot Hydraulic Pack	000-11748-001
Outboard Pilot Cable steer Pack	000-11749-001

IS35

Easily visible day or night, the IS35 offers an interface to engine data, fuel efficiency, depth history and more. Connected by NMEA 2000®, the IS35 automatically detects and displays the most relevant information on a series of pre-set, customisable data pages.

- Simple button-driven menus
- Automatically displays data from NMEA 2000 engines and sensors
- Monitor up to two engines per gauge
- Stylish-low-profile design
- Single-cable installation

DESCRIPTION	PART NO.
IS35 Colour Instrument Display	000-13334-001

OP50

Available in portrait and landscape versions to suit any mounting location from dash to helm chair arm, this controller provides intuitive keypad and rotary-dial command of up to six NSS evo3 or NSO evo2 displays.

- Control up to six NSS evo3 or NSO evo2 multifunction displays
- High-quality aluminium control dial with built-in cursor functions
- Available in portrait or landscape orientation

DESCRIPTION	PART NO.
OP50 Remote, Portrait	000-12364-001
OP50 Remote, Landscape	000-12512-001

IS42

The multi-purpose IS42 instrument display uses a 4.1-inch full-colour screen to clearly present data from a wide variety of NMEA 2000® connected sensors and engines, and delivers complete Simrad autopilot control when paired with an OP12 keypad.

- Optically bonded display with wide viewing angle
- Display wind, speed, depth, engine data, AIS and more
- Intuitive operation with waterproof silicon keys
- Add an OP12 keypad for full Simrad autopilot control
- Low-profile glass helm design
- Certified NMEA 2000® connectivity

DESCRIPTION	PART NO.
IS42 Digital Display	000-13285-001
IS42 Speed/Depth Pack	000-13293-001

WR10

Take control of your autopilot from anywhere on board with this easy to use, pocket size, wireless remote controller. Perfect for all types of motor and fishing boats.

- 1 or 10 degree course changes
- Waterproof Bluetooth® base station
- Range of up to 30 metres

DESCRIPTION	PART NO.
WR10 Autopilot remote and base station	000-12316-001

OP12

The OP12 wired remote seamlessly integrates with Simrad autopilot systems to provide intuitive mode control, course adjustments, and power steering. Pairs with the IS42, and compatible with Simrad multifunction displays.

- Full autopilot control with the IS42
- Waterproof silicon keys
- Easy one-cable installation

DESCRIPTION	PART NO.
OP12 Autopilot Controller	000-13287-001

PRECISION-9

Based on reliable solid-state sensor technology, the Precision-9 Compass supplies heading and rate-of-turn information to Simrad autopilot, radar and navigation systems.

- Continual automatic calibration
- Heading, Rate Of Turn (ROT), pitch and roll output over NMEA 2000®
- Accurate and reliable solid-state sensor technology
- Easily adjustable mounting bracket allows bulkhead or up-mast installation

DESCRIPTION	PART NO.
Precision-9 Compass	000-12607-001

AUTOPILOTS & INSTRUMENTS



COMMS / AIS / AUDIO



NAC-3 AUTOPILOT COMPUTER

The high-current NAC-3 autopilot computer is designed for vessels over 10 metres (35 feet) in length, with the ability to run heavy-duty hydraulic drive pumps including the Simrad RPU-160 and RPU-300.

NAC-2 AUTOPILOT COMPUTER

The low-current NAC-2 autopilot computer is ideal for smaller vessels, designed to run the hydraulic drive pump or helm-drive cable system for vessels up to 10 metres (35 feet) in length.

DESCRIPTION	PART NO.
NAC-3 Autopilot Computer	000-13249-001

DESCRIPTION	PART NO.
NAC-2 Autopilot Computer	000-13250-001

SYSTEM PACKS

DESCRIPTION	PART NO.
AP44 VRF Pack Medium Capacity includes RPU-80 pump, NAC-2 and Precision-9	000-13291-001
AP44 VRF Pack High Capacity includes RPU-160 pump, NAC-3 and Precision-9	000-13562-001
NAC-2 Core Pack includes Precision-9 and RF-25 rudder feedback	000-13335-001
NAC-3 Core Pack includes Precision-9 and RF-25 rudder feedback	000-13336-001
NAC-2 VRF Core Pack includes Precision-9	000-13337-001
NAC-3 VRF Core Pack includes Precision-9	000-13338-001

RS35



This versatile and rugged fixed-mount VHF radio is easy to use, with extra-large high resolution display and smooth rotary controller. With DSC and AIS built-in, the RS35 includes everything you need to communicate.

- Class-D DSC Approved
- Built-in AIS receiver
- Loud and clear audio
- Dual/Tri watch function
- NMEA 2000® & 0183® connectivity

DESCRIPTION	PART NO.
RS35 AIS VHF	000-10790-001

HS35



The HS35 wireless handset works with your RS90 or RS35 radio to provide complete VHF, AIS and DSC functionality anywhere on board your boat, while also serving as an intercom between handsets and base station.

- Intercom function
- 100m range
- 8 hour battery life
- Inductive charging
- IPX7 waterproof

DESCRIPTION	PART NO.
HS35 Wireless Handset	000-10791-001

HH36



The HH36 is a GPS equipped hand held VHF radio with a loud 700mW speaker for clear communication in noisy environments. The HH36 is fully a water proof Class-D DSC VHF and floats in sea water.

- Class-D DSC Approved
- Built in GPS Receiver
- Selectable 5W/1W transmit power
- Large clear LCD display
- Waterproof and floats in sea water

DESCRIPTION	PART NO.
VHF HH RADIO, HH36, DSC, EU/UK	000-10784-001

WEATHER



WM-3 SIRIUSXM™ MODULE

Bring the power of an entire weather bureau to your Simrad evo2/ evo3 or G09XSE, including weather radar, forecasts, weather warnings and roadside fuel prices, plus up to 220 expanded audio channels — all controlled directly from your multifunction display.

DESCRIPTION	PART NO.
WM-3 SiriusXM™ Module (US)	000-11076-001



RS90 VHF RADIO SYSTEM

Not just a radio, the RS90 also functions as an AIS receiver, hailer, foghorn, and onboard intercom. A 30 second record and replay means you never miss anything vital, and with up to 6 handsets you need never be out of reach.

- Modular system with built-in AIS receiver
- Supports up to 4 wired + 2 wireless handsets
- PA/Hailer and foghorn
- 30-second Record and Playback
- IPX7 waterproof

DESCRIPTION	PART NO.
RS90 BB AIS VHF RX system	000-11225-001
RS90 Handset & speaker kit	000-11226-001
RS90 Handset	000-11228-001

NAIS-400

Reduce your risk of collision with this fully integrated Class-B AIS transponder – essential for navigating busy shipping lanes and congested ports. The NAIS-400 networks easily with any NSS, NS0 or G0 XSE display and Simrad RS VHF system.

- Class-B Approved AIS Transponder
- Integrates with existing Simrad MFD & VHF
- NMEA 2000®, 0183® connectivity
- IPX7 waterproof
- Low power consumption

DESCRIPTION	PART NO.
NAIS-400 with GPS	000-10980-001
NSPL-400 VHF Antenna Splitter	000-10982-001

SONICHUB®2

The SonicHub2 system features Bluetooth® connectivity to stream music from smartphones and tablets, built-in AM/FM radio, music and video playback from USB drives, and SiriusXM® satellite radio support* – all controlled from your Simrad display.

- 50W x 4 amplifier
- Dual USB ports
- Video output via Composite RCA for playing video files from a USB drive
- Pre-amp Zone 3 and subwoofer outputs
- Dual Stereo AUX input (AUX1, AUX2)

DESCRIPTION	PART NO.
SonicHub2 Module	000-12302-001
Simrad Marine Speakers	000-12305-001

*US only, requires Simrad WM-3 module.

CARTOGRAPHY

GOFREE™

Insight Genesis™ Fish More Search Less



With a free GoFree® account, your recorded sonar logs can be used to create custom Insight Genesis® maps with amazing detail and one-foot contours that show key fish-holding areas for greater success on the water.

You can also take advantage of the Insight Genesis Social Map layer functionality, by downloading free custom maps submitted by other members of the Insight Genesis™ community.

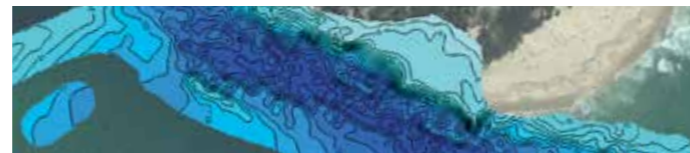


BENEFITS OF INSIGHT GENESIS™

- Transform your sonar logs into free custom maps
- View, Download & Contribute to online Social Map water bodies across the globe
- Customize maps with 1-, 3-, 5- or 10-foot blue-shaded contours
- Unlimited map creation, upload, viewing & storage of all your trips' history
- Merge multiple sonar logs into a single map
- Compatible with all NSO evo2, NSS evo2, NSS evo3 and GO XSE displays

PREMIUM INSIGHT GENESIS™ SUBSCRIPTION

- View and Download Vegetation and Bottom Hardness map overlays
- Highlight depth ranges with custom colors on NSO evo2, NSS evo2, NSS evo3 and GO XSE displays
- Option to merge maps with Social Map or keep them private



C-MAP MAX-N+

C-MAP MAX-N+ charts provide accurate, up-to-date information, unique features and specialized content to enhance every boating adventure.

- High Resolution Bathymetric (HRB) charts for coastal areas
- Dynamic Tides and Currents
- High-Resolution Aerial Photos with Harbor and Approach Details for enhanced situational awareness
- Marina Info/Port Services helps traveling boaters enjoy smooth sailing worldwide
- Sport Fishing Data (U.S. Only) offers information on wrecks/reefs, Fish ID photos, localized rules/regulations, etc.
- Marine Protected Areas provide boundary and detailed information on Marine Parks and other areas
- Custom Depth Shading for easier identification of different depth ranges
- Dynamic Raster Charts provide the traditional look of paper charts
- Local and Wide coverage areas

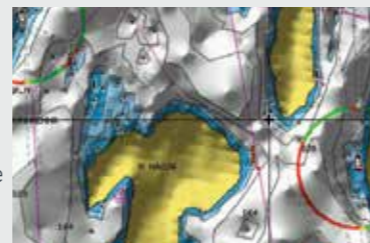
C-MAP MAX-N

MAX-N provides boaters with accurate C-MAP chart detail, including Depth Areas and Contours, Spot Soundings, NavAids, Light Sectors, Wrecks/Obstructions, Anchorage Areas, Small Craft Facilities and more. Available in Local and Wide coverage areas.



NAVIONICS®

Navionics® is the world's largest and most experienced provider in worldwide electronic marine cartography. Navionics charts offer optional high-definition layers, including 3D, Satellite Overlay, Panoramic Port Pictures, Dynamic Tides & Currents, and much more.



GoFree® is powering the digital marine ecosystem with offerings like GoFree Shop, GoFree HOOKED and GoFree Controller apps, and the GoFree Track Vessel Management Solution.

With GoFree, anglers can upload and download maps and update software directly from their fishfinder/chartplotter utilising the built-in wireless connectivity of NSS evo3 and GO XSE displays, or the optional GoFree Cloud capability of NSS evo2 and NSO evo2 systems with the WiFi-1 module.



GOFREE SHOP

GoFree® Shop is a one-stop shop for marine-mapping needs that gives boaters the capability to download purchases or Insight Genesis® custom maps to a personal computer or directly to NSO evo2, NSS evo2, NSS evo3 and GO XSE displays, for immediate use.



GOFREE LINK

Available for download on both Android and iOS platforms, GoFree® Link is a free app that allows users to view Lowrance®, Simrad® and B&G® multifunction displays from a smartphone or view/control the displays from a tablet.

GOFREE HOOKED

A free fishing app for freshwater and saltwater anglers, GoFree® HOOKED allows anglers to challenge friends, family or anglers from the global GoFree HOOKED user community to participate in a real-time competition, and then follow the results via the in-app live leaderboard.

Whether competing or fishing alone, the app allows anglers to save detailed trip logs, fish photos and fish details like weight, length and species.



GOFREE TRACK + GOFREE VESSEL

A powerful vessel management tool, GoFree® Track monitors, logs and transmits reports to the GoFree Vessel web interface for vessel metrics like NMEA 2000® engine and J1939 diesel engine data – including RPM, engine hours, battery state, oil pressure/temperature, coolant temp, fuel consumption, engine alarms – and NMEA 2000® Network information like depth, boat speed, heading, wind speed/direction and fuel level. It also monitors security information from high bilge water, excessive bilge pump activity, high or low onboard temperatures, battery voltage, shore power connection and access door sensors.



Discover other marine electronics & navigation on our website.