



The FAMILY *of*
EMANUEL CARTER

TABLE *Of* CONTENTS



THE NETTIE CARTER FAMILY

- 02 **THE NETTIE CARTER FAMILY**
Haskel, James W, Booker T., Mary and Mark
- 05 **THE HASKEL MYLES FAMILY**
Verner, William Earl, Olivia, Rosie Mae, Haskel, Raymond, Ralph, Daniel, Leonard, Vernell, Elaine, William, Ruby and Wayne
- 52 **THE JAMES W MYLES FAMILY**
- 54 **THE BOOKER T. MYLES FAMILY**
- 56 **THE MARY MYLES FAMILY**
Ina, Curtis, Mary Ellen, Florist, Alberta, Lee Ester, Mamie, David, Wilma, Michael, Bobby and Robby
- 108 **THE MARK MYLES FAMILY**
Joe Cephas, Patricia, Joyce, Ivory, Willie Doris, Gwendolyn, Mark, Mary, John, Luke, Opal and Mattheze
- 157 **THE GEORGIA CARTER FAMILY**
Ruth and Randolph Emmanuel

NETTIE CARTER - *Family Group Sheet*

Nettie Carter

Birth: 1882 in Mississippi
 Death: 1963 in Mississippi
 Other Spouses: Henry Wallace
 Parents: Emanuel Carter & Elmira Sessem



David Myles

Birth: 1886 in Mississippi
 Death: 5 AUG 1956 in Mississippi
 Other Spouses:
 Parents:



Marriage:

CHILDREN	SEX	BIRTH	SPOUSE	MARRIAGE	DEATH
Haskel Myles	M	7 JUL 1913 in Tate County, Mississippi	Milry Halley	23 DEC 1943 in Tate County, Mississippi	22 AUG 1995 in Chicago
James W Myles	M	1915 in Mississippi			Mississippi
Booker T. Myles	M	1917 in Mississippi			Mississippi
Mary Myles	F	13 JAN 1918 in Mississippi	A. G. Newson	Mississippi	25 JUL 2006 in Mississippi
Mark Myles	M	13 JAN 1918 in Mississippi	Opear Caulley	4 JUL 1953 in Grenada, Mississippi	10 FEB 1998 in Chicago

Descendants of:
NETTIE CARTER



Nettie CARTER
B: 1882 Mississippi
D: 1963 Mississippi



David MYLES
B: 1886 Mississippi
D: 5 AUG 1956 Mississippi



Henry WALLACE
B: 1880 Mississippi

CHILDREN



Haskel MYLES
B: 7 JUL 1913
D: 22 AUG 1995



James W
MYLES
B: 1915



Booker T.
MYLES
B: 1917



Mary MYLES
B: 13 JAN 1918
D: 25 JUL 2006



Mark MYLES
B: 13 JAN 1918
D: 10 FEB 1998



THE HASKEL MYLES FAMILY

Established

23 DEC 1943

HASKEL MYLES - *Individual Timeline*



7 JUL 1913, Birth
Tate County, Mississippi

Haskel Myles was born on 7 JUL 1913 in Tate County, Mississippi, and died on 22 AUG 1995 in Chicago. He is the son of David Myles and Nettie Carter. He married Milry Halley on 23 DEC 1943 in Tate County, Mississippi. She was born on 12 JUL 1922 in Tate County, Mississippi, and died on 20 NOV 2003 in Chicago.

23 DEC 1943, Marriage
Tate County, Mississippi

22 AUG 1995, Death
Chicago

1860 1875 1890 1905 1920 1935 1950 1965 1980 1995 2010 2025 2040 2055

*Gold rush in
Australia*

*Cuba fights Spain
for independence*

*Howard Hughes
designs Spruce
Goose*

Famine in Ethiopia

FAMILY *Branches*



HASKEL MYLES - *Family Group Sheet*

Haskel Myles

Birth: 7 JUL 1913 in Tate County, Mississippi
 Death: 22 AUG 1995 in Chicago
 Other Spouses:
 Parents: David Myles & Nettie Carter



Milry Halley

Birth: 12 JUL 1922 in Tate County, Mississippi
 Death: 20 NOV 2003 in Chicago
 Other Spouses:
 Parents:



Marriage: 23 DEC 1943 in Tate County, Mississippi

CHILDREN	SEX	BIRTH	SPOUSE	MARRIAGE	DEATH
Verner Myles	M	1934 in Coldwater, Mississippi			21 MAR 2000 in St. Louis, Mo.
William Earl Myles	M	1944 in Tate County, Mississippi			1944 in Mississippi
Olivia Myles	F	1945 in Tate County, Mississippi			1945 in Mississippi
Rosie Mae Myles	F	1947 in Independence, Mississippi	Lloyd Allen		
Haskel Myles Jr.	M	1948 in Tate County, Mississippi			1948 in Mississippi
Raymond Myles	M	1950 in Thyatira, Mississippi			10 APR 2017 in Chicago, Illinois
Ralph Myles	M	1951 in Thyatira, Mississippi			
Daniel Myles	M	1953 in Thyatira, Mississippi			
Leonard Myles	M	1954 in Chicago, Illinois			
Vernell Myles	F	1955 in Chicago, Illinois	Carlos Tibbs		
Elaine Myles	F	1956 in Chicago, Illinois			
William Myles	M	1958 in Chicago, Illinois			
Ruby Myles	F	1959 in Chicago, Illinois	Tyrone Powell		
Wayne Myles	M	1962 in Chicago, Illinois	Barbara Anderson		

Descendants of:
HASKEL and MILRY HALLEY



Haskel MYLES

B: 7 JUL 1913 Tate County, Mississippi
D: 22 AUG 1995 Chicago

Milry HALLEY

B: 12 JUL 1922 Tate County, Mississippi
M: 23 DEC 1943 Tate County, Mississippi
D: 20 NOV 2003 Chicago

CHILDREN



Verner MYLES
B: 1 OCT 1934
D: 21 MAR 2000



William Earl
MYLES
B: 1944
D: 1944



Olivia MYLES
B: 1945
D: 1945



Rosie Mae
MYLES
B: 1947



Haskel MYLES
B: 1948
D: 1948



Raymond
MYLES
B: 13 OCT 1950
D: 10 APR 2017



Ralph MYLES
B: 1951



Daniel MYLES
B: 1951



Leonard
MYLES
B: 1954



Vernell MYLES
B: 1955



Elaine MYLES
B: 1956



William
MYLES
B: 1958



Ruby MYLES
B: 1959



Wayne MYLES
B: 1962



THE VERNER MYLES FAMILY

Established

VERNER MYLES - *Individual Timeline*



Verner Myles was born on 1 OCT 1934 in Coldwater, Mississippi, and died on 21 MAR 2000 in St. Louis, Mo.. He is the son of Haskel Myles and Milry Halley.

1 OCT 1934, Birth
Coldwater, Mississippi

21 MAR 2000, Death
St. Louis, Mo.

1900 1910 1920 1930 1940 1950 1960 1970 1980 1990 2000 2010 2020 2030

*Cuba fights Spain
for independence*

*Scopes arrested for
teaching evolution*

*McDonald's
founded*

Famine in Ethiopia

Family of **VERNER**



Verner MYLES
B: 1 OCT 1934
D: 21 MAR 2000



Cynthia MYLES



Tyrone MYLES



Darnell MYLES



Errol MYLES



Robert MYLES



THE WILLIAM EARL MYLES FAMILY

Established

WILLIAM EARL MYLES - *Individual Timeline*



William Earl Myles was born in 1944 in Tate County, Mississippi, and died in 1944 in Mississippi. He is the son of Haskel Myles and Milry Halley.

1944, Death
Mississippi

1944, Birth
Tate County, Mississippi

1941 1942 1943 1944 1945 1946 1947 1948 1949 1950 1951 1952 1953 1954

U.S. enters WWII

Allied invasion of France (D-Day)

Dead Sea Scrolls found

Korean War begins

Hillary climbs Mt. Everest

Family of **WILLIAM EARL**



William Earl MYLES

B: 1944

D: 1944



THE OLIVIA MYLES FAMILY

Established

OLIVIA MYLES - *Individual Timeline*



Olivia Myles was born in 1945 in Tate County, Mississippi, and died in 1945 in Mississippi. She is the daughter of Haskel Myles and Milry Halley.

1945, Death
Mississippi

1945, Birth
Tate County, Mississippi

1942 1943 1944 1945 1946 1947 1948 1949 1950 1951 1952 1953 1954 1955

*Howard Hughes
designs Spruce
Goose*

*United Nations
formed*

*Apartheid in South
Africa*

Family of **OLIVIA**



Olivia MYLES
B: 1945
D: 1945



THE ROSIE MAE MYLES FAMILY

Established

ROSIE MAE MYLES - *Individual Timeline*



1947, Birth
Independence, Mississippi

Rosie Mae Myles was born on 1947 in Independence, Mississippi. She is the daughter of Haskel Myles and Milry Halley.

1944 1945 1946 1947 1948 1949 1950 1951 1952 1953 1954 1955 1956 1957

Allied invasion of France (D-Day)

Dead Sea Scrolls found

Korean War begins

Hillary climbs Mt. Everest

Hungarian Revolution

Family of **ROSIE MAE**



Rosie Mae MYLES
B: 1947

Lloyd ALLEN



Tracey ALLEN
Terrell DUPARD



Trinity
DUPARD



Kimberley ALLEN
George MCGILL



George MCGILL



THE HASKEL MYLES FAMILY

Established

HASKEL MYLES - *Individual Timeline*



Haskel Myles was born in 1948 in Tate County, Mississippi, and died in 1948 in Mississippi. He is the son of Haskel Myles and Milry Halley.

1948, Death
Mississippi

1948, Birth
Tate County, Mississippi

1945 1946 1947 1948 1949 1950 1951 1952 1953 1954 1955 1956 1957 1958

*United Nations
formed*

*Apartheid in South
Africa*

*Soviet Union
launches Sputnik*

Family of **HASKEL**



Haskel MYLES
B: 1948
D: 1948



THE RAYMOND MYLES FAMILY

Established

RAYMOND MYLES - *Individual Timeline*



Raymond Myles was born on 15 OCT 1950 in Thyatira, Mississippi, and died on 10 APR 2017 in Chicago, Illinois. He is the son of Haskel Myles and Milry Halley.

15 OCT 1950, Birth
Thyatira, Mississippi

10 APR 2017, Death
Chicago, Illinois

1920 1930 1940 1950 1960 1970 1980 1990 2000 2010 2020 2030 2040 2050

Einstein's "Theory of Relativity"

Allied invasion of France (D-Day)

World population reaches 3.7 billion

Euro debuts in European Union

Family of **RAYMOND**



Raymond MYLES
B: 15 OCT 1950
D: 10 APR 2017



Desiree MYLES



Imia MYLES



Dakota MYLES



Zyir MYLES



Raymond MYLES



THE RALPH MYLES FAMILY

Established

RALPH MYLES - *Individual Timeline*



Ralph Myles was born on 1951 in Thyatira, Mississippi. He is the son of Haskel Myles and Milry Halley.

1951, Birth
Thyatira, Mississippi

1948 1949 1950 1951 1952 1953 1954 1955 1956 1957 1958 1959 1960 1961

*Apartheid in South
Africa*

*Soviet Union
launches Sputnik*

Family of **RALPH**



Ralph MYLES
B: 1951



Alicia MYLES



Sherrick JONES



Caleb JONES



THE DANIEL MYLES FAMILY

Established

DANIEL MYLES - *Individual Timeline*



Daniel Myles was born on 1953 in Thyatira, Mississippi. He is the son of Haskel Myles and Milry Halley.

1953, Birth
Thyatira, Mississippi

1950 1951 1952 1953 1954 1955 1956 1957 1958 1959 1960 1961 1962 1963

Korean War begins

Hillary climbs Mt. Everest

Hungarian Revolution

Castro becomes dictator of Cuba

Constein's The Living Sea

Family of DANIEL



Daniel MYLES
B: 1953



Monique MYLES



THE LEONARD MYLES FAMILY

Established

LEONARD MYLES - *Individual Timeline*



Leonard Myles was born on 1954 in Chicago, Illinois. He is the son of Haskel Myles and Milry Halley.

1954, Birth
Chicago, Illinois



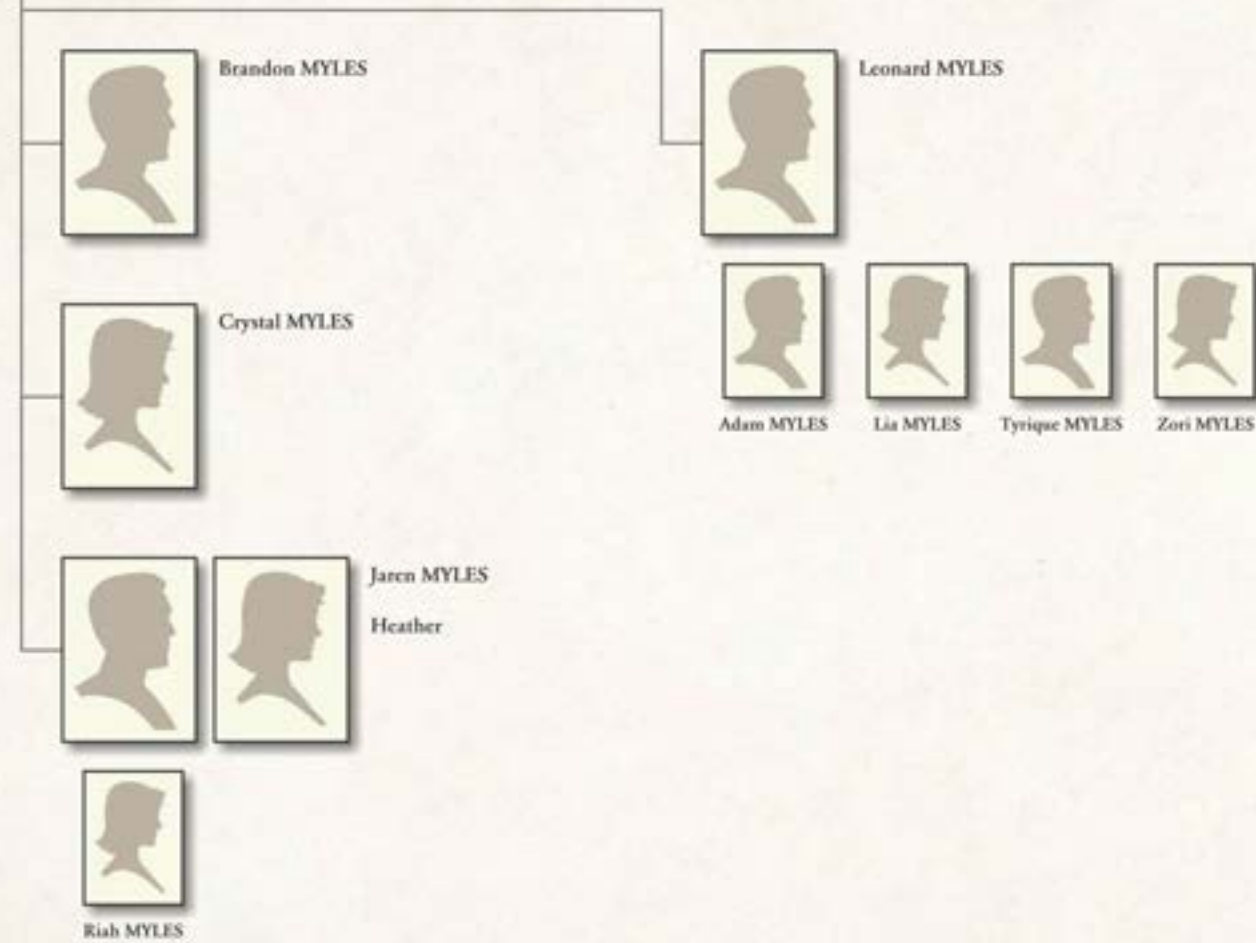
*Soviet Union
launches Sputnik*

*Beatles dominate
England's music
charts*

Family of **LEONARD**



Leonard MYLES
B: 1954





THE VERNELL MYLES FAMILY

Established

VERNELL MYLES - *Individual Timeline*



1955, Birth
Chicago, Illinois

Vernell Myles was born on 1955 in Chicago, Illinois. She is the daughter of Haskel Myles and Milry Halley.

1952 1953 1954 1955 1956 1957 1958 1959 1960 1961 1962 1963 1964 1965

*Queen Elizabeth
begins reign*

*McDonald's
founded*

*Peace Corps
founded*

Family of **VERNELL**



Vernell MYLES
B: 1955

Carlos TIBBS



Tamika TIBBS



Carlos TIBBS



Natalie TIBBS
Philip KELLY



Carlos TIBBS



Brittany KELLY



Briana KELLY



THE ELAINE MYLES FAMILY

Established

ELAINE MYLES - *Individual Timeline*



Elaine Myles was born on 1956 in Chicago, Illinois. She is the daughter of Haskel Myles and Milry Halley.

1956, Birth
Chicago, Illinois

1953 1954 1955 1956 1957 1958 1959 1960 1961 1962 1963 1964 1965 1966

*Hillary climbs Mt.
Everest*

*Hungarian
Revolution*

*Castro becomes
dictator of Cuba*

*Cousteau's The
Living Sea*

*American troops
arrive in Vietnam*

Family of **ELAINE**



Elaine MYLES
B: 1956



Iman HINTON



Myles HINTON



Tony HINTON



THE WILLIAM MYLES FAMILY

Established

WILLIAM MYLES - *Individual Timeline*



1958, Birth
Chicago, Illinois

William Myles was born on 1958 in Chicago, Illinois. He is the son of Haskel Myles and Milry Halley.

1955 1956 1957 1958 1959 1960 1961 1962 1963 1964 1965 1966 1967 1968

*McDonald's
founded*

*Peace Corps
founded*

Family of **WILLIAM**



William MYLES
B: 1958



Ariel MYLES



William MYLES



THE RUBY MYLES FAMILY

Established

RUBY MYLES - *Individual Timeline*



Ruby Myles was born on 1959 in Chicago, Illinois. She is the daughter of Haskel Myles and Milry Halley.

1959, Birth
Chicago, Illinois

1956 1957 1958 1959 1960 1961 1962 1963 1964 1965 1966 1967 1968 1969

*Hungarian
Revolution*

*Castro becomes
dictator of Cuba*

*Cousteau's *The
Living Sea**

*American troops
arrive in Vietnam*

*Skull of 28-million-
year-old ape
discovered*

Family of **RUBY**



Ruby MYLES
B: 1959

Tyrone POWELL



Karma POWELL



Ebony MILTON



Carlton HORTON



Tytianna POWELL



Imani
HORTON



Ethan
HORTON



Carlton
HORTON



Frank POWELL



Derrick MILTON



THE WAYNE MYLES FAMILY

Established

WAYNE MYLES - *Individual Timeline*



1962, Birth
Chicago, Illinois

Wayne Myles was born on 1962 in Chicago, Illinois. He is the son of Haskel Myles and Milry Halley.

1959 1960 1961 1962 1963 1964 1965 1966 1967 1968 1969 1970 1971 1972

*Castro becomes
dictator of Cuba*

*Cousteau's *The
Living Sea**

*American troops
arrive in Vietnam*

*Skull of 28-million-
year-old ape
discovered*

Family of **WAYNE**



Wayne MYLES
B: 1962

Barbara ANDERSON



Melissa MYLES



Mykiah MYLES



Wayne MYLES



Candace ANDERSON



Faithyn
CLAYTON



Faith ANDERSON



Anthony BULLOCK
M:



Zaki BULLOCK



Yuseba
BULLOCK



THE JAMES W MYLES FAMILY

Established

JAMES W MYLES - *Individual Timeline*



1915, Birth
Mississippi

James W Myles was born in 1915 in Mississippi, and died in Mississippi. He is the son of David Myles and Nettie Carter.

1912 1913 1914 1915 1916 1917 1918 1919 1920 1921 1922 1923 1924 1925

Titanic sinks

Einstein's "Theory of Relativity"

Influenza epidemic



THE BOOKER T. MYLES FAMILY

Established

BOOKER T. MYLES - *Individual Timeline*



1917, Birth
Mississippi

Booker T. Myles was born in 1917 in Mississippi, and died in Mississippi. He is the son of David Myles and Nettie Carter.

1914 1915 1916 1917 1918 1919 1920 1921 1922 1923 1924 1925 1926 1927

*Germany declares
war*

Russian Revolution

*Pancho Villa
surrenders*

*Japanese earthquake
destroys half of
Tokyo*

*Milne publishes
Winnie-the-Pooh*



THE MARY MYLES FAMILY

Established

MARY MYLES - *Individual Timeline*



Mary Myles was born on 13 JAN 1918 in Mississippi, and died on 25 JUL 2006 in Mississippi. She is the daughter of David Myles and Nettie Carter.

13 JAN 1918, Birth
Mississippi

25 JUL 2006, Death
Mississippi

1860 1875 1890 1905 1920 1935 1950 1965 1980 1995 2010 2025 2040 2055

Verdi's La Traviata

Spanish-American War

Steinbeck's The Grapes of Wrath

Chernobyl nuclear accident

MARY MYLES - Family Group Sheet

Mary Myles

Birth: 13 JAN 1918 in Mississippi
 Death: 25 JUL 2006 in Mississippi
 Other Spouses:
 Parents: David Myles & Nettie Carter



A. G. Newson

Birth: 1916 in Mississippi
 Death:
 Other Spouses:
 Parents:



Marriage: Mississippi

CHILDREN	SEX	BIRTH	SPOUSE	MARRIAGE	DEATH
Ira Newson	M	1934 in Mississippi	Dora	1960	
Curtis Newson	M	1936 in Mississippi	Lutulea Price	1957 in Mississippi	
Mary Ellen Newson	F	1937 in Mississippi	Kenneth Edison Wooders	3 AUG 1959	
Florist Newson	M	1938 in Mississippi	Elizabeth Wooten	19 JAN 1960 in Chicago, Illinois	
Alberta Newson	F	1941 in Mississippi	L. D. Jones	1961	
Lee Ester Newson	M	1943 in Mississippi	Ormie Cathey Newson	1966	
Mamie Newson	F	1945 in Mississippi	Lent L. Brooks	MAY 1977	
David Newson	M	1948 in Mississippi	Bertha Benford	25 MAY 2009	
Wilma Newson	F	1954 in Mississippi	Thomas Littlefield	20 DEC 1974	
Michael Newson	M	1956 in Mississippi	Fornia M.	24 MAY 1975	
Bobby Newson	M	1958 in Chicago, Illinois	Tellena Collins	15 NOV 1980 in Chicago, Illinois	
Robby Newson	M	1959 in Chicago, Illinois	Rubby Carradine	8 AUG 1998 in Chicago, Illinois	

Descendants of:
MARY and A. G. NEWSON



Mary MYLES
B: 13 JAN 1918 Mississippi
D: 25 JUL 2006 Mississippi



A. G. Newson
B: 1916 Mississippi
M: Mississippi

CHILDREN



Ira NEWSON
B: 1934



Curtis
NEWSON
B: 1936



Mary Ellen
NEWSON
B: 1937



Florist
NEWSON
B: 1938



Alberta
NEWSON
B: 1941



Lee Ester
NEWSON
B: 1943



Mammie
NEWSON
B: 1945



David
NEWSON
B: 1948



Wilma
NEWSON
B: 1954



Michael
NEWSON
B: 1956



Bobby
NEWSON
B: 1958



Robby
NEWSON
B: 1959



THE IRA NEWSON FAMILY

Established

1960

IRA NEWSON - *Individual Timeline*



Ira Newson was born on 1934 in Mississippi. He is the son of A. G. Newson and Mary Myles.

1934, Birth
Mississippi

1960, Marriage

1915 1920 1925 1930 1935 1940 1945 1950 1955 1960 1965 1970 1975 1980

*Schweitzer opens
hospital in French
Congo*

*Fleming discovers
penicillin*

*Howard Hughes
designs Spruce
Goose*

*Hungarian
Revolution*

*MASH television
show premieres*

IRA NEWSON - *Family Group Sheet*

Ira Newson

Birth: 1934 in Mississippi

Death:

Other Spouses:

Parents: A. G. Newson & Mary Myles



Dora

Birth: 1941 in Mississippi

Death:

Other Spouses:

Parents:



Marriage: 1960

CHILDREN	SEX	BIRTH	SPOUSE	MARRIAGE	DEATH
Anthony Newson	M	1959 in Chicago, IL.			
Ira Newson	M	1961 in Chicago, IL.	Karen Morris	29 JUL 1981 in Chicago, IL.	
Tyrone Newson	M	1963 in Chicago, IL.			
Denise Newson	F	1964 in Chicago, IL.			
Maria Newson	F	1975 in Chicago, IL.	Theotis Lockett	1 JUN 1996 in Chicago, IL.	

Family of IRA



Ira NEWSON
B: 1934

Dora
B: 1941
M: 1960



Anthony NEWSON
B: 1959



Maria NEWSON
B: 1975

Theotis LOCKETT
M: 1 JUN 1996



Ira NEWSON
B: 1961

Karen MORRIS
M: 1981



Tyrone NEWSON
B: 1963



Denise NEWSON
B: 1964



THE CURTIS NEWSON FAMILY

Established

1957

CURTIS NEWSON - *Individual Timeline*



1936, Birth
Mississippi

Curtis Newson was born on 1936 in Mississippi. He is the son of A. G. Newson and Mary Myles. He married Lutulea Price in 1957 in Mississippi. She was born on 1937 in Mississippi.

1957, Marriage
Mississippi

1920 1925 1930 1935 1940 1945 1950 1955 1960 1965 1970 1975 1980 1985

Influenza epidemic

*Wide-spread famine
in U.S.S.R.*

*Dead Sea Scrolls
found*

*Peace Corps
founded*

*North and South
Vietnam reunited as
one nation*

CURTIS NEWSON - *Family Group Sheet*

Curtis Newson

Birth: 1936 in Mississippi
 Death:
 Other Spouses:
 Parents: A. G. Newson & Mary Myles



Lutulea Price

Birth: 1937 in Mississippi
 Death:
 Other Spouses:
 Parents:



Marriage: 1957 in Mississippi

CHILDREN	SEX	BIRTH	SPOUSE	MARRIAGE	DEATH
Lori Newson	F	1959 in Chicago, Illinois	Melvin Dent	2 MAY 2012 in Chicago, Illinois	
Sharon Newson	F	1961 in Chicago, Illinois	Steve Dunn	NOV 1985	
Erecka Newson	F	1966 in Chicago, Illinois	William Serrano	NOV 1996	

Family of **CURTIS**



Curtis NEWSON
B: 9 FEB 1936

Lutulea PRICE
B: 12 JUN 1937
M: 1957



Lori NEWSON
B: 1959

Melvin DENT
M: 2012



Sharon NEWSON
B: 1961

Steve DUNN
M: NOV 1985



Erecka NEWSON
B: 1966

William SERRANO
M: NOV 1996



THE MARY ELLEN NEWSON FAMILY

Established

3 AUG 1959

MARY ELLEN NEWSON - *Individual Timeline*



Mary Ellen Newson was born on 1937 in Mississippi. She is the daughter of A. G. Newson and Mary Myles.

1937, Birth
Mississippi

3 AUG 1959, Marriage

1920 1925 1930 1935 1940 1945 1950 1955 1960 1965 1970 1975 1980 1985

Russian Revolution

*Wide-spread famine
in U.S.S.R.*

*Dead Sea Scrolls
found*

*Cousteau's *The
Living Sea**

*North and South
Vietnam reunited as
one nation*

MARY ELLEN NEWSON - *Family Group Sheet*

Mary Ellen Newson

Birth: 1937 in Mississippi

Death:

Other Spouses:

Parents: A. G. Newson & Mary Myles



Kenneth Edison Wooders

Birth: 1933 in Mississippi

Death:

Other Spouses:

Parents:



Marriage: 3 AUG 1959

CHILDREN	SEX	BIRTH	SPOUSE	MARRIAGE	DEATH
Carolyn E. Newson	F	1955 in Mississippi	Matthew E. Shead	12 MAR 1983	
Maurice Newson	M	1957 in Chicago, Illinois			
Marcella A. Wooders	F	1959 in Chicago, Illinois			
Marilyn A. Wooders	F	1961 in Chicago, Illinois	Kerry Roderice Ford	11 JUN 2004	
Kenneth Edison Wooders	M	1962 in Chicago, Illinois			
Rotania Serena Newson	F	1976 in Chicago, Illinois			

Family of **MARY ELLEN**



Mary Ellen NEWSON
B: 1937

Kenneth Edison WOODERS
B: 1933
M: 3 AUG 1959



Carolyn E. NEWSON
B: 1955
Matthew E. SHEAD
M: 12 MAR 1983



Kenneth Edison WOODERS
B: 1962



Maurice NEWSON
B: 1957



Rotania Serena NEWSON
B: 1976



Marcella A. WOODERS
B: 1959



Marilyn A. WOODERS
B: 1961
Kerry Roderice FORD
M: 11 JUN 2004



THE FLORIST NEWSON FAMILY

Established

19 JAN 1960

FLORIST NEWSON - *Individual Timeline*



Florist Newson was born on 1938 in Mississippi. He is the son of A. G. Newson and Mary Myles. He married Elizabeth Wooten on Jan 19, 1960 in Chicago, Illinois. She was born on 1940 in Mississippi.

1938, Birth
Mississippi

19 JAN 1960, Marriage
Chicago, Illinois

1920 1925 1930 1935 1940 1945 1950 1955 1960 1965 1970 1975 1980 1985

Influenza epidemic

*Wide-spread famine
in U.S.S.R.*

*Dead Sea Scrolls
found*

*Peace Corps
founded*

*North and South
Vietnam reunited as
one nation*

FLORIST NEWSON - *Family Group Sheet*

Florist Newson

Birth: 1938 in Mississippi
 Death:
 Other Spouses:
 Parents: A. G. Newson & Mary Myles



Elizabeth Wooten

Birth: 1940 in Mississippi
 Death:
 Other Spouses:
 Parents:



Marriage: 19 JAN 1960 in Chicago, Illinois

CHILDREN	SEX	BIRTH	SPOUSE	MARRIAGE	DEATH
Floyd Newson	M	1960 in Chicago, Illinois	Denise	30 NOV 1991	
Roderick Newson	M	1969 in Chicago, Illinois			
Delahine Newson	F	1972 in Chicago, Illinois	Shelly Jordan	10 JUN 1995	

Family of **FLORIST**



Florist NEWSON

B: 1938

Elizabeth WOOTEN

B: 1940

M: 19 JAN 1960



Floyd NEWSON

B: 1960

Denise

M: 30 NOV 1991



Roderick NEWSON

B: 1969



Delahine NEWSON

B: 1972

Shelly JORDAN

M: 10 JUN 1995



THE ALBERTA NEWSON FAMILY

Established

1961

ALBERTA NEWSON - *Individual Timeline*



Alberta Newson was born on 1941 in Mississippi. She is the daughter of A. G. Newson and Mary Myles.

1941, Birth
Mississippi

1961, Marriage

1925 1930 1935 1940 1945 1950 1955 1960 1965 1970 1975 1980 1985 1990

*Japanese earthquake
destroys half of
Tokyo*

Hindenberg disaster

*Queen Elizabeth
begins reign*

*Baryshnikov makes
professional debut*

*Prince Charles and
Lady Diana
Spencer marry*

ALBERTA NEWSON - *Family Group Sheet*

Alberta Newson

Birth: 1941 in Mississippi
 Death:
 Other Spouses:
 Parents: A. G. Newson & Mary Myles



L. D. Jones

Birth: Mississippi
 Death:
 Other Spouses:
 Parents:



Marriage: 1961

CHILDREN	SEX	BIRTH	SPOUSE	MARRIAGE	DEATH
Oriece Newson	M	1957 in mississippi			
Theresa Newson	F	1959 in Chicago	Jesse Craig Avant	16 JAN 1983	
Melvin Jones	M	1967 in Chicago	Eva A. Terry	31 JUL 1993	

Family of **ALBERTA**



Alberta NEWSON
B: 1941

L. D. JONES
M: 1961



Oriece NEWSON
B: 1957



Theresa NEWSON
B: 1959

Jesse Craig AVANT
M: 16 JAN 1983



Melvin JONES
B: 1967

Eva A. TERRY
B: 1970
M: 31 JUL 1993



THE LEE ESTER NEWSON FAMILY

Established

1966

LEE ESTER NEWSON - *Individual Timeline*



Lee Ester Newson was born on 1943 in Mississippi. He is the son of A. G. Newson and Mary Myles.

1943, Birth
Mississippi

1966, Marriage

1925 1930 1935 1940 1945 1950 1955 1960 1965 1970 1975 1980 1985 1990

*Japanese earthquake
destroys half of
Tokyo*

Hindenberg disaster

*Queen Elizabeth
begins reign*

*Baryshnikov makes
professional debut*

Falklands War

LEE ESTER NEWSON - *Family Group Sheet*

Lee Ester Newson

Birth: 1943 in Mississippi
 Death:
 Other Spouses:
 Parents: A. G. Newson & Mary Myles



Ormie Cathey Newson

Birth: Mississippi
 Death:
 Other Spouses:
 Parents:



Marriage: 1966

CHILDREN	SEX	BIRTH	SPOUSE	MARRIAGE	DEATH
Keesha Newson	F	Chicago, IL			
Samantha Joyce Newson	F	Chicago, IL			
Angela Newson	F	Chicago, IL			
Damon Lee Newson	M	Chicago, IL			

Family of **LEE ESTER**



Lee Ester **NEWSON**
B: 1943

Ormie Cathey
NEWSON
M: 1966



Keesha **NEWSON**



Samantha Joyce **NEWSON**



Angela **NEWSON**



Damon Lee **NEWSON**



THE MAMIE NEWSON FAMILY

Established

MAY 1977

MAMIE NEWSON - *Individual Timeline*



Mamie Newson was born on 1945 in Mississippi. She is the daughter of A. G. Newson and Mary Myles.

1945, Birth
Mississippi

MAY 1977, Marriage

1930 1935 1940 1945 1950 1955 1960 1965 1970 1975 1980 1985 1990 1995

*Fleming discovers
penicillin*

*Howard Hughes
designs Spruce
Goose*

*Soviet Union
launches Sputnik*

*MASH television
show premieres*

*Chernobyl nuclear
accident*

MAMIE NEWSON - *Family Group Sheet*

Mamie Newson

Birth: 1945 in Mississippi
Death:
Other Spouses:
Parents: A. G. Newson & Mary Myles



Lent L. Brooks



Marriage: **MAY 1977**

CHILDREN	SEX	BIRTH	SPOUSE	MARRIAGE	DEATH

Family of MAMIE



Mamie NEWSON
B: 1945

Lent L. BROOKS
M: MAY 1977



THE DAVID NEWSON FAMILY

Established

25 MAY 2009

DAVID NEWSON - *Individual Timeline*



David Newson was born on 1948 in Mississippi. He is the son of A. G. Newson and Mary Myles.

1948, Birth
Mississippi

25 MAY 2009, Marriage

1910 1920 1930 1940 1950 1960 1970 1980 1990 2000 2010 2020 2030 2040

*Gandhi starts
passive resistance*

*Wide-spread famine
in U.S.S.R.*

*American troops
arrive in Vietnam*

*Genocide in
Rwanda*

DAVID NEWSON - *Family Group Sheet*

David Newson

Birth: 1948 in Mississippi
 Death:
 Other Spouses:
 Parents: A. G. Newson & Mary Myles



Bertha Benford

Birth: 1949 in Mississippi
 Death:
 Other Spouses:
 Parents:



Marriage: 25 MAY 2009

CHILDREN	SEX	BIRTH	SPOUSE	MARRIAGE	DEATH
Erwin Tunstall	M	1968 in Chicago	Tiereny	14 FEB 2009	
Kim Teylor	F	1970 in Chicago			
Xavier Russell	M	1971 in Chicago			
David L. Russell	M	1972 in Chicago			
Latonya A. Newson	F	1974 in Chicago	Danta Brassel	19 JUN 2010	
Kimberly Newson	F	1977 in Chicago	Michael Cotton	17 MAY 2003	

Family of **DAVID**



David NEWSON
B: 1948

Bertha BENFORD
B: 1949
M: 25 MAY 2009



Erwin TUNSTALL
B: 1968

Tiereny
B: 1964
M: 14 FEB 2009



Kim TEYLOR
B: 1970



Xavier RUSSELL
B: 1971



David L. RUSSELL
B: 1972



Latonya A. NEWSON
B: 1974

Danta BRASSEL
B: 1974
M: 19 JUN 2010



Kimberly NEWSON
B: 1977

Michael COTTON
M: 17 MAY 2003



THE WILMA NEWSON FAMILY

Established
20 DEC 1974

WILMA NEWSON - *Individual Timeline*



Wilma Newson was born on 1954 in Mississippi. She is the daughter of A. G. Newson and Mary Myles.

1954, Birth
Mississippi

20 DEC 1974, Marriage

1935 1940 1945 1950 1955 1960 1965 1970 1975 1980 1985 1990 1995 2000

*Wide-spread famine
in U.S.S.R.*

*Apartheid in South
Africa*

*Consteau's The
Living Sea*

*Star Wars movie
released*

*Apartheid ends in
South Africa*

WILMA NEWSON - *Family Group Sheet*

Wilma Newson

Birth: 1954 in Mississippi

Death:

Other Spouses:

Parents: A. G. Newson & Mary Myles



Thomas Littlefield



Marriage: 20 DEC 1974

CHILDREN	SEX	BIRTH	SPOUSE	MARRIAGE	DEATH
Selina Littlefield	F	1992 in Chicago, Illinois			

Family of **WILMA**



Wilma NEWSON
B: 1954

Thomas LITTLEFIELD
M: 20 DEC 1974



Selina LITTLEFIELD
B: 1992



THE MICHAEL NEWSON FAMILY

Established

24 MAY 1975

MICHAEL NEWSON - *Individual Timeline*



1956, Birth
Mississippi

Michael Newson was born on 1956 in Mississippi. He is the son of A. G. Newson and Mary Myles.

24 MAY 1975, Marriage

1940 1945 1950 1955 1960 1965 1970 1975 1980 1985 1990 1995 2000 2005

Hindenberg disaster

*Queen Elizabeth
begins reign*

*Prince Charles and
Lady Diana
Spencer marry*

*Scientists clone a
sheep*

MICHAEL NEWSON - *Family Group Sheet*

Michael Newson

Birth: 1956 in Mississippi
 Death:
 Other Spouses:
 Parents: A. G. Newson & Mary Myles



Fornia M.

Birth: 1955 in Mississippi
 Death:
 Other Spouses:
 Parents:



Marriage: 24 MAY 1975

CHILDREN	SEX	BIRTH	SPOUSE	MARRIAGE	DEATH
Latrina Newson	F	1975 in Chicago			
Patricia Newson	F	1980 in Chicago	Ricky Jacox	11 AUG 2001	
Melanie Newson	F	1987 in Chicago	Jimney Brown	5 DEC 2009	

Family of **MICHAEL**



Michael NEWSON
B: 1956

Fornia M.
B: 1955
M: 24 MAY 1975



Latrina NEWSON
B: 1975



Patricia NEWSON
B: 1980

Ricky JACOX
M: 11 AUG 2001



Melanie NEWSON
B: 1987

Jimmey BROWN
M: 5 DEC 2009



THE BOBBY NEWSON FAMILY

Established

15 NOV 1980

BOBBY NEWSON - *Individual Timeline*



Bobby Newson was born on 1958 in Chicago, Illinois. He is the son of A. G. Newson and Mary Myles. He married Tellena Collins on 15 NOV 1980 in Chicago, Illinois. She was born on 1957 in Chicago, Illinois.

1958, Birth
Chicago, Illinois

15 NOV 1980, Marriage
Chicago, Illinois

1940 1945 1950 1955 1960 1965 1970 1975 1980 1985 1990 1995 2000 2005

*Glenn Miller forms
jazz band*

*Hillary climbs Mt.
Everest*

*Prince Charles and
Lady Diana
Spencer marry*

*Scientists clone a
sheep*

BOBBY NEWSON - *Family Group Sheet*

Bobby Newson

Birth: 1958 in Chicago, Illinois
 Death:
 Other Spouses:
 Parents: A. G. Newson & Mary Myles



Tellena Collins

Birth: 1957 in Chicago, Illinois
 Death:
 Other Spouses:
 Parents:



Marriage: 15 NOV 1980 in Chicago, Illinois

CHILDREN	SEX	BIRTH	SPOUSE	MARRIAGE	DEATH
Sheena S. Newson	F	1990 in Chicago, Illinois			

Family of **BOBBY**



Bobby NEWSON
B: 1958

Tellena COLLINS
B: 1957
M: 15 NOV 1980



Sheena S. NEWSON
B: 1990



THE ROBBY NEWSON FAMILY

Established

8 AUG 1998

ROBBY NEWSON - *Individual Timeline*



Robby Newson was born on 1959 in Chicago, Illinois. He is the son of A. G. Newson and Mary Myles. He married Rubby Carradine on 8 AUG 1998 in Chicago, Illinois.

1959, Birth
Chicago, Illinois

8 AUG 1998, Marriage
Chicago, Illinois

1940 1945 1950 1955 1960 1965 1970 1975 1980 1985 1990 1995 2000 2005

Hindenberg disaster

*Queen Elizabeth
begins reign*

Falklands War

*Scientists clone a
sheep*

ROBBY NEWSON - *Family Group Sheet*

Robby Newson

Birth: 1959 in Chicago, Illinois
 Death:
 Other Spouses:
 Parents: A. G. Newson & Mary Myles



Rubby Carradine



Marriage: 8 AUG 1998 in Chicago, Illinois

CHILDREN	SEX	BIRTH	SPOUSE	MARRIAGE	DEATH
Regina Wright	F	1980 in Chicago, Illinois	Dion Smith	15 MAY 2015 in Chicago, Illinois	

Family of **ROBBY**



Robby NEWSON
B: 1959

Rubby CARRADINE
M: 8 AUG 1998



Regina WRIGHT
B: 1980

Dion SMITH
M: 15 MAY 2015



THE MARK MYLES FAMILY

Established

4 JUL 1953

MARK MYLES - *Individual Timeline*



Mark Myles was born on 13 JAN 1918 in Mississippi, and died on 10 FEB 1998 in Chicago. He is the son of David Myles and Nettie Carter. He married Opear Caulley on 4 JUL 1953 in Grenada, Mississippi. She was born on 25 OCT 1928 in Grenada, Mississippi.

13 JAN 1918, Birth
Mississippi

4 JUL 1953, Marriage
Grenada, Mississippi

10 FEB 1998, Death
Chicago

1880 1890 1900 1910 1920 1930 1940 1950 1960 1970 1980 1990 2000 2010

Famine in India

*Gandhi starts
passive resistance*

*Wide-spread famine
in U.S.S.R.*

*American troops
arrive in Vietnam*

*World Trade Center
bombed*

FAMILY *Branches*



MARK MYLES - *Family Group Sheet*

Mark Myles

Birth: 13 JAN 1918 in Mississippi
 Death: 10 FEB 1998 in Chicago
 Other Spouses:
 Parents: David Myles & Nettie Carter



Opear Caulley

Birth: 1928 in Grenada, Mississippi
 Death:
 Other Spouses:
 Parents:



Marriage: 4 JUL 1953 in Grenada, Mississippi

CHILDREN	SEX	BIRTH	SPOUSE	MARRIAGE	DEATH
Joe Cephas Myles	M	1942 in Mississippi			Ohio
Patricia Myles	F	1949 in Chicago	William Bibbs		23 AUG 2009 in Chicago
Joyce Myles	F	1954 in Chicago	Jerome Donald	7 JAN 1980 in Chicago	
Ivory Myles	F	1955 in Chicago			3 JUL 1955 in Chicago
Willie Doris Myles	F	1957 in Chicago	John Thomas	4 JUL 1979 in Chicago	
Gwendoyln Myles	F	1959 in Chicago	Leroy Cox	Chicago	
Mark Myles	M	1960 in Chicago			
Mary Myles	F	1960 in Chicago	Richard Dent	Chicago	15 MAR 2011 in Chicago
John Myles	M	1962 in Chicago			AUG 1969 in Chicago
Luke Myles	M	1965 in Chicago	Kimberly Anderson	21 APR 1990 in Chicago	
Opal Myles	F	1967 in Chicago	Randall Johnson	Chicago	
Matthew Myles	M	1968 in Chicago			

Descendants of:
MARK and OPEAR CAULLEY



Mark MYLES **Opear CAULLEY**
 B: 13 JAN 1918 Mississippi B: 1928 Grenada, Mississippi
 D: 10 FEB 1998 Chicago M: 4 JUL 1953 Grenada, Mississippi

CHILDREN



**Joe Cephus
 MYLES**
 B: 1942



Patricia MYLES
 B: 1949
 D: 21 AUG 2009



Joyce MYLES
 B: 1954



Ivory MYLES
 B: 1953
 D: 3 JUL 1953



**Willie Doris
 MYLES**
 B: 1957



**Gwendolyn
 MYLES**
 B: 1959



Mark MYLES
 B: 1960



Mary MYLES
 B: 1960
 D: 15 MAR 2011



John MYLES
 B: 1962
 D: AUG 1968



Luke MYLES
 B: 1965



Opal MYLES
 B: 1967



**Matthew
 MYLES**
 B: 1968



THE JOE CEPHAS MYLES FAMILY

Established

Family of **JOE CEPHAS**



Joe Cephas MYLES
B: 1942



THE PATRICIA MYLES FAMILY

Established

PATRICIA MYLES - *Individual Timeline*



Patricia Myles was born on 1949 in Chicago, and died on 23 AUG 2009 in Chicago. She is the daughter of Mark Myles and Opear Caulley.

1949, Birth
Chicago

23 AUG 2009, Death
Chicago

1910 1920 1930 1940 1950 1960 1970 1980 1990 2000 2010 2020 2030 2040

*Gandhi starts
passive resistance*

*Persia renamed
Iran*

*American troops
arrive in Vietnam*

*Genocide in
Rwanda*

PATRICIA MYLES - *Family Group Sheet*

Patricia Myles

Birth: 1949 in Chicago
 Death: 23 AUG 2009 in Chicago
 Other Spouses:
 Parents: Mark Myles & Opear Caulley



William Bibbs

Birth: 1949 in Mississippi
 Death: JUN 1993 in Chicago
 Other Spouses:
 Parents:



Marriage:

CHILDREN	SEX	BIRTH	SPOUSE	MARRIAGE	DEATH
Yolanda Myles	F	1967 in Chicago			
William Maurice Bibbs	M	1984 in Chicago			

Family of **PATRICIA**



Patricia MYLES

B: 1949

D: 23 AUG 2009

William BIBBS

B: 1949

D: JUN 1993



Yolanda MYLES

B: 1967



William Maurice BIBBS

B: 1984



THE JOYCE MYLES FAMILY

Established

7 JAN 1980

JOYCE MYLES - *Individual Timeline*



1954, Birth
Chicago

Joyce Myles was born on 1954 in Chicago. She is the daughter of Mark Myles and Opear Caulley. She married Jerome Donald on 7 JAN 1980 in Chicago. He was born on 16 FEB 1956 in Chicago, and died on 31 MAR 2014 in Chicago, Illinois.

7 JAN 1980, Marriage
Chicago

1935 1940 1945 1950 1955 1960 1965 1970 1975 1980 1985 1990 1995 2000

*Wide-spread famine
in U.S.S.R.*

*Dead Sea Scrolls
found*

*Cousteau's The
Living Sea*

*North and South
Vietnam reunited
as one nation*

*Apartheid ends in
South Africa*

FAMILY *Branches*



JOYCE MYLES - *Family Group Sheet*

Joyce Myles

Birth: 1954 in Chicago
 Death:
 Other Spouses:
 Parents: Mark Myles & Opear Caulley



Jerome Donald

Birth: 16 FEB 1956 in Chicago
 Death: 31 MAR 2014 in Chicago, Illinois
 Other Spouses:
 Parents:



Marriage: 7 JAN 1980 in Chicago

CHILDREN	SEX	BIRTH	SPOUSE	MARRIAGE	DEATH
Jerome Donald	M	1980 in Chicago			
Joy Donald	F	1983 in Chicago	Donald Coats	Chicago	

Family of **JOYCE**



Joyce MYLES
B: 1954



Jerome DONALD
B: 16 FEB 1956
M: 7 JAN 1980
D: 31 MAR 2014



Jerome DONALD
B: 1980



Jerome Trevon DONALD
B: 1997



Jeron DONALD
B: 2001



Jaelyn DONALD
B: 2010



Joy DONALD
B: 1983



Donald COATS
B: 1981
M:



Donald COATS
B: 2003



Donavin COATS
B: 2007



Donale COATS
B: 2011



THE IVORY MYLES FAMILY

Established

IVORY MYLES - *Individual Timeline*



Ivory Myles was born on 1955 in Chicago, and died on 3 JUL 1955 in Chicago. She is the daughter of Mark Myles and Opear Caulley.

1955, Birth
Chicago

3 JUL 1955, Death
Chicago

1952 1953 1954 1955 1956 1957 1958 1959 1960 1961 1962 1963 1964 1965

*Queen Elizabeth
begins reign*

*McDonald's
founded*

*Peace Corps
founded*

Family of **IVORY**



Ivory MYLES
B: 1955
D: 3 JUL 1955



THE WILLIE DORIS MYLES FAMILY

Established

4 JUL 1979

WILLIE DORIS MYLES - *Individual Timeline*



Willie Doris Myles was born on 1957 in Chicago. She is the daughter of Mark Myles and Opear Caulley. She married John Thomas on 4 JUL 1979 in Chicago. He was born on 20 FEB 1956 in Chicago.

1957, Birth
Chicago

4 JUL 1979, Marriage
Chicago

1940 1945 1950 1955 1960 1965 1970 1975 1980 1985 1990 1995 2000 2005

*Glenn Miller forms
jazz band*

*Queen Elizabeth
begins reign*

Falklands War

*Scientists clone a
sheep*

FAMILY *Branches*



WILLIE DORIS MYLES - *Family Group Sheet*

Willie Doris Myles

Birth: 1957 in Chicago
 Death:
 Other Spouses:
 Parents: Mark Myles & Opear Caulley



John Thomas

Birth: 1956 in Chicago
 Death:
 Other Spouses:
 Parents:



Marriage: 4 JUL 1979 in Chicago

CHILDREN	SEX	BIRTH	SPOUSE	MARRIAGE	DEATH
Dorthea Thomas	F	1980 in Chicago	Maurice Miles	1 JUN 2002 in Chicago	
Dornita Thomas	F	1982 in Chicago	Ronell Jacob	4 FEB 2010 in Chicago	

Family of **WILLIE DORIS**



Willie Doris MYLES

B: 1957

John THOMAS

B: 1956

M: 4 JUL 1979



Dorthea THOMAS

B: 1980



Maurice MILES

B: 1979

M: 1 JUN 2002



Dornita THOMAS

B: 1982



Ronell JACOB

B: 1981

M: 4 FEB 2010



Denae MILES

B: 2001



Demauria MILES

B: 2003



Maurice MILES

B: 2008



Denia JACOB

B: 2002



Denyha JACOB

B: 2006



Denell JACOB

B: 2008



Denajiah JACOB

B: 2009



Deanna JACOB

B: 2014



Ronell JACOB

B: 2016



THE GWENDOYLN MYLES FAMILY

Established

GWENDOYLN MYLES - *Individual Timeline*



1959, Birth
Chicago

Gwendoyln Myles was born on 1959 in Chicago. She is the daughter of Mark Myles and Opear Caulley.

1956 1957 1958 1959 1960 1961 1962 1963 1964 1965 1966 1967 1968 1969

*Hungarian
Revolution*

*Castro becomes
dictator of Cuba*

*Cousteau's The
Living Sea*

*American troops
arrive in Vietnam*

*Skull of 28-million-
year-old ape
discovered*

GWENDOYLN MYLES - *Family Group Sheet*

Gwendoyln Myles

Birth: 1959 in Chicago
 Death:
 Other Spouses:
 Parents: Mark Myles & Opear Caulley



Leroy Cox

Birth: Chicago
 Death:
 Other Spouses:
 Parents:



Marriage: Chicago

CHILDREN	SEX	BIRTH	SPOUSE	MARRIAGE	DEATH
Kisha Myles	F	1978 in Chicago	Roy Montgomery	10 APR 2002 in Chicago	
Priscilla Cox	F	1989 in Chicago			
Leroy Cox	M	1993 in Chicago			

Family of **GWENDOYLN**



Gwendoyln MYLES
B: 1959

Leroy COX
M:



Kisha MYLES
B: 1978

Roy MONTGOMERY
B: 1978
M: 10 APR 2002



Leroy COX
B: 1993



Roy
MONTGOMERY
B: 2003



Caleb
MONTGOMERY
B: 2006



Reagan
MONTGOMERY
B: 2008



Priscilla COX
B: 1989



Amari Gabby
COX
B: 31 JUL 2013



THE MARK MYLES FAMILY

Established

MARK MYLES - *Individual Timeline*



1960, Birth
Chicago

Mark Myles was born on 1960 in Chicago. He is the son of Mark Myles and Opear Caulley.

1957 1958 1959 1960 1961 1962 1963 1964 1965 1966 1967 1968 1969 1970

*Soviet Union
launches Sputnik*

*Beatles dominate
England's music
charts*

*Baryshnikov makes
professional debut*

*Sesame Street first
airs*

Family of **MARK**



Mark MYLES
B: 1960



Mark MYLES



Shalonda MYLES



Kiera MYLES
B: 1987



Andre ROSE



Zamir ROSE



Mason ROSE



THE MARY MYLES FAMILY

Established

MARY MYLES - *Individual Timeline*



Mary Myles was born on 1960 in Chicago, and died on 15 MAR 2011 in Chicago. She is the daughter of Mark Myles and Opear Caulley.

1960, Birth
Chicago

15 MAR 2011, Death
Chicago

1930 1940 1950 1960 1970 1980 1990 2000 2010 2020 2030 2040 2050 2060

*Milne publishes
Winnie-the-Poob*

*Hillary climbs Mt.
Everest*

Famine in Ethiopia

MARY MYLES - *Family Group Sheet*

Mary Myles

Birth: 1960 in Chicago
 Death: 15 MAR 2011 in Chicago
 Other Spouses:
 Parents: Mark Myles & Opear Caulley



Richard Dent



Marriage: Chicago

CHILDREN	SEX	BIRTH	SPOUSE	MARRIAGE	DEATH
Lashawn Bennett	M	1983 in Chicago	Karena Beasley	15 OCT 2017 in Chicago	
Shenika Dent	F	1993 in Chicago			
Richard Dent	M	1997 in Chicago			

Family of **MARY**



Mary MYLES
B: 1960
D: 15 MAR 2011

Richard DENT
M:



Lashawn BENNETT
B: 1983

Karena BEASLEY
M: 15 OCT 2017



Shenika DENT
B: 1993



Richard DENT
B: 1997



THE JOHN MYLES FAMILY

Established

JOHN MYLES - *Individual Timeline*



John Myles was born on 1962 in Chicago, and died in AUG 1969 in Chicago. He is the son of Mark Myles and Opear Caulley.

1962, Birth
Chicago

AUG 1969, Death
Chicago

1959 1960 1961 1962 1963 1964 1965 1966 1967 1968 1969 1970 1971 1972

*Castro becomes
dictator of Cuba*

*Cousteau's *The
Living Sea**

*American troops
arrive in Vietnam*

*Skull of 28-million-
year-old ape
discovered*

Family of **JOHN**



John MYLES
B: 1962
D: AUG 1969



THE LUKE MYLES FAMILY

Established
21 APR 1990

LUKE MYLES - *Individual Timeline*



Luke Myles was born on 1965 in Chicago. He is the son of Mark Myles and Opear Caulley. He married Kimberly Anderson on 21 APR 1990 in Chicago. She was born on 1966 in Chicago.

1965, Birth
Chicago

21 APR 1990, Marriage
Chicago

1950 1955 1960 1965 1970 1975 1980 1985 1990 1995 2000 2005 2010 2015

*Apartheid in South
Africa*

*Beatles dominate
England's music
charts*

*Star Wars movie
released*

The Gulf War

LUKE MYLES - *Family Group Sheet*

Luke Myles

Birth: 1965 in Chicago

Death:

Other Spouses:

Parents: Mark Myles & Opear Caulley



Kimberly Anderson

Birth: 1966 in Chicago

Death:

Other Spouses:

Parents:



Marriage: 21 APR 1990 in Chicago

CHILDREN	SEX	BIRTH	SPOUSE	MARRIAGE	DEATH
Ivory Myles	F	1988 in Chicago			
Luke Myles	M	1990 in Chicago			
Jon Myles	M	1992 in Chicago			
Jeremiah Myles	M	1996 in Chicago			
Issiah Myles	M	1998 in Chicago			

Family of **LUKE**



Luke MYLES Sr.
B: 1965

Kimberly ANDERSON
B: 1966
M: 21 APR 1990



Ivory MYLES
B: 1988



Luke MYLES Jr.
B: 1990



Luke MYLES III
B: 2018



Jon MYLES
B: 1992



Nyiah MYLES
B: 2013



Malachi MYLES
B: 2015



Jeremiah MYLES
B: 1996



Issiah MYLES
B: 1998



THE OPAL MYLES FAMILY

Established

OPAL MYLES - *Individual Timeline*



Opal Myles was born on 1967 in Chicago. She is the daughter of Mark Myles and Opear Caulley.

1967, Birth
Chicago

1964 1965 1966 1967 1968 1969 1970 1971 1972 1973 1974 1975 1976 1977

*Aswan High Dam
completed*

*Kenya bans sale of
ivory*

*North and South
Vietnam reunited as
one nation*

OPAL MYLES - *Family Group Sheet*

Opal Myles

Birth: 1967 in Chicago
 Death:
 Other Spouses:
 Parents: Mark Myles & Opear Caulley



Randall Johnson

Birth: Chicago
 Death:
 Other Spouses:
 Parents:



Marriage: Chicago

CHILDREN	SEX	BIRTH	SPOUSE	MARRIAGE	DEATH
Opreal Johnson	F	1993 in Chicago			
Olivia Johnson	F	1997 in Texas			
Randall Johnson	M	Texas			

Family of **OPAL**



Opal MYLES
B: 1967

Randall JOHNSON
M:



Opreal JOHNSON
B: 1993



Olivia JOHNSON
B: 1997



Randall JOHNSON



THE MATTHEW MYLES FAMILY

Established

MATTHEW MYLES - *Individual Timeline*



Matthew Myles was born on 1968 in Chicago. He is the son of Mark Myles and Opear Caulley.

1968, Birth
Chicago

1965 1966 1967 1968 1969 1970 1971 1972 1973 1974 1975 1976 1977 1978

*American troops
arrive in Vietnam*

*Skull of 28-million-
year-old ape
discovered*

*World population
reaches 3.7 billion*

*Star Wars movie
released*

Family of **MATTHEW**



Matthew MYLES
B: 1968

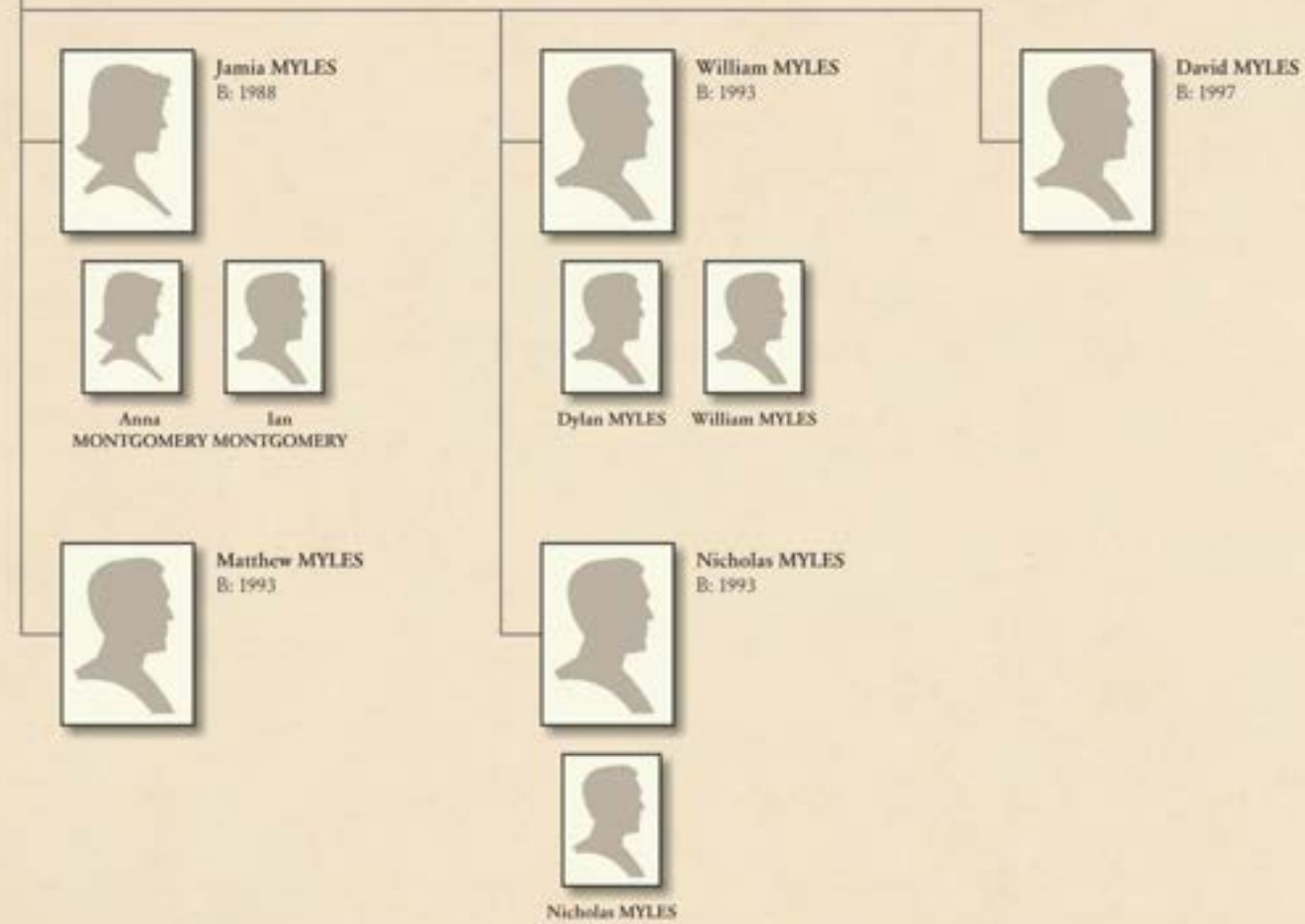
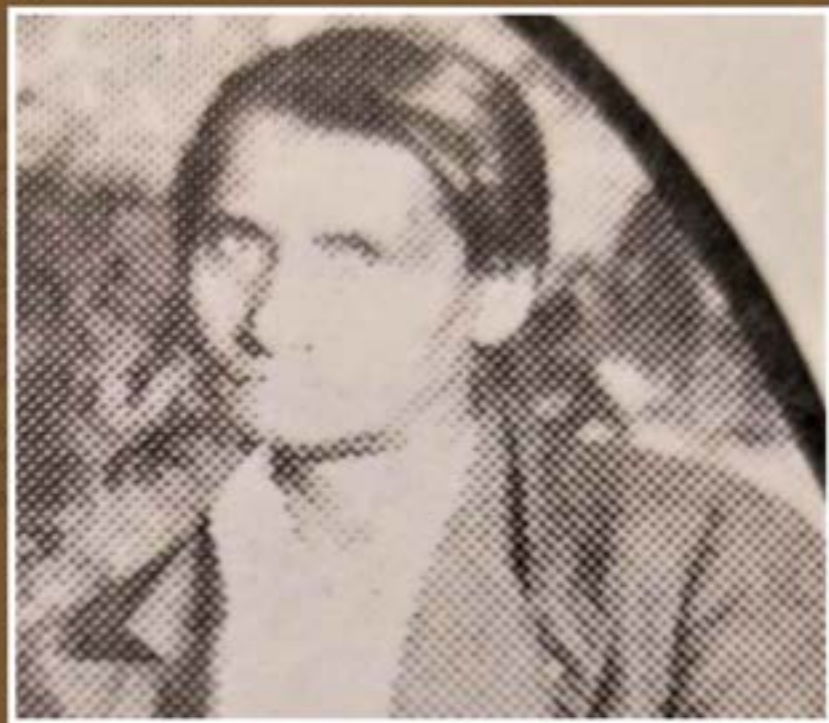


TABLE *of* CONTENTS



THE GEORGIA CARTER FAMILY

157 THE GEORGIA CARTER FAMILY

Ruth and Randolph Emanuel

161 THE RUTH MANNINGS FAMILY

Elyses Marion, Alphonzo, Lillian LaFrances, Robert Arthur, Sharron D., Barbara Joyce, Lovette Eugene, Darrell A., Calvin Becardo, Georgia Ruth, Larry D. and

217 ^{*Geraldine*} THE RANDOLPH EMANUEL MANNINGS FAMILY

Artie Rue, Hazel, Randolph, Lois Louise and Delores

GEORGIA CARTER - *Individual Timeline*



Georgia Carter was born in 1884 in Mississippi, and died in 1959 in Mississippi. She is the daughter of Emanuel Carter and Elmira Sessem.

1884, Birth
Mississippi

1959, Death
Mississippi

1850 1860 1870 1880 1890 1900 1910 1920 1930 1940 1950 1960 1970 1980

*Planet Neptune
discovered*

*Verne's Around the
World in Eighty
Days*

*First baseball World
Series*

*Persia renamed
Iran*

*Beatles dominate
England's music
charts*

GEORGIA CARTER - *Family Group Sheet*

Georgia Carter

Birth: 1884 in Mississippi
 Death: 1959 in Mississippi
 Other Spouses:
 Parents: Emanuel Carter & Elmira Sessem



Marion Lafayette Mannings

Birth: Mississippi
 Death: Mississippi
 Other Spouses:
 Parents:



Marriage:

CHILDREN	SEX	BIRTH	SPOUSE	MARRIAGE	DEATH
Ruth Mannings	F	1912 in Mississippi	Alphonzo Woodard	Mississippi	Mississippi
Randolph Emanuel Mannings	M	1915 in Mississippi	Arlene St. Maria Banks	8 APR 1934 in Mississippi	MAY 1989 in Chicago, Illinois

Descendants of:
GEORGIA and MARION LAFAYETTE MANNINGS



Georgia CARTER
B: 1884 Mississippi
D: 1959 Mississippi



Marion Lafayette MANNINGS

CHILDREN



Ruth
MANNINGS
B: 1912



Randolph
Emanuel
MANNINGS
B: 1913
D: MAY 1989



THE RUTH MANNINGS FAMILY

Established

RUTH MANNINGS - *Individual Timeline*



1912, Birth
Mississippi

Ruth Mannings was born in 1912 in Mississippi, and died in Mississippi. She is the daughter of Marion Lafayette Mannings and Georgia Carter.

1909 1910 1911 1912 1913 1914 1915 1916 1917 1918 1919 1920 1921 1922

*Peary first to reach
North Pole*

Titanic sinks

*Einstein's "Theory
of Relativity"*

Influenza epidemic

RUTH MANNINGS - *Family Group Sheet*

Ruth Mannings

Birth: 1912 in Mississippi
 Death: Mississippi
 Other Spouses:
 Parents: Marion Lafayette Mannings & Georgia Carter



Alphonzo Woodard

Birth: 1911 in Mississippi
 Death:
 Other Spouses:
 Parents:



Marriage: Mississippi

CHILDREN	SEX	BIRTH	SPOUSE	MARRIAGE	DEATH
Elyses Marion Woodard	M	1936 in Mississippi			
Alphonzo Woodard	M	1938 in Mississippi			
Lillian LaFrances Woodard	F	1939 in Mississippi			
Robert Arthur Woodard	M	Mississippi			
Sharon D. Woodard	F	Mississippi	Gregory Green		
Barbara Joyce Woodard	F	Mississippi			
Lovette Eugene Woodard	M	Mississippi			4 DEC 1980 in Memphis, Tennessee
Darrell A. Woodard	M	Mississippi			
Calvin Becardo Woodard	M	Mississippi			
Georgia Ruth Woodard	F	Mississippi			
Larry D. Woodard	M	Mississippi			
Geraldine Woodard	F	Mississippi			

TABLE *Of* CONTENTS



- 161 **THE RUTH MANNINGS WOODARD FAMILY**
Ulysses Marion, Alphonzo, Lillian LaFrances, Geraldine, Barbara Joyce, Georgia Ruth, Lovette Eugene, Saleem (Robert) A., Larry D., Sharon D. and Calvin Ricardo
- 170 **THE ULYSSES MARION WOODARD FAMILY**
Darrell A., Diane, David and Bryant
- 178 **THE ALPHONZO WOODARD FAMILY**
Brandon and Dancen
- 182 **THE LILLIAN LAFRANCES WOODARD BOLDEN FAMILY**
Nancy, Bruce, Denise, Gail, Joseph and Simeon
- 187 **THE GERALDINE WOODARD JAMES FAMILY**
- 189 **THE BARBARA JOYCE WOODARD TURNER FAMILY**
Thomas, Jr., Skye, Elailni, Arnetta Michelle and Eric Theophilis
- 197 **THE GEORGIA RUTH WOODARD WATSON FAMILY**
Marion, W., Terrica, Melissa R. and Melinda G.
- 201 **THE LOVETTE EUGENE WOODARD FAMILY**
- 204 **THE SALEEM (ROBERT) A. EL AMIN (WOODARD) FAMILY**
- 207 **THE LARRY D. WOODARD FAMILY**
- 210 **THE SHARON DIANE WOODARD GREEN FAMILY**



THE RUTH MANNINGS WOODARD FAMILY

Established

1932

Descendants of
RUTH and ALPHONZO WOODARD



Ruth MANNINGS WOODARD
 B: 1911 Mississippi
 D: 5 Oct 2001 Memphis Tenn.

Alphonzo WOODARD
 B: 1909 Tennessee
 M: Mississippi
 D: 04 21 2003 Memphis Tenn.

CHILDREN



Ulysses Marion WOODARD
 B: 16 Jul 1934
 D: Dec 1983



Alphonzo WOODARD
 B: 1936



Lillian LaFrances WOODARD BOLDEN
 B: 1939



Geraldine WOODARD JAMES
 B: 1940



Barbara Joyce WOODARD TURNER
 B: 1942



Georgia Ruth WOODARD WATSON
 B: 1944



Lovette Eugene WOODARD
 B: 17 Nov 1945
 D: 4 DEC 1980



Saleem (Robert) A. EL AMIN (WOODARD)
 B: 1948



Larry Darnell WOODARD
 B: 1950



Sharon Diane WOODARD GREEN
 B: 1951



Calvin Ricardo WOODARD
 B: 1952

RUTH MANNINGS WOODARD - *Individual Timeline*



Ruth Mannings Woodard was born on 10 Oct 1911 in Mississippi, and died on 5 Oct 2001 in Memphis Tenn.. She is the daughter of Marion Lafayette Mannings and Georgia Carter. She married Alphonzo Woodard in 1932 in Mississippi. He was born on 5 Jul 1909 in Tennessee, and died on 04 21 2003 in Memphis Tenn..

1911, Birth
Mississippi

1932, Marriage
Mississippi

5 Oct 2001, Death
Memphis Tenn.

1860 1875 1890 1905 1920 1935 1950 1965 1980 1995 2010 2025 2040 2055

*Gold rush in
Australia*

*Olympic Games
revived*

U.S. enters WWII

*Chernobyl nuclear
accident*

RUTH MANNINGS WOODARD - *Family Group Sheet*

Ruth Mannings Woodard

Birth: 10 Oct 1911 in Mississippi
 Death: 5 Oct 2001 in Memphis Tenn.
 Other Spouses:
 Parents: Marion Lafayette Mannings & Georgia Carter



Alphonzo Woodard

Birth: 5 Jul 1909 in Tennessee
 Death: 04 21 2003 in Memphis Tenn.
 Other Spouses:
 Parents:



Marriage: 1932 in Mississippi

CHILDREN	SEX	BIRTH	SPOUSE	MARRIAGE	DEATH
Ulysses Marion Woodard	M	1935 in Mississippi	Virgie Avery	1968	Dec 1983
Alphonzo Woodard	M	1937 in Mississippi	Cecile Woodard	1966	
Lillian LaFrances Woodard Bolden	F	1939 in Mississippi	James Bolden		
Geraldine Woodard James	F	1940 in Mississippi	Bonnie Ray James	1970	
Barbara Joyce Woodard Turner	F	1942 in Memphis Tenn.	Alfonso Turner		
Georgia Ruth Woodard Watson	F	1944 in Memphis Tenn.	Willie B. Watson	13 Apr 1968	
Lovette Eugene Woodard	M	17 Nov 1945 in Memphis Tennessee			4 DEC 1980 in Los Angeles, California
Saleem (Robert) A. El Amin (Woodard)	M	1948 in Memphis Tenn.			
Larry Darnell Woodard	M	1950 in Memphis Tenn.			
Sharon Diane Woodard Green	F	1951 in Memphis, Tenn.	Gregory Green	30 Jun 1979	
Calvin Ricardo Woodard	M	1953 in Memphis Tenn.			



THE ULYSSES MARION WOODARD FAMILY

Established

1968

ULYSSES MARION WOODARD - *Individual Timeline*



Ulysses Marion Woodard was born on 1935 in Mississippi, and died in Dec 1983. In Chicago, IL. He is the son of Alphonzo Woodard and Ruth Mannings Woodard.

1935, Birth
Mississippi

1968, Marriage

Dec 1983, Death

1900 1910 1920 1930 1940 1950 1960 1970 1980 1990 2000 2010 2020 2030

*Kipling publishes
The Jungle Book*

*Japanese earthquake
destroys half of
Tokyo*

*Hillary climbs Mt.
Everest*

Famine in Ethiopia

ULYSSES MARION WOODARD - *Family Group Sheet*

Ulysses Marion Woodard

Birth: 1935 in Mississippi
 Death: Dec 1983 in Chicago, IL.
 Other Spouses: Virginia Avery
 Parents: Alphonzo Woodard & Ruth Woodard Mannings



Mary Louise White

Birth: 1934
 Death:
 Other Spouses:
 Parents:



Marriage:

CHILDREN	SEX	BIRTH	SPOUSE	MARRIAGE	DEATH
Darrell A. Woodard	M	1967 in Chicago, IL.			

Family of **DARRELL**



Darrell A. WOODARD
B: 1967



Jasmyne WOODARD
B: 1995



Jewel WOODARD
B: 1997



Ulysses WOODARD
B: 1999

ULYSSES MARION WOODARD - *Family Group Sheet*

Ulysses Marion Woodard

Birth: 1935 in Mississippi
 Death: Dec 1983 Chicago, IL
 Other Spouses:
 Parents: Alphonzo Woodard & Ruth Woodard Mannings



Virginia Avery



Marriage: 1968

CHILDREN	SEX	BIRTH	SPOUSE	MARRIAGE	DEATH
Dianne Newberry	F	1956 in Hernando, Miss.			
David Woodard	M	1970 in Chicago, Illinois			
Brian Woodard	M	1971 in Chicago, Illinois			

Family of
DIANNE



Dianne NEWBERRY
B: 1956



Shonecia Renee GUTHRIE
B: 1973



**Lekeviya
Montrease
NEWBERRY
COTTON**
B: 1989



**Laquis
NEWBERRY**
B: 1990



**Roniqua
Lynnette
WILLIAMS**
B: 1992



Randy Lenoir OLIVER
B: 1981



**Randy
CARPENTER**
B: 2003



**Markeis
CARPENTER**
B: 2004



**Markeith
CARPENTER**
B: 2004

Family of
DAVID



David WOODARD
B: 1970



Angela WOODARD
B: 1971



Davon WOODARD
B: 1996

Family of **BRIAN**



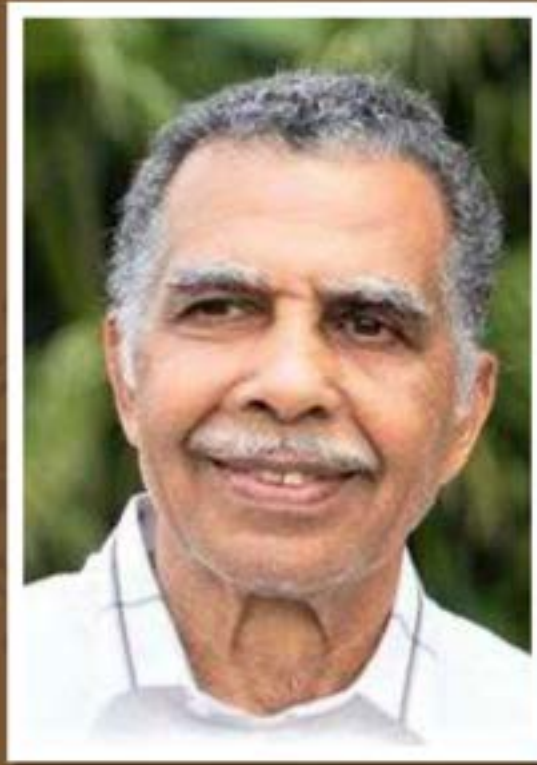
Brian WOODARD
B: 1971



Brianna WOODARD
B: 2002



Alijah WOODARD
B: 2009



THE ALPHONZO WOODARD FAMILY

Established

1966

ALPHONZO WOODARD - *Individual Timeline*



Alphonzo Woodard was born in 1937 in Mississippi. He is the son of Alphonzo Woodard and Ruth Woodard Mannings.

1937, Birth
Mississippi

1966, Marriage

1920 1925 1930 1935 1940 1945 1950 1955 1960 1965 1970 1975 1980 1985

Russian Revolution

*Wide-spread famine
in U.S.S.R.*

*Dead Sea Scrolls
found*

*Cousteau's *The
Living Sea**

*Star Wars movie
released*

ALPHONZO WOODARD - *Family Group Sheet*

Alphonzo Woodard

Birth: 1937 in Mississippi

Death:

Other Spouses:

Parents: Alphonzo Woodard & Ruth Woodard Mannings



Cecile Woodard



Marriage: 1966

CHILDREN	SEX	BIRTH	SPOUSE	MARRIAGE	DEATH
Brandon Woodard	M	1968 in Chicago, Illinois			
Daneen Woodard Edmond	F	1970 in Chicago, Illinois			

Family of
ALPHONZO



Alphonzo WOODARD
B: 1937

Cecile WOODARD
M: 1966



Brandon WOODARD
B: 1968



**Skylar C.
WOODARD**
B: 1997



**Dancin WOODARD
EDMOND**
B: 1970



Torin EDMOND
M:



**Kenyon
EDMOND**
B: 1999



**Niyah
EDMOND**
B: 2003



THE LILLIAN LAFRANCINE WOODARD BOLDEN FAMILY

Established

LILLIAN LAFRANCINE WOODARD BOLDEN - *Individual Timeline*



Lillian LaFrancine Woodard Bolden was born in 1939 in Mississippi. She is the daughter of Alphonzo Woodard and Ruth Mannings Woodard. She married James Bolden in 1975 in Memphis Tenn.. He was born in 1930 in Memphis Tenn., and died in 1999 in Memphis Tenn..

1939, Birth
Mississippi

1958, Marriage
Memphis Tenn.

1975, Divorce
Memphis Tenn.

1975, Marriage
Memphis Tenn.

1920 1925 1930 1935 1940 1945 1950 1955 1960 1965 1970 1975 1980 1985

Russian Revolution

*Lindbergh's baby
kidnapped*

*Dead Sea Scrolls
found*

*Cousteau's The
Living Sea*

*Star Wars movie
released*

LILLIAN LAFRANCES WOODARD BOLDEN - *Family Group Sheet*

**Lillian LaFrancine Woodard
Bolden**

Birth: 1939 in Mississippi

Death:

Other Spouses: James Bolden

Parents: Alphonzo Woodard & Ruth Mannings Woodard



Joe McCray

Birth: 1934 in Memphis Tenn.

Death: 1999

Other Spouses:

Parents:



Marriage: 1958 in Memphis Tenn.

CHILDREN	SEX	BIRTH	SPOUSE	MARRIAGE	DEATH
Nina Rene McCray Thornton	F	1958 in Great Lakes, Illinois	Matthew Thornton	1984 in Memphis Tenn.	
Delisa Gail McCray	F	1960 in Great Lakes, Illinois			
Joseph Lee McCray	M	1962 in Memphis Tenn.	Glynda Wright McCray	1986 in Memphis Tenn.	
Simeon Lanier McCray	M	1966 in Memphis Tenn.	Brenda Reliford McCray	1993 in Memphis Tenn.	

LILLIAN LAFRANCES WOODARD BOLDEN - *Family Group Sheet*

**Lillian LaFrancine Woodard
Bolden**

Birth: 1939 in Mississippi

Death:

Other Spouses: Joe McCray

Parents: Alphonzo Woodard & Ruth Mannings Woodard



James Bolden

Birth: 1930 in Memphis Tenn.

Death: 1999 in Memphis Tenn.

Other Spouses:

Parents:



Marriage: 1975 in Memphis Tenn.

CHILDREN	SEX	BIRTH	SPOUSE	MARRIAGE	DEATH

Family of **LILLIAN
LAFRANCES**



**Lillian LaFrancine
WOODARD BOLDEN**
B: 1939



James BOLDEN
B: 1930
M: 1975
D: 1999



Joe MCCRAY
B: 1934
M: 1958



**Nina Rene MCCRAY
THORNTON**
B: 1958



Matthew THORNTON
B: 1958
M: 1984



Joseph Lee MCCRAY
B: 1962



Glynda WRIGHT MCCRAY
B: 1965
M: 1986



**Ryan J.
THORNTON**
B: 1990



**Meagan N.
THORNTON**
B: 1994



**Jennifer L.
MCCRAY
GORDON**
B: 1987



**Joseph L.
MCCRAY**
B: 1988



Delisa Gail MCCRAY
B: 1960



Simcon Lanier MCCRAY
B: 1966



**Brenda RELLIFORD
MCCRAY**
B: 1962
M: 1993



**Ashley R.
PENCHION**
B: 1985



THE GERALDINE WOODARD JAMES FAMILY

Established

1970

GERALDINE WOODARD JAMES - *Individual Timeline*



Geraldine Woodard James was born in 1940 in Mississippi. She is the daughter of Alphonzo Woodard and Ruth Woodard Mannings.

1940, Birth
Mississippi

1970, Marriage

1925 1930 1935 1940 1945 1950 1955 1960 1965 1970 1975 1980 1985 1990

Tomb of King Tut discovered

Hindenberg disaster

Queen Elizabeth begins reign

Baryshnikov makes professional debut

Prince Charles and Lady Diana Spencer marry



THE BARBARA JOYCE WOODARD TURNER FAMILY

Established

BARBARA JOYCE WOODARD TURNER - *Individual Timeline*



Barbara Joyce Woodard Turner was born in 1942 in Memphis Tenn.. She is the daughter of Alphonzo Woodard and Ruth Mannings Woodard.

1942, Birth
Memphis Tenn.

1961, Marriage

1974, Marriage

1925 1930 1935 1940 1945 1950 1955 1960 1965 1970 1975 1980 1985 1990

Tomb of King Tut discovered

Glenn Miller forms jazz band

Queen Elizabeth begins reign

Baryshnikov makes professional debut

Prince Charles and Lady Diana Spencer marry

BARBARA JOYCE WOODARD TURNER - *Family Group Sheet*

Barbara Joyce Woodard Turner

Birth: 1942 in Memphis Tenn.
 Death:
 Other Spouses: Alphonso Turner
 Parents: Alphonzo Woodard & Ruth Mannings Woodard



Herbert Stout

Birth: 1939
 Death:
 Other Spouses:
 Parents:



Marriage: 1961

CHILDREN	SEX	BIRTH	SPOUSE	MARRIAGE	DEATH
Tonya La Shae Stout Jacobs	F	1962 in Memphis Tenn.			
Elailni J. Stout Vance	F	1965 in Memphis Tenn.	Randy Vance	1995 in Memphis Tenn.	
Arnetta Michelle Stout Moore	F	1967 in Memphis Tenn.	Phillip Moore	1995	

BARBARA JOYCE WOODARD TURNER - *Family Group Sheet*

Barbara Joyce Woodard Turner

Birth: 1942 in Memphis Tenn.
 Death:
 Other Spouses: Herbert Stout
 Parents: Alphonzo Woodard & Ruth Mannings Woodard



Alphonso Turner

Birth: 1937
 Death: 2018
 Other Spouses:
 Parents:



Marriage: 1974

CHILDREN	SEX	BIRTH	SPOUSE	MARRIAGE	DEATH
Eric Theopholis Turner	M	1981 in LA California			2004

Family of **BARBARA**

JOYCE



Barbara Joyce WOODARD TURNER
B: 1942



Alphonso TURNER
B: 1937
M: 1974
D: 2018



Herbert STOUT
B: 1939
M: 1961



Tonya La Shae STOUT JACOBS
B: 1962



Arnetta Michelle STOUT MOORE
B: 1967



Phillip MOORE
B: 1951
M: 1995



Nickolas HALL
B: 1992



Malaysia BROOME SIMPSON
B: 1996



Kingsley BROOME
B: 1998



Jade MOORE
B: 1992



Philisa MOORE
B: 1997



Elailni J. STOUT VANCE
B: 1965



Randy VANCE Sr.
B: 1964
M: 1995



Eric Theophilis TURNER
B: 1981
D: 2004



Phillip VANCE
B: 1985



Randy VANCE Jr.
B: 1991



Trumaine VANCE
B: 1992

Family of **TONYA**

LACLAIVE



Tonya La Shae **STOUT JACOBS**
B: 1962



Nickolas **HALL**
B: 1992



Malaysia **SIMPSON**
B: 1996

Delawrence **SIMPSON**
B: 1997
M: 2020



Milan **SIMPSON**
B: 2020



Kingsley **BROOME**
B: 1998

Family of ELAILNI



**Elailni J. STOUT
VANCE**

B: 1965

Randy VANCE Sr.

B: 1964

M: 1995



Phillip VANCE

B: 1985



**Linnea Marie
VANCE**

B: 2013



**Khapri Earline
Joyce VANCE**

B: 2018



Randy VANCE Jr.

B: 1991



Mary Lee VANCE

B: 1992

M: 2016



Trumaine VANCE

B: 1992



Family of **ARNETTA**

MICHELLE



**Arnetta Michelle
STOUT MOORE**

B: 1967

Phillip MOORE

B: 1951

M: 1995



Jade MOORE

B: 1992



Philisa MOORE

B: 1997



THE GEORGIA RUTH WOODARD WATSON FAMILY

Established

13 Apr 1968

GEORGIA RUTH WOODARD WATSON - *Individual Timeline*



Georgia Ruth Woodard Watson was born in 1944 in Memphis Tenn.. She is the daughter of Alphonzo Woodard and Ruth Woodard Mannings.

1944, Birth
Memphis Tenn.

13 Apr 1968, Marriage

1925 1930 1935 1940 1945 1950 1955 1960 1965 1970 1975 1980 1985 1990

*Japanese earthquake
destroys half of
Tokyo*

Hindenberg disaster

*Queen Elizabeth
begins reign*

*Baryshnikov makes
professional debut*

Falklands War

GEORGIA RUTH WOODARD WATSON - *Family Group Sheet*

Georgia Ruth Woodard Watson

Birth: 1944 in Memphis Tenn.
 Death:
 Other Spouses:
 Parents: Alphonzo Woodard & Ruth Woodard Mannings



Willie Watson

Birth:
 Death: 16 Nov 2016
 Other Spouses:
 Parents:



Marriage: 13 Apr 1968

CHILDREN	SEX	BIRTH	SPOUSE	MARRIAGE	DEATH
Mario W. Watson	M	1974 in Memphis Tenn.			
Terica Watson Lamb	F	1971 in Memphis Tenn.			
Melissa R. Watson Cox	F	1981			
Melinda G. Watson	F	1981			

RUTH



Georgia Ruth
WOODARD WATSON
B: 1944

Willie B. **WATSON**
B: 14 Feb 1942
M: 13 Apr 1968
D: 16 Nov 2016



Terica **WATSON LAMB**
B: 1971



Cubie **LAMB**
M: Jul 2009



Melissa R. **WATSON COX**
B: 1981



Deitrick **COX**
M:



Quinten **LAMB**
B: 2001



Lathan **LAMB**
B: 2003



Jayden **LAMB**
B: 2003



Brayden **COX**
B: 2013



Cason **COX**
B: 2017



Deacon **COX**
B: 2020



Mario W. **WATSON**
B: 1974



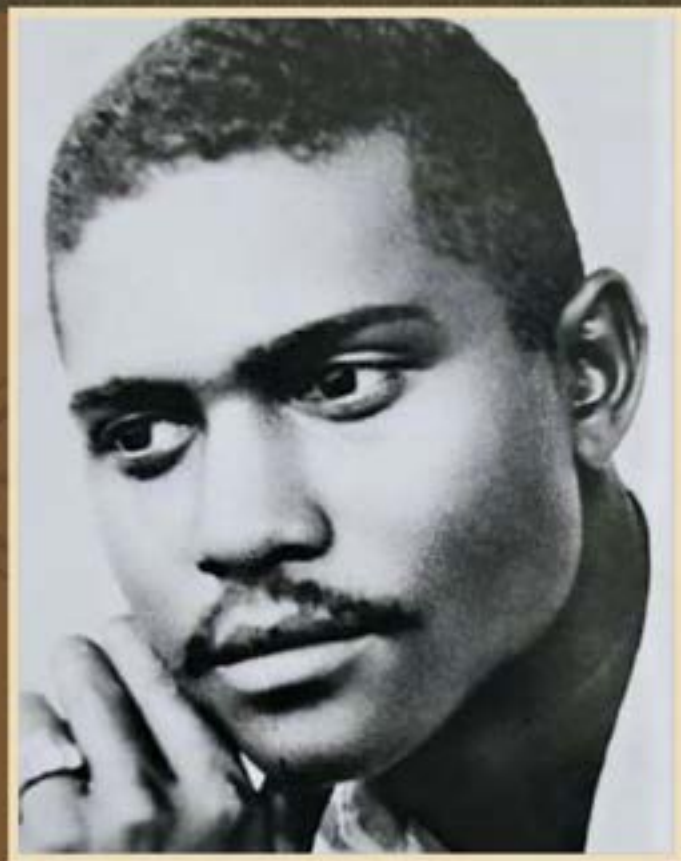
Melinda G. **WATSON**
B: 1981



Marthon
COLBERT
B: 1999



Markeisha
WOODARD
B: 2000



THE LOVETTE EUGENE WOODARD FAMILY

Established

LOVETTE EUGENE WOODARD - *Individual Timeline*



17 Nov 1945, Birth
Memphis Tennessee

Lovette Eugene Woodard was born on 17 Nov 1945 in Memphis Tennessee, and died on 4 DEC 1980 in Los Angeles, California. He is the son of Alphonzo Woodard and Ruth Woodard Mannings.

4 DEC 1980, Death
Los Angeles, California

1930 1935 1940 1945 1950 1955 1960 1965 1970 1975 1980 1985 1990 1995

*Fleming discovers
penicillin*

*Howard Hughes
designs Spruce
Goose*

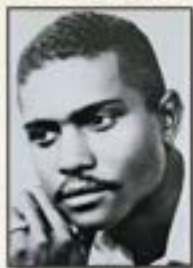
*Soviet Union
launches Sputnik*

*MASH television
show premieres*

*Chernobyl nuclear
accident*

Family of **LOVETTE**

EUGENE



Lovette Eugene
WOODARD
B: 17 Nov 1945
D: 4 DEC 1980



THE SALEEM (ROBERT) A. EL AMIN (WOODARD) FAMILY

Established

SALEEM (ROBERT) A. EL AMIN (WOODARD) - *Individual Timeline*



Saleem (Robert) A. El Amin (Woodard) was born in 1948 in Memphis Tenn.. He is the son of Alphonzo Woodard and Ruth Woodard Mannings.

1948, Birth
Memphis Tenn.

1945 1946 1947 1948 1949 1950 1951 1952 1953 1954 1955 1956 1957 1958

*United Nations
formed*

*Apartheid in South
Africa*

*Soviet Union
launches Sputnik*

Family of **SALEEM (ROBERT)**



Saleem (Robert) A. EL AMIN (WOODARD)
B: 1948



Rashad EL AMIN
B: 1978



Crystal EL AMIN
B: 1982
M: 2013



Kai EL AMIN
B: 2013



Gia EL AMIN
B: 2016



James Ali EL AMIN
B: 2006



THE LARRY DARNELL WOODARD FAMILY

Established

LARRY DARNELL WOODARD - *Individual Timeline*



1950, Birth
Memphis Tenn.

Larry Darnell Woodard was born in 1950 in Memphis Tenn.. He is the son of Alphonzo Woodard and Ruth Woodard Mannings.

1947 1948 1949 1950 1951 1952 1953 1954 1955 1956 1957 1958 1959 1960

*Dead Sea Scrolls
found*

Korean War begins

*Hillary climbs Mt.
Everest*

*Hungarian
Revolution*

*Castro becomes
dictator of Cuba*

Family of LARRY

DARNELL



Larry Darnell
WOODARD
B: 1950



Ryan WOODARD
B: 1975



Riley
WOODARD
B: 2012



Ryder
WOODARD
B: 2018



Jovan WOODARD
B: 1977



Jasmine
LATHON
B: 2004



THE SHARON DIANE WOODARD GREEN FAMILY

Established

30 Jun 1979

SHARON DIANE WOODARD GREEN - *Individual Timeline*



1951, Birth
Memphis, Tenn.

Sharon Diane Woodard Green was born in 1951 in Memphis, Tenn.. She is the daughter of Alphonzo Woodard and Ruth Woodard Mannings.

30 Jun 1979, Marriage

1935 1940 1945 1950 1955 1960 1965 1970 1975 1980 1985 1990 1995 2000

*Wide-spread famine
in U.S.S.R.*

*Apartheid in South
Africa*

*Cousteau's The
Living Sea*

*Star Wars movie
released*

*Apartheid ends in
South Africa*

FAMILY *Branches*



SHARON DIANE GREEN WOODARD - *Family Group Sheet*

Sharon Diane Woodard Green

Birth: 1951 in Memphis, Tenn.

Death:

Other Spouses:

Parents: Alphonzo Woodard & Ruth Woodard Mannings



Gregory Green Sr.

Birth: 1949



Marriage: 30 Jun 1979

CHILDREN	SEX	BIRTH	SPOUSE	MARRIAGE	DEATH
Tracy L. Woodard Ulmer	F	1968 in Memphis Tenn.			
Gregory Green Jr.	M	1981 in Bellflower, California			
Kimberly Rose Green Adams	F	1983 in Anaheim, California	Demek Adams	2015	

Family of **SHARON**

DIANE



Sharon Diane
WOODARD GREEN
B: 1951

Gregory **GREEN**
B: 1949



Tracy L. **WOODARD**
ULMER
B: 1968

Bryant **ULMER Sr.**
B: 1973
M: 2004



Gianni **ULMER**
B: 1999



Bryant (B.J.)
ULMER Jr.
B: 2000



Kimberly Rose **GREEN**
ADAMS
B: 1983

Demek **ADAMS**
B: 1981
M: 2013



Kerrington Rose
ADAMS
B: 2016



Deuce Mason
ADAMS
B: 2018



Dillon Maxwell
ADAMS
B: 2018



Gregory **GREEN**
B: 1981





THE CALVIN RICARDO WOODARD FAMILY

Established

CALVIN RICARDO WOODARD - *Individual Timeline*



1952, Birth
Memphis Tenn.

Calvin Ricardo Woodard was born in 1952 in Memphis Tenn.. He is the son of Alphonzo Woodard and Ruth Woodard Mannings.

1949 1950 1951 1952 1953 1954 1955 1956 1957 1958 1959 1960 1961 1962

NATO established

*Queen Elizabeth
begins reign*

*McDonald's
founded*

Peace Corps founded

Family of **CALVIN RICARDO**



Calvin Ricardo
WOODARD
B: 1952

TABLE *Of* CONTENTS



THE RANDOLPH E. MANNINGS FAMILY

Established

8 APR 1934

- 218 THE RANDOLPH EMANUEL MANNINGS
FAMILY *Hazel, Randolph, Lois Louise and Delores*
- 223 THE ARTIE RUE MANNINGS FAMILY
Claude Erwin Jefferson
- 227 THE HAZEL MANNINGS FAMILY
*Debra, Charles David, Marshall Andre, Kenneth Arlan, Derrick Anthony and
Carlton Everett*
- 237 THE RANDOLPH MANNINGS FAMILY
- 241 THE LOIS LOUISE MANNINGS FAMILY
Marion Lafayette, Lanair and Donald E.
- 245 THE DELORES MANNINGS FAMILY

RANDOLPH EMANUEL MANNINGS - *Individual Timeline*



Randolph Emanuel Mannings was born in 1915 in Mississippi, and died in MAY 1989 in Chicago, Illinois. He is the son of Marion Lafayette Mannings and Georgia Carter. He married Arlene St. Maria Banks on 8 APR 1934 in Mississippi. She was born on 11 MAY 1918 in Olive Branch, Miss., and died on 12 SEP 2018 in Chicago, IL..

1915, Birth
Mississippi

8 APR 1934, Marriage
Mississippi

MAY 1989, Death
Chicago, Illinois

1880 1890 1900 1910 1920 1930 1940 1950 1960 1970 1980 1990 2000 2010

First Kentucky Derby

Gandhi starts passive resistance

Wide-spread famine in U.S.S.R.

Cousteau's The Living Sea

The "Chunnel" is completed

RANDOLPH EMANUEL MANNINGS - *Family Group Sheet*

Randolph Emanuel Mannings

Birth: 1915 in Mississippi
 Death: MAY 1989 in Chicago, Illinois
 Other Spouses:
 Parents: Marion Lafayette Mannings & Georgia Carter



Arlene St. Maria Banks

Birth: 1918 in Olive Branch, Miss.
 Death: 12 SEP 2018 in Chicago, IL.
 Other Spouses:
 Parents:



Marriage: 8 APR 1934 in Mississippi

CHILDREN	SEX	BIRTH	SPOUSE	MARRIAGE	DEATH
Artie Rue Mannings	F	1934 in Mississippi	Claude Erwin Henry	1957 in Memphis, Tennessee	27 FEB 2017 in Memphis, Tennessee
Hazel Mannings	F	1936 in Mississippi	Charles David Gordon		
Randolph Mannings	M	1938 in Mississippi	Lillie Mae Hill	Chicago, IL.	
Lois Louise Mannings	F	1940 in Mississippi	Donald E. Clinkscates	Chicago, IL.	
Delores Mannings	F	1940			

Descendants of:
RANDOLPH EMANUEL and ARLENE ST. MARIA BANKS



Randolph Emanuel MANNINGS
B: 1915 Mississippi
D: MAY 1989 Chicago, Illinois



Arlene St. Maria BANKS
B: 1918 Olive Branch, Miss.
M: 8 APR 1934 Mississippi
D: 12 SEP 2018 Chicago, IL

CHILDREN



Arrie Rae
MANNINGS
B: 1934
D: 27 FEB 2007



Hazel
MANNINGS
B: 1936



Randolph
MANNINGS
B: 1938



Lois Louise
MANNINGS
B: 1940



Delores
MANNINGS
B: 1940

Family of **RANDOLPH EMANUEL**



Randolph Emanuel MANNINGS
 B: 1915
 D: MAY 1989
Arlene St. Maria BANKS
 B: 1918
 M: 8 APR 1934
 D: 12 SEP 2018



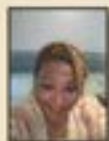
Artie Rue MANNINGS
 B: 1934
 D: 27 FEB 2017
Claude Erwin HENRY
 B:
 M: 1957
 D: 2005



Claude Erwin Jefferson HENRY
 B: 1957
 D: 2004



Hazel MANNINGS
 B: 1936
Charles David GORDON
 B: 1934



Debra GORDON
 B: 1954



Charles David GORDON
 B: 1955



Marshall Andre GORDON
 B: 1956



Kenneth Arlan GORDON
 B: 1958
 D: 1994



Derrick Anthony GORDON
 B: 1960



Carlton Everett GORDON
 B: 1964



Randolph MANNINGS
 B: 1938
Lillie Mae HILL
 M:



Lois Louise MANNINGS
 B: 1940
Donald E. CLINKSCALES
 M:



Marion Lafayette CLINKSCALES



Lanair CLINKSCALES



Donald E. CLINKSCALES



Delores MANNINGS
 B: 1940



Alma MANNING



Anwar MANNINGS



Eddie MANNING



Randal MANNING



THE ARTIE RUE MANNINGS FAMILY

Established

1957

ARTIE RUE MANNINGS - *Individual Timeline*



Artie Rue Mannings was born on 1934 in Mississippi, and died on 27 FEB 2017 in Memphis, Tennessee. She is the daughter of Randolph Emanuel Mannings and Arlene St. Maria Banks. She married Claude Erwin Henry in 1957 in Memphis, Tennessee. He was born in 1911 in Mississippi, and died in 2005 in Memphis, Tennessee.

1934, Birth
Mississippi

1957, Marriage
Memphis, Tennessee

27 FEB 2017, Death
Memphis, Tennessee

1875 1890 1905 1920 1935 1950 1965 1980 1995 2010 2025 2040 2055 2070

*Franco-Prussian
War*

Titanic sinks

*Hungarian
Revolution*

*SARS first detected
in China*

ARTIE RUE MANNINGS - *Family Group Sheet*

Artie Rue Mannings

Birth: 1934 in Mississippi
 Death: 27 FEB 2017 in Memphis, Tennessee
 Other Spouses:
 Parents: Randolph Emanuel Mannings & Arlene St. Maria Banks



Claude Erwin Henry

Birth: 1911 in Mississippi
 Death: 2005 in Memphis, Tennessee
 Other Spouses:
 Parents:



Marriage: 1957 in Memphis, Tennessee

CHILDREN	SEX	BIRTH	SPOUSE	MARRIAGE	DEATH
Claude Erwin Jefferson Henry	M	1957 in Memphis, Tennessee			2004 in Memphis, Tennessee

Family of **ARTIE RUE**



Artie Rue MANNINGS

B: 1934

D: 27 FEB 2017

Claude Erwin HENRY

B: 1911

M: 1957

D: 2005



Claude Erwin Jefferson

HENRY

B: 1957

D: 2004



THE HAZEL MANNINGS FAMILY

Established

HAZEL MANNINGS - *Individual Timeline*



Hazel Mannings was born on 1936 in Mississippi. She is the daughter of Randolph Emanuel Mannings and Arlene St. Maria Banks.

1936, Birth
Mississippi

1933 1934 1935 1936 1937 1938 1939 1940 1941 1942 1943 1944 1945 1946

*Widespread famine
in U.S.S.R.*

*King Edward VIII
abdicates*

*Steinbeck's *The
Grapes of Wrath**

*Howard Hughes
designs *Spruce
Goose**

*United Nations
formed*

HAZEL MANNINGS - *Family Group Sheet*

Hazel Mannings

Birth: 1936 in Mississippi

Death:

Other Spouses:

Parents: Randolph Emanuel Mannings & Arlene St. Maria Banks



Charles David Gordon

Birth: 1934

Death:

Other Spouses:

Parents:



Marriage:

CHILDREN	SEX	BIRTH	SPOUSE	MARRIAGE	DEATH
Debra Gordon	F	1954 in Memphis, Tennessee	Darryl D. Rogers		
Charles David Gordon	M	1955 in Chicago, IL	Diane	Chicago, IL	
Marshall Andre Gordon	M	1956 in Chicago, IL			
Kenneth Arlan Gordon	M	1958 in Chicago, IL	Venoris	Chicago, IL	1994 in Chicago, IL
Derrick Anthony Gordon	M	1960 in Chicago, IL	Darlene		
Carlton Everett Gordon	M	1964 in Chicago, IL	Diana	Chicago, IL	

Descendants of:
HAZEL and CHARLES DAVID GORDON



Hazel MANNINGS
B: 8 MAY 1936 Mississippi



Charles David GORDON
B: 1934

CHILDREN



Debra
GORDON
B: 1954



Charles David
GORDON
B: 1955



Marshall Andre
GORDON
B: 1956



Kenneth Arlan
GORDON
B: 1958
D: 1994



Derrick
Anthony
GORDON
B: 1960



Carlos Everett
GORDON
B: 1964

Family of **DEBRA**



Debra GORDON
B: 1954



Darryl D. ROGERS
B: 1950



Danita ROGERS
B: 1971



Damian DRIVER
B: 1971
D: 2008



David JOHNSON
B: 1973



Darryl ROGERS
B: 1978



Staci
B: 1979
M:



David JOHNSON
B: 2005



D'shace DRIVER
B: 1990



Dmitri ROGERS
B: 2000



Isiah ROGERS
B: 2007



Devona ROGERS
B: 1975



Jermaine BOLDEN
B: 1974



D'zhari BOLDEN
B: 1995



Deonna BOLDEN
B: 1996

Family of **CHARLES DAVID**



**Charles David
GORDON**
B: 1955

Diane
B: 1955
M:



Tecoya GORDON
B: 1986

Daniel HARRIS
B: 1988
M:



Brandy GORDON
B: 1990

Alex THERVIL
B: 1987
M:



Charles GORDON
B: 1991

Family of **MARSHALL ANDRE**



Marshall Andre
GORDON
B: 1956



Ahmon Enoch **HARDIN**
B: 1979
D: 2018



Andre Hasan **GORDON**
B: 1993



Family of **KENNETH ARLAN**



**Kenneth Arlan
GORDON**
B: 1958
D: 1994
Venoris
M:



Kenneth GORDON
B: 1987

Family of **DERRICK ANTHONY**



**Derrick Anthony
GORDON**
B: 1960



Darlene
B: 1958
D: 2007



Jasmine Ardena GORDON
B: 1989



Zaria GATES
B: 2008



Zion JONES
B: 2012



Zander JONES
B: 2016

Family of **CARLTON EVERETT**



**Carlton Everett
GORDON**
B: 1964



Diana
B: 1964
M:



Carlton GORDON
B: 1986



Erinn
B: 1986
M:



**Carlton
GORDON**
B: 2010



**Ethan
GORDON**
B: 2006



Drake GORDON
B: 1991



Raquel
B: 1991
M:



**Nai'Zayah's
WIRES**
B: 2010



Amia GORDON
B: 2011



**Drake
GORDON**
B: 2018



THE RANDOLPH MANNINGS FAMILY

Established

RANDOLPH MANNINGS - *Individual Timeline*



Randolph Mannings was born in 1938 in Mississippi. He is the son of Randolph Emanuel Mannings and Arlene St. Maria Banks.

1938, Birth
Mississippi

1935 1936 1937 1938 1939 1940 1941 1942 1943 1944 1945 1946 1947 1948

*Persia renamed
Iran*

*Glenn Miller forms
jazz band*

U.S. enters WWII

*Allied invasion of
France (D-Day)*

*Dead Sea Scrolls
found*

RANDOLPH MANNINGS - *Family Group Sheet*

Randolph Mannings

Birth: 1938 in Mississippi

Death:

Other Spouses:

Parents: Randolph Emanuel Mannings & Arlene St. Maria Banks



Lillie Mae Hill



Marriage: Chicago, IL.

CHILDREN	SEX	BIRTH	SPOUSE	MARRIAGE	DEATH

Family of **RANDOLPH**



Randolph MANNINGS
B: 1938

Lillie Mae HILL
M:



THE LOIS LOUISE MANNINGS FAMILY

Established

LOIS LOUISE MANNINGS - *Individual Timeline*



Lois Louise Mannings was born on 15 Jun 1940 in Mississippi. She is the daughter of Randolph Emanuel Mannings and Arlene St. Maria Banks.

1940, Birth
Mississippi

1937 1938 1939 1940 1941 1942 1943 1944 1945 1946 1947 1948 1949 1950

Hindenberg disaster

NATO established

LOIS LOUISE MANNINGS - *Family Group Sheet*

Lois Louise Mannings

Birth: 1940 in Mississippi

Death:

Other Spouses:

Parents: Randolph Emanuel Mannings & Arlene St. Maria Banks



Donald E. Clinkscales

Birth: Mississippi

Death:

Other Spouses:

Parents:



Marriage: Chicago, IL.

CHILDREN	SEX	BIRTH	SPOUSE	MARRIAGE	DEATH
Marion Lafayette Clinkscales	M	Chicago, IL.			
Lanair Clinkscales	F	Chicago, IL.			
Donald E. Clinkscales	M	Chicago, IL.			

Family of **LOIS LOUISE**



Lois Louise
MANNINGS
B: 1940

Donald E.
CLINKSCALES
M:



Marion Lafayette
CLINKSCALES



Lanair CLINKSCALES



Donald E. CLINKSCALES



THE DELORES MANNINGS FAMILY

Established

DELORES MANNINGS - *Individual Timeline*



Delores Mannings was born on 1940. She is the daughter of Randolph Emanuel Mannings and Arlene St. Maria Banks.

1940, Birth

1937 1938 1939 1940 1941 1942 1943 1944 1945 1946 1947 1948 1949 1950

Hindenberg disaster

NATO established

Family of **DELORES**



Delores MANNINGS
B: 1940



Alma MANNING



Anwar MANNINGS



Eddie MANNING



Randal MANNING



ancestry.mycanvas.com