

# A STATE OF THE ART BIOMAT®

## AMETHYST BIOMAT® 7000MX

THE BIOMAT® IS A PRODUCT OF MODERN TECHNOLOGY WITH PROVEN EFFICACY

CRAFTED BY HIGHLY SKILLED SCIENTISTS AND ENGINEERS



A BREAKTHROUGH  
IN MEDICAL  
SCIENCE



### EVERYONE CAN BENEFIT FROM THE BIOMAT®!

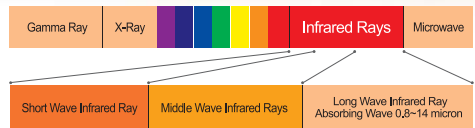
Every day, our bodies and our minds are subjected to stress. This results in aches and pains, irritability and fatigue. Since 1997, the Biomat has helped thousands of those suffering from minor muscle and joint pain all the way to arthritis.

#### ▶ ARTHRITIS

Millions of people suffer from the debilitating effects of Arthritis. The pain is caused by inflammation in the joints which leads to a loss of movement. Arthritis can affect any joint in the body and is best treated with the Biomat. Thousands have all found relief!



### FAR INFRARED & CIRCULATION



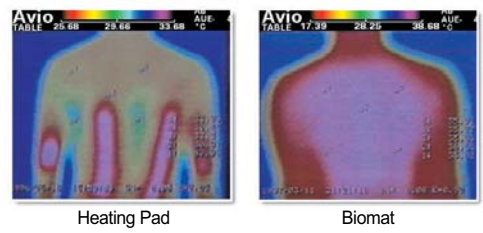
Far infrared rays are part of the electromagnetic spectrum that has been studied for various health benefits. It provides warmth and relaxation similar to the energy that radiates from the sun. These rays not only benefit muscles on the surface of the body, but all cells and bodily tissues in the deepest parts of the body. The warm stimulating waves temporarily increase local circulation. This deep tissue heating relaxes the muscles and tissues surrounding the joints relieving pain and discomfort.

### NEGATIVE IONS

Negative ions, or anions, are atoms that have a greater number of electrons (-) than protons (+), which result in a negative charge. They are abundant in natural environments such as forests, mountains, waterfalls and oceans. Negative ions are believed to relieve stress and boost our energy.

### INCREASE OF BODY TEMPERATURE

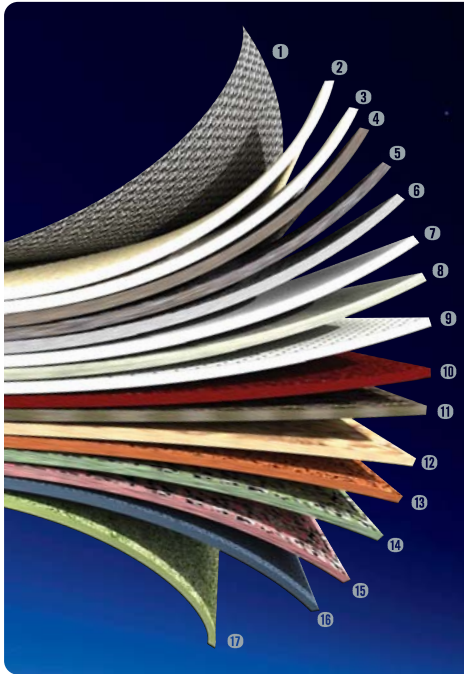
Studies have indicated that during thermotherapy, or hyperthermia, the body is exposed to higher temperatures which causes a significant increase in skin microcirculation, skin temperature and core temperature.



### RECOMMENDED FOR:

Athletes, the elderly, the disabled, carpenters, office workers, construction workers, or anyone that has a physically demanding job. The Biomat is a registered FDA medical device making it suitable for use in hospitals and therapeutic clinics. It is easy to use and safe to operate. Get pain relief at home and whenever you need it by owning a Biomat!

# Unique Innovation in Bio Technology



## THE BIOMAT<sup>®</sup>'S 17 LAYERS CONSIST OF:

- 1 Surface material: Silicon urethane with cotton
- 2 Waterproof layer
- 3 Amethyst layer for transferring natural infrared rays
- 4 Hyron cotton layer for thermal insulation
- 5 TOCA layer for natural negative ions
- 6 Nano Copper fabric layer
- 7 Peach and Grape Seed fiber layer for heat preservation
- 8 Carbon fiber layer for electromagnetic interception
- 9 Copper fabric layer for electromagnetic interception
- 10 Fiberglass layer
- 11 Thermal preservation layer
- 12 Silicon and Teflon reverse currency heating layer with EMF interception
- 13 Nonwoven fabric layer
- 14 Aluminum layer for reflection of infrared rays
- 15 Nonwoven fabric layer for heat preservation
- 16 Thermal protection layer
- 17 Bottom material: High quality cotton with brass pattern



### HOW DOES IT WORK?

Unlike an electric blanket which uses electric coils to create heat, the Biomate uses a combination of fabrics and Amethyst stones to generate far infrared rays which is then transferred to the body as heat. The heat comes from friction generated within the body through the effects of far infrared rays. Far infrared rays warm the inside of your body and the part of your body making contact with the Biomate. Should the temperature of any part of the Biomate exceed the set temperature, the thermal sensors distributed throughout the Biomate will cut off the electric current. When the Biomate reaches the selected temperature, the negative ion lights will come on and will stay on until the Biomate needs to raise the temperature. The Biomate comes with an external control box which allows you to adjust the desired temperature and usage time (between 2, 4, 8, or 12 hours). As an added safety feature, when the controller is set to 131°F or higher, it will automatically step down to 113°F after 4 hours.



### SPECIFICATIONS

- 1 Far Infrared Rays - The combination of natural Amethyst and Hyron cotton layer generates far infrared rays (6-12 Microns) that the human body can easily absorb.
- 2 Negative Ions - Natural Tourmaline and the TOCA<sup>™</sup> (Tourmaline) layer generates negative ions.
- 3 EMF - Special layers of fabric in conjunction with the Biomate EMF Interceptor effectively reduces electromagnetic waves.

► All Biomate products have been tested by TÜV SÜD for Electromagnetic Fields and were found to be in compliance with IEC 62233 (ed.1) and EN 62233:2008.

### BENEFITS

- Temporary relief of:
  - Minor muscle pain
  - Minor joint pain and stiffness
  - Joint pain associated with arthritis
  - Muscle spasms / Minor sprains
  - Minor strains / Minor muscular back pain
- Relaxation of muscles
- Temporary increase of local circulation

## RICHWAY BIOMAT<sup>®</sup> LICENSES/CERTIFICATIONS

U.S. FDA U.S. Food and Drug Administration (FDA)

**CVC** CHINA ELECTRICAL SAFETY

**CE** INTERNATIONAL ELECTRICAL SAFETY  
Approval (CE 2013-0142)

**KMD** KOREA MFDS  
Korea Medical Device

**KEC** KOREAN ELECTRICAL SAFETY  
Korean Electrical Safety Number  
PRO: HH071485-13002A  
MINI: HH071485-13001A

**JFDA** JAPAN FDA  
Ministry of Health, Labour and Welfare  
approved medical devices (BG10300403)

**PS E** JAPAN ELECTRICAL SAFETY  
Permitted by the Japanese Electrical Safety Authority (HW 2013-0145)

**GMP** Good Manufacturing Practice (GMP)  
approved manufacturer (No. 3965)

**ERC** RUSSIA ELECTRICAL SAFETY

ISO 9001:2008 Certification (KQC-4506)

ISO 14001:2004 Certification (KEC-1167)

ISO 13485:2012 Certification (M-0318/14)

**TUV** TÜV EMC / EMF SAFETY

**BEIJING** BEIJING ELECTRICAL SAFETY LABORATORY

Chinese Manufacture Certification  
HOUSA1-20141771 (GB4706.1-2005)

P.L.I. (F-2016-0219060)

### CONTACT NUMBER

**WARNING:** Use carefully. May cause serious burns. Do not use over sensitive skin areas or in the presence of poor circulation. The unattended use of the Biomate by children or incapacitated persons may be dangerous.

Specific medical advice should be obtained from a licensed health care practitioner.