

October, 2015

Volume 31, #9

Portfolio Visual Arts News



Pleasanton Art League

Livermore Art Association



PAL & LAA General Meeting October 12, 2015

Cultural Arts Building, 4455 Black Ave., Pleasanton

Program by Mel Prest: **Be a Professional Artist**



Have you prepared your Artist Bio and CV? Are you satisfied with your work? The writing development could be daunting for even the most successful artist.

At our October 12th General Meeting, **Mel Prest**, a San Francisco based artist, educator, and curator will be our presenter to cover this important topic. Her presentation will be interactive, covering these professional basics for artists, but she will also discuss:

- Define an Artist Bio and a CV
- Hone an existing CV, statement or Bio
- Discuss Methods to develop a solid body of work
- Provide strategies for exhibiting concurrent series of works

You are encouraged to bring a copy of your bio or artist statement to edit and develop in the meeting. This will make the exercise truly interactive, and it will give you the feedback you need to develop these important documents. If time permits, the discussion will also include developing one's online artist presence using a website, blog and social media.

Handouts will be available, but please bring a notebook or paper as well. Come join us for this important discussion with someone who has extensive experience as an artist, a curator and an educator.

Index

Awards	5
Bulletin Board	5
Calendar	8
Classes & Workshops	5
Contact Us	7
LAA News	3
LAA Gallery News.....	3
Membership	7
Officers & Chairpersons	7
PAL News	2
Photo Album	6
Shows to See.....	4

Insert

PAL Multi Media Show Entry Form.	6
----------------------------------	---

Mel Prest is an artist, curator and educator living and working in San Francisco and New York. She attended Rhode Island School of Design (BFA in Painting, 1991), MFA from Mills College 1999. Mel teaches painting, drawing and professional development classes around the Bay Area. She is an advisory board member of Root Division, a non-profit arts organization in San Francisco. She is a non-objective painter whose work is focused on perception and color relationships and has shown locally and internationally and has been awarded funded artist residencies nationwide.

Mel is an independent curator and has organized shows on both coasts and in Europe. She is also a founding member of Transmitter, a collaborative curatorial initiative gallery in Brooklyn, NY and is an advisory board member at Root Division in San Francisco. Mel teaches art and professional development courses at several institutions in San Francisco. Her own paintings, focused on color and perception, has been shown internationally--most recently at Chandra Cerrito Contemporary in Oakland. www.melprest.com

Pleasanton Art League News

PAL President's Message:

"At the same time though, all of the talent in the world won't get you anywhere if you aren't willing to work hard, push yourself, and try new approaches." <https://claralieu.wordpress.com/>

The debate about talent verses hard work will always be with us. Over and over again I meet people who appreciate art but feel that they are not true artists. They say they don't have the talent. They are interested in looking at art, but they don't seem to have the confidence to make art. Much has been written on this topic, and from what I've read, our ability to make art boils down to our commitment to work at it. After all, it is "artwork".

A friend recently told me that she likes to start planning ahead for her art projects next year. She won't wait until January to make her decisions; she wants a running start into January. She likes to plan now, in October, and not have to contend with what she'll do next year, next year. That's all part of the commitment: to be willing to work hard, to push yourself, and to try new approaches.

The same goes for our organization. We are now in the stages of planning for next year. We will be voting on our new slate of Officers at our November General Meeting. We have all of the Board Offices filled except for the important one - President. I plan to stay on the Board as Parliamentarian and volunteer as needed. Another important Committee Chair we need filled is our General Meeting Chair. This person (with the help of others) recruits artists for our General Meetings and assures the artists they'll not only get directions to the meeting place but also that they will receive a check!

If you would like to serve but feel you don't have the talent, please feel free to come to a Board meeting or two to meet Board and Committee Members. See how helpful and fun and dedicated we really are behind the scenes. Our next Board Meeting will be in early November. (I am fortunate to have a Board who is flexible to my ever-changing schedule. We all try to help each other out.) You are most welcome to attend.

If you have checked a box that you would like to volunteer but no one has contacted you yet, or you want to "help out" but not be a part of a committee, by all means call me at 925 846-8149 or email me at lbriigs202@gmail.com. We will find a place for you!

Lisa Rigge, PAL President

PAL Circuit Sales: Two Art Circuit members sold paintings at the Circuit site at Sallman, Yang, and Alameda. Linda Jeffery Sailors sold "Wake Up" and "Imagination Test" and Lynda Briggs sold one titled "Transient". Beth Okurowsk also sold a painting called "Small Gathering" on the PAL Circuit at the Bagel Street Cafe in Dublin. This is indeed great news for these talented artists. Please join me in congratulating them on their good fortune.

John Trimmingham, Circuit Chair

Report on PAL's Fall Members' Exhibit at the Firehouse: I want to thank all the volunteers who helped in making PAL's Fall show another success. As chairperson I am always delighted when so many artists arrive to help. Many hands really do make a light load. As one of the people from the City said, "PAL works on their art shows like a well-oiled machine." We are excellent artists too! Every time I talk to a judge when they are through judging, I hear statements such as "What exceptional artists are presented," or "The quality of work is outstanding," and, "I'm impressed with the excellent work, it makes for a diverse show." You should be proud. And I cannot thank you all enough for making my job so easy by being there to help.

Pat Smith, Chairperson

PAL Photography Show: This is just a reminder that PAL is sponsoring a photography show during the month of November at the Livermore Community Center located on East Ave. If you want to participate, please send in your application as soon as possible. (An application was at the bottom of page 6 in the September Portfolio or get one on www.PAL-ART.com.) We will be limited on the number of people that can participate so it is important to apply as soon as possible.

PAL All Medium Show: The same is true for the All Media (that can be hung) Show that we will be doing in December. (See application on page 6.) The Community Center is a busy place during these two months and sales are possible. If you have any questions about these shows, call Linda Jeffery Sailors at 925 449-7274 or email her at Madammayor@comcast.net.

New PAL Members: Jeoffrey Anderson and Robin Bowes are now PAL members.



Splatter: 11 PAL volunteers spent most of the day on September 19, in the heat, showing and demonstrating art at Dublin's Splatter Festival. Photo shows of Beth Okurowski painting.

Livermore Art Association News

LAA President's Message:

Walter's Message:

The Annual Joint Meeting/Pot Luck Dinner was held at Charles R. Winery in Livermore. The event featured delicious food supplied by the attendees and a wonderful selection of fine wines by our hostess Bonnie Bartlett and Charles R Winery.

The Nomination Committee chaired by Kathleen Hill reported a partial slate of three nominees for the positions of Vice President, Caryne Mount; Secretary, Carol Eicher; and Treasurer, Stephen Rodriguez. A nominee for the position of President is yet to be named.

Jennie McGregor and Anne Giancola spoke to the gathering about AVA - Alliance for the Visual Arts. This is a Valley wide alliance devoted to the growth and exposition of the Visual Arts. Jennie can be reached at 4jennie@comcast.net.

The LAA Gallery is finishing rotation of new works into its display area. New events and activities are in the planning stages. A major exhibit in the newly reconfigured Bankhead is being assembled.

There is lots going on; lots of People Power needed! Watch for news announcements in the coming Portfolios.

Walter, LAA President

LAA New Member: Don Meeker.

LAA Gallery News

Autumn Spectrum, a Celebration of the Colors of Fall: NEW WORKS by LAA Gallery Artists inspired by Nature's Autumn color palette. Drop by Wednesday-Sunday, 11:30 am to 4:00 pm at the Carnegie Building, 3rd Street between J & K Streets.

Sharon Mosher Tangney, LAA Gallery Guest Artist shows her Tuscan Sun Series. Artist's Comments. "The Tuscan sun in autumn sets ablaze the rich hues of the Cortona passageways and hillsides. My photos, taken in October of 2013, suggest the reluctance of summer to depart as the sun slipped ever lower in the sky. What a gorgeous, spiritual place on earth to be spend an autumn!" See Sharon's photographs through the end of October.



LAA Gallery New Member: Carol Faber-Peake: The LAA Gallery welcomes Carol, a new member. Painting, sculpting, mask making, writing, collage artworks, and storytelling arts are her creative mediums. As life continues to evolve, her intention through the creative art process is to empower people to use art not only as a healing tool but to discover their inner consciousness. Each new experience is connecting her to her ever growing community and a desire to reach out and share this process with others. After obtaining her Associate in Arts at Los Positas College in Livermore, she attended CSU East Bay Hayward and graduated Cum Laude with a Bachelors of Fine Arts. Carol designed and facilitated a pilot four hour workshop at John F. Kennedy University in Berkeley, California on honoring transitions and reminiscent work in November, 2011. In 2012 she received her certification in Faces of Your Soul Mask Making through Kaleo Ching and Elise Ching at John F. Kennedy University. June 2013 she received her Masters of Transformative Arts from John F. Kennedy University.

Caryne Mount and Jennie McGregor, Featured Artists at the LAA Gallery through the end of October. Drop by to see Jennie's new photography and Caryne's latest fiber art.

Shows to See

Clancy Crew will exhibit on the Nancy Thompson Memorial PAL Wall, upstairs at the Firehouse Art Center, Pleasanton, until October 13. 4444 Railroad Ave., Pleasanton.

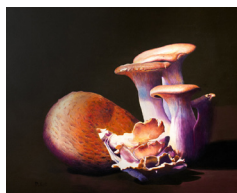
Pat Smith will show her watercolors (right) on the PAL Wall at the Firehouse from October 13 until November 10.



Diane and Stephen Rodriguez, Trains Trains Trains: Paintings and photographs of trains will be shown at Wente Winery tasting room, 5565 Tesla Rd., Livermore from October 1 to 28. A reception, open to the public, will be held Sunday, October 4 from 1:00 to 3:00 pm. (Diane's painting on top, Stephen's photograph below.)



Lisa Rigge and Maryann Kot: Experience Lisa's fall color photographs and Maryann's archival reproductions of original art in the friendly atmosphere of the new coffee shop, Espresso Rosetta, 206 S. J Street in downtown Livermore through December 31. (Lisa's photograph right. Maryann's colored pencil, below right.)



Charlotte Severin's works on yupo paper are on display in the hallways at the Firehouse Art Center, 4444 Railroad Avenue, Pleasanton until October 14.

Marge Barta Atkins, until October 31, Moraga Art Gallery, 522 Center Street, Moraga. Information: mtatkins@sbcglobal.net.

Gary Winters shows his handmade nail and wood art made from square nails recovered from the old Kolln Hardware. Upstairs in the alcove at the Firehouse until October 17.

PAL Members Show at the Harrington Gallery, Firehouse Art Center, September 24 through October 24. Firehouse hours are Wednesday through Friday, noon to 5:00 pm and Saturday, 11:00 am through 3:00 pm. The Firehouse is located at 4444 Railroad Ave., Pleasanton. <http://www.firehousearts.org/>. (Artists' pick up date is Tuesday, October 27, 11:00 am to noon.) Show Chair: Pat Smith 925 846-4138 or email psmithrltr@comcast.net.

ArtWalk Livermore returns to beautiful downtown Livermore on Saturday, October 10 from 11:00 am to 5:00 pm. Join the thousands of art lovers who will explore over 150 local and regional artists in parks, studios and businesses. Live music and more! Check out the steamroller printing happening at the Downtown Art Studios, and explore Bothwell's Tree Sweater Project and the Humane Society, whose animals will benefit after the tree sweaters become comfort blankets for shelter pets. The Disabled Vet's Painting project returns as well. See www.artwalklivermore.com for details. ArtWalk is a fundraiser for the Bothwell Arts Center.

Two PAL Shows at the Livermore Community Center, East Avenue during November and December. See page 6.

Celebrating our Abilities, Arts & Crafts from Present & Past Times has been rescheduled to October 3 from 11:00 am to 4:00 pm. Please join these talented seniors as they share their creations at Kottinger Place, 240 Kottinger Drive and Pleasanton Gardens at 251 Kottinger Drive, Pleasanton. For more information contact Cecelia Florini at Kottinger Place 925 846-0133 or Kottinger@barcelon.com.

Fremont Art Association 50th Annual Art Show, continues until October 17 at the gallery, 37697 Niles Blvd., Fremont. www.Tinyurl.com/faannualshow. 510 792-0905.

The Tuesday Painters Exhibit: Members of the Fremont Art Association who paint together each Tuesday are showing their work at Mission Coffee, 151 Washington Blvd, Fremont during October. There will be an Artists' Reception on Sunday, October 11, 3:00 to 5:00 pm.

Classes & Workshops

Peggy Frank, has openings in the 2015-2016 Young Artists' Studio school year art classes. She offers small group instruction in art to students ages 7 through high school and also is offering an adult class. Projects include all kinds of drawing, painting, printmaking and sculpture. High school students working on advanced portfolios are welcome. Peggy has been an art instructor in the Livermore Valley since 1980. Contact her at 925 443-8755 or email frank.a@comcast.net.

Charlotte Severin: Art Made Easy 1:00 to 4:00 pm, beginning Thursday, October 8 for 6 weeks at the Firehouse Art Center, Pleasanton. Register at City of Pleasanton 925 931-5340.

Sherri Kelcourse will be teaching an oil painting class in Castro Valley beginning October 2. The class is truly a great deal as the school will provide the material. The cost of the class is \$150 but the materials included are worth roughly \$125. The class will be held at 3 Crosses Church Academy of Arts. Details on website, see link: <http://www.musicandarts.3crosses.org/teen-adultclasses/> or contact Sherri at kelcourse@comcast.net.

Carolyn Lord Firehouse Art Center classes: Tuesday morning, November: Composition; Thursday morning and evening, December-January: Painting skills, a continuation of Perspective; Saturday mornings, January 2016: Plein Air Painting in Pleasanton. For more information call 925 447-5134, www.carolynlord.com, or www.pleasantonfun.com. 2016 Watercolor Workshops with Carolyn at Scottsdale Artists' School in Arizona, March; View Arts Center in the Adirondacks, August; Carmel Visual Arts, October.

Bothwell Classes and Workshops are ongoing at the Bothwell Arts Center. Want to teach a class, pass along your skills? Classroom available for \$10 per hour. Contact agiancola@livermoreperformingarts.org for further info.

Bulletin Board

Artist Play Night Returns! Sponsored by Independent Art Supplier Way Up Art & Frame, with space provided by the Bothwell Arts Center, 2466 8th St., Livermore, this is a chance to experiment with new materials and explore mediums you've never tried. Tuesday, October 20th, 6:00-8:30. No charge. Come play with us!

For Sale: Free-standing, spinning carousel for displaying 4 X 6 cards; 6' tall, 15" in diameter with 60 pockets. \$45. Also a 10 X 10 Sierra II easy-up canopy, never been out of its container so should be considered new; it is listed on Amazon for \$100. Price is \$75. Call Izzy or Larry Gipson at 209 832-7648. Reasonable offers considered.

The Bankhead Theater Lobby is now open to the public on Tuesdays through Sundays, 12:00 to 6:00 pm. You are welcome to come in and see the art on display.

Lynne Shephard has a new web site. Check Google for Lynne Shephard Art.

Looking Ahead: Monday November 9, LAA/PAL Guest Artist will be Debbie Wardrope who plans to do a Livermore street scene in pastel. Meeting will be at 7:30 pm at the Bothwell Art Center, 8th Street, Livermore.

Awards

PAL Members' Show at the Firehouse

Theme Award (Patterns): Lynne Shephard, Birds Eye View

Merit: Eugenia Zobel, Raisin Pourpre; Mark Shawver, Galoshes; David Casterson, Afternoon Graze; Charlotte Severin, Surf Patterns; Justin Trent, Family Gathering.

Honorable Mentions: John Trimmingham, Urban Traffic; Sandra Berkson, Twists and Turns; Bettie Goosman, Misty Morning; Chuck McGregor, Solstice Moon; Patricia Devitt, Interwoven. Maryann Kot, California Meyers; Gene Gracey, At the Ranch; Diane Rodriguez, Old Blue; Ellen Baily, Kaleidoscope; Linda Garbarino, Woman and her Dog; Annette Mack, Ocean Life; Ron Rigge, After the Fire; Kathleen Hill, Jingle Bells; Lisa Rigge, New Zealand Sheep; John West, Patio Geranium.

PAL Scholarship Awards:

Jeffrey Anderson and Kate Taylor, Las Positas students, have been awarded PAL Scholarships to continue their art education. Their work can be seen at the PAL Members Show, currently at the Firehouse Arts Center. See page 2 and 4.

Photo Album



LAA/PAL Potluck & Social was held on September 14. Thanks to Charles R Winery for hosting the event.



PAL Entry Form

Mixed Media Show (2D only) -- December 1-30, 2015
Livermore Community Center 2015, East Ave., Livermore

PAL is having an Art Show that includes all media at the Livermore Community Center during the month of December. This will be a very busy time for this location. The cost to enter two pieces is \$5 for PAL members and \$8 for non members. Space is limited, so applications will be accepted on a first come first served basis. Each artist is allowed to show 2 pieces.

Deadline: November 20. Send with fee (made to PAL) to Linda Jeffery Sailors, 841 Chaucer Way, Livermore, CA 94551
Delivery: December 1 at 5:00 pm. Pick up: December 30 at 5:00 pm.

Fill out and Return with Your Entry Fee:

Title #1 _____ Medium _____ Price Including Tax _____
 Title #2 _____ Medium _____ Price Including Tax _____
 Artist _____ Phone _____ Email _____

Attach to Back of Artwork:

Artist _____ Title #1 _____ Price Including Tax _____
 Artist _____ Title #2 _____ Price Including Tax _____

Portfolio Staff

Editor

Norma Webb 925 828-9170
normawebb@comcast.net

Mailing Committee

Gail Ruvalcaba
925 846-8960
Annette Mack
925 833-8437
Carol Hart
925 833-0445
Maclyn Pons
925 455-0419

E-Mailing Service

Dennis Baker 925 485-0932
dennis@theBakerHouse.net

Submission Guidelines

Deadline: the 10th of the Month
E-mail Text to
normawebb@comcast.net
(Attachments for Graphics)
or
Mail Printed Text to
Norma Webb, 67 Hazelnut Ct.
San Ramon, CA 94583
or
Phone Norma at
925 828-9170

Membership

January 1 to December 31

CHAIR FOR LAA:

Diane Rodriguez 925 462-1919
Livermore Art Association
Regular \$25 Married Couple \$30
Family \$35 H.S. Student \$15
Senior (65+) \$15
LAA Website Gallery Members
Add \$10 Annual Fee

CHAIR FOR PAL:

Diane Rodriguez 925 462-1919
Pleasanton Art League
Regular \$25 Married Couple \$30
Family \$35 Student Full Time \$15
Senior (65+) \$15
PAL Website Gallery Members
Add \$10 Annual Fee

Officers & Chairpersons

LAA

President

Walter Davies 925 447-9159
wdaviesster@gmail.com

Vice President

Maryann Kot 520 429-6300
mck6361@gmail.com

Secretary

Carol Eicher 925 443-8354
carol_a_eicher@yahoo.com

Treasurer

Stephen Rodriguez 925 462-1919
srod@earthlink.net

Historian

Position Open

Hospitality

Karen Fleschler 925 487-3702
karenkb@yahoo.com

LAA Gallery Director

Diana Carey 925 518-3486
dianacarey44@gmail.com

LAA Gallery

925 449-9927
LCAC Representative
Diana Carey 925 518-3486
dianacarey44@gmail.com

Liaison of Shows

Bill Hackett 925 449-1604
cheshirkat@mac.com

Membership

Diane Rodriguez 925 462-1919
diane.rodriguez@earthlink.net

Portfolio Staff - See Page Left

Programs

Position Open

Property Manager

Walter Davies 925 447-9159
wdaviesster@gmail.com

Publicity

Position Open

LAA Website

Alyssa Bozekowski
bozekowski.alysa@gmail.com

PAL

President

Lisa Rigge 925 846-8149
lbrig@sbcglobal.net

Parliamentarian

Linda Sailors 925 449-7274
madammayor@comcast.net

Vice President

John West
westjohn@yahoo.com

Secretary

Judy Rice 925 443-4555
jandjrjce@comcast.net

Treasurer

Bill Zobel 925 443-7266
grampz@juno.com

Circuit

John Trimmingham 510 877-8154
sfbayjt@rocketmail.com

Hospitality

Dorothy Maestas 925 846-6726
dorothymaestas@comcast.net

Membership

Diane Rodriguez 925 462-1919
diane.rodriguez@earthlink.net

PAL Firehouse Wall

Linda Briggs 925 600-9258
lbriggs400@gmail.com

PCAC

Rekha Joshi 925 485-3791
rekhao@yahoo.com

Portfolio Staff - See Page Left

Publicity

Position Open

Programs

Rahul Prasad 510 735-5010
rrprasad@mac.com

Scholarships

Gina Kaiper 925 463-0468

Website

Christine McCall 925 606-1088
cwhiteharp@yahoo.com

Workshops

Linda & George Garbarino
925 462-8779
lindagarbarino@comcast.net

Yahoo Group

Pat Smith 925 846-4138
psmithrltr@comcast.net

Contact Us

Livermore Art Association, P. O. Box 216, Livermore, CA 94551-0216
www.LivermoreArtAssociation.org LAA Gallery 925 449-9927

Livermore Art Association Gallery, 2155-3rd St., Livermore 94550

Pleasanton Art League, P. O. Box 23, Pleasanton, CA 94566-0023
www.PAL-ART.com

Livermore Art Association
P. O. Box 216
Livermore, CA 94551-0216

Portfolio

Pleasanton Art League & Livermore Art Association
October, 2015

Be a Professional Artist
Program October 12,
See Page 1

Inside: Your October 2015 Portfolio

October

4	Diane and Stephen Rodriguez, Wente, 1:00 to 3:00 pm	4
10	Artwalk, Livermore, 11:00 to 5:00 pm	4
12	PAL/LAA General , Meeting, 7:30 pm.....	1
20	Artists' Play Night, 6:00 to 8:30	5
24	Last Day of PAL Show at the Firehouse	4
27	PAL Firehouse Return of Artwork, 11:00 to noon.....	4

November

9	LAA/PAL General Meeting, 7:30 pm. Debbie Wardrope, Guest	5
---	--	---